

St. Joseph Mercy Brighton Expansion and Renovation

7575 Grand River Ave., Brighton, Michigan 48114
7555 Grand River Ave., Brighton, Michigan 48114



Trinity Health-Michigan/ Saint Joseph Mercy Health System

1600 South Canton Center Road
Canton, MI 48155
<https://www.stjoeshealth.org/>

Client Contact:
Stephen VanBrussel
Saint Joseph Mercy Health System
Regional Director of Construction
36475 Five Mile Road
Livonia, MI 48154
stephen.vanbrussel@stjoeshealth.org

SMITHGROUP

500 GRISWOLD
SUITE 1700
DETROIT, MI 48226
313.983.3600
smithgroup.com



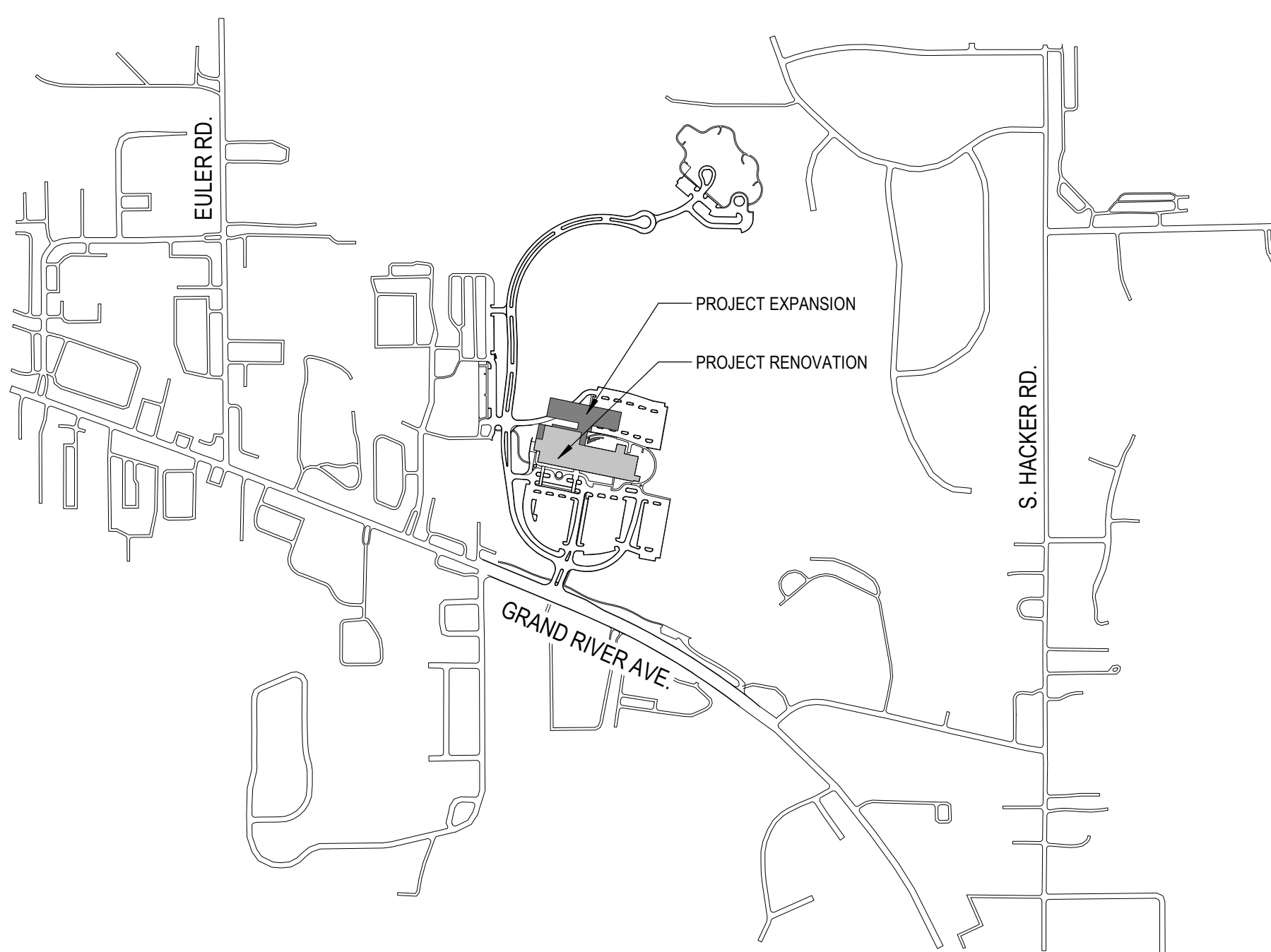
4833 WATER STONE LN PH: 513.480.4216
MAINEVILLE, OH www.imegcorp.com
45039

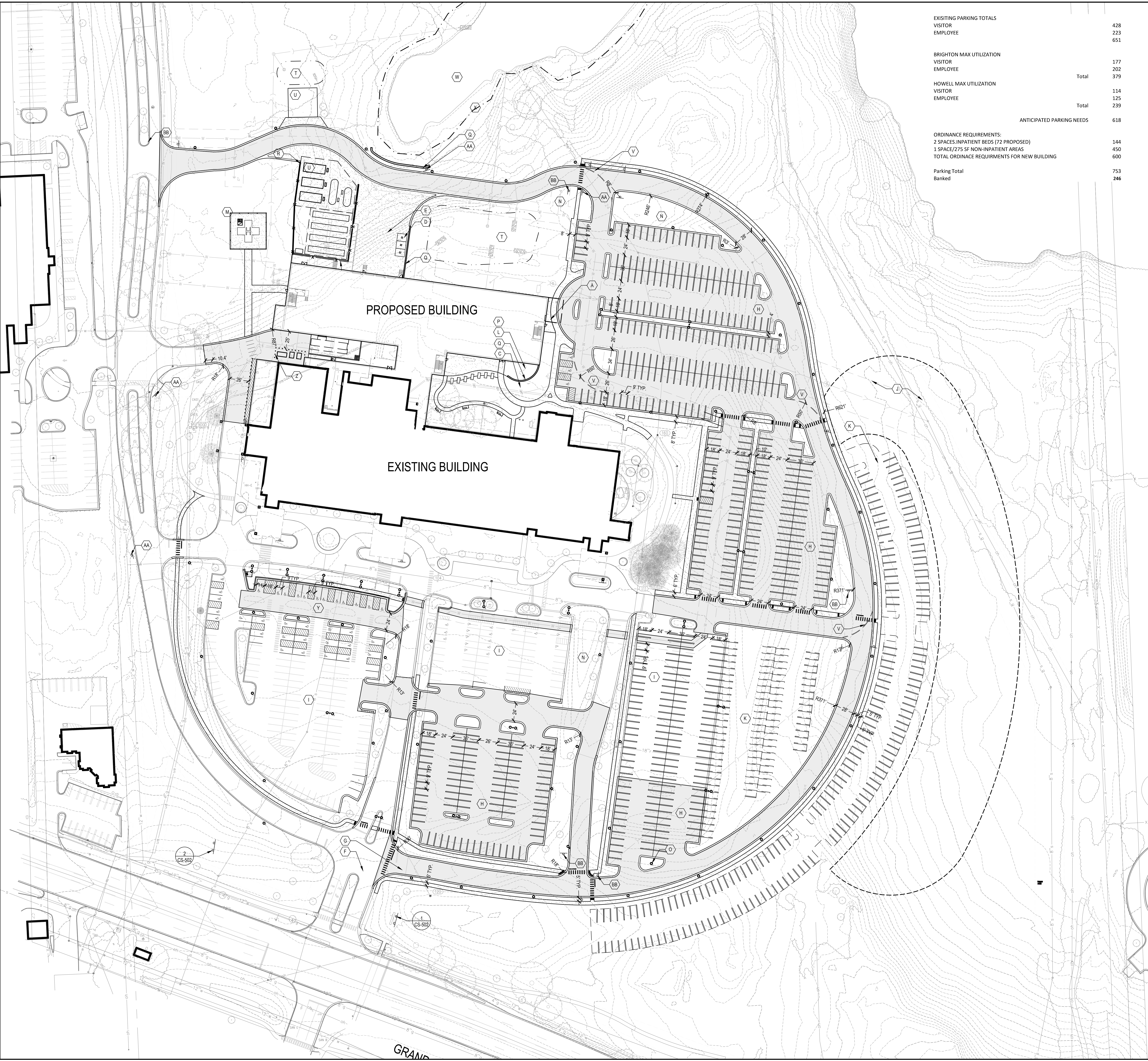
VOLUME I OF I

ISSUED FOR:
SITE PLAN RESUBMITTAL

ISSUE DATE:
MAY 4, 2022

SG PROJECT #:
13472.000





EXISTING PARKING TOTALS	
VISITOR	428
EMPLOYEE	223
	651
BRIGHTON MAX UTILIZATION	
VISITOR	177
EMPLOYEE	202
	379
HOWELL MAX UTILIZATION	
VISITOR	114
EMPLOYEE	125
	239
	Total
	618
ORDINANCE REQUIREMENTS:	
2 SPACES/IMPASSIBLE BEDS (72 PROPOSED)	144
1 SPACE/775 SF NON-IMPASSIBLE AREAS	450
TOTAL ORDINANCE REQUIREMENTS FOR NEW BUILDING	600
Parking Total	753
Banked	246

SHEET NOTES

- ENGINEER WILL PROVIDE TO THE CONTRACTOR AUTOCAD 2022 DWG FILES FOR LAYOUT AND GRADING USE. IF THERE ARE DISCREPANCIES BETWEEN THIS SET OF PLANS AND THE ELECTRONIC FILES, THE PLAN DRAWINGS SHALL CONTROL. NOTIFY ENGINEER IMMEDIATELY OF ANY DISCREPANCIES.
- NOTIFY THE ENGINEER IN WRITING OF ANY IDENTIFIED DISCREPANCIES WITHIN THE CONSTRUCTION DOCUMENTS PRIOR TO THE START OF WORK. DURING PERFORMANCE OF THE WORK, VERIFY ALL DIMENSIONS AND CONDITIONS AT THE JOB SITE AND CROSS-CHECK DETAILS AND DIMENSION SHOWN ON THE DRAWINGS WITH RELATED REQUIREMENTS ON THE ENGINEERURAL, MECHANICAL, ELECTRICAL AND PLUMBING DRAWINGS. CONTRACTOR SHALL VERIFY ALL SITE CONDITIONS PRIOR TO STARTING WORK. IN ALL CASES WHERE A CONFLICT MAY OCCUR, THE ENGINEER SHALL BE NOTIFIED AND WILL INTERPRET THE INTENT OF THE CONTRACT DOCUMENTS.
- PRIOR TO THE COMMENCEMENT OF WORK, VERIFY LOCATIONS AND DEPTHS OF ALL UNDERGROUND UTILITIES THAT MAY BE AFFECTED BY CONSTRUCTION AND TAKE RESPONSIBILITY FOR DAMAGES TO SUCH UTILITIES CAUSED AS A RESULT OF CONSTRUCTION.
- CALL MISS DIG 811 A MINIMUM OF 48 HOURS TO BEGINNING ANY EXCAVATION ACTIVITIES.
- LIMITS OF SEED ARE APPROXIMATE BASED ON GRADING PLAN. CONTRACTOR TO SEED ALL DISTURBED AREAS FROM CONSTRUCTION RELATED ACTIVITIES. IF CONTRACTOR DISTURBS AREA OUTSIDE LIMITS OF DISTURBANCE, CONTRACTOR TO REPLACE MATERIAL AT NO COST OF OWNER.
- REFER TO THE SPECIFICATIONS FOR ADDITIONAL REQUIREMENTS NOT SHOWN ON DRAWINGS.
- DETAILS NOTED AS TYPICAL SHALL APPLY IN ALL CASES UNLESS SPECIFICALLY SHOWN OR NOTED OTHERWISE. WHERE NO SPECIFIC DETAIL IS SHOWN, THE CONSTRUCTION SHALL BE IDENTICAL OR SIMILAR TO THAT INDICATED FOR LIKE CASES OF CONSTRUCTION ON THIS PROJECT.
- PROTECT EXISTING LANDSCAPING. CONTRACTOR RESPONSIBLE IF DAMAGE OCCURS DURING PROJECT DURATION. CONTRACTOR IS RESPONSIBLE FOR MAINTENANCE OF TREE PROTECTION FENCE DURING PROJECT DURATION.
- SIGNS AND PAVEMENT MARKINGS TO BE INSTALLED PER MUTCD STANDARDS.
- COORDINATE CONSTRUCTION OF PENETRATIONS, SLEEVES, VARIATIONS IN THE SLAB ELEVATIONS, DEPRESSED AREAS AND ALL OTHER ARCHITECTURAL, MECHANICAL, ELECTRICAL AND PLUMBING REQUIREMENTS.

KEY NOTES

- (A) PATIENT DISCHARGE AND STAFF ENTRY
- (B) PEDESTRIAN CROSSING SIGN
- (C) LANDSCAPE, SEE LANDSCAPE PLANS
- (D) REFUSE AREA
- (E) LOADING DOCK
- (F) MAIN ENTRANCE
- (G) FIRE SAFETY LOOP
- (H) PROPOSED PARKING
- (I) EXISTING PARKING
- (J) FUTURE COMMUNITY FARM AREA
- (K) BANKED PARKING
- (L) COURTYARD
- (M) HELISTOP REF. CONSULTANT PLANS
- (N) LAWN AREA, SEE LANDSCAPE PLANS
- (O) LIGHTING, SEE LIGHTING PLANS
- (P) BUILDING SEE ARCHITECTURE PLANS
- (Q) RETAINING WALL
- (R) FENCE
- (S) SEAT WALL
- (T) DETENTION POND SEE LANDSCAPE PLANS
- (U) UTILITY YARD
- (V) 50' RADIUS FOR FIRE TRUCK TURNING
- (W) WETLAND
- (X) WETLAND BOUNDARY (MAPPED AND SURVEYED)
- (Y) BARRIER FREE PARKING
- (Z) BOLLARDS
- (AA) WAYFINDING SIGN
- (BB) STOP SIGN

LEGEND

ASPHALT PAVEMENT	2,3	CS-500
HEAVY DUTY CONCRETE PAVEMENT	1	CS-500
CONCRETE PAVEMENT	4	CS-500
COLOR CONCRETE PAVEMENT	4	CS-500
CURB AND GUTTER	7,8	CS-500
CURB RAMP	13	CS-500
CONTROL JOINT	5	CS-500
ISOLATION (EXPANSION) JOINT	6	CS-500
SOLID PAVEMENT MARKING		
STOP BAR PAVEMENT MARKING		
CROSSWALK PAVEMENT MARKING	9	CS-500
HANDICAP PAVEMENT MARKING	11	CS-500
BOLLARD		
TRASH RECEPTACLE		
RECYCLING CONTAINERS		
DUMPSTER		
FENCE	14	CS-500
DETECTABLE WARNING STRIP		
RETAINING WALL 1		
SITE WALL 1		
LIGHT POLE	12	CS-501
SIGNAGE		
MONUMENT SIGNAGE		

Trinity Health

ST. JOSEPH MERCY BRIGHTON EXPANSION AND RENOVATION

7575 GRAND RIVER AVE., BRIGHTON, MI 48114
7555 GRAND RIVER AVE., BRIGHTON, MI 48114

SMITHGROUP

201 DEPOT STREET
SECOND FLOOR
ANN ARBOR, MI 48104
734.662.4457
www.smithgroup.com

IMEG

4833 WATER STONE LN PH: 513.480.4216
WARRENVILLE, OH www.imegcorp.com
45039

ISSUED FOR: _____ REV: _____ DATE: _____

SITE PLAN RESUBMITTAL A 04MAY22
SITE PLAN REVIEW A 30MAR22
SCHEMATIC DESIGN A 04MAR22
SD PROGRES A 22DEC21

SEALS AND SIGNATURES

NOT FOR CONSTRUCTION

KEY PLAN

PROJECT NORTH

DRAWING TITLE
OVERALL SITE PLAN

SCALE
SCALE: 1" = 50'

9 20' 40' 80'

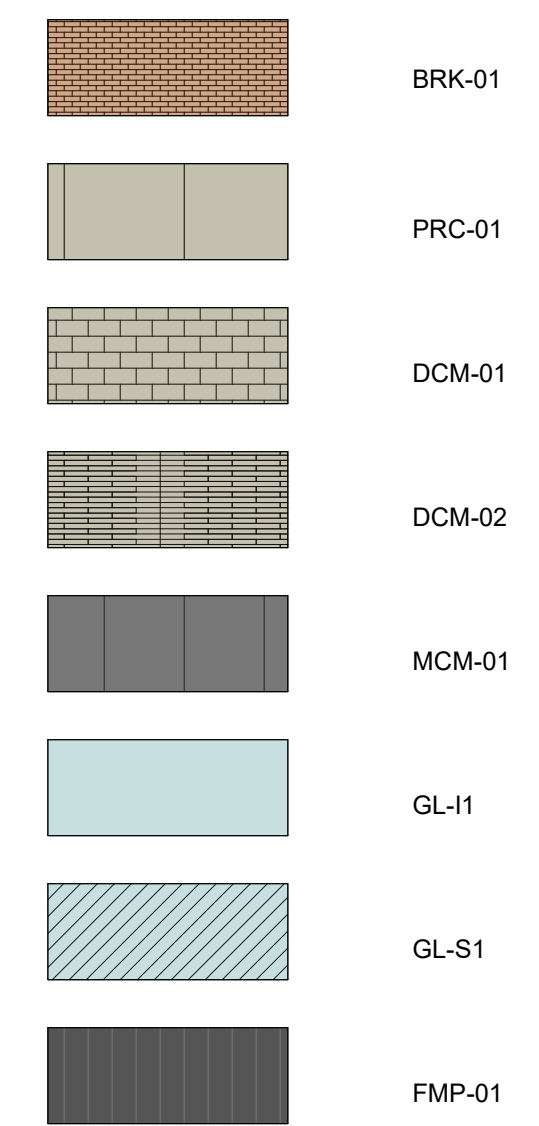
SCALE 13472.00

PROJECT NUMBER
CS-100

DRAWING NUMBER

FILE: C:\Users\jvelasco\Documents\Projects\SmithGroup\CS-100\CS-100.dwg - 13472 - SmithGroup - SmithGroup - SmithGroup - SmithGroup - SmithGroup - SmithGroup - SmithGroup - SmithGroup - SmithGroup - SmithGroup
 USER: jvelasco DATE: Mon, 03/20/22 TIME: 06:53 AM
 PLOT: 03/20/22 06:53 AM

GRAPHIC LEGEND



GENERAL SHEET NOTES

- A. REFER TO THE A0.X SERIES SHEETS FOR ARCHITECTURAL GENERAL NOTES, DRAWING, REFERENCE AND MATERIAL SYMBOLS, ABBREVIATIONS AS WELL AS DIMENSIONING CONVENTIONS USED ON THIS SHEET.
B. REFER TO AND COORDINATE WITH STRUCTURAL, MECHANICAL, PLUMBING, AND ELECTRICAL FOR ADDITIONAL INFORMATION NOT SHOWN ON THIS SHEET.
C. REFER TO AND COORDINATE WITH CIVIL DRAWINGS FOR ALL FINISH GRADES.
D. REFER TO THE A4.X SERIES SHEETS FOR ENLARGED EXTERIOR ELEVATIONS.
E. REFER TO THE A5.X SERIES SHEETS FOR EXTERIOR WINDOW AND LOUVER FRAME ELEVATIONS.

REFERENCE KEYNOTES

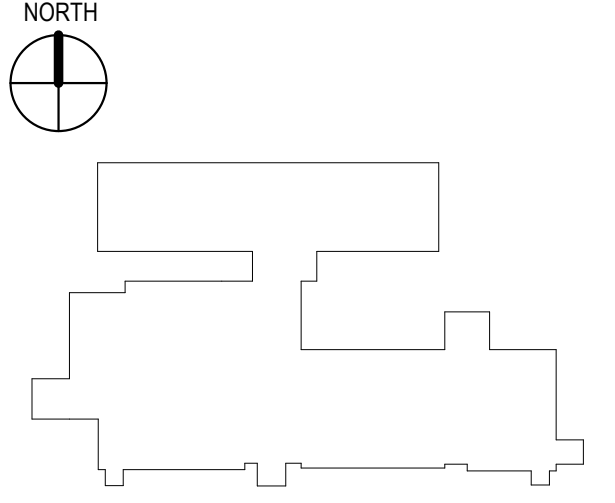
Table with columns: ISSUED FOR, REV, DATE. Includes entries for SITE PLAN RESUBMITTAL, SITE PLAN REVIEW, SCHEMATIC DESIGN, SD PROGRESS.

SEALS AND SIGNATURES

NOT FOR CONSTRUCTION

SHEET KEYNOTES

KEYPLAN



SHEET TITLE EXTERIOR BUILDING ELEVATIONS

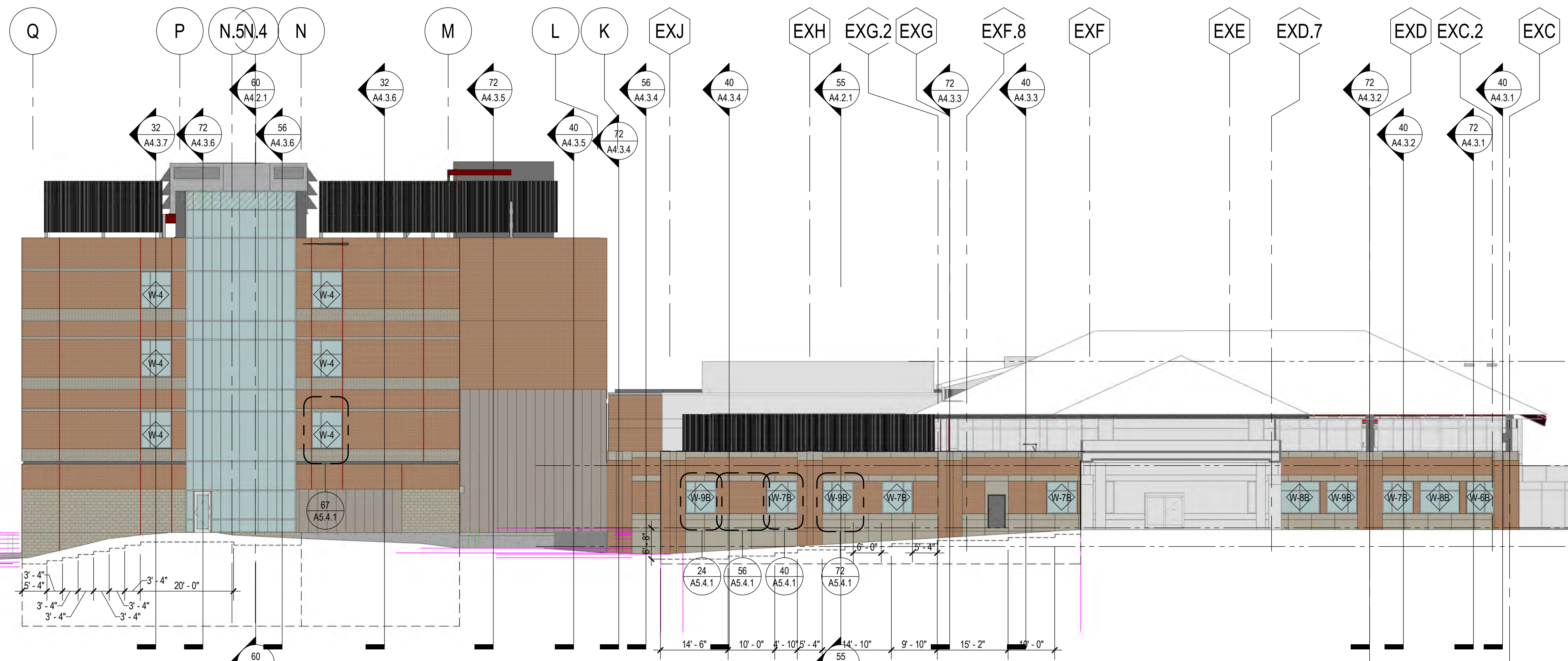
SG PROJECT #: 13472.000

PROJECT NUMBER

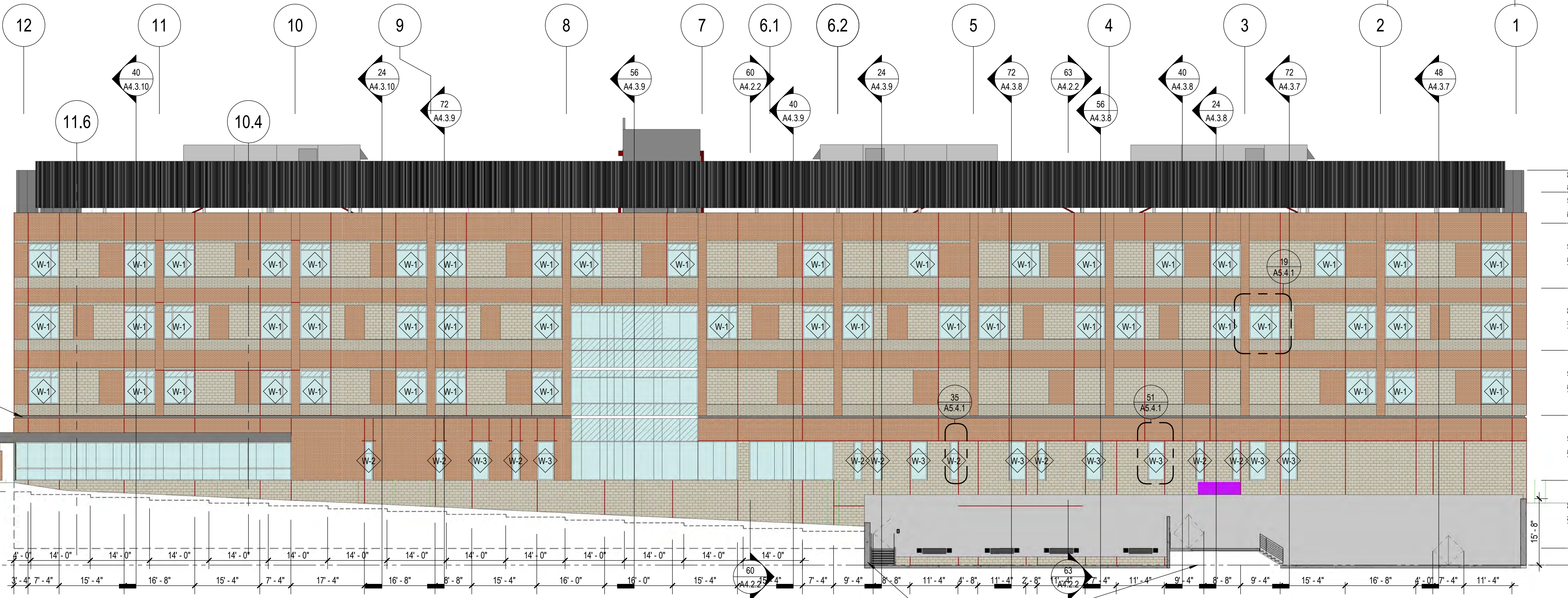
A4.1.1

SHEET NUMBER

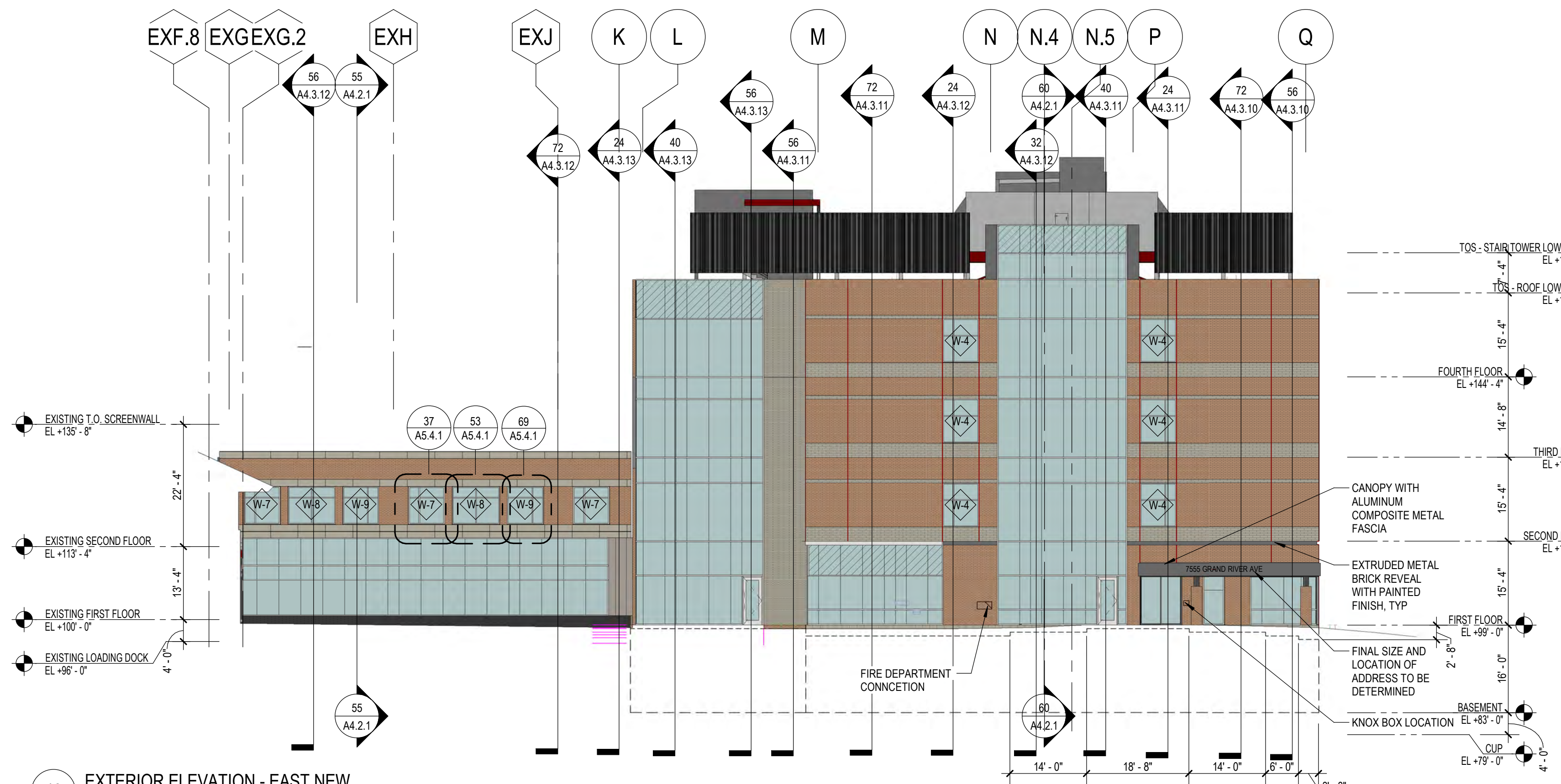
Plot Date: 5/3/2022 11:03:12 PM



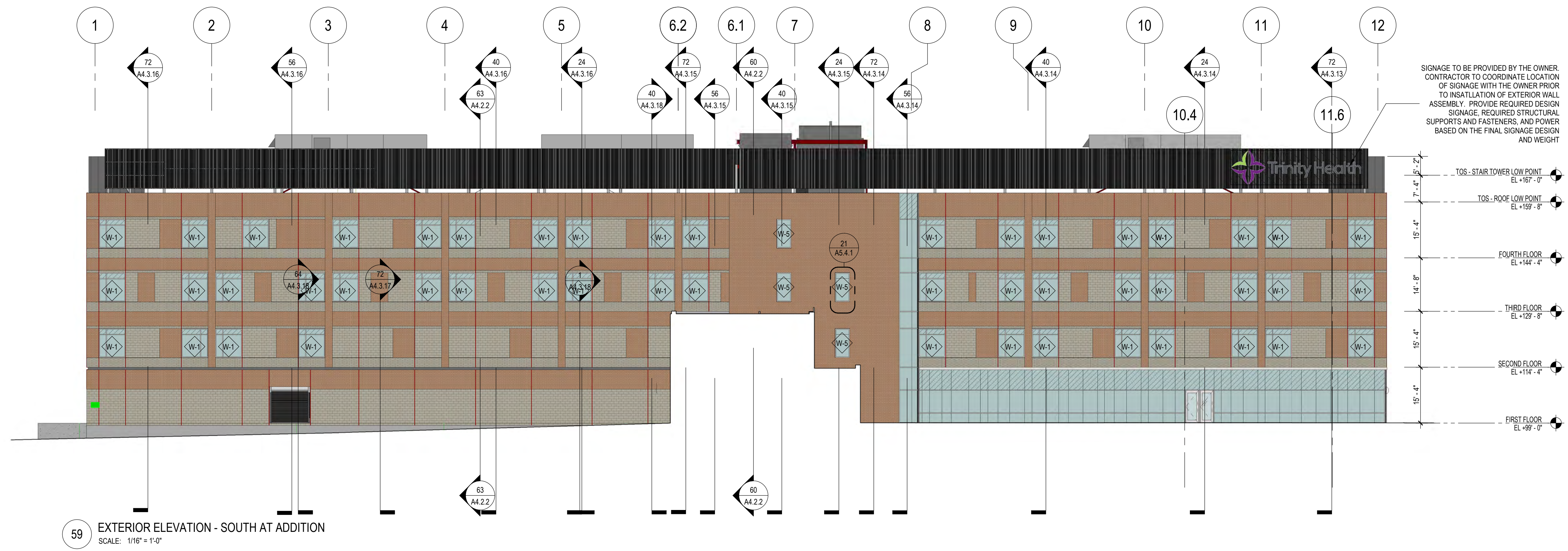
67 EXTERIOR ELEVATION - WEST EXISTING AND NEW SCALE: 1/16" = 1'-0"



62 EXTERIOR ELEVATION - NORTH NEW SCALE: 1/16" = 1'-0"



48 EXTERIOR ELEVATION - EAST NEW SCALE: 1/16" = 1'-0"



59 EXTERIOR ELEVATION - SOUTH AT ADDITION
SCALE: 1/16" = 1'-0"

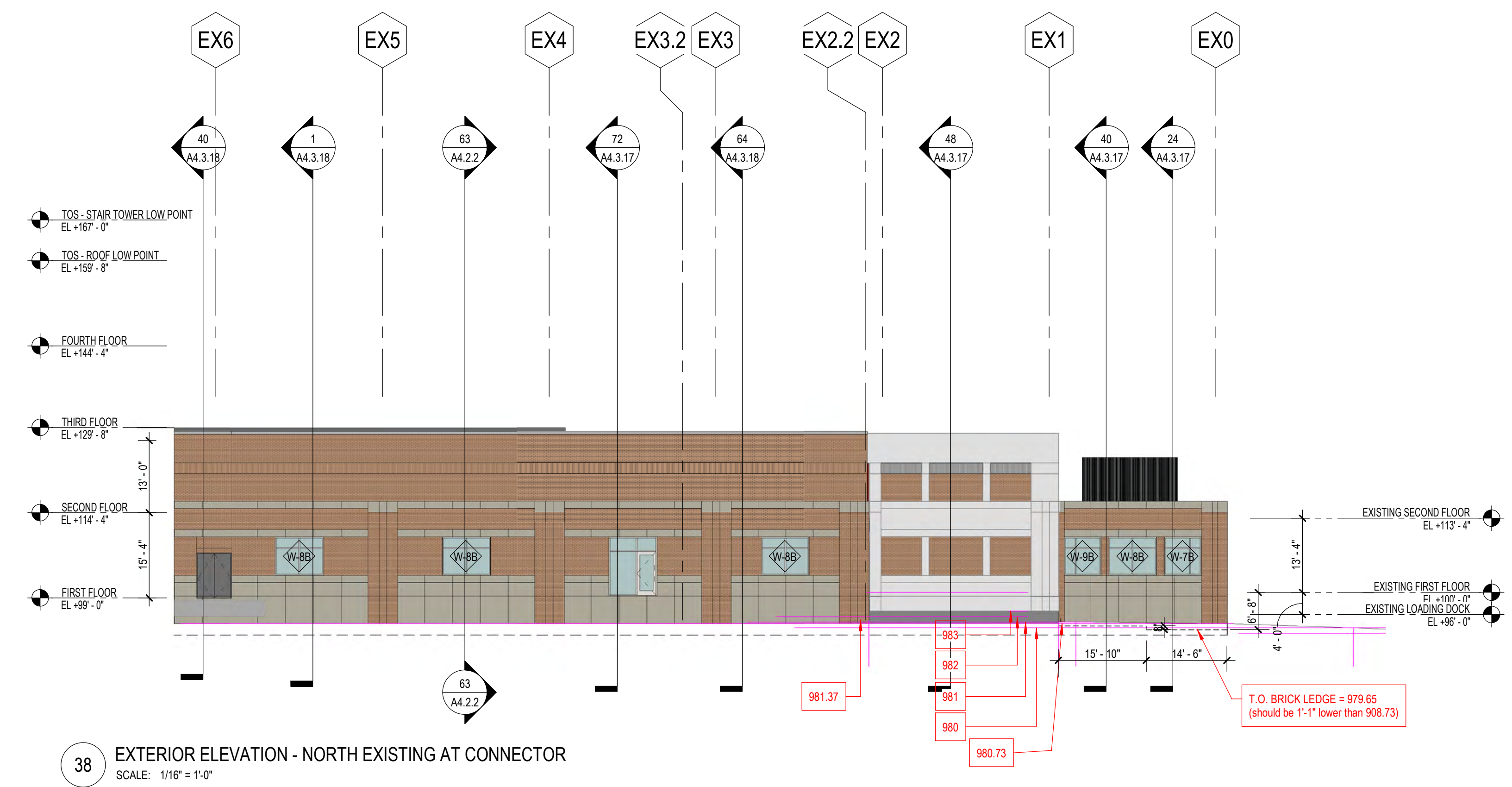
GRAPHIC LEGEND

- BRK-01
- PRC-01
- DCM-01
- DCM-02
- MCM-01
- GL-11
- GL-S1
- FMP-01

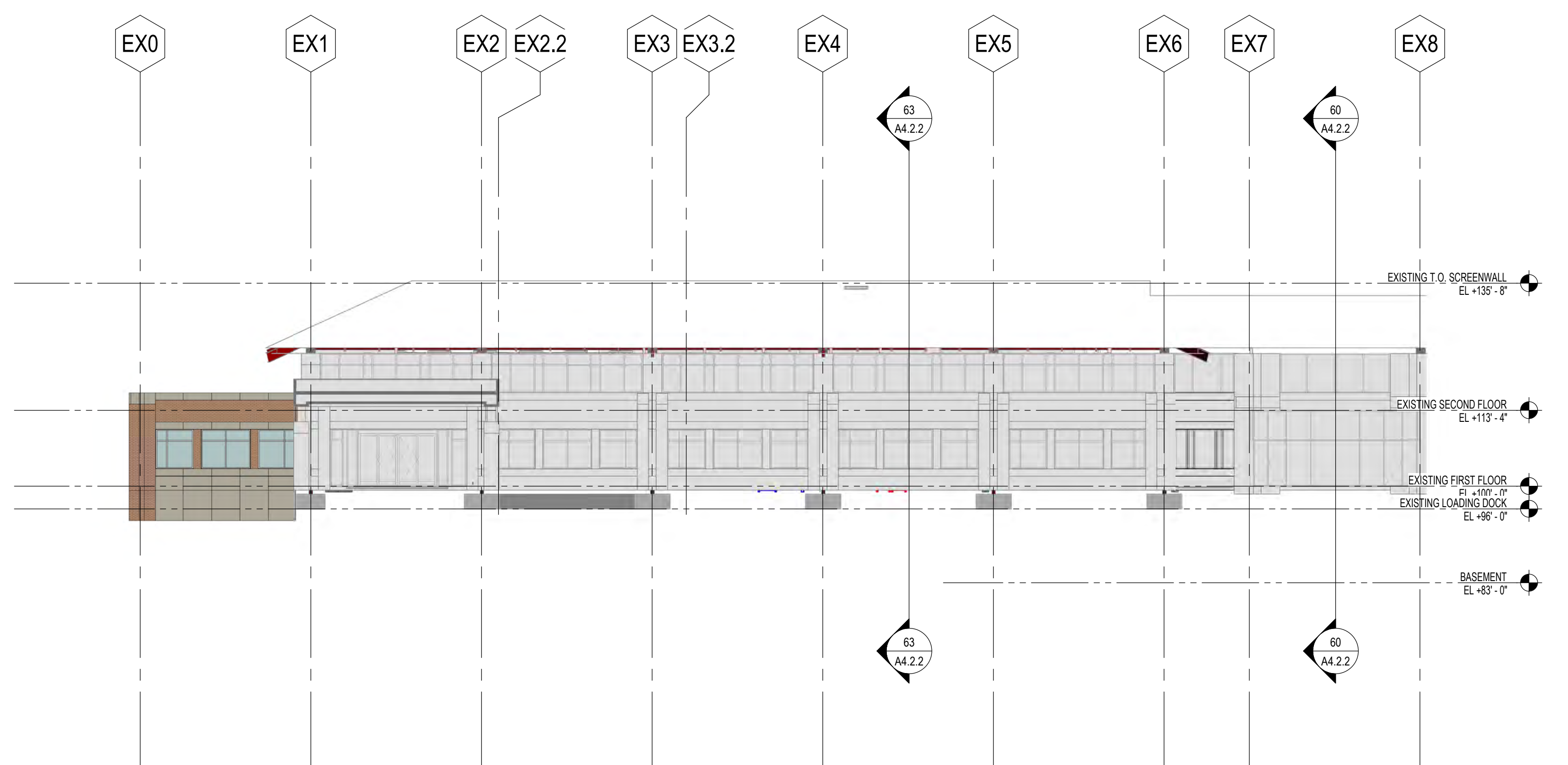
SIGNAGE TO BE PROVIDED BY THE OWNER. CONTRACTOR TO COORDINATE LOCATION OF SIGNAGE WITH THE OWNER PRIOR TO INSTALLATION OF EXTERIOR WALL ASSEMBLY. PROVIDE REQUIRED DESIGN SIGNAGE, REQUIRED STRUCTURAL SUPPORTS AND FASTENERS, AND POWER BASED ON THE FINAL SIGNAGE DESIGN AND WEIGHT

GENERAL SHEET NOTES

REFERENCE KEYNOTES



38 EXTERIOR ELEVATION - NORTH EXISTING AT CONNECTOR
SCALE: 1/16" = 1'-0"



40 EXTERIOR ELEVATION - SOUTH EXISTING
SCALE: 1/16" = 1'-0"

SHEET KEYNOTES



ST. JOSEPH MERCY
BRIGHTON
EXPANSION AND RENOVATION
7575 GRAND RIVER AVE., BRIGHTON, MI 48114
7555 GRAND RIVER AVE., BRIGHTON, MI 48114

SMITHGROUP

500 GRISWOLD
SUITE 1700
DETROIT, MI 48226
313.983.3600
smithgroup.com

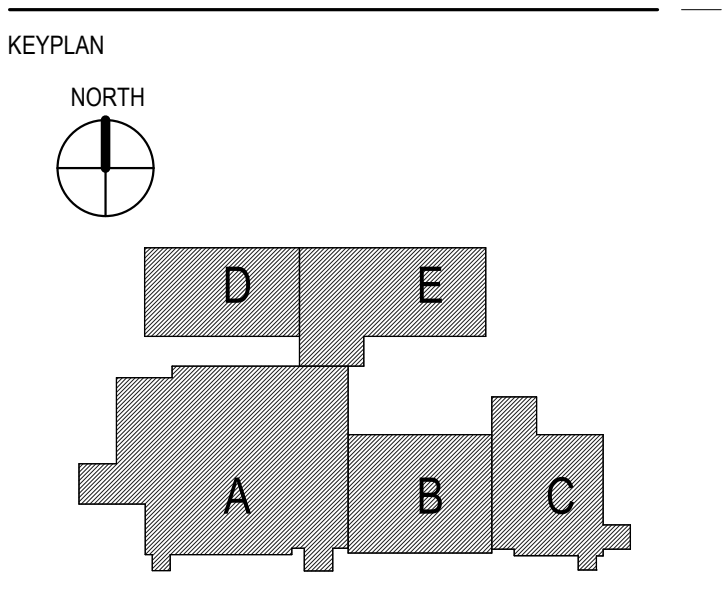


4833 WATER STONE LN PH: 513.480.4216
NAINEVILLE, OH www.imegcorp.com
45039

ISSUED FOR	REV	DATE
SITE PLAN RESUBMITTAL	D	04MAY22
SITE PLAN REVIEW	C	30MAR22
SCHEMATIC DESIGN	B	04MAR22
SD PROGRESS	A	22DEC21

SEALS AND SIGNATURES

NOT FOR CONSTRUCTION



SHEET TITLE
EXTERIOR BUILDING ELEVATIONS

PROJECT NUMBER
SG PROJECT #: 13472.000

SHEET NUMBER
A4.1.2

Plot Date: 5/3/2022 11:03:59 PM