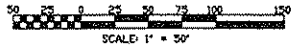
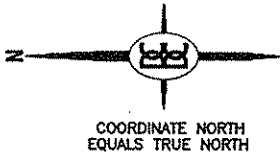


SITE PLAN



N = 800.57
E = 4011.68

UNIT REAR OFFSETS	
UNITS	# FT
1-2	21.17
2-3	21.17
4-5	19.17
5-6	21.17
7-8	9.00
8-9	2.00
9-10	7.42
11-12	7.42
12-13	2.00
13-14	9.00
15-16	17.75
16-17	2.00
17-18	0.00
18-19	-2.00
19-20	6.00
21-22	11.58
22-23	2.00
23-24	0.00
24-25	2.00
25-26	4.67
27-28	22.56
28-29	2.00
29-30	14.25

N = 1636.00
E = 3334.58

N = 1794.84
E = 3253.65

N = 1351.98
E = 3308.50

N = 1741.76
E = 3149.46

N = 1382.31
E = 3710.39

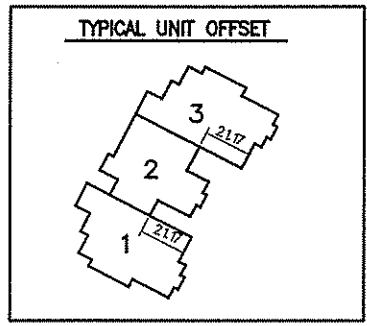
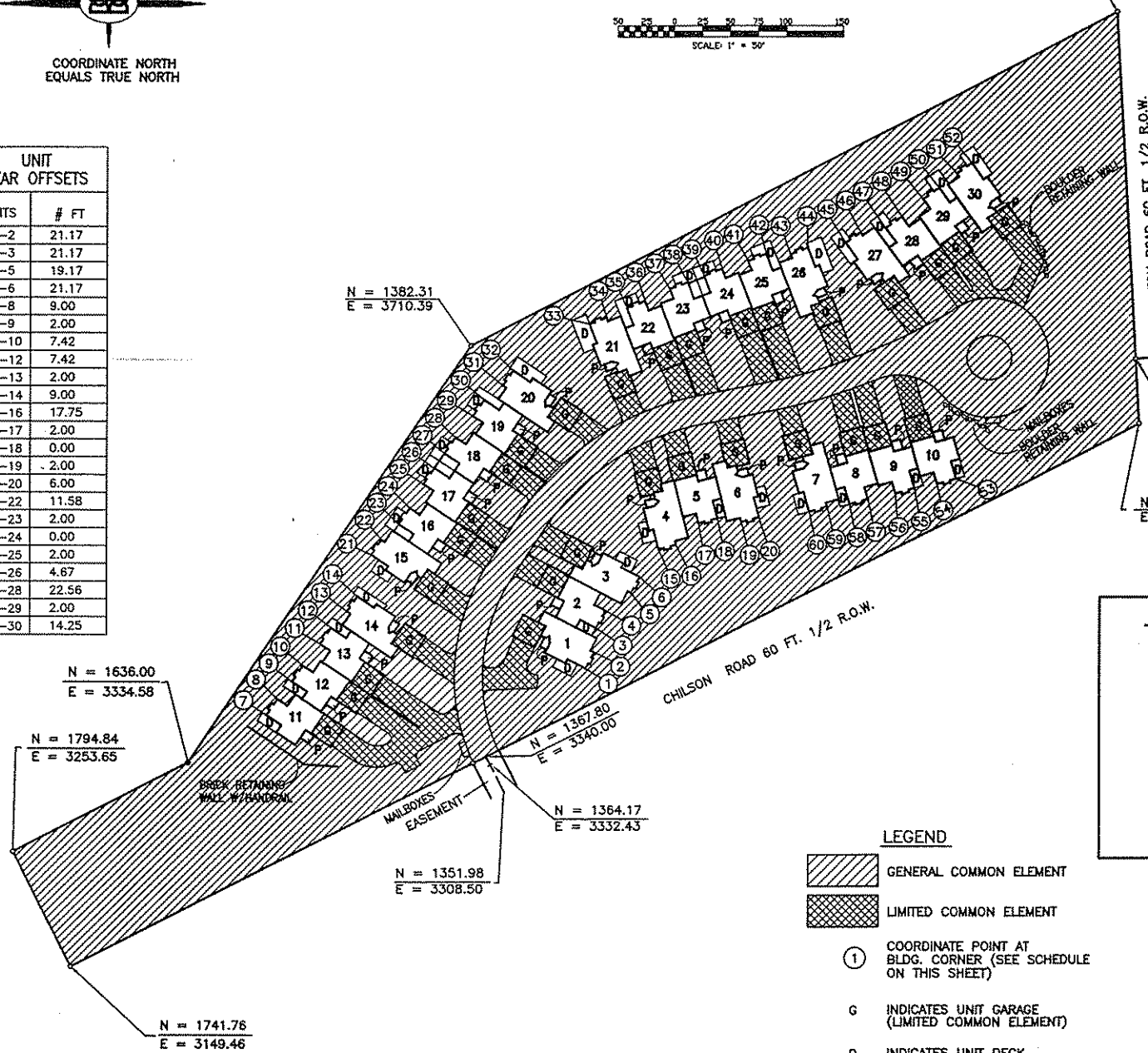
N = 1367.80
E = 3340.00

N = 1364.17
E = 3332.43

N = 722.86
E = 3701.70

N = 782.77
E = 3698.25

N = 779.65
E = 3639.67



- LEGEND**
- GENERAL COMMON ELEMENT
 - LIMITED COMMON ELEMENT
 - ① COORDINATE POINT AT BLDG. CORNER (SEE SCHEDULE ON THIS SHEET)
 - G INDICATES UNIT GARAGE (LIMITED COMMON ELEMENT)
 - D INDICATES UNIT DECK (LIMITED COMMON ELEMENT)
 - P INDICATES UNIT PORCH (LIMITED COMMON ELEMENT)

AS-BUILT
09-17-99

BUILDING COORDINATE CHART		
COORD. PT.	N	E
1	1278.95	3419.35
2	1271.39	3434.01
3	1269.54	3455.94
4	1261.40	3471.71
5	1237.87	3487.33
6	1230.31	3501.99
7	1564.79	3377.48
8	1555.03	3392.00
9	1542.01	3407.65
10	1532.25	3422.18
11	1516.83	3441.53
12	1507.07	3456.06
13	1492.66	3470.78
14	1483.48	3484.47
15	1213.19	3526.50
16	1197.20	3530.58
17	1176.69	3550.00
18	1159.74	3554.33
19	1138.04	3551.17
20	1122.05	3555.25
21	1470.90	3521.88
22	1461.66	3535.54
23	1446.18	3549.52
24	1436.38	3564.02
25	1424.22	3585.57
26	1414.42	3600.07
27	1405.55	3613.19
28	1395.75	3627.69
29	1380.28	3647.00
30	1370.48	3661.50
31	1353.54	3674.50
32	1344.30	3688.17
33	1275.88	3729.91
34	1260.50	3735.87
35	1242.03	3744.26
36	1225.71	3750.58
37	1203.43	3761.35
38	1187.11	3767.66
39	1172.34	3773.38
40	1156.02	3779.70
41	1132.30	3786.73
42	1115.98	3793.05
43	1094.17	3792.82
44	1078.79	3798.78
45	1044.74	3803.14
46	1031.32	3812.74
47	1009.15	3816.55
48	994.92	3826.73
49	976.03	3842.72
50	961.80	3852.90
51	946.20	3865.91
52	932.79	3875.51
53	946.08	3589.95
54	962.90	3585.11
55	982.94	3581.51
56	999.75	3576.67
57	1024.01	3571.77
58	1040.83	3566.93
59	1061.33	3564.94
60	1077.18	3560.37

BOSS ENGINEERING
ENGINEERS & SURVEYORS
100 E. GRAND RIVER
HOWELL, MI 48843
PHONE (517) 644-3636
FAX (517) 648-9870

DATE	REVISION

CLIENT: BECK BUILDING COMPANY, INC.
PROJECT: FAIRWAYS AT OAK POINTE
TITLE: SITE PLAN

DATE	REVISION

DESIGNED BY: _____
DRAWN BY: _____
CHECKED BY: _____
SCALE: 1"=60'
JOB NO. 99357
DATE: 09/17/99
SHEET NO. 3



LIBER 2734 PAGE 0719