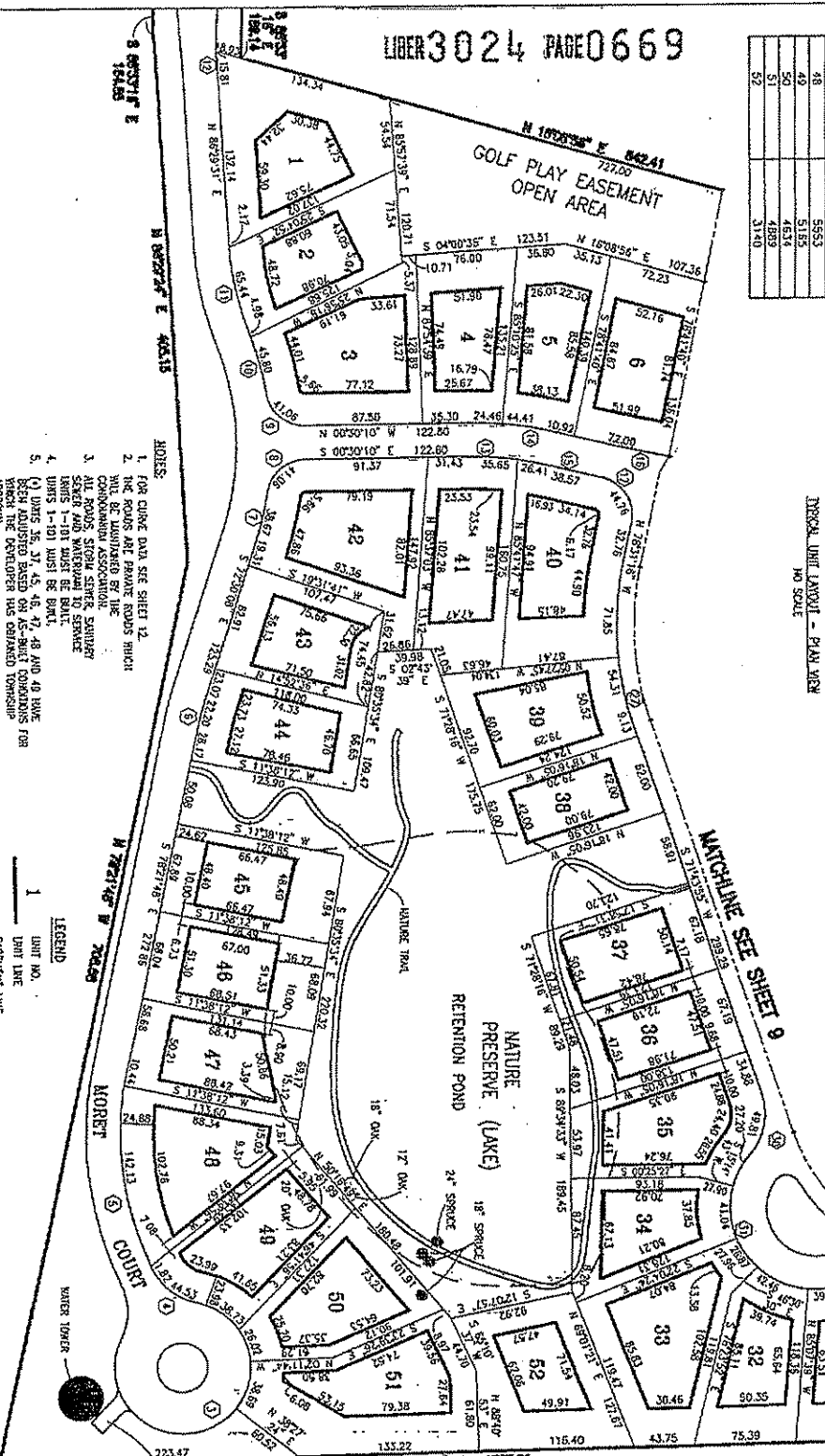
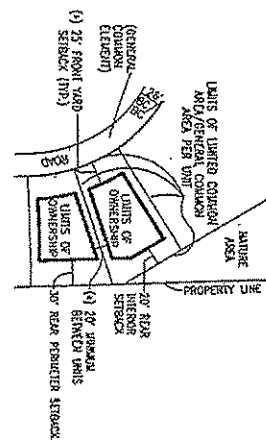
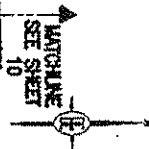
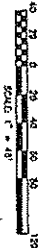


Unit No.	Area Sq. Ft.
1	3176
2	3272
3	3485
4	3582
5	3684
6	3884
7	4084
8	4284
9	4484
10	4684
11	4884
12	5084
13	5284
14	5484
15	5684
16	5884
17	6084
18	6284
19	6484
20	6684
21	6884
22	7084

UNIT AREAS AND PERIMETERS



- NOTES:**
1. FOR CURVE DATA SEE SHEET 12
 2. THE POINTS ARE FOR THE ROADS WHICH ARE TO BE CONVEYED TO THE COMMUNITY ASSOCIATION.
 3. ALL ROADS SHALL BE GRADED, SLOPED, STAKED AND WATERWAY TO SERVICE UNITS 1-101 MUST BE BUILT.
 4. UNITS 1-101 MUST BE BUILT.
 5. (O) DIMS 36, 37, 45, 46, 47, 48 AND 49 HAVE BEEN ADJUSTED BASED ON AS-BUILT CONDITIONS FOR THE ROAD TO BE DEVELOPED THE DEMAND TOWNSHIP APPROVAL.

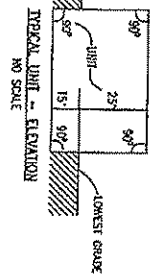
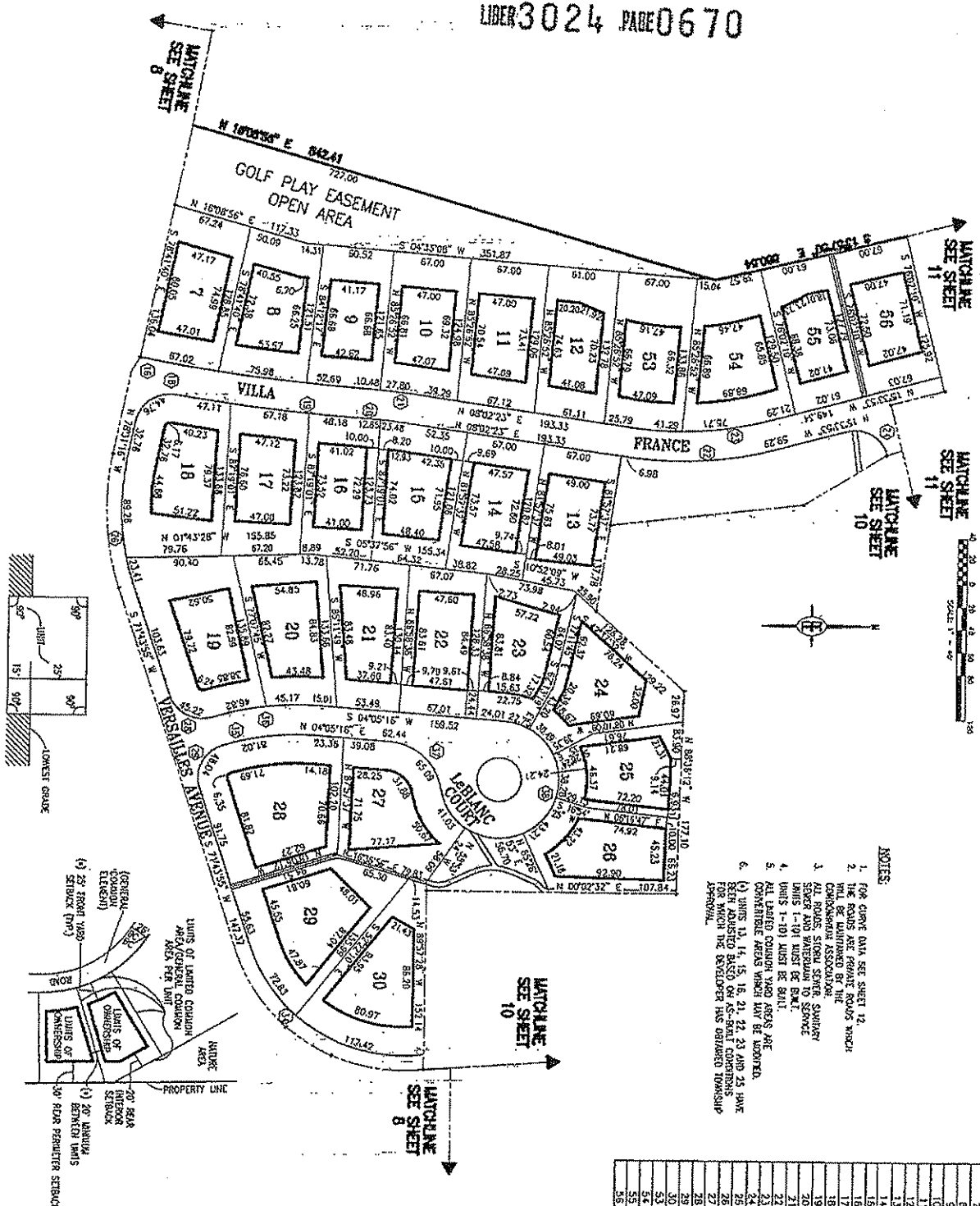
- LEGEND:**
- 1 UNIT NO.
 - UNIT LINE
 - EXISTING UNIT LINE



PROPOSED AS OF MAY 15, 2001

<p>8</p>	CLIENT	DELICOR HOMES	<p>BOSS ENGINEERING ENGINEERS & SURVEYORS 3121 E GRAND RIVER HOWELL, MICHIGAN 48843 HOWELL, (517) 540-4810 BRIGHTON (810) 229-4773 FAX: (517) 548-1670</p>
	PROJECT	VILLAS OF OAK POINTE	
	TITLE	UNIT AREAS & PERIMETERS	

UNIT AREAS AND PERIMETERS



- NOTES
1. FOR CURVE DATA SEE SHEET 12.
 2. THE ROADS ARE PRIVATE ROADS AND WILL BE MAINTAINED BY THE HOMEOWNERS ASSOCIATION.
 3. ALL ROADS, STREET LIGHTS, SWIMMING POOLS, AND OTHER AMENITIES ARE TO BE PROVIDED BY THE DEVELOPER.
 4. UNITS 1-101 MUST BE BUILT.
 5. ALL UNITS MUST BE BUILT BY THE DEVELOPER.
 6. UNITS 11, 14, 15, 16, 21, 22, 23 AND 24 HAVE BEEN ADJUSTED BASED ON A 15' SETBACK FOR WHICH THE DEVELOPER HAS OBTAINED APPROVAL.

Unit No.	Area Sq. Ft.
2	3249
3	3258
4	2298
5	3193
6	3193
7	3035
8	3035
9	3177
10	3281
11	2985
12	2985
13	3177
14	3281
15	2985
16	2985
17	3177
18	3281
19	3177
20	3177
21	3177
22	3177
23	3177
24	3177
25	3177
26	3177
27	3177
28	3177
29	3177
30	3177
31	3177
32	3177
33	3177
34	3177
35	3177
36	3177

LEGEND

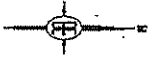
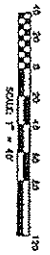
- UNIT NO.
- UNIT LINE
- EASEMENT LINE



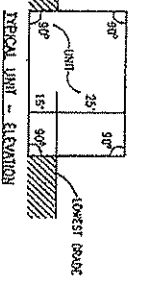
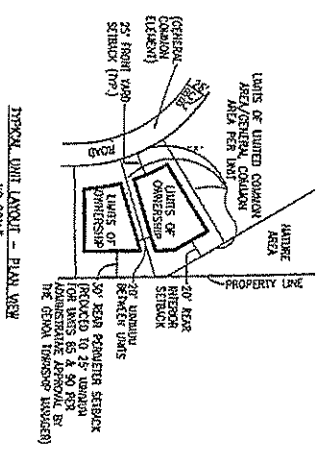
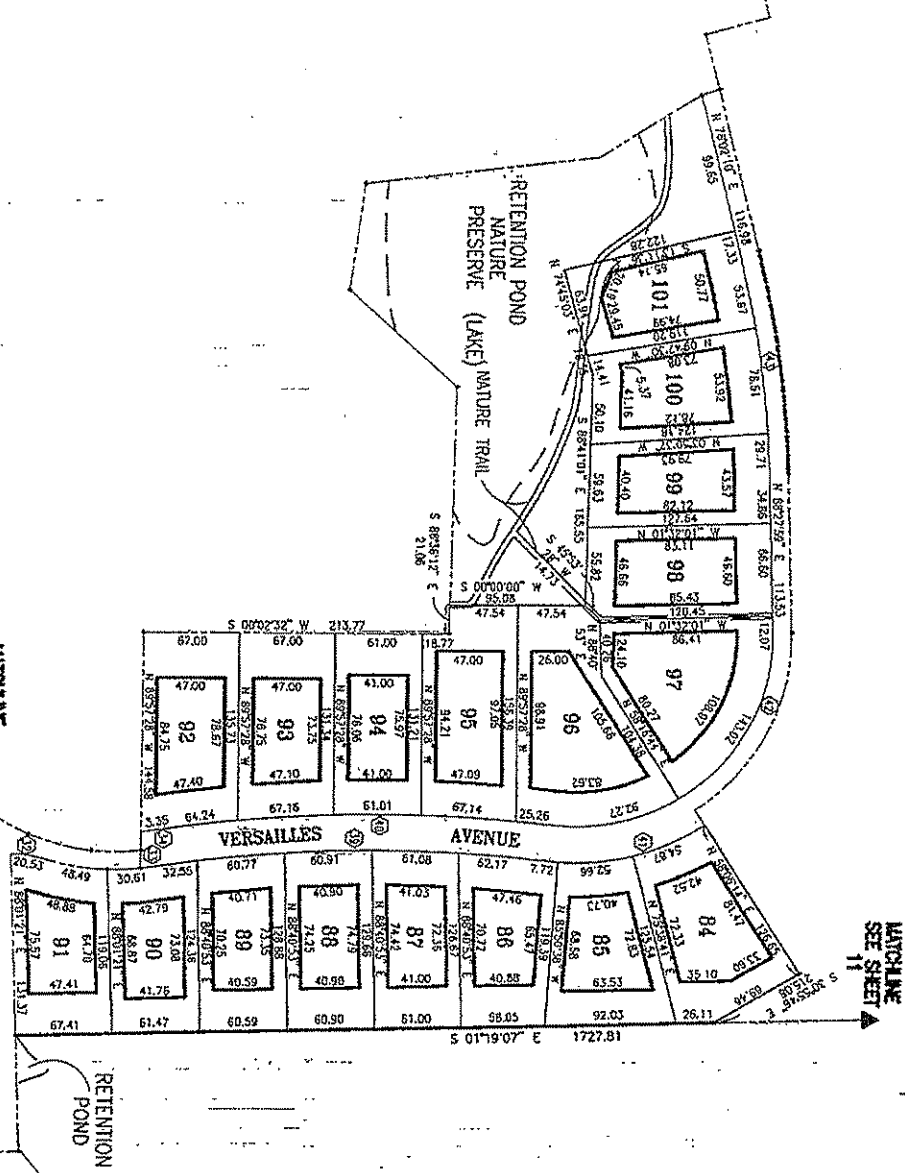
PROPOSED AS OF MAY 15, 2001

<p>9</p>	CLIENT	DELICOR HOMES	<p>BOSS ENGINEERING ENGINEERS & SURVEYORS 300 E. GRAND RIVER HOWELL, MICHIGAN 48840 HOWELL (517) 545-8240 BRIGHTON (616) 225-4773 P.O. BOX 10775 HOWELL, MI 48846-0775</p>
	PROJECT	VILLAS OF OAK POINTE	
	TITLE	UNIT AREAS & PERIMETERS	

UNIT AREAS & PERIMETERS

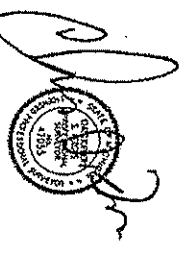


UNIT NO.	Area Sq. Ft.
91	4370
92	3800
93	3008
94	3015
95	2920
96	2920
97	2975
98	3273
99	3842
100	3528
101	3111
102	4406
103	5873
104	5484
105	3927
106	3181
107	3265
108	3995



- NOTES:**
1. FOR CURVE DATA SEE SHEET 12.
 2. THE ROADS ARE PRIVATE ROADS WHICH WILL BE MAINTAINED BY THE HOMEOWNERS ASSOCIATION.
 3. ALL ROADS, STORM SEWER, SANITARY SEWER AND WATERMANS TO SERVICE UNITS 1-101 MUST BE BUILT.
 4. UNITS 1-101 MUST BE BUILT.

LEGEND
 UNIT NO.
 UNIT LINE
 EXISTENT CURVE



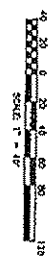
PROPOSED AS OF MAY 15, 2001

CLIENT	DELCOE HOMES
PROJECT	VILLAS OF OAK POINT
TITLE	UNIT AREAS & PERIMETERS
DATE	

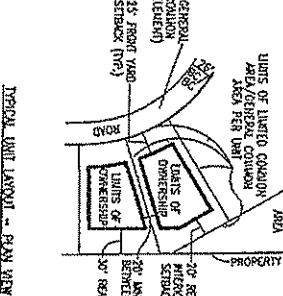
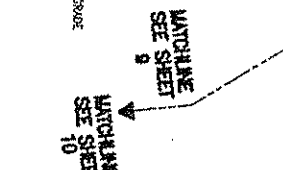
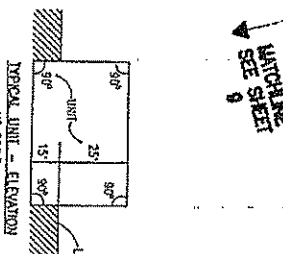
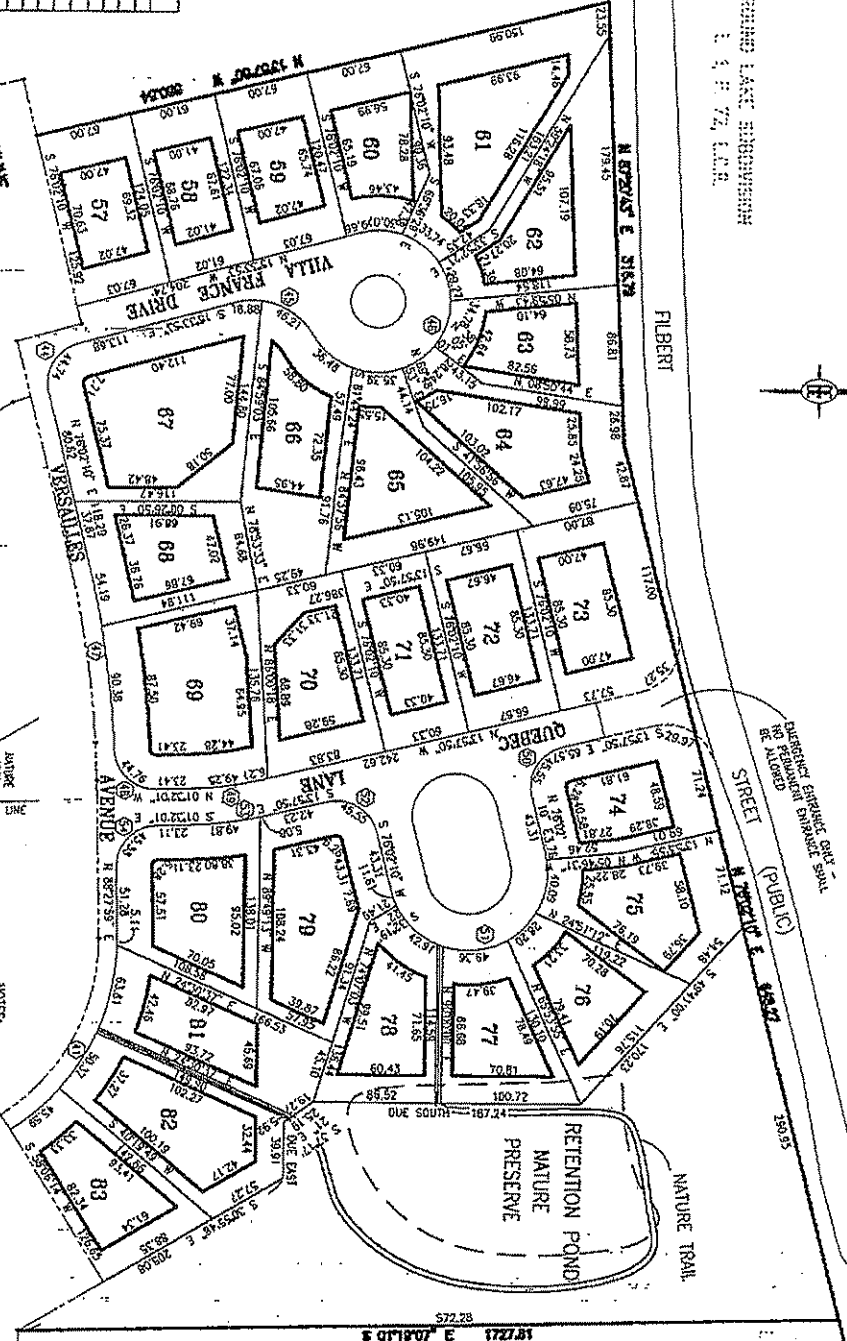
BOSS ENGINEERING
ENGINEERS & SURVEYORS
 3121 E. GRAND RIVER HOWELL, MICHIGAN 48843
 HOWELL (517) 545-4830 BRIGHTON (517) 220-4773
 FAX (517) 545-7670

UNIT AREAS AND PERIMETERS

BOSS ENGINEERING
E. S. 772, L.L.R.



Unit No.	Area Sq. Ft.
57	3309
58	3362
59	3121
60	3242
61	3654
62	3022
63	3172
64	3453
65	3729
66	3281
67	3890
68	3923
69	3709
70	3902
71	3492
72	3677
73	4008
74	3177
75	3150
76	3571
77	3727
78	4060
79	4216
80	4638
81	3638
82	5891
83	4017



- NOTES:**
- FOR COME DATA SEE SHEET 12.
 - THE ROADS ARE PRIVATE ROADS WHICH SHALL BE MAINTAINED BY THE CONDOMINIUM ASSOCIATION.
 - SEWER AND WATER SERVICE SHALL BE PROVIDED BY THE CITY OF OAK POINT.
 - UNIT 1-101 MUST BE BUILT.
 - QUEBEC LAKE SHALL BE PROMINENTLY MARKED WITH EMBLEMATIC ACCESS ONLY TO PUBLIC STREET. THE EMBLEMATIC ACCESS SHALL BE MAINTAINED BY THE CONDOMINIUM ASSOCIATION.

LEGEND

- UNIT NO.
- UNIT LINE
- ESSENTIAL LINE

PROPOSED AS OF MAY 15, 2001

CLIENT	DRICOR HOMES
PROJECT	VILLAS OF OAK POINTE
TITLE	UNIT AREAS & PERIMETERS

BOSS ENGINEERING
ENGINEERS & SURVEYORS

3121 E. GRAND RIVER HOWELL, MICHIGAN 48842
HOWELL (517) 546-6656 BRIGHTON (248) 229-4773
FAX (517) 546-7070