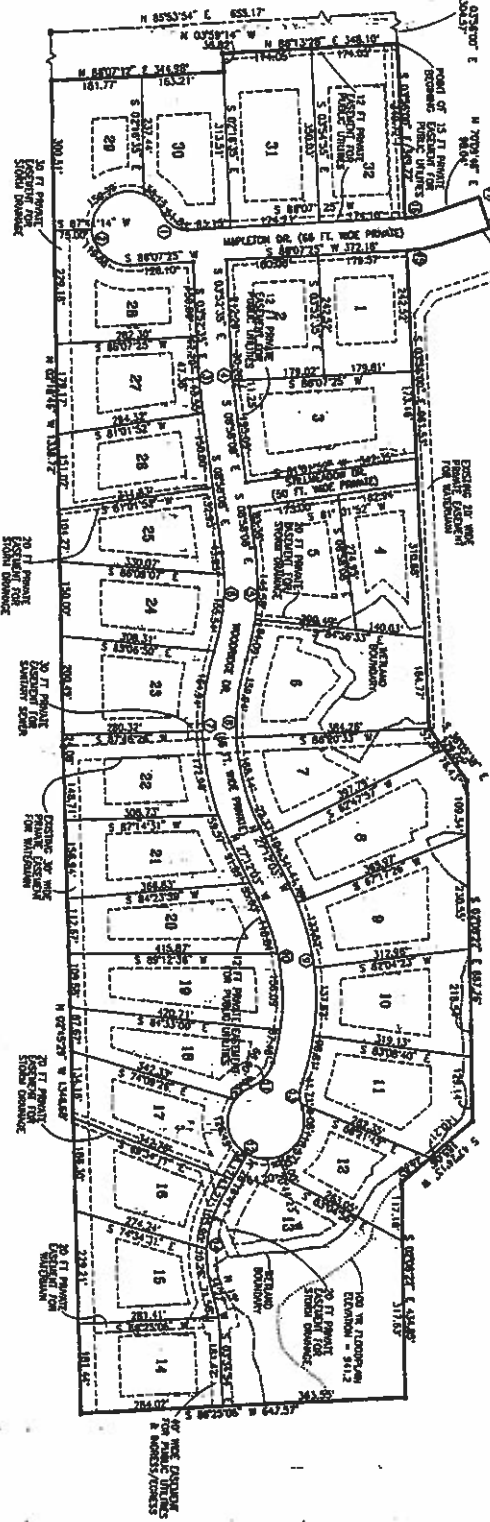
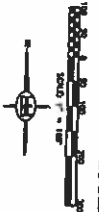


# UNIT AREAS & PERIMETER PLAN

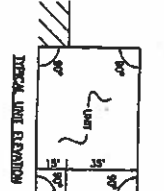
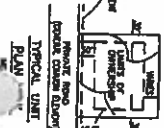


UNIT NO.	UNIT AREA (S.F.)	UNIT NO.	UNIT AREA (S.F.)
1	4,572	17	4,798
2	4,814	18	4,794
3	4,804	19	5,276
4	4,800	20	5,090
5	4,800	21	4,881
6	4,800	22	4,877
7	5,000	23	4,873
8	4,885	24	4,182
9	5,073	25	4,581
10	5,518	26	4,581
11	5,831	27	4,753
12	4,852	28	4,811
13	5,128	29	4,815
14	5,833	30	4,815
15	5,833	31	6,985
16	4,872	32	6,913

CURVE NO.	POINTS	CHORD ANGLE	ARC LENGTH	CHORD LENGTH	BEARING DIRECTION
1	50.00	70.510°	61.83	57.97	S 82°27'0" E
2	75.00	109.703°	142.87	128.35	S 61°23'0" E
3	55.00	62.035°	47.37	47.35	S 60°27'0" E
4	48.750	69.713°	41.51	41.49	S 60°27'0" E
5	55.000	72.712°	72.246	72.246	S 60°27'0" E
6	48.750	72.712°	72.246	72.246	S 60°27'0" E
7	48.750	72.712°	72.246	72.246	S 60°27'0" E
8	55.000	62.035°	47.37	47.35	S 60°27'0" E
9	55.000	62.035°	47.37	47.35	S 60°27'0" E
10	48.750	62.035°	47.37	47.35	S 60°27'0" E
11	25.000	51.797°	24.240	24.240	S 60°27'0" E
12	25.000	51.797°	24.240	24.240	S 60°27'0" E
13	25.000	51.797°	24.240	24.240	S 60°27'0" E
14	25.000	51.797°	24.240	24.240	S 60°27'0" E
15	25.000	51.797°	24.240	24.240	S 60°27'0" E
16	18.430	15.917°	34.48	34.30	S 60°27'0" E
17	18.430	15.917°	34.48	34.30	S 60°27'0" E



- LEGEND**
- EXISTING
  - PROPOSED
  - UNIT LINE
  - BUILDING SERVICE LINE
  - WALL/BOUNDRY
  - PROPERTY BOUNDARY
  - UNIT NO.
  - CURVE NO.
  - BOUNDARY



PROPOSED AS OF JANUARY 11, 2001

CLIENT	NORTH SHORE LAND DEVELOPMENT
PROJECT	NORTH SHORE WOODS
TITLE	UNIT AREAS & PERIMETER PLAN
DATE	
SCALE	
BY	
CHECKED BY	
APPROVED BY	
DATE	

**BOSS ENGINEERING**  
 ENGINEERS, ARCHITECTS & PLANNERS  
 LANDSCAPE ARCHITECTS

10000 N. W. 10th Ave., Suite 100, Ft. Lauderdale, FL 33309  
 Phone: (954) 575-1111 Fax: (954) 575-1112  
 Website: www.bosseng.com