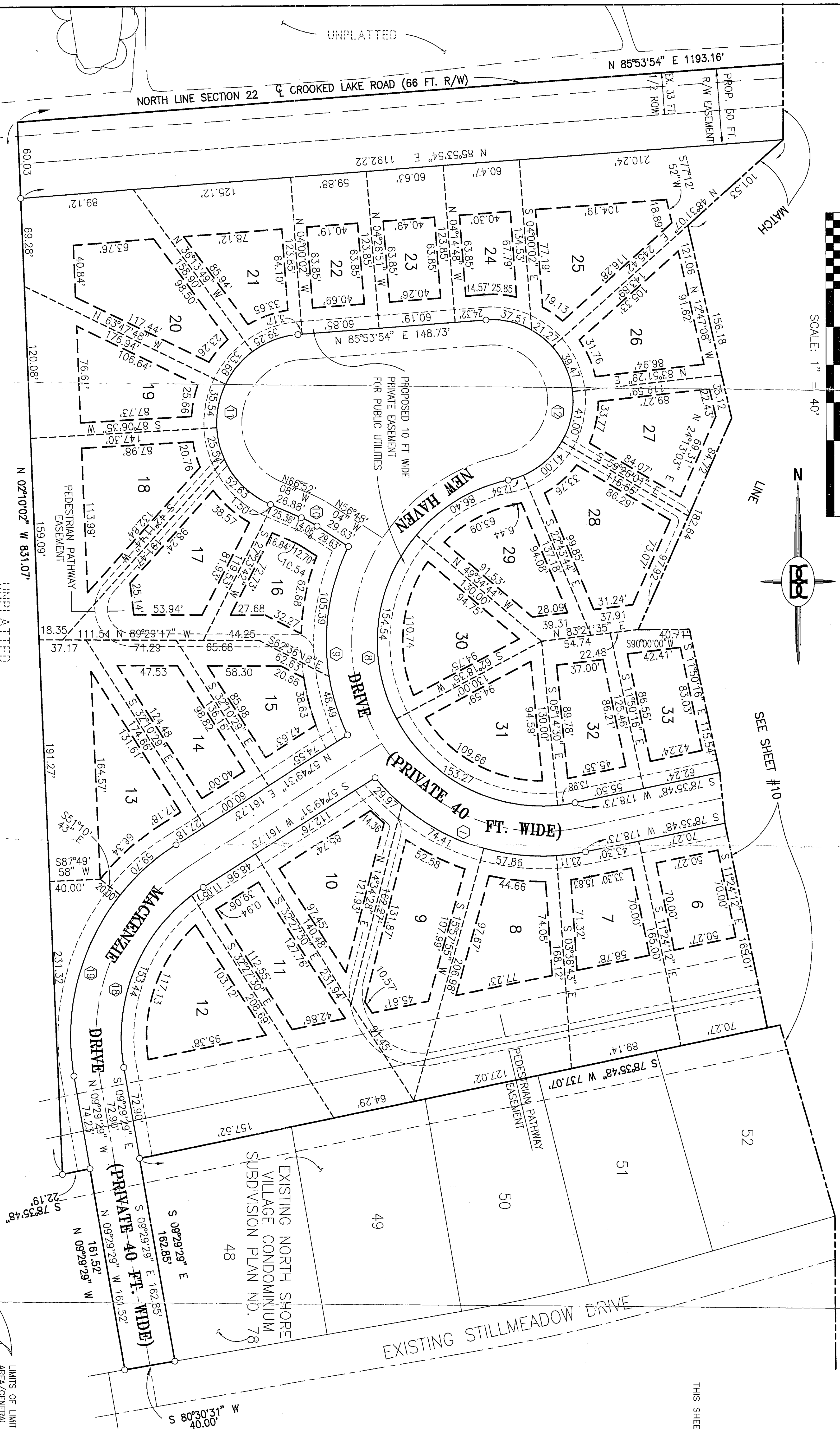


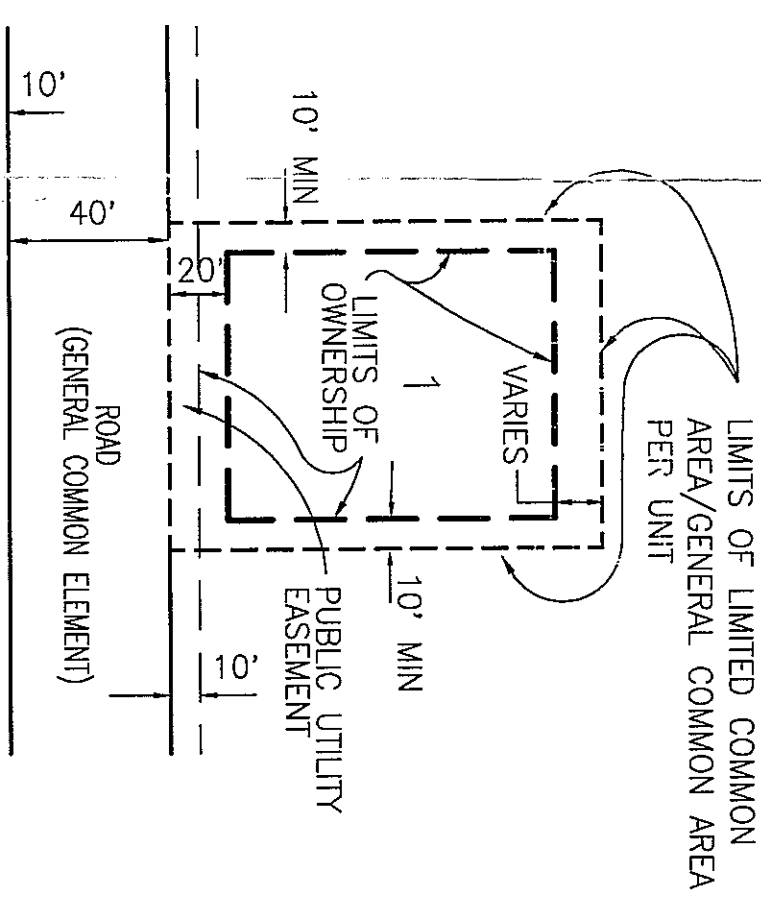
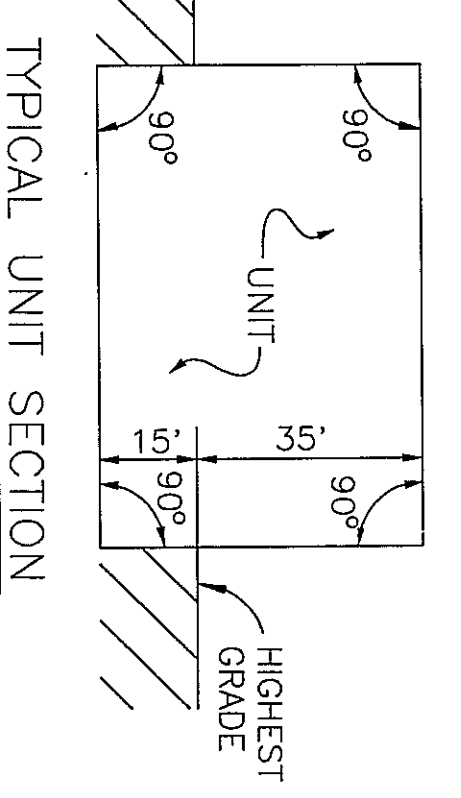
**UNIT AREAS & PERIMETERS**



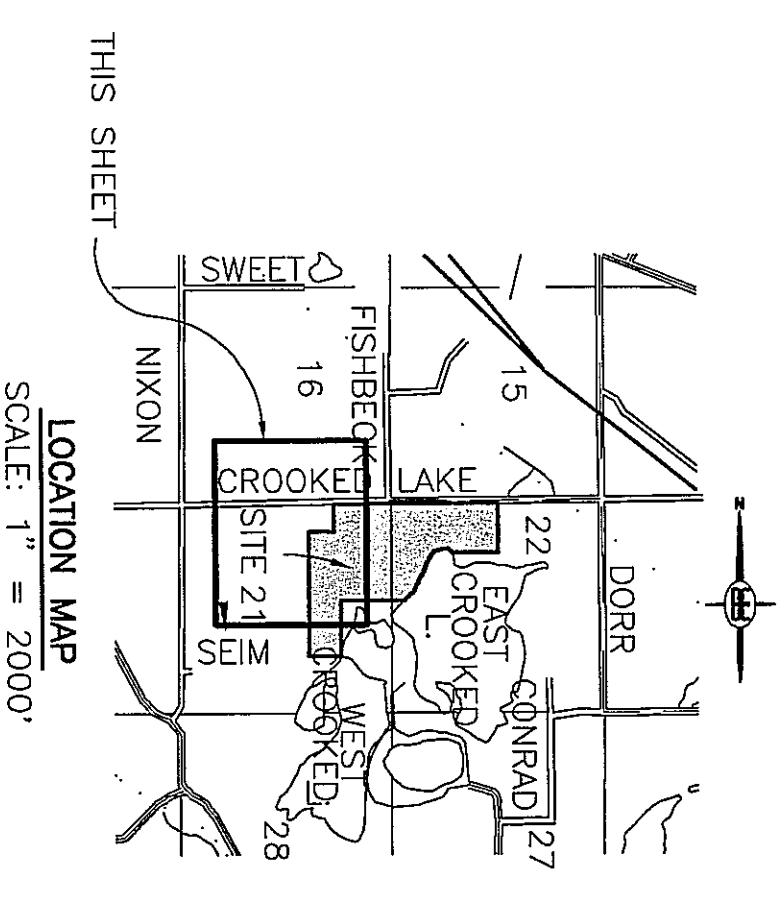
**CURVE DATA**

CURVE	RADIUS	CENTRAL ANGLE	ARC LENGTH	CHORD LENGTH	BEARING DIRECTION
7	170.00	62°28'20"	185.36	176.31	N 70°10'02" W
8	130.00	179°54'08"	408.19	260.00	S 11°27'08" E
9	170.00	51°51'40"	153.87	148.68	N 00°30'43" E
10	80.00	109°04'04"	14.06	14.04	N 61°50'06" W
11	70.00	152°46'02"	186.64	136.07	N 09°30'53" E
12	64.00	172°36'01"	192.80	127.73	S 07°48'05" E
18	140.00	67°19'00"	164.49	155.19	S 24°10'01" W
19	180.00	67°19'00"	211.48	199.53	N 24°10'01" E

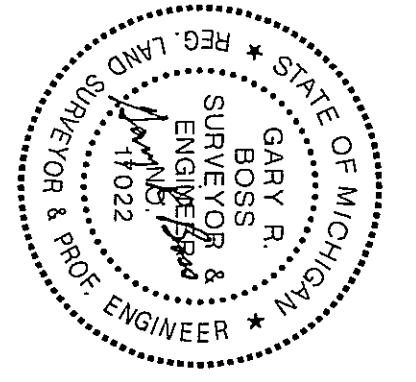
- NOTE: 1. THE ROADS WITHIN NORTH SHORE COMMONS ARE PRIVATE ROADS WHICH WILL BE MAINTAINED BY THE NORTH SHORE COMMONS ASSOCIATION. EASEMENTS OVER LAKEWOOD SHORES DRIVE, OAK BLUFF COURT, STILLMEADOW DRIVE AND MACKENZIE COURT WERE CREATED IN THE DECLARATION OF EASEMENTS, COVENANTS, CONDITIONS AND RESTRICTIONS FOR THE NORTH SHORE COMMUNITY AS RECORDED IN LIBER 1947, PAGE 0049, LIVINGSTON COUNTY RECORDS. LAKEWOOD SHORES DRIVE, OAK BLUFF COURT, STILLMEADOW DRIVE AND MACKENZIE COURT WILL BE OWNED AND MAINTAINED BY THE NORTH SHORE COMMUNITY ASSOCIATION UNTIL SUCH TIME AS THEY ARE DEDICATED TO THE PUBLIC.
2. ALL ROADWAYS, STORM SEWER, SANITARY SEWER AND WATER MAIN WITHIN NORTH SHORE COMMONS MUST BE BUILT.
3. UNITS 1 THROUGH 49 MUST BE BUILT.
4. ALL LIMITED COMMON YARD AREAS ARE CONVERTIBLE AREAS WHICH MAY BE MODIFIED.



UNIT NO.	AREA	UNIT NO.	AREA
6	3,519	20	6,399
7	3,783	21	3,843
8	4,940	22	2,582
9	6,154	23	2,578
10	4,942	24	2,597
11	4,806	25	6,178
12	5,653	26	5,509
13	5,201	27	5,432
14	4,466	28	6,479
15	3,680	29	4,391
16	2,994	30	5,143
17	3,047	31	3,085
18	6,173	32	3,894
19	4,664	33	3,581



PROPOSED AS OF  
FEBRUARY 26, 1996

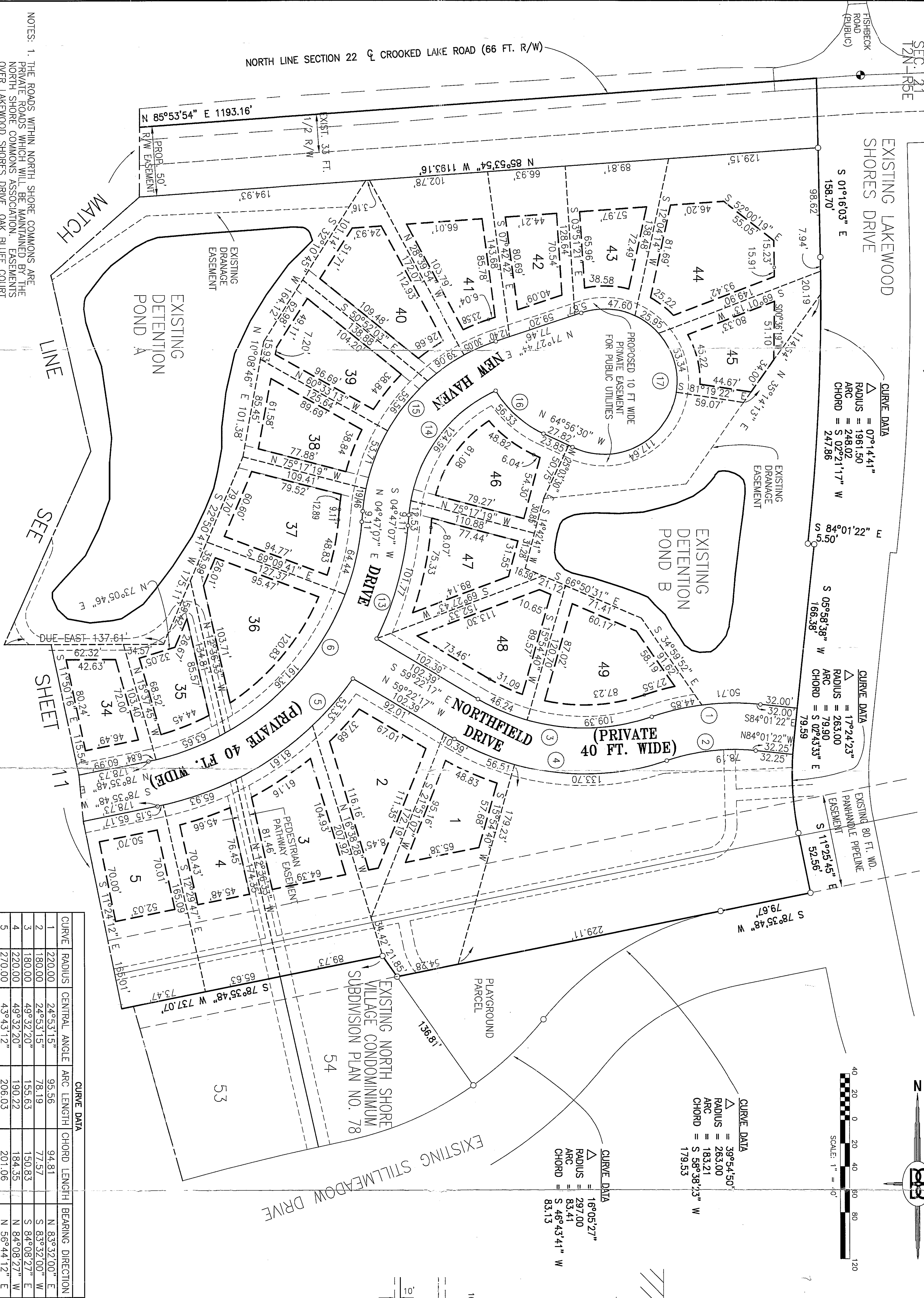


CLIENT <b>NORTH SHORE LAND DEVELOPMENT</b>	PROJECT <b>NORTH SHORE COMMONS</b>	TITLE <b>UNIT AREAS &amp; PERIMETERS</b>	AGENCY APPROVAL _____ DATE _____	
			DESIGNED BY: KCS DRAWN BY: OEA	
			CHECKED BY: DEL SCALE: 1"=40' JOB NO. 95034 DWG. NO. H55034X20 DATE: 2-9-96 SHEET NO. <b>11</b>	

**BOSS ENGINEERING**  
**ENGINEERS & SURVEYORS**  
 3121 E. GRAND RIVER HOWELL, MICHIGAN 48843  
 HOWELL (517) 546-4836 BRIGHTON (313) 229-4773  
 FAX (517) 548-1670

# UNIT AREAS & PERIMETERS

AREA OF FUTURE EXPANSION



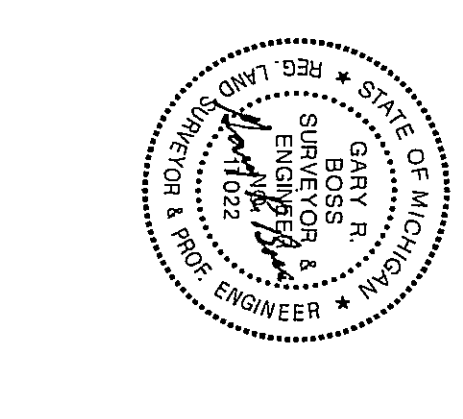
NOTES: 1. THE ROADS WITHIN NORTH SHORE COMMONS ARE PRIVATE ROADS WHICH WILL BE MAINTAINED BY THE NORTH SHORE COMMONS ASSOCIATION. EASEMENTS OVER LAKEWOOD SHORES DRIVE, OAK BLUFF COURT, STILLMEADOW DRIVE AND MACKENZIE COURT WERE CREATED IN THE DECLARATION OF EASEMENTS, COVENANTS, CONDITIONS AND RESTRICTIONS FOR THE NORTH SHORE COMMUNITY AS RECORDED IN LIBER 1947, PAGE 0049, LIVINGSTON COUNTY RECORDS. LAKEWOOD SHORES DRIVE, OAK BLUFF COURT, STILLMEADOW DRIVE AND MACKENZIE COURT WILL BE OWNED AND MAINTAINED BY THE NORTH SHORE COMMUNITY ASSOCIATION UNTIL SUCH TIME AS THEY ARE DEDICATED TO THE PUBLIC.

2. ALL ROADWAYS, STORM SEWER, SANITARY SEWER AND WATER MAIN WITHIN NORTH SHORE COMMONS MUST BE BUILT.

3. UNITS 1 THROUGH 49 MUST BE BUILT.

4. ALL LIMITED COMMON YARD AREAS ARE CONVERTIBLE AREAS WHICH MAY BE MODIFIED.

CURVE	RADIUS	CENTRAL ANGLE	ARC LENGTH	CHORD LENGTH	BEARING DIRECTION
1	220.00	24°53'15"	95.56	94.81	N 83°32'00" E
2	180.00	24°53'15"	78.19	77.57	S 83°32'00" W
3	180.00	49°32'20"	155.63	150.83	S 84°08'27" E
4	220.00	49°32'20"	190.22	184.35	N 84°08'27" W
5	270.00	43°43'12"	206.03	201.06	N 56°44'12" E
6	230.00	73°48'41"	296.30	276.23	N 41°41'27" E
3	270.00	21°35'43"	101.77	101.16	S 15°34'59" W
14	130.00	60°35'50"	137.49	131.17	S 35°05'02" W
15	170.00	66°40'37"	197.83	186.86	N 38°07'25" E
16	95.00	33°58'15"	56.33	55.50	N 47°57'23" E
17	63.00	224°04'35"	246.38	116.79	S 03°30'01" W



PROPOSED AS OF  
FEBRUARY 26, 1996

CLIENT	NORTH SHORE LAND DEVELOPMENT
PROJECT	NORTH SHORE COMMONS
TITLE	UNIT AREAS & PERIMETERS
DESIGNED BY:	KCS
DRAWN BY:	LJH
CHECKED BY:	DBE
SCALE:	1" = 40'
JOB NO.:	95034
DWG. NO.:	H95034X19
DATE:	02-02-96
SHEET NO.:	10

**BOSS ENGINEERING**  
ENGINEERS & SURVEYORS

3121 E. GRAND RIVER HOWELL, MICHIGAN 48843  
HOWELL (517) 546-4836 BRIGHTON (313) 229-4773  
FAX (517) 548-1670