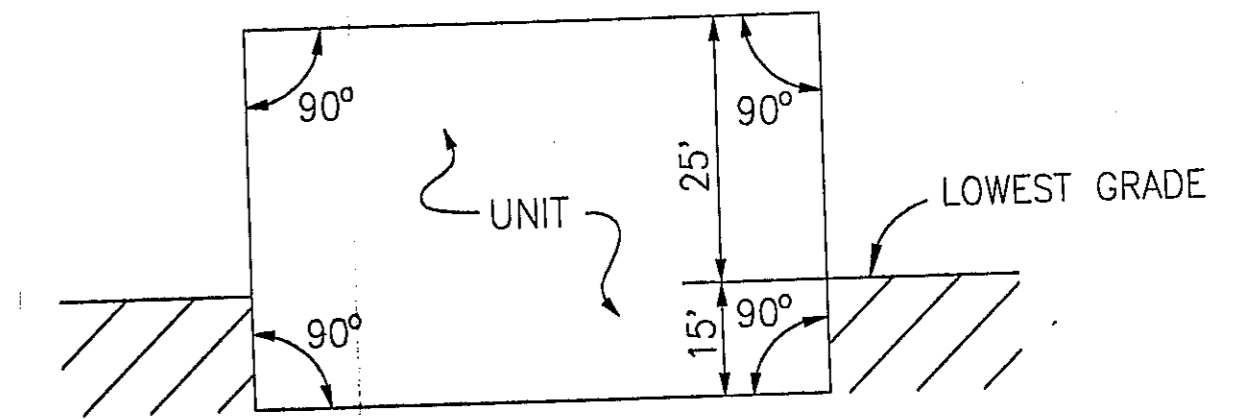


UNIT AREAS & PERIMETER PLAN

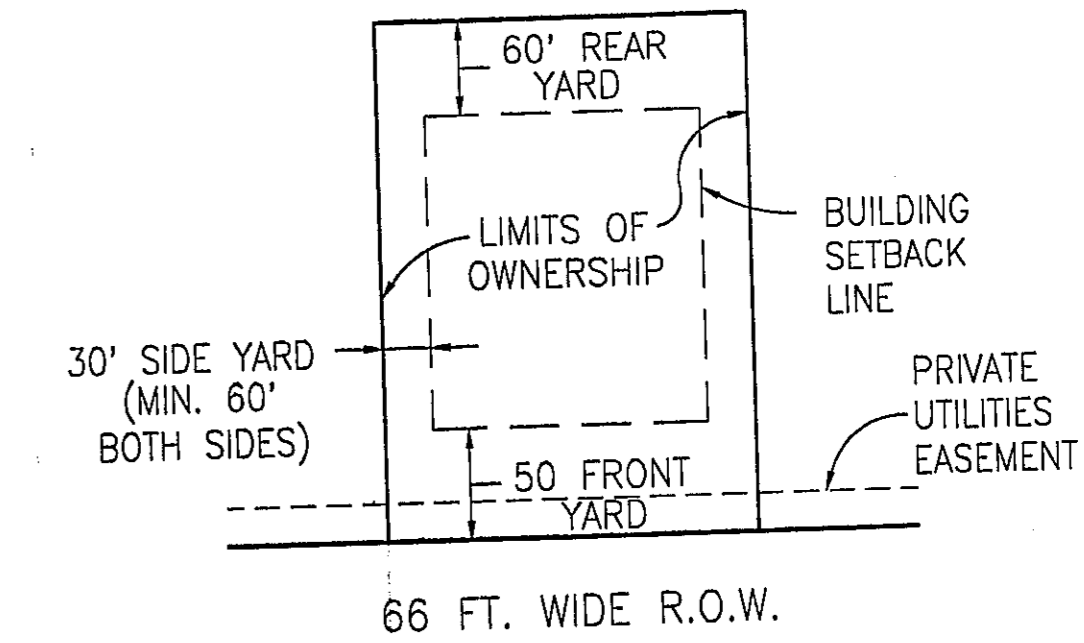
100 0 50 100
SCALE: 1 INCH = 100 FEET



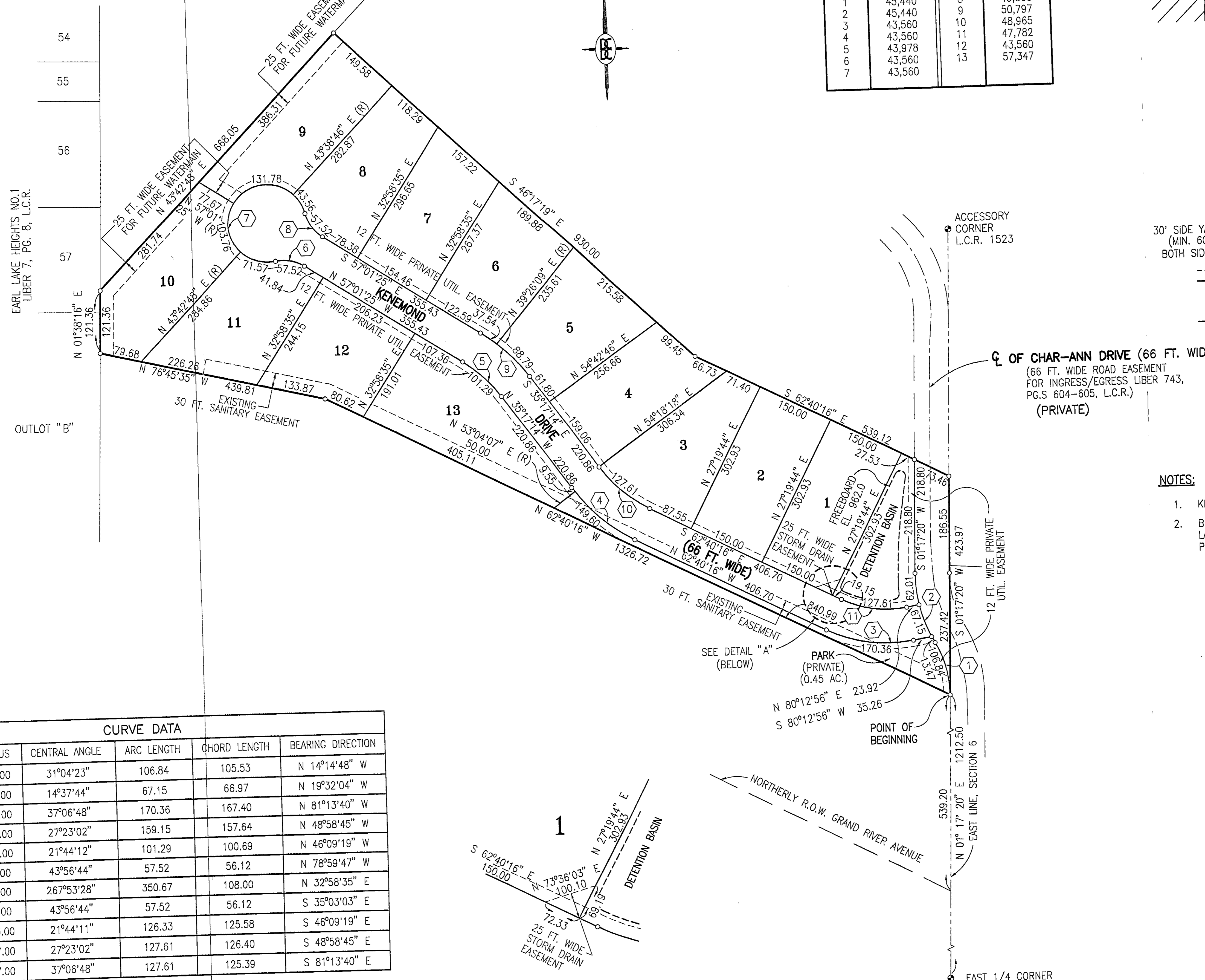
SCHEDULE OF UNIT AREAS			
UNIT NO.	AREA (SQ. FT.)	UNIT NO.	AREA (SQ. FT.)
1	45,440	8	43,560
2	45,440	9	50,797
3	43,560	10	48,965
4	43,560	11	47,782
5	43,978	12	43,560
6	43,560	13	57,347
7	43,560		



TYPICAL UNIT SECTION
NO SCALE



TYPICAL UNIT
PLAN VIEW
NO SCALE



CL OF CHAR-ANN DRIVE (66 FT. WIDE)
(66 FT. WIDE ROAD EASEMENT FOR INGRESS/EGRESS LIBER 743, PG.S 604-605, L.C.R.)
(PRIVATE)

NOTES:

1. KENEMOND DRIVE IS A PRIVATE ROAD.
2. BEARINGS WERE ESTABLISHED FROM THE PLAT OF "EARL LAKE HEIGHTS NO. 1", AS RECORDED IN LIBER 7 OF PLATS, PAGE 8, LIVINGSTON COUNTY RECORDS.

CURVE DATA					
CURVE	RADIUS	CENTRAL ANGLE	ARC LENGTH	CHORD LENGTH	BEARING DIRECTION
1	197.00	31°04'23"	106.84	105.53	N 14°14'48" W
2	263.00	14°37'44"	67.15	66.97	N 19°32'04" W
3	263.00	37°06'48"	170.36	167.40	N 81°13'40" W
4	333.00	27°23'02"	159.15	157.64	N 48°58'45" W
5	267.00	21°44'12"	101.29	100.69	N 46°09'19" W
6	75.00	43°56'44"	57.52	56.12	N 78°59'47" W
7	75.00	267°53'28"	350.67	108.00	N 32°58'35" E
8	75.00	43°56'44"	57.52	56.12	S 35°03'03" E
9	333.00	21°44'11"	126.33	125.58	S 46°09'19" E
10	267.00	27°23'02"	127.61	126.40	S 48°58'45" E
11	197.00	37°06'48"	127.61	125.39	S 81°13'40" E

LEGEND

- 10 UNIT NUMBER
- CONCRETE MONUMENT 4" DIAMETER 36" LONG ENCASING 1/2" IRON ROD
- (R) RADIAL LOT LINE
- (25) CURVE NUMBER DESIGNATION

BOSS ENGINEERING
ENGINEERS • SURVEYORS • PLANNERS
LANDSCAPE ARCHITECTS

HOWELL OFFICE: HOWELL, M. 48843
3121 E. GRAND RIVER AVE.
GRAND RIVER, MI 48832
(517)646-4836 FAX (517)646-1670 (800)248-6735
E-MAIL: Bossengr.com

WEST BLOOMFIELD OFFICE:
WEST BLOOMFIELD RD. SUIT 100
7125 ORCHARD LAKE RD. SUIT 100
WEST BLOOMFIELD, MI 48322
(248)626-8055 FAX (248)626-8055

CLIENT: **NORM DYMOND**

PROJECT: **HIDDEN RIDGE**

TITLE: **UNIT AREAS & PERIMETER PLAN**

NO	REVISION	DATE



DESIGNED BY: P.J.F.
DRAWN BY: WHN
CHECKED BY:
SCALE: 1" = 100'
JOB NO. 01044
DATE 8-03-01
PLOTTING INFORMATION
SHEET NO. **5**