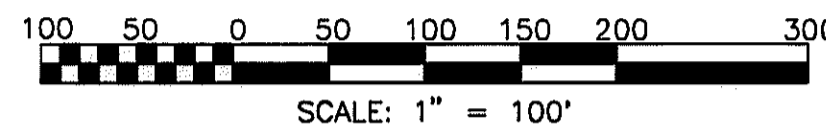
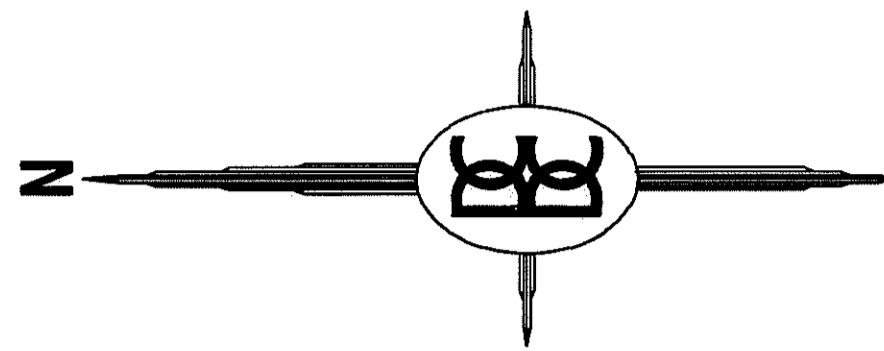
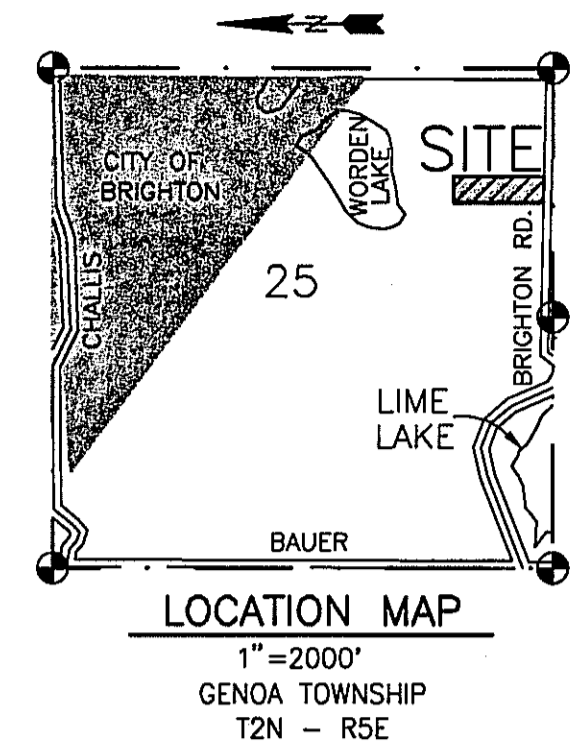


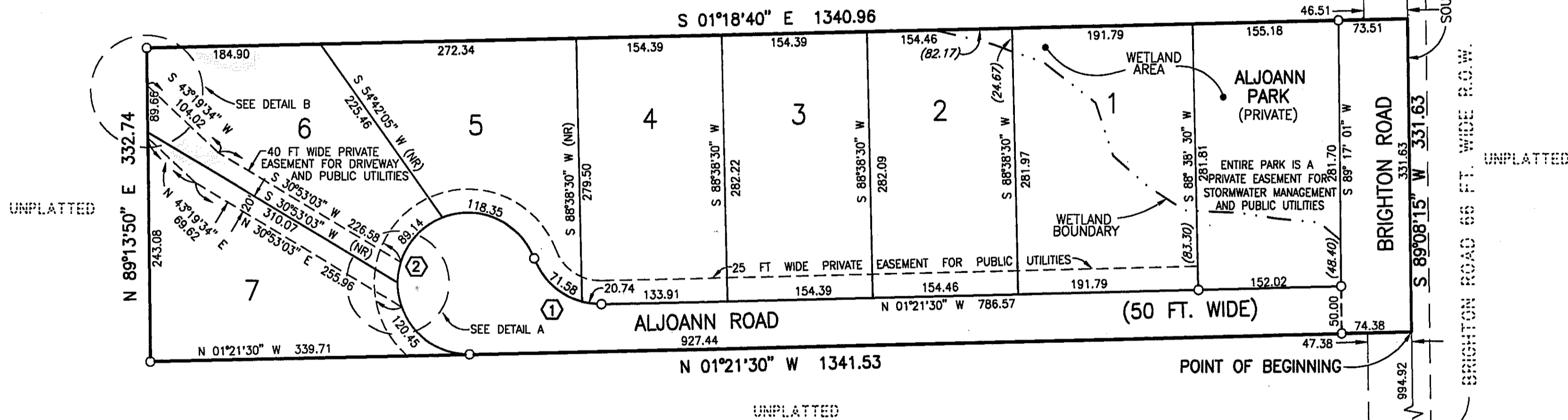
# WORDEN LAKE WOODS

A PART OF THE SE 1/4 OF SECTION 25, T2N-R5E,  
GENOA TOWNSHIP, LIVINGSTON COUNTY, MICHIGAN

THIS PLAT IS SUBJECT TO RESTRICTIONS REQUIRED BY ACT 288 OF 1967, AS AMENDED ON CERTAIN LOTS WITH RESPECT TO THE REQUIREMENTS OF THE MICHIGAN DEPARTMENT OF ENVIRONMENTAL QUALITY/LIVINGSTON COUNTY HEALTH DEPARTMENT WHICH IS RECORDED IN LIBER 2732, PAGES 888-907 OF RECORDS OF THIS COUNTY.



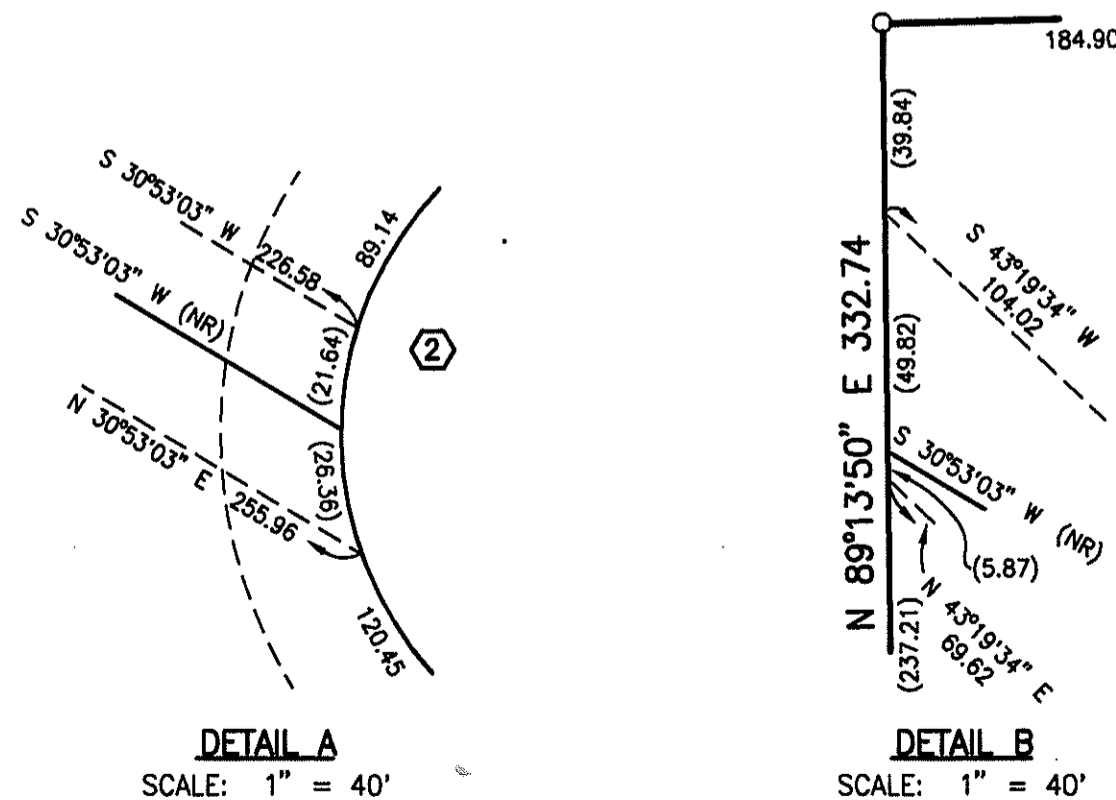
UNPLATTED



USE OF THE WORD "PRIVATE" DOES NOT LIMIT IN ANY WAY THE SCOPE OF THE EASEMENT GRANTED TO THE LIVINGSTON COUNTY DRAIN COMMISSIONER.

LEGEND:

- ALL DIMENSIONS ARE SHOWN IN FEET.
- ALL CURVILINEAR DIMENSIONS ARE SHOWN ALONG THE ARC.
- THE SYMBOL "O" INDICATES A CONCRETE MONUMENT, WHICH IS 4" IN DIAMETER X 36" LONG, ENCASING A 1/2" IRON ROD.
- THE SYMBOL (R) DENOTES A RADIAL LOT LINE.
- THE SYMBOL (NR) DENOTES A NON-RADIAL LOT LINE.
- ALL LOT MARKERS ARE 1/2 INCH IRON RODS AND ARE 18 INCHES IN LENGTH. (NOT CAPPED)
- BEARINGS WERE ESTABLISHED FROM THE RECORDED PLAT OF "MT. BRIGHTON SUBDIVISION No. 2," A SUBDIVISION AS RECORDED IN LIBER 13 OF PLATS, PAGES 12-13, LIVINGSTON COUNTY RECORDS.
- THE SYMBOL (23) DENOTES DISTANCE FROM PROPERTY TO WETLAND BOUNDARY.
- THE SYMBOL (23) DENOTES DISTANCE FROM PROPERTY/BOUNDARY TO EASEMENT LINE.
- ALL DRAINAGE STRUCTURES, CHANNELS AND DETENTION AREAS ARE UNDER THE JURISDICTION OF THE LIVINGSTON COUNTY DRAIN COMMISSIONER AND THE WORDEN LAKE WOODS DRAIN DRAINAGE DISTRICT.



CURVE DATA					
NUMBER	DELTA	LENGTH	RADIUS	CHORD	BEARING
1	70°31'44"	92.32	75.00	86.60	S 56°05'38" E
2	250°31'44"	327.94	75.00	122.47	S 33°54'22" W

CERTIFIED TRUE COPY OF RECORDED PLAT BY DEPARTMENT OF CONSUMER AND INDUSTRY SERVICES  
BY *Maynard R. Dyer*  
MAYNARD R. DYER, P.S., MANAGER  
SUBDIVISION CONTROL AND SURVEY & REMONUMENTATION SECTION

DATE 4-6-00

PREPARED AND DRAFTED BY:  
BOSS ENGINEERING COMPANY  
3121 EAST GRAND RIVER  
HOWELL, MICHIGAN 48843

*Gary R. Boss*  
GARY R. BOSS

