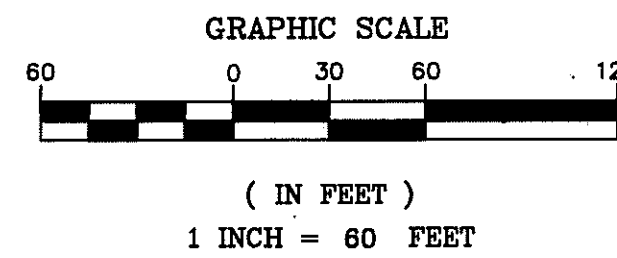
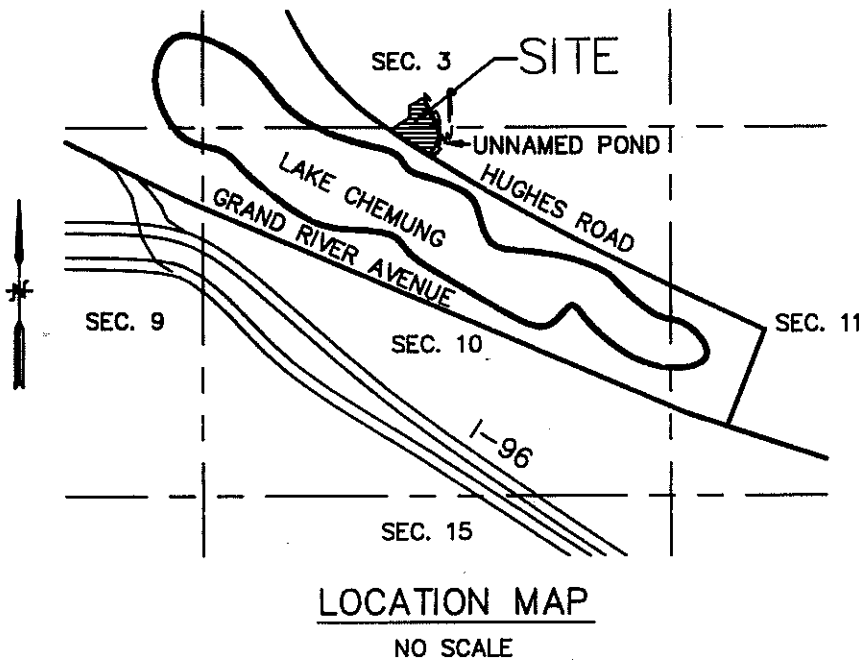


WILLOW CREEK

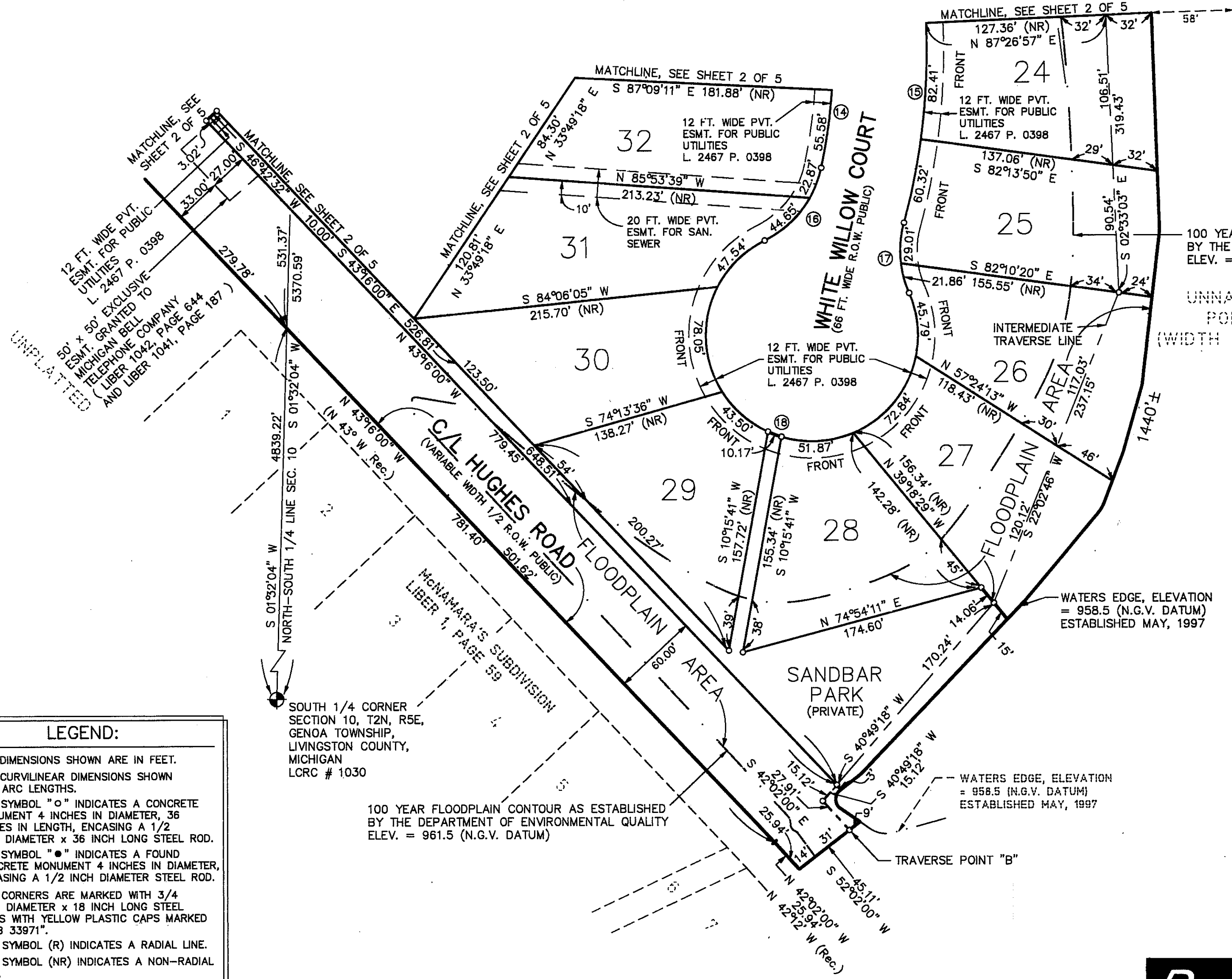
A Subdivision of Part of the SW 1/4 & SE 1/4 of Section 3 and a Part of the NW 1/4 & NE 1/4 of Section 10, Town 2 North, Range 5 East, Genoa Township, Livingston County, Michigan



CERTIFIED TRUE COPY OF
RECORDED PLAT
BY DEPARTMENT OF CONSUMER
AND INDUSTRY SERVICES

BY Maynard R. Dyer, P.S.
MAYNARD R. DYER, P.S.
MANAGER
SUBDIVISION CONTROL SECTION

DATE 8-6-99



100 YEAR FLOODPLAIN CONTOUR AS ESTABLISHED BY THE DEPARTMENT OF ENVIRONMENTAL QUALITY ELEV. = 961.5 (N.G.V. DATUM)

UNNAMED POND (WIDTH VARIES)

WATERS EDGE, ELEVATION = 958.5 (N.G.V. DATUM) ESTABLISHED MAY, 1997

CURVE TABLE					
CURVE	RADIUS	LENGTH	CHORD	BEARING	DELTA
14	392.00'	278.60'	272.77'	N 08°14'08" W	40°43'13"
15	458.00'	351.44'	342.88'	N 06°36'48" W	43°57'54"
16	75.00'	67.52'	65.26'	N 37°54'57" E	51°34'57"
17	75.00'	50.87'	49.90'	S 04°03'44" E	38°51'46"
18	75.00'	349.76'	108.63'	S 69°53'36" E	267°12'02"

WATERS EDGE, ELEVATION = 958.5 (N.G.V. DATUM) ESTABLISHED MAY, 1997

THIS PLAT IS SUBJECT TO RESTRICTIONS AS REQUIRED BY ACT 288 OF 1967, AS AMENDED ON CERTAIN LOTS WITH RESPECT TO THE REQUIREMENTS OF THE MICHIGAN DEPARTMENT OF ENVIRONMENTAL QUALITY, WHICH ARE RECORDED IN LIBER 2621, PAGE(S) 893-902 OF RECORDS OF THIS COUNTY.

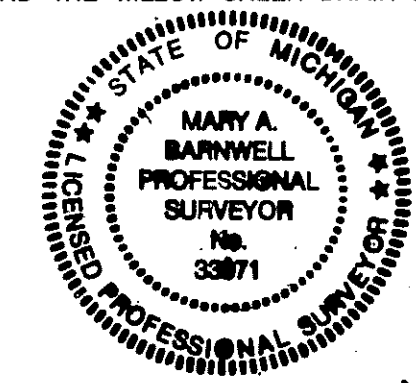
ALL DRAIN EASEMENTS ARE UNDER THE JURISDICTION OF THE LIVINGSTON COUNTY DRAIN COMMISSIONER AND THE WILLOW CREEK DRAIN DRAINAGE DISTRICT.

- LEGEND:**
- 1) ALL DIMENSIONS SHOWN ARE IN FEET.
 - 2) ALL CURVILINEAR DIMENSIONS SHOWN ARE ARC LENGTHS.
 - 3) THE SYMBOL "o" INDICATES A CONCRETE MONUMENT 4 INCHES IN DIAMETER, 36 INCHES IN LENGTH, ENCASING A 1/2 INCH DIAMETER x 36 INCH LONG STEEL ROD.
 - 4) THE SYMBOL "•" INDICATES A FOUND CONCRETE MONUMENT 4 INCHES IN DIAMETER, ENCASING A 1/2 INCH DIAMETER STEEL ROD.
 - 5) LOT CORNERS ARE MARKED WITH 3/4 INCH DIAMETER x 18 INCH LONG STEEL PIPES WITH YELLOW PLASTIC CAPS MARKED "MAB 33971".
 - 6) THE SYMBOL (R) INDICATES A RADIAL LINE.
 - 7) THE SYMBOL (NR) INDICATES A NON-RADIAL LINE.
 - 8) BEARINGS WERE ESTABLISHED FROM "RED OAKS OF CHEMUNG No.8", A SUBDIVISION RECORDED IN LIBER 20 OF PLATS, PAGES 46 THROUGH 48, INCLUSIVE, LIVINGSTON COUNTY RECORDS.

SOUTH 1/4 CORNER SECTION 10, T2N, R5E, GENOA TOWNSHIP, LIVINGSTON COUNTY, MICHIGAN LORC # 1030

100 YEAR FLOODPLAIN CONTOUR AS ESTABLISHED BY THE DEPARTMENT OF ENVIRONMENTAL QUALITY ELEV. = 961.5 (N.G.V. DATUM)

WATERS EDGE, ELEVATION = 958.5 (N.G.V. DATUM) ESTABLISHED MAY, 1997

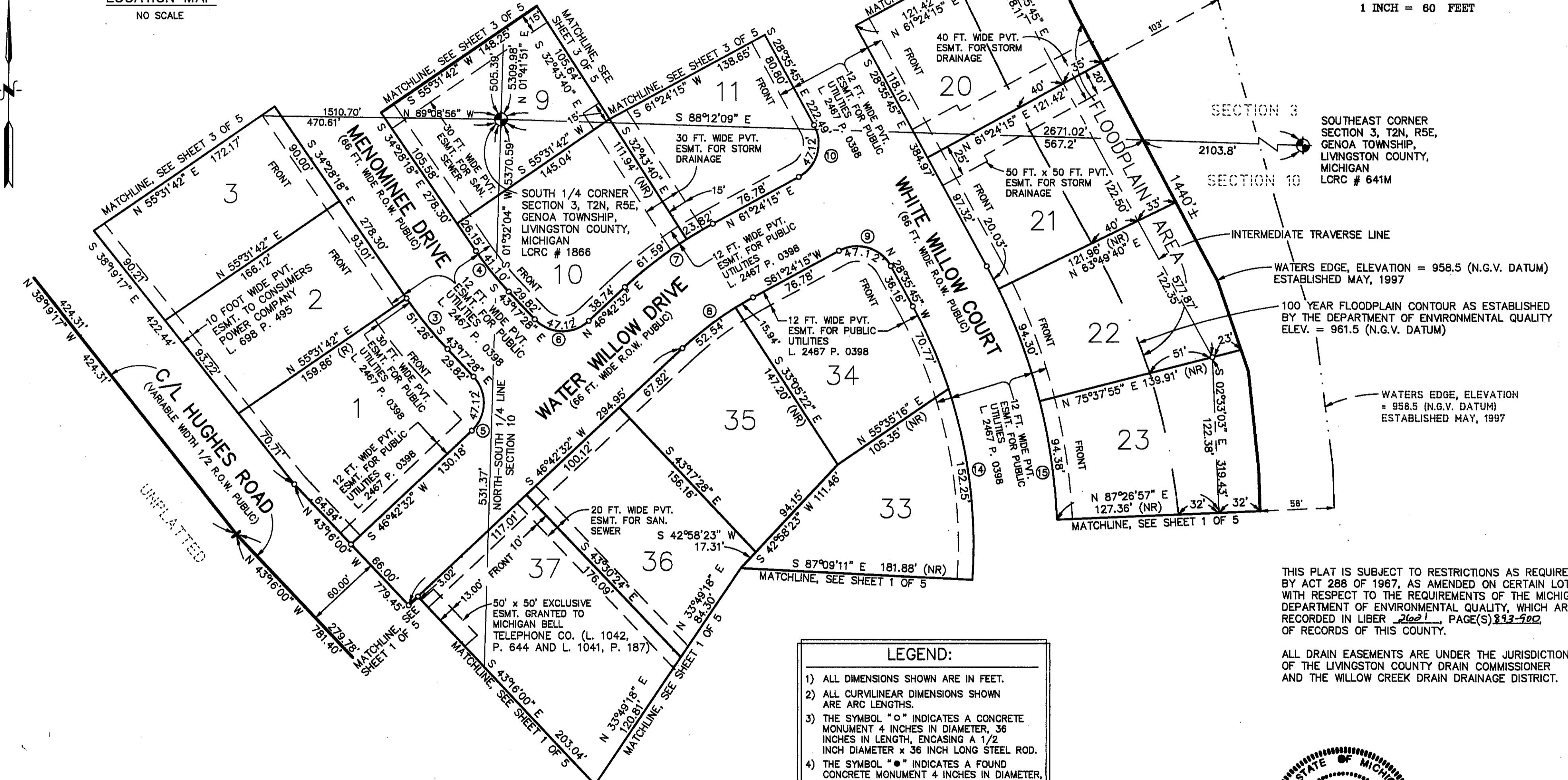
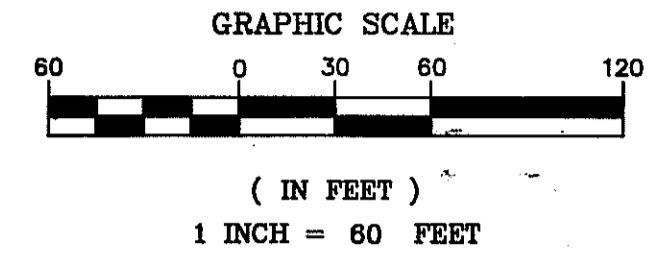
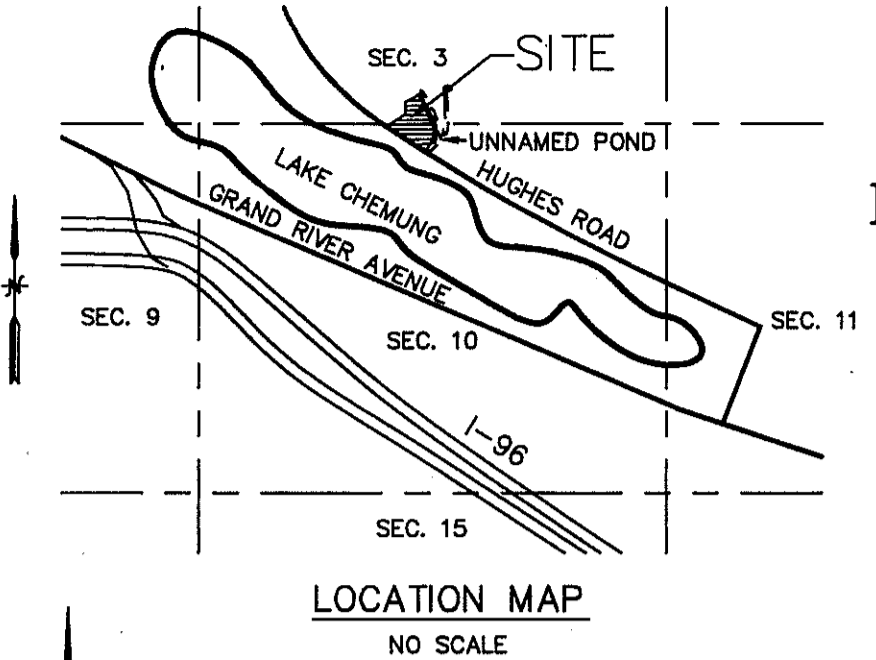


DESINE INC
ENGINEERS
7011 GRAND RIVER AVE.
BRIGHTON, MICHIGAN 48114
(810) 227-9533

Mary A. Barnwell
MARY A. BARNWELL
PROFESSIONAL SURVEYOR
SURVEYOR NO. 33971

WILLOW CREEK

A Subdivision of Part of the SW 1/4 & SE 1/4 of Section 3 and a Part of the NW 1/4 & NE 1/4 of Section 10, Town 2 North, Range 5 East, Genoa Township, Livingston County, Michigan



SOUTHEAST CORNER SECTION 3, T2N, R5E, GENOA TOWNSHIP, LIVINGSTON COUNTY, MICHIGAN LCRC # 641M

INTERMEDIATE TRAVERSE LINE

WATERS EDGE, ELEVATION = 958.5 (N.G.V. DATUM) ESTABLISHED MAY, 1997

100 YEAR FLOODPLAIN CONTOUR AS ESTABLISHED BY THE DEPARTMENT OF ENVIRONMENTAL QUALITY ELEV. = 961.5 (N.G.V. DATUM)

WATERS EDGE, ELEVATION = 958.5 (N.G.V. DATUM) ESTABLISHED MAY, 1997

THIS PLAT IS SUBJECT TO RESTRICTIONS AS REQUIRED BY ACT 288 OF 1967, AS AMENDED ON CERTAIN LOTS WITH RESPECT TO THE REQUIREMENTS OF THE MICHIGAN DEPARTMENT OF ENVIRONMENTAL QUALITY, WHICH ARE RECORDED IN LIBER 2621, PAGE(S) 313-502, OF RECORDS OF THIS COUNTY.

ALL DRAIN EASEMENTS ARE UNDER THE JURISDICTION OF THE LIVINGSTON COUNTY DRAIN COMMISSIONER AND THE WILLOW CREEK DRAIN DRAINAGE DISTRICT.

- LEGEND:**
- 1) ALL DIMENSIONS SHOWN ARE IN FEET.
 - 2) ALL CURVILINEAR DIMENSIONS SHOWN ARE ARC LENGTHS.
 - 3) THE SYMBOL "o" INDICATES A CONCRETE MONUMENT 4 INCHES IN DIAMETER, 36 INCHES IN LENGTH, ENCASING A 1/2 INCH DIAMETER x 36 INCH LONG STEEL ROD.
 - 4) THE SYMBOL "•" INDICATES A FOUND CONCRETE MONUMENT 4 INCHES IN DIAMETER, ENCASING A 1/2 INCH DIAMETER STEEL ROD.
 - 5) LOT CORNERS ARE MARKED WITH 3/4 INCH DIAMETER x 18 INCH LONG STEEL PIPES WITH YELLOW PLASTIC CAPS MARKED "MAB 33971".
 - 6) THE SYMBOL (R) INDICATES A RADIAL LINE.
 - 7) THE SYMBOL (NR) INDICATES A NON-RADIAL LINE.
 - 8) BEARINGS WERE ESTABLISHED FROM "RED OAKS OF CHEMUNG No.8", A SUBDIVISION RECORDED IN LIBER 20 OF PLATS, PAGES 46 THROUGH 48, INCLUSIVE, LIVINGSTON COUNTY RECORDS.

CURVE TABLE

CURVE	RADIUS	LENGTH	CHORD	BEARING	DELTA
3	333.00'	51.26'	51.21'	S 38°52'53" E	08°49'10"
4	267.00'	41.10'	41.06'	S 38°52'53" E	08°49'10"
5	30.00'	47.12'	42.43'	N 01°42'32" E	90°00'00"
6	30.00'	47.12'	42.43'	S 88°17'28" E	90°00'00"
7	333.00'	85.41'	85.17'	S 54°03'24" W	14°41'43"
8	267.00'	68.48'	68.29'	S 54°03'24" W	14°41'43"
9	30.00'	47.12'	42.43'	N 73°35'45" W	90°00'00"
10	30.00'	47.12'	42.43'	N 16°24'15" E	90°00'00"
14	392.00'	278.60'	272.77'	N 08°14'08" W	40°43'13"
15	458.00'	351.44'	342.88'	N 06°36'48" W	43°57'54"

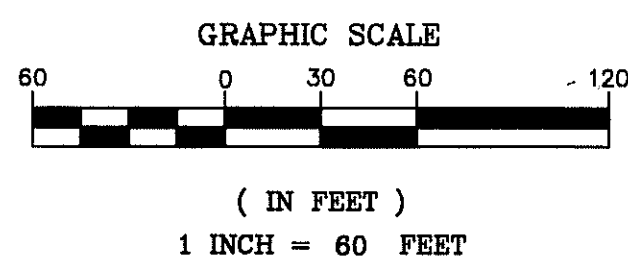
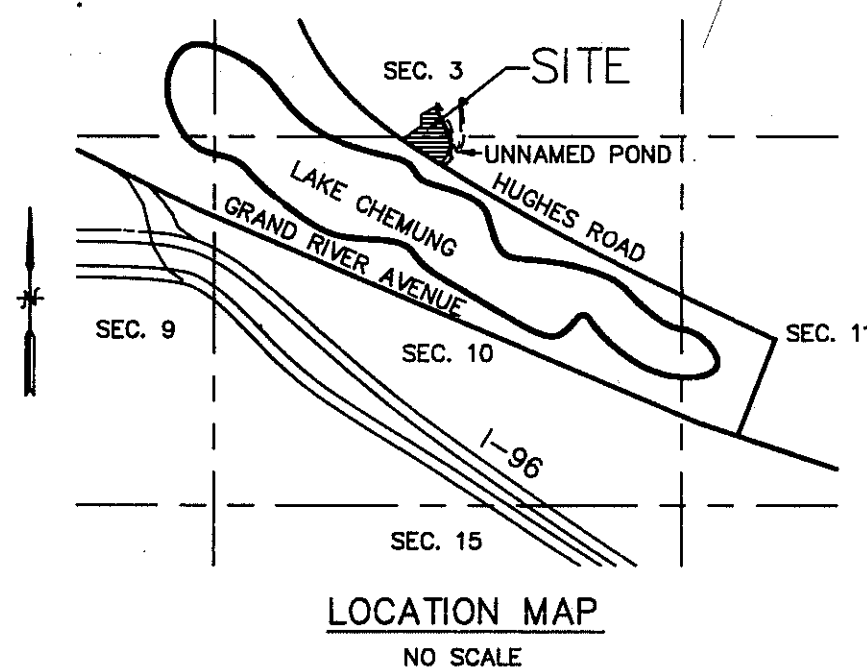


DESINE INC ENGINEERS
7011 GRAND RIVER AVE.
BRIGHTON, MICHIGAN 48114
(810) 227-9533

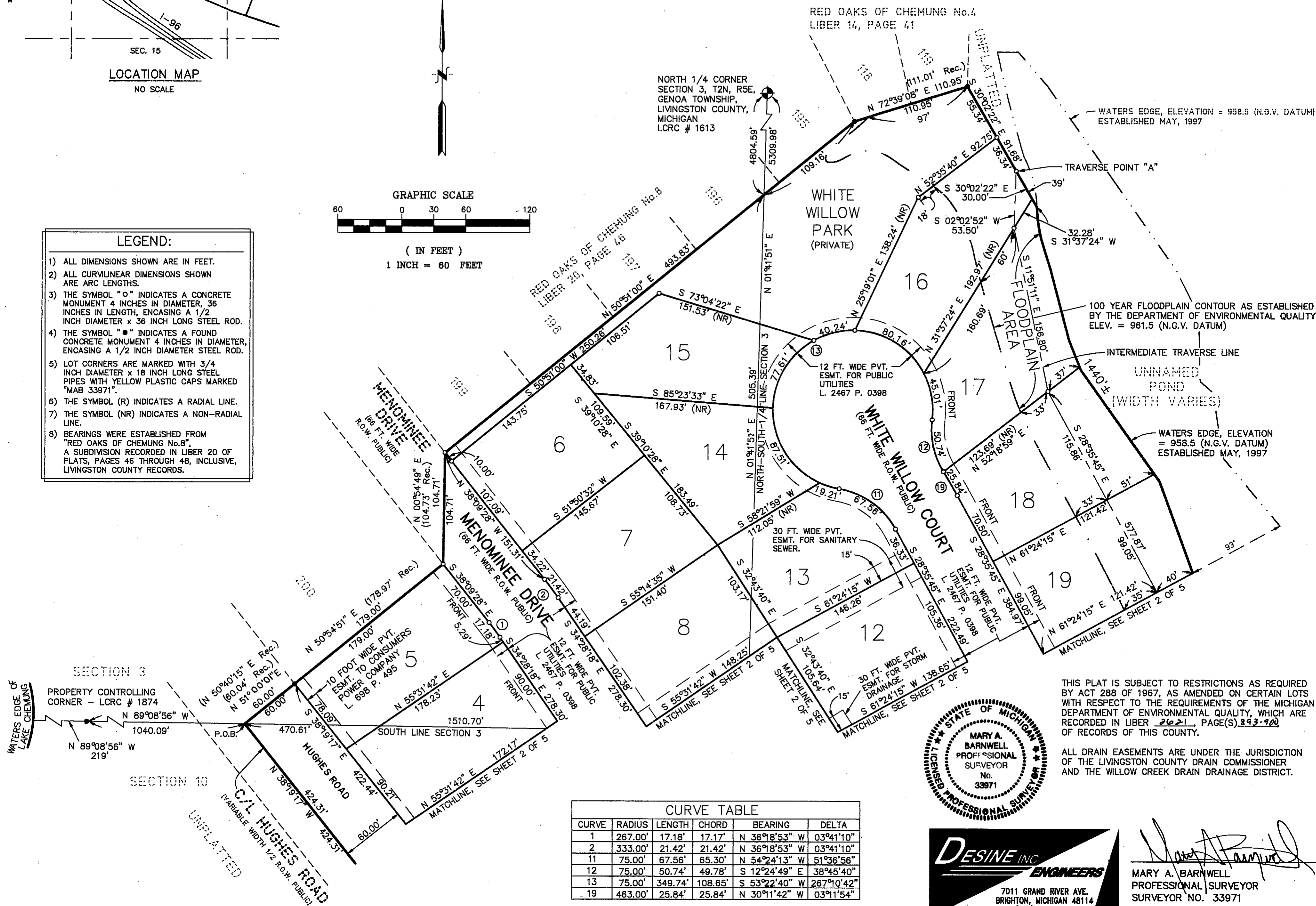
MARY A. BARNWELL
PROFESSIONAL SURVEYOR
SURVEYOR NO. 33971

WILLOW CREEK

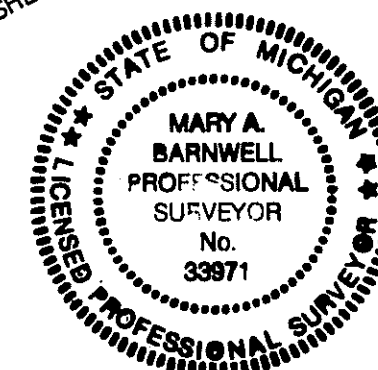
A Subdivision of Part of the SW 1/4 & SE 1/4 of Section 3 and a Part of the NW 1/4 & NE 1/4 of Section 10, Town 2 North, Range 5 East, Genoa Township, Livingston County, Michigan



- LEGEND:**
- 1) ALL DIMENSIONS SHOWN ARE IN FEET.
 - 2) ALL CURVILINEAR DIMENSIONS SHOWN ARE ARC LENGTHS.
 - 3) THE SYMBOL "o" INDICATES A CONCRETE MONUMENT 4 INCHES IN DIAMETER, 36 INCHES IN LENGTH, ENCASING A 1/2 INCH DIAMETER x 36 INCH LONG STEEL ROD.
 - 4) THE SYMBOL "•" INDICATES A FOUND CONCRETE MONUMENT 4 INCHES IN DIAMETER, ENCASING A 1/2 INCH DIAMETER STEEL ROD.
 - 5) LOT CORNERS ARE MARKED WITH 3/4 INCH DIAMETER x 18 INCH LONG STEEL PIPES WITH YELLOW PLASTIC CAPS MARKED "MAB 33971".
 - 6) THE SYMBOL (R) INDICATES A RADIAL LINE.
 - 7) THE SYMBOL (NR) INDICATES A NON-RADIAL LINE.
 - 8) BEARINGS WERE ESTABLISHED FROM "RED OAKS OF CHEMUNG No. 8", A SUBDIVISION RECORDED IN LIBER 20 OF PLATS, PAGES 46 THROUGH 48, INCLUSIVE, LIVINGSTON COUNTY RECORDS.



CURVE	RADIUS	LENGTH	CHORD	BEARING	DELTA
1	267.00'	17.18'	17.17'	N 36°18'53" W	03°41'10"
2	333.00'	21.42'	21.42'	N 36°18'53" W	03°41'10"
11	75.00'	67.56'	65.30'	N 54°24'13" W	51°36'56"
12	75.00'	50.74'	49.78'	S 12°24'49" E	38°45'40"
13	75.00'	349.74'	108.65'	S 53°22'40" W	267°10'42"
19	463.00'	25.84'	25.84'	N 30°11'42" W	03°11'54"



DESINE INC ENGINEERS
7011 GRAND RIVER AVE.
BRIGHTON, MICHIGAN 48114
(810) 227-9533

Mary A. Barnwell
MARY A. BARNWELL
PROFESSIONAL SURVEYOR
SURVEYOR NO. 33971

THIS PLAT IS SUBJECT TO RESTRICTIONS AS REQUIRED BY ACT 288 OF 1967, AS AMENDED ON CERTAIN LOTS WITH RESPECT TO THE REQUIREMENTS OF THE MICHIGAN DEPARTMENT OF ENVIRONMENTAL QUALITY, WHICH ARE RECORDED IN LIBER 2021, PAGE(S) 893-900 OF RECORDS OF THIS COUNTY.

ALL DRAIN EASEMENTS ARE UNDER THE JURISDICTION OF THE LIVINGSTON COUNTY DRAIN COMMISSIONER AND THE WILLOW CREEK DRAIN DRAINAGE DISTRICT.