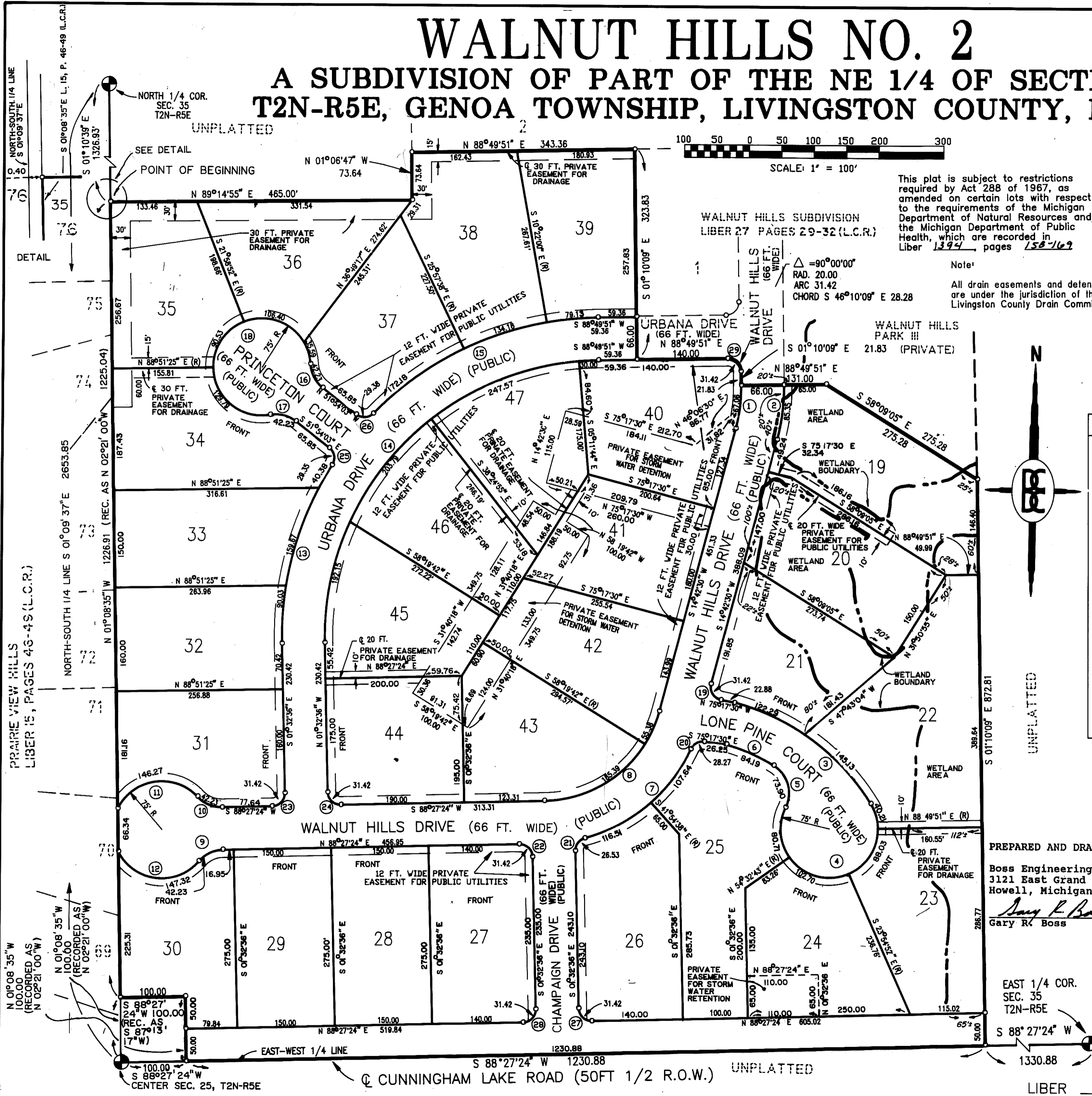


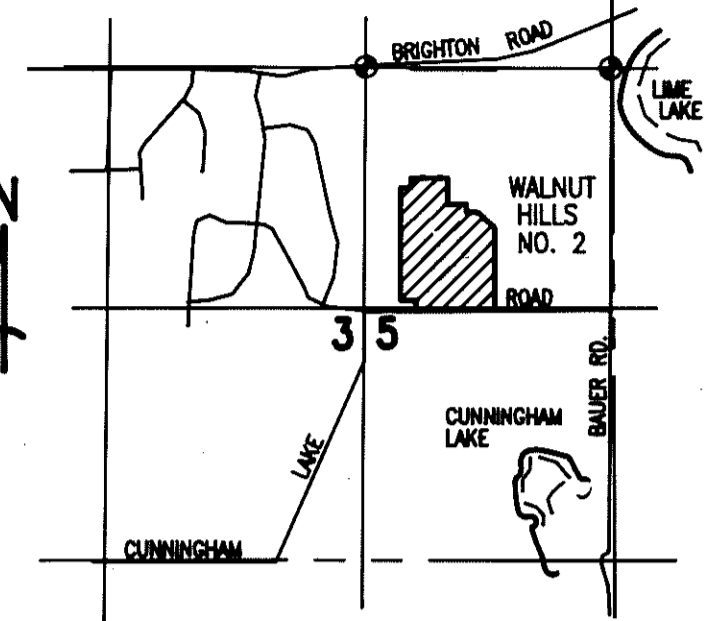
# WALNUT HILLS NO. 2

## A SUBDIVISION OF PART OF THE NE 1/4 OF SECTION 35, T2N-R5E, GENOA TOWNSHIP, LIVINGSTON COUNTY, MICHIGAN



This plat is subject to restrictions required by Act 288 of 1967, as amended on certain lots with respect to the requirements of the Michigan Department of Natural Resources and/or the Michigan Department of Public Health, which are recorded in Liber 1394 pages 58-169

Note:  
All drain easements and detention areas are under the jurisdiction of the Livingston County Drain Commission.



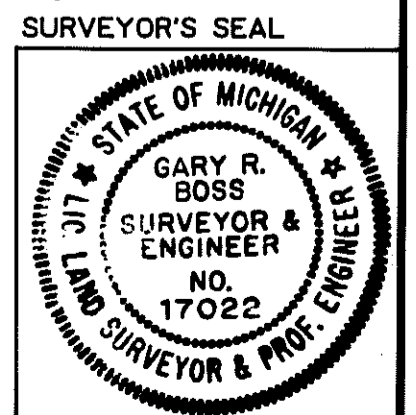
LOCATION MAP  
SCALE: 1" = 200'

CURVE DATA

NO.	RADIUS	DELTA	ARC	CHORD	BEARINGS
1	242.00	15°52'39"	67.06	66.85	S 06°46'10" W
2	308.00	15°52'39"	85.35	85.08	S 06°46'10" W
3	353.00	43°24'17"	267.42	261.07	S 53°35'21" E
4	75.00	238°05'12"	311.66	131.14	S 87°09'23" W
5	50.00	84°41'00"	73.90	67.36	N 16°08'30" W
6	287.00	16°48'29"	84.19	83.89	N 66°53'15" W
7	253.00	50°45'08"	224.15	216.90	S 49°05'35" W
8	187.06	73°44'54"	240.77	224.49	N 51°34'56" E
9	50.00	48°23'40"	42.23	40.99	S 64°15'34" W
10	50.00	48°23'40"	42.23	40.99	S 67°20'46" E
11	75.00	111°44'35"	146.27	124.17	N 80°58'46" E
12	75.00	112°32'42"	147.32	124.75	N 83°39'55" W
13	493.00	33°42'45"	290.08	285.91	N 15°18'46" E
14	427.00	90°22'27"	673.51	605.84	N 43°38'37" E
15	493.00	44°48'05"	385.49	375.75	N 66°25'48" E
16	50.00	48°23'40"	42.23	40.99	S 27°42'13" E
17	50.00	48°23'40"	42.23	40.99	N 76°05'52" W
18	75.00	276°47'19"	362.31	99.60	N 38°05'57" E
19	20.00	90°00'00"	31.42	28.28	S 30°17'30" E
20	20.00	80°59'29"	28.27	25.98	S 64°12'45" E
21	20.00	76°00'46"	26.53	24.63	N 36°27'46" E
22	20.00	90°00'00"	31.42	28.28	S 46°32'36" E
23	20.00	90°00'00"	31.42	28.28	N 43°27'24" E
24	20.00	90°00'00"	31.42	28.28	N 46°32'36" W
25	20.00	84°04'12"	29.35	26.78	N 09°51'57" W
26	20.00	84°09'54"	29.38	26.81	N 86°01'00" E
27	20.00	90°00'00"	31.42	28.28	S 46°32'36" E
28	20.00	90°00'00"	31.42	28.28	N 43°27'24" E
29	20.00	90°00'00"	31.42	28.28	S 46°10'09" E

LEGEND:  
All dimensions are shown in feet.  
All curvilinear dimensions are shown along the arc.  
The symbol "o" indicates a concrete monument, which is 4" in diameter x 36" long, encasing a 1/2" iron rod.  
The symbol (R) denotes a radial lot line.  
All lot markers are 1/2 inch iron rods and are 18 inches in length. (not capped)  
Bearings were established from the recorded Plat of "Rolling Meadows Subdivision No. 2", Liber 25 of Plats, page 23 & 24, Livingston County Records.

PREPARED AND DRAFTED BY:  
Boss Engineering Company  
3121 East Grand River  
Howell, Michigan 48843  
*Gary R. Boss*  
Gary R. Boss



EAST 1/4 COR.  
SEC. 35  
T2N-R5E