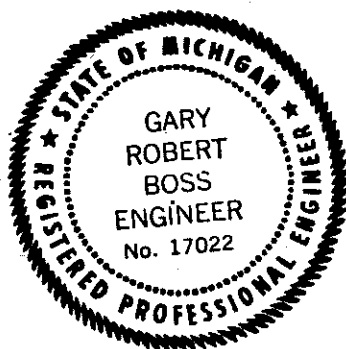
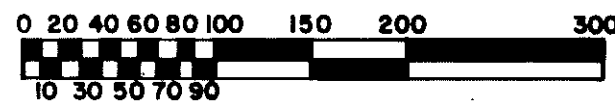


"TIMBERVIEW FARMS NO.2"

PART OF THE NW 1/4 OF SEC. 33, T.2N.-R.5E., GENOA TOWNSHIP, LIVINGSTON COUNTY, MICHIGAN.

SHEET 1
OF
3 SHEETS

Scale: 1 inch = 100'



PREPARED AND DRAFTED BY
BOSS ENGINEERING COMPANY
3121 EAST GRAND RIVER
HOWELL, MICHIGAN 48843

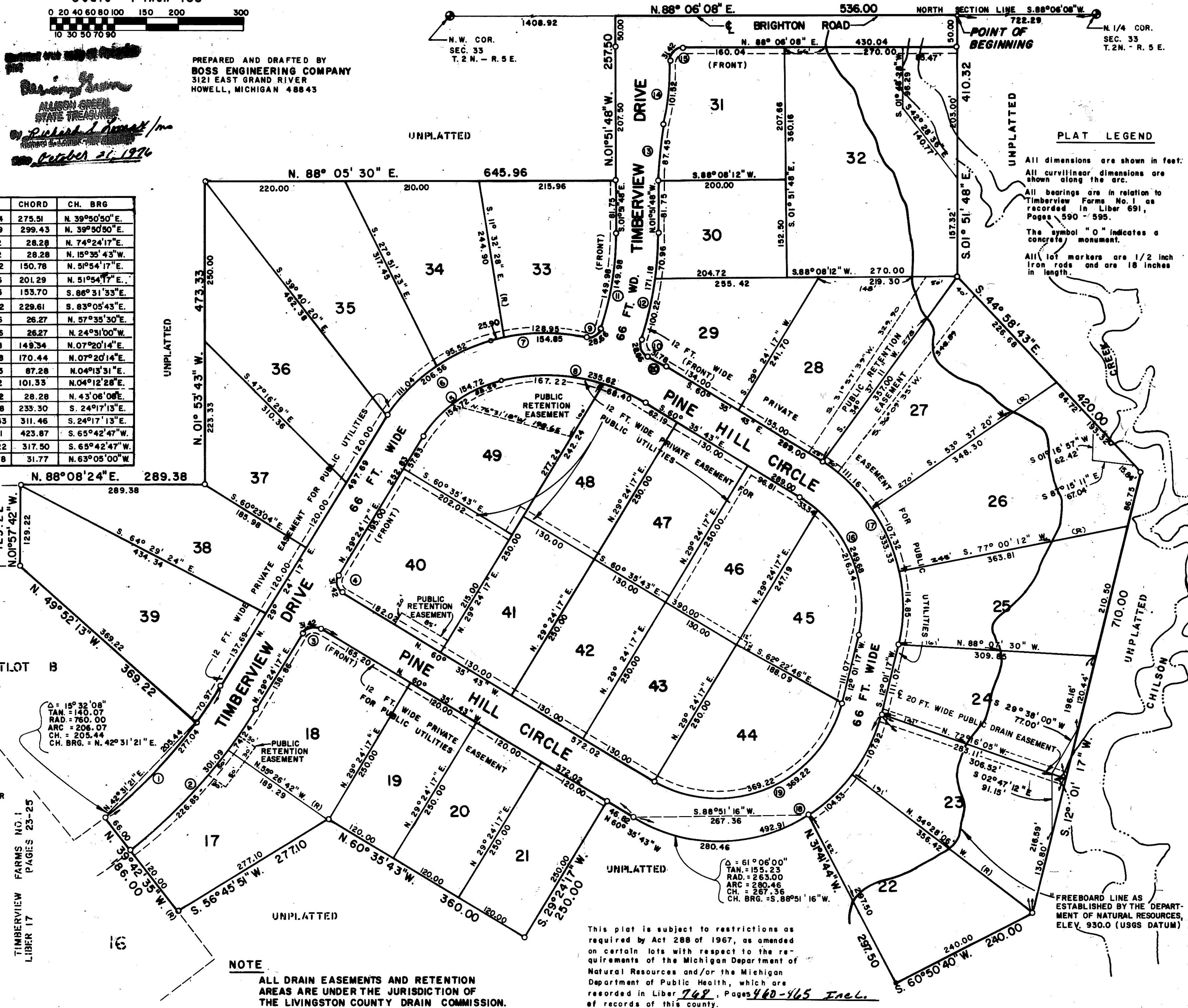
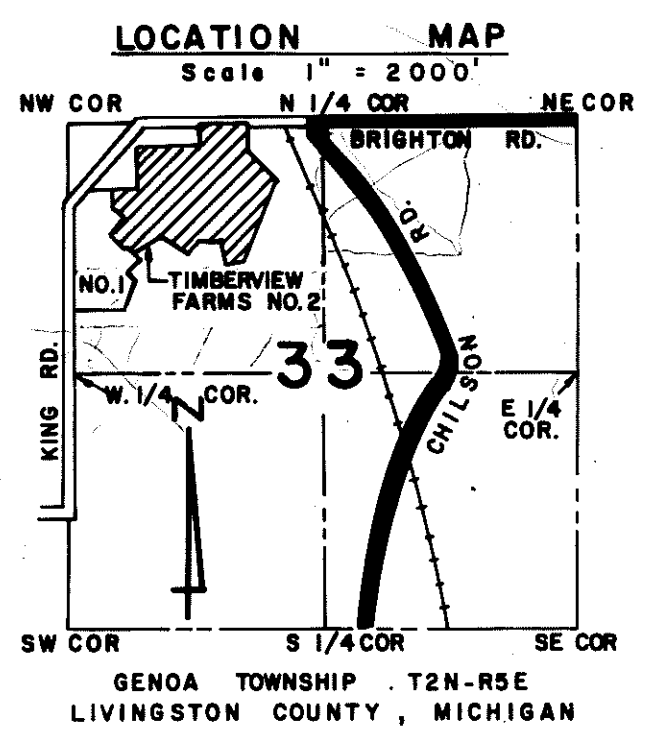
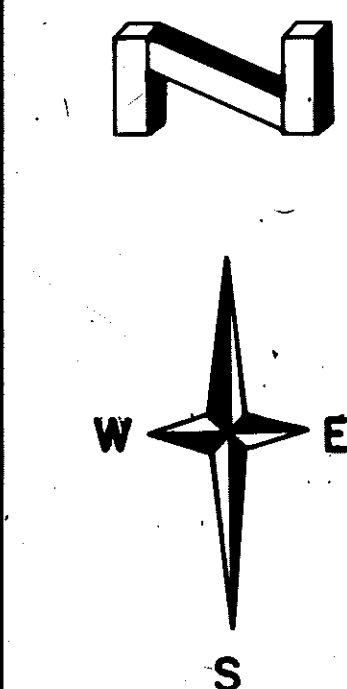
*Published hereinafter in
Michigan State Treasurer's
Office
October 21, 1996*

CURVE DATA

NO.	DELTA	TAN.	RADIUS	ARC	CHORD	CH. BRG
1	20° 53' 08"	140.07	760.00	277.04	275.51	N. 39° 50' 50" E.
2	20° 53' 08"	152.24	826.00	301.09	299.43	N. 39° 50' 50" E.
3	90° 00' 00"	20.00	20.00	31.42	28.28	N. 74° 24' 17" E.
4	90° 00' 00"	20.00	20.00	31.42	28.28	N. 15° 35' 43" W.
5	45° 00' 00"	81.60	197.00	154.72	150.78	N. 51° 54' 17" E.
6	45° 00' 00"	108.94	263.00	206.56	201.29	N. 51° 54' 17" E.
7	24° 14' 31"	78.60	366.00	154.85	153.70	S. 88° 31' 33" E.
8	45° 00' 00"	124.26	300.00	235.62	229.61	S. 83° 05' 43" E.
9	82° 06' 29"	17.42	20.00	28.66	26.27	N. 57° 35' 30" E.
10	82° 06' 29"	17.42	20.00	28.66	26.27	N. 24° 31' 00" W.
11	18° 24' 03"	75.64	467.00	149.98	149.34	N. 07° 20' 14" E.
12	18° 24' 03"	86.33	535.00	171.18	170.44	N. 07° 20' 14" E.
13	12° 10' 38"	43.89	411.45	87.45	87.28	N. 04° 15' 31" E.
14	12° 10' 38"	50.96	476.34	101.52	101.33	N. 04° 12' 28" E.
15	90° 00' 00"	20.00	20.00	31.42	28.28	N. 43° 06' 08" E.
16	72° 37' 00"	144.76	197.00	249.68	235.30	S. 24° 17' 13" E.
17	72° 37' 00"	193.25	263.00	333.33	311.46	S. 24° 17' 13" E.
18	107° 23' 00"	357.92	263.00	492.91	423.87	S. 65° 42' 47" W.
19	107° 23' 00"	268.10	197.00	369.22	317.50	S. 65° 42' 47" W.
20	04° 58' 31"	15.90	366.00	31.78	31.77	N. 63° 05' 00" W.

PLAT LEGEND

All dimensions are shown in feet.
All curvilinear dimensions are shown along the arc.
All bearings are in relation to Timberview Farms No. 1 as recorded in Liber 691, Pages 590-595.
The symbol "O" indicates a concrete monument.
All lot markers are 1/2 inch iron rods and are 18 inches in length.



NOTE
ALL DRAIN EASEMENTS AND RETENTION AREAS ARE UNDER THE JURISDICTION OF THE LIVINGSTON COUNTY DRAIN COMMISSION.

This plat is subject to restrictions as required by Act 288 of 1967, as amended on certain lots with respect to the requirements of the Michigan Department of Natural Resources and/or the Michigan Department of Public Health, which are recorded in Liber 742, Pages 460-465 Incl. of records of this county.

FREEBOARD LINE AS ESTABLISHED BY THE DEPARTMENT OF NATURAL RESOURCES, ELEV. 930.0 (USGS DATUM)