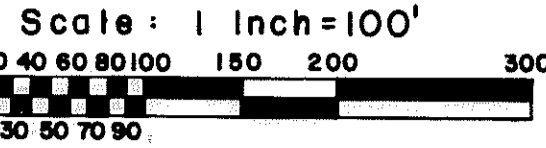


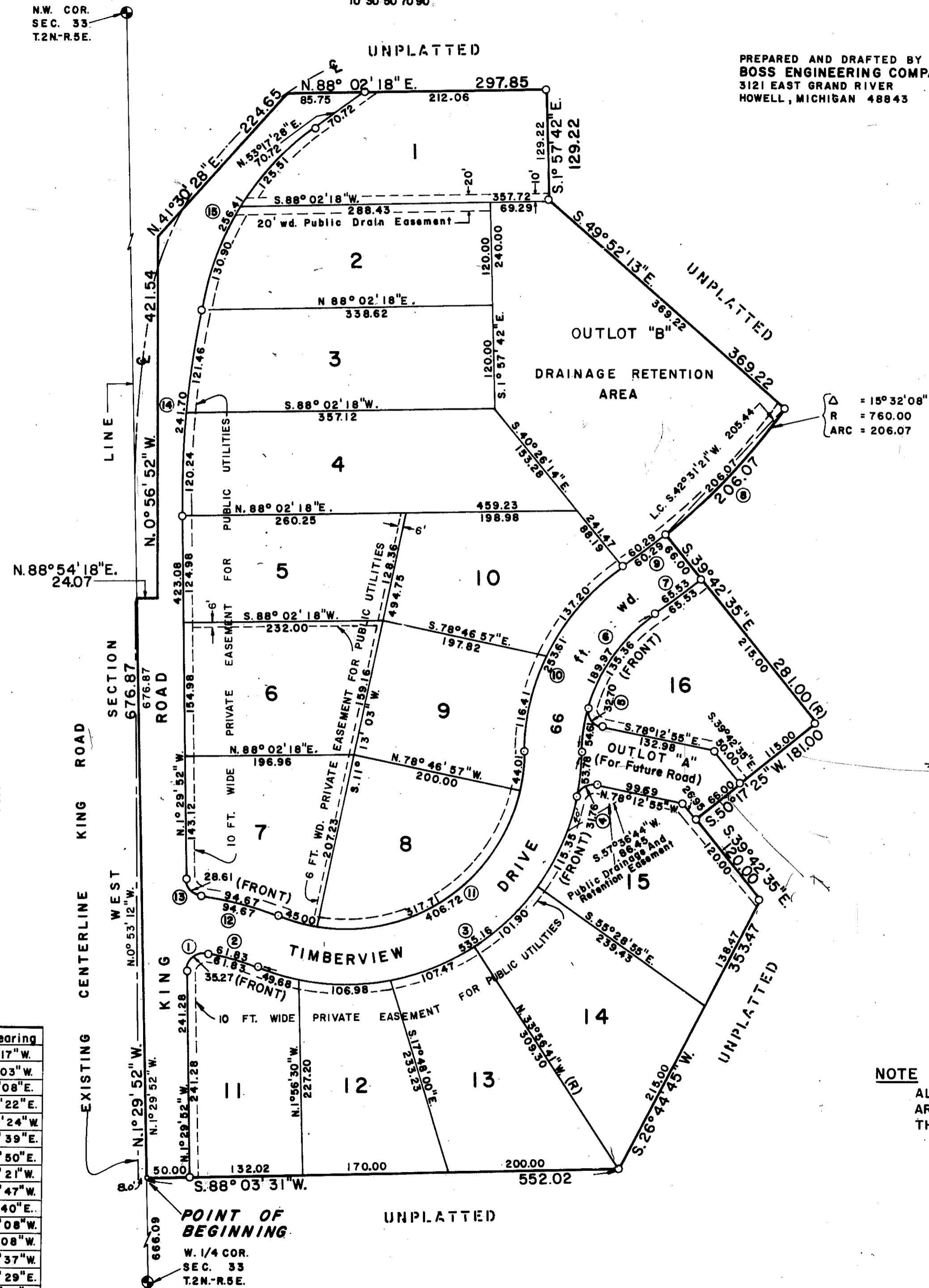
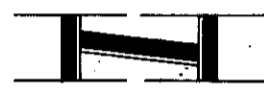
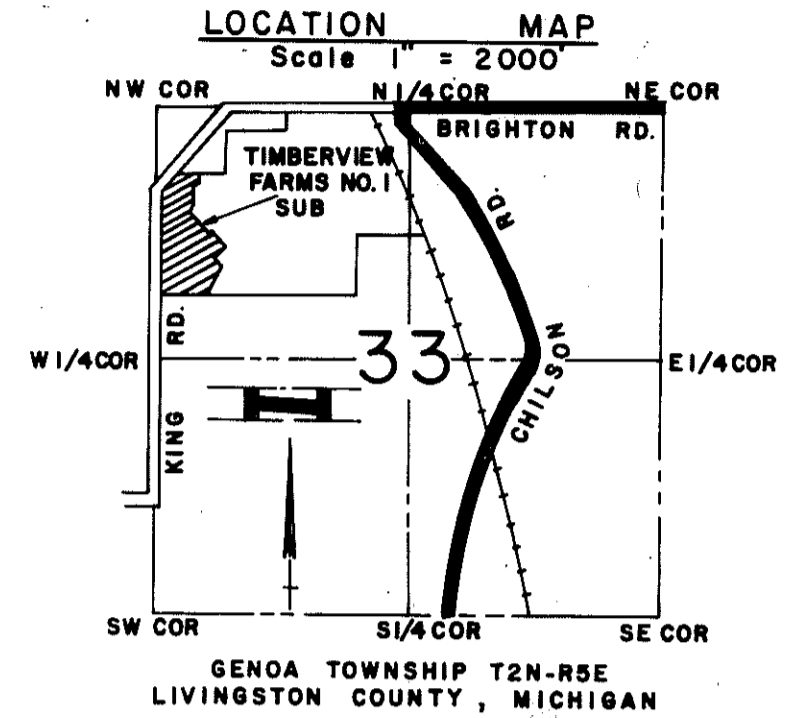
TIMBERVIEW FARMS NO. 1

PART OF THE NW 1/4 OF SEC. 33, T2N-R5E., GENOA TOWNSHIP, LIVINGSTON COUNTY, MICHIGAN.



SHEET 1
OF
3 SHEETS

PREPARED AND DRAFTED BY
BOSS ENGINEERING COMPANY
3121 EAST GRAND RIVER
HOWELL, MICHIGAN 48843



Δ = 15° 32' 08"
R = 760.00
ARC = 206.07

PLAT LEGEND

All dimensions are shown in feet.
All curvilinear dimensions are shown along the arc.
All bearings are based on true North by observation of Polaris - May 2, 1974.
The symbol "o" indicates a concrete monument.
All lot markers are 1/2 inch iron rods and are 18 inches in length.

This plat is subject to restrictions as required by Act 288 of 1967, as amended on certain lots with respect to the requirements of the Michigan Department of Natural Resources and/or the Michigan Department of Public Health, which are recorded in Liber 691, Page 590-595 of records of this county.

Certified true copy of the plat recorded Aug 28 1974 at 8:30 a.m. in Liber 170 of plats on page 23-25 of Dec. by Julia C. Blackburn, Register of Deeds.

ALLISON GREEN
STATE TREASURER
By Richard E. Lomas - Plat Examiner
September 11, 1974

NOTE

ALL DRAIN EASEMENTS AND RETENTION AREAS ARE UNDER THE JURISDICTION OF THE LIVINGSTON COUNTY DRAIN COMMISSION.

CURVE DATA

No.	Central Angle	Tangent	Radius	Arc Length	Chord	Chord Bearing
1	101° 02' 38"	24.28	20.00	35.27	30.87	S.49° 01' 17" W.
2	11° 32' 22"	31.02	307.00	61.83	61.73	N.74° 41' 03" W.
3	111° 30' 00"	403.89	275.00	535.16	454.62	N.55° 20' 08" E.
4	90° 59' 33"	20.35	20.00	31.76	28.53	N.56° 17' 22" E.
5	93° 41' 01"	21.33	20.00	32.70	29.18	N.31° 22' 24" W.
6	55° 15' 00"	103.10	197.00	189.97	182.69	N.27° 12' 39" E.
7	04° 32' 43"	32.78	826.00	65.53	65.51	N.52° 33' 50" E.
8	15° 32' 08"	103.67	760.00	206.07	205.44	S.42° 31' 21" W.
9	04° 32' 43"	30.16	760.00	60.29	60.27	S.52° 33' 47" W.
10	55° 15' 00"	137.64	263.00	253.61	243.90	N.27° 12' 40" E.
11	111° 30' 00"	306.96	209.00	406.72	345.51	S.55° 20' 08" W.
12	14° 32' 30"	47.59	373.00	94.87	94.41	N.76° 11' 08" W.
13	81° 57' 30"	17.37	20.00	28.61	26.23	N.42° 28' 37" W.
14	11° 04' 44"	121.23	1250.00	241.70	241.33	N.04° 02' 29" E.
15	43° 42' 36"	134.81	336.11	256.41	250.24	N.31° 26' 11" E.