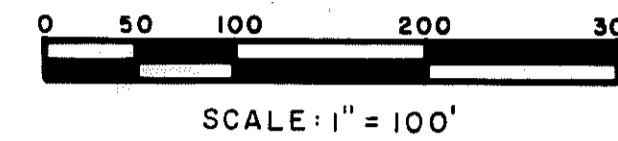


RED OAKS OF CHEMUNG NO. 10

A SUBDIVISION OF PART OF THE S. 1/2 OF SEC. 3
T.2N., R.5E., GENOA TOWNSHIP
LIVINGSTON CO. MICHIGAN

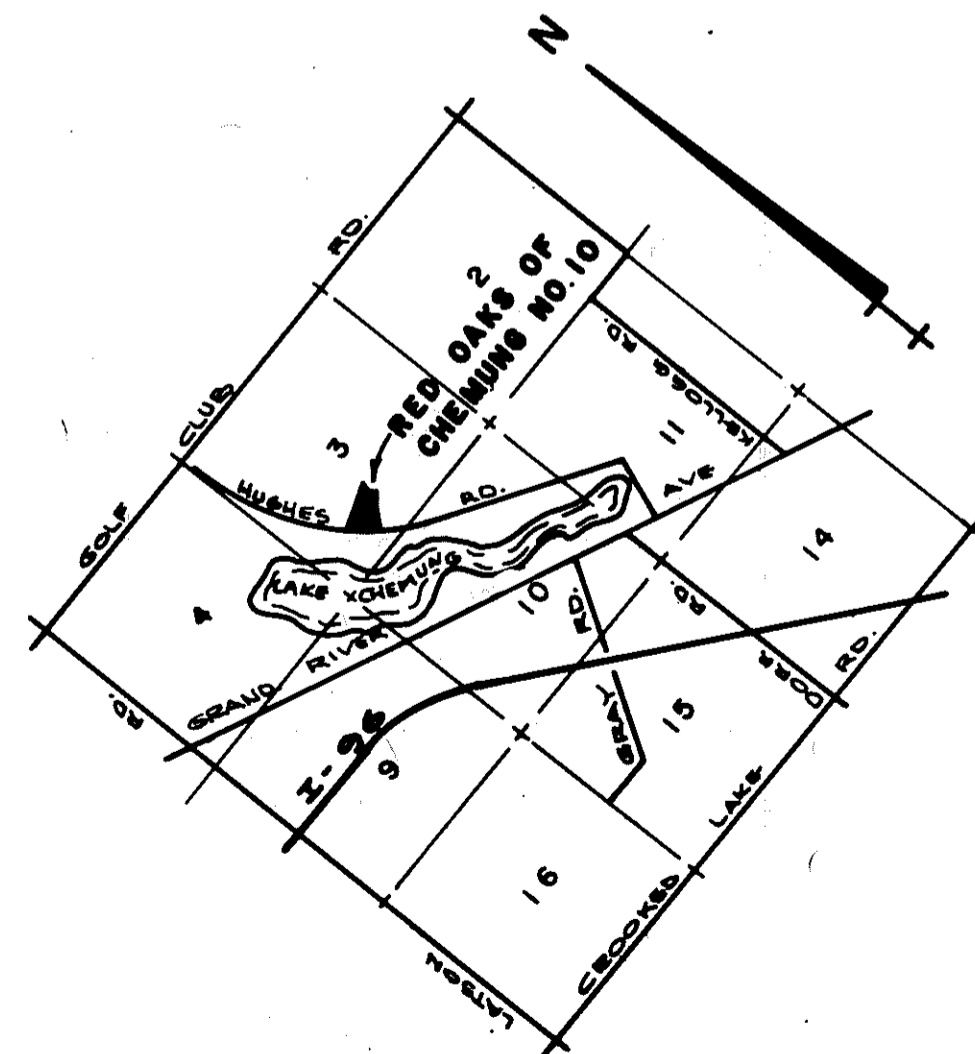


PLAT LEGEND

- ALL DIMENSIONS ARE SHOWN IN FEET.
- ALL CURVILINEAR DIMENSIONS ARE SHOWN ALONG THE ARC.
- RADIAL LINES SHOWN THUS "R"
- THE SYMBOL "O" INDICATES A CONCRETE MONUMENT.
- ALL LOT MARKERS ARE 1/2" IRON PIPES AND ARE 18" LONG.
- ALL BEARINGS ARE RELATED TO THE BEARINGS OF THE SOUTHWESTLY LINE OF RED OAKS OF CHEMUNG NO. 4, LIBER 14, PAGES 41-42, LIVINGSTON COUNTY RECORDS.

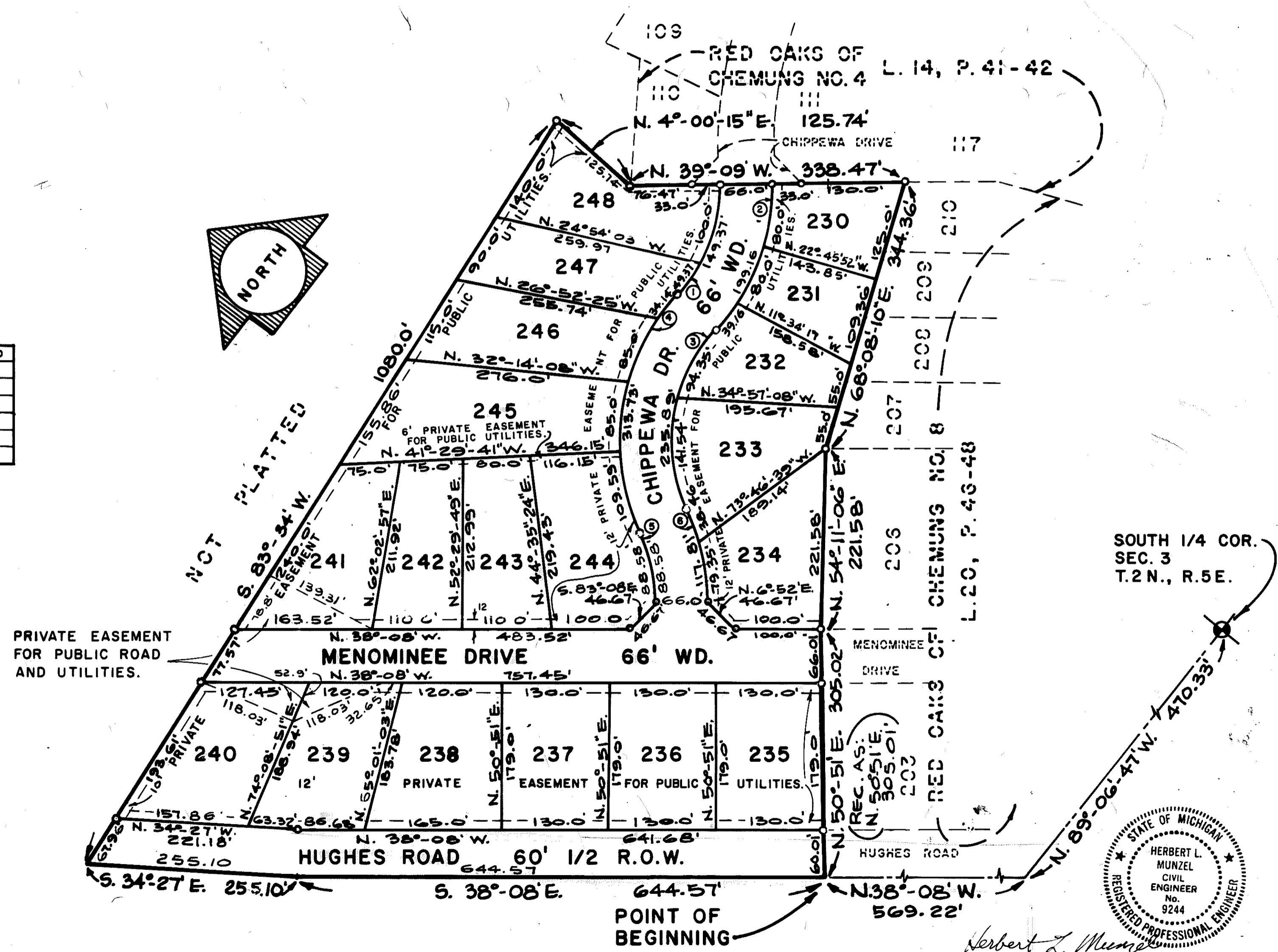
CURVE DATA

NO.	ARC	CENTRAL ANGLE	RADIUS	CHORD BEARING	CHORD
1	149.37	43°04'26"	198.69	N.72°31'57" E.	145.89
2	199.16	43°06'38"	264.69	N.72°30'51" E.	194.50
3	235.89	67°34'41"	200.00	N.60°16'48" E.	222.45
4	313.73	67°34'41"	266.00	N.60°16'48" E.	295.86
5	88.58	25°22'31"	200.00	N.39°10'45" E.	87.85
6	117.81	25°22'31"	266.00	N.39°10'45" E.	116.84

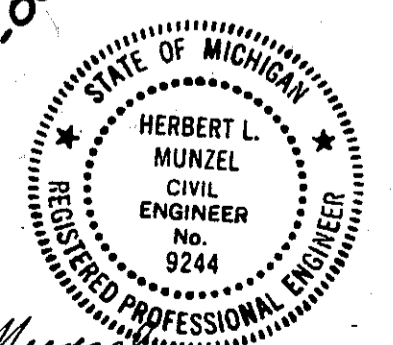


LOCATION SKETCH

NO SCALE



SOUTH 1/4 COR.
SEC. 3
T.2N., R.5E.



PREPARED AND DRAFTED BY:
HERBERT L. MUNZEL, P.E. AND R.L.S.
222 W. GRAND RIVER AVENUE
BRIGHTON, MICHIGAN 48116