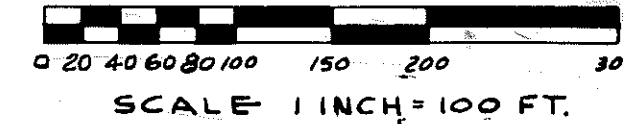


RED OAKS OF CHEMUNG NO. 7

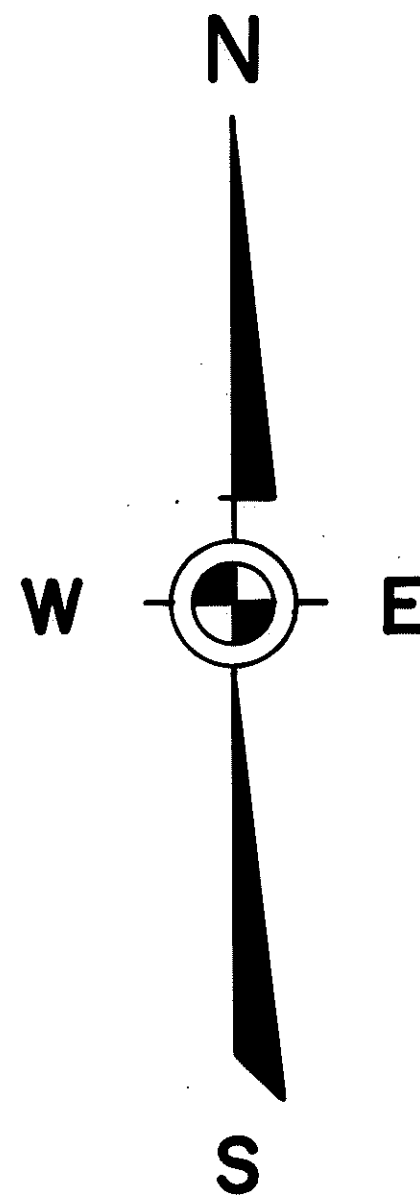
A SUBDIVISION OF A PART OF THE E. 1/2 SEC. 3
T. 2 N., R. 5 E., GENOA TOWNSHIP
LIVINGSTON CO., MICHIGAN



N. 1/4 COR.
SEC. 3
T. 2 N., R. 5 E.

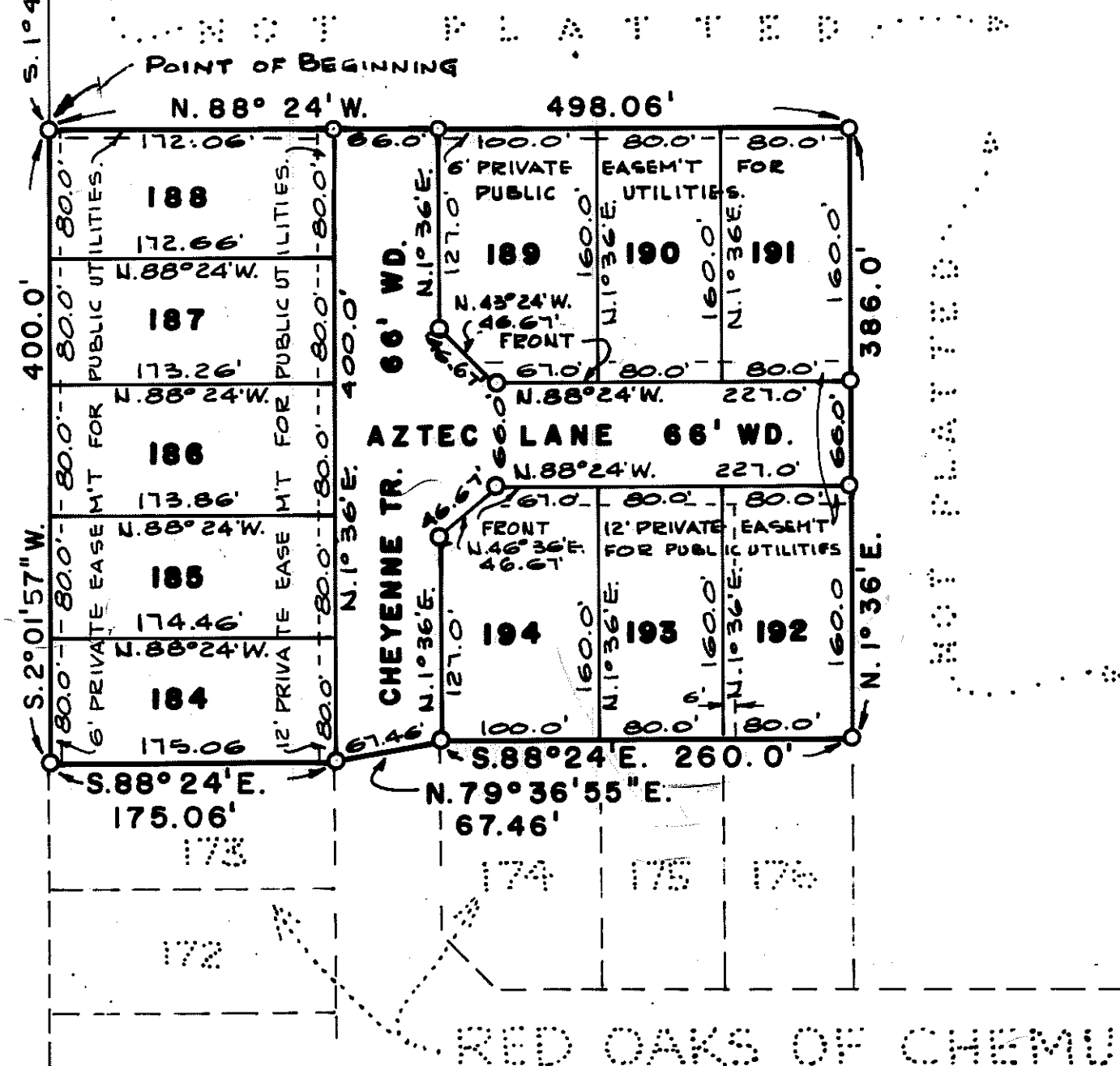
PLAT LEGEND

ALL DIMENSIONS ARE SHOWN IN FEET.
THE SYMBOL "O" INDICATES A CONCRETE MONUMENT.
ALL LOT MARKERS ARE 1/2" IRON RODS AND ARE 18" LONG.
ALL BEARINGS ARE RELATED TO THE BEARINGS OF THE N'LY LINE OF RED OAKS OF CHEMUNG NO. 6 SUB'N. LIBER 16, PAGES 19-20, LIVINGSTON COUNTY RECORDS.
ALL CURVILINEAR DIMENSIONS ARE SHOWN ALONG THE ARC.



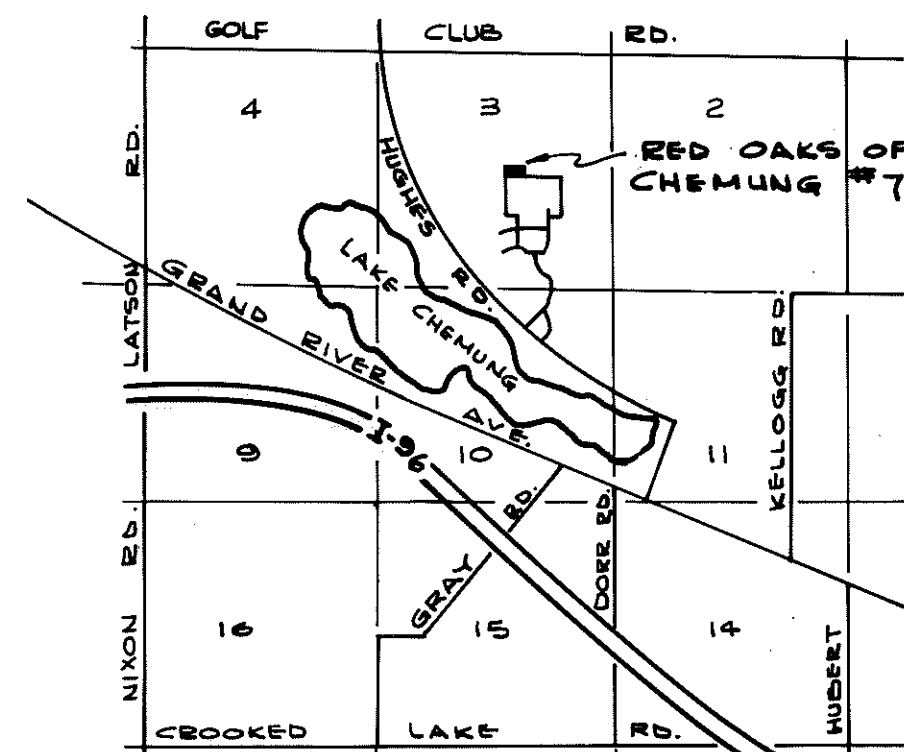
CERTIFIED TRUE COPY OF
RECORDED PLAT

Loren E. Monroe
LOREN E. MONROE
STATE TREASURER
By *Richard E. Lomas*
Richard E. Lomas, Plat Examiner
Date *February 12, 1979*

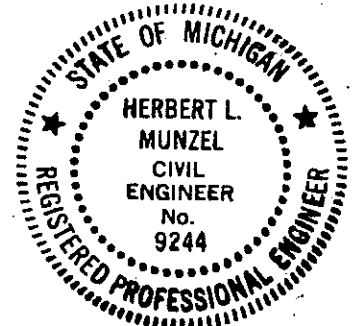


RED OAKS OF CHEMUNG NO. 6

L. 16, P. 19, 20



LOCATION SKETCH



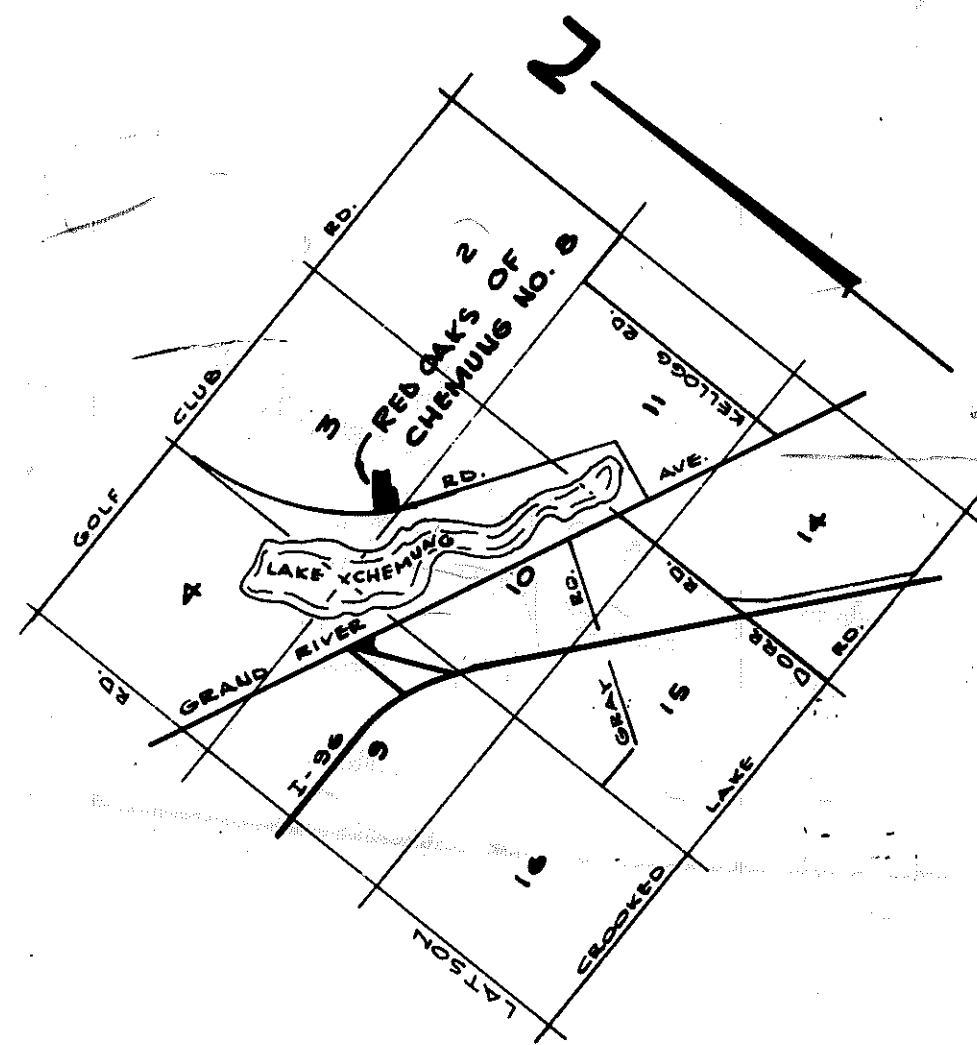
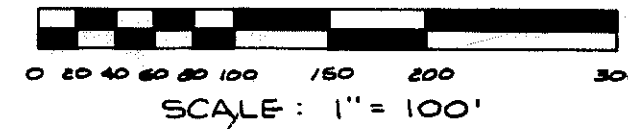
PREPARED AND DRAFTED BY
HERBERT L. MUNZEL
REG. PROF. ENGINEER #9244
222 W. GRAND RIVER
BRIGHTON, MICHIGAN 48116

1659

RED OAKS OF CHEMUNG NO. 8

A SUBDIVISION OF A PART OF THE S. 1/2
OF SEC. 3

T. 2 N., R. 5 E., GENOA TOWNSHIP
LIVINGSTON CO., MICHIGAN



LOCATION SKETCH

PLAT LEGEND

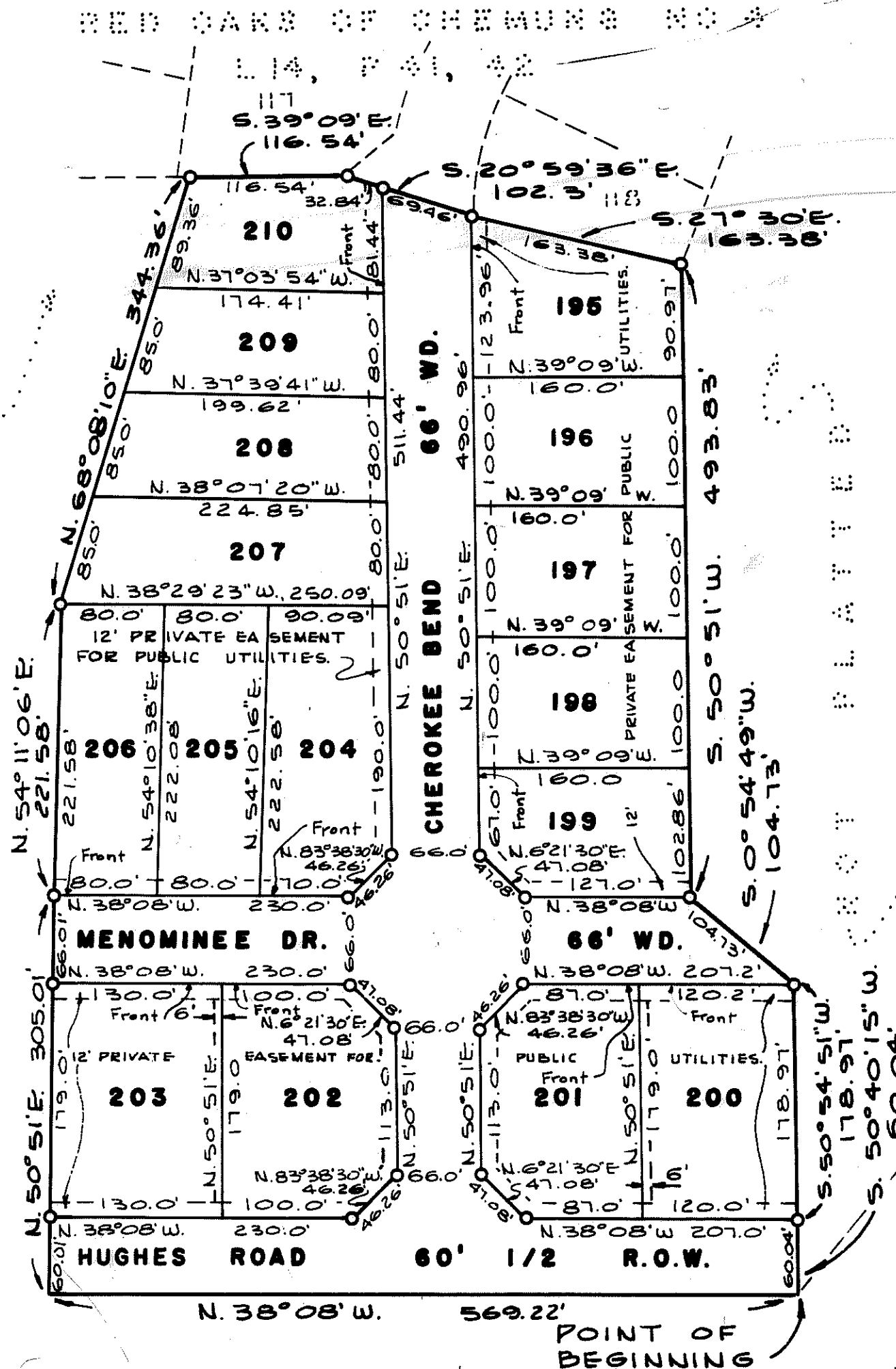
ALL DIMENSIONS ARE SHOWN IN FEET.

ALL CURVILINEAR DIMENSIONS ARE SHOWN ALONG THE ARC.

THE SYMBOL "o" INDICATES A CONCRETE MONUMENT.

ALL LOT MARKERS ARE 1/2" IRON PIPES AND ARE 18" LONG.

ALL BEARINGS ARE RELATED TO THE BEARINGS OF THE SOUTHWESTERLY LINE OF RED OAKS OF CHEMUNG NO. 4, LIBER 14, PAGES 41-42; LIVINGSTON COUNTY RECORDS.



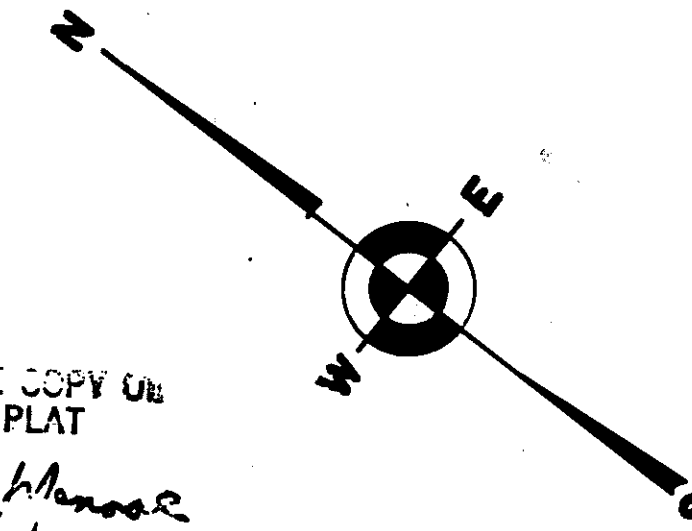
CERTIFIED TRUE COPY OF
RECORDED PLAT

Loren E. Monroe

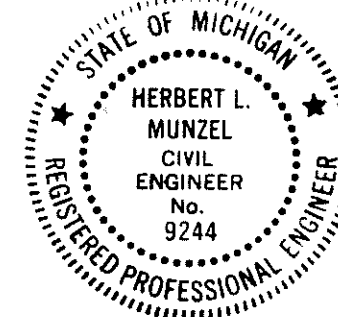
LOREN E. MONROE
STATE TREASURER

By *Richard E. Lomax*
Richard E. Lomax, Plat Examiner

Date *February 15, 1979*



S. 1/4 CORNER
SEC. 3
T. 2 N., R. 5 E.



PREPARED AND DRAFTED BY
HERBERT L. MUNZEL
REG. PROFESSIONAL ENG., NO. 9244
222 W. GRAND RIVER
BRIGHTON, MICHIGAN 48116

659