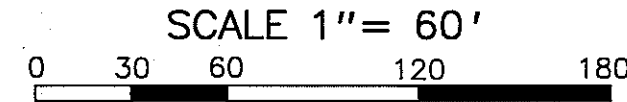


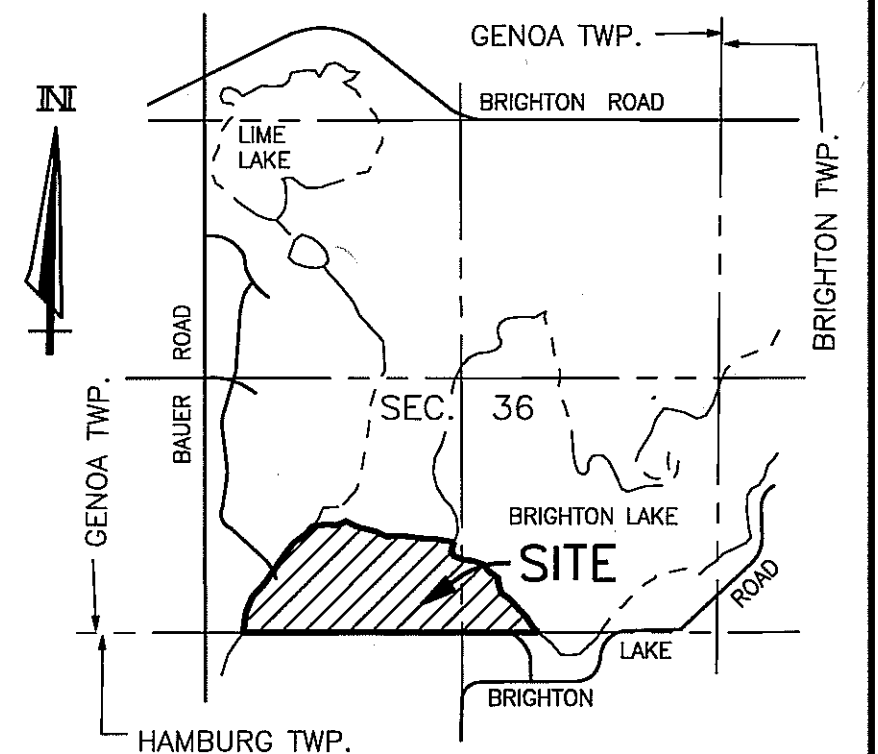
# PINE CREEK RIDGE SUBDIVISION NO. 6

A PART OF THE SE. 1/4 AND SW. 1/4 OF SECTION 36, T-2-N, R-5-E,  
GENOA TOWNSHIP, LIVINGSTON COUNTY, MICHIGAN

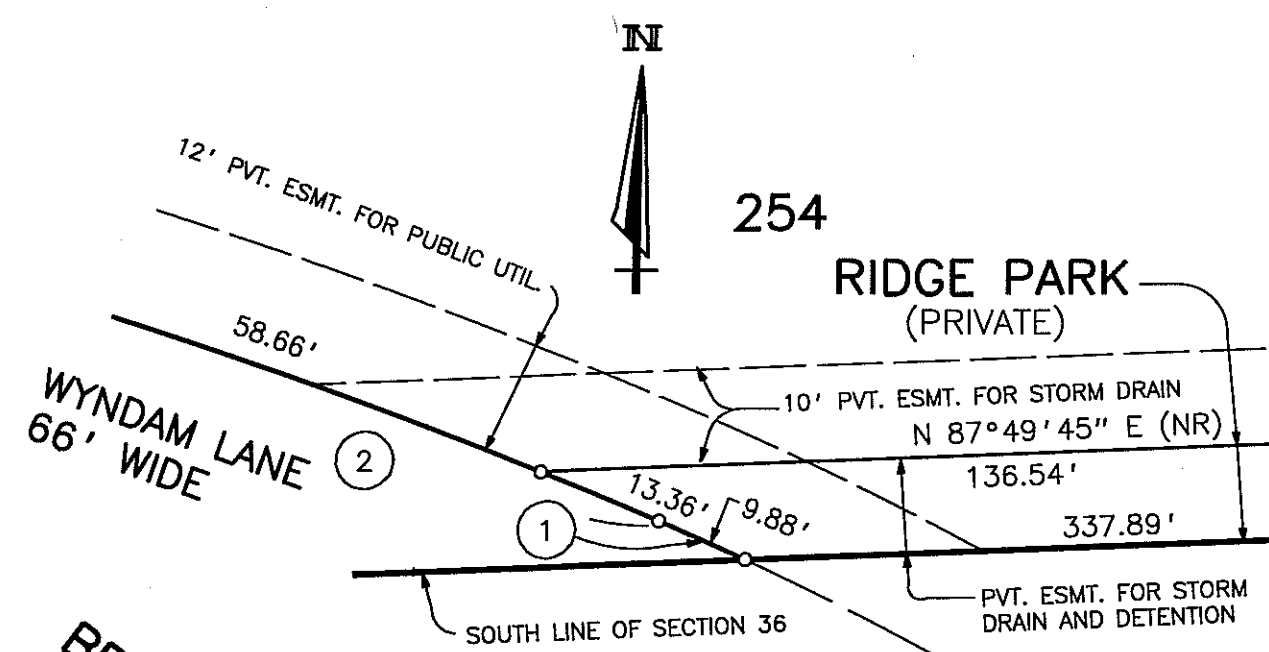
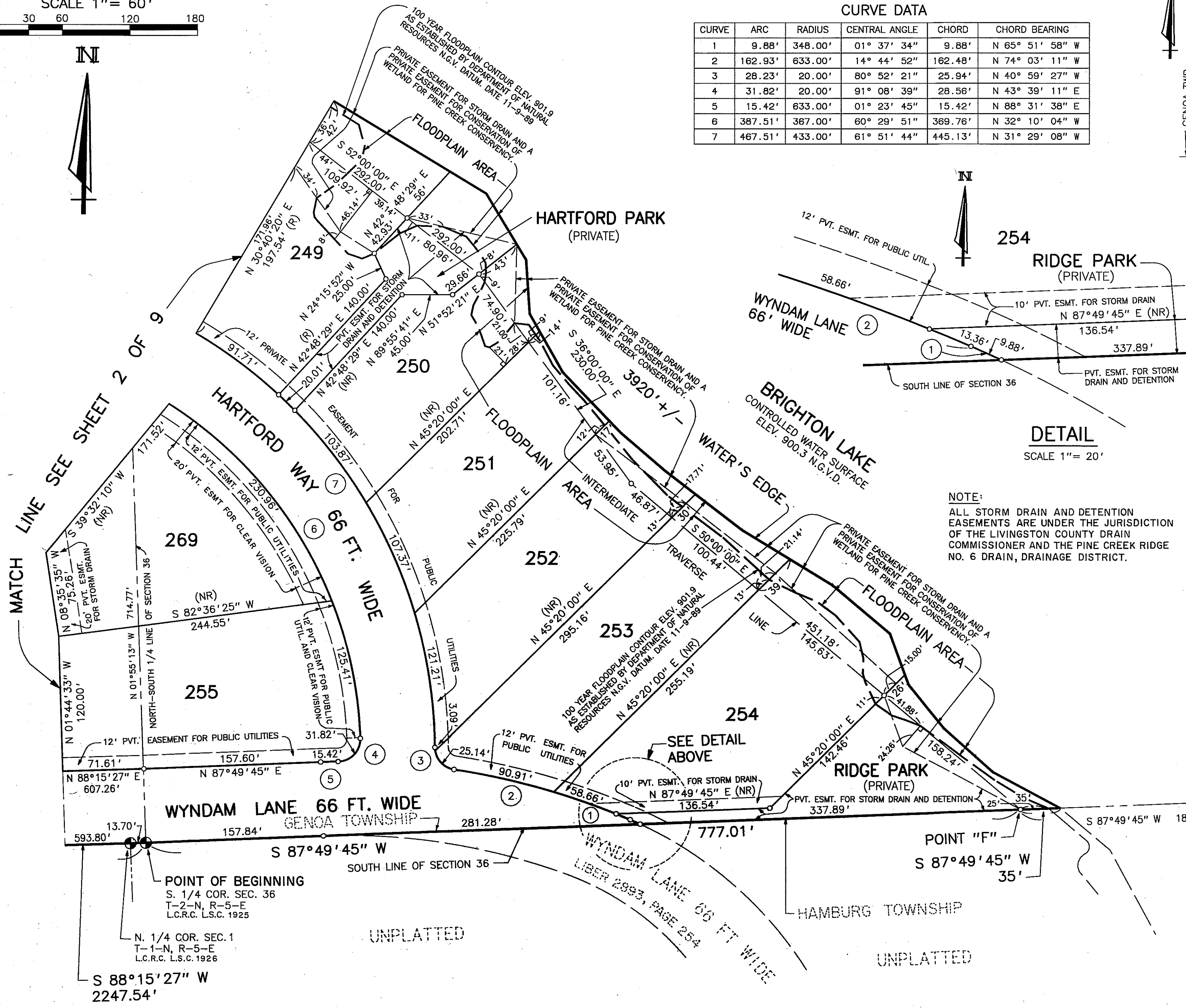


**CURVE DATA**

CURVE	ARC	RADIUS	CENTRAL ANGLE	CHORD	CHORD BEARING
1	9.88'	348.00'	01° 37' 34"	9.88'	N 65° 51' 58" W
2	162.93'	633.00'	14° 44' 52"	162.48'	N 74° 03' 11" W
3	28.23'	20.00'	80° 52' 21"	25.94'	N 40° 59' 27" W
4	31.82'	20.00'	91° 08' 39"	28.56'	N 43° 39' 11" E
5	15.42'	633.00'	01° 23' 45"	15.42'	N 88° 31' 38" E
6	387.51'	367.00'	60° 29' 51"	369.76'	N 32° 10' 04" W
7	467.51'	433.00'	61° 51' 44"	445.13'	N 31° 29' 08" W



**LOCATION MAP**  
SCALE 1" = 2000'



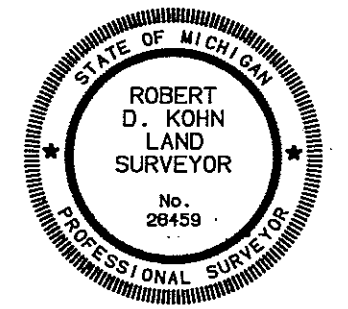
**DETAIL**  
SCALE 1" = 20'

**NOTE:**  
ALL STORM DRAIN AND DETENTION EASEMENTS ARE UNDER THE JURISDICTION OF THE LIVINGSTON COUNTY DRAIN COMMISSIONER AND THE PINE CREEK RIDGE NO. 6 DRAIN, DRAINAGE DISTRICT.

- LEGEND**
- ALL DIMENSIONS ARE GIVEN IN FEET.
  - CURVILINEAR MEASUREMENTS ARE ARC DISTANCES.
  - THE SYMBOL "o" INDICATES A SET MONUMENT WHICH IS A ONE-HALF (1/2) INCH DIAMETER STEEL BAR THIRTY SIX (36) INCHES LONG, ENCASED IN CONCRETE FOUR (4) INCHES IN DIAMETER.
  - LOT CORNERS HAVE BEEN MARKED WITH STEEL BARS ONE-HALF (1/2) INCH IN DIAMETER, AND EIGHTEEN (18) INCHES IN LENGTH.
  - (R) INDICATES A RADIAL LINE.
  - (NR) INDICATES A NON RADIAL LINE.
  - ∠ INDICATES A RIGHT ANGLE.
  - BEARINGS ARE IN RELATION TO THE TRUE MERIDIAN, AS DETERMINED BY POLARIS OBSERVATION, DATE 11/13/1984.
  - DENOTES FOUND MONUMENT 1/2 INCH STEEL BAR ENCASED IN CONCRETE 4 INCHES IN DIAMETER.

THIS PLAT IS SUBJECT TO RESTRICTIONS AS REQUIRED BY ACT 288 OF 1967 AS AMENDED ON CERTAIN LOTS WITH RESPECT TO THE REQUIREMENTS OF THE MICHIGAN DEPARTMENT OF ENVIRONMENTAL QUALITY WHICH ARE RECORDED IN LIBER 2993, PAGES 0050 OF RECORDS OF THIS COUNTY.

SE. COR. SEC. 36  
T-2-N, R-5-E  
L.C.R.C. L.S.C. 163 M

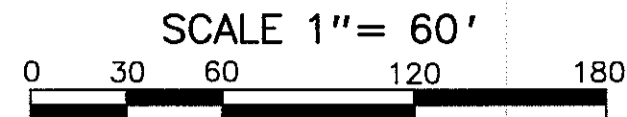


*Robert D. Kohn*

**Giffels-Webster Engineers Inc.**  
ENGINEERS - SURVEYORS - PLANNERS  
2871 BOND STREET ROCHESTER HILLS MICHIGAN  
(248) 852-3100

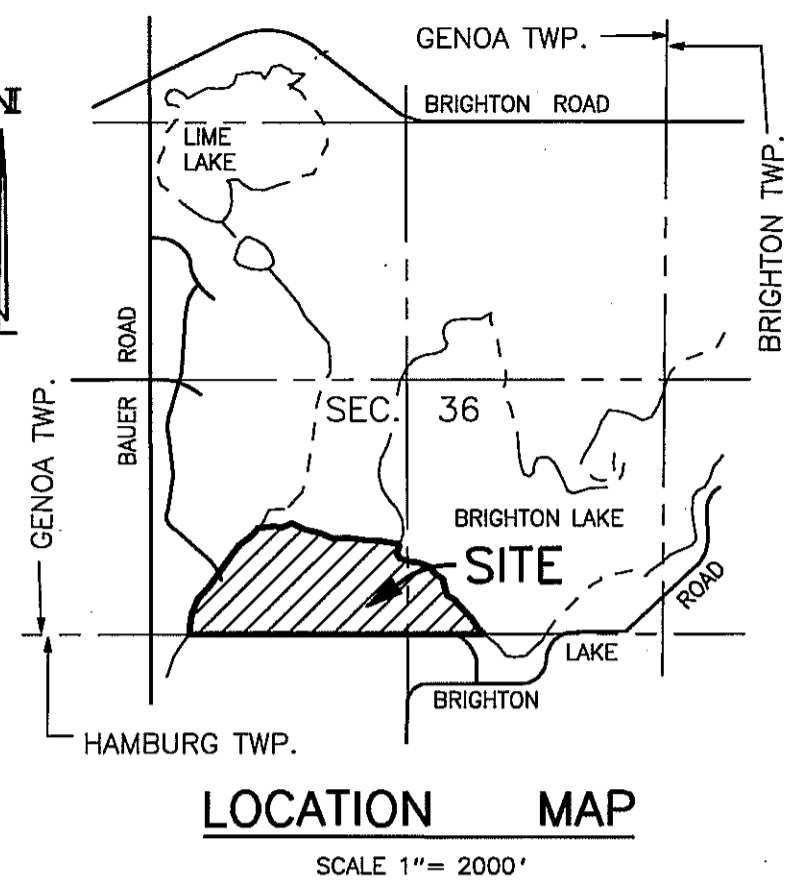
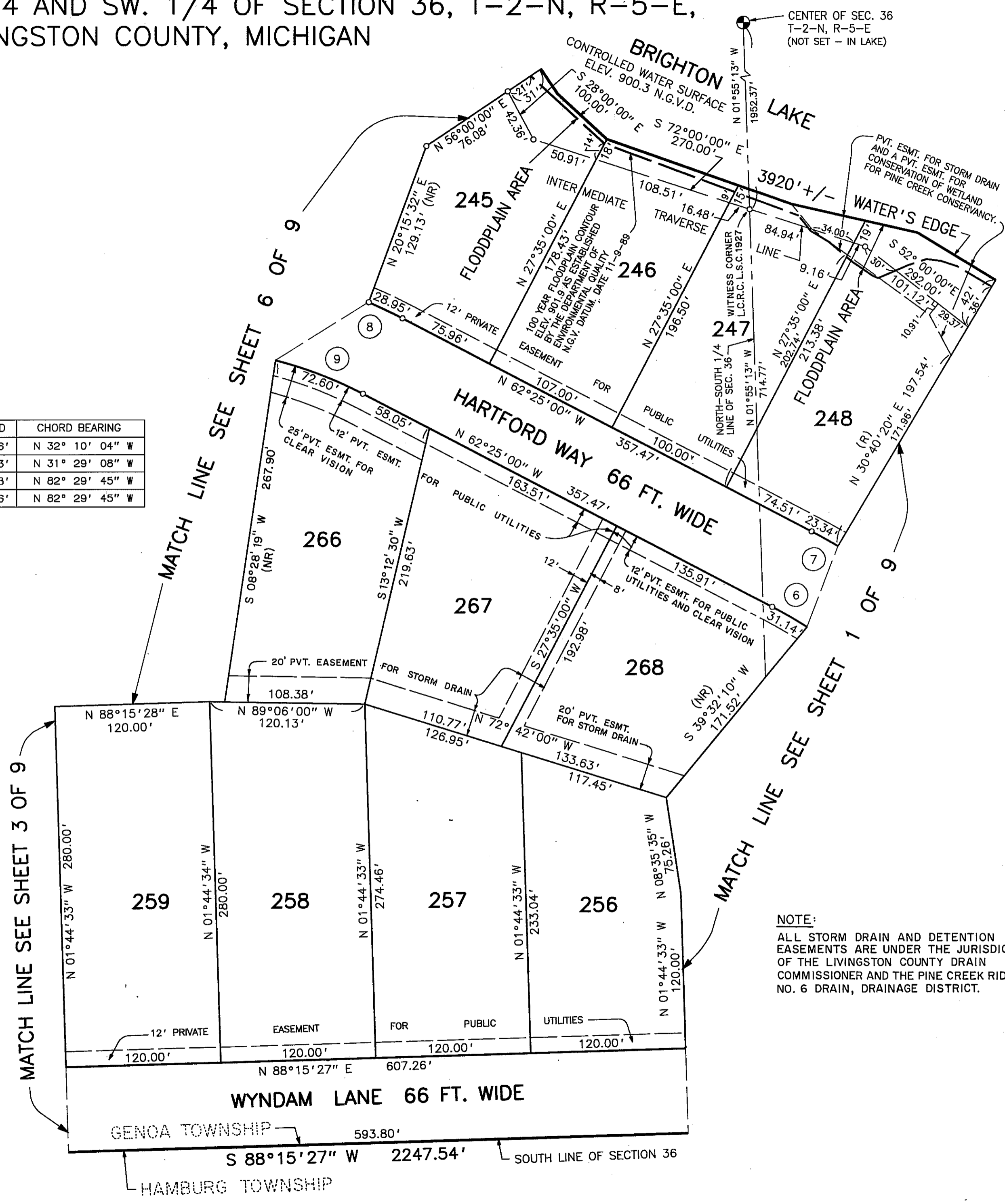
# PINE CREEK RIDGE SUBDIVISION NO. 6

A PART OF THE SE. 1/4 AND SW. 1/4 OF SECTION 36, T-2-N, R-5-E,  
GENOA TOWNSHIP, LIVINGSTON COUNTY, MICHIGAN



CURVE DATA

CURVE	ARC	RADIUS	CENTRAL ANGLE	CHORD	CHORD BEARING
6	387.51'	367.00'	60° 29' 51"	369.76'	N 32° 10' 04" W
7	467.51'	433.00'	61° 51' 44"	445.13'	N 31° 29' 08" W
8	268.44'	383.00'	40° 09' 30"	262.98'	N 82° 29' 45" W
9	222.18'	317.00'	40° 09' 30"	217.66'	N 82° 29' 45" W



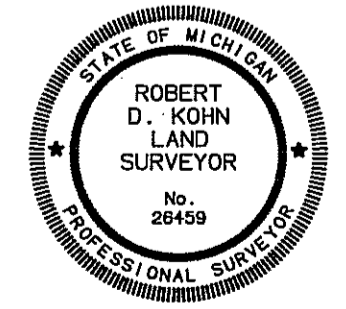
LOCATION MAP  
SCALE 1" = 2000'

### LEGEND

- ALL DIMENSIONS ARE GIVEN IN FEET.
- CURVILINEAR MEASUREMENTS ARE ARC DISTANCES.
- THE SYMBOL "o" INDICATES A SET MONUMENT WHICH IS A ONE-HALF (1/2) INCH DIAMETER STEEL BAR THIRTY SIX (36) INCHES LONG, ENCASED IN CONCRETE FOUR (4) INCHES IN DIAMETER.
- LOT CORNERS HAVE BEEN MARKED WITH STEEL BARS ONE-HALF (1/2) INCH IN DIAMETER, AND EIGHTEEN (18) INCHES IN LENGTH.
- (R) INDICATES A RADIAL LINE.
- (NR) INDICATES A NON RADIAL LINE.
- L INDICATES A RIGHT ANGLE.
- BEARINGS ARE IN RELATION TO THE TRUE MERIDIAN, AS DETERMINED BY POLARIS OBSERVATION, DATE 11/13/1984.
- DENOTES FOUND MONUMENT 1/2 INCH STEEL BAR ENCASED IN CONCRETE 4 INCHES IN DIAMETER.

THIS PLAT IS SUBJECT TO RESTRICTIONS AS REQUIRED BY ACT 288 OF 1967 AS AMENDED ON CERTAIN LOTS WITH RESPECT TO THE REQUIREMENTS OF THE MICHIGAN DEPARTMENT OF ENVIRONMENTAL QUALITY WHICH ARE RECORDED IN LIBER 2493, PAGES 0050 OF RECORDS OF THIS COUNTY.

NOTE:  
ALL STORM DRAIN AND DETENTION EASEMENTS ARE UNDER THE JURISDICTION OF THE LIVINGSTON COUNTY DRAIN COMMISSIONER AND THE PINE CREEK RIDGE NO. 6 DRAIN, DRAINAGE DISTRICT.



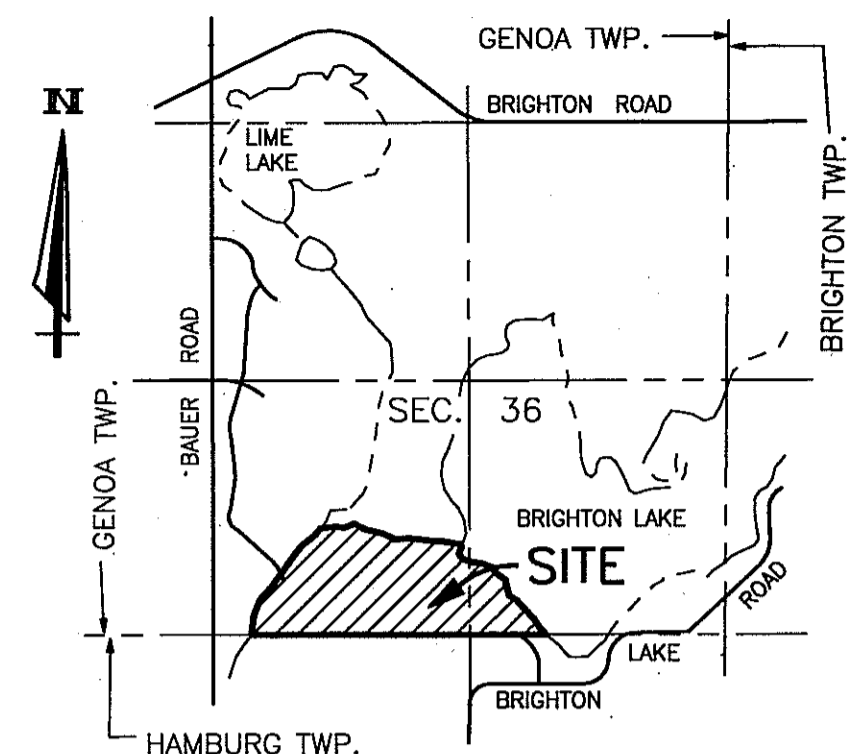
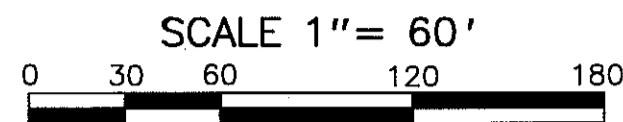
*Robert D. Kohn*

**Giffels-Webster Engineers Inc.**  
ENGINEERS - SURVEYORS - PLANNERS  
2871 BOND STREET ROCHESTER HILLS MICHIGAN  
(248) 852-3100

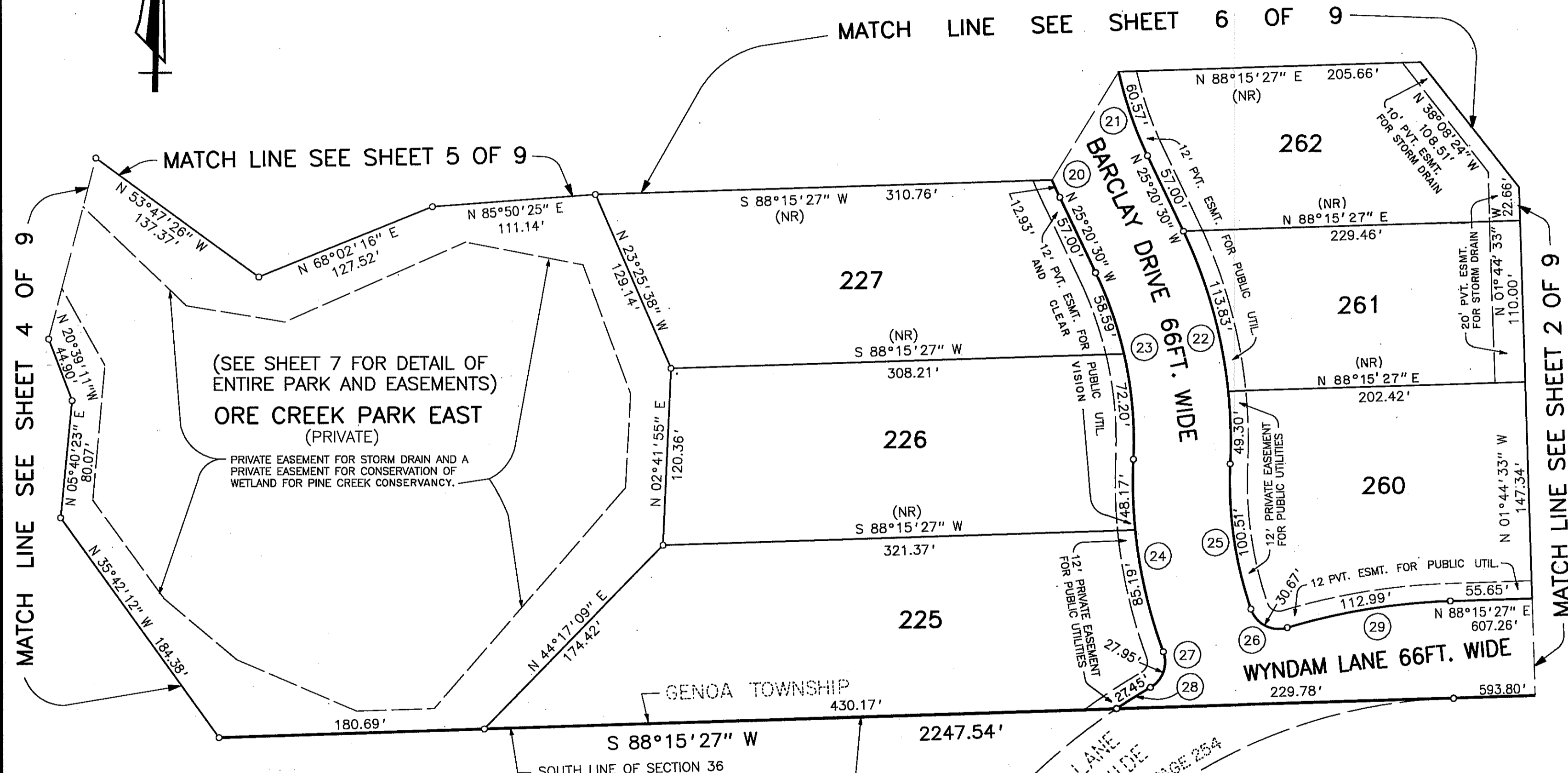
UNPLATTED

# PINE CREEK RIDGE SUBDIVISION NO. 6

A PART OF THE SE. 1/4 AND SW. 1/4 OF SECTION 36, T-2-N, R-5-E,  
GENOA TOWNSHIP, LIVINGSTON COUNTY, MICHIGAN



LOCATION MAP  
SCALE 1"= 2000'



(SEE SHEET 7 FOR DETAIL OF  
ENTIRE PARK AND EASEMENTS)  
**ORE CREEK PARK EAST**  
(PRIVATE)  
PRIVATE EASEMENT FOR STORM DRAIN AND A  
PRIVATE EASEMENT FOR CONSERVATION OF  
WETLAND FOR PINE CREEK CONSERVANCY.

### LEGEND

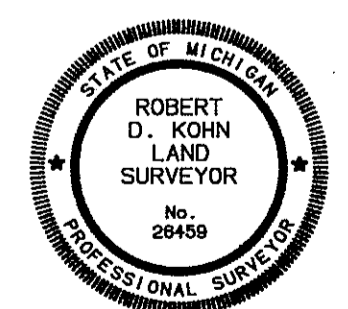
1. ALL DIMENSIONS ARE GIVEN IN FEET.
2. CURVILINEAR MEASUREMENTS ARE ARC DISTANCES.
3. THE SYMBOL "o" INDICATES A SET MONUMENT WHICH IS A ONE-HALF (1/2) INCH DIAMETER STEEL BAR THIRTY SIX (36) INCHES LONG, ENCASED IN CONCRETE FOUR (4) INCHES IN DIAMETER.
4. LOT CORNERS HAVE BEEN MARKED WITH STEEL BARS ONE-HALF (1/2) INCH IN DIAMETER, AND EIGHTEEN (18) INCHES IN LENGTH.
5. (R) INDICATES A RADIAL LINE.
6. (NR) INDICATES A NON RADIAL LINE.
7. L INDICATES A RIGHT ANGLE.
8. BEARINGS ARE IN RELATION TO THE TRUE MERIDIAN, AS DETERMINED BY POLARIS OBSERVATION, DATE 11/13/1984.
9. ■ DENOTES FOUND MONUMENT 1/2 INCH STEEL BAR ENCASED IN CONCRETE 4 INCHES IN DIAMETER.

THIS PLAT IS SUBJECT TO RESTRICTIONS AS REQUIRED BY ACT 288 OF 1967 AS AMENDED ON CERTAIN LOTS WITH RESPECT TO THE REQUIREMENTS OF THE MICHIGAN DEPARTMENT OF ENVIRONMENTAL QUALITY WHICH ARE RECORDED IN LIBER 2493, PAGES 00 56 OF RECORDS OF THIS COUNTY.

CURVE DATA

CURVE	ARC	RADIUS	CENTRAL ANGLE	CHORD	CHORD BEARING
20	209.76'	333.00'	36° 05' 30"	206.31'	N 07° 17' 45" W
21	168.19'	267.00'	36° 05' 30"	165.42'	N 07° 17' 45" W
22	163.13'	333.00'	28° 04' 02"	161.50'	N 11° 18' 29" W
23	130.79'	267.00'	28° 04' 02"	129.49'	N 11° 18' 29" W
24	133.36'	333.00'	22° 56' 46"	132.47'	N 08° 44' 51" W
25	100.51'	267.00'	21° 34' 03"	99.91'	N 08° 03' 29" W
26	30.67'	20.00'	87° 51' 04"	27.75'	N 62° 46' 03" W
27	27.95'	20.00'	80° 03' 34"	25.73'	N 19° 48' 33" E
28	27.45'	433.00'	03° 37' 57"	27.45'	N 58° 01' 21" E
29	112.99'	433.00'	14° 57' 02"	112.66'	N 80° 46' 56" E

NOTE:  
ALL STORM DRAIN AND DETENTION EASEMENTS ARE UNDER THE JURISDICTION OF THE LIVINGSTON COUNTY DRAIN COMMISSIONER AND THE PINE CREEK RIDGE NO. 6 DRAIN, DRAINAGE DISTRICT.

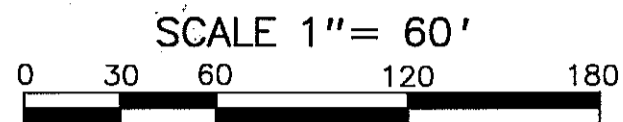


*Robert D. Kohn*

**Giffels-Webster Engineers Inc.**  
ENGINEERS - SURVEYORS - PLANNERS  
2871 BOND STREET ROCHESTER HILLS MICHIGAN  
(248) 852-3100

# PINE CREEK RIDGE SUBDIVISION NO. 6

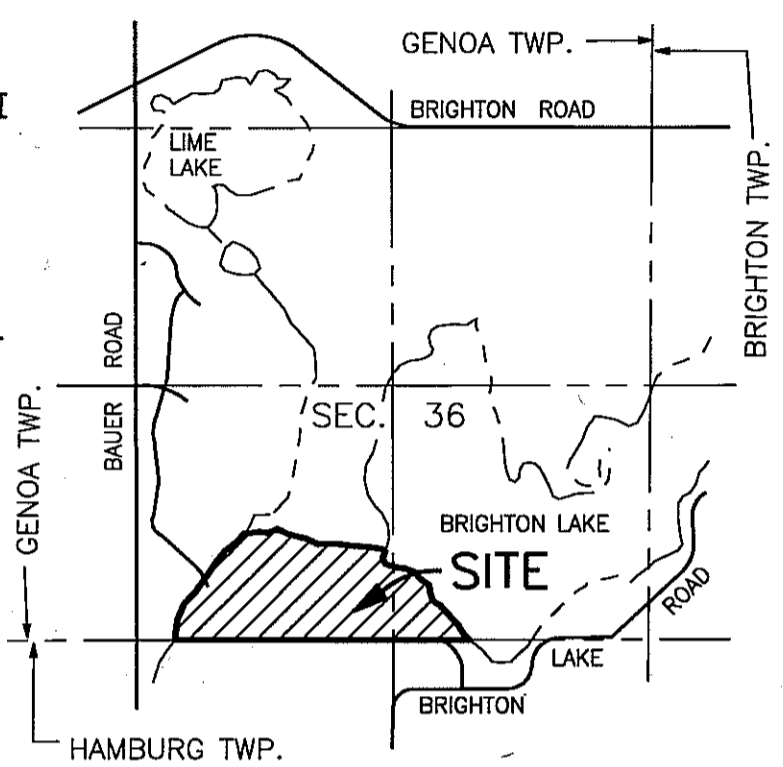
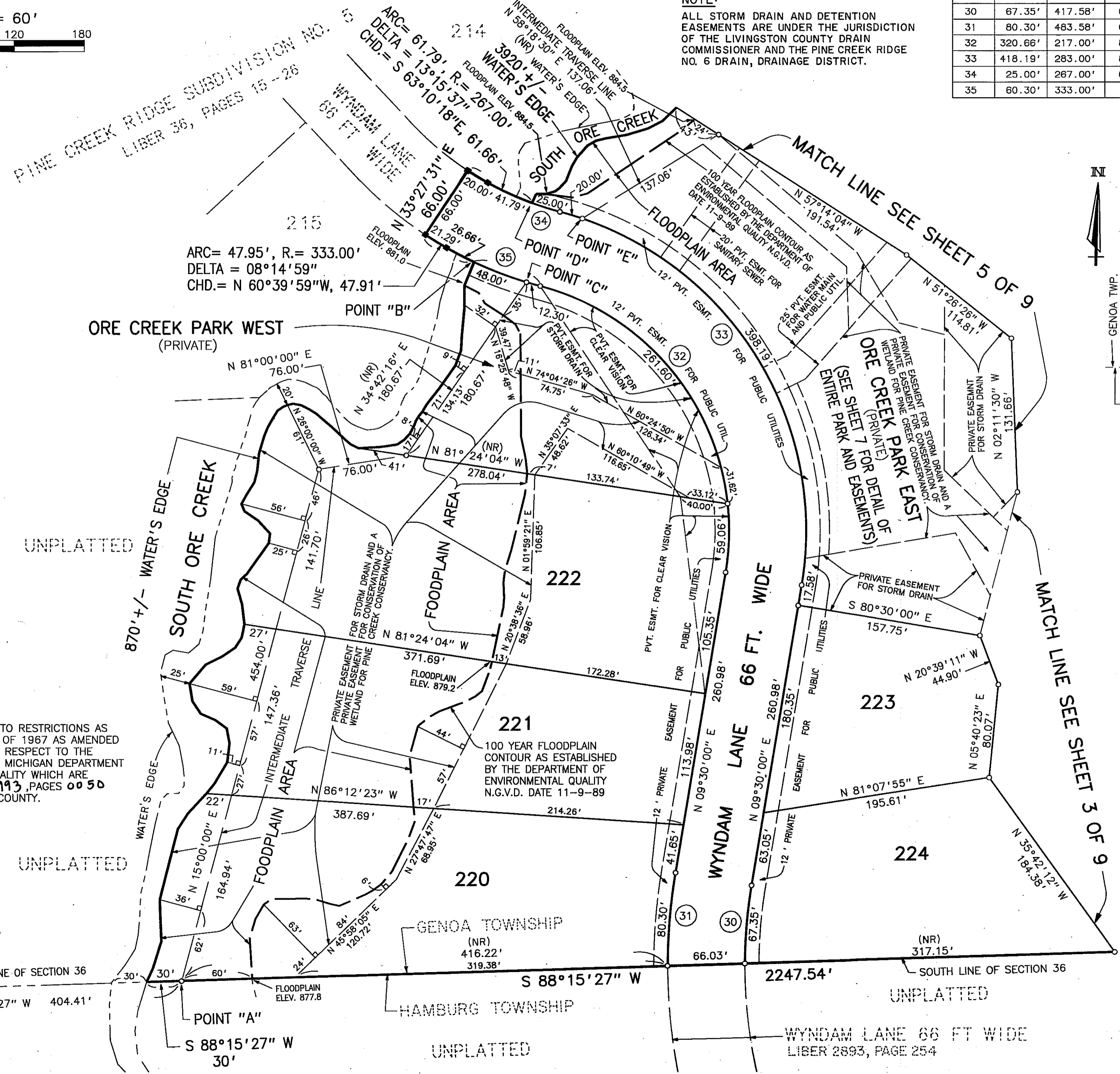
A PART OF THE SE. 1/4 AND SW. 1/4 OF SECTION 36, T-2-N, R-5-E,  
GENOA TOWNSHIP, LIVINGSTON COUNTY, MICHIGAN



CURVE DATA

CURVE	ARC	RADIUS	CENTRAL ANGLE	CHORD	CHORD BEARING
30	67.35'	417.58'	09° 14' 29"	67.28'	N 04° 52' 46" E
31	80.30'	483.58'	09° 30' 52"	80.21'	N 04° 44' 34" E
32	320.66'	217.00'	84° 40' 00"	292.27'	N 32° 50' 00" W
33	418.19'	283.00'	84° 40' 00"	381.17'	N 32° 50' 00" W
34	25.00'	267.00'	05° 21' 53"	24.99'	N 72° 29' 03" W
35	60.30'	333.00'	10° 22' 31"	60.22'	N 69° 58' 44" W

NOTE:  
ALL STORM DRAIN AND DETENTION EASEMENTS ARE UNDER THE JURISDICTION OF THE LIVINGSTON COUNTY DRAIN COMMISSIONER AND THE PINE CREEK RIDGE NO. 6 DRAIN, DRAINAGE DISTRICT.



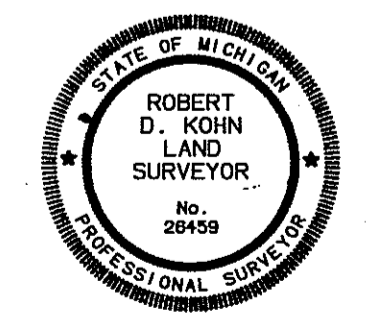
LOCATION MAP

SCALE 1" = 2000'

LEGEND

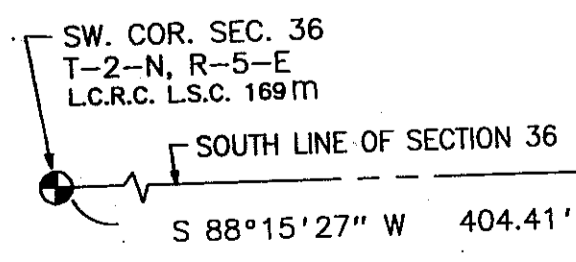
- ALL DIMENSIONS ARE GIVEN IN FEET.
- CURVILINEAR MEASUREMENTS ARE ARC DISTANCES.
- THE SYMBOL "o" INDICATES A SET MONUMENT WHICH IS A ONE-HALF (1/2) INCH DIAMETER STEEL BAR THIRTY SIX (36) INCHES LONG, ENCASED IN CONCRETE FOUR (4) INCHES IN DIAMETER.
- LOT CORNERS HAVE BEEN MARKED WITH STEEL BARS ONE-HALF (1/2) INCH IN DIAMETER, AND EIGHTEEN (18) INCHES IN LENGTH.
- (R) INDICATES A RADIAL LINE.
- (NR) INDICATES A NON RADIAL LINE.
- L INDICATES A RIGHT ANGLE.
- BEARINGS ARE IN RELATION TO THE TRUE MERIDIAN, AS DETERMINED BY POLARIS OBSERVATION, DATE 11/13/1984.
- DENOTES FOUND MONUMENT 1/2 INCH STEEL BAR ENCASED IN CONCRETE 4 INCHES IN DIAMETER.

THIS PLAT IS SUBJECT TO RESTRICTIONS AS REQUIRED BY ACT 288 OF 1967 AS AMENDED ON CERTAIN LOTS WITH RESPECT TO THE REQUIREMENTS OF THE MICHIGAN DEPARTMENT OF ENVIRONMENTAL QUALITY WHICH ARE RECORDED IN LIBER 2993, PAGES 0050 OF RECORDS OF THIS COUNTY.



*Robert D. Kohn*

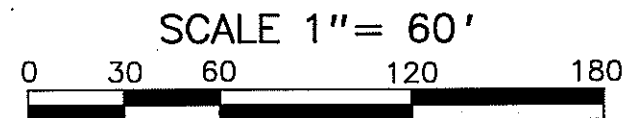
**Giffels-Webster Engineers Inc.**  
ENGINEERS - SURVEYORS - PLANNERS  
2871 BOND STREET ROCHESTER HILLS MICHIGAN  
(248) 852-3100



# PINE CREEK RIDGE SUBDIVISION NO. 6

A PART OF THE SE. 1/4 AND SW. 1/4 OF SECTION 36, T-2-N, R-5-E,  
GENOA TOWNSHIP, LIVINGSTON COUNTY, MICHIGAN

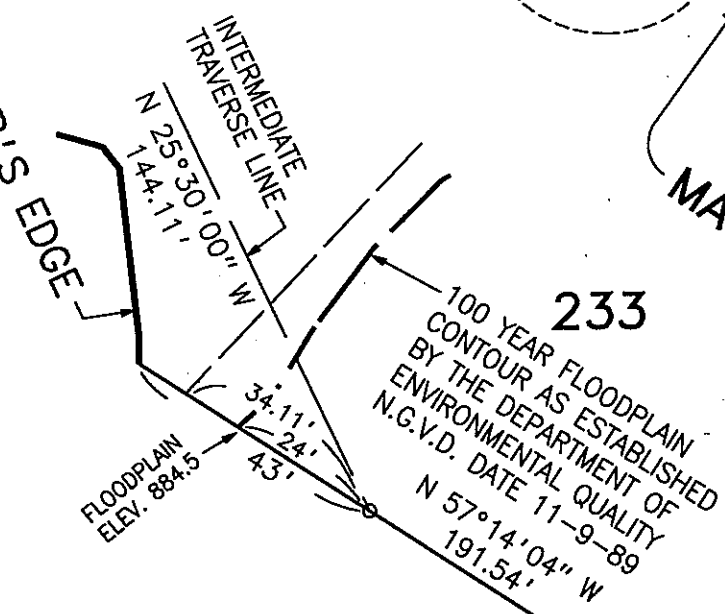
PINE CREEK RIDGE SUBDIVISION NO. 1  
LIBER 28, PAGES 15-25



PINE CREEK RIDGE SUBDIVISION NO. 5  
LIBER 36, PAGES 15-26

INTERMEDIATE TRAVERSE LINE  
N 25°30'00" W 144.11'

SEE DETAIL BELOW

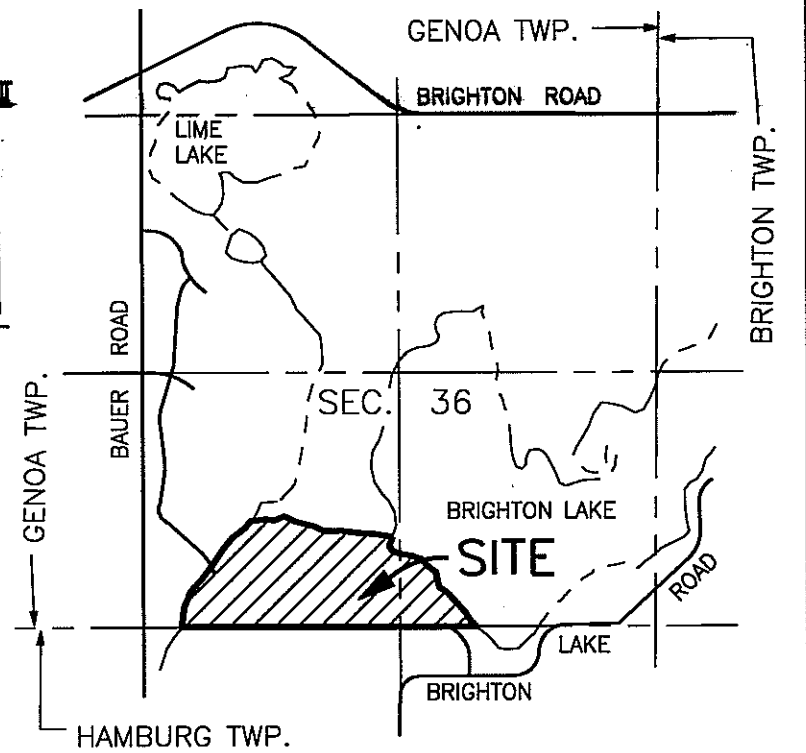
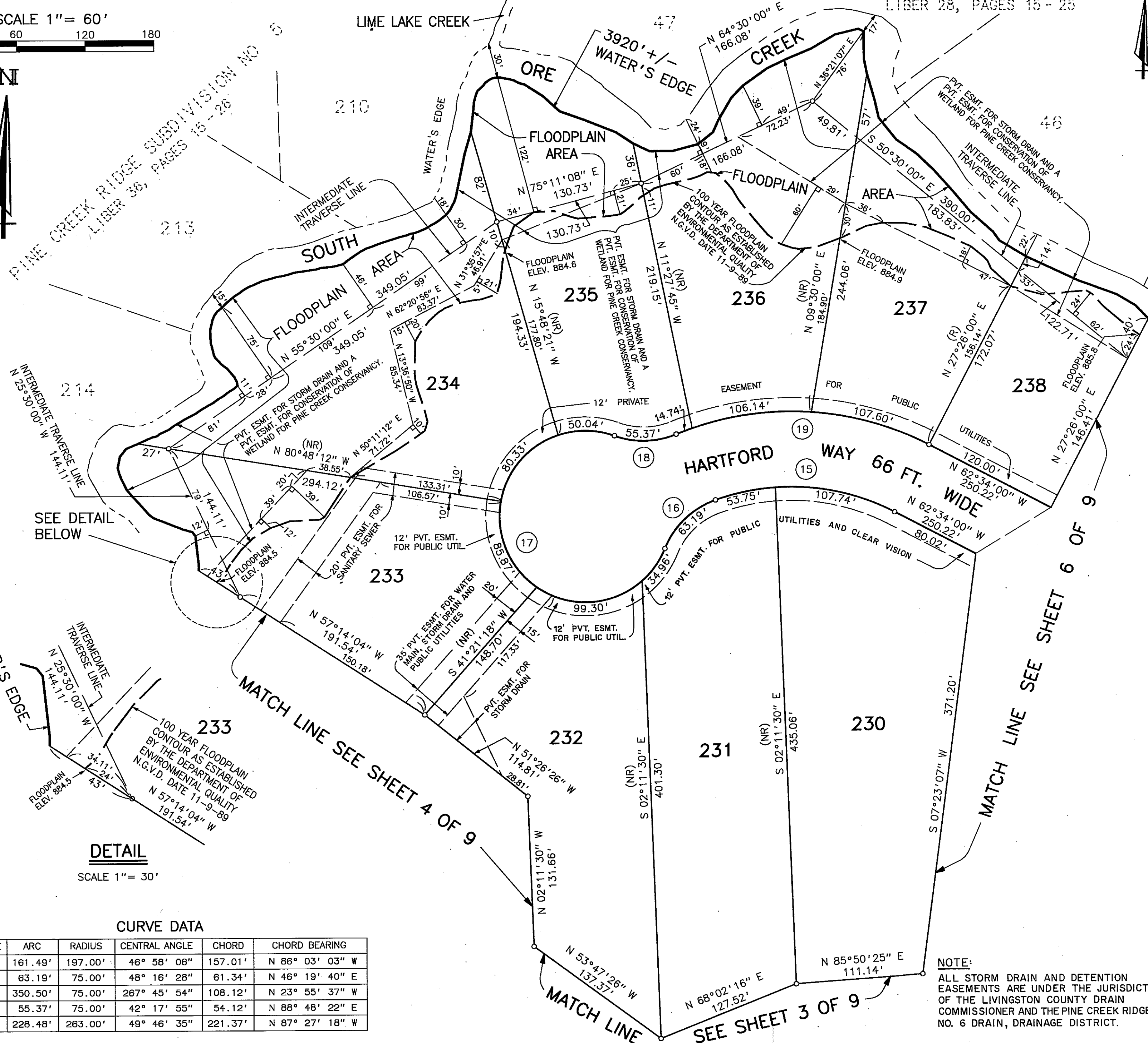


**DETAIL**

SCALE 1" = 30'

**CURVE DATA**

CURVE	ARC	RADIUS	CENTRAL ANGLE	CHORD	CHORD BEARING
15	161.49'	197.00'	46° 58' 06"	157.01'	N 86° 03' 03" W
16	63.19'	75.00'	48° 16' 28"	61.34'	N 46° 19' 40" E
17	350.50'	75.00'	267° 45' 54"	108.12'	N 23° 55' 37" W
18	55.37'	75.00'	42° 17' 55"	54.12'	N 88° 48' 22" E
19	228.48'	263.00'	49° 46' 35"	221.37'	N 87° 27' 18" W



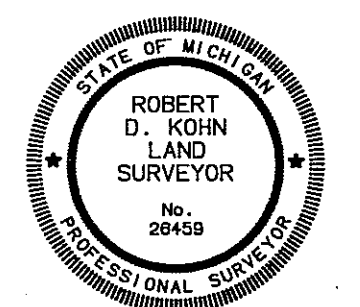
**LOCATION MAP**

SCALE 1" = 2000'

**LEGEND**

1. ALL DIMENSIONS ARE GIVEN IN FEET.
2. CURVILINEAR MEASUREMENTS ARE ARC DISTANCES.
3. THE SYMBOL "o" INDICATES A SET MONUMENT WHICH IS A ONE-HALF (1/2) INCH DIAMETER STEEL BAR THIRTY SIX (36) INCHES LONG, ENCASED IN CONCRETE FOUR (4) INCHES IN DIAMETER.
4. LOT CORNERS HAVE BEEN MARKED WITH STEEL BARS ONE-HALF (1/2) INCH IN DIAMETER, AND EIGHTEEN (18) INCHES IN LENGTH.
5. (R) INDICATES A RADIAL LINE.
6. (NR) INDICATES A NON RADIAL LINE.
7. ∟ INDICATES A RIGHT ANGLE.
8. BEARINGS ARE IN RELATION TO THE TRUE MERIDIAN, AS DETERMINED BY POLARIS OBSERVATION, DATE 11/13/1984.
9. ■ DENOTES FOUND MONUMENT 1/2 INCH STEEL BAR ENCASED IN CONCRETE 4 INCHES IN DIAMETER.

THIS PLAT IS SUBJECT TO RESTRICTIONS AS REQUIRED BY ACT 288 OF 1967 AS AMENDED ON CERTAIN LOTS WITH RESPECT TO THE REQUIREMENTS OF THE MICHIGAN DEPARTMENT OF ENVIRONMENTAL QUALITY WHICH ARE RECORDED IN LIBER 2993, PAGES 0050 OF RECORDS OF THIS COUNTY.



*Robert D. Kohn*

**Giffels-Webster Engineers Inc.**

ENGINEERS - SURVEYORS - PLANNERS  
2871 BOND STREET ROCHESTER HILLS MICHIGAN  
(248) 852-3100

**NOTE:**  
ALL STORM DRAIN AND DETENTION EASEMENTS ARE UNDER THE JURISDICTION OF THE LIVINGSTON COUNTY DRAIN COMMISSIONER AND THE PINE CREEK RIDGE NO. 6 DRAIN, DRAINAGE DISTRICT.

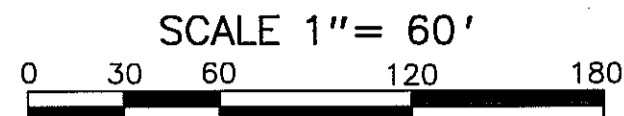
SEE SHEET 3 OF 9

MATCH LINE SEE SHEET 4 OF 9

MATCH LINE SEE SHEET 6 OF 9

# PINE CREEK RIDGE SUBDIVISION NO. 6

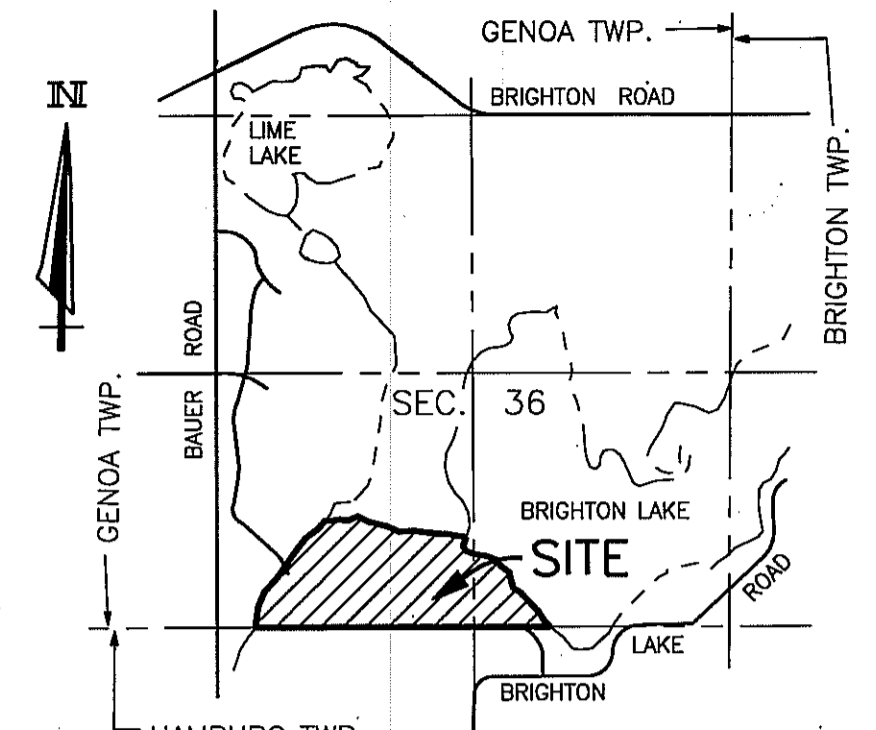
A PART OF THE SE. 1/4 AND SW. 1/4 OF SECTION 36, T-2-N, R-5-E,  
GENOA TOWNSHIP, LIVINGSTON COUNTY, MICHIGAN



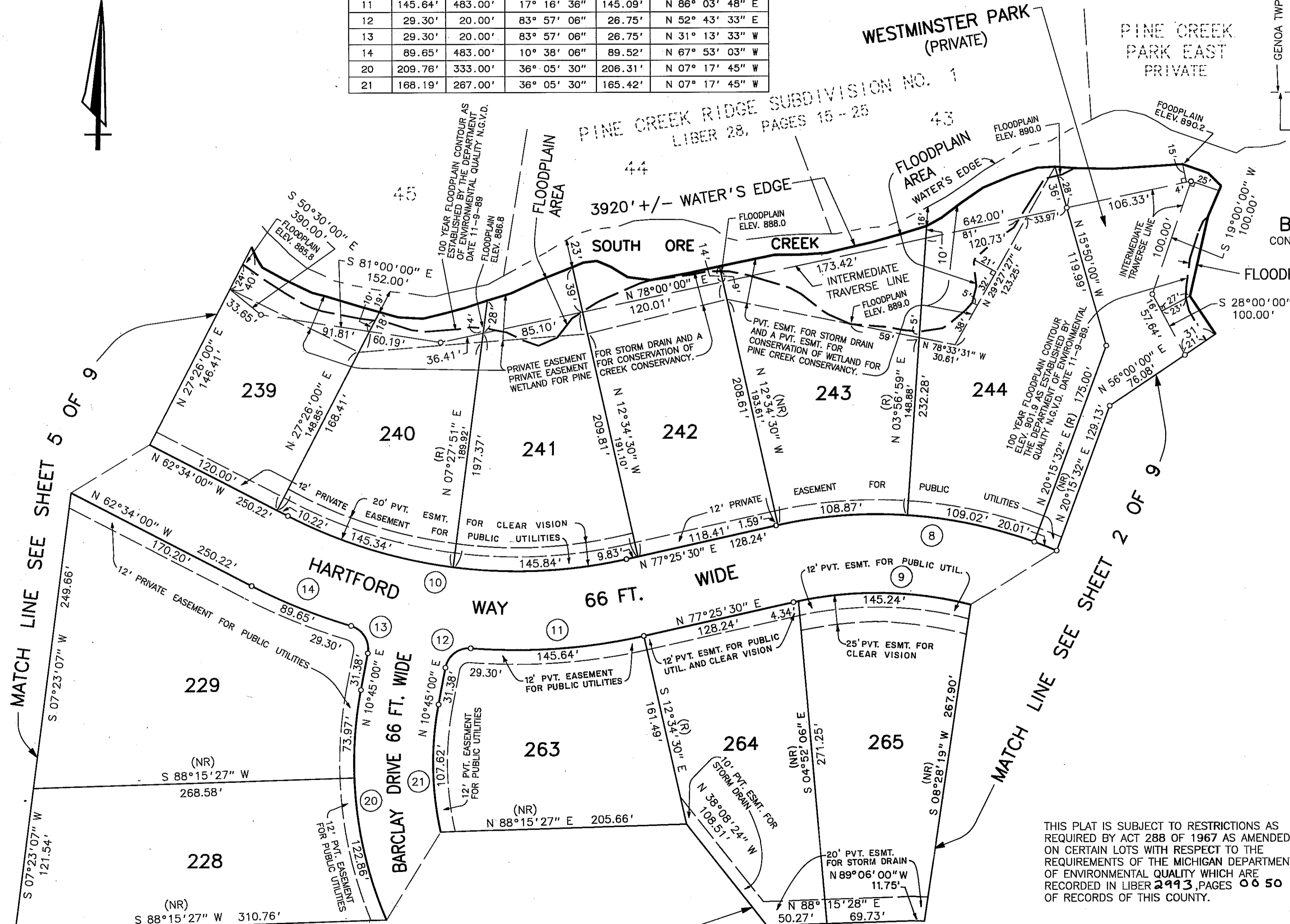
CURVE DATA

CURVE	ARC	RADIUS	CENTRAL ANGLE	CHORD	CHORD BEARING
8	268.44'	383.00'	40° 09' 30"	262.98'	N 82° 29' 45" W
9	222.18'	317.00'	40° 09' 30"	217.66'	N 82° 29' 45" W
10	291.18'	417.00'	40° 00' 30"	285.30'	N 82° 34' 15" W
11	145.64'	483.00'	17° 16' 36"	145.09'	N 86° 03' 48" E
12	29.30'	20.00'	83° 57' 06"	26.75'	N 52° 43' 33" E
13	29.30'	20.00'	83° 57' 06"	26.75'	N 31° 13' 33" W
14	89.65'	483.00'	10° 38' 06"	89.52'	N 67° 53' 03" W
20	209.76'	333.00'	36° 05' 30"	206.31'	N 07° 17' 45" W
21	168.19'	267.00'	36° 05' 30"	165.42'	N 07° 17' 45" W

NOTE:  
ALL STORM DRAIN AND DETENTION  
EASEMENTS ARE UNDER THE JURISDICTION  
OF THE LIVINGSTON COUNTY DRAIN  
COMMISSIONER AND THE PINE CREEK RIDGE  
NO. 6 DRAIN, DRAINAGE DISTRICT.



LOCATION MAP  
SCALE 1" = 2000'

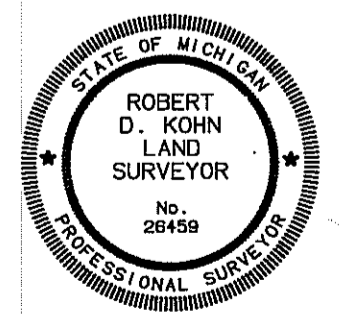


BRIGHTON LAKE  
CONTROLLED WATER SURFACE  
ELEV. 900.3 N.G.V.D.

LEGEND

- ALL DIMENSIONS ARE GIVEN IN FEET.
- CURVILINEAR MEASUREMENTS ARE ARC DISTANCES.
- THE SYMBOL "o" INDICATES A SET MONUMENT WHICH IS A ONE-HALF (1/2) INCH DIAMETER STEEL BAR THIRTY SIX (36) INCHES LONG, ENCASED IN CONCRETE FOUR (4) INCHES IN DIAMETER.
- LOT CORNERS HAVE BEEN MARKED WITH STEEL BARS ONE-HALF (1/2) INCH IN DIAMETER, AND EIGHTEEN (18) INCHES IN LENGTH.
- (R) INDICATES A RADIAL LINE.
- (NR) INDICATES A NON RADIAL LINE.
- L INDICATES A RIGHT ANGLE.
- BEARINGS ARE IN RELATION TO THE TRUE MERIDIAN, AS DETERMINED BY POLARIS OBSERVATION, DATE 11/13/1984.
- DENOTES FOUND MONUMENT 1/2 INCH STEEL BAR ENCASED IN CONCRETE 4 INCHES IN DIAMETER.

THIS PLAT IS SUBJECT TO RESTRICTIONS AS  
REQUIRED BY ACT 288 OF 1967 AS AMENDED  
ON CERTAIN LOTS WITH RESPECT TO THE  
REQUIREMENTS OF THE MICHIGAN DEPARTMENT  
OF ENVIRONMENTAL QUALITY WHICH ARE  
RECORDED IN LIBER 2993, PAGES 06 50  
OF RECORDS OF THIS COUNTY.



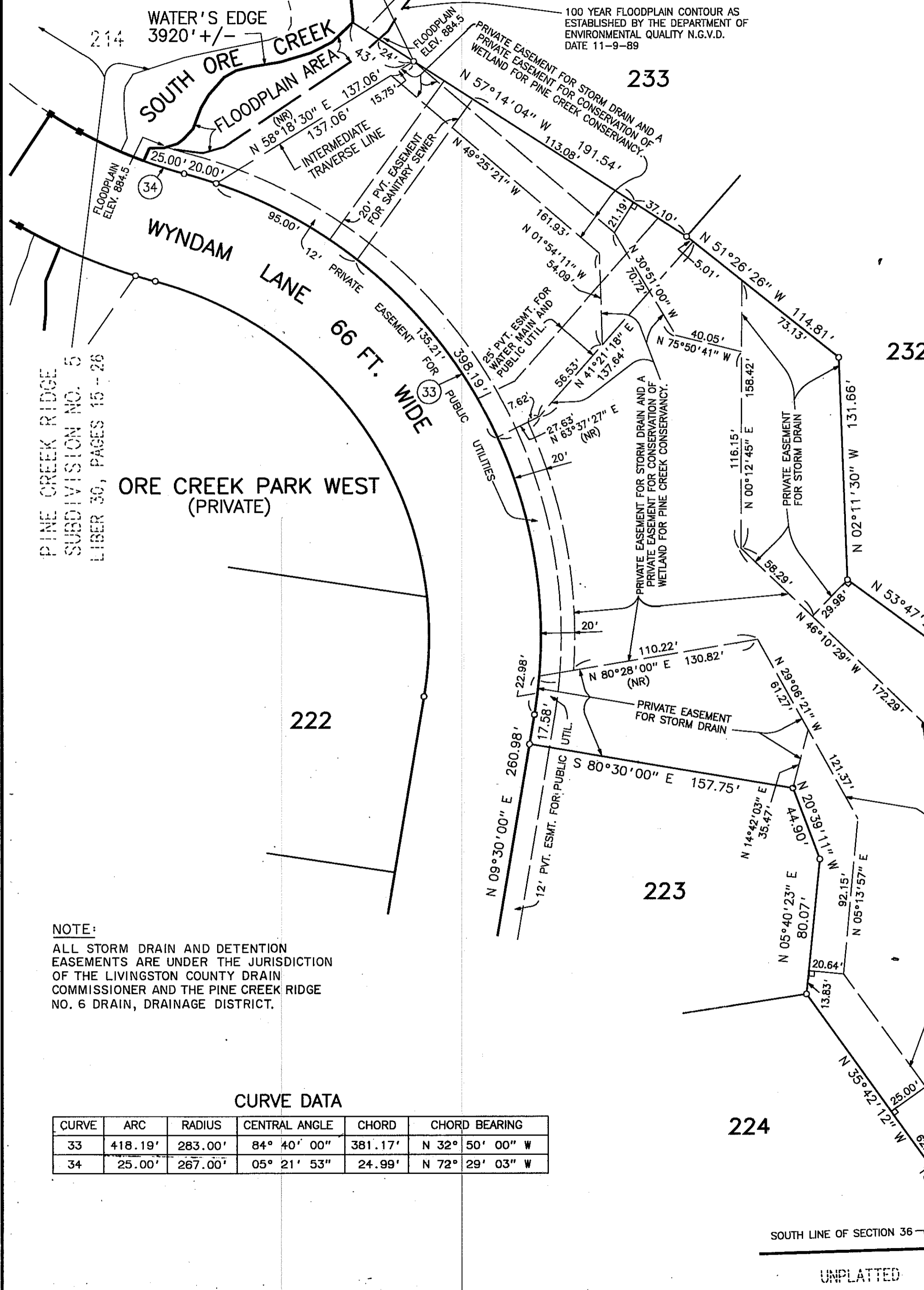
*Robert D. Kohn*

**Giffels-Webster Engineers Inc.**  
ENGINEERS - SURVEYORS - PLANNERS  
2871 BOND STREET ROCHESTER HILLS MICHIGAN  
(248) 852-3100

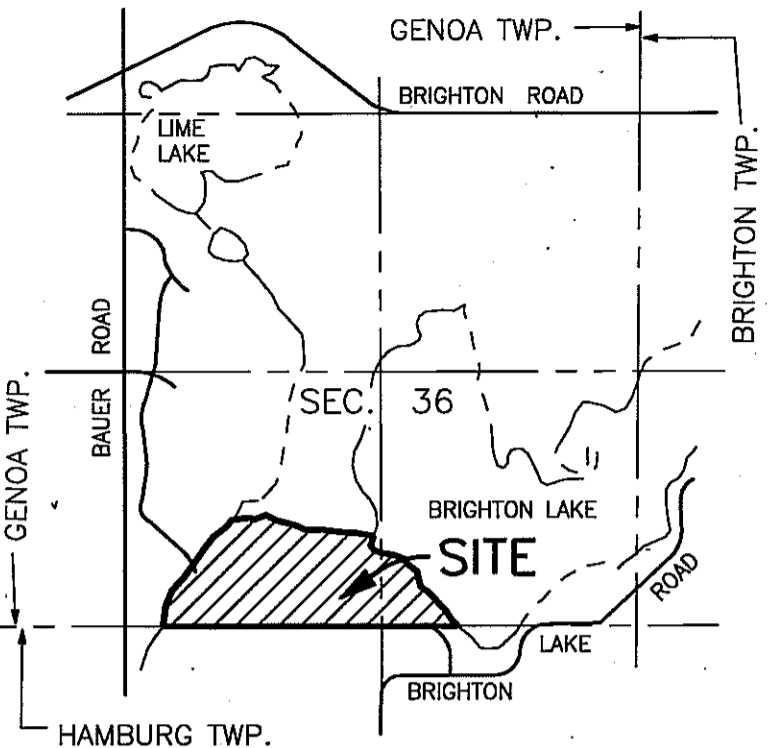
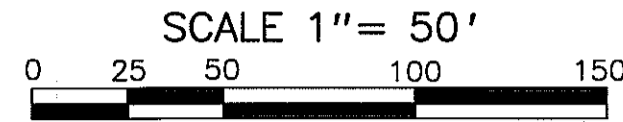
MATCH LINE SEE SHEET 5 OF 9  
MATCH LINE SEE SHEET 2 OF 9  
MATCH LINE SEE SHEET 3 OF 9  
MATCH LINE SEE SHEET 2 OF 9

# PINE CREEK RIDGE SUBDIVISION NO. 6

A PART OF THE SE. 1/4 AND SW. 1/4 OF SECTION 36, T-2-N, R-5-E,  
GENOA TOWNSHIP, LIVINGSTON COUNTY, MICHIGAN



## PARK DETAIL



THIS PLAT IS SUBJECT TO RESTRICTIONS AS REQUIRED BY ACT 288 OF 1967 AS AMENDED ON CERTAIN LOTS WITH RESPECT TO THE REQUIREMENTS OF THE MICHIGAN DEPARTMENT OF ENVIRONMENTAL QUALITY WHICH ARE RECORDED IN LIBER 2993, PAGES 0650 OF RECORDS OF THIS COUNTY.

LOCATION MAP  
SCALE 1" = 2000'

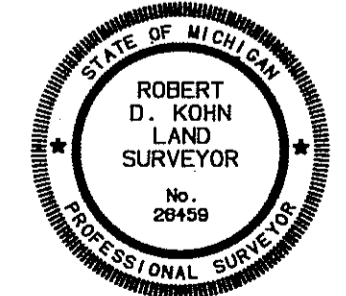
### LEGEND

1. ALL DIMENSIONS ARE GIVEN IN FEET.
2. CURVILINEAR MEASUREMENTS ARE ARC DISTANCES.
3. THE SYMBOL "o" INDICATES A SET MONUMENT WHICH IS A ONE-HALF (1/2) INCH DIAMETER STEEL BAR THIRTY SIX (36) INCHES LONG, ENCASED IN CONCRETE FOUR (4) INCHES IN DIAMETER.
4. LOT CORNERS HAVE BEEN MARKED WITH STEEL BARS ONE-HALF (1/2) INCH IN DIAMETER, AND EIGHTEEN (18) INCHES IN LENGTH.
5. (R) INDICATES A RADIAL LINE.
6. (NR) INDICATES A NON RADIAL LINE.
7. ∟ INDICATES A RIGHT ANGLE.
8. BEARINGS ARE IN RELATION TO THE TRUE MERIDIAN, AS DETERMINED BY POLARIS OBSERVATION, DATE 11/13/1984.
9. ■ DENOTES FOUND MONUMENT 1/2 INCH STEEL BAR ENCASED IN CONCRETE 4 INCHES IN DIAMETER.

NOTE:  
ALL STORM DRAIN AND DETENTION EASEMENTS ARE UNDER THE JURISDICTION OF THE LIVINGSTON COUNTY DRAIN COMMISSIONER AND THE PINE CREEK RIDGE NO. 6 DRAIN, DRAINAGE DISTRICT.

### CURVE DATA

CURVE	ARC	RADIUS	CENTRAL ANGLE	CHORD	CHORD BEARING
33	418.19'	283.00'	84° 40' 00"	381.17'	N 32° 50' 00" W
34	25.00'	267.00'	05° 21' 53"	24.99'	N 72° 29' 03" W



*Robert D. Kohn*

**Giffels-Webster Engineers Inc.**  
ENGINEERS - SURVEYORS - PLANNERS  
2871 BOND STREET ROCHESTER HILLS MICHIGAN  
(248) 852-3100