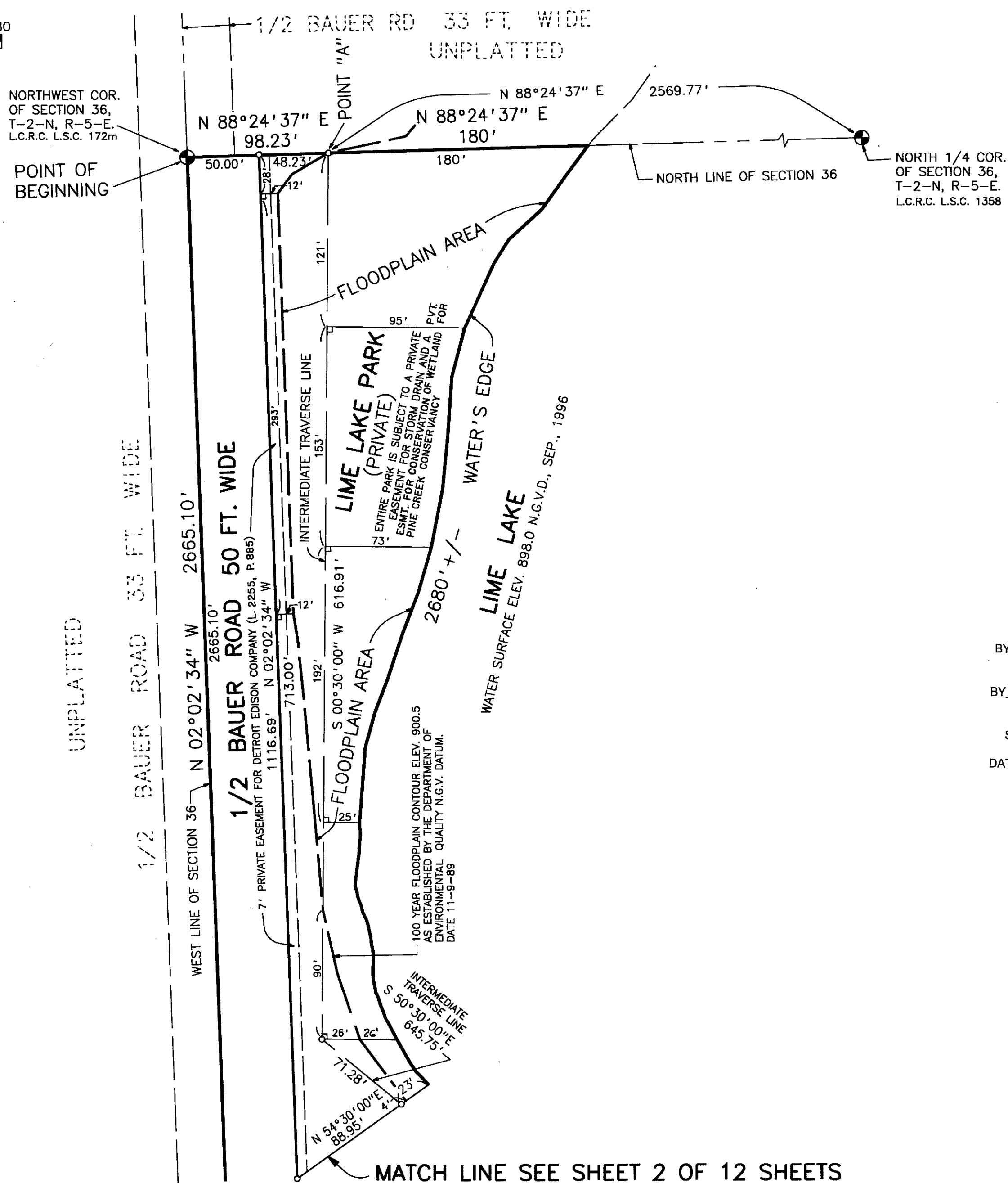
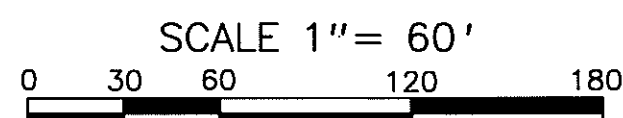
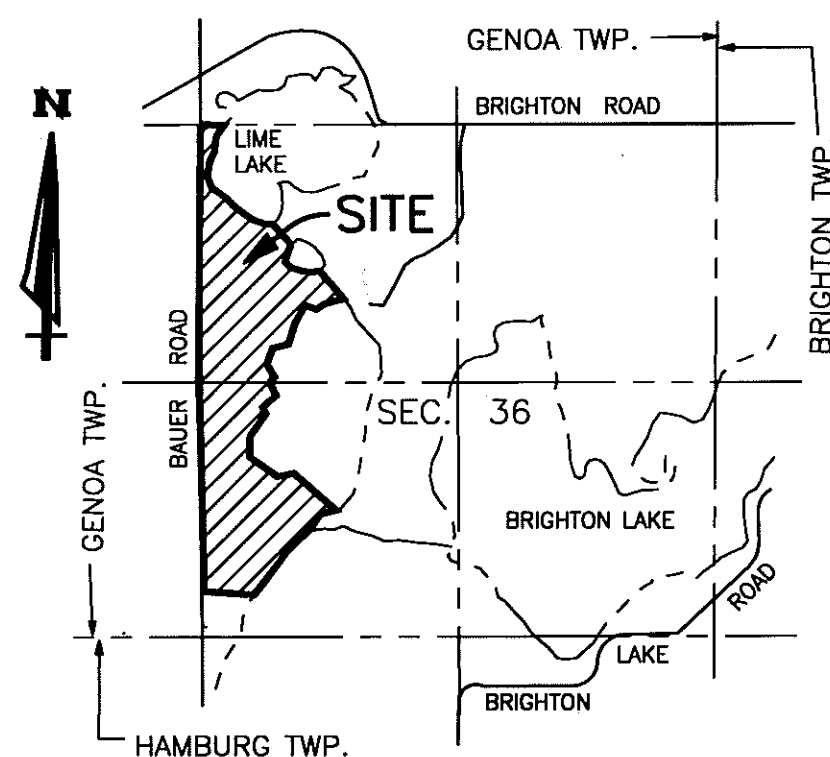


PINE CREEK RIDGE SUBDIVISION NO. 5

A PART OF THE NW. & SW. 1/4 OF SECTION 36, T-2-N, R-5-E,
GENOA TOWNSHIP, LIVINGSTON COUNTY, MICHIGAN



CERTIFIED TRUE COPY OF
RECORDED PLAT
BY DEPARTMENT OF CONSUMER
AND INDUSTRY SERVICES
BY Maynard R. Dyer
MAYNARD R. DYER, P.S.
MANAGER
SUBDIVISION CONTROL UNIT
DATE 6-5-98



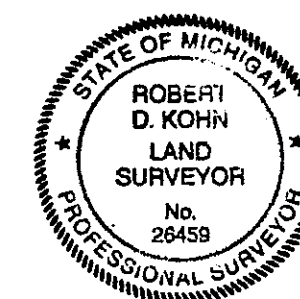
LOCATION MAP

SCALE 1" = 2000'

LEGEND

1. ALL DIMENSIONS ARE GIVEN IN FEET.
2. CURVILINEAR MEASUREMENTS ARE ARC DISTANCES.
3. CONCRETE MONUMENTS HAVE BEEN PLACED AT ALL POINTS MARKED "O".
4. CONCRETE MONUMENTS ARE STEEL BARS ONE-HALF (1/2) INCH IN DIAMETER AND THIRTY SIX (36) INCHES IN LENGTH, ENCASED IN A CONCRETE CYLINDER FOUR (4) INCHES IN DIAMETER, AND THIRTY SIX (36) INCHES IN LENGTH.
5. LOT CORNERS HAVE BEEN MARKED WITH STEEL BARS ONE-HALF (1/2) INCH IN DIAMETER, AND EIGHTEEN (18) INCHES IN LENGTH.
6. (R) INDICATES A RADIAL LINE.
7. (NR) INDICATES A NON RADIAL LINE.
8. ⊥ INDICATES A RIGHT ANGLE.
9. BEARINGS ARE IN RELATION TO THE TRUE MERIDIAN, AS DETERMINED BY POLARIS OBSERVATION, DATE 11/13/1984.
10. ■ DENOTES FOUND MONUMENT 1/2 INCH STEEL BAR ENCASED IN CONCRETE 4 INCHES IN DIAMETER.

THIS PLAT IS SUBJECT TO RESTRICTIONS AS REQUIRED BY ACT 288 OF 1967 AS AMENDED ON CERTAIN LOTS WITH RESPECT TO THE REQUIREMENTS OF THE MICHIGAN DEPARTMENT OF ENVIRONMENTAL QUALITY WHICH ARE RECORDED IN LIBER 2345, PAGES 691-739 OF RECORDS OF THIS COUNTY.



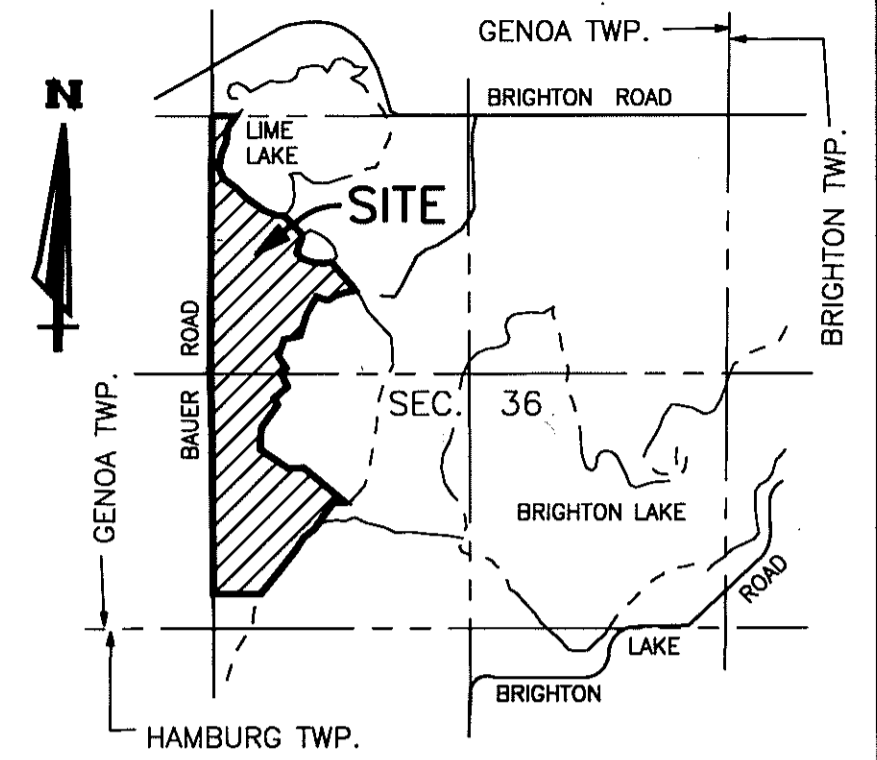
Robert D. Kohn

Giffels-Webster Engineers Inc.
ENGINEERS - SURVEYORS - PLANNERS
2871 BOND STREET ROCHESTER HILLS MICHIGAN
(248) 852-3100

MATCH LINE SEE SHEET 2 OF 12 SHEETS

PINE CREEK RIDGE SUBDIVISION NO. 5

A PART OF THE NW. & SW. 1/4 OF SECTION 36, T-2-N, R-5-E,
GENOA TOWNSHIP, LIVINGSTON COUNTY, MICHIGAN

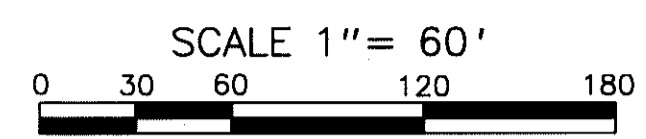
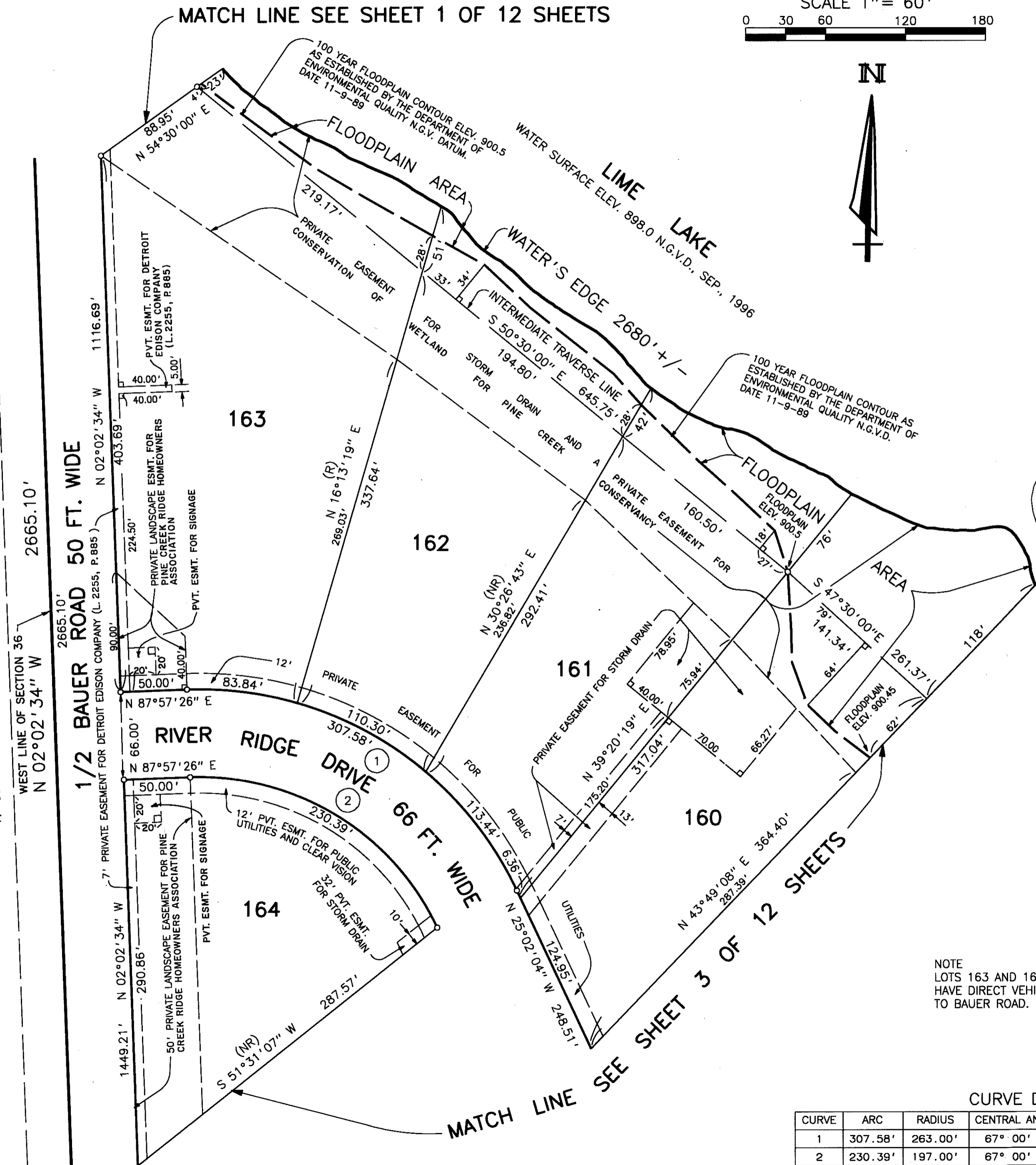


LOCATION MAP

SCALE 1" = 2000'

UNPLATTED

1/2 BAUER ROAD 33 FT. WIDE

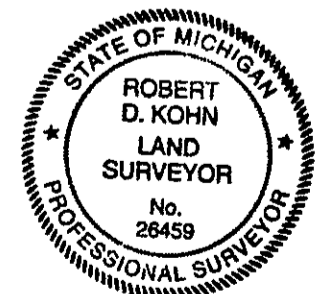


LEGEND

1. ALL DIMENSIONS ARE GIVEN IN FEET.
2. CURVILINEAR MEASUREMENTS ARE ARC DISTANCES.
3. CONCRETE MONUMENTS HAVE BEEN PLACED AT ALL POINTS MARKED "O".
4. CONCRETE MONUMENTS ARE STEEL BARS ONE-HALF (1/2) INCH IN DIAMETER AND THIRTY SIX (36) INCHES IN LENGTH, ENCASED IN A CONCRETE CYLINDER FOUR (4) INCHES IN DIAMETER, AND THIRTY SIX (36) INCHES IN LENGTH.
5. LOT CORNERS HAVE BEEN MARKED WITH STEEL BARS ONE-HALF (1/2) INCH IN DIAMETER, AND EIGHTEEN (18) INCHES IN LENGTH.
6. (R) INDICATES A RADIAL LINE.
7. (NR) INDICATES A NON RADIAL LINE.
8. L INDICATES A RIGHT ANGLE.
9. BEARINGS ARE IN RELATION TO THE TRUE MERIDIAN, AS DETERMINED BY POLARIS OBSERVATION, DATE 11/13/1984.
10. ■ DENOTES FOUND MONUMENT 1/2 INCH STEEL BAR ENCASED IN CONCRETE 4 INCHES IN DIAMETER.

THIS PLAT IS SUBJECT TO RESTRICTIONS AS REQUIRED BY ACT 288 OF 1967 AS AMENDED ON CERTAIN LOTS WITH RESPECT TO THE REQUIREMENTS OF THE MICHIGAN DEPARTMENT OF ENVIRONMENTAL QUALITY WHICH ARE RECORDED IN LIBER 2345, PAGES 691-739 OF RECORDS OF THIS COUNTY.

NOTE
LOTS 163 AND 164 SHALL NOT
HAVE DIRECT VEHICULAR ACCESS
TO BAUER ROAD.



Robert D. Kohn

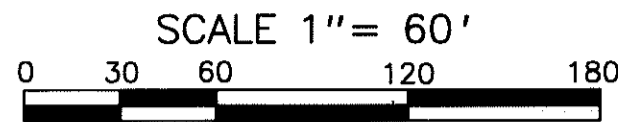
CURVE DATA

CURVE	ARC	RADIUS	CENTRAL ANGLE	CHORD	CHORD BEARING
1	307.58'	263.00'	67° 00' 30"	290.35'	N 58° 32' 19" W
2	230.39'	197.00'	67° 00' 30"	217.49'	N 58° 32' 19" W

Giffels-Webster Engineers Inc.
ENGINEERS - SURVEYORS - PLANNERS
2871 BOND STREET ROCHESTER HILLS MICHIGAN
(248) 852-3100

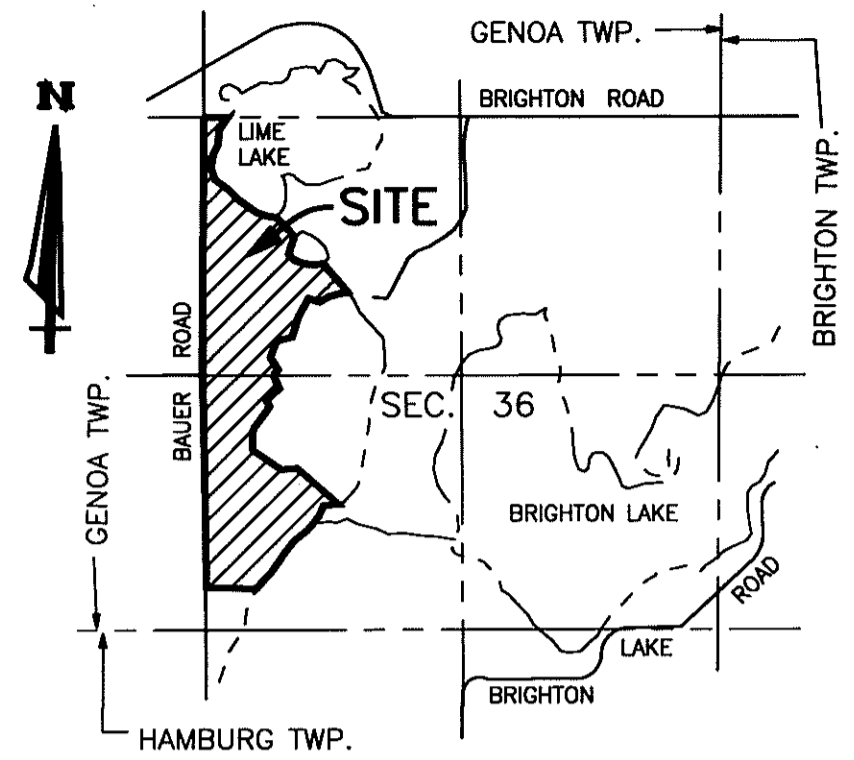
PINE CREEK RIDGE SUBDIVISION NO. 5

A PART OF THE NW. & SW. 1/4 OF SECTION 36, T-2-N, R-5-E,
GENOA TOWNSHIP, LIVINGSTON COUNTY, MICHIGAN



CURVE DATA

CURVE	ARC	RADIUS	CENTRAL ANGLE	CHORD	CHORD BEARING
3	119.13'	533.00'	12° 48' 22"	118.88'	N 31° 26' 15" W
4	29.32'	20.00'	84° 00' 03"	26.76'	N 04° 09' 36" E
5	211.64'	467.00'	25° 57' 56"	209.83'	N 38° 01' 02" W
6	29.71'	20.00'	85° 07' 03"	27.05'	N 88° 36' 03" E
7	20.09'	533.00'	02° 09' 34"	20.09'	N 49° 55' 13" W
12	441.70'	467.00'	54° 11' 28"	425.42'	N 18° 56' 47" E
13	505.22'	533.00'	54° 18' 35"	486.52'	N 19° 00' 20" E

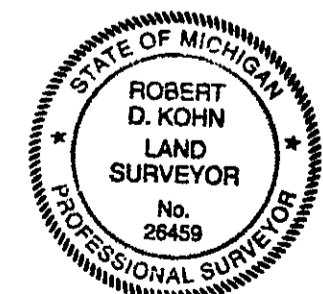


LOCATION MAP
SCALE 1" = 2000'

LEGEND

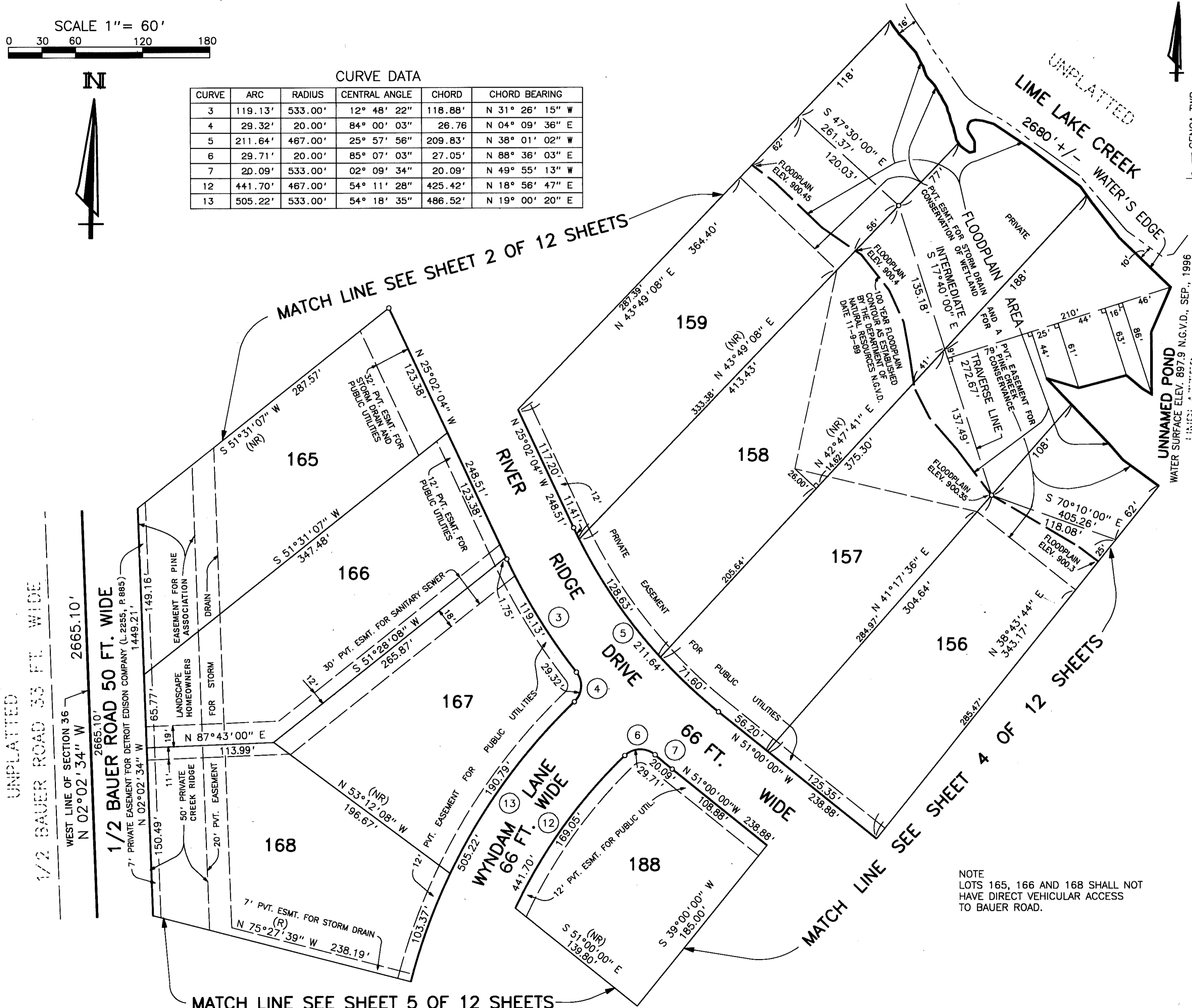
- ALL DIMENSIONS ARE GIVEN IN FEET.
- CURVILINEAR MEASUREMENTS ARE ARC DISTANCES.
- CONCRETE MONUMENTS HAVE BEEN PLACED AT ALL POINTS MARKED "o".
- CONCRETE MONUMENTS ARE STEEL BARS ONE-HALF (1/2) INCH IN DIAMETER AND THIRTY SIX (36) INCHES IN LENGTH, ENCASED IN A CONCRETE CYLINDER FOUR (4) INCHES IN DIAMETER, AND THIRTY SIX (36) INCHES IN LENGTH.
- LOT CORNERS HAVE BEEN MARKED WITH STEEL BARS ONE-HALF (1/2) INCH IN DIAMETER, AND EIGHTEEN (18) INCHES IN LENGTH.
- (R) INDICATES A RADIAL LINE.
- (NR) INDICATES A NON RADIAL LINE.
- ⊥ INDICATES A RIGHT ANGLE.
- BEARINGS ARE IN RELATION TO THE TRUE MERIDIAN, AS DETERMINED BY POLARIS OBSERVATION, DATE 11/13/1984.
- DENOTES FOUND MONUMENT 1/2 INCH STEEL BAR ENCASED IN CONCRETE 4 INCHES IN DIAMETER.

THIS PLAT IS SUBJECT TO RESTRICTIONS AS REQUIRED BY ACT 288 OF 1967 AS AMENDED ON CERTAIN LOTS WITH RESPECT TO THE REQUIREMENTS OF THE MICHIGAN DEPARTMENT OF ENVIRONMENTAL QUALITY WHICH ARE RECORDED IN LIBER 2345, PAGES 691-737 OF RECORDS OF THIS COUNTY.



Robert D. Kohn

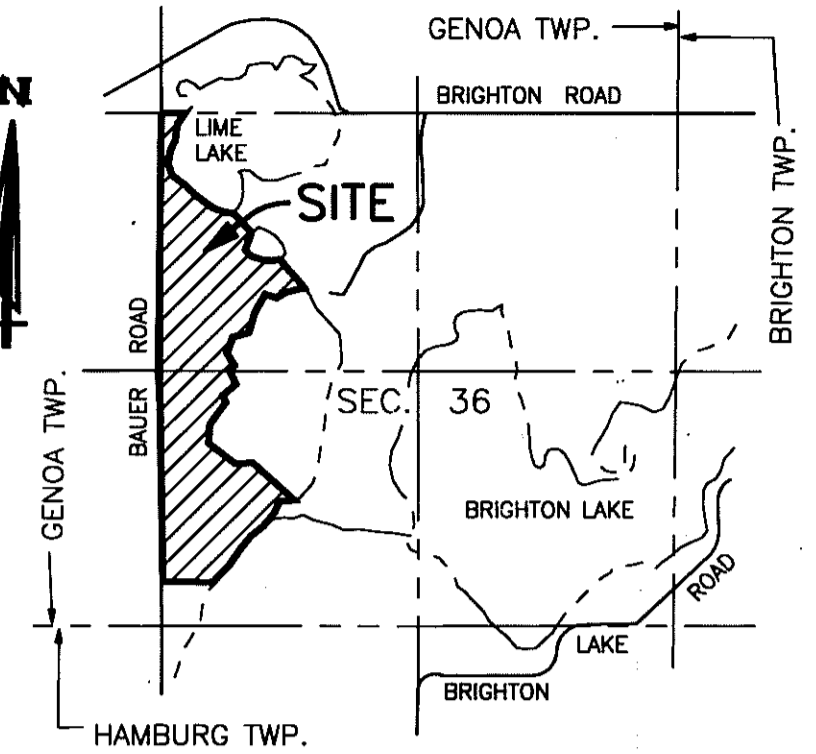
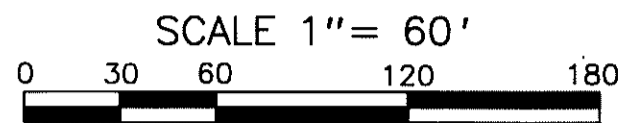
Giffels-Webster Engineers Inc.
ENGINEERS - SURVEYORS - PLANNERS
2871 BOND STREET ROCHESTER HILLS MICHIGAN
(248) 852-3100



NOTE
LOTS 165, 166 AND 168 SHALL NOT
HAVE DIRECT VEHICULAR ACCESS
TO BAUER ROAD.

PINE CREEK RIDGE SUBDIVISION NO. 5

A PART OF THE NW. & SW. 1/4 OF SECTION 36, T-2-N, R-5-E,
GENOA TOWNSHIP, LIVINGSTON COUNTY, MICHIGAN



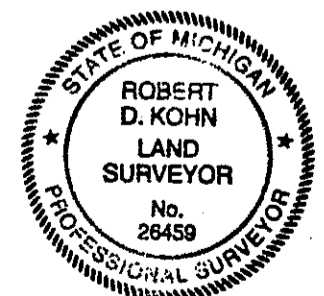
LOCATION MAP

SCALE 1" = 2000'

LEGEND

1. ALL DIMENSIONS ARE GIVEN IN FEET.
2. CURVILINEAR MEASUREMENTS ARE ARC DISTANCES.
3. CONCRETE MONUMENTS HAVE BEEN PLACED AT ALL POINTS MARKED "O".
4. CONCRETE MONUMENTS ARE STEEL BARS ONE-HALF (1/2) INCH IN DIAMETER AND THIRTY SIX (36) INCHES IN LENGTH, ENCASED IN A CONCRETE CYLINDER FOUR (4) INCHES IN DIAMETER, AND THIRTY SIX (36) INCHES IN LENGTH.
5. LOT CORNERS HAVE BEEN MARKED WITH STEEL BARS ONE-HALF (1/2) INCH IN DIAMETER, AND EIGHTEEN (18) INCHES IN LENGTH.
6. (R) INDICATES A RADIAL LINE.
7. (NR) INDICATES A NON RADIAL LINE.
8. \perp INDICATES A RIGHT ANGLE.
9. BEARINGS ARE IN RELATION TO THE TRUE MERIDIAN, AS DETERMINED BY POLARIS OBSERVATION, DATE 11/13/1984.
10. \blacksquare DENOTES FOUND MONUMENT 1/2 INCH STEEL BAR ENCASED IN CONCRETE 4 INCHES IN DIAMETER.

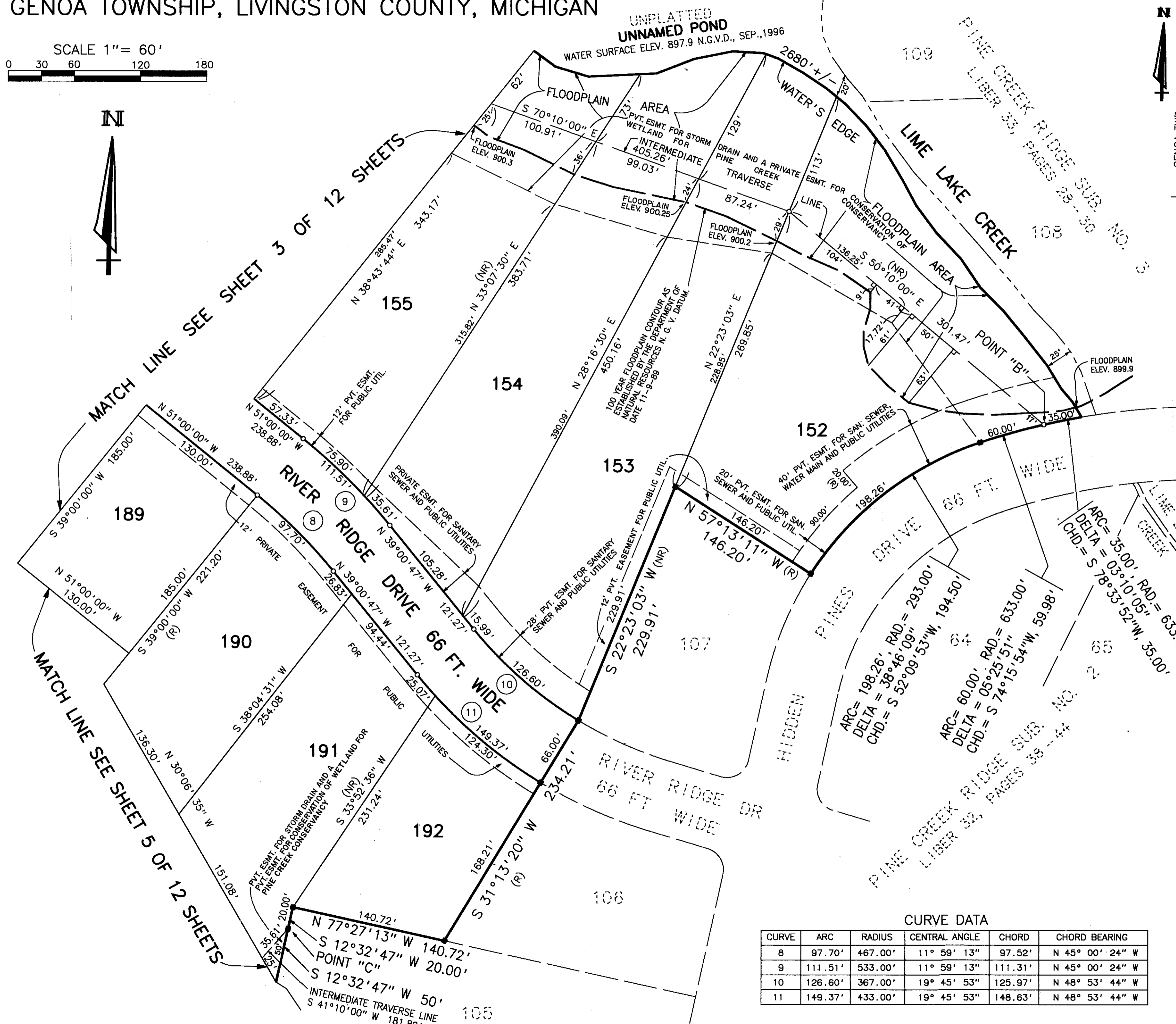
THIS PLAT IS SUBJECT TO RESTRICTIONS AS REQUIRED BY ACT 288 OF 1967 AS AMENDED ON CERTAIN LOTS WITH RESPECT TO THE REQUIREMENTS OF THE MICHIGAN DEPARTMENT OF ENVIRONMENTAL QUALITY WHICH ARE RECORDED IN LIBER 2345, PAGES 691-739 OF RECORDS OF THIS COUNTY.



Robert D. Kohn

Giffels-Webster Engineers Inc.

ENGINEERS - SURVEYORS - PLANNERS
2871 BOND STREET ROCHESTER HILLS MICHIGAN
(248) 852-3100



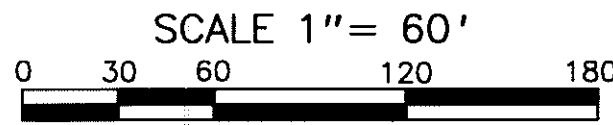
CURVE DATA

CURVE	ARC	RADIUS	CENTRAL ANGLE	CHORD	CHORD BEARING
8	97.70'	467.00'	11° 59' 13"	97.52'	N 45° 00' 24" W
9	111.51'	533.00'	11° 59' 13"	111.31'	N 45° 00' 24" W
10	126.60'	367.00'	19° 45' 53"	125.97'	N 48° 53' 44" W
11	149.37'	433.00'	19° 45' 53"	148.63'	N 48° 53' 44" W

PINE CREEK RIDGE SUBDIVISION NO. 5

A PART OF THE NW. & SW. 1/4 OF SECTION 36, T-2-N, R-5-E,
GENOA TOWNSHIP, LIVINGSTON COUNTY, MICHIGAN

LIBER PAGE
SHEET 5 OF 12 SHEETS

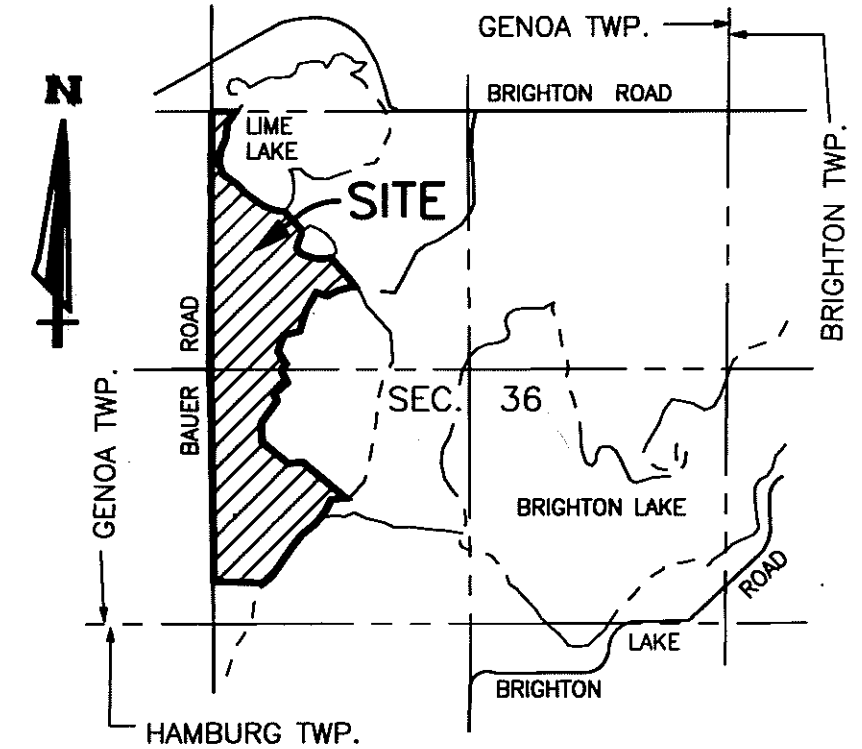


NOTE
LOTS 169 THROUGH 173 SHALL NOT
HAVE DIRECT VEHICULAR ACCESS
TO BAUER ROAD.



CURVE DATA

CURVE	ARC	RADIUS	CENTRAL ANGLE	CHORD	CHORD BEARING
12	441.70'	467.00'	54° 11' 28"	425.42'	N 18° 56' 47" E
13	505.22'	533.00'	54° 18' 35"	486.52'	N 19° 00' 20" E
14	167.20'	417.00'	22° 58' 25"	166.08'	N 03° 20' 15" E
15	192.32'	483.00'	22° 48' 50"	191.05'	N 03° 15' 28" E



LOCATION MAP

SCALE 1" = 2000'

LEGEND

- ALL DIMENSIONS ARE GIVEN IN FEET.
- CURVILINEAR MEASUREMENTS ARE ARC DISTANCES.
- CONCRETE MONUMENTS HAVE BEEN PLACED AT ALL POINTS MARKED "O".
- CONCRETE MONUMENTS ARE STEEL BARS ONE-HALF (1/2) INCH IN DIAMETER AND THIRTY SIX (36) INCHES IN LENGTH, ENCASED IN A CONCRETE CYLINDER FOUR (4) INCHES IN DIAMETER, AND THIRTY SIX (36) INCHES IN LENGTH.
- LOT CORNERS HAVE BEEN MARKED WITH STEEL BARS ONE-HALF (1/2) INCH IN DIAMETER, AND EIGHTEEN (18) INCHES IN LENGTH.
- (R) INDICATES A RADIAL LINE.
- (NR) INDICATES A NON RADIAL LINE.
- ⊥ INDICATES A RIGHT ANGLE.
- BEARINGS ARE IN RELATION TO THE TRUE MERIDIAN, AS DETERMINED BY POLARIS OBSERVATION, DATE 11/13/1984.
- DENOTES FOUND MONUMENT 1/2 INCH STEEL BAR ENCASED IN CONCRETE 4 INCHES IN DIAMETER.

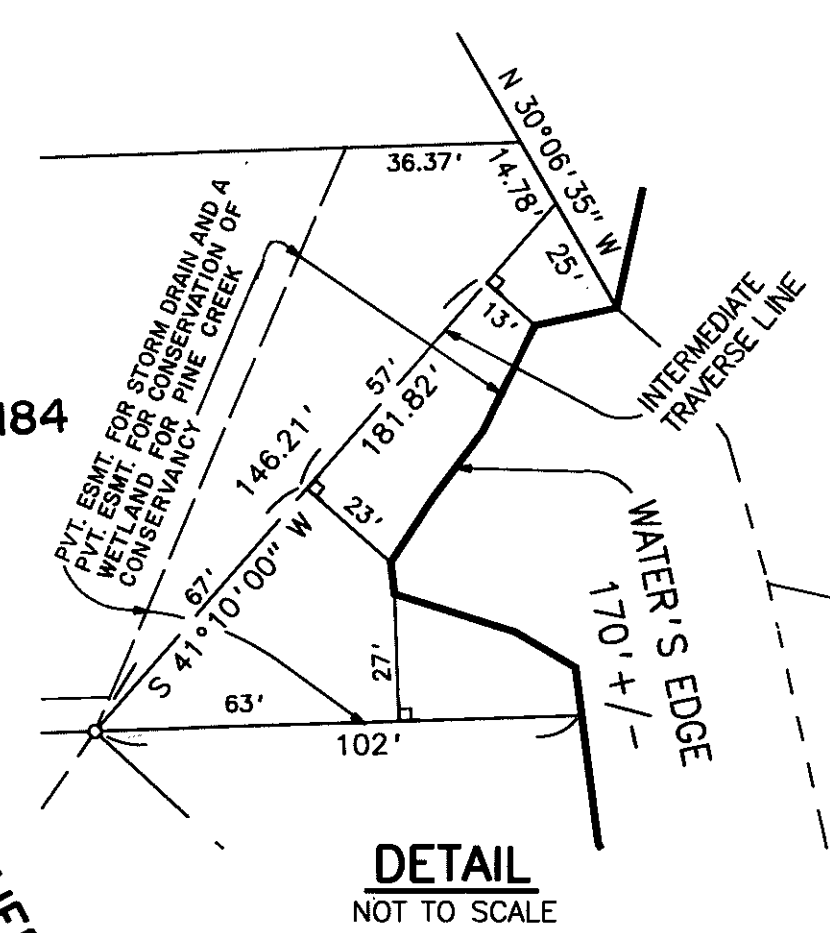
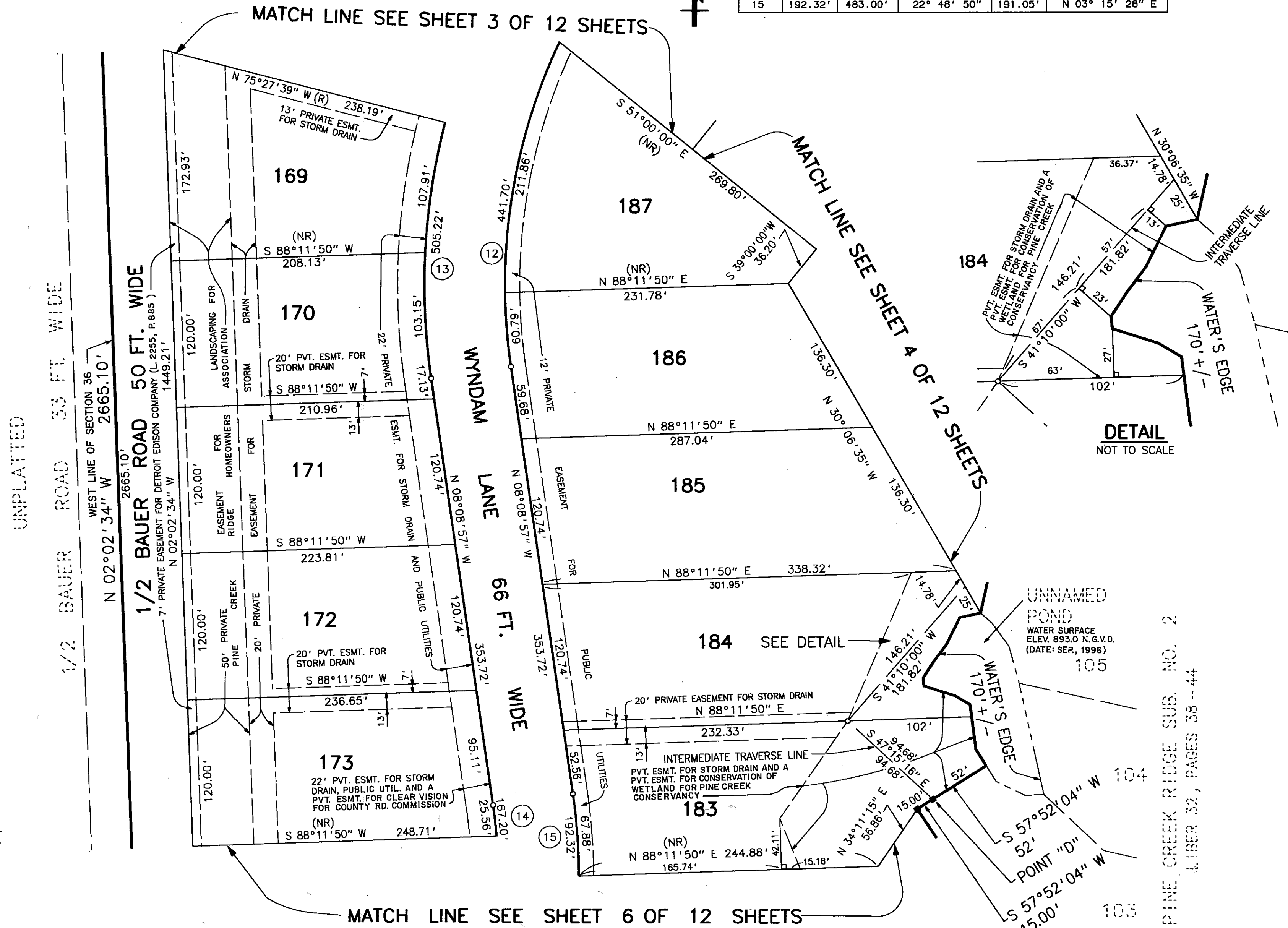
THIS PLAT IS SUBJECT TO RESTRICTIONS AS
REQUIRED BY ACT 288 OF 1967 AS AMENDED
ON CERTAIN LOTS WITH RESPECT TO THE
REQUIREMENTS OF THE MICHIGAN DEPARTMENT
OF ENVIRONMENTAL QUALITY WHICH ARE
RECORDED IN LIBER 3345, PAGES 691-739
OF RECORDS OF THIS COUNTY.



Robert D. Kohn

Giffels-Webster Engineers Inc.

ENGINEERS - SURVEYORS - PLANNERS
2871 BOND STREET ROCHESTER HILLS MICHIGAN
(248) 852-3100

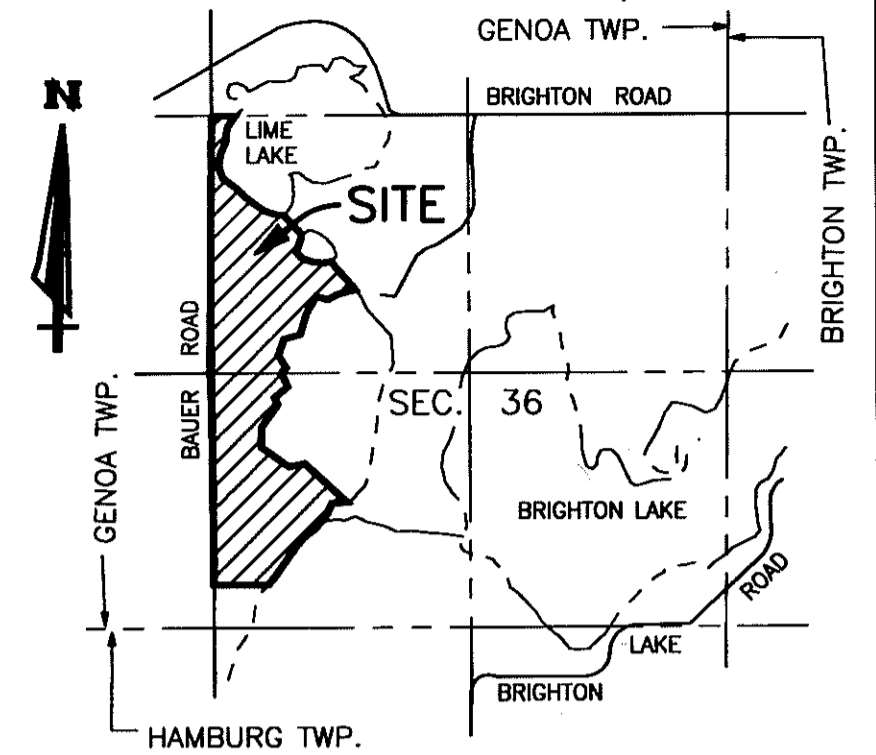
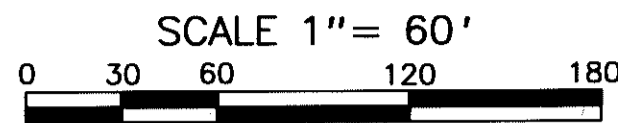


DETAIL
NOT TO SCALE

PINE CREEK RIDGE SUB. NO. 2
LIBER 32, PAGES 38-44

PINE CREEK RIDGE SUBDIVISION NO. 5

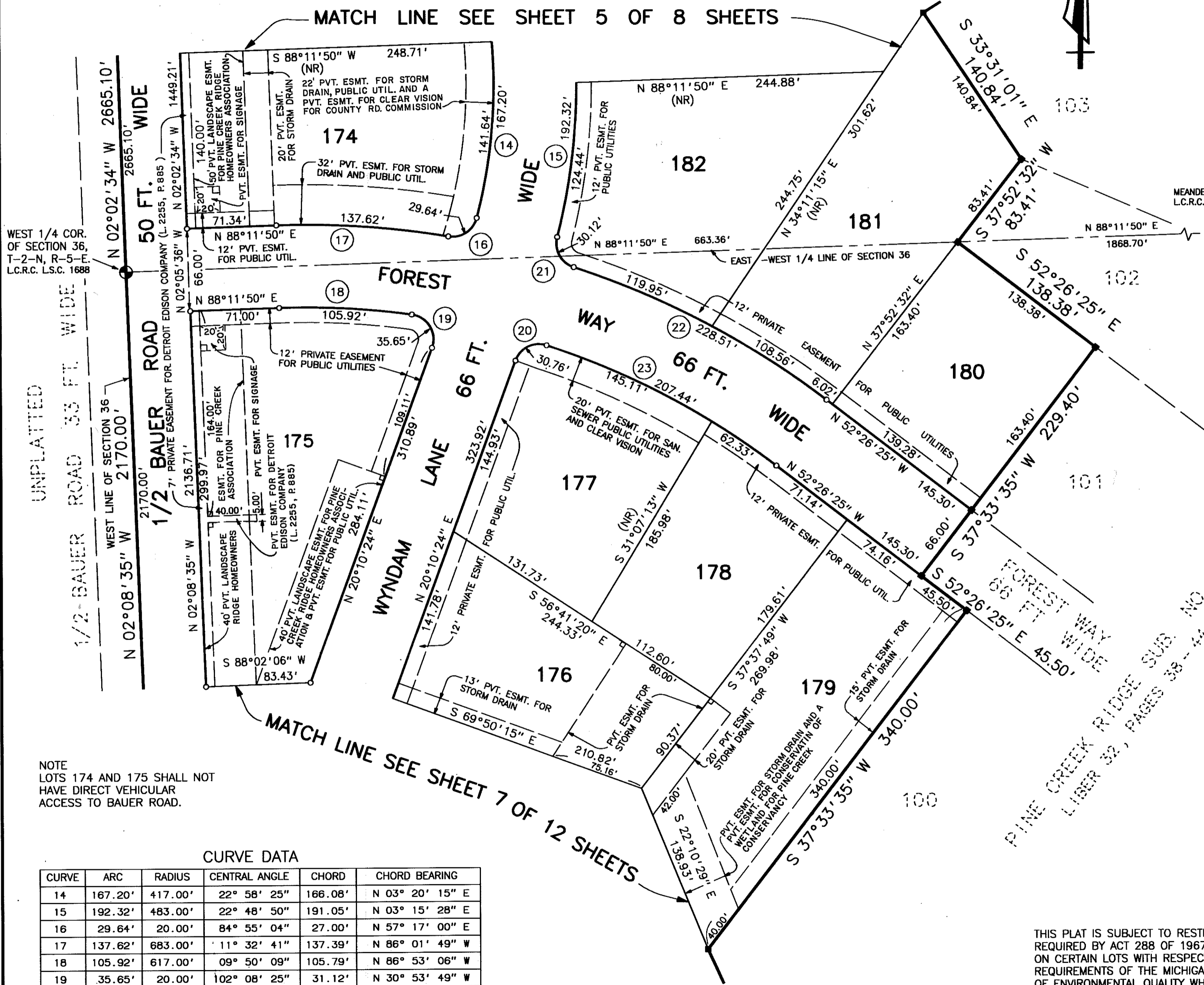
A PART OF THE NW. & SW. 1/4 OF SECTION 36, T-2-N, R-5-E,
GENOA TOWNSHIP, LIVINGSTON COUNTY, MICHIGAN



LOCATION MAP

SCALE 1" = 2000'

CENTER OF SECTION 36, T-2-N, R-5-E. (NOT SET - IN LAKE)



WEST 1/4 COR. OF SECTION 36, T-2-N, R-5-E. L.C.R.C. L.S.C. 1688

MEANDER CORNER L.C.R.C. L.S.C. 1688

UNPLATTED

MATCH LINE SEE SHEET 7 OF 12 SHEETS

NOTE
LOTS 174 AND 175 SHALL NOT
HAVE DIRECT VEHICULAR
ACCESS TO BAUER ROAD.

CURVE DATA

CURVE	ARC	RADIUS	CENTRAL ANGLE	CHORD	CHORD BEARING
14	167.20'	417.00'	22° 58' 25"	166.08'	N 03° 20' 15" E
15	192.32'	483.00'	22° 48' 50"	191.05'	N 03° 15' 28" E
16	29.64'	20.00'	84° 55' 04"	27.00'	N 57° 17' 00" E
17	137.62'	683.00'	11° 32' 41"	137.39'	N 86° 01' 49" W
18	105.92'	617.00'	09° 50' 09"	105.79'	N 86° 53' 06" W
19	35.65'	20.00'	102° 08' 25"	31.12'	N 30° 53' 49" W
20	30.76'	20.00'	88° 07' 23"	27.82'	N 64° 14' 05" E
21	30.12'	20.00'	86° 16' 28"	27.35'	N 28° 28' 22" W
22	228.51'	683.00'	19° 10' 11"	227.45'	N 62° 01' 31" W
23	207.44'	617.00'	19° 15' 48"	206.46'	N 62° 04' 19" W



Robert D. Kohn

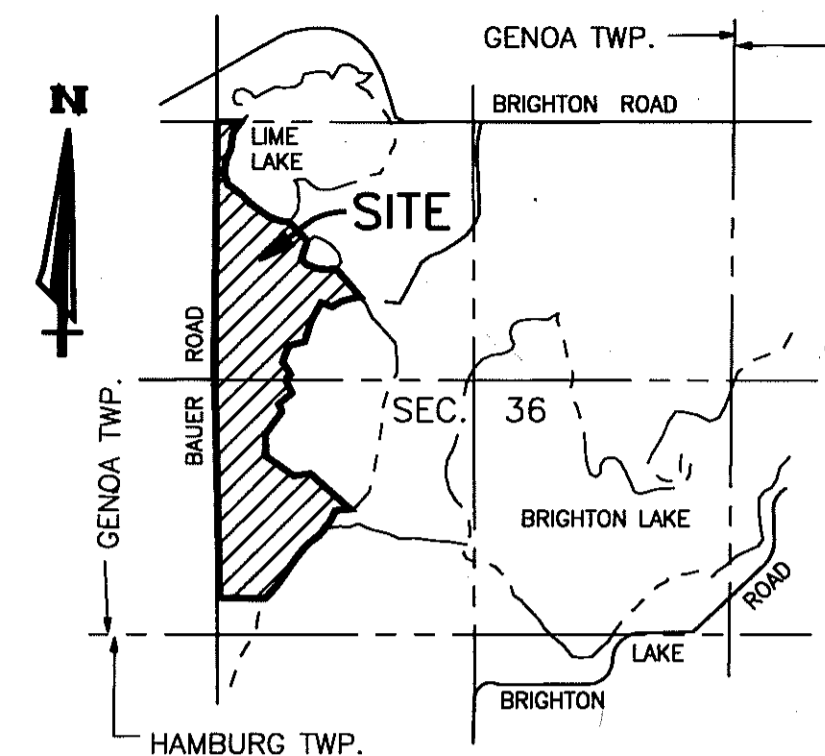
THIS PLAT IS SUBJECT TO RESTRICTIONS AS
REQUIRED BY ACT 288 OF 1967 AS AMENDED
ON CERTAIN LOTS WITH RESPECT TO THE
REQUIREMENTS OF THE MICHIGAN DEPARTMENT
OF ENVIRONMENTAL QUALITY WHICH ARE
RECORDED IN LIBER 2345, PAGES 691-739
OF RECORDS OF THIS COUNTY.

Giffels-Webster Engineers Inc.
ENGINEERS - SURVEYORS - PLANNERS
2871 BOND STREET ROCHESTER HILLS MICHIGAN
(248) 852-3100

PINE CREEK RIDGE SUBDIVISION NO. 5

A PART OF THE NW. & SW. 1/4 OF SECTION 36, T-2-N, R-5-E,
GENOA TOWNSHIP, LIVINGSTON COUNTY, MICHIGAN

LIBER PAGE
SHEET 7 OF 12 SHEETS



LOCATION MAP

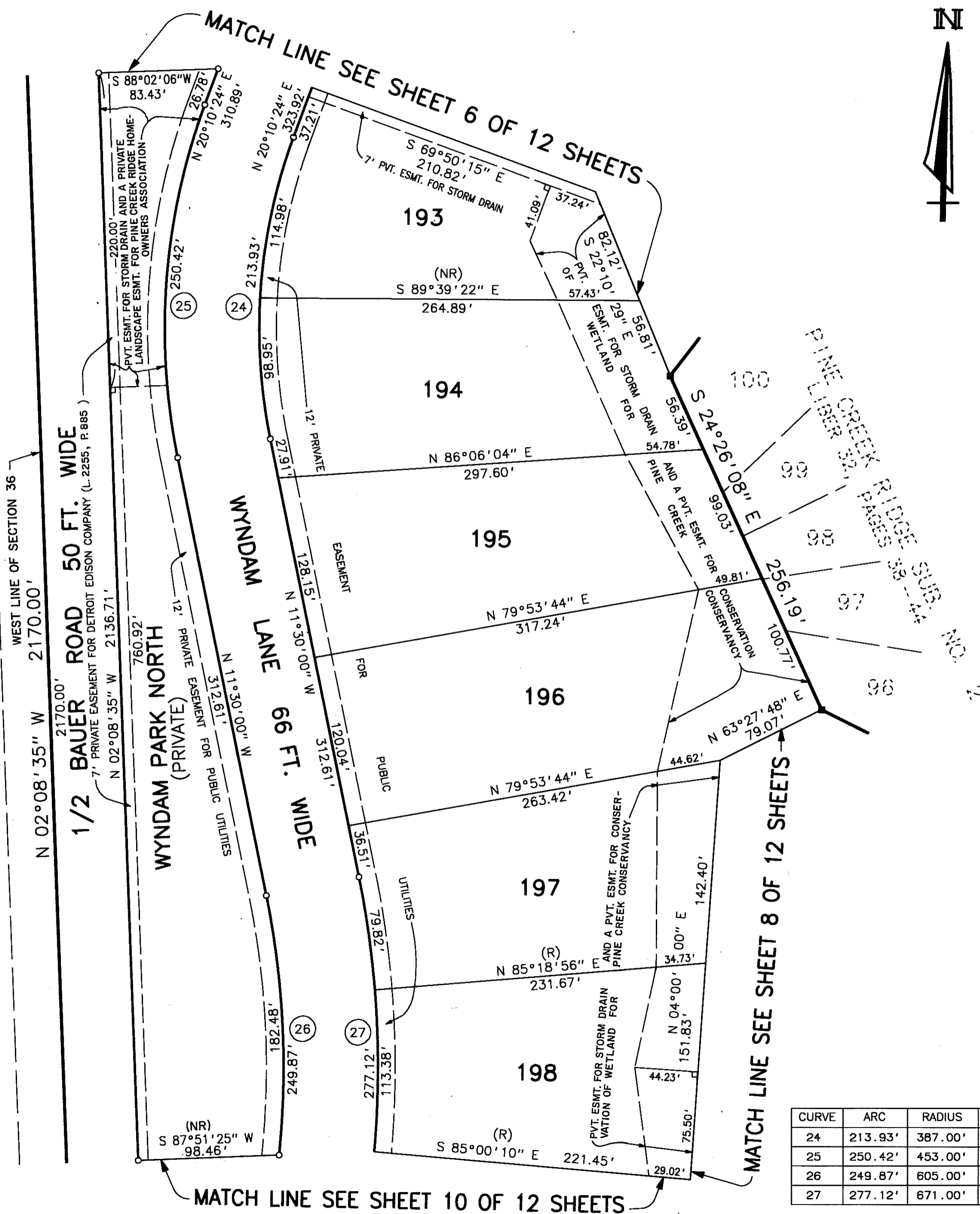
SCALE 1" = 2000'

SCALE 1" = 60'



UNPLATTED

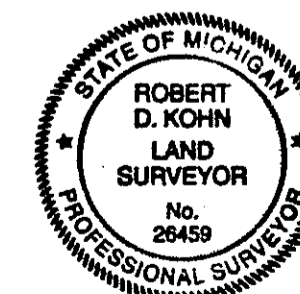
1/2 BAUER ROAD 33 FT WIDE



LEGEND

1. ALL DIMENSIONS ARE GIVEN IN FEET.
2. CURVILINEAR MEASUREMENTS ARE ARC DISTANCES.
3. CONCRETE MONUMENTS HAVE BEEN PLACED AT ALL POINTS MARKED "o".
4. CONCRETE MONUMENTS ARE STEEL BARS ONE-HALF (1/2) INCH IN DIAMETER AND THIRTY SIX (36) INCHES IN LENGTH, ENCASED IN A CONCRETE CYLINDER FOUR (4) INCHES IN DIAMETER, AND THIRTY SIX (36) INCHES IN LENGTH.
5. LOT CORNERS HAVE BEEN MARKED WITH STEEL BARS ONE-HALF (1/2) INCH IN DIAMETER, AND EIGHTEEN (18) INCHES IN LENGTH.
6. (R) INDICATES A RADIAL LINE.
7. (NR) INDICATES A NON RADIAL LINE.
8. ⊥ INDICATES A RIGHT ANGLE.
9. BEARINGS ARE IN RELATION TO THE TRUE MERIDIAN, AS DETERMINED BY POLARIS OBSERVATION, DATE 11/13/1984.
10. ■ DENOTES FOUND MONUMENT 1/2 INCH STEEL BAR ENCASED IN CONCRETE 4 INCHES IN DIAMETER.

THIS PLAT IS SUBJECT TO RESTRICTIONS AS REQUIRED BY ACT 288 OF 1967 AS AMENDED ON CERTAIN LOTS WITH RESPECT TO THE REQUIREMENTS OF THE MICHIGAN DEPARTMENT OF ENVIRONMENTAL QUALITY WHICH ARE RECORDED IN LIBER 2345, PAGES 691-739 OF RECORDS OF THIS COUNTY.



Robert D. Kohn

CURVE DATA

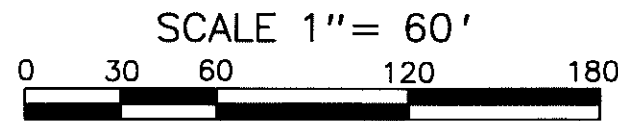
CURVE	ARC	RADIUS	CENTRAL ANGLE	CHORD	CHORD BEARING
24	213.93'	387.00'	31° 40' 24"	211.22'	N 04° 20' 12" E
25	250.42'	453.00'	31° 40' 24"	247.24'	N 04° 20' 12" E
26	249.87'	605.00'	23° 39' 48"	248.09'	N 00° 19' 54" E
27	277.12'	671.00'	23° 39' 48"	275.16'	N 00° 19' 54" E

Giffels-Webster Engineers Inc.

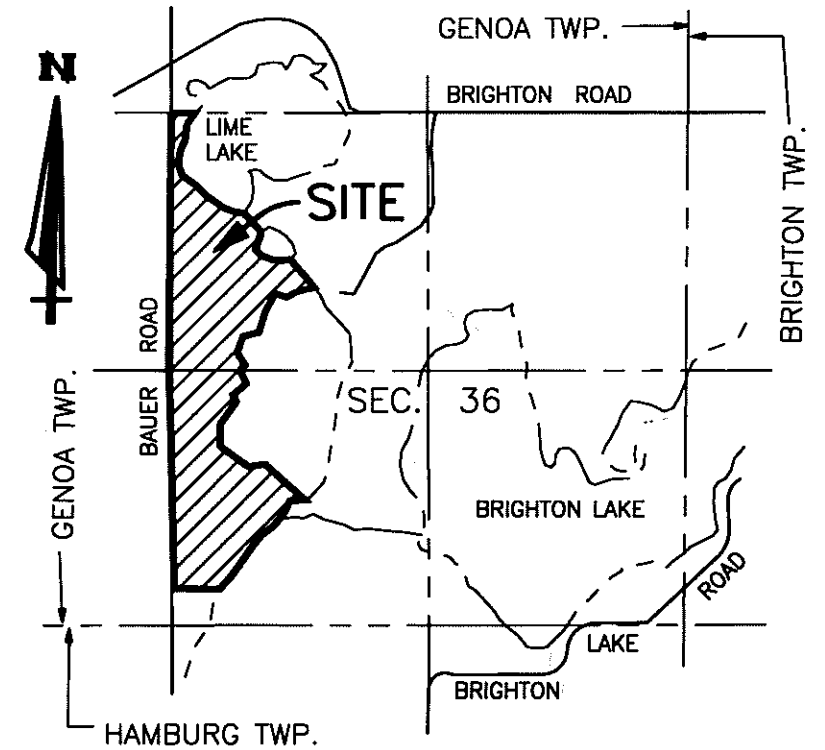
ENGINEERS - SURVEYORS - PLANNERS
2871 BOND STREET ROCHESTER HILLS MICHIGAN
(248) 852-3100

PINE CREEK RIDGE SUBDIVISION NO. 5

A PART OF THE NW. & SW. 1/4 OF SECTION 36, T-2-N, R-5-E,
GENOA TOWNSHIP, LIVINGSTON COUNTY, MICHIGAN



CURVE DATA					
CURVE	ARC	RADIUS	CENTRAL ANGLE	CHORD	CHORD BEARING
38	277.36'	567.00'	28° 01' 38"	274.60'	N 21° 03' 06" E
39	309.64'	633.00'	28° 01' 38"	306.57'	N 21° 03' 06" E
40	72.57'	492.00'	08° 27' 04"	72.50'	N 30° 50' 23" E
41	82.31'	558.00'	08° 27' 04"	82.23'	N 30° 50' 23" E
42	31.42'	20.00'	90° 00' 00"	28.28'	N 09° 56' 04" W
43	31.42'	20.00'	90° 00' 00"	28.28'	N 80° 03' 56" E
44	57.52'	75.00'	43° 56' 44"	56.12'	N 32° 57' 43" W
45	57.52'	75.00'	43° 56' 44"	56.12'	N 76° 54' 26" W
46	350.67'	75.00'	267° 53' 28"	108.00'	N 35° 03' 56" E



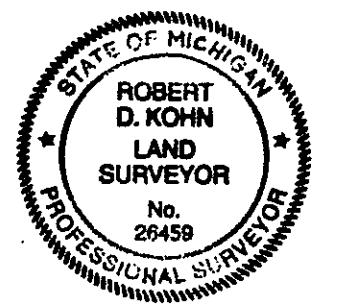
LOCATION MAP

SCALE 1" = 2000'

LEGEND

- ALL DIMENSIONS ARE GIVEN IN FEET.
- CURVILINEAR MEASUREMENTS ARE ARC DISTANCES.
- CONCRETE MONUMENTS HAVE BEEN PLACED AT ALL POINTS MARKED "o".
- CONCRETE MONUMENTS ARE STEEL BARS ONE-HALF (1/2) INCH IN DIAMETER AND THIRTY SIX (36) INCHES IN LENGTH, ENCASED IN A CONCRETE CYLINDER FOUR (4) INCHES IN DIAMETER, AND THIRTY SIX (36) INCHES IN LENGTH.
- LOT CORNERS HAVE BEEN MARKED WITH STEEL BARS ONE-HALF (1/2) INCH IN DIAMETER, AND EIGHTEEN (18) INCHES IN LENGTH.
- (R) INDICATES A RADIAL LINE.
- (NR) INDICATES A NON RADIAL LINE.
- ⊥ INDICATES A RIGHT ANGLE.
- BEARINGS ARE IN RELATION TO THE TRUE MERIDIAN, AS DETERMINED BY POLARIS OBSERVATION, DATE 11/13/1984.
- DENOTES FOUND MONUMENT 1/2 INCH STEEL BAR ENCASED IN CONCRETE 4 INCHES IN DIAMETER.

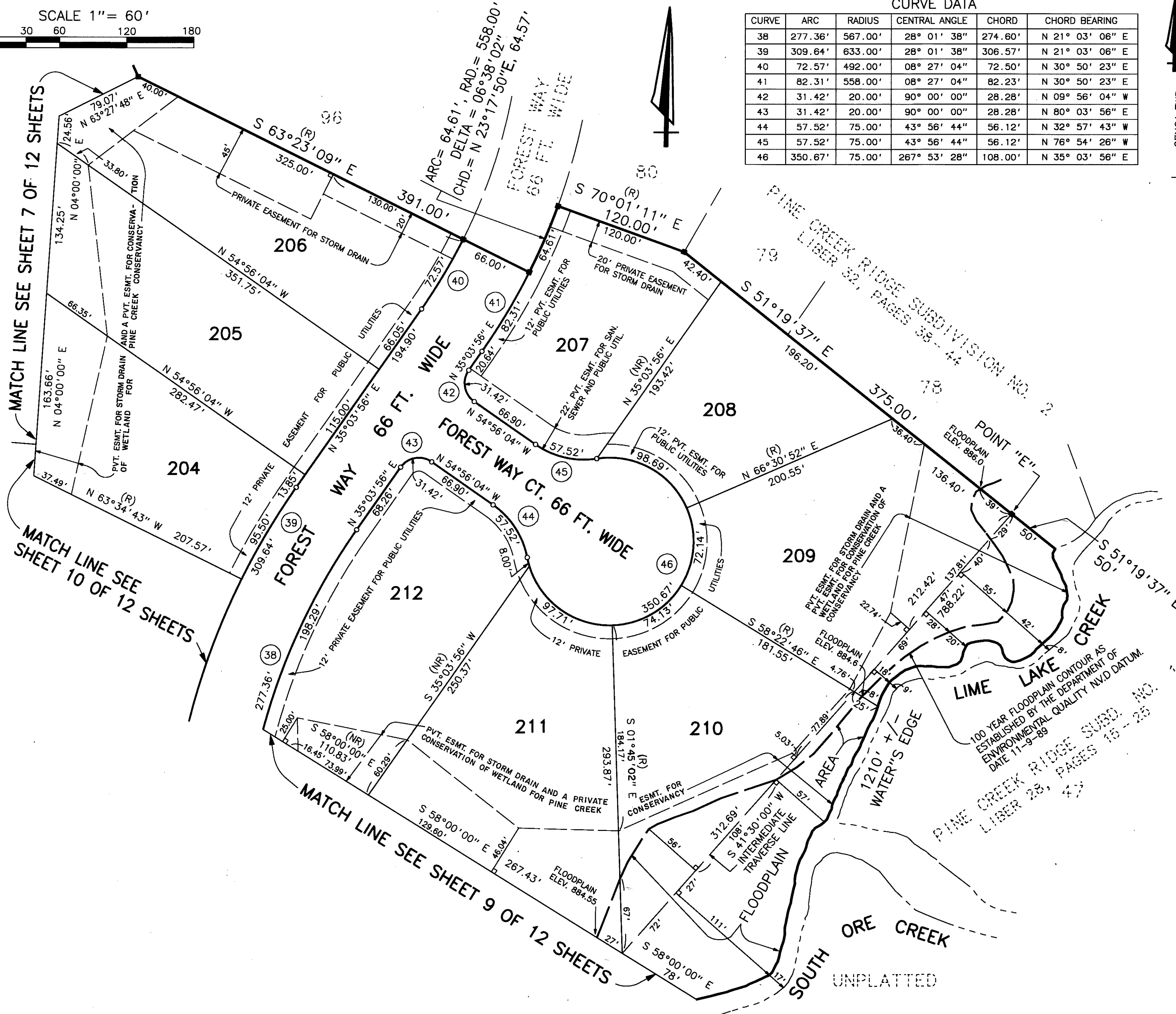
THIS PLAT IS SUBJECT TO RESTRICTIONS AS REQUIRED BY ACT 288 OF 1967 AS AMENDED ON CERTAIN LOTS WITH RESPECT TO THE REQUIREMENTS OF THE MICHIGAN DEPARTMENT OF ENVIRONMENTAL QUALITY WHICH ARE RECORDED IN LIBER 2345, PAGES 691-739 OF RECORDS OF THIS COUNTY.



Robert D. Kohn

Giffels-Webster Engineers Inc.

ENGINEERS - SURVEYORS - PLANNERS
2871 BOND STREET ROCHESTER HILLS MICHIGAN
(248) 852-3100

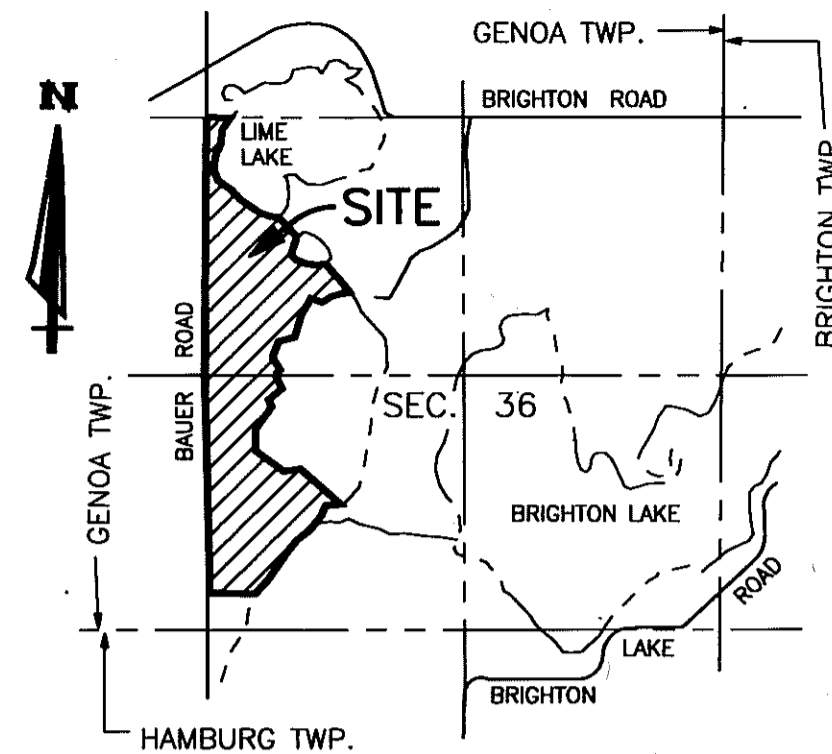
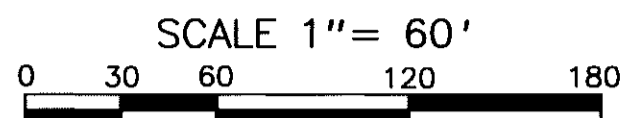


PINE CREEK RIDGE SUBDIVISION NO. 5

A PART OF THE NW. & SW. 1/4 OF SECTION 36, T-2-N, R-5-E,
GENOA TOWNSHIP, LIVINGSTON COUNTY, MICHIGAN

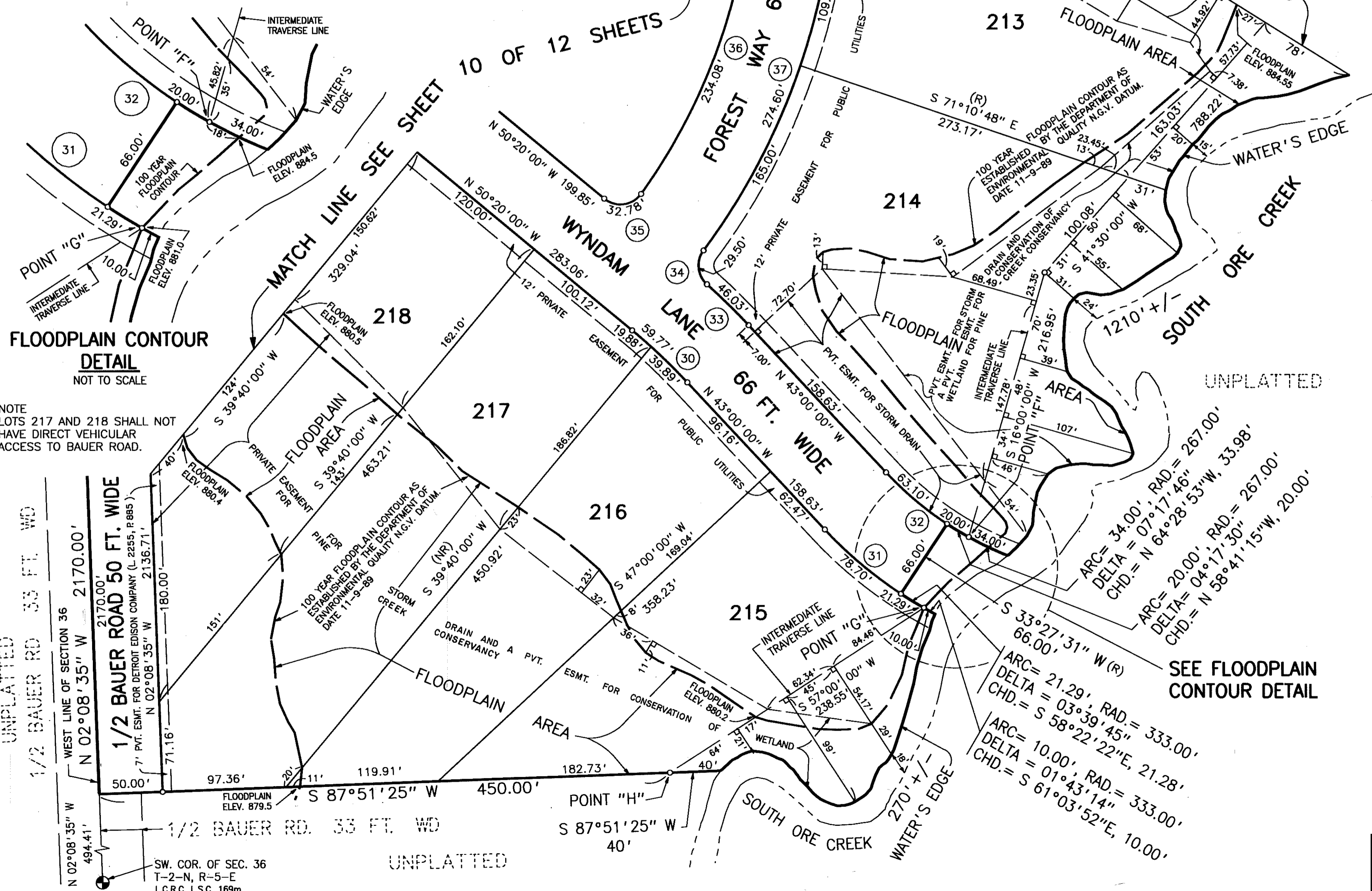
CURVE DATA

CURVE	ARC	RADIUS	CENTRAL ANGLE	CHORD	CHORD BEARING
30	59.77'	467.00'	07° 20' 00"	59.73'	N 46° 40' 00" W
31	78.70'	333.00'	13° 32' 29"	78.52'	N 49° 46' 15" W
32	63.10'	267.00'	13° 32' 29"	62.96'	N 49° 46' 15" W
33	46.03'	533.00'	04° 56' 55"	46.02'	N 45° 28' 27" W
34	29.50'	20.00'	84° 30' 20"	26.90'	N 05° 41' 45" W
35	32.78'	20.00'	93° 54' 34"	29.23'	N 82° 42' 43" E
36	234.08'	467.00'	28° 43' 08"	231.64'	N 21° 23' 51" E
37	274.60'	533.00'	29° 31' 08"	271.58'	N 21° 47' 51" E
38	277.36'	567.00'	28° 01' 38"	274.60'	N 21° 03' 06" E
39	309.64'	633.00'	28° 01' 38"	306.57'	N 21° 03' 06" E



LOCATION MAP

SCALE 1" = 2000'

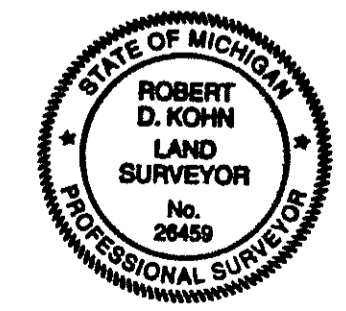


FLOODPLAIN CONTOUR
DETAIL
NOT TO SCALE

NOTE
LOTS 217 AND 218 SHALL NOT
HAVE DIRECT VEHICULAR
ACCESS TO BAUER ROAD.

- LEGEND**
- ALL DIMENSIONS ARE GIVEN IN FEET.
 - CURVILINEAR MEASUREMENTS ARE ARC DISTANCES.
 - CONCRETE MONUMENTS HAVE BEEN PLACED AT ALL POINTS MARKED "o".
 - CONCRETE MONUMENTS ARE STEEL BARS ONE-HALF (1/2) INCH IN DIAMETER AND THIRTY SIX (36) INCHES IN LENGTH, ENCASED IN A CONCRETE CYLINDER FOUR (4) INCHES IN DIAMETER, AND THIRTY SIX (36) INCHES IN LENGTH.
 - LOT CORNERS HAVE BEEN MARKED WITH STEEL BARS ONE-HALF (1/2) INCH IN DIAMETER, AND EIGHTEEN (18) INCHES IN LENGTH.
 - (R) INDICATES A RADIAL LINE.
 - (NR) INDICATES A NON RADIAL LINE.
 - ∠ INDICATES A RIGHT ANGLE.
 - BEARINGS ARE IN RELATION TO THE TRUE MERIDIAN, AS DETERMINED BY POLARIS OBSERVATION, DATE 11/13/1984.
 - DENOTES FOUND MONUMENT 1/2 INCH STEEL BAR ENCASED IN CONCRETE 4 INCHES IN DIAMETER.

THIS PLAT IS SUBJECT TO RESTRICTIONS AS REQUIRED BY ACT 288 OF 1967 AS AMENDED ON CERTAIN LOTS WITH RESPECT TO THE REQUIREMENTS OF THE MICHIGAN DEPARTMENT OF ENVIRONMENTAL QUALITY WHICH ARE RECORDED IN LIBER 2345, PAGES 691-739 OF RECORDS OF THIS COUNTY.

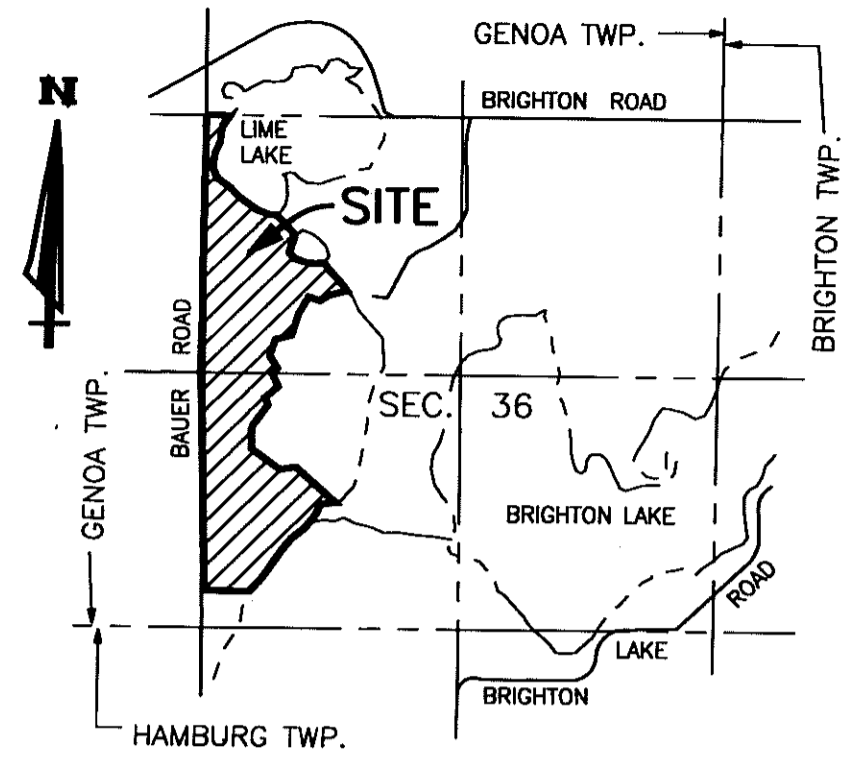


Robert D. Kohn

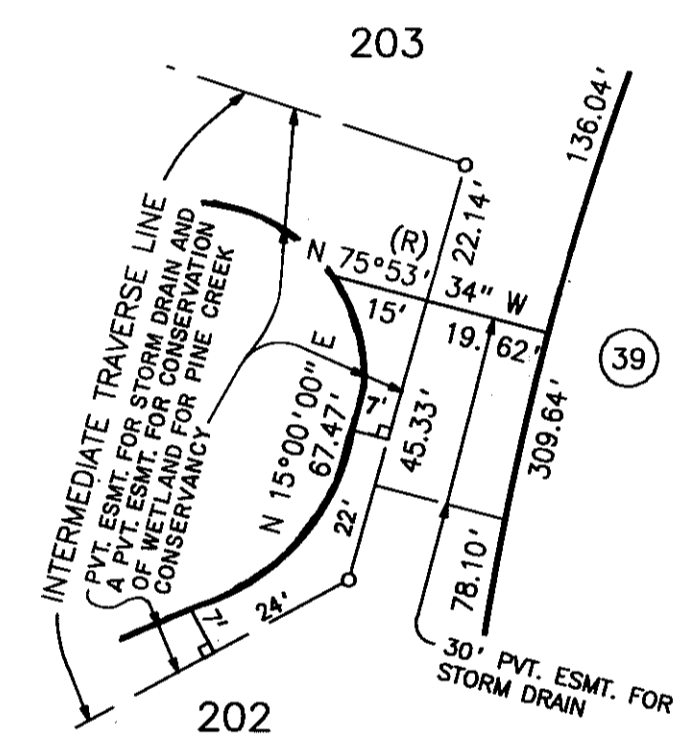
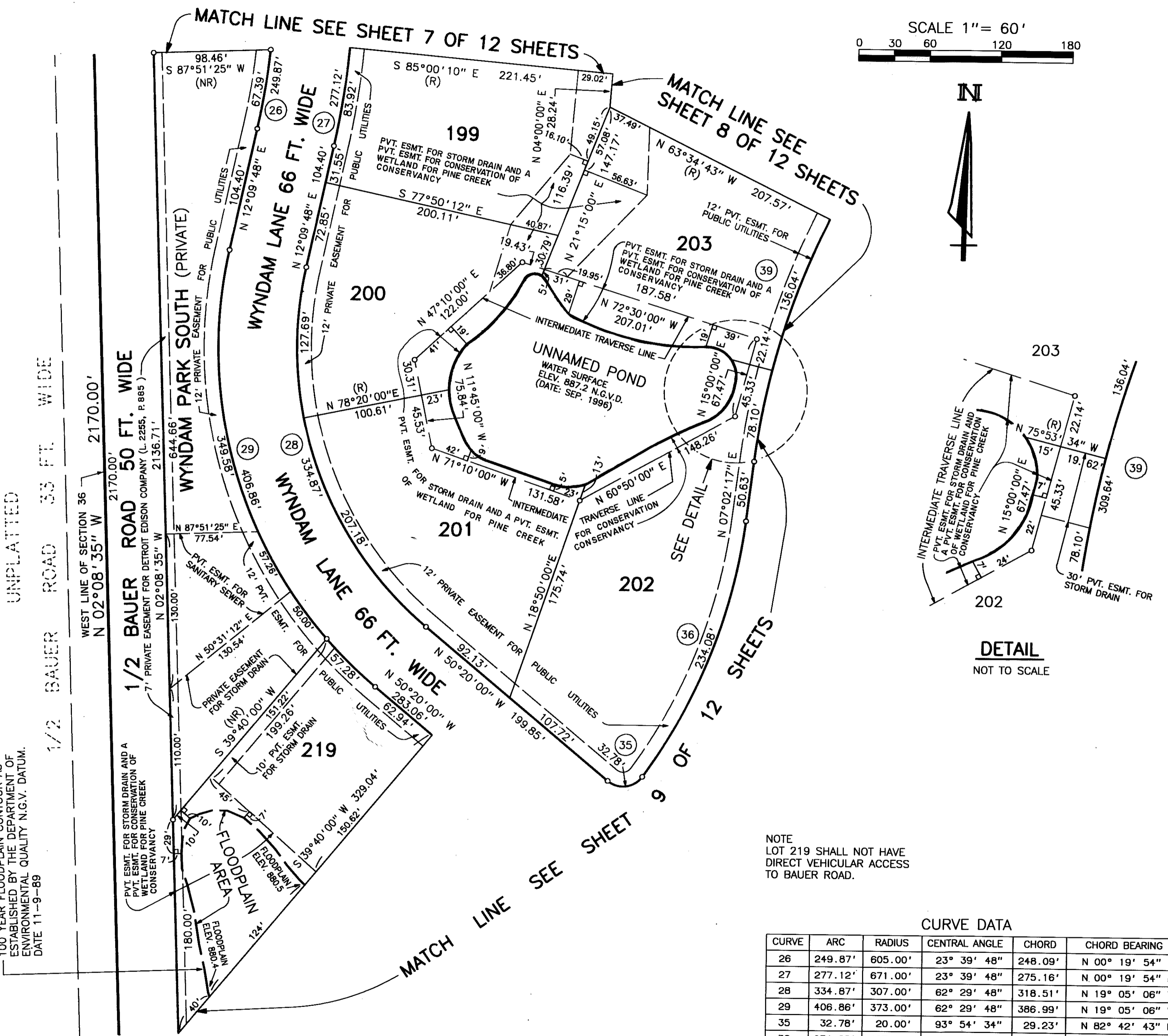
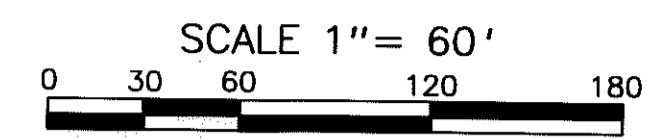
Giffels-Webster Engineers Inc.
ENGINEERS - SURVEYORS - PLANNERS
2871 BOND STREET ROCHESTER HILLS MICHIGAN
(248) 852-3100

PINE CREEK RIDGE SUBDIVISION NO. 5

A PART OF THE NW. & SW. 1/4 OF SECTION 36, T-2-N, R-5-E,
GENOA TOWNSHIP, LIVINGSTON COUNTY, MICHIGAN



LOCATION MAP
SCALE 1" = 2000'



DETAIL
NOT TO SCALE

LEGEND

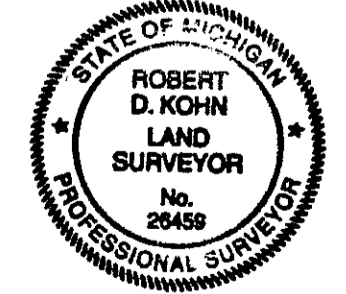
1. ALL DIMENSIONS ARE GIVEN IN FEET.
2. CURVILINEAR MEASUREMENTS ARE ARC DISTANCES.
3. CONCRETE MONUMENTS HAVE BEEN PLACED AT ALL POINTS MARKED "O".
4. CONCRETE MONUMENTS ARE STEEL BARS ONE-HALF (1/2) INCH IN DIAMETER AND THIRTY SIX (36) INCHES IN LENGTH, ENCASED IN A CONCRETE CYLINDER FOUR (4) INCHES IN DIAMETER, AND THIRTY SIX (36) INCHES IN LENGTH.
5. LOT CORNERS HAVE BEEN MARKED WITH STEEL BARS ONE-HALF (1/2) INCH IN DIAMETER, AND EIGHTEEN (18) INCHES IN LENGTH.
6. (R) INDICATES A RADIAL LINE.
7. (NR) INDICATES A NON RADIAL LINE.
8. ⊥ INDICATES A RIGHT ANGLE.
9. BEARINGS ARE IN RELATION TO THE TRUE MERIDIAN, AS DETERMINED BY POLARIS OBSERVATION, DATE 11/13/1984.
10. ■ DENOTES FOUND MONUMENT 1/2 INCH STEEL BAR ENCASED IN CONCRETE 4 INCHES IN DIAMETER.

THIS PLAT IS SUBJECT TO RESTRICTIONS AS REQUIRED BY ACT 288 OF 1967 AS AMENDED ON CERTAIN LOTS WITH RESPECT TO THE REQUIREMENTS OF THE MICHIGAN DEPARTMENT OF ENVIRONMENTAL QUALITY WHICH ARE RECORDED IN LIBER 2345, PAGES 691-739 OF RECORDS OF THIS COUNTY.

NOTE
LOT 219 SHALL NOT HAVE DIRECT VEHICULAR ACCESS TO BAUER ROAD.

CURVE DATA

CURVE	ARC	RADIUS	CENTRAL ANGLE	CHORD	CHORD BEARING
26	249.87'	605.00'	23° 39' 48"	248.09'	N 00° 19' 54" E
27	277.12'	671.00'	23° 39' 48"	275.16'	N 00° 19' 54" E
28	334.87'	307.00'	62° 29' 46"	318.51'	N 19° 05' 06" W
29	406.86'	373.00'	62° 29' 48"	386.99'	N 19° 05' 06" W
35	32.78'	20.00'	93° 54' 34"	29.23'	N 82° 42' 43" E
36	234.08'	467.00'	28° 43' 08"	231.64'	N 21° 23' 51" E
39	309.64'	633.00'	28° 01' 38"	306.57'	N 21° 03' 06" E



Robert D. Kohn

Giffels-Webster Engineers Inc.
ENGINEERS - SURVEYORS - PLANNERS
2871 BOND STREET ROCHESTER HILLS MICHIGAN
(248) 852-3100

UNPLATTED
100 YEAR FLOODPLAIN CONTOUR AS ESTABLISHED BY THE DEPARTMENT OF ENVIRONMENTAL QUALITY N.G.V. DATUM. DATE 11-9-89

1/2 BAUER ROAD 33 FT. WIDE
1/2 BAUER ROAD 33 FT. WIDE

1/2 BAUER ROAD 50 FT. WIDE
1/2 BAUER ROAD 50 FT. WIDE

1/2 BAUER ROAD 66 FT. WIDE
1/2 BAUER ROAD 66 FT. WIDE

1/2 BAUER ROAD 66 FT. WIDE
1/2 BAUER ROAD 66 FT. WIDE

1/2 BAUER ROAD 66 FT. WIDE
1/2 BAUER ROAD 66 FT. WIDE

1/2 BAUER ROAD 66 FT. WIDE
1/2 BAUER ROAD 66 FT. WIDE

1/2 BAUER ROAD 66 FT. WIDE
1/2 BAUER ROAD 66 FT. WIDE

1/2 BAUER ROAD 66 FT. WIDE
1/2 BAUER ROAD 66 FT. WIDE

1/2 BAUER ROAD 66 FT. WIDE
1/2 BAUER ROAD 66 FT. WIDE

1/2 BAUER ROAD 66 FT. WIDE
1/2 BAUER ROAD 66 FT. WIDE

1/2 BAUER ROAD 66 FT. WIDE
1/2 BAUER ROAD 66 FT. WIDE

1/2 BAUER ROAD 66 FT. WIDE
1/2 BAUER ROAD 66 FT. WIDE

1/2 BAUER ROAD 66 FT. WIDE
1/2 BAUER ROAD 66 FT. WIDE

1/2 BAUER ROAD 66 FT. WIDE
1/2 BAUER ROAD 66 FT. WIDE

1/2 BAUER ROAD 66 FT. WIDE
1/2 BAUER ROAD 66 FT. WIDE

1/2 BAUER ROAD 66 FT. WIDE
1/2 BAUER ROAD 66 FT. WIDE

1/2 BAUER ROAD 66 FT. WIDE
1/2 BAUER ROAD 66 FT. WIDE

1/2 BAUER ROAD 66 FT. WIDE
1/2 BAUER ROAD 66 FT. WIDE