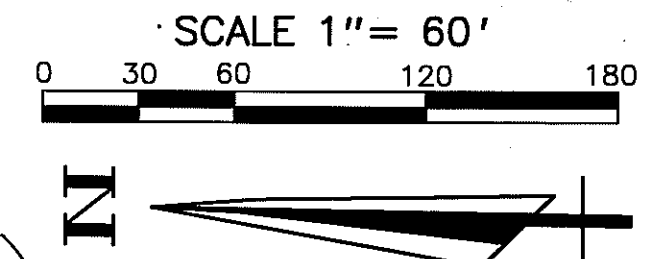
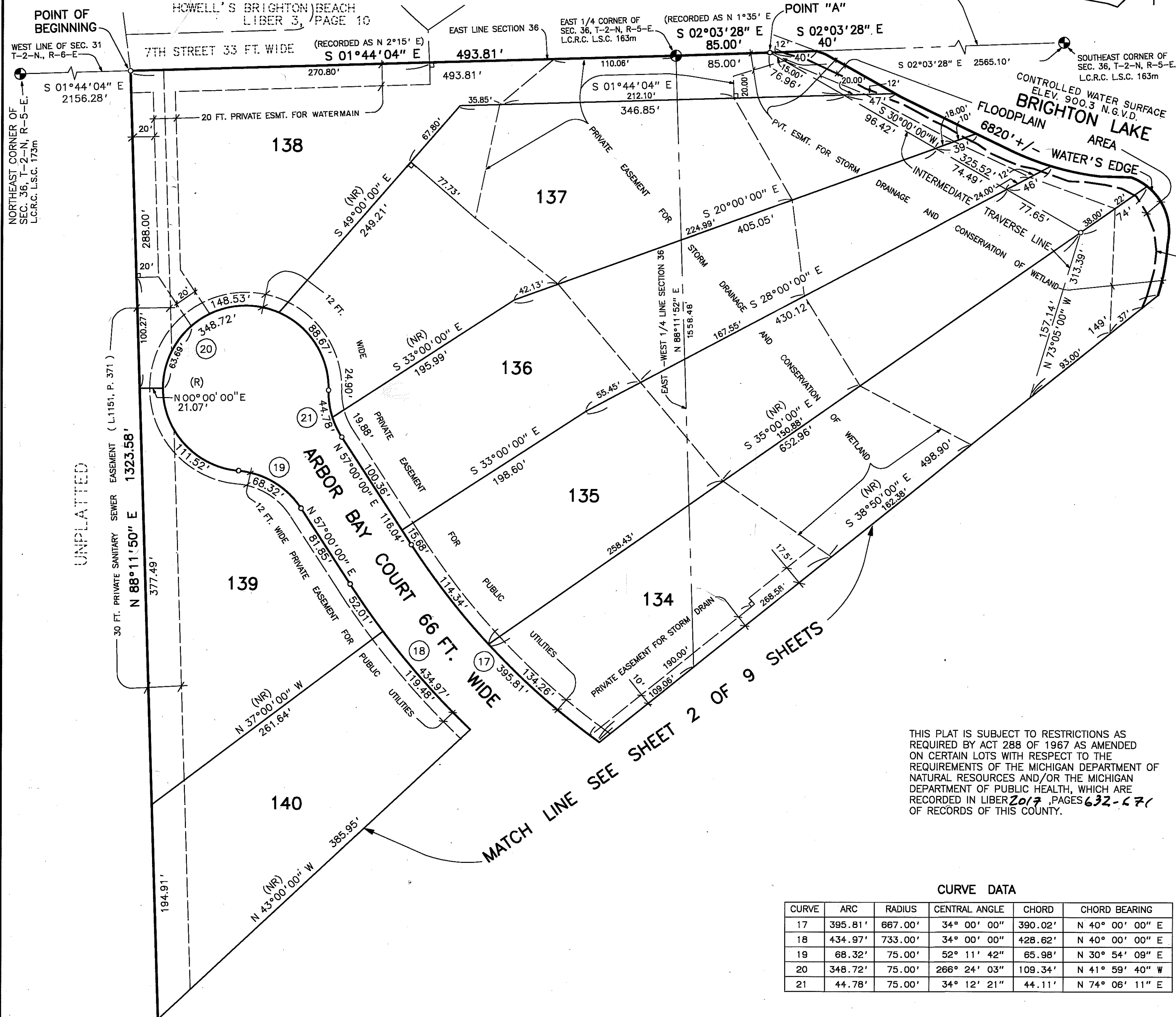
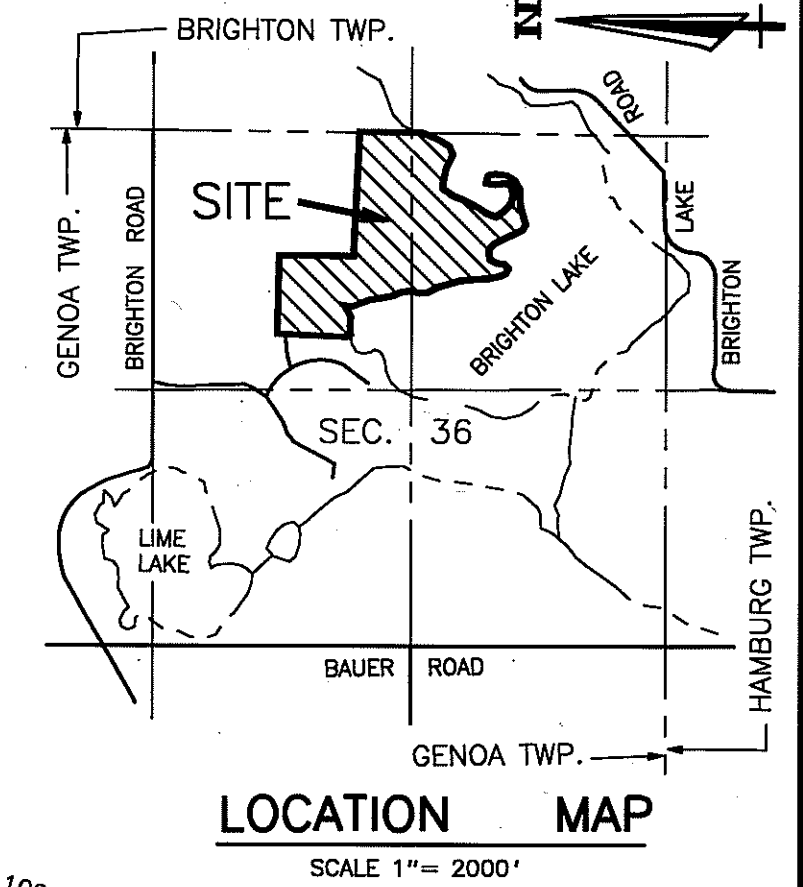


PINE CREEK RIDGE SUBDIVISION NO. 4

A PART OF THE NE. 1/4 & SE. 1/4 OF SECTION 36, T-2-N, R-5-E,
GENOA TOWNSHIP, LIVINGSTON COUNTY, MICHIGAN



LIBER PAGE
SHEET 1 OF 9 SHEETS



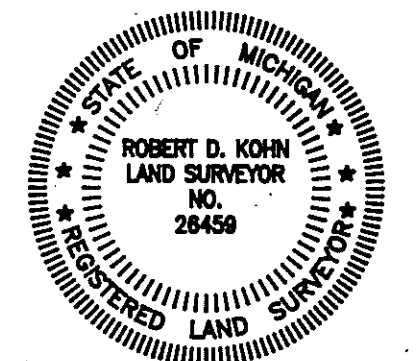
UNPLATTED

100 YEAR FLOODPLAIN CONTOUR ELEV. 901.9
AS ESTABLISHED BY DEPARTMENT OF NATURAL
RESOURCES N. G. V. DATUM. DATE 11-9-89.

LEGEND

1. ALL DIMENSIONS ARE GIVEN IN FEET.
2. CURVILINEAR MEASUREMENTS ARE ARC DISTANCES.
3. CONCRETE MONUMENTS HAVE BEEN PLACED AT ALL POINTS MARKED "O".
4. CONCRETE MONUMENTS ARE STEEL BARS ONE-HALF (1/2) INCH IN DIAMETER AND THIRTY SIX (36) INCHES IN LENGTH, ENCASED IN A CONCRETE CYLINDER FOUR (4) INCHES IN DIAMETER, AND THIRTY SIX (36) INCHES IN LENGTH.
5. LOT CORNERS HAVE BEEN MARKED WITH STEEL BARS ONE-HALF (1/2) INCH IN DIAMETER, AND EIGHTEEN (18) INCHES IN LENGTH.
6. (R) INDICATES A RADIAL LINE.
7. (NR) INDICATES A NON RADIAL LINE.
8. L INDICATES A RIGHT ANGLE.
9. BEARINGS ARE IN RELATION TO THE TRUE MERIDIAN, AS DETERMINED BY POLARIS OBSERVATION, DATE 11/13/1984.

THIS PLAT IS SUBJECT TO RESTRICTIONS AS REQUIRED BY ACT 288 OF 1967 AS AMENDED ON CERTAIN LOTS WITH RESPECT TO THE REQUIREMENTS OF THE MICHIGAN DEPARTMENT OF NATURAL RESOURCES AND/OR THE MICHIGAN DEPARTMENT OF PUBLIC HEALTH, WHICH ARE RECORDED IN LIBER 2017, PAGES 632-671 OF RECORDS OF THIS COUNTY.



Robert D. Kohn

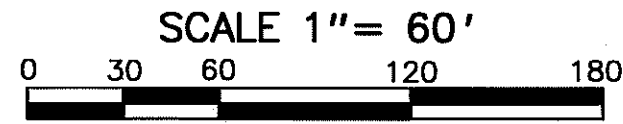
CURVE DATA

CURVE	ARC	RADIUS	CENTRAL ANGLE	CHORD	CHORD BEARING
17	395.81'	667.00'	34° 00' 00"	390.02'	N 40° 00' 00" E
18	434.97'	733.00'	34° 00' 00"	428.62'	N 40° 00' 00" E
19	68.32'	75.00'	52° 11' 42"	65.98'	N 30° 54' 09" E
20	348.72'	75.00'	266° 24' 03"	109.34'	N 41° 59' 40" W
21	44.78'	75.00'	34° 12' 21"	44.11'	N 74° 06' 11" E

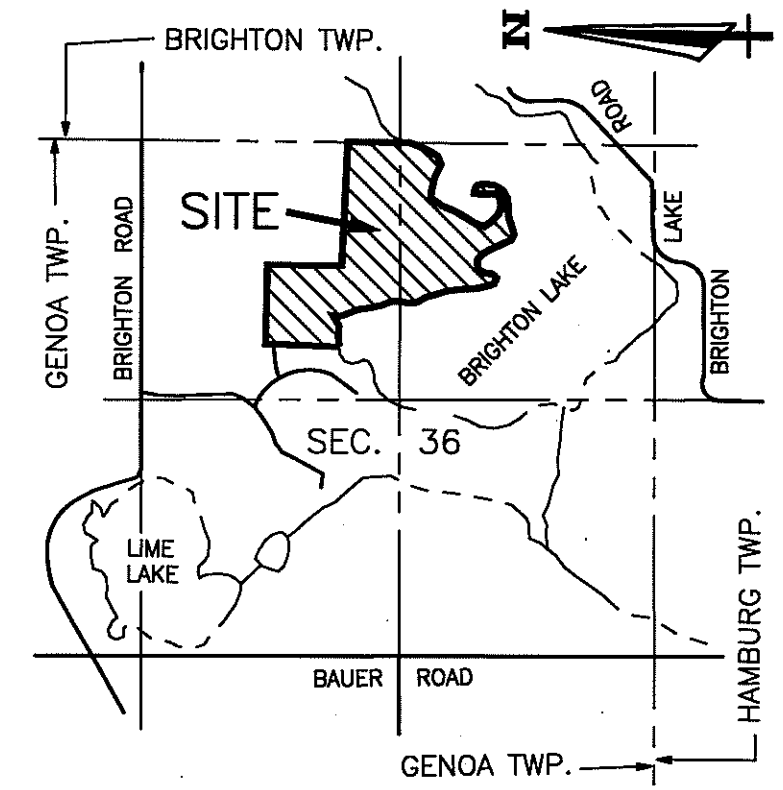
Giffels-Webster Engineers Inc.
ENGINEERS - SURVEYORS - PLANNERS
2871 BOND STREET ROCHESTER HILLS MICHIGAN
(810) 852-3100

PINE CREEK RIDGE SUBDIVISION NO. 4

A PART OF THE NE. 1/4 & SE. 1/4 OF SECTION 36, T-2-N, R-5-E,
GENOA TOWNSHIP, LIVINGSTON COUNTY, MICHIGAN



LIBER PAGE
SHEET 2 OF 9 SHEETS



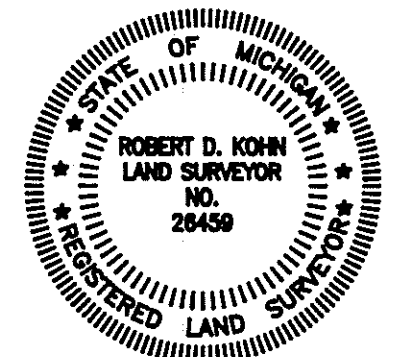
LOCATION MAP

SCALE 1" = 2000'

LEGEND

1. ALL DIMENSIONS ARE GIVEN IN FEET.
2. CURVILINEAR MEASUREMENTS ARE ARC DISTANCES.
3. CONCRETE MONUMENTS HAVE BEEN PLACED AT ALL POINTS MARKED "o".
4. CONCRETE MONUMENTS ARE STEEL BARS ONE-HALF (1/2) INCH IN DIAMETER AND THIRTY SIX (36) INCHES IN LENGTH, ENCASED IN A CONCRETE CYLINDER FOUR (4) INCHES IN DIAMETER, AND THIRTY SIX (36) INCHES IN LENGTH.
5. LOT CORNERS HAVE BEEN MARKED WITH STEEL BARS ONE-HALF (1/2) INCH IN DIAMETER, AND EIGHTEEN (18) INCHES IN LENGTH.
6. (R) INDICATES A RADIAL LINE.
7. (NR) INDICATES A NON RADIAL LINE.
8. L INDICATES A RIGHT ANGLE.
9. BEARINGS ARE IN RELATION TO THE TRUE MERIDIAN, AS DETERMINED BY POLARIS OBSERVATION, DATE 11/13/1984.

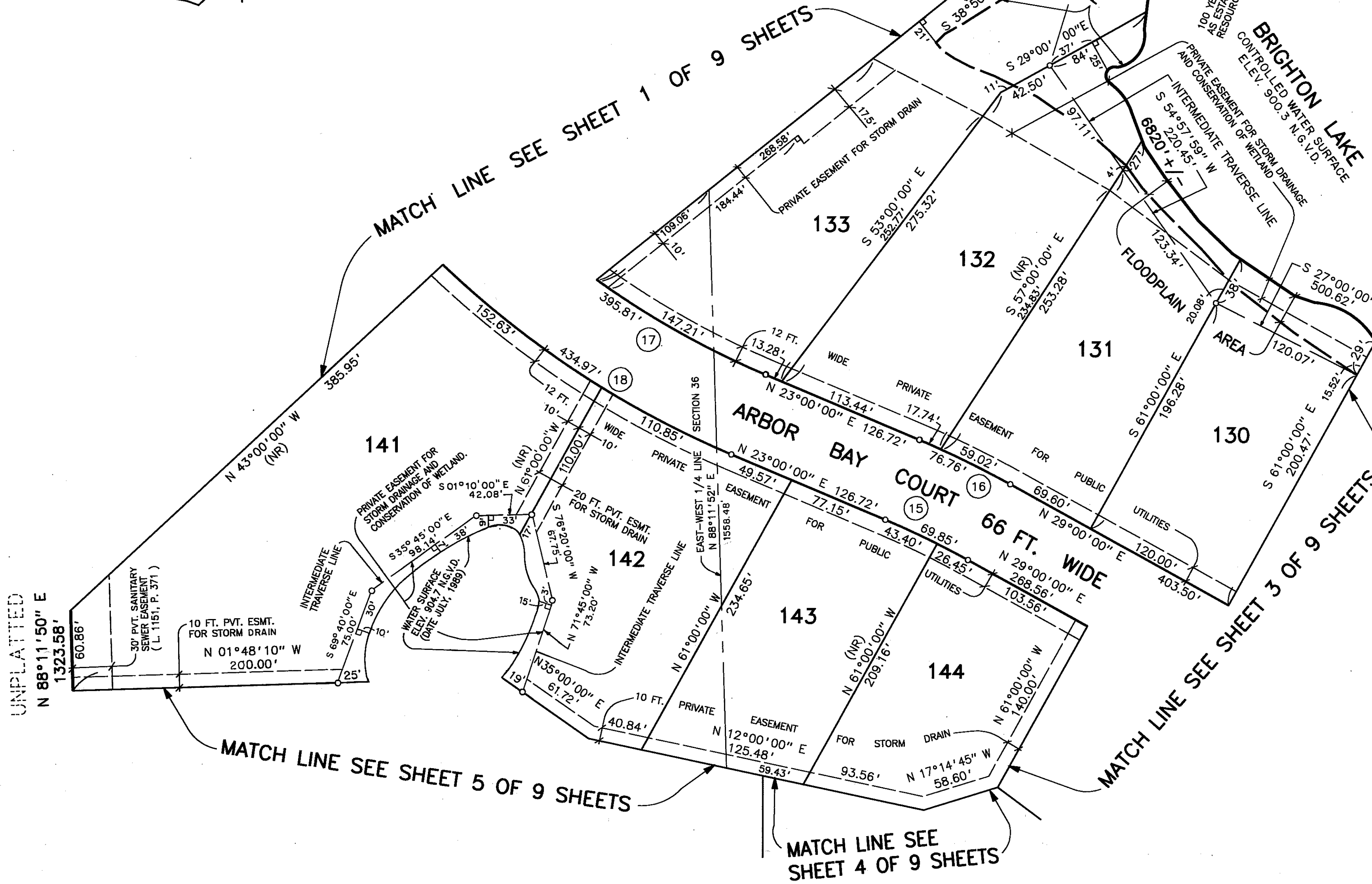
THIS PLAT IS SUBJECT TO RESTRICTIONS AS REQUIRED BY ACT 288 OF 1967 AS AMENDED ON CERTAIN LOTS WITH RESPECT TO THE REQUIREMENTS OF THE MICHIGAN DEPARTMENT OF NATURAL RESOURCES AND/OR THE MICHIGAN DEPARTMENT OF PUBLIC HEALTH, WHICH ARE RECORDED IN LIBER 2017, PAGES 632-671 OF RECORDS OF THIS COUNTY.



Robert D. Kohn

Giffels-Webster Engineers Inc.

ENGINEERS - SURVEYORS - PLANNERS
2871 BOND STREET ROCHESTER HILLS MICHIGAN
(810) 852-3100



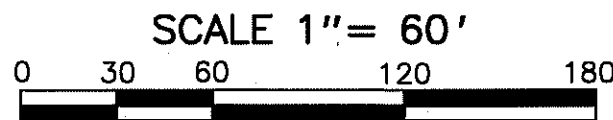
CURVE DATA

CURVE	ARC	RADIUS	CENTRAL ANGLE	CHORD	CHORD BEARING
15	69.85'	667.00'	06° 00' 00"	69.82'	N 26° 00' 00" E
16	76.76'	733.00'	06° 00' 00"	76.72'	N 26° 00' 00" E
17	395.81'	667.00'	34° 00' 00"	390.02'	N 40° 00' 00" E
18	434.97'	733.00'	34° 00' 00"	428.62'	N 40° 00' 00" E

UNPLATTED
N 88°11'50" E
1323.58'

PINE CREEK RIDGE SUBDIVISION NO. 4

A PART OF THE NE. 1/4 & SE. 1/4 OF SECTION 36, T-2-N, R-5-E,
GENOA TOWNSHIP, LIVINGSTON COUNTY, MICHIGAN



CURVE DATA

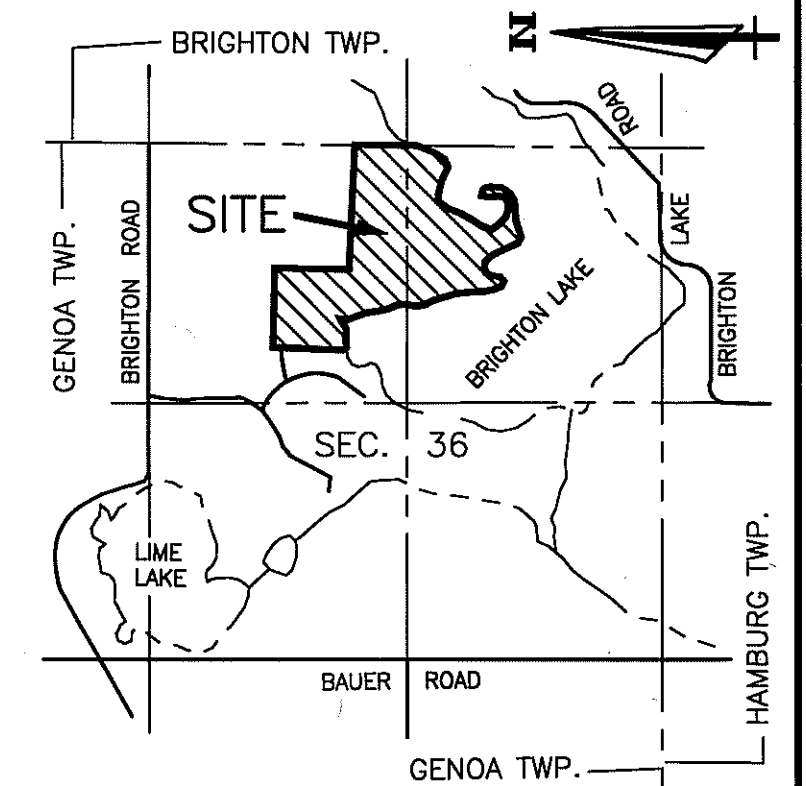
CURVE	ARC	RADIUS	CENTRAL ANGLE	CHORD	CHORD BEARING
8	284.26'	267.00'	61° 00' 00"	271.02'	N 30° 30' 00" W
10	39.27'	25.00'	90° 00' 00"	35.36'	N 18° 00' 00" W
11	57.52'	75.00'	43° 56' 44"	56.12'	N 50° 58' 22" E
12	350.67'	75.00'	267° 53' 28"	108.00'	N 61° 00' 00" W
13	57.52'	75.00'	43° 56' 44"	56.12'	N 07° 01' 38" E
14	39.27'	25.00'	90° 00' 00"	35.36'	N 74° 00' 00" E

100 YEAR FLOODPLAIN CONTOUR ELEV. 901.9
AS ESTABLISHED BY DEPARTMENT OF NATURAL
RESOURCES N. G. V. DATUM. DATE 11-9-89.

BRIGHTON LAKE
CONTROLLED WATER SURFACE
ELEV. 900.3 N.G.V.D.

100 YEAR FLOODPLAIN CONTOUR ELEV. 901.9
AS ESTABLISHED BY DEPARTMENT OF NATURAL
RESOURCES N. G. V. DATUM. DATE 11-9-89.

BRIGHTON LAKE
CONTROLLED WATER SURFACE
ELEV. 900.3 N.G.V.D.

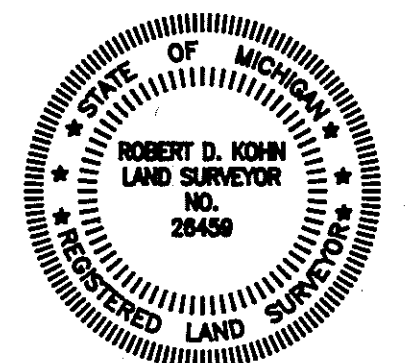


LOCATION MAP
SCALE 1" = 2000'

LEGEND

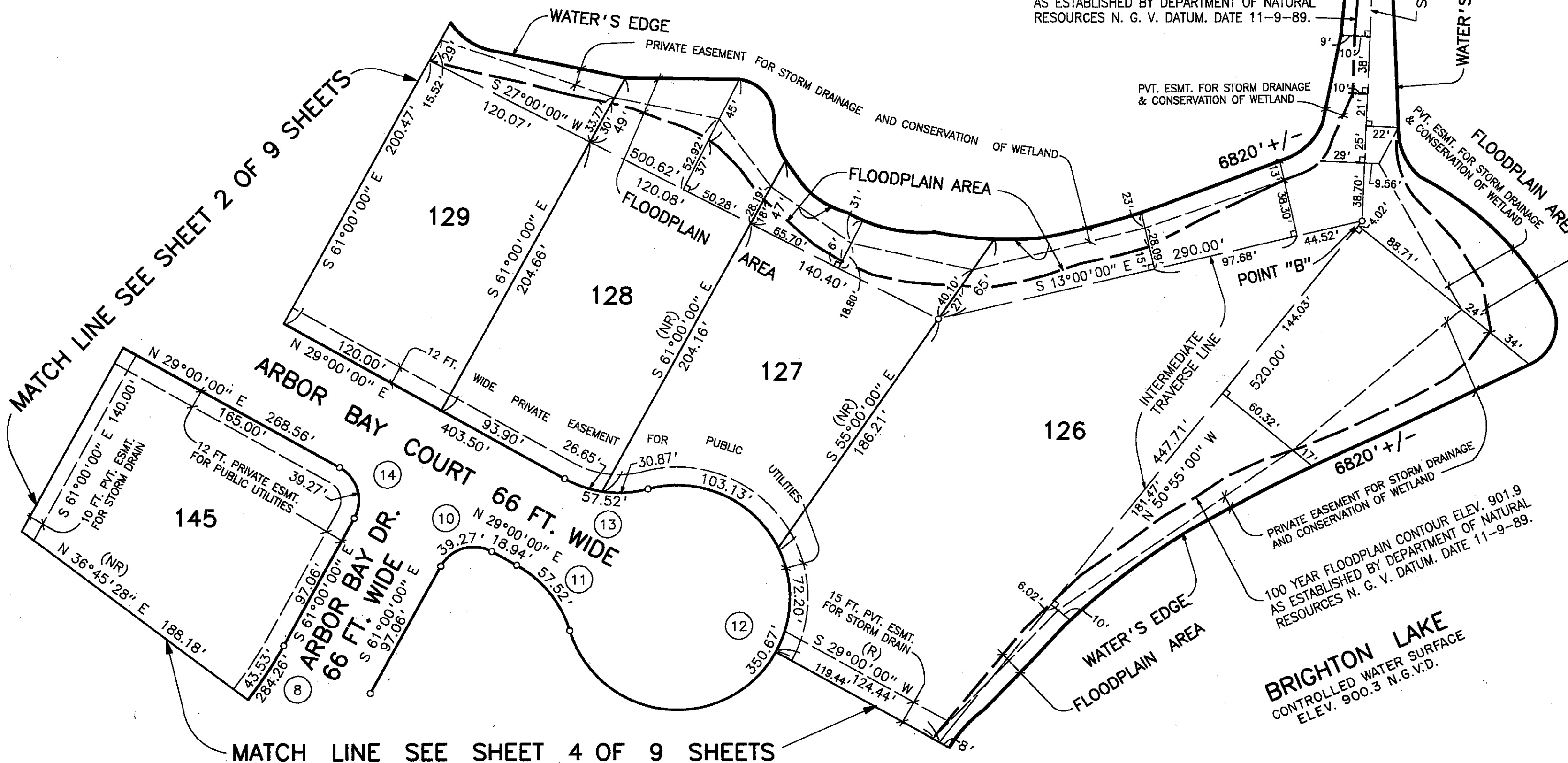
1. ALL DIMENSIONS ARE GIVEN IN FEET.
2. CURVILINEAR MEASUREMENTS ARE ARC DISTANCES.
3. CONCRETE MONUMENTS HAVE BEEN PLACED AT ALL POINTS MARKED "o".
4. CONCRETE MONUMENTS ARE STEEL BARS ONE-HALF (1/2) INCH IN DIAMETER AND THIRTY SIX (36) INCHES IN LENGTH, ENCASED IN A CONCRETE CYLINDER FOUR (4) INCHES IN DIAMETER, AND THIRTY SIX (36) INCHES IN LENGTH.
5. LOT CORNERS HAVE BEEN MARKED WITH STEEL BARS ONE-HALF (1/2) INCH IN DIAMETER, AND EIGHTEEN (18) INCHES IN LENGTH.
6. (R) INDICATES A RADIAL LINE.
7. (NR) INDICATES A NON RADIAL LINE.
8. L INDICATES A RIGHT ANGLE.
9. BEARINGS ARE IN RELATION TO THE TRUE MERIDIAN, AS DETERMINED BY POLARIS OBSERVATION, DATE 11/13/1984.

THIS PLAN IS SUBJECT TO RESTRICTIONS AS REQUIRED BY ACT 288 OF 1967 AS AMENDED ON CERTAIN LOTS WITH RESPECT TO THE REQUIREMENTS OF THE MICHIGAN DEPARTMENT OF NATURAL RESOURCES AND/OR THE MICHIGAN DEPARTMENT OF PUBLIC HEALTH, WHICH ARE RECORDED IN LIBER 2017, PAGES 632-671 OF RECORDS OF THIS COUNTY.



Robert D. Kohn

Giffels-Webster Engineers Inc.
ENGINEERS - SURVEYORS - PLANNERS
2871 BOND STREET ROCHESTER HILLS MICHIGAN
(810) 852-3100

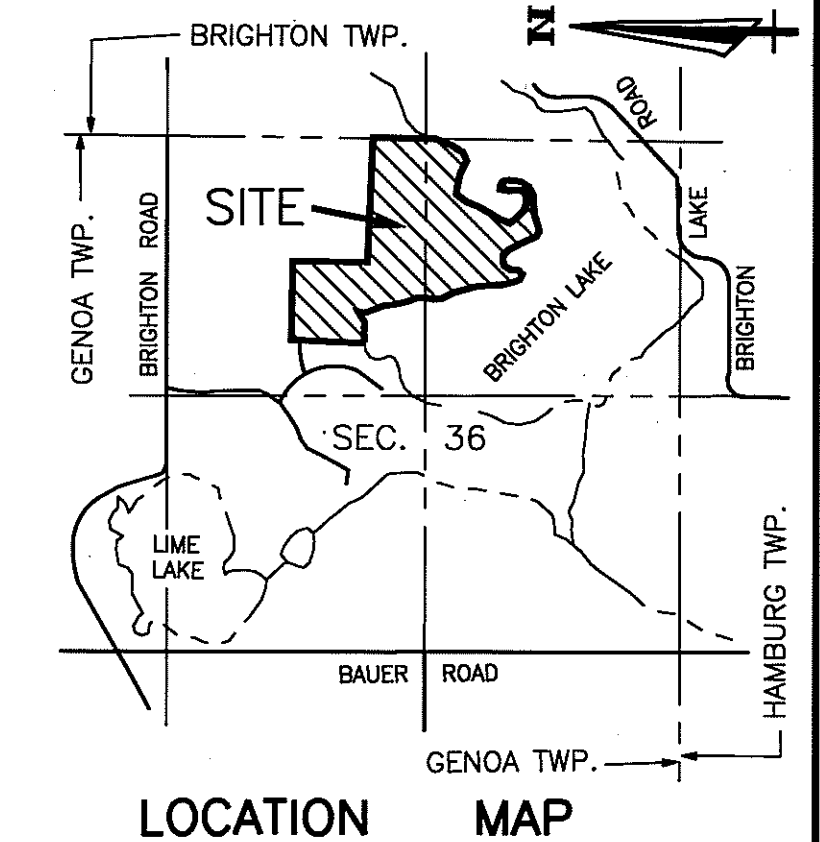
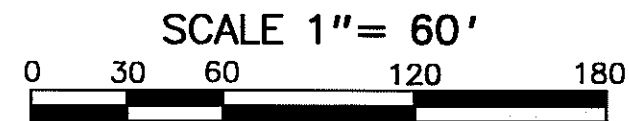


MATCH LINE SEE SHEET 2 OF 9 SHEETS

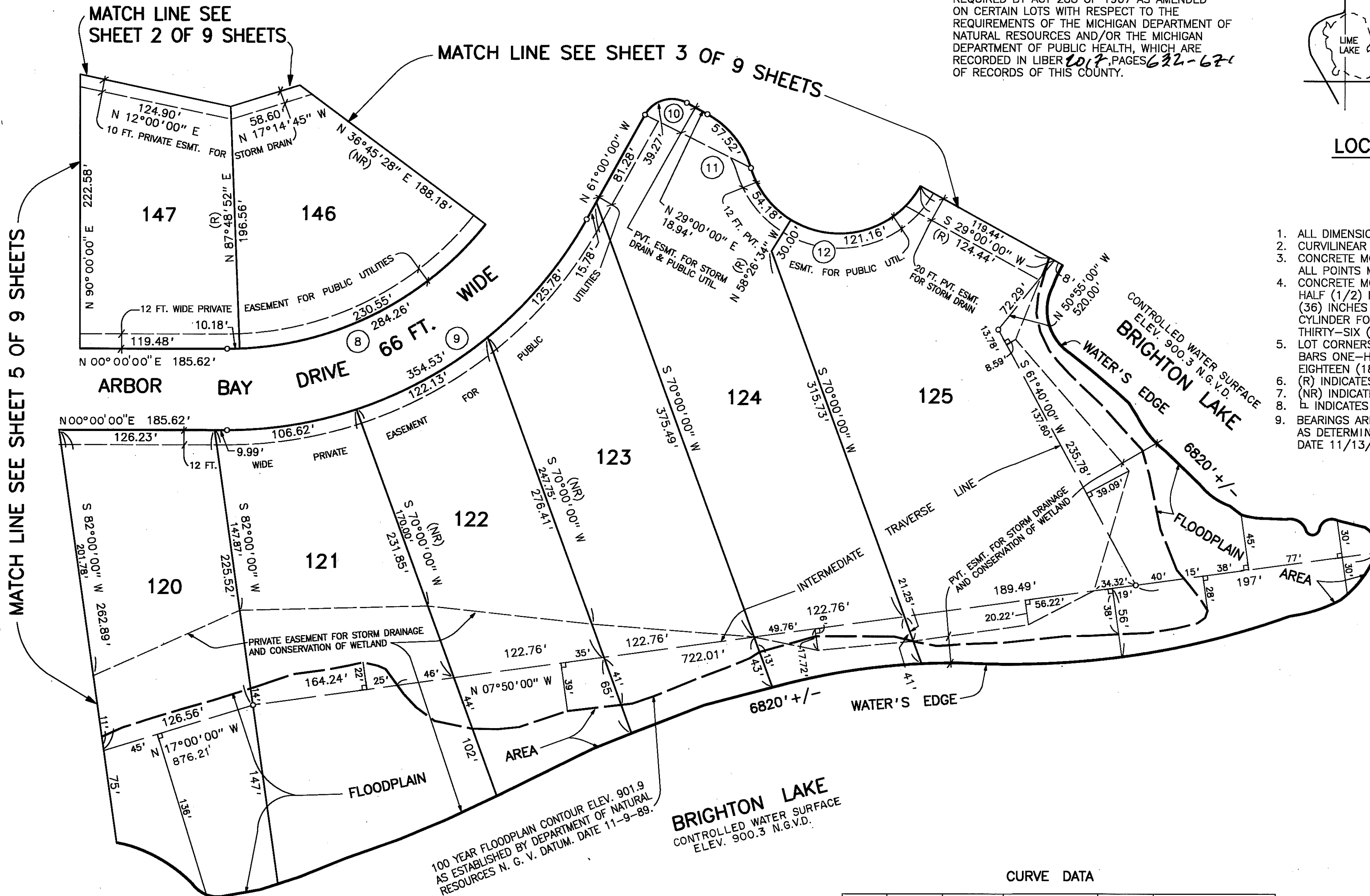
MATCH LINE SEE SHEET 4 OF 9 SHEETS

PINE CREEK RIDGE SUBDIVISION NO. 4

A PART OF THE NE. 1/4 & SE. 1/4 OF SECTION 36, T-2-N, R-5-E,
GENOA TOWNSHIP, LIVINGSTON COUNTY, MICHIGAN



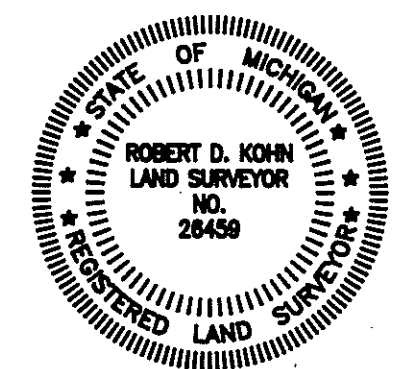
THIS PLAT IS SUBJECT TO RESTRICTIONS AS REQUIRED BY ACT 288 OF 1967 AS AMENDED ON CERTAIN LOTS WITH RESPECT TO THE REQUIREMENTS OF THE MICHIGAN DEPARTMENT OF NATURAL RESOURCES AND/OR THE MICHIGAN DEPARTMENT OF PUBLIC HEALTH, WHICH ARE RECORDED IN LIBER 2017, PAGES 622-627 OF RECORDS OF THIS COUNTY.



- LEGEND**
1. ALL DIMENSIONS ARE GIVEN IN FEET.
 2. CURVILINEAR MEASUREMENTS ARE ARC DISTANCES.
 3. CONCRETE MONUMENTS HAVE BEEN PLACED AT ALL POINTS MARKED "o".
 4. CONCRETE MONUMENTS ARE STEEL BARS ONE-HALF (1/2) INCH IN DIAMETER AND THIRTY-SIX (36) INCHES IN LENGTH, ENCASED IN A CONCRETE CYLINDER FOUR (4) INCHES IN DIAMETER, AND THIRTY-SIX (36) INCHES IN LENGTH.
 5. LOT CORNERS HAVE BEEN MARKED WITH STEEL BARS ONE-HALF (1/2) INCH IN DIAMETER, AND EIGHTEEN (18) INCHES IN LENGTH.
 6. (R) INDICATES A RADIAL LINE.
 7. (NR) INDICATES A NON RADIAL LINE.
 8. ⊥ INDICATES A RIGHT ANGLE.
 9. BEARINGS ARE IN RELATION TO THE TRUE MERIDIAN, AS DETERMINED BY POLARIS OBSERVATION, DATE 11/13/1984.

CURVE DATA

CURVE	ARC	RADIUS	CENTRAL ANGLE	CHORD	CHORD BEARING
8	284.26'	267.00'	61° 00' 00"	271.02'	N 30° 30' 00" W
9	354.53'	333.00'	61° 00' 00"	338.02'	N 30° 30' 00" W
10	39.27'	25.00'	90° 00' 00"	35.36'	N 16° 00' 00" W
11	57.52'	75.00'	43° 56' 44"	56.12'	N 50° 58' 22" E
12	350.67'	75.00'	267° 53' 28"	108.00'	N 61° 00' 00" W



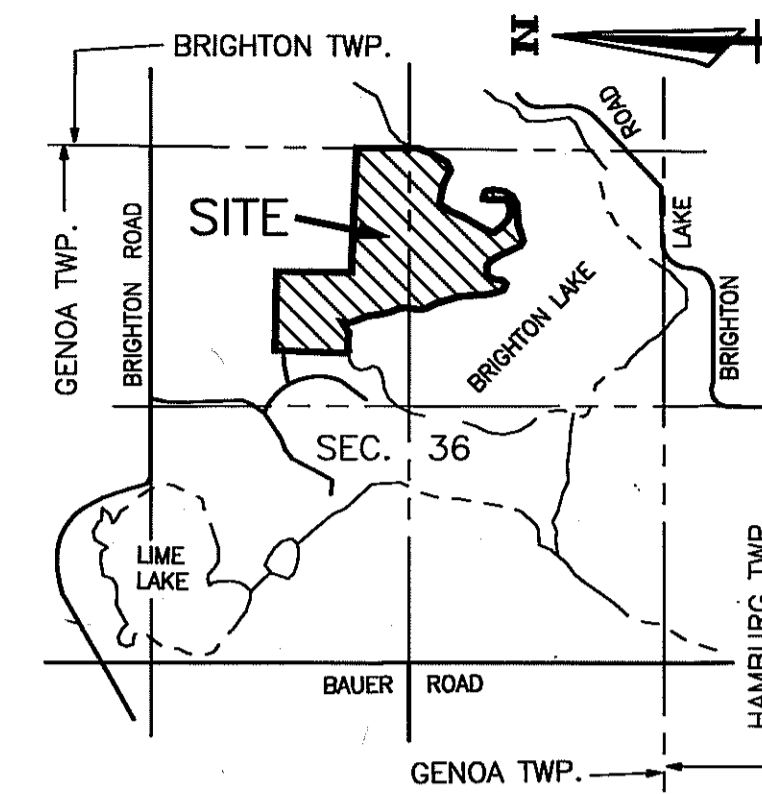
Robert D. Kohn

Giffels-Webster Engineers Inc.
ENGINEERS - SURVEYORS - PLANNERS
2871 BOND STREET ROCHESTER HILLS MICHIGAN
(810) 852-3100

PINE CREEK RIDGE SUBDIVISION NO. 4

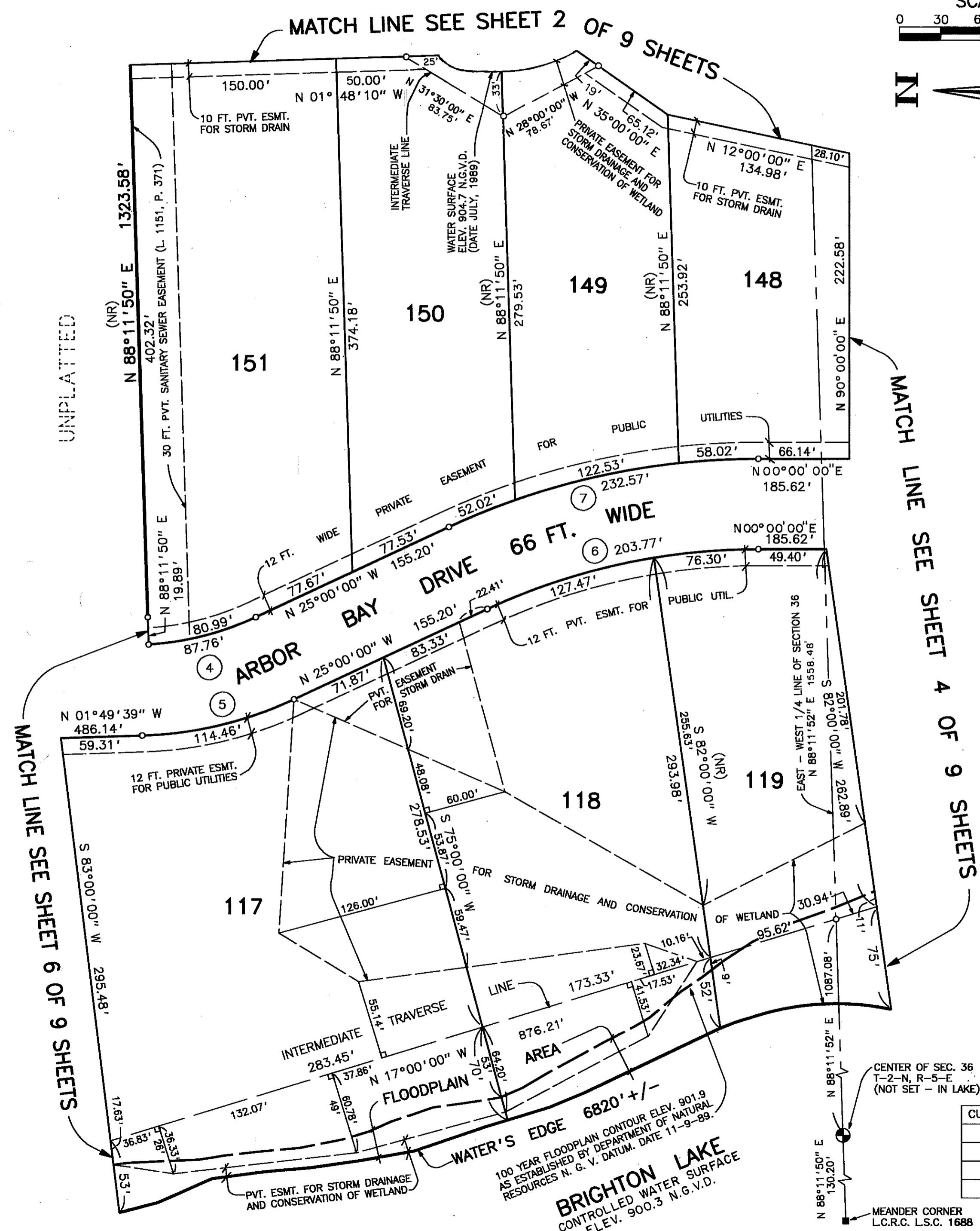
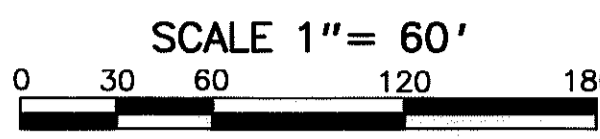
A PART OF THE NE. 1/4 & SE. 1/4 OF SECTION 36, T-2-N, R-5-E,
GENOA TOWNSHIP, LIVINGSTON COUNTY, MICHIGAN

LIBER PAGE
SHEET 5 OF 9 SHEETS



LOCATION MAP

SCALE 1" = 2000'

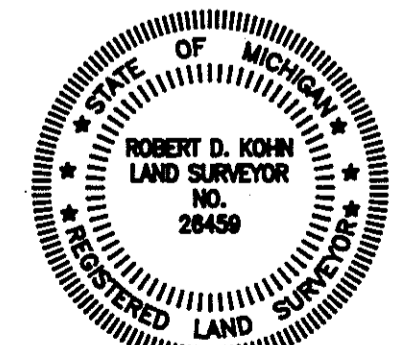


CERTIFIED TRUE COPY OF
RECORDED PLAT
BY DEPARTMENT OF COMMERCE
By *Maynard R. Dyer, P.S.*
Manager
Subdivision Control Unit
Date 3/25/96

LEGEND

1. ALL DIMENSIONS ARE GIVEN IN FEET.
2. CURVILINEAR MEASUREMENTS ARE ARC DISTANCES.
3. CONCRETE MONUMENTS HAVE BEEN PLACED AT ALL POINTS MARKED "o".
4. CONCRETE MONUMENTS ARE STEEL BARS ONE-HALF (1/2) INCH IN DIAMETER AND THIRTY SIX (36) INCHES IN LENGTH, ENCASED IN A CONCRETE CYLINDER FOUR (4) INCHES IN DIAMETER, AND THIRTY SIX (36) INCHES IN LENGTH.
5. LOT CORNERS HAVE BEEN MARKED WITH STEEL BARS ONE-HALF (1/2) INCH IN DIAMETER, AND EIGHTEEN (18) INCHES IN LENGTH.
6. (R) INDICATES A RADIAL LINE.
7. (NR) INDICATES A NON RADIAL LINE.
8. L INDICATES A RIGHT ANGLE.
9. BEARINGS ARE IN RELATION TO THE TRUE MERIDIAN, AS DETERMINED BY POLARIS OBSERVATION, DATE 11/13/1984.
10. ■ DENOTES FOUND MONUMENT 1/2 INCH STEEL BAR ENCASED IN 4 INCHES DIAMETER CONCRETE.

THIS PLAT IS SUBJECT TO RESTRICTIONS AS REQUIRED BY ACT 288 OF 1967 AS AMENDED ON CERTAIN LOTS WITH RESPECT TO THE REQUIREMENTS OF THE MICHIGAN DEPARTMENT OF NATURAL RESOURCES AND/OR THE MICHIGAN DEPARTMENT OF PUBLIC HEALTH, WHICH ARE RECORDED IN LIBER Zoc 7, PAGES 632-671 OF RECORDS OF THIS COUNTY.



Robert D. Kohn

Giffels-Webster Engineers Inc.
ENGINEERS - SURVEYORS - PLANNERS
2871 BOND STREET ROCHESTER HILLS MICHIGAN
(810) 852-3100

CURVE DATA

CURVE	ARC	RADIUS	CENTRAL ANGLE	CHORD	CHORD BEARING
4	87.76'	217.00'	23° 10' 21"	87.17'	N 13° 24' 50" W
5	114.46'	283.00'	23° 10' 21"	113.68'	N 13° 24' 50" W
6	203.77'	467.00'	25° 00' 00"	202.16'	N 12° 30' 00" W
7	232.57'	533.00'	25° 00' 00"	230.72'	N 12° 30' 00" W

CENTER OF SEC. 36
T-2-N, R-5-E
(NOT SET - IN LAKE)

MEANDER CORNER
L.C.R.C. L.S.C. 1688

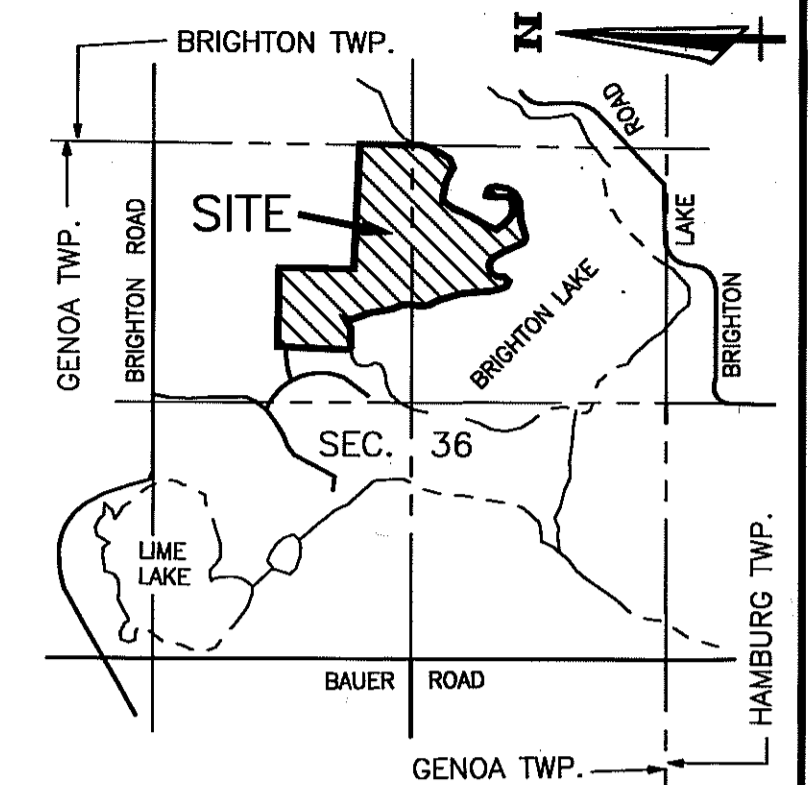
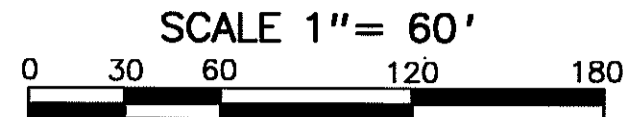
100 YEAR FLOODPLAIN CONTOUR ELEV. 901.9
AS ESTABLISHED BY DEPARTMENT OF NATURAL
RESOURCES N. G. V. DATUM. DATE 11-9-89.
BRIGHTON LAKE
CONTROLLED WATER SURFACE
ELEV. 900.3 N.G.V.D.

UNPLATTED

PINE CREEK RIDGE SUBDIVISION NO. 4

A PART OF THE NE. 1/4 & SE. 1/4 OF SECTION 36, T-2-N, R-5-E,
GENOA TOWNSHIP, LIVINGSTON COUNTY, MICHIGAN

LIBER PAGE
SHEET 6 OF 9 SHEETS



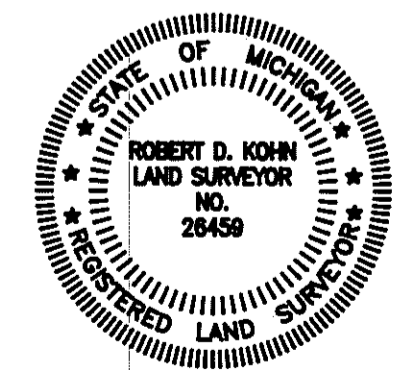
LOCATION MAP

SCALE 1" = 2000'

LEGEND

1. ALL DIMENSIONS ARE GIVEN IN FEET.
2. CURVILINEAR MEASUREMENTS ARE ARC DISTANCES.
3. CONCRETE MONUMENTS HAVE BEEN PLACED AT ALL POINTS MARKED "o".
4. CONCRETE MONUMENTS ARE STEEL BARS ONE-HALF (1/2) INCH IN DIAMETER AND THIRTY SIX (36) INCHES IN LENGTH, ENCASED IN A CONCRETE CYLINDER FOUR (4) INCHES IN DIAMETER, AND THIRTY SIX (36) INCHES IN LENGTH.
5. LOT CORNERS HAVE BEEN MARKED WITH STEEL BARS ONE-HALF (1/2) INCH IN DIAMETER, AND EIGHTEEN (18) INCHES IN LENGTH.
6. (R) INDICATES A RADIAL LINE.
7. (NR) INDICATES A NON RADIAL LINE.
8. ∟ INDICATES A RIGHT ANGLE.
9. BEARINGS ARE IN RELATION TO THE TRUE MERIDIAN, AS DETERMINED BY POLARIS OBSERVATION, DATE 11/13/1984.

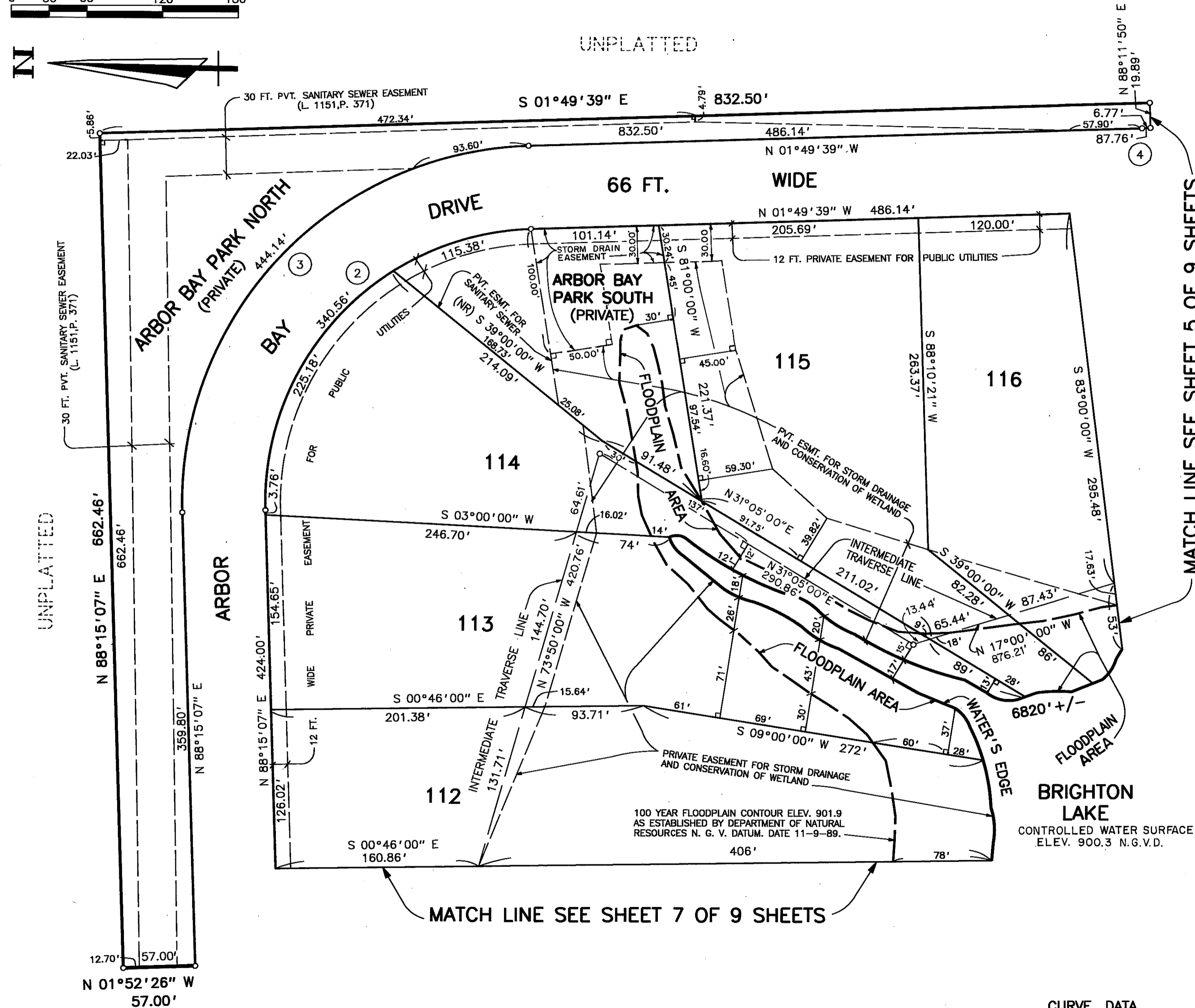
THIS PLAT IS SUBJECT TO RESTRICTIONS AS REQUIRED BY ACT 288 OF 1967 AS AMENDED ON CERTAIN LOTS WITH RESPECT TO THE REQUIREMENTS OF THE MICHIGAN DEPARTMENT OF NATURAL RESOURCES AND/OR THE MICHIGAN DEPARTMENT OF PUBLIC HEALTH, WHICH ARE RECORDED IN LIBER 607, PAGES 632-671 OF RECORDS OF THIS COUNTY.



Robert D. Kohn

Giffels-Webster Engineers Inc.

ENGINEERS - SURVEYORS - PLANNERS
2871 BOND STREET, ROCHESTER HILLS, MICHIGAN
(810) 852-3100



MATCH LINE SEE SHEET 5 OF 9 SHEETS

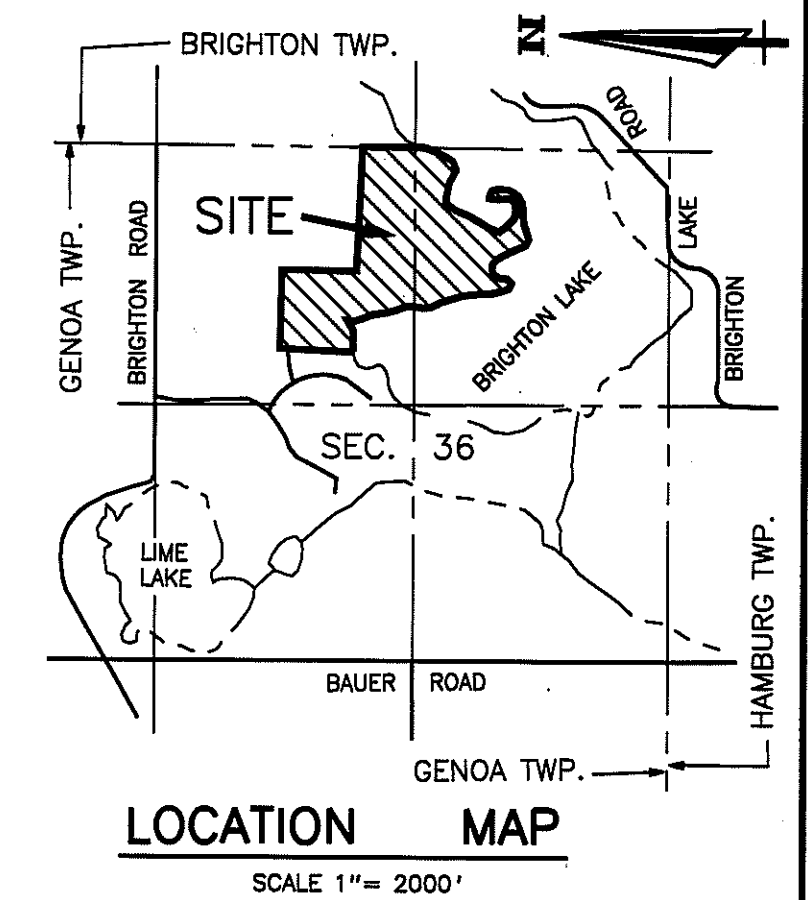
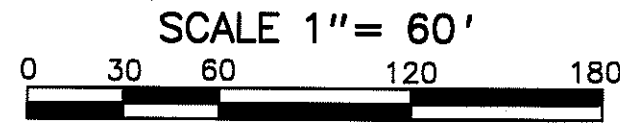
MATCH LINE SEE SHEET 7 OF 9 SHEETS

CURVE DATA

CURVE	ARC	RADIUS	CENTRAL ANGLE	CHORD	CHORD BEARING
2	340.56'	217.00'	89° 55' 14"	306.67'	N 46° 47' 16" W
3	444.14'	283.00'	89° 55' 14"	399.94'	N 46° 47' 16" W
4	87.76'	217.00'	23° 10' 21"	87.17'	N 13° 24' 50" W

PINE CREEK RIDGE SUBDIVISION NO. 4

A PART OF THE NE. 1/4 & SE. 1/4 OF SECTION 36, T-2-N, R-5-E,
GENOA TOWNSHIP, LIVINGSTON COUNTY, MICHIGAN

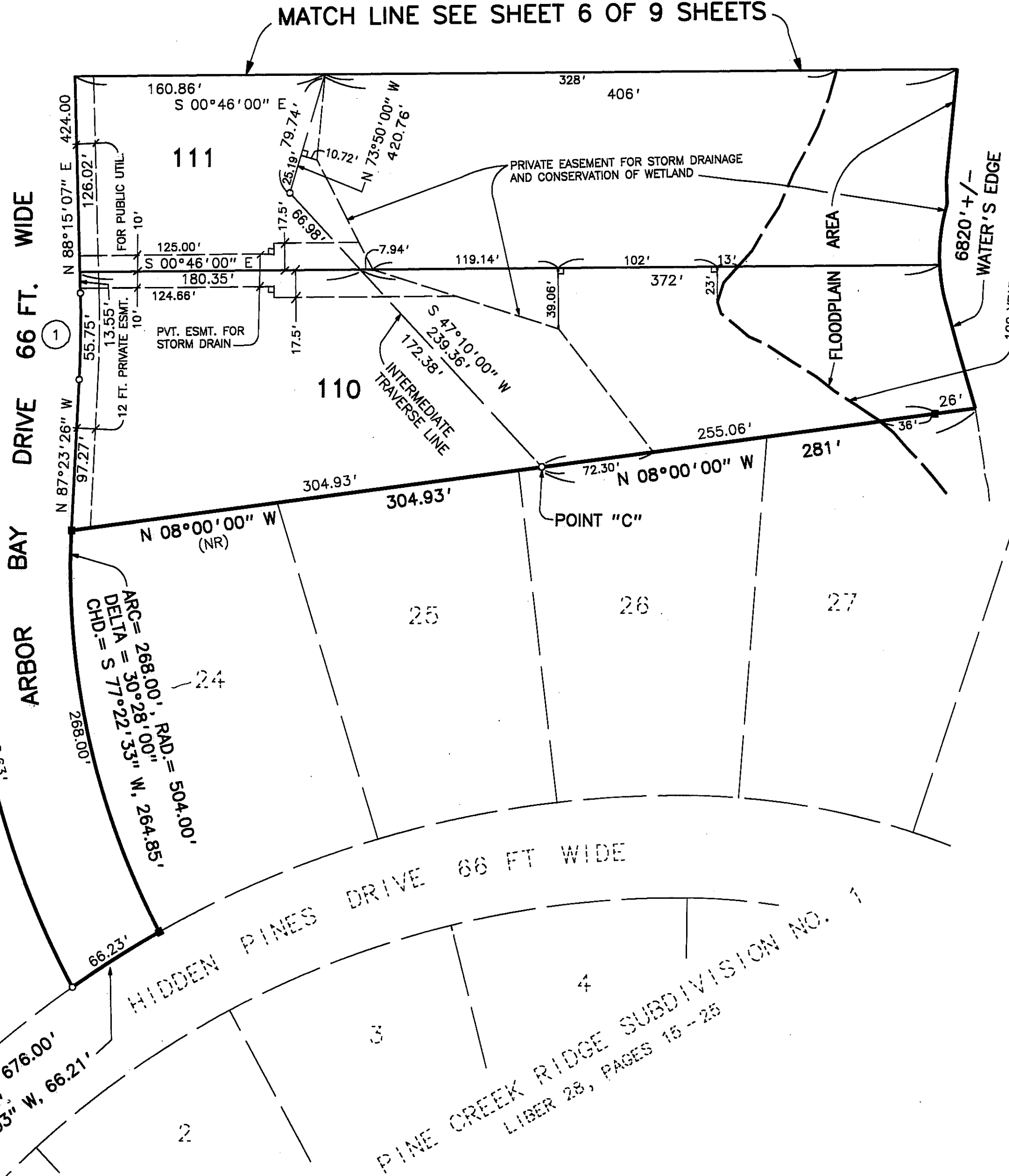


ARC= 50.73', RAD.= 667.00'
DELTA = 04°21'27"
CHD.=S 89°34'10" E, 50.71'

UNPLATTED

ARC= 308.65', RAD.= 570.00'
DELTA = 31°01'22" E, 304.87'
CHD.= N 77°05'52" E, 304.87'

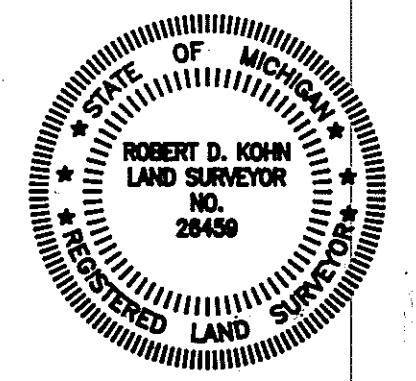
ARC= 66.23', RAD.= 676.00'
DELTA = 05°36'49"
CHD.= N 32°39'03" W, 66.21'



100 YEAR FLOODPLAIN CONTOUR ELEV. 901.9
AS ESTABLISHED BY DEPARTMENT OF NATURAL
RESOURCES N. G. V. DATUM, DATE 11-9-89.
BRIGHTON LAKE
CONTROLLED WATER SURFACE
ELEV. 900.3 N.G.V.D.

- LEGEND**
1. ALL DIMENSIONS ARE GIVEN IN FEET.
 2. CURVILINEAR MEASUREMENTS ARE ARC DISTANCES.
 3. CONCRETE MONUMENTS HAVE BEEN PLACED AT ALL POINTS MARKED "o".
 4. CONCRETE MONUMENTS ARE STEEL BARS ONE-HALF (1/2) INCH IN DIAMETER AND THIRTY SIX (36) INCHES IN LENGTH, ENCASED IN A CONCRETE CYLINDER FOUR (4) INCHES IN DIAMETER, AND THIRTY SIX (36) INCHES IN LENGTH.
 5. LOT CORNERS HAVE BEEN MARKED WITH STEEL BARS ONE-HALF (1/2) INCH IN DIAMETER, AND EIGHTEEN (18) INCHES IN LENGTH.
 6. (R) INDICATES A RADIAL LINE.
 7. (NR) INDICATES A NON RADIAL LINE.
 8. L INDICATES A RIGHT ANGLE.
 9. BEARINGS ARE IN RELATION TO THE TRUE MERIDIAN, AS DETERMINED BY POLARIS OBSERVATION, DATE 11/13/1984.
 10. ■ DENOTES FOUND MONUMENT 1/2 INCH STEEL BAR ENCASED IN 4 INCHES DIAMETER CONCRETE.

THIS PLAT IS SUBJECT TO RESTRICTIONS AS REQUIRED BY ACT 288 OF 1967 AS AMENDED ON CERTAIN LOTS WITH RESPECT TO THE REQUIREMENTS OF THE MICHIGAN DEPARTMENT OF NATURAL RESOURCES AND/OR THE MICHIGAN DEPARTMENT OF PUBLIC HEALTH, WHICH ARE RECORDED IN LIBER 207, PAGES 632-671 OF RECORDS OF THIS COUNTY.



Robert D. Kohn

CURVE DATA

CURVE	ARC	RADIUS	CENTRAL ANGLE	CHORD	CHORD BEARING
1	55.75'	733.00'	04° 21' 27"	55.73'	N 89° 34' 10" W

Giffels-Webster Engineers Inc.
ENGINEERS - SURVEYORS - PLANNERS
2871 BOND STREET ROCHESTER HILLS MICHIGAN
(810) 852-3100