

PINE CREEK RIDGE SUBDIVISION NO. 3

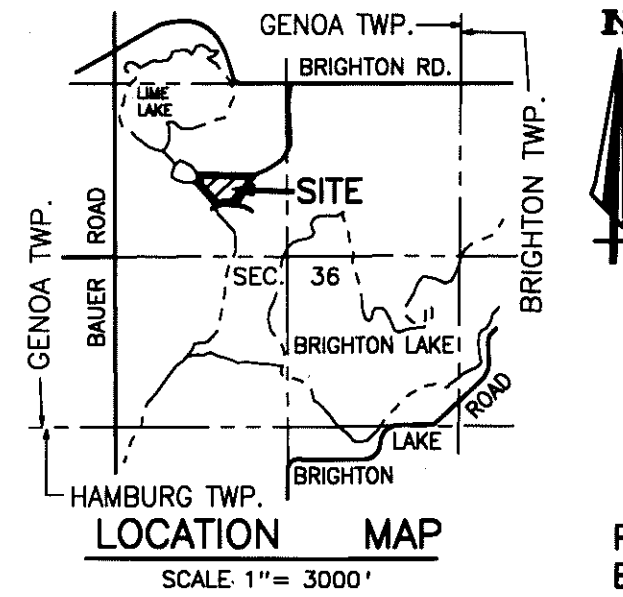
A PART OF THE NORTHWEST 1/4 OF SECTION 36, T-2-N, R-5-E,
GENOA TOWNSHIP, LIVINGSTON COUNTY, MICHIGAN

NORTH 1/4 COR.
OF SECTION 36
T-2-N, R-5-E
L.C.R.C. L.S.C. 1358

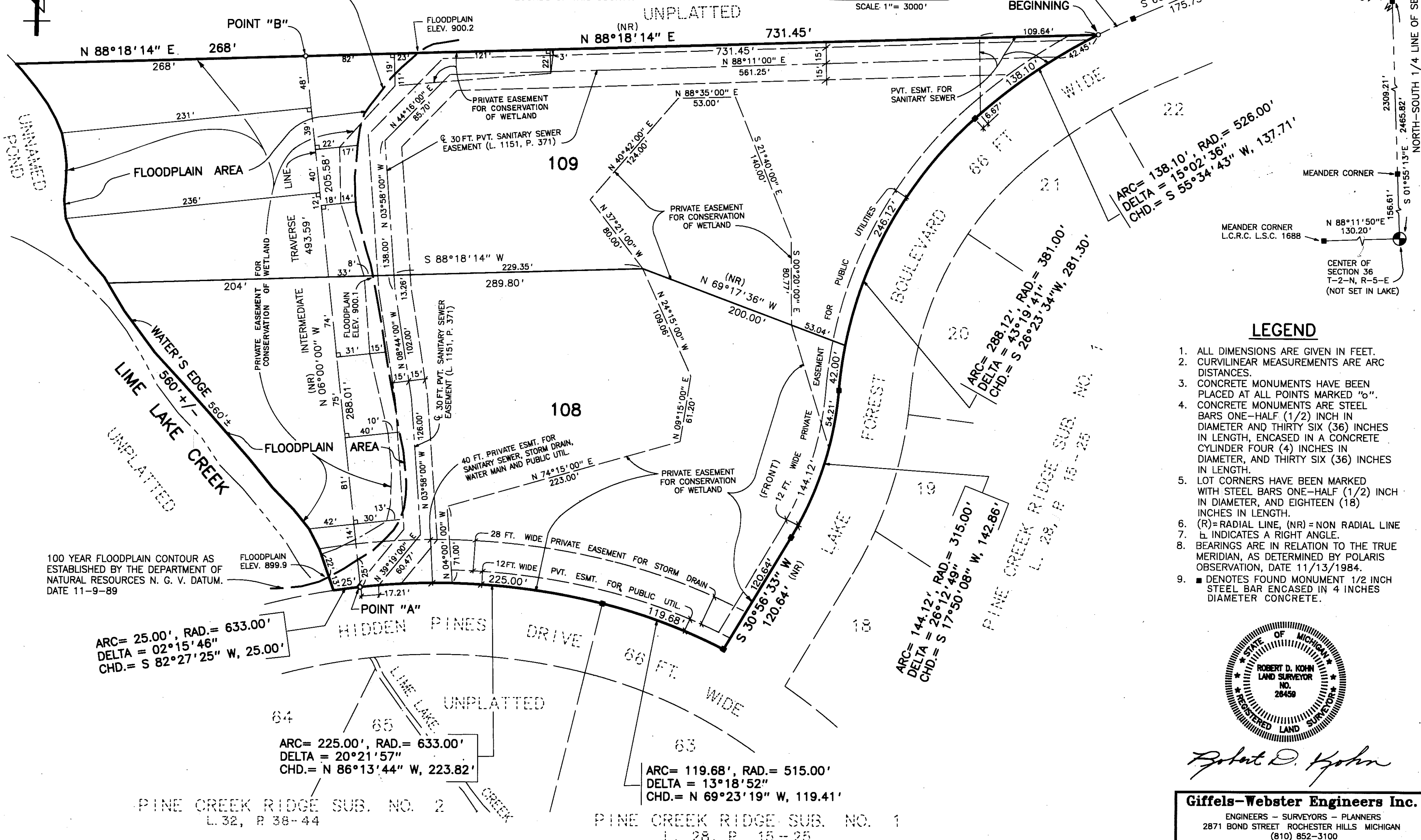


100 YEAR FLOODPLAIN CONTOUR AS
ESTABLISHED BY THE DEPARTMENT OF
NATURAL RESOURCES N. G. V. DATUM.
DATE 11-9-89

THIS PLAT IS SUBJECT TO RESTRICTIONS AS
REQUIRED BY ACT 288 OF 1967 AS AMENDED
ON CERTAIN LOTS WITH RESPECT TO THE
REQUIREMENTS OF THE MICHIGAN DEPARTMENT OF
NATURAL RESOURCES AND/OR THE MICHIGAN
DEPARTMENT OF PUBLIC HEALTH, WHICH ARE
RECORDED IN LIBER 1990, PAGES 12-147
OF RECORDS OF THIS COUNTY.



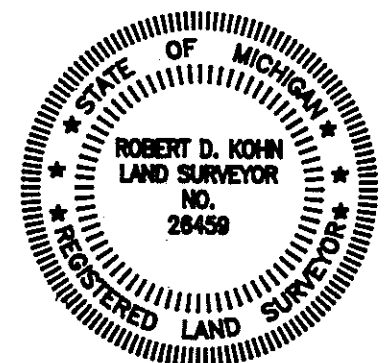
POINT OF
BEGINNING



100 YEAR FLOODPLAIN CONTOUR AS
ESTABLISHED BY THE DEPARTMENT OF
NATURAL RESOURCES N. G. V. DATUM.
DATE 11-9-89

LEGEND

1. ALL DIMENSIONS ARE GIVEN IN FEET.
2. CURVILINEAR MEASUREMENTS ARE ARC DISTANCES.
3. CONCRETE MONUMENTS HAVE BEEN PLACED AT ALL POINTS MARKED "O".
4. CONCRETE MONUMENTS ARE STEEL BARS ONE-HALF (1/2) INCH IN DIAMETER AND THIRTY SIX (36) INCHES IN LENGTH, ENCASED IN A CONCRETE CYLINDER FOUR (4) INCHES IN DIAMETER, AND THIRTY SIX (36) INCHES IN LENGTH.
5. LOT CORNERS HAVE BEEN MARKED WITH STEEL BARS ONE-HALF (1/2) INCH IN DIAMETER, AND EIGHTEEN (18) INCHES IN LENGTH.
6. (R)=RADIAL LINE, (NR)=NON RADIAL LINE
7. \perp INDICATES A RIGHT ANGLE.
8. BEARINGS ARE IN RELATION TO THE TRUE MERIDIAN, AS DETERMINED BY POLARIS OBSERVATION, DATE 11/13/1984.
9. \blacksquare DENOTES FOUND MONUMENT 1/2 INCH STEEL BAR ENCASED IN 4 INCHES DIAMETER CONCRETE.



Robert D. Kohn

Giffels-Webster Engineers Inc.
ENGINEERS - SURVEYORS - PLANNERS
2871 BOND STREET ROCHESTER HILLS MICHIGAN
(810) 852-3100

PINE CREEK RIDGE SUB. NO. 2
L. 32, P. 38-44

PINE CREEK RIDGE SUB. NO. 1
L. 28, P. 15-25