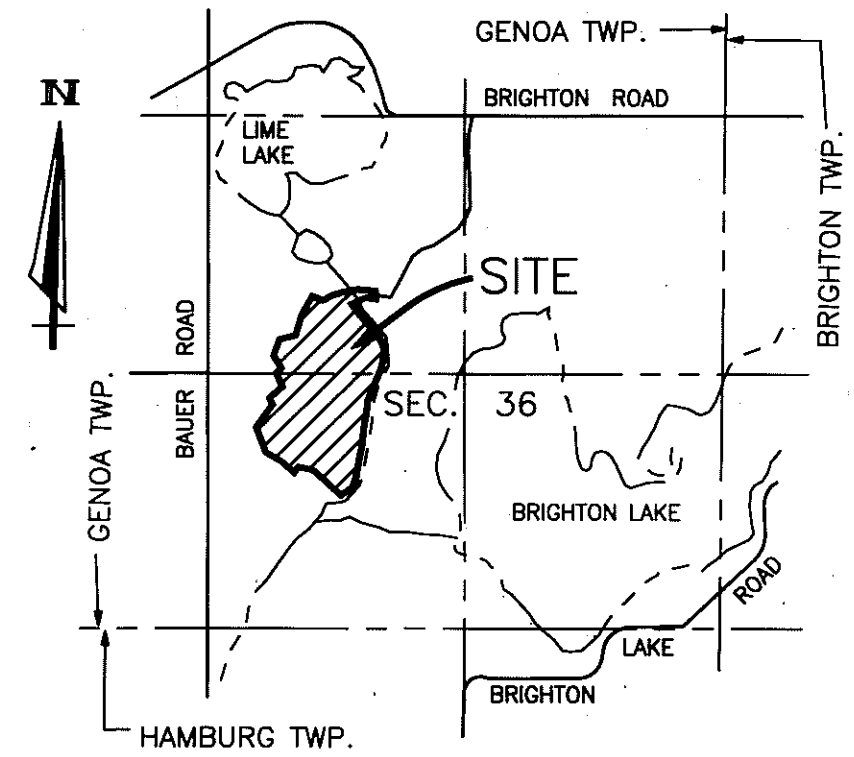


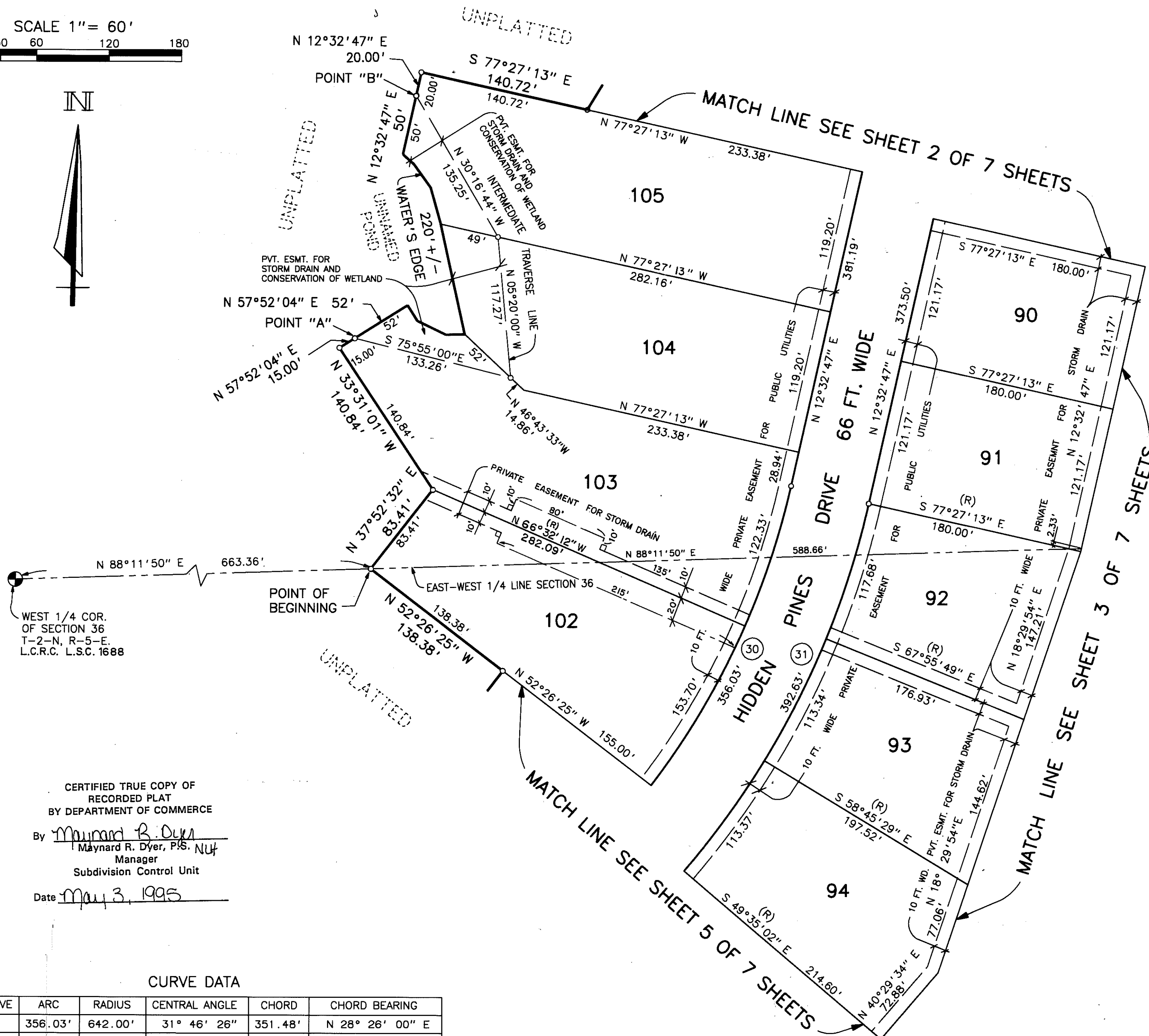
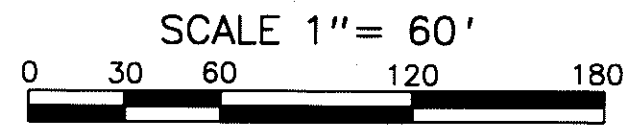
PINE CREEK RIDGE SUBDIVISION NO. 2

A PART OF THE NW. 1/4 & SW. 1/4 OF SECTION 36, T-2-N, R-5-E,
GENOA TOWNSHIP, LIVINGSTON COUNTY, MICHIGAN



LOCATION MAP

SCALE 1" = 2000'



LEGEND

1. ALL DIMENSIONS ARE GIVEN IN FEET.
2. CURVILINEAR MEASUREMENTS ARE ARC DISTANCES.
3. CONCRETE MONUMENTS HAVE BEEN PLACED AT ALL POINTS MARKED "o".
4. CONCRETE MONUMENTS ARE STEEL BARS ONE-HALF (1/2) INCH IN DIAMETER AND THIRTY SIX (36) INCHES IN LENGTH, ENCASED IN A CONCRETE CYLINDER FOUR (4) INCHES IN DIAMETER, AND THIRTY SIX (36) INCHES IN LENGTH.
5. LOT CORNERS HAVE BEEN MARKED WITH STEEL BARS ONE-HALF (1/2) INCH IN DIAMETER, AND EIGHTEEN (18) INCHES IN LENGTH.
6. (R) INDICATES A RADIAL LINE.
7. ∟ INDICATES A RIGHT ANGLE.
8. BEARINGS ARE IN RELATION TO THE TRUE MERIDIAN, AS DETERMINED BY POLARIS OBSERVATION, DATE 11/13/1984.

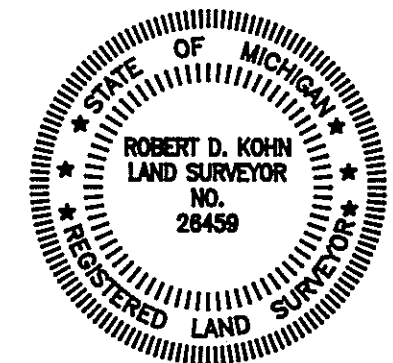
THIS PLAT IS SUBJECT TO RESTRICTIONS AS REQUIRED BY ACT 288 OF 1967 AS AMENDED ON CERTAIN LOTS WITH RESPECT TO THE REQUIREMENTS OF THE MICHIGAN DEPARTMENT OF NATURAL RESOURCES AND/OR THE MICHIGAN DEPARTMENT OF PUBLIC HEALTH, WHICH ARE RECORDED IN LIBER 1912, PAGES 580-624 OF RECORDS OF THIS COUNTY.

WEST 1/4 COR.
OF SECTION 36
T-2-N, R-5-E.
L.C.R.C. L.S.C. 1688

CERTIFIED TRUE COPY OF
RECORDED PLAT
BY DEPARTMENT OF COMMERCE
By Maynard R. Dyer
Maynard R. Dyer, P.S., NUT
Manager
Subdivision Control Unit
Date May 3, 1995

CURVE DATA

CURVE	ARC	RADIUS	CENTRAL ANGLE	CHORD	CHORD BEARING
30	356.03'	642.00'	31° 46' 26"	351.48'	N 28° 26' 00" E
31	392.63'	708.00'	31° 46' 26"	387.62'	N 28° 26' 00" E

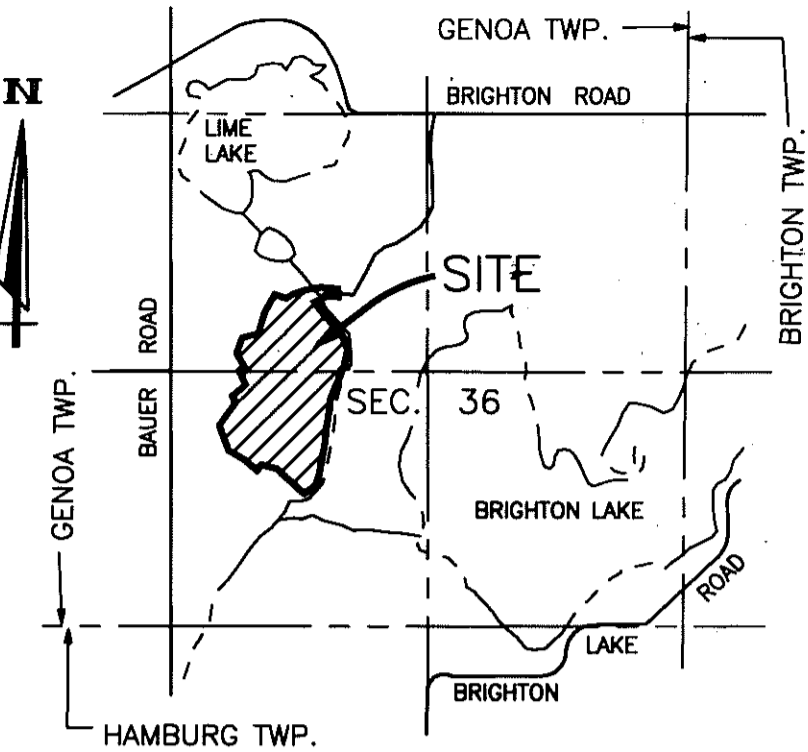
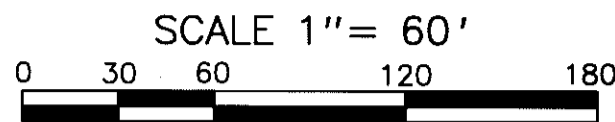


Robert D. Kohn

Giffels-Webster Engineers Inc.
ENGINEERS - SURVEYORS - PLANNERS
2871 BOND STREET ROCHESTER HILLS MICHIGAN
(810) 852-3100

PINE CREEK RIDGE SUBDIVISION NO. 2

A PART OF THE NW. 1/4 & SW. 1/4 OF SECTION 36, T-2-N, R-5-E,
GENOA TOWNSHIP, LIVINGSTON COUNTY, MICHIGAN

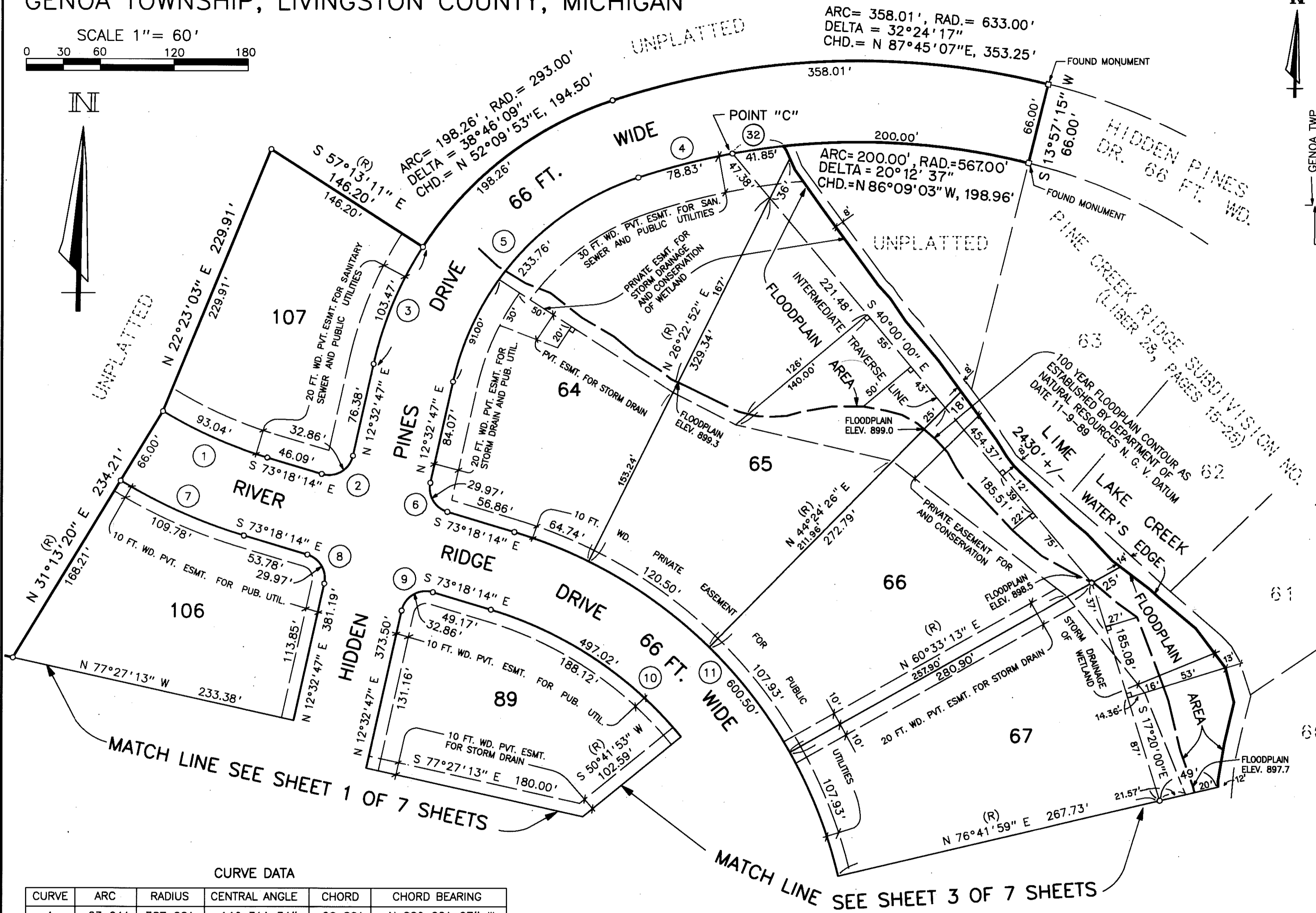


LOCATION MAP

SCALE 1" = 2000'

LEGEND

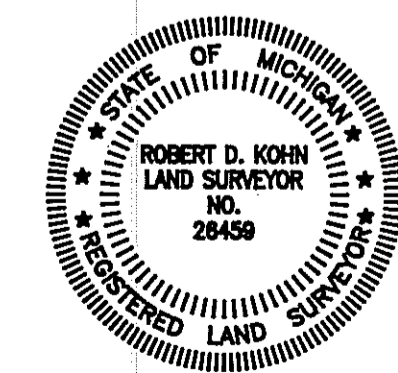
1. ALL DIMENSIONS ARE GIVEN IN FEET.
2. CURVILINEAR MEASUREMENTS ARE ARC DISTANCES.
3. CONCRETE MONUMENTS HAVE BEEN PLACED AT ALL POINTS MARKED "o".
4. CONCRETE MONUMENTS ARE STEEL BARS ONE-HALF (1/2) INCH IN DIAMETER AND THIRTY SIX (36) INCHES IN LENGTH, ENCASED IN A CONCRETE CYLINDER FOUR (4) INCHES IN DIAMETER, AND THIRTY SIX (36) INCHES IN LENGTH.
5. LOT CORNERS HAVE BEEN MARKED WITH STEEL BARS ONE-HALF (1/2) INCH IN DIAMETER, AND EIGHTEEN (18) INCHES IN LENGTH.
6. (R) INDICATES A RADIAL LINE.
7. L INDICATES A RIGHT ANGLE.
8. BEARINGS ARE IN RELATION TO THE TRUE MERIDIAN, AS DETERMINED BY POLARIS OBSERVATION, DATE 11/13/1984.



CURVE DATA

CURVE	ARC	RADIUS	CENTRAL ANGLE	CHORD	CHORD BEARING
1	93.04'	367.00'	14° 31' 34"	92.80'	N 66° 02' 27" W
2	32.86'	20.00'	94° 08' 59"	29.29'	N 59° 37' 16" E
3	103.47'	293.00'	20° 14' 02"	102.94'	N 22° 39' 48" E
4	78.83'	567.00'	07° 57' 58"	78.77'	N 75° 31' 57" E
5	233.76'	227.00'	59° 00' 11"	223.57'	N 42° 02' 52" E
6	29.97'	20.00'	85° 51' 01"	27.24'	N 30° 22' 44" W
7	109.78'	433.00'	14° 31' 34"	109.48'	N 66° 02' 27" W
8	29.97'	20.00'	85° 51' 01"	27.24'	N 30° 22' 44" W
9	32.86'	20.00'	94° 08' 59"	29.29'	N 59° 37' 16" E
10	497.02'	317.00'	89° 50' 00"	447.65'	N 28° 23' 14" W
11	600.50'	383.00'	89° 50' 00"	540.86'	N 28° 23' 14" W
32	41.85'	567.00'	04° 13' 43"	41.84'	N 81° 37' 47" E

THIS PLAT IS SUBJECT TO RESTRICTIONS AS REQUIRED BY ACT 288 OF 1967 AS AMENDED ON CERTAIN LOTS WITH RESPECT TO THE REQUIREMENTS OF THE MICHIGAN DEPARTMENT OF NATURAL RESOURCES AND/OR THE MICHIGAN DEPARTMENT OF PUBLIC HEALTH, WHICH ARE RECORDED IN LIBER 1912, PAGES 580-624 OF RECORDS OF THIS COUNTY.



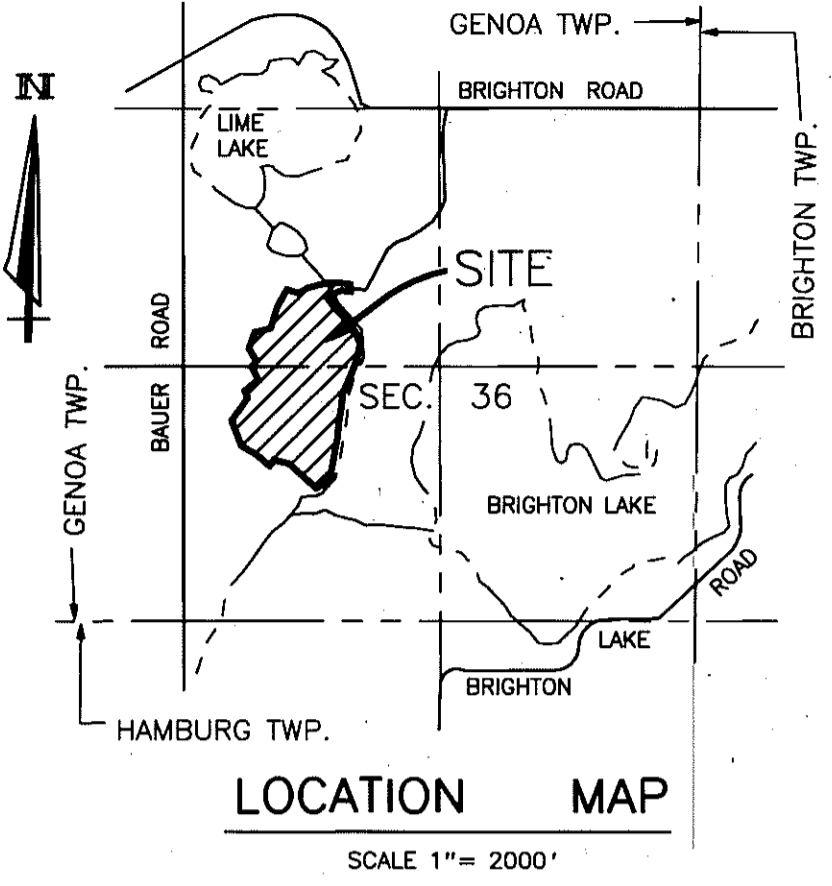
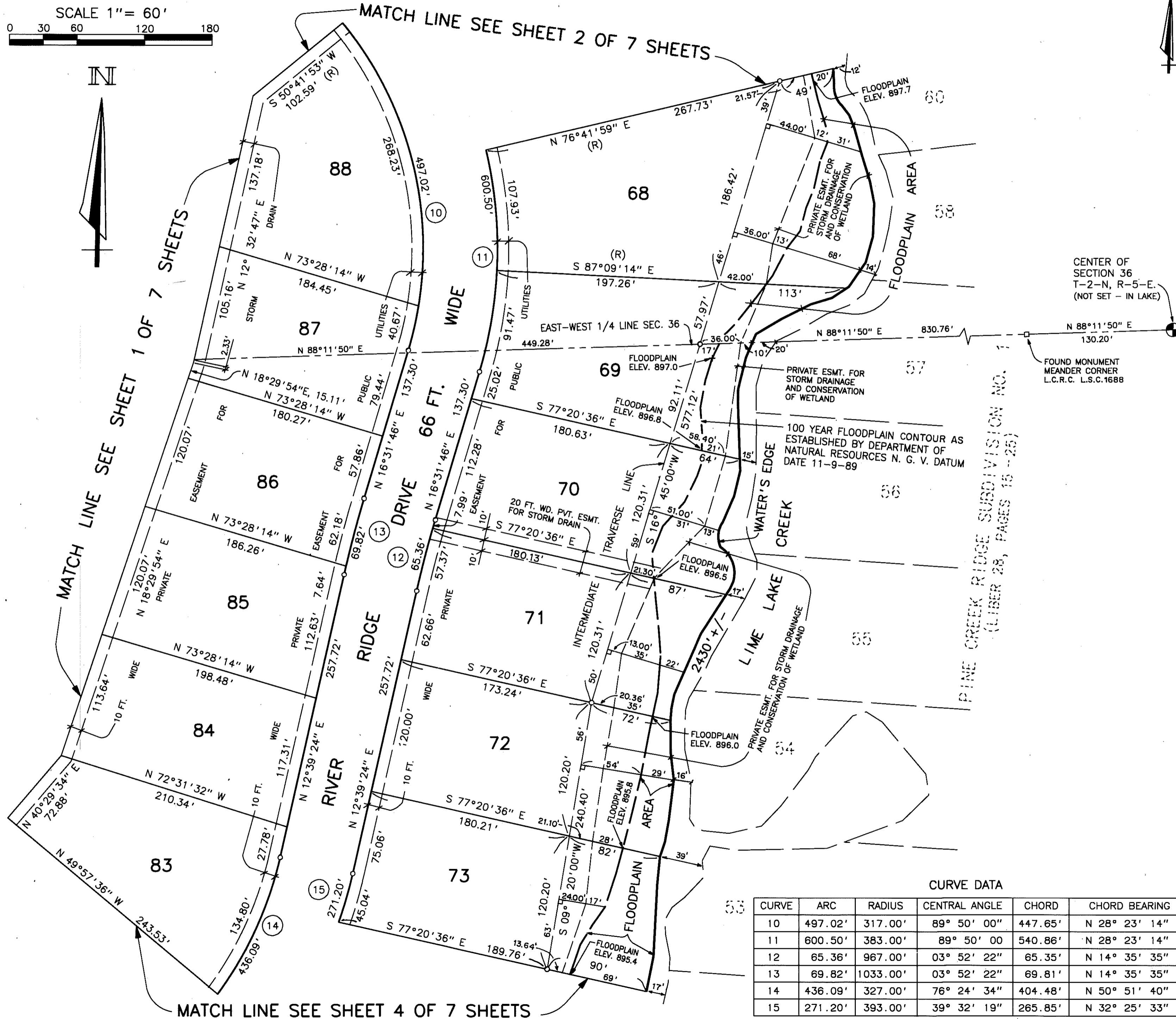
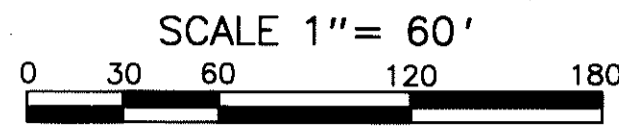
Robert D. Kohn

Giffels-Webster Engineers Inc.

ENGINEERS - SURVEYORS - PLANNERS
2871 BOND STREET ROCHESTER HILLS MICHIGAN
(810) 852-3100

PINE CREEK RIDGE SUBDIVISION NO. 2

A PART OF THE NW. 1/4 & SW. 1/4 OF SECTION 36, T-2-N, R-5-E,
GENOA TOWNSHIP, LIVINGSTON COUNTY, MICHIGAN



CENTER OF SECTION 36
T-2-N, R-5-E.
(NOT SET - IN LAKE)

FOUND MONUMENT
MEANDER CORNER
L.C.R.C. L.S.C.1688

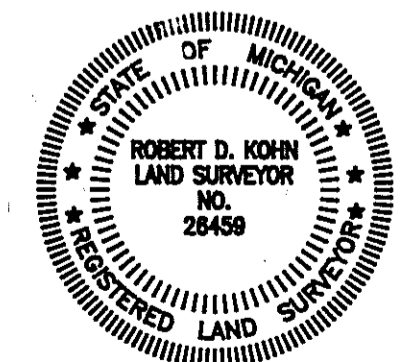
LEGEND

1. ALL DIMENSIONS ARE GIVEN IN FEET.
2. CURVILINEAR MEASUREMENTS ARE ARC DISTANCES.
3. CONCRETE MONUMENTS HAVE BEEN PLACED AT ALL POINTS MARKED "O".
4. CONCRETE MONUMENTS ARE STEEL BARS ONE-HALF (1/2) INCH IN DIAMETER AND THIRTY SIX (36) INCHES IN LENGTH, ENCASED IN A CONCRETE CYLINDER FOUR (4) INCHES IN DIAMETER, AND THIRTY SIX (36) INCHES IN LENGTH.
5. LOT CORNERS HAVE BEEN MARKED WITH STEEL BARS ONE-HALF (1/2) INCH IN DIAMETER, AND EIGHTEEN (18) INCHES IN LENGTH.
6. (R) INDICATES A RADIAL LINE.
7. L INDICATES A RIGHT ANGLE.
8. BEARINGS ARE IN RELATION TO THE TRUE MERIDIAN, AS DETERMINED BY POLARIS OBSERVATION, DATE 11/13/1984.

THIS PLAT IS SUBJECT TO RESTRICTIONS AS REQUIRED BY ACT 288 OF 1967 AS AMENDED ON CERTAIN LOTS WITH RESPECT TO THE REQUIREMENTS OF THE MICHIGAN DEPARTMENT OF NATURAL RESOURCES AND/OR THE MICHIGAN DEPARTMENT OF PUBLIC HEALTH, WHICH ARE RECORDED IN LIBER 1912, PAGES 330-624 OF RECORDS OF THIS COUNTY.

CURVE DATA

CURVE	ARC	RADIUS	CENTRAL ANGLE	CHORD	CHORD BEARING
10	497.02'	317.00'	89° 50' 00"	447.65'	N 28° 23' 14" W
11	600.50'	383.00'	89° 50' 00"	540.86'	N 28° 23' 14" W
12	65.36'	967.00'	03° 52' 22"	65.35'	N 14° 35' 35" E
13	69.82'	1033.00'	03° 52' 22"	69.81'	N 14° 35' 35" E
14	436.09'	327.00'	76° 24' 34"	404.48'	N 50° 51' 40" E
15	271.20'	393.00'	39° 32' 19"	265.85'	N 32° 25' 33" E

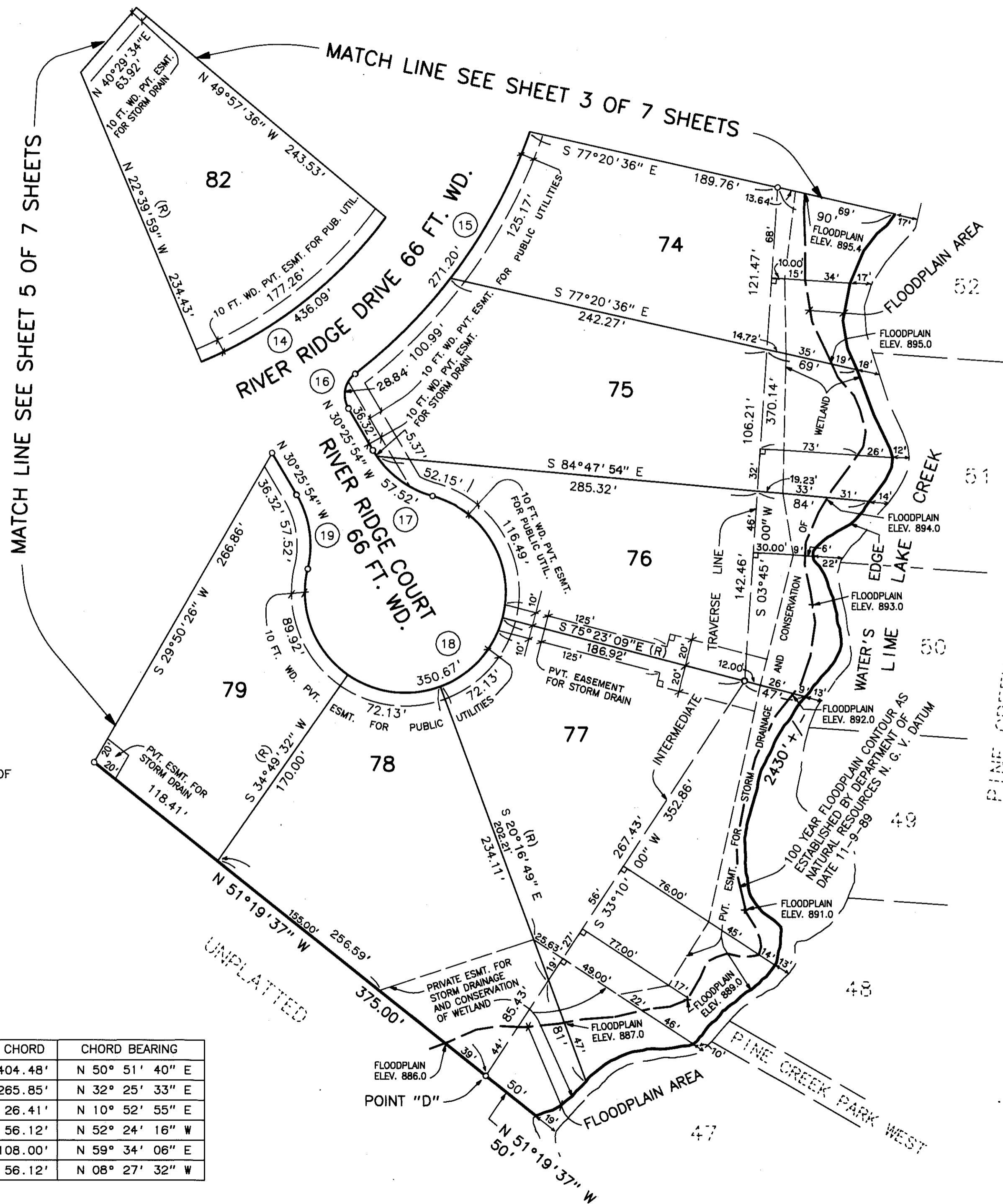
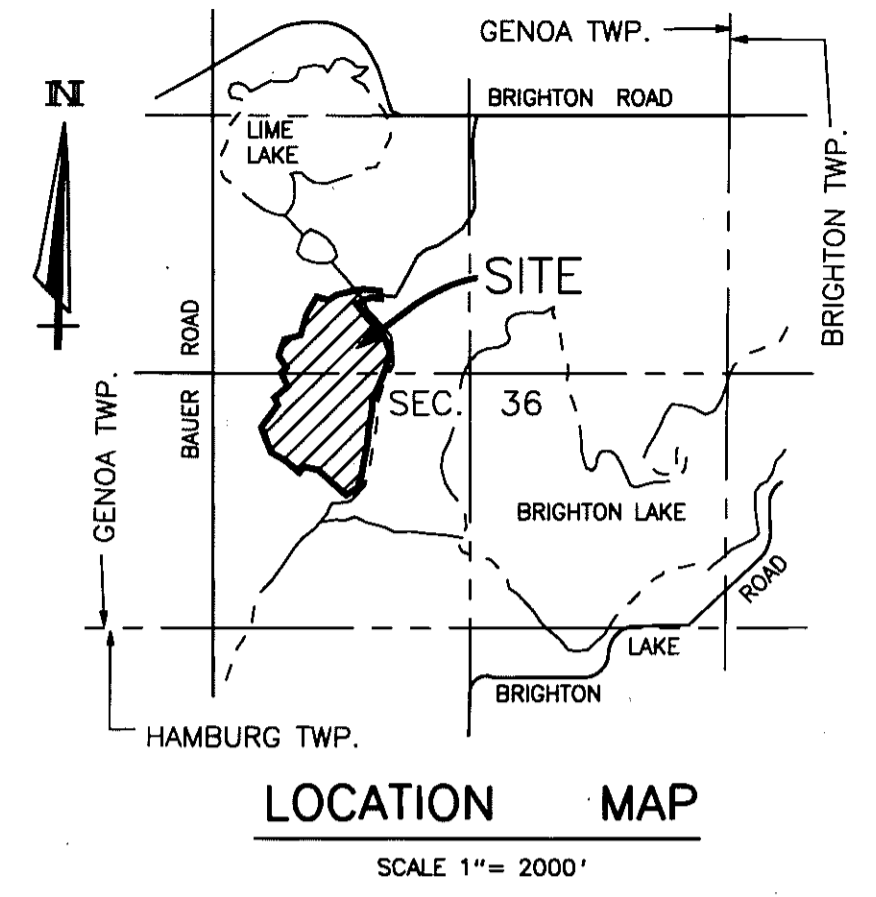
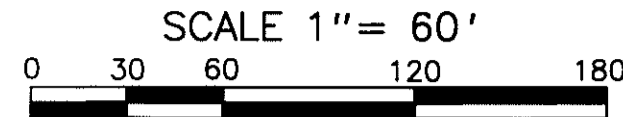


Robert D. Kohn

Giffels-Webster Engineers Inc.
ENGINEERS - SURVEYORS - PLANNERS
2871 BOND STREET ROCHESTER HILLS MICHIGAN
(810) 852-3100

PINE CREEK RIDGE SUBDIVISION NO. 2

A PART OF THE NW. 1/4 & SW. 1/4 OF SECTION 36, T-2-N, R-5-E,
GENOA TOWNSHIP, LIVINGSTON COUNTY, MICHIGAN

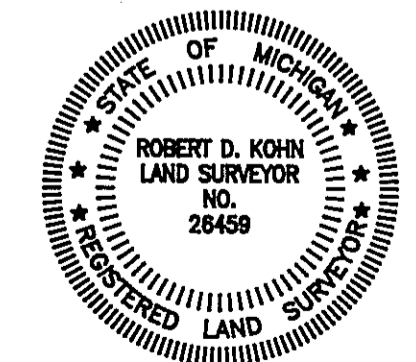


THIS PLAT IS SUBJECT TO RESTRICTIONS AS REQUIRED BY ACT 288 OF 1967 AS AMENDED ON CERTAIN LOTS WITH RESPECT TO THE REQUIREMENTS OF THE MICHIGAN DEPARTMENT OF NATURAL RESOURCES AND/OR THE MICHIGAN DEPARTMENT OF PUBLIC HEALTH, WHICH ARE RECORDED IN LIBER 1912, PAGES 580-624 OF RECORDS OF THIS COUNTY.

- LEGEND**
- ALL DIMENSIONS ARE GIVEN IN FEET.
 - CURVILINEAR MEASUREMENTS ARE ARC DISTANCES.
 - CONCRETE MONUMENTS HAVE BEEN PLACED AT ALL POINTS MARKED "o".
 - CONCRETE MONUMENTS ARE STEEL BARS ONE-HALF (1/2) INCH IN DIAMETER AND THIRTY SIX (36) INCHES IN LENGTH, ENCASED IN A CONCRETE CYLINDER FOUR (4) INCHES IN DIAMETER, AND THIRTY SIX (36) INCHES IN LENGTH.
 - LOT CORNERS HAVE BEEN MARKED WITH STEEL BARS ONE-HALF (1/2) INCH IN DIAMETER, AND EIGHTEEN (18) INCHES IN LENGTH.
 - (R) INDICATES A RADIAL LINE.
 - ⊥ INDICATES A RIGHT ANGLE.
 - BEARINGS ARE IN RELATION TO THE TRUE MERIDIAN, AS DETERMINED BY POLARIS OBSERVATION, DATE 11/13/1984.

CURVE DATA

CURVE	ARC	RADIUS	CENTRAL ANGLE	CHORD	CHORD BEARING
14	436.09'	327.00'	76° 24' 34"	404.48'	N 50° 51' 40" E
15	271.20'	393.00'	39° 32' 19"	265.85'	N 32° 25' 33" E
16	28.84'	20.00'	82° 37' 37"	26.41'	N 10° 52' 55" E
17	57.52'	75.00'	43° 56' 44"	56.12'	N 52° 24' 16" W
18	350.67'	75.00'	267° 53' 28"	108.00'	N 59° 34' 06" E
19	57.52'	75.00'	43° 56' 44"	56.12'	N 08° 27' 32" W

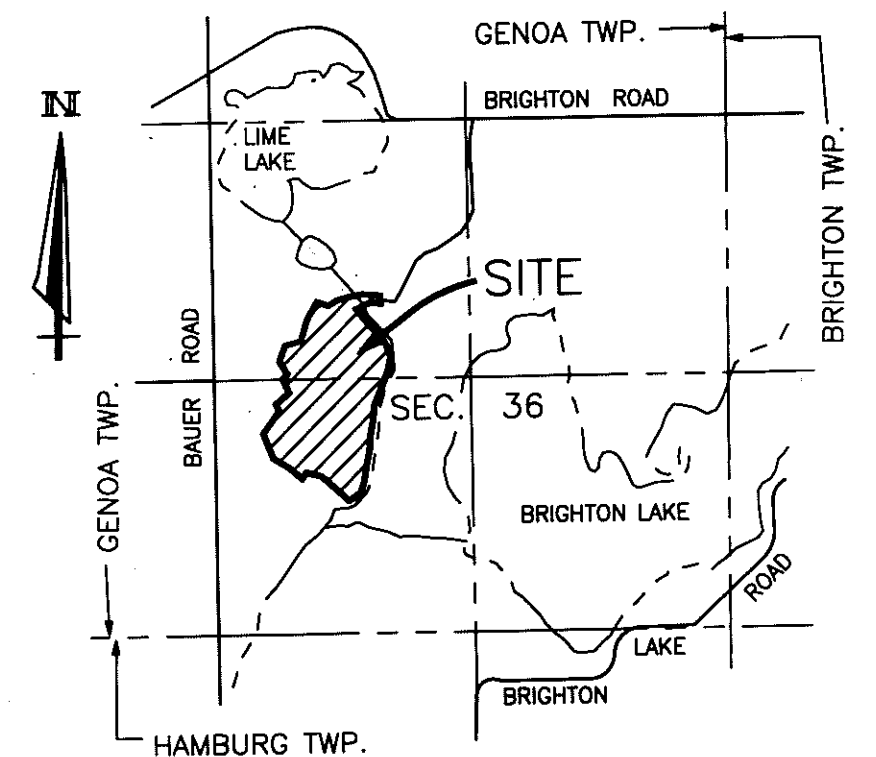
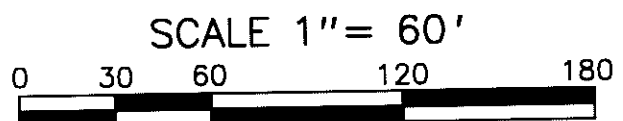


Robert D. Kohn

Giffels-Webster Engineers Inc.
ENGINEERS - SURVEYORS - PLANNERS
2871 BOND STREET ROCHESTER HILLS MICHIGAN
(810) 852-3100

PINE CREEK RIDGE SUBDIVISION NO. 2

A PART OF THE NW. 1/4 & SW. 1/4 OF SECTION 36, T-2-N, R-5-E,
GENOA TOWNSHIP, LIVINGSTON COUNTY, MICHIGAN

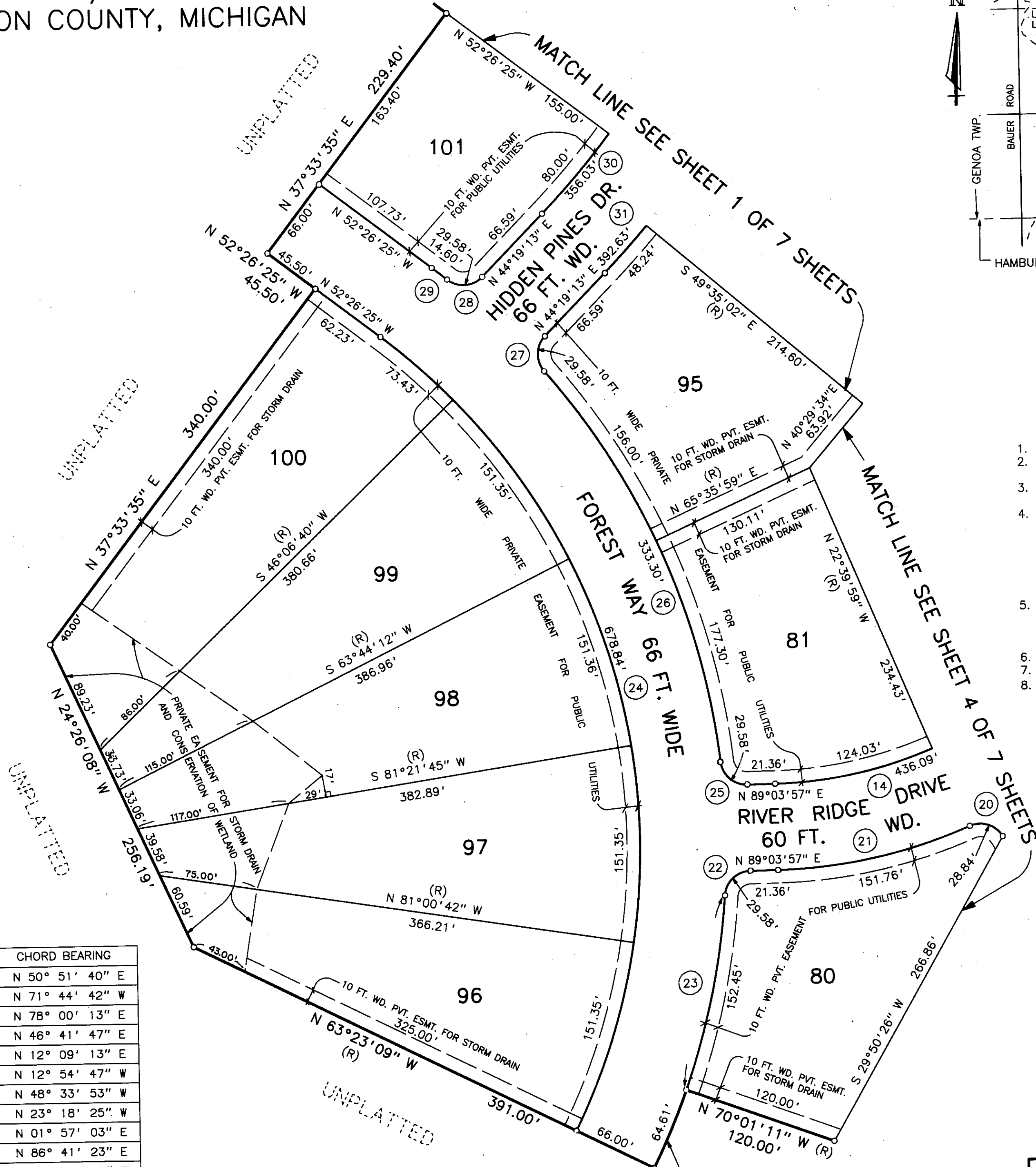


LOCATION MAP
SCALE 1" = 2000'

THIS PLAT IS SUBJECT TO RESTRICTIONS AS REQUIRED BY ACT 288 OF 1967 AS AMENDED ON CERTAIN LOTS WITH RESPECT TO THE REQUIREMENTS OF THE MICHIGAN DEPARTMENT OF NATURAL RESOURCES AND/OR THE MICHIGAN DEPARTMENT OF PUBLIC HEALTH, WHICH ARE RECORDED IN LIBER 912, PAGES 580-604 OF RECORDS OF THIS COUNTY.

LEGEND

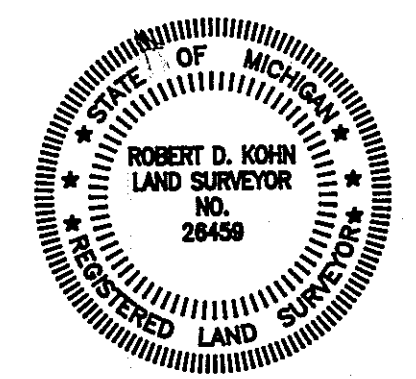
1. ALL DIMENSIONS ARE GIVEN IN FEET.
2. CURVILINEAR MEASUREMENTS ARE ARC DISTANCES.
3. CONCRETE MONUMENTS HAVE BEEN PLACED AT ALL POINTS MARKED "o".
4. CONCRETE MONUMENTS ARE STEEL BARS ONE-HALF (1/2) INCH IN DIAMETER AND THIRTY SIX (36) INCHES IN LENGTH, ENCASED IN A CONCRETE CYLINDER FOUR (4) INCHES IN DIAMETER, AND THIRTY SIX (36) INCHES IN LENGTH.
5. LOT CORNERS HAVE BEEN MARKED WITH STEEL BARS ONE-HALF (1/2) INCH IN DIAMETER, AND EIGHTEEN (18) INCHES IN LENGTH.
6. (R) INDICATES A RADIAL LINE.
7. L INDICATES A RIGHT ANGLE.
8. BEARINGS ARE IN RELATION TO THE TRUE MERIDIAN, AS DETERMINED BY POLARIS OBSERVATION, DATE 11/13/1984.



CURVE DATA

CURVE	ARC	RADIUS	CENTRAL ANGLE	CHORD	CHORD BEARING
14	436.09'	327.00'	76° 24' 34"	404.48'	N 50° 51' 40" E
20	28.84'	20.00'	82° 37' 37"	26.41'	N 71° 44' 42" W
21	151.76'	393.00'	22° 07' 28"	150.81'	N 78° 00' 13" E
22	29.58'	20.00'	84° 44' 20"	26.96'	N 46° 41' 47" E
23	152.45'	558.00'	15° 39' 12"	151.97'	N 12° 09' 13" E
24	678.84'	492.00'	79° 03' 16"	626.26'	N 12° 54' 47" W
25	29.58'	20.00'	84° 44' 20"	26.96'	N 48° 33' 53" W
26	333.30'	558.00'	34° 13' 24"	328.37'	N 23° 18' 25" W
27	29.58'	20.00'	84° 44' 20"	26.96'	N 01° 57' 03" E
28	29.58'	20.00'	84° 44' 20"	26.96'	N 86° 41' 23" E
29	14.60'	558.00'	01° 29' 58"	14.60'	N 51° 41' 26" W
30	356.03'	642.00'	31° 46' 26"	351.48'	N 28° 26' 00" E
31	392.63'	708.00'	31° 46' 26"	387.62'	N 28° 26' 00" E

ARC = 64.61', RAD. = 558.00'
DELTA = 06° 38' 02"
CHD. = S 23° 17' 50" W, 64.57'



Robert D. Kohn

Giffels-Webster Engineers Inc.
ENGINEERS - SURVEYORS - PLANNERS
2871 BOND STREET ROCHESTER HILLS MICHIGAN
(810) 852-3100