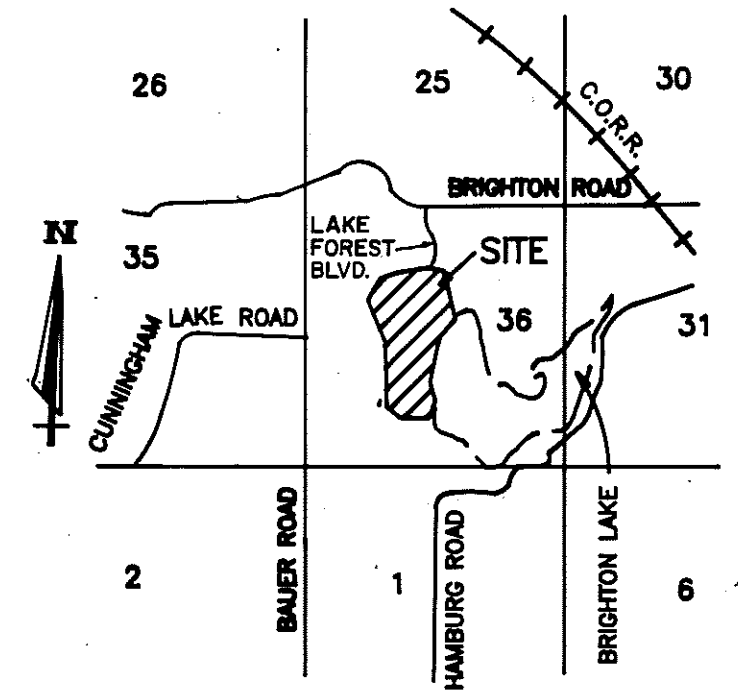
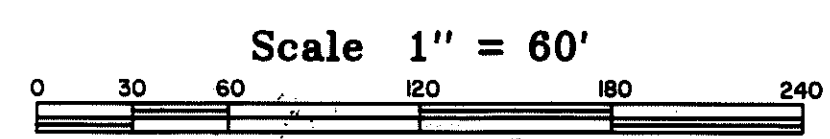
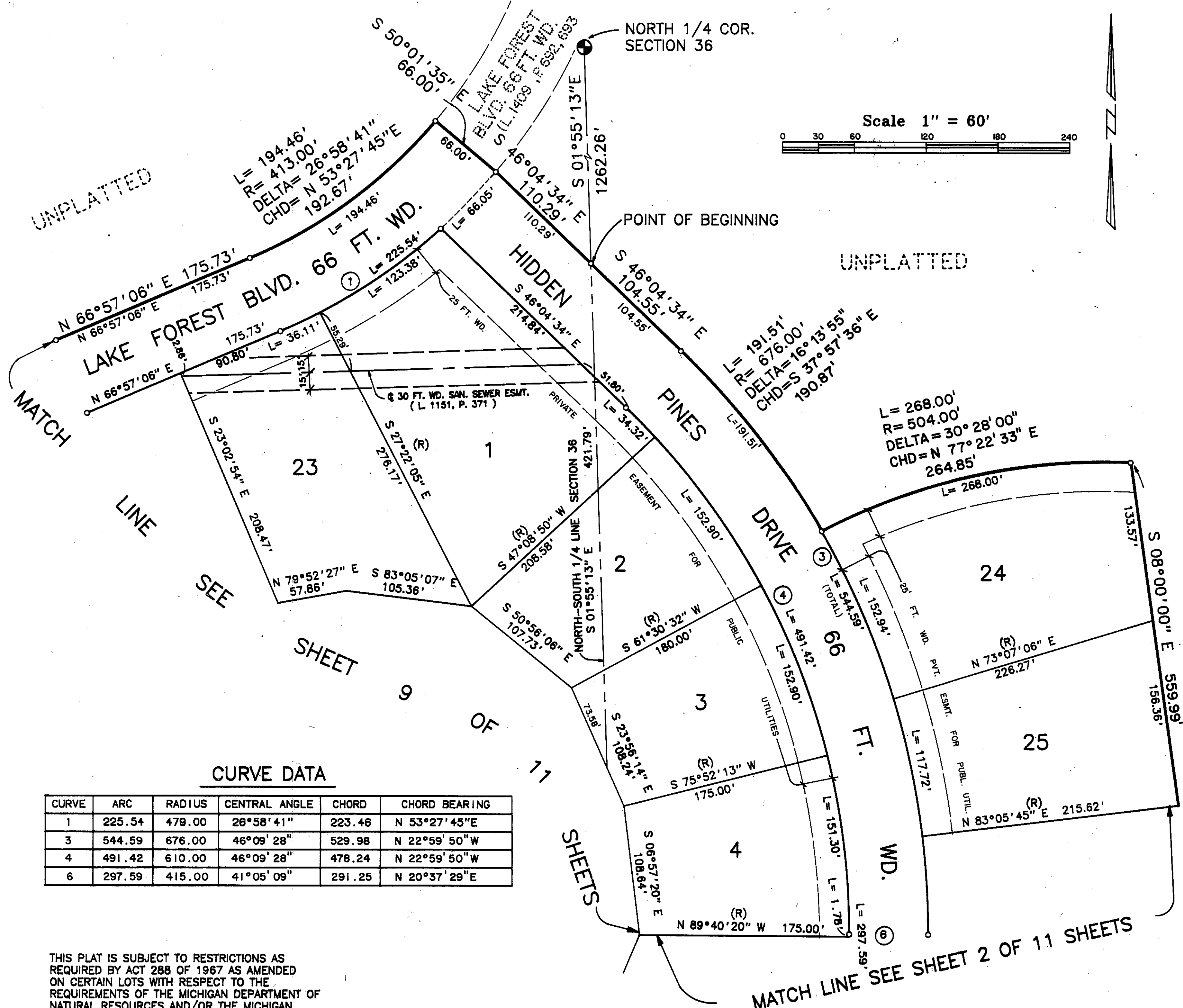


PINE CREEK RIDGE SUBDIVISION NO. 1

PART OF THE NW. 1/4, SW. 1/4 & THE NORTHEAST 1/4 OF SECTION 36,
T. 2 N., R. 5 E., GENOA TOWNSHIP, LIVINGSTON COUNTY, MICHIGAN



LEGEND

1. ALL DIMENSIONS ARE GIVEN IN FEET.
2. L= INDICATES ARC LENGTH ALONG A CURVE.
3. CONCRETE MONUMENTS HAVE BEEN PLACED AT ALL POINTS MARKED "O".
4. CONCRETE MONUMENTS ARE STEEL BARS ONE-HALF (1/2) INCH IN DIAMETER AND THIRTY SIX (36) INCHES IN LENGTH, ENCASED IN A CONCRETE CYLINDER FOUR (4) INCHES IN DIAMETER, AND THIRTY SIX (36) INCHES IN LENGTH.
5. LOT CORNERS HAVE BEEN MARKED WITH STEEL BARS ONE-HALF (1/2) INCH IN DIAMETER, AND EIGHTEEN (18) INCHES IN LENGTH.
6. (R) INDICATES A RADIAL LINE.
7. ∠ INDICATES A RIGHT ANGLE.
8. BEARINGS ARE IN RELATION TO THE TRUE MERIDIAN, AS DETERMINED BY POLARIS OBSERVATION, DATE 11/13/84.

CURVE DATA

CURVE	ARC	RADIUS	CENTRAL ANGLE	CHORD	CHORD BEARING
1	225.54	479.00	26°58'41"	223.46	N 53°27'45"E
3	544.59	676.00	46°09'28"	529.98	N 22°59'50"W
4	491.42	610.00	46°09'28"	478.24	N 22°59'50"W
6	297.59	415.00	41°05'09"	291.25	N 20°37'29"E

THIS PLAT IS SUBJECT TO RESTRICTIONS AS REQUIRED BY ACT 288 OF 1967 AS AMENDED ON CERTAIN LOTS WITH RESPECT TO THE REQUIREMENTS OF THE MICHIGAN DEPARTMENT OF NATURAL RESOURCES AND/OR THE MICHIGAN DEPARTMENT OF PUBLIC HEALTH, WHICH ARE RECORDED IN LIBER 1412, PAGES 106-154 OF RECORDS OF THIS COUNTY.

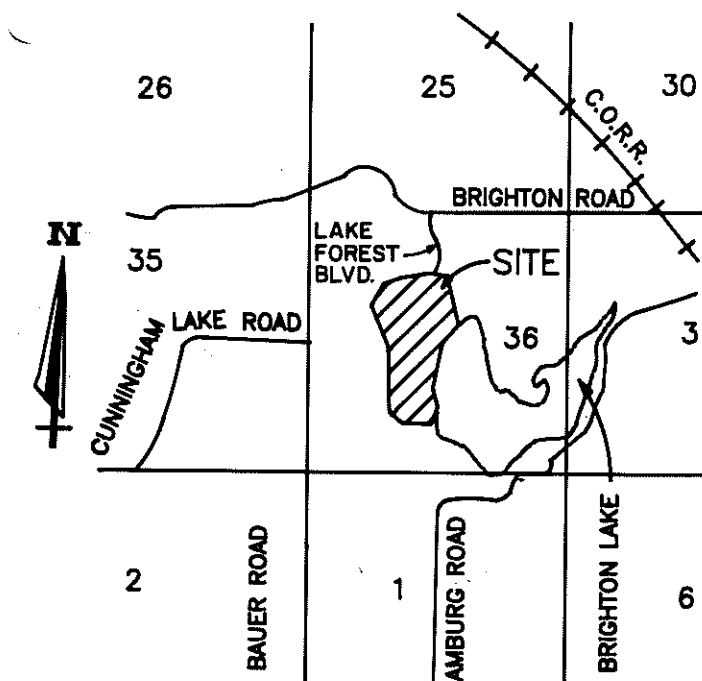
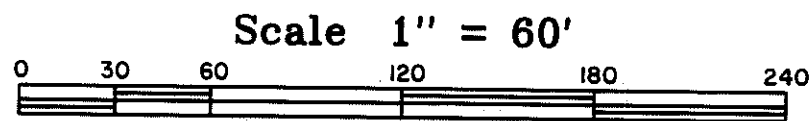


Robert D. Kohn
Giffels-Webster Engineers Inc.
ENGINEERS - SURVEYORS - PLANNERS
2871 BOND STREET, AUBURN HILLS, MICHIGAN
(313) 852-3100

Lib 28 Page 15

PINE CREEK RIDGE SUBDIVISION NO. 1

PART OF THE NW.1/4, SW.1/4 & THE NORTHEAST 1/4 OF SECTION 36,
T. 2 N., R. 5 E., GENOA TOWNSHIP, LIVINGSTON COUNTY, MICHIGAN



LOCATION MAP
NO SCALE

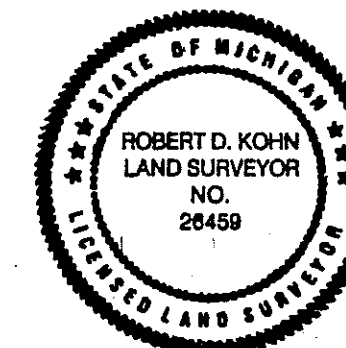
LEGEND

1. ALL DIMENSIONS ARE GIVEN IN FEET.
2. L= INDICATES ARC LENGTH ALONG A CURVE.
3. CONCRETE MONUMENTS HAVE BEEN PLACED AT ALL POINTS MARKED "C".
4. CONCRETE MONUMENTS ARE STEEL BARS ONE-HALF (1/2) INCH IN DIAMETER AND THIRTY-SIX (36) INCHES IN LENGTH, ENCASED IN A CONCRETE CYLINDER FOUR (4) INCHES IN DIAMETER, AND THIRTY-SIX (36) INCHES IN LENGTH.
5. LOT CORNERS HAVE BEEN MARKED WITH STEEL BARS ONE-HALF (1/2) INCH IN DIAMETER, AND EIGHTEEN (18) INCHES IN LENGTH.
6. (R) INDICATES A RADIAL LINE.
7. L INDICATES A RIGHT ANGLE.
8. BEARINGS ARE IN RELATION TO THE TRUE MERIDIAN, AS DETERMINED BY POLARIS OBSERVATION, DATE 11/13/84.

THIS PLAT IS SUBJECT TO RESTRICTIONS AS REQUIRED BY ACT 288 OF 1967 AS AMENDED ON CERTAIN LOTS WITH RESPECT TO THE REQUIREMENTS OF THE MICHIGAN DEPARTMENT OF NATURAL RESOURCES AND/OR THE MICHIGAN DEPARTMENT OF PUBLIC HEALTH, WHICH ARE RECORDED IN LIBER 2412, PAGES 706-754 OF RECORDS OF THIS COUNTY.

CURVE DATA

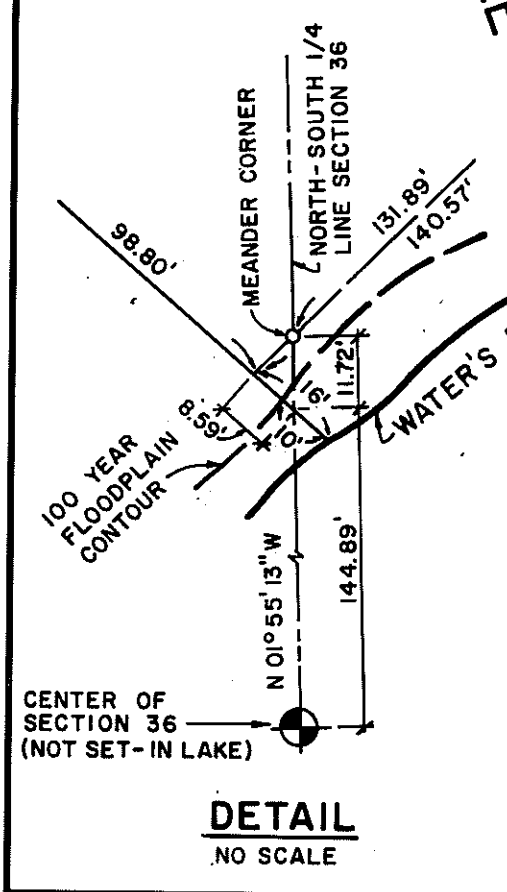
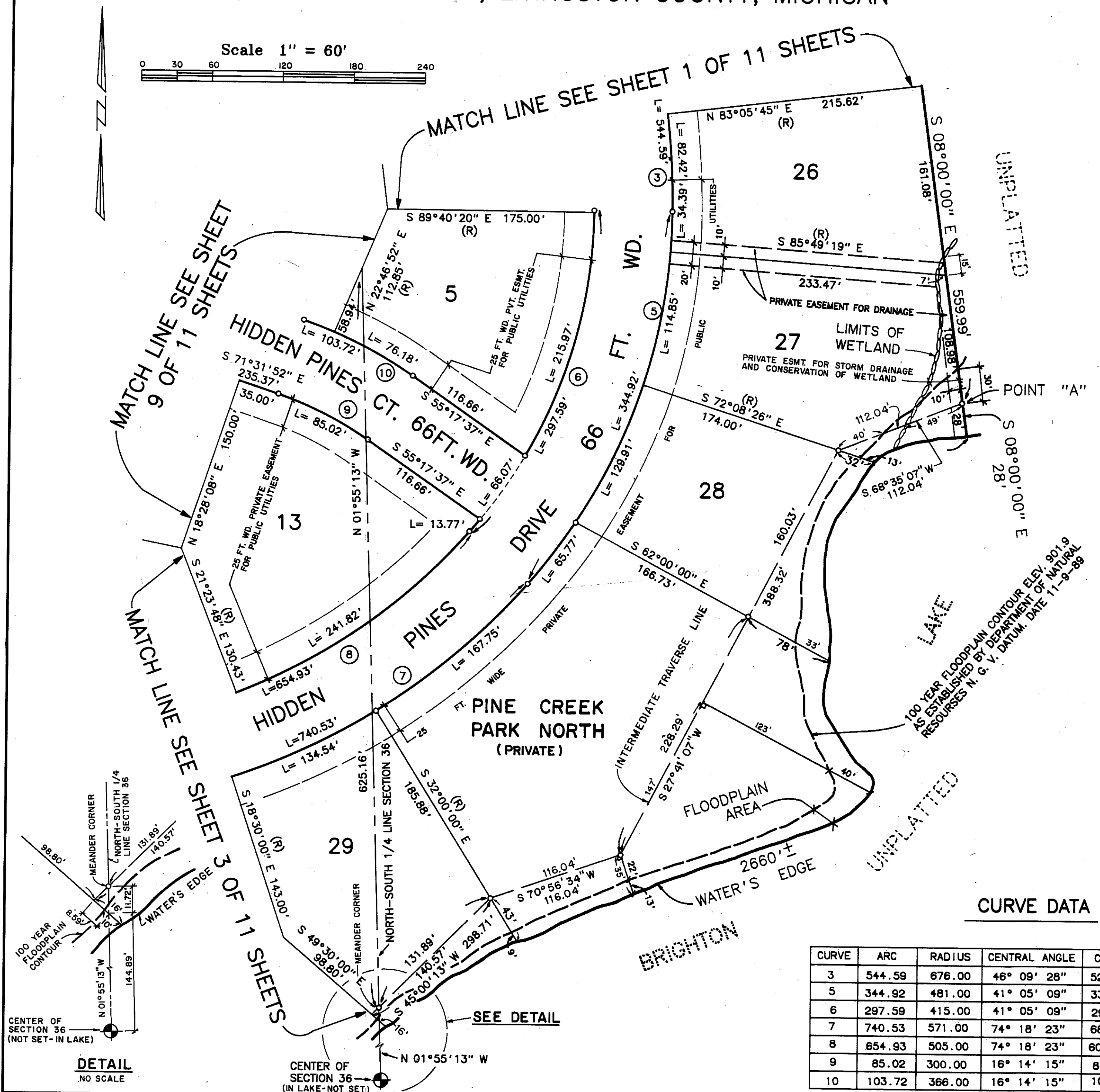
CURVE	ARC	RADIUS	CENTRAL ANGLE	CHORD	CHORD BEARING
3	544.59	676.00	46° 09' 28"	529.98	N 22° 59' 50" W
5	344.92	481.00	41° 05' 09"	337.57	N 20° 37' 29" E
6	297.59	415.00	41° 05' 09"	291.25	N 20° 37' 29" E
7	740.53	571.00	74° 18' 23"	689.71	N 78° 19' 15" E
8	654.93	505.00	74° 18' 23"	609.99	N 78° 19' 15" E
9	85.02	300.00	16° 14' 15"	84.74	N 63° 24' 45" W
10	103.72	366.00	16° 14' 15"	103.38	N 63° 24' 45" W



Robert D. Kohn

Giffels-Webster Engineers Inc.

ENGINEERS - SURVEYORS - PLANNERS
2871 BOND STREET, AUBURN HILLS, MICHIGAN
(313) 852-3100



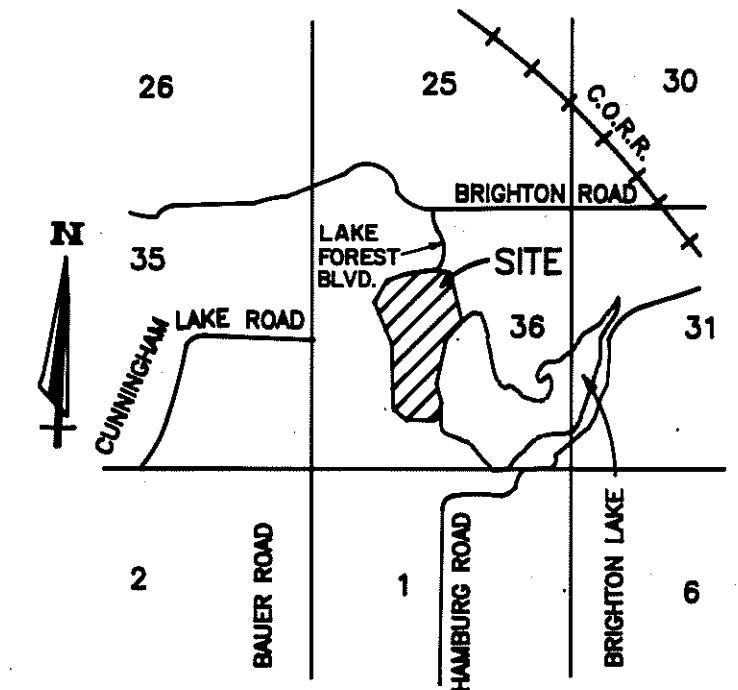
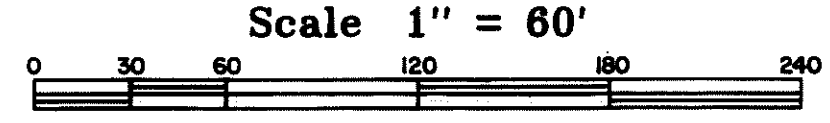
DETAIL
NO SCALE

PINE CREEK RIDGE SUBDIVISION NO. 1

PART OF THE NW. 1/4, SW. 1/4 & THE NORTHEAST 1/4 OF SECTION 36,
T. 2 N., R. 5 E., GENOA TOWNSHIP, LIVINGSTON COUNTY, MICHIGAN

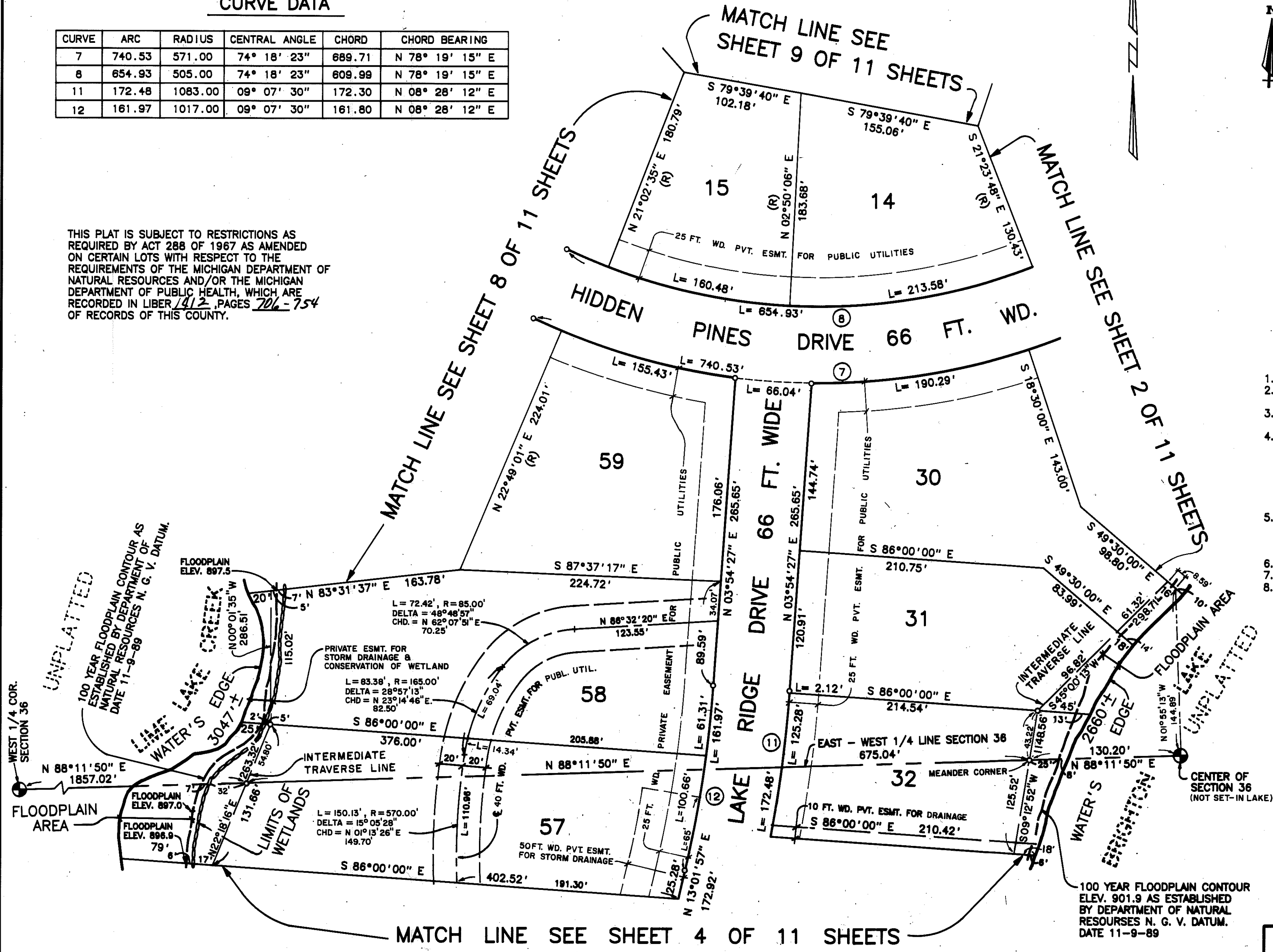
CURVE DATA

CURVE	ARC	RADIUS	CENTRAL ANGLE	CHORD	CHORD BEARING
7	740.53	571.00	74° 18' 23"	689.71	N 78° 19' 15" E
8	654.93	505.00	74° 18' 23"	609.99	N 78° 19' 15" E
11	172.48	1083.00	09° 07' 30"	172.30	N 08° 28' 12" E
12	161.97	1017.00	09° 07' 30"	161.80	N 08° 28' 12" E



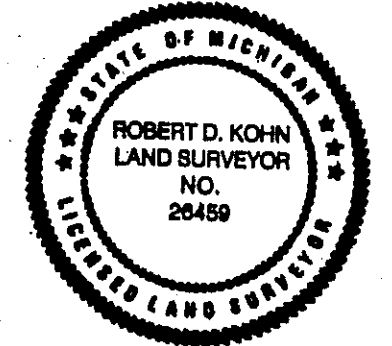
LOCATION MAP
NO SCALE

THIS PLAT IS SUBJECT TO RESTRICTIONS AS REQUIRED BY ACT 288 OF 1967 AS AMENDED ON CERTAIN LOTS WITH RESPECT TO THE REQUIREMENTS OF THE MICHIGAN DEPARTMENT OF NATURAL RESOURCES AND/OR THE MICHIGAN DEPARTMENT OF PUBLIC HEALTH, WHICH ARE RECORDED IN LIBER 412, PAGES 706-754 OF RECORDS OF THIS COUNTY.



LEGEND

1. ALL DIMENSIONS ARE GIVEN IN FEET.
2. L= INDICATES ARC LENGTH ALONG A CURVE.
3. CONCRETE MONUMENTS HAVE BEEN PLACED AT ALL POINTS MARKED "C".
4. CONCRETE MONUMENTS ARE STEEL BARS ONE-HALF (1/2) INCH IN DIAMETER AND THIRTY SIX (36) INCHES IN LENGTH, ENCASED IN A CONCRETE CYLINDER FOUR (4) INCHES IN DIAMETER, AND THIRTY SIX (36) INCHES IN LENGTH.
5. LOT CORNERS HAVE BEEN MARKED WITH STEEL BARS ONE-HALF (1/2) INCH IN DIAMETER, AND EIGHTEEN (18) INCHES IN LENGTH.
6. (R) INDICATES A RADIAL LINE.
7. Ⓡ INDICATES A RIGHT ANGLE.
8. BEARINGS ARE IN RELATION TO THE TRUE MERIDIAN, AS DETERMINED BY POLARIS OBSERVATION, DATE 11/13/84.



Robert D. Kohn

Giffels-Webster Engineers Inc.

ENGINEERS - SURVEYORS - PLANNERS
2871 BOND STREET, AUBURN HILLS, MICHIGAN
(313) 852-3100

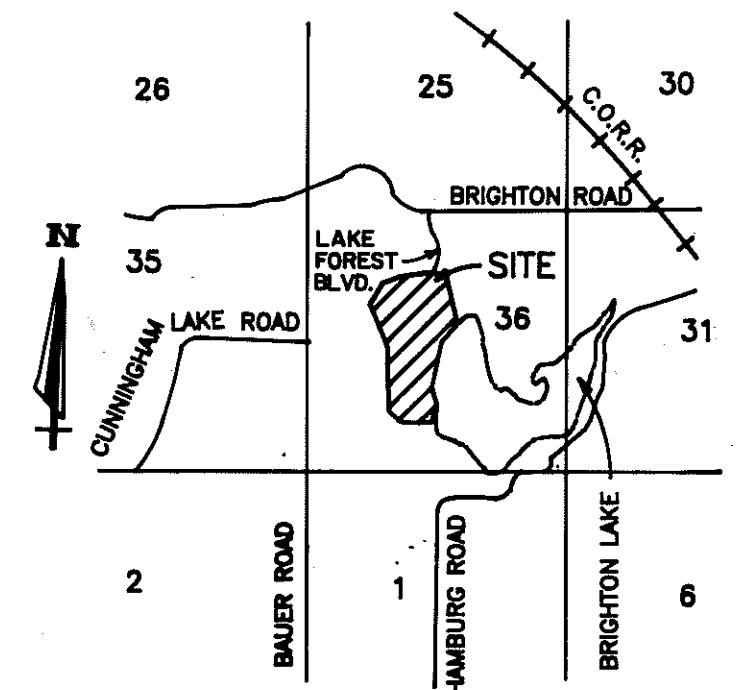
Lib 28 17

PINE CREEK RIDGE SUBDIVISION NO. 1

PART OF THE NW. 1/4, SW. 1/4 & THE NORTHEAST 1/4 OF SECTION 36,
T. 2 N., R. 5 E., GENOA TOWNSHIP, LIVINGSTON COUNTY, MICHIGAN

Scale 1" = 60'

MATCH LINE SEE SHEET 3 OF 11 SHEETS

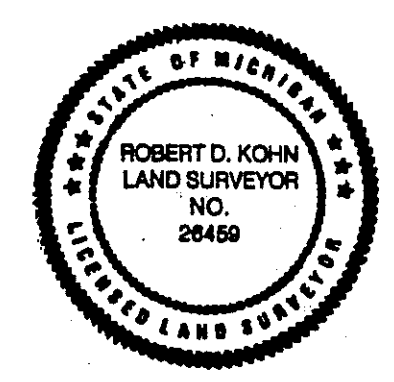


LOCATION MAP
NO SCALE

LEGEND

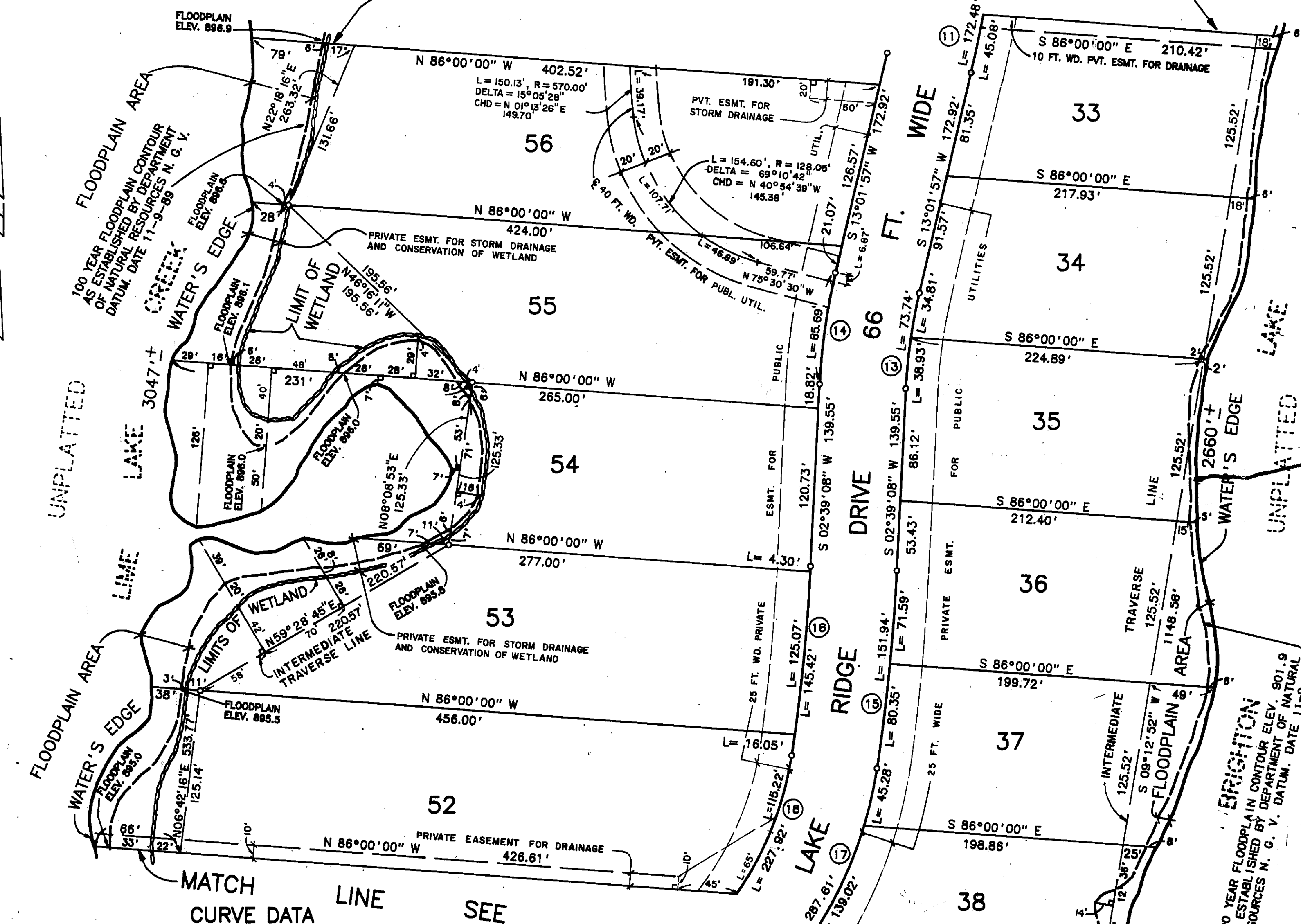
1. ALL DIMENSIONS ARE GIVEN IN FEET.
2. L INDICATES ARC LENGTH ALONG A CURVE.
3. CONCRETE MONUMENTS HAVE BEEN PLACED AT ALL POINTS MARKED "O".
4. CONCRETE MONUMENTS ARE STEEL BARS ONE-HALF (1/2) INCH IN DIAMETER AND THIRTY-SIX (36) INCHES IN LENGTH, ENCASED IN A CONCRETE CYLINDER FOUR (4) INCHES IN DIAMETER, AND THIRTY-SIX (36) INCHES IN LENGTH.
5. LOT CORNERS HAVE BEEN MARKED WITH STEEL BARS ONE-HALF (1/2) INCH IN DIAMETER, AND EIGHTEEN (18) INCHES IN LENGTH.
6. (R) INDICATES A RADIAL LINE.
7. ∠ INDICATES A RIGHT ANGLE.
8. BEARINGS ARE IN RELATION TO THE TRUE MERIDIAN, AS DETERMINED BY POLARIS OBSERVATION, DATE 11/13/84.

THIS PLAT IS SUBJECT TO RESTRICTIONS AS REQUIRED BY ACT 288 OF 1967 AS AMENDED ON CERTAIN LOTS WITH RESPECT TO THE REQUIREMENTS OF THE MICHIGAN DEPARTMENT OF NATURAL RESOURCES AND/OR THE MICHIGAN DEPARTMENT OF PUBLIC HEALTH, WHICH ARE RECORDED IN LIBER 7512, PAGES 226-254 OF RECORDS OF THIS COUNTY.



Robert D. Kohn

Giffels-Webster Engineers Inc.
ENGINEERS - SURVEYORS - PLANNERS
2871 BOND STREET, AUBURN HILLS, MICHIGAN
(313) 852-3100



UNPLATTED

UNPLATTED

MATCH CURVE DATA LINE SEE SHEET

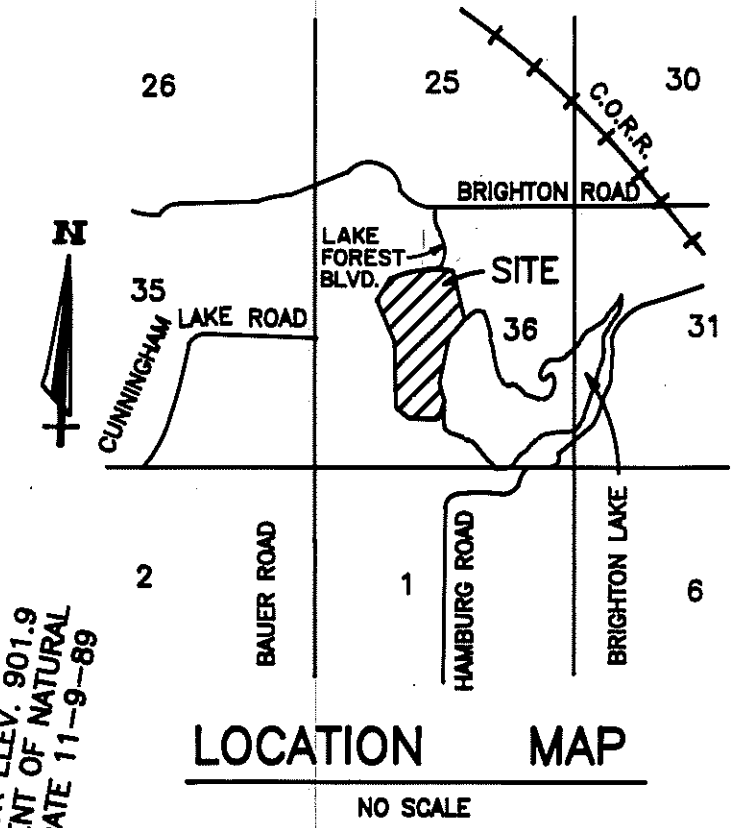
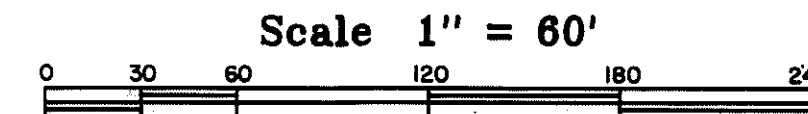
CURVE	ARC	RADIUS	CENTRAL ANGLE	CHORD	CHORD BEARING
11	172.48	1083.00	09° 07' 30"	172.30	N 08° 28' 12" E
13	73.74	407.00	10° 22' 49"	73.64	N 07° 50' 32" E
14	85.69	473.00	10° 22' 49"	85.58	N 07° 50' 32" E
15	151.94	1538.00	05° 39' 37"	151.88	N 05° 28' 56" E
16	145.42	1472.00	05° 39' 37"	145.38	N 05° 28' 56" E
17	287.81	318.00	51° 49' 12"	277.91	N 34° 13' 21" E
18	227.92	252.00	51° 49' 12"	220.23	N 34° 13' 21" E

SHEET 5 OF 11 SHEETS

100 YEAR FLOODPLAIN CONTOUR ELEV. 901.9 AS ESTABLISHED BY DEPARTMENT OF NATURAL RESOURCES N. G. V. DATUM, DATE 11-9-89

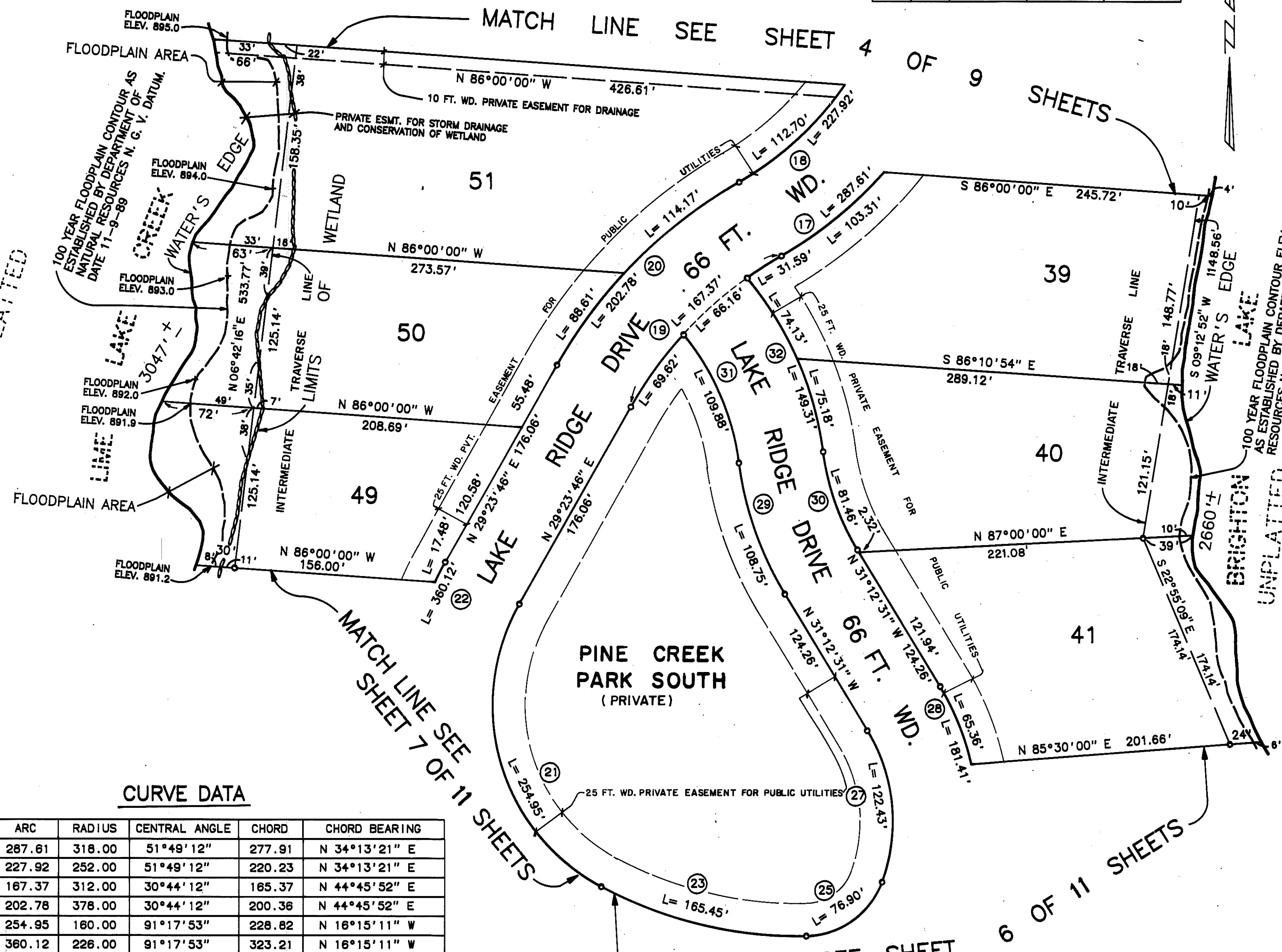
PINE CREEK RIDGE SUBDIVISION NO. 1

PART OF THE NW. 1/4, SW. 1/4 & THE NORTHEAST 1/4 OF SECTION 36,
T. 2 N., R. 5 E., GENOA TOWNSHIP, LIVINGSTON COUNTY, MICHIGAN



UNPLATTED

UNPLATTED



100 YEAR FLOODPLAIN CONTOUR ELEV. 901.9 AS ESTABLISHED BY DEPARTMENT OF NATURAL RESOURCES N. G. V. DATUM, DATE 11-9-89

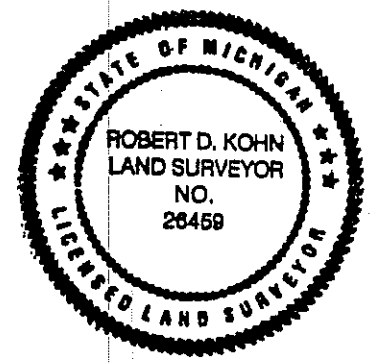
LEGEND

1. ALL DIMENSIONS ARE GIVEN IN FEET.
2. L= INDICATES ARC LENGTH ALONG A CURVE.
3. CONCRETE MONUMENTS HAVE BEEN PLACED AT ALL POINTS MARKED "o".
4. CONCRETE MONUMENTS ARE STEEL BARS ONE-HALF (1/2) INCH IN DIAMETER AND THIRTY SIX (36) INCHES IN LENGTH, ENCASED IN A CONCRETE CYLINDER FOUR (4) INCHES IN DIAMETER, AND THIRTY SIX (36) INCHES IN LENGTH.
5. LOT CORNERS HAVE BEEN MARKED WITH STEEL BARS ONE-HALF (1/2) INCH IN DIAMETER, AND EIGHTEEN (18) INCHES IN LENGTH.
6. (R) INDICATES A RADIAL LINE.
7. E. INDICATES A RIGHT ANGLE.
8. BEARINGS ARE IN RELATION TO THE TRUE MERIDIAN, AS DETERMINED BY POLARIS OBSERVATION, DATE 11/13/84

CURVE DATA

CURVE	ARC	RADIUS	CENTRAL ANGLE	CHORD	CHORD BEARING
17	287.61	318.00	51°49'12"	277.91	N 34°13'21" E
18	227.92	252.00	51°49'12"	220.23	N 34°13'21" E
19	167.37	312.00	30°44'12"	165.37	N 44°45'52" E
20	202.78	378.00	30°44'12"	200.36	N 44°45'52" E
21	254.95	160.00	91°17'53"	228.82	N 16°15'11" W
22	360.12	226.00	91°17'53"	323.21	N 16°15'11" W
23	165.45	324.00	29°15'28"	163.66	N 76°31'51" W
25	76.90	64.00	68°50'45"	72.36	N 54°25'02" E
27	122.43	137.00	51°12'10"	118.40	N 05°36'26" W
28	181.41	203.00	51°12'10"	175.44	N 05°36'26" W
29	108.75	263.00	23°41'27"	107.97	N 19°21'47" W
30	81.46	197.00	23°41'27"	80.88	N 19°21'47" W
31	109.88	197.00	31°57'27"	108.48	N 23°29'48" W
32	149.31	263.00	32°31'37"	147.31	N 23°46'53" W

THIS PLAT IS SUBJECT TO RESTRICTIONS AS REQUIRED BY ACT 288 OF 1967 AS AMENDED ON CERTAIN LOTS WITH RESPECT TO THE REQUIREMENTS OF THE MICHIGAN DEPARTMENT OF NATURAL RESOURCES AND/OR THE MICHIGAN DEPARTMENT OF PUBLIC HEALTH, WHICH ARE RECORDED IN LIBER 1912, PAGES 206-254 OF RECORDS OF THIS COUNTY.



Robert D. Kohn

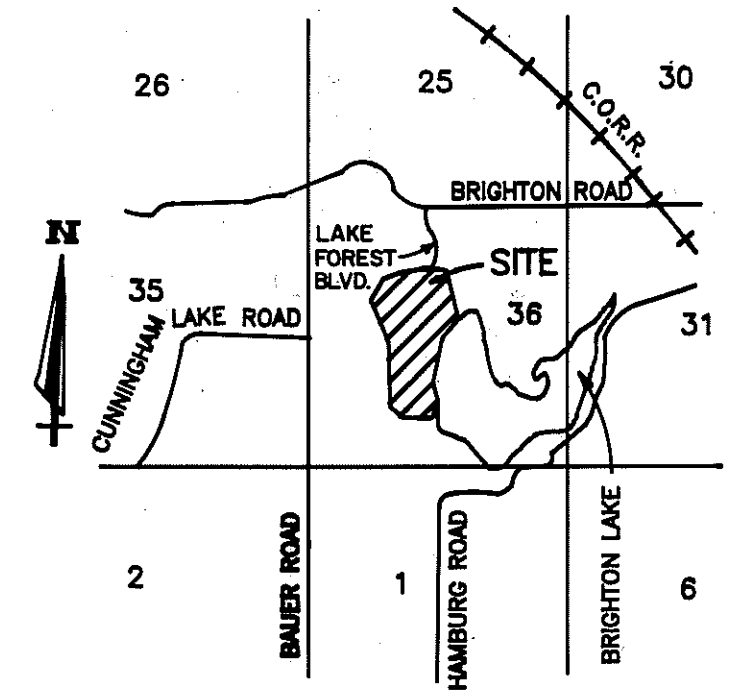
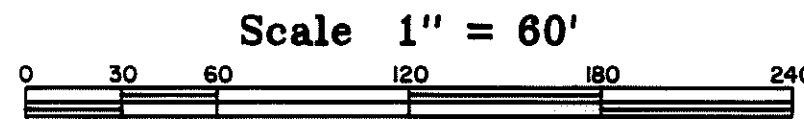
Giffels-Webster Engineers Inc.
ENGINEERS - SURVEYORS - PLANNERS
2871 BOND STREET, AUBURN HILLS, MICHIGAN
(313) 852-3100

PINE CREEK RIDGE SUBDIVISION NO. 1

PART OF THE NW. 1/4, SW. 1/4 & THE NORTHEAST 1/4 OF SECTION 36,
T. 2 N., R. 5 E., GENOA TOWNSHIP, LIVINGSTON COUNTY, MICHIGAN

CURVE DATA

CURVE	ARC	RADIUS	CENTRAL ANGLE	CHORD	CHORD BEARING
23	165.45	324.00	29°15'28"	163.66	N 76°31'51" W
24	199.15	390.00	29°15'28"	197.00	N 76°31'51" W
25	76.90	64.00	68°50'45"	72.36	N 54°25'02" E
26	156.21	130.00	68°50'45"	146.98	N 54°25'02" E
27	122.43	137.00	51°12'10"	118.40	N 05°36'26" W
28	181.41	203.00	51°12'10"	175.44	N 05°36'26" W

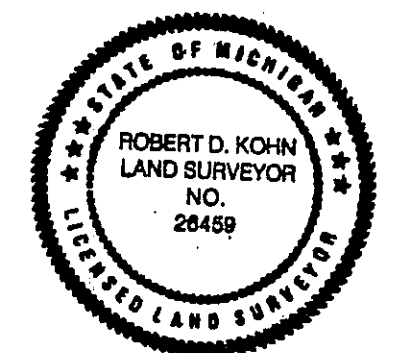
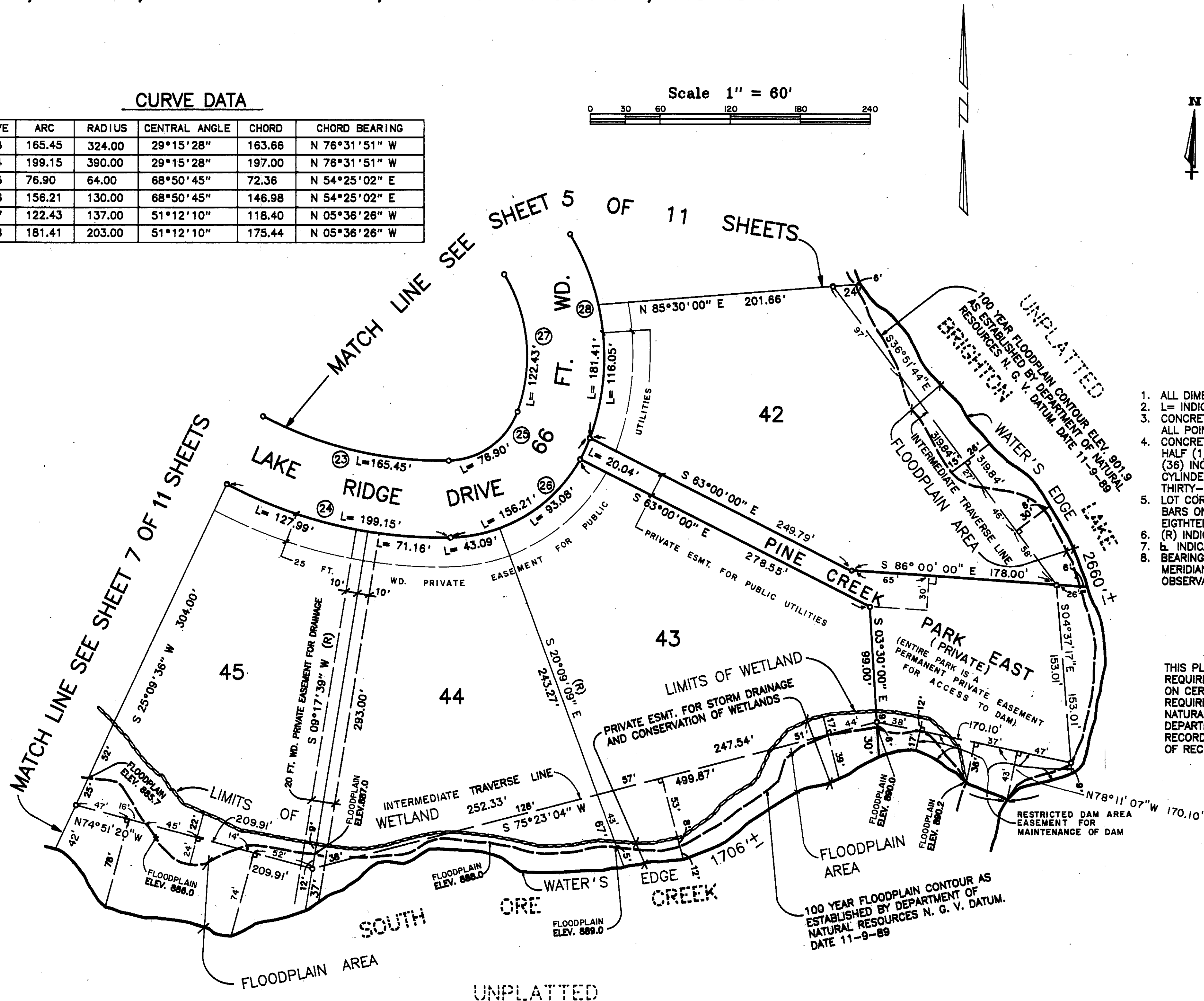


LOCATION MAP
NO SCALE

LEGEND

1. ALL DIMENSIONS ARE GIVEN IN FEET.
2. L= INDICATES ARC LENGTH ALONG A CURVE.
3. CONCRETE MONUMENTS HAVE BEEN PLACED AT ALL POINTS MARKED "o".
4. CONCRETE MONUMENTS ARE STEEL BARS ONE-HALF (1/2) INCH IN DIAMETER AND THIRTY-SIX (36) INCHES IN LENGTH, ENCASED IN A CONCRETE CYLINDER FOUR (4) INCHES IN DIAMETER, AND THIRTY-SIX (36) INCHES IN LENGTH.
5. LOT CORNERS HAVE BEEN MARKED WITH STEEL BARS ONE-HALF (1/2) INCH IN DIAMETER, AND EIGHTEEN (18) INCHES IN LENGTH.
6. (R) INDICATES A RADIAL LINE.
7. ⊥ INDICATES A RIGHT ANGLE.
8. BEARINGS ARE IN RELATION TO THE TRUE MERIDIAN, AS DETERMINED BY POLARIS OBSERVATION, DATE 11/13/84

THIS PLAT IS SUBJECT TO RESTRICTIONS AS REQUIRED BY ACT 288 OF 1967 AS AMENDED ON CERTAIN LOTS WITH RESPECT TO THE REQUIREMENTS OF THE MICHIGAN DEPARTMENT OF NATURAL RESOURCES AND/OR THE MICHIGAN DEPARTMENT OF PUBLIC HEALTH, WHICH ARE RECORDED IN LIBER 1412, PAGES 226-254 OF RECORDS OF THIS COUNTY.

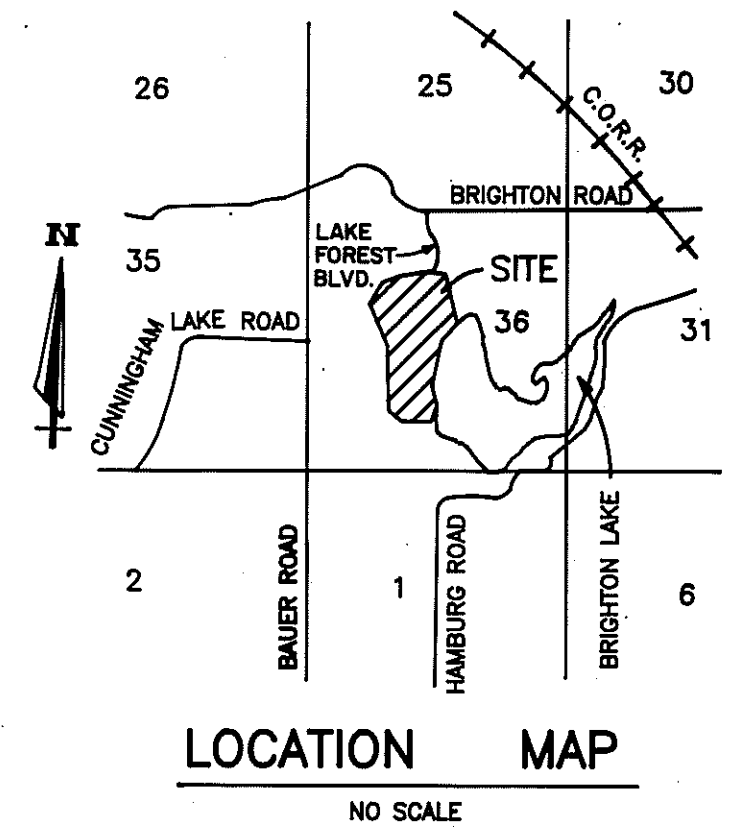
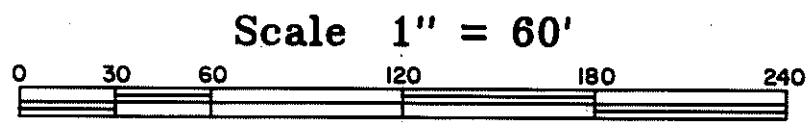


Robert D. Kohn

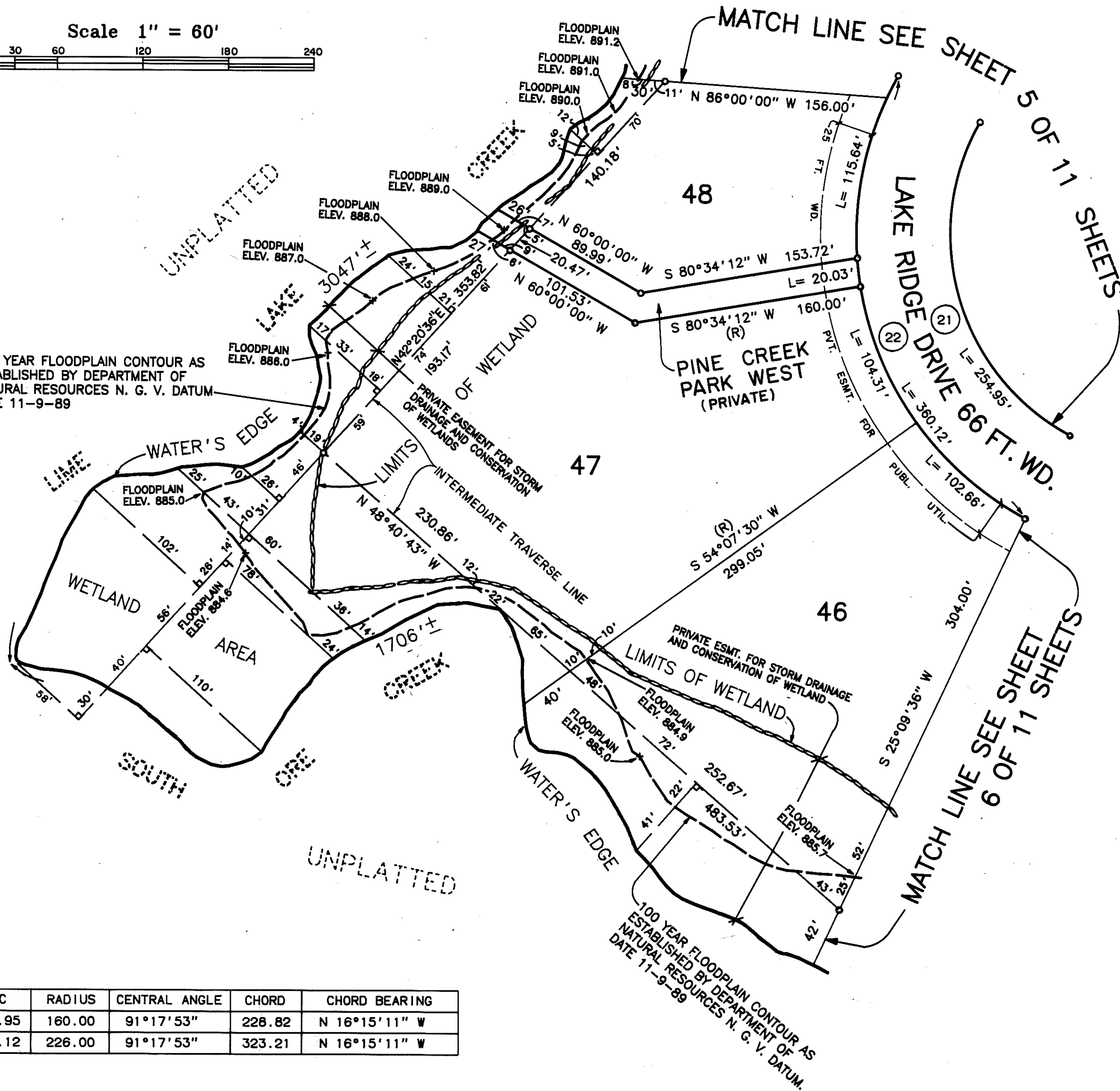
Giffels-Webster Engineers Inc.
ENGINEERS - SURVEYORS - PLANNERS
2871 BOND STREET, AUBURN HILLS, MICHIGAN
(313) 852-3100

PINE CREEK RIDGE SUBDIVISION NO. 1

PART OF THE NW.1/4, SW.1/4 & THE NORTHEAST 1/4 OF SECTION 36,
T. 2 N., R. 5 E., GENOA TOWNSHIP, LIVINGSTON COUNTY, MICHIGAN



100 YEAR FLOODPLAIN CONTOUR AS ESTABLISHED BY DEPARTMENT OF NATURAL RESOURCES N. G. V. DATUM DATE 11-9-89

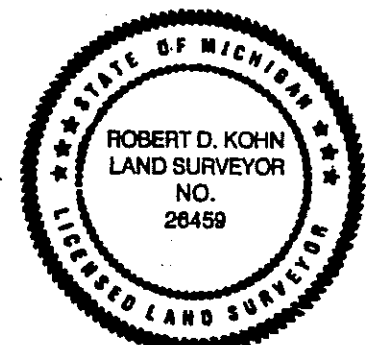


LEGEND

1. ALL DIMENSIONS ARE GIVEN IN FEET.
2. L= INDICATES ARC LENGTH ALONG A CURVE.
3. CONCRETE MONUMENTS HAVE BEEN PLACED AT ALL POINTS MARKED "O".
4. CONCRETE MONUMENTS ARE STEEL BARS ONE-HALF (1/2) INCH IN DIAMETER AND THIRTY-SIX (36) INCHES IN LENGTH, ENCASED IN A CONCRETE CYLINDER FOUR (4) INCHES IN DIAMETER, AND THIRTY-SIX (36) INCHES IN LENGTH.
5. LOT CORNERS HAVE BEEN MARKED WITH STEEL BARS ONE-HALF (1/2) INCH IN DIAMETER, AND EIGHTEEN (18) INCHES IN LENGTH.
6. (R) INDICATES A RADIAL LINE.
7. L INDICATES A RIGHT ANGLE.
8. BEARINGS ARE IN RELATION TO THE TRUE MERIDIAN, AS DETERMINED BY POLARIS OBSERVATION, DATE 11/13/84.

THIS PLAT IS SUBJECT TO RESTRICTIONS AS REQUIRED BY ACT 288 OF 1967 AS AMENDED ON CERTAIN LOTS WITH RESPECT TO THE REQUIREMENTS OF THE MICHIGAN DEPARTMENT OF NATURAL RESOURCES AND/OR THE MICHIGAN DEPARTMENT OF PUBLIC HEALTH, WHICH ARE RECORDED IN LIBER 412, PAGES 254 OF RECORDS OF THIS COUNTY.

CURVE	ARC	RADIUS	CENTRAL ANGLE	CHORD	CHORD BEARING
21	254.95	160.00	91°17'53"	228.82	N 16°15'11" W
22	360.12	226.00	91°17'53"	323.21	N 16°15'11" W



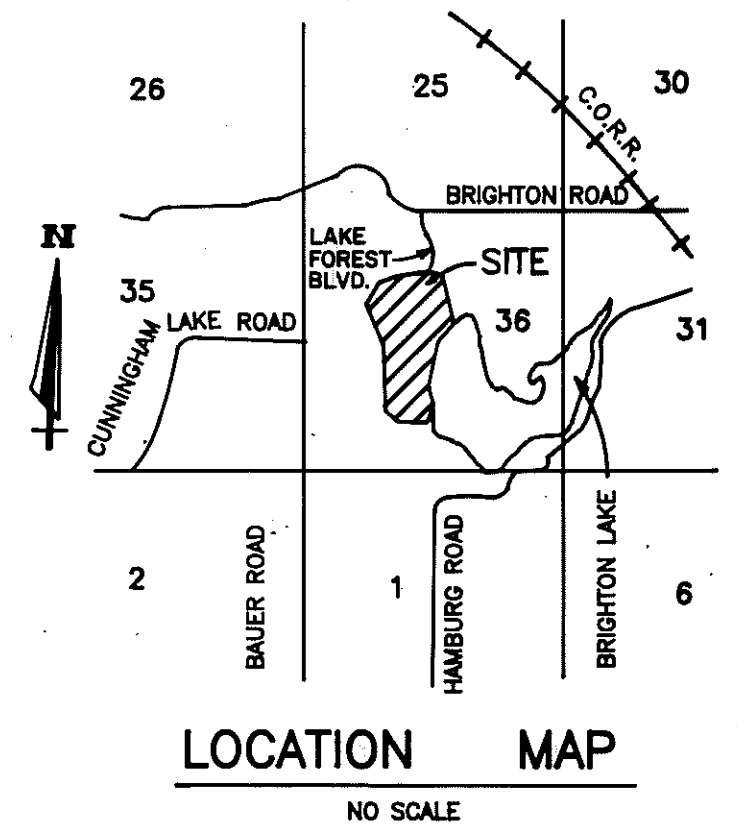
Robert D. Kohn

Giffels-Webster Engineers Inc.
ENGINEERS - SURVEYORS - PLANNERS
2871 BOND STREET, AUBURN HILLS, MICHIGAN
(313) 852-3100

PINE CREEK RIDGE SUBDIVISION NO. 1

PART OF THE NW.1/4, SW.1/4 & THE NORTHEAST 1/4 OF SECTION 36,
T. 2 N., R. 5 E., GENOA TOWNSHIP, LIVINGSTON COUNTY, MICHIGAN

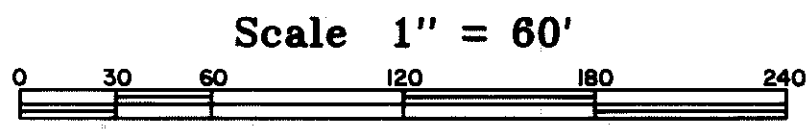
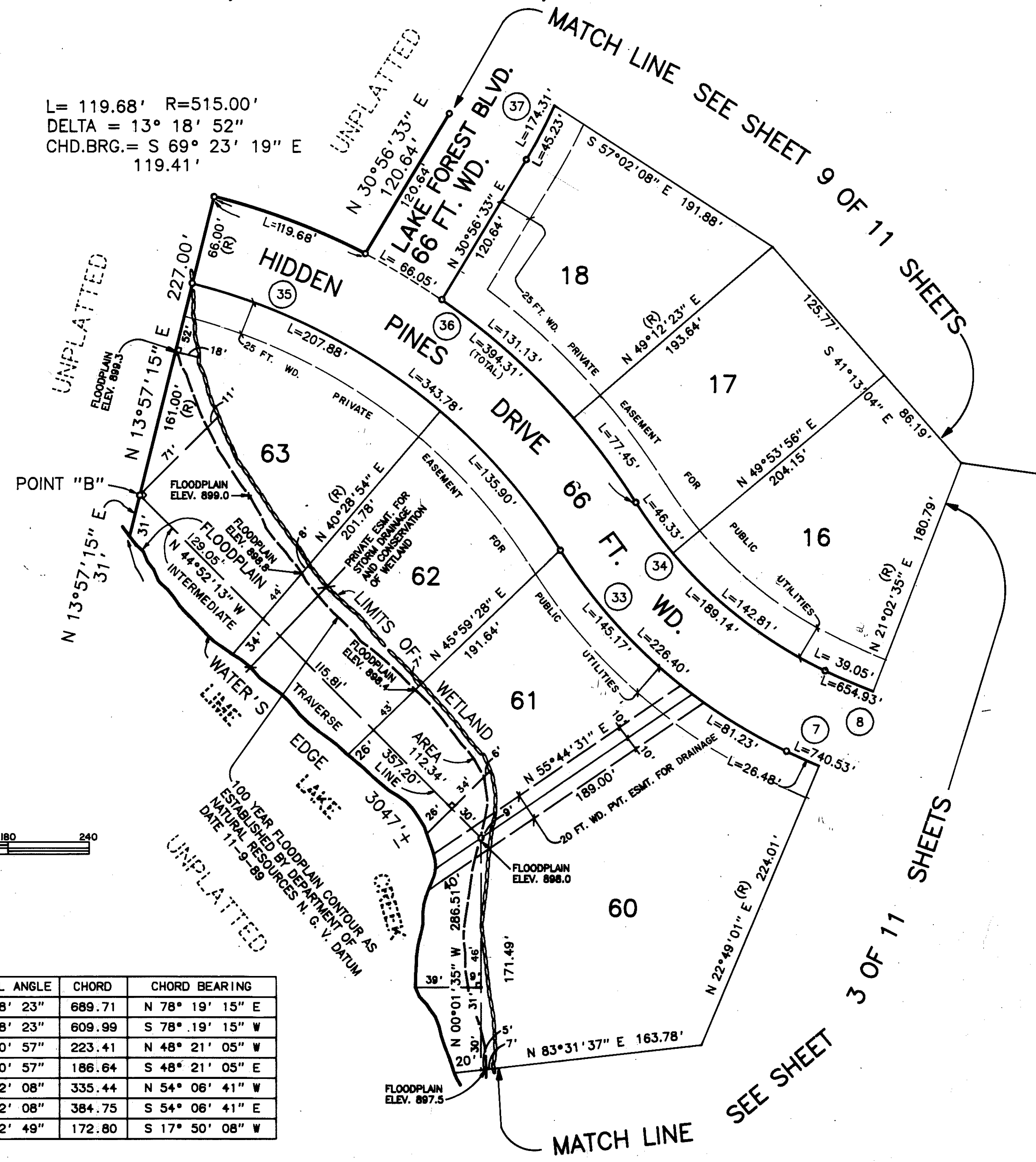
L=119.68' R=515.00'
DELTA = 13° 18' 52"
CHD.BRG.= S 69° 23' 19" E
119.41'



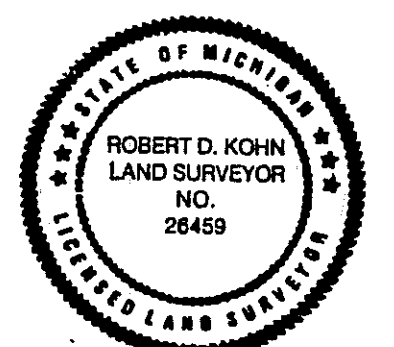
LEGEND

1. ALL DIMENSIONS ARE GIVEN IN FEET.
2. L= INDICATES ARC LENGTH ALONG A CURVE.
3. CONCRETE MONUMENTS HAVE BEEN PLACED AT ALL POINTS MARKED " ".
4. CONCRETE MONUMENTS ARE STEEL BARS ONE-HALF (1/2) INCH IN DIAMETER AND THIRTY-SIX (36) INCHES IN LENGTH, ENCASED IN A CONCRETE CYLINDER FOUR (4) INCHES IN DIAMETER, AND THIRTY-SIX (36) INCHES IN LENGTH.
5. LOT CORNERS HAVE BEEN MARKED WITH STEEL BARS ONE-HALF (1/2) INCH IN DIAMETER, AND EIGHTEEN (18) INCHES IN LENGTH.
6. (R) INDICATES A RADIAL LINE.
7. ∟ INDICATES A RIGHT ANGLE.
8. BEARINGS ARE IN RELATION TO THE TRUE MERIDIAN, AS DETERMINED BY POLARIS OBSERVATION, DATE 11/13/84.

THIS PLAT IS SUBJECT TO RESTRICTIONS AS REQUIRED BY ACT 288 OF 1967 AS AMENDED ON CERTAIN LOTS WITH RESPECT TO THE REQUIREMENTS OF THE MICHIGAN DEPARTMENT OF NATURAL RESOURCES AND/OR THE MICHIGAN DEPARTMENT OF PUBLIC HEALTH, WHICH ARE RECORDED IN LIBER 2412, PAGES 206-254 OF RECORDS OF THIS COUNTY.



CURVE	ARC	RADIUS	CENTRAL ANGLE	CHORD	CHORD BEARING
7	740.53	571.00	74° 18' 23"	689.71	N 78° 19' 15" E
8	654.93	505.00	74° 18' 23"	609.99	S 78° 19' 15" W
33	226.40	401.00	32° 20' 57"	223.41	N 48° 21' 05" W
34	189.14	335.00	32° 20' 57"	186.64	S 48° 21' 05" E
35	343.78	449.00	43° 52' 08"	335.44	N 54° 06' 41" W
36	394.31	515.00	43° 52' 08"	384.75	S 54° 06' 41" E
37	174.31	381.00	26° 12' 49"	172.80	S 17° 50' 08" W



Robert D. Kohn

Giffels-Webster Engineers Inc.
ENGINEERS - SURVEYORS - PLANNERS
2871 BOND STREET, AUBURN HILLS, MICHIGAN
(313) 852-3100

PINE CREEK RIDGE SUBDIVISION NO. 1

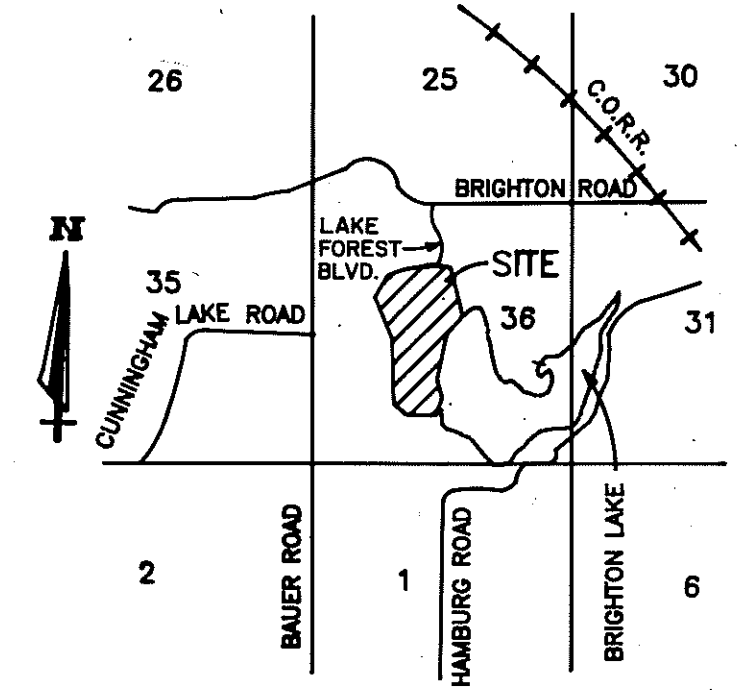
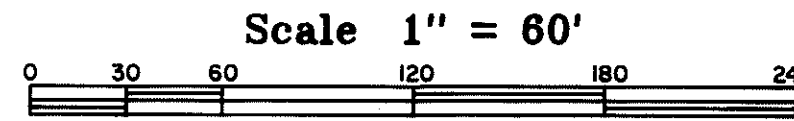
PART OF THE NW.1/4, SW.1/4 & THE NORTHEAST 1/4 OF SECTION 36,
T. 2 N., R. 5 E., GENOA TOWNSHIP, LIVINGSTON COUNTY, MICHIGAN

L=173.46' R=526.00'
DELTA = 18° 53' 41"
CHD.= N 57° 30' 15" E
172.68'

L=288.12' R=381.00'
DELTA = 43° 19' 41"
CHD.= N 26° 23' 34" E
281.30'

L= 144.12' R= 315.00'
DELTA= 26° 12' 49"
CHD.= N 17° 50' 08" E
142.86'

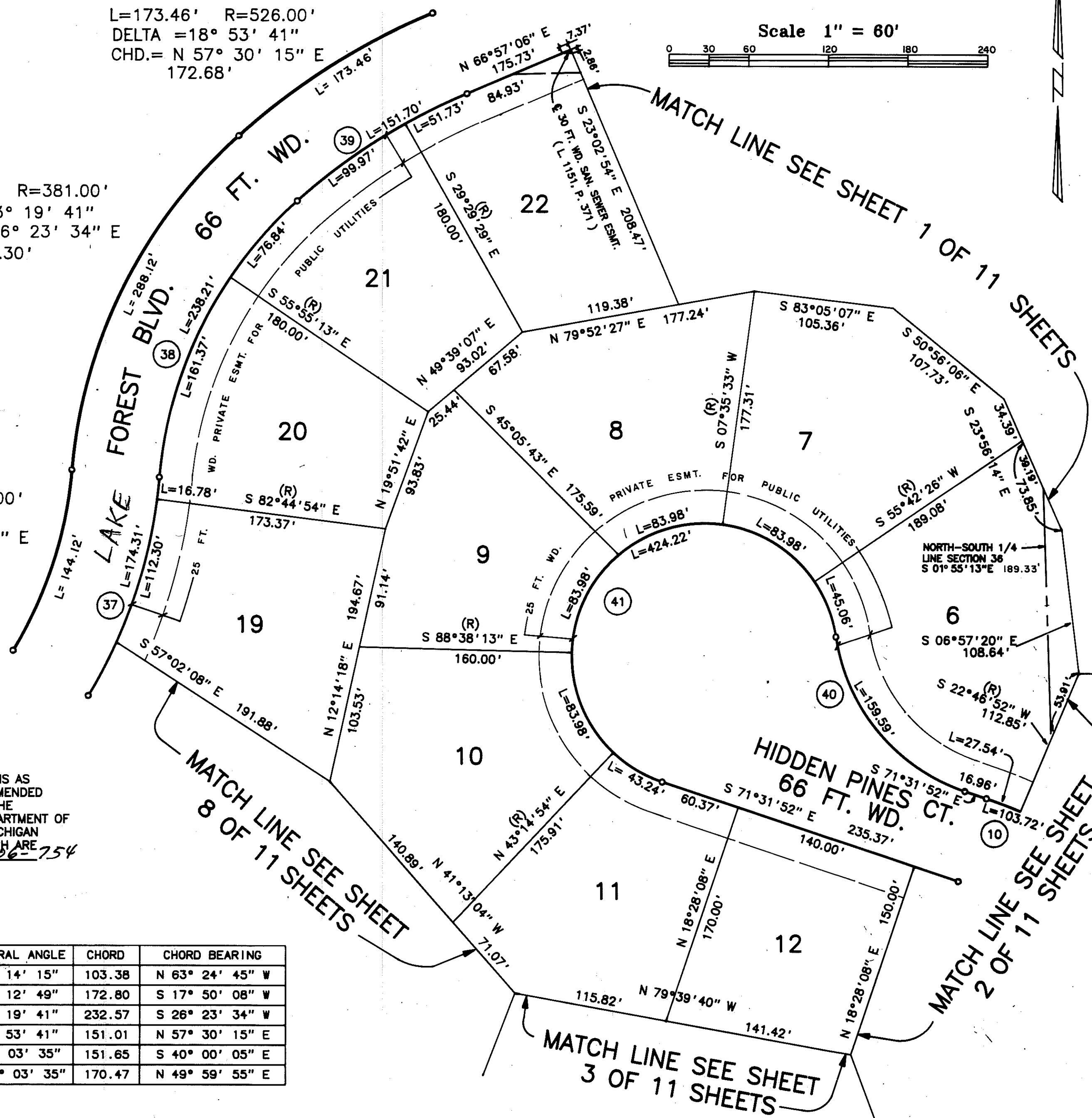
UNPLATTED



LOCATION MAP
NO SCALE

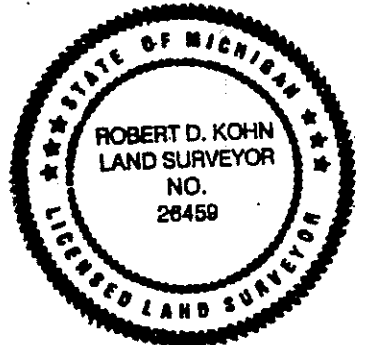
LEGEND

1. ALL DIMENSIONS ARE GIVEN IN FEET.
2. L= INDICATES ARC LENGTH ALONG A CURVE.
3. CONCRETE MONUMENTS HAVE BEEN PLACED AT ALL POINTS MARKED " ".
4. CONCRETE MONUMENTS ARE STEEL BARS ONE-HALF (1/2) INCH IN DIAMETER AND THIRTY-SIX (36) INCHES IN LENGTH, ENCASED IN A CONCRETE CYLINDER FOUR (4) INCHES IN DIAMETER, AND THIRTY-SIX (36) INCHES IN LENGTH.
5. LOT CORNERS HAVE BEEN MARKED WITH STEEL BARS ONE-HALF (1/2) INCH IN DIAMETER, AND EIGHTEEN (18) INCHES IN LENGTH.
6. (R) INDICATES A RADIAL LINE.
7. ⊥ INDICATES A RIGHT ANGLE.
8. BEARINGS ARE IN RELATION TO THE TRUE MERIDIAN, AS DETERMINED BY POLARIS OBSERVATION, DATE 11/13/84.



THIS PLAT IS SUBJECT TO RESTRICTIONS AS REQUIRED BY ACT 288 OF 1967 AS AMENDED ON CERTAIN LOTS WITH RESPECT TO THE REQUIREMENTS OF THE MICHIGAN DEPARTMENT OF NATURAL RESOURCES AND/OR THE MICHIGAN DEPARTMENT OF PUBLIC HEALTH, WHICH ARE RECORDED IN LIBER 442, PAGES 26-754 OF RECORDS OF THIS COUNTY.

CURVE	ARC	RADIUS	CENTRAL ANGLE	CHORD	CHORD BEARING
10	103.72	366.00	16° 14' 15"	103.38	N 63° 24' 45" W
37	174.31	381.00	26° 12' 49"	172.80	S 17° 50' 08" W
38	238.21	315.00	43° 19' 41"	232.57	S 26° 23' 34" W
39	151.70	460.00	18° 53' 41"	151.01	N 57° 30' 15" E
40	159.59	145.00	63° 03' 35"	151.65	S 40° 00' 05" E
41	424.22	100.00	243° 03' 35"	170.47	N 49° 59' 55" E



Robert D. Kohn

Giffels-Webster Engineers Inc.
ENGINEERS - SURVEYORS - PLANNERS
2871 BOND STREET, AUBURN HILLS, MICHIGAN
(313) 852-3100