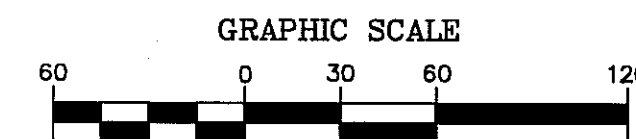


PEBBLE CREEK

A Subdivision of Part of the Northeast 1/4 of Section 13
and Part of the Southeast 1/4 of Section 12
Town 2 North, Range 5 East,
Genoa Township, Livingston County, Michigan



(IN FEET)
1 INCH = 60 FEET

CURVE TABLE

CURVE	RADIUS	LENGTH	CHORD	BEARING	DELTA
C1	433.00'	36.55'	36.54'	N48°37'02"W	04°50'12"
C2	35.00'	54.98'	49.50'	N06°02'07"W	90°00'00"
C3	35.00'	54.98'	49.50'	S83°57'53"W	90°00'00"
C4	267.00'	129.75'	128.48'	S64°57'24"E	27°50'34"
C5	333.00'	161.54'	159.96'	N64°55'57"W	27°47'39"
C6	35.00'	52.07'	47.40'	N36°12'28"W	85°14'37"
C7	35.00'	58.83'	52.15'	N51°48'59"E	96°18'46"
C8	267.00'	219.52'	213.39'	N77°34'07"E	47°06'23"
C9	333.00'	267.10'	260.00'	N78°59'39"E	45°57'26"
C14	263.00'	249.29'	240.07'	N11°48'33"W	54°18'39"
C15	197.00'	203.30'	194.40'	S09°24'00"W	59°07'45"
C16	75.00'	60.83'	59.18'	N07°53'21"E	46°28'15"
C17	75.00'	47.43'	46.64'	S38°16'47"E	36°13'50"
C18	75.00'	350.19'	108.34'	S77°21'53"W	267°31'11"
C19	333.00'	101.39'	101.00'	N02°18'32"W	17°26'45"
C20	267.00'	68.46'	68.28'	S03°41'09"E	14°41'31"
C21	533.00'	126.33'	126.03'	N04°14'31"W	13°34'47"
C22	467.00'	110.69'	110.42'	N04°14'31"W	13°34'47"

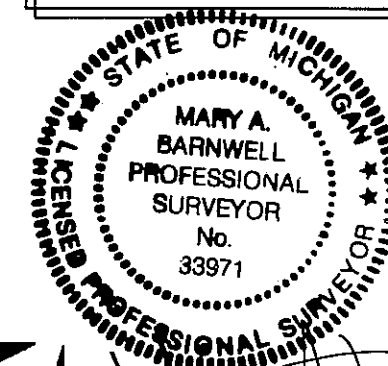
CERTIFIED TRUE COPY OF
RECORDED PLAT
BY DEPARTMENT OF CONSUMER
AND INDUSTRY SERVICES

BY *Maynard R. Dyer*
MAYNARD R. DYER, P.S., MANAGER
SUBDIVISION CONTROL AND
SURVEY & REMONUMENTATION
SECTION

DATE 4-5-00

LEGEND:

- 1) ALL DIMENSIONS SHOWN ARE IN FEET.
- 2) ALL CURVILINEAR DIMENSIONS SHOWN ARE ARC LENGTHS.
- 3) THE SYMBOL "o" INDICATES A CONCRETE MONUMENT 4 INCHES IN DIAMETER, 36 INCHES IN LENGTH, ENCASED A 1/2 INCH DIAMETER x 36 INCH LONG STEEL ROD.
- 4) THE SYMBOL "•" INDICATES A FOUND CONCRETE MONUMENT 4 INCHES IN DIAMETER, ENCASED A 1/2 INCH DIAMETER STEEL ROD.
- 5) LOT CORNERS ARE MARKED WITH 3/4 INCH DIAMETER x 18 INCH LONG STEEL PIPES WITH YELLOW PLASTIC CAPS MARKED "MAB 33971".
- 6) THE SYMBOL (R) INDICATES A RADIAL LINE.
- 7) THE SYMBOL (NR) INDICATES A NON-RADIAL LINE.
- 8) BEARINGS WERE ESTABLISHED FROM MICHIGAN DEPARTMENT OF TRANSPORTATION'S FILE No. 47-4-2, ROUTE 1-96, CONTROL SECTION 47065, SHEET No. 40 AND RECORDED IN LIBER 393, PAGE 108, LIVINGSTON COUNTY RECORDS.



MARY A. BARNWELL
PROFESSIONAL SURVEYOR
SURVEYOR NO. 33971

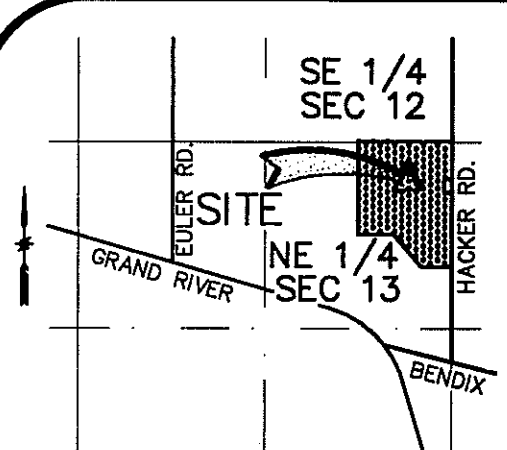


7011 GRAND RIVER AVE.
BRIGHTON, MICHIGAN 48114
(810) 227-9533

ALL DRAIN EASEMENTS ARE UNDER THE JURISDICTION
OF THE LIVINGSTON COUNTY DRAIN COMMISSIONER
AND THE PEBBLE CREEK DRAIN DRAINAGE DISTRICT.

LOCATION MAP

NO SCALE

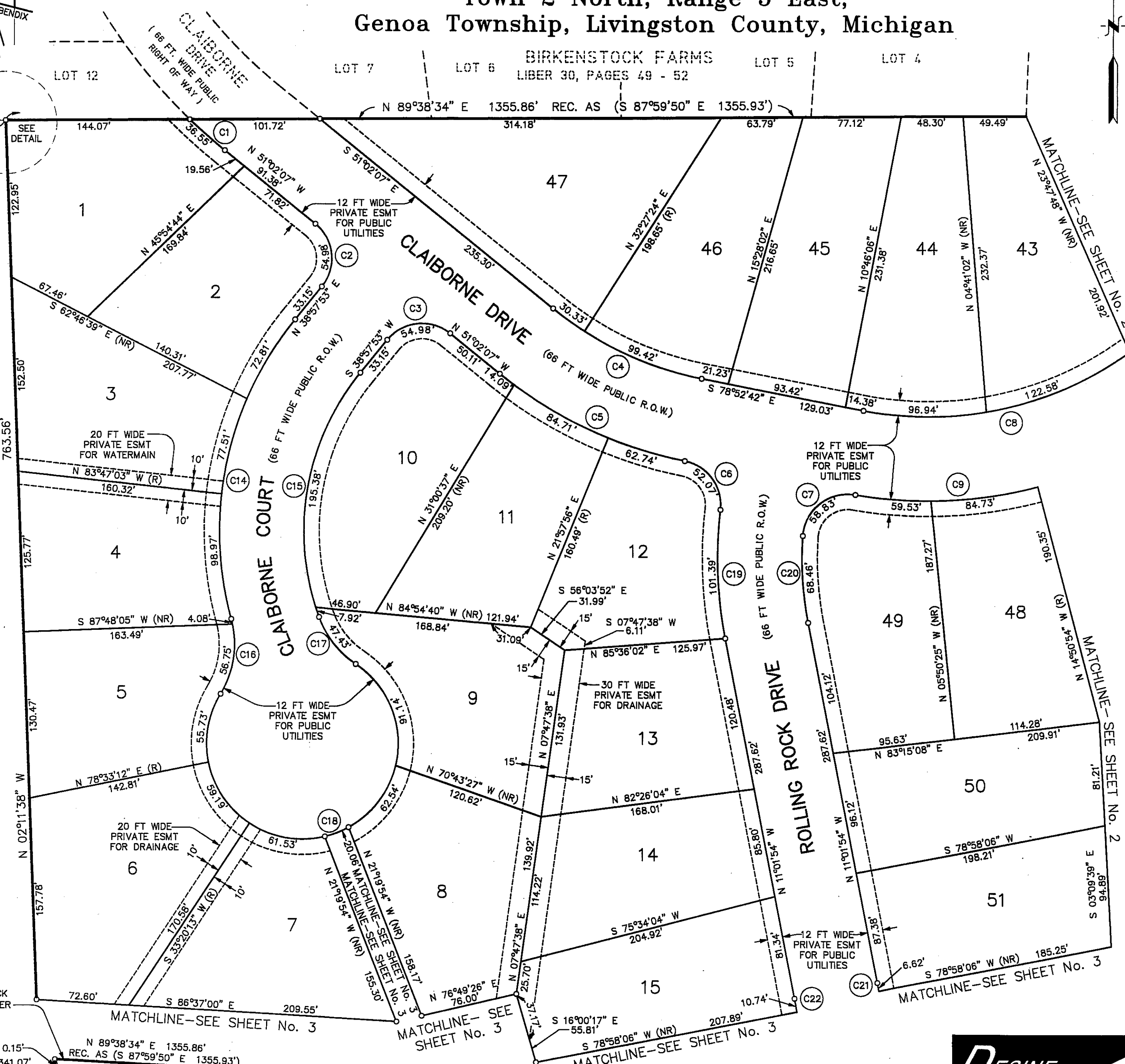


NORTH 1/4 CORNER
SECTION 13, T2N, R5E
GENOA TOWNSHIP,
LIVINGSTON COUNTY,
MICHIGAN
LCRC #1578

SOUTH LINE OF "BIRKENSTOCK
FARMS" AS RECORDED IN LIBER
30 OF PLATS, PAGES 49
THROUGH 52, LIVINGSTON
COUNTY RECORDS

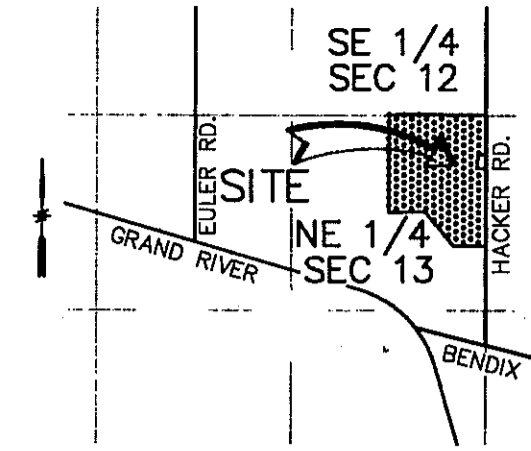
NORTH 1/4 CORNER
SECTION 13, T2N, R5E
GENOA TOWNSHIP,
LIVINGSTON COUNTY,
MICHIGAN
LCRC #1578

DETAIL
SCALE
1"=1'

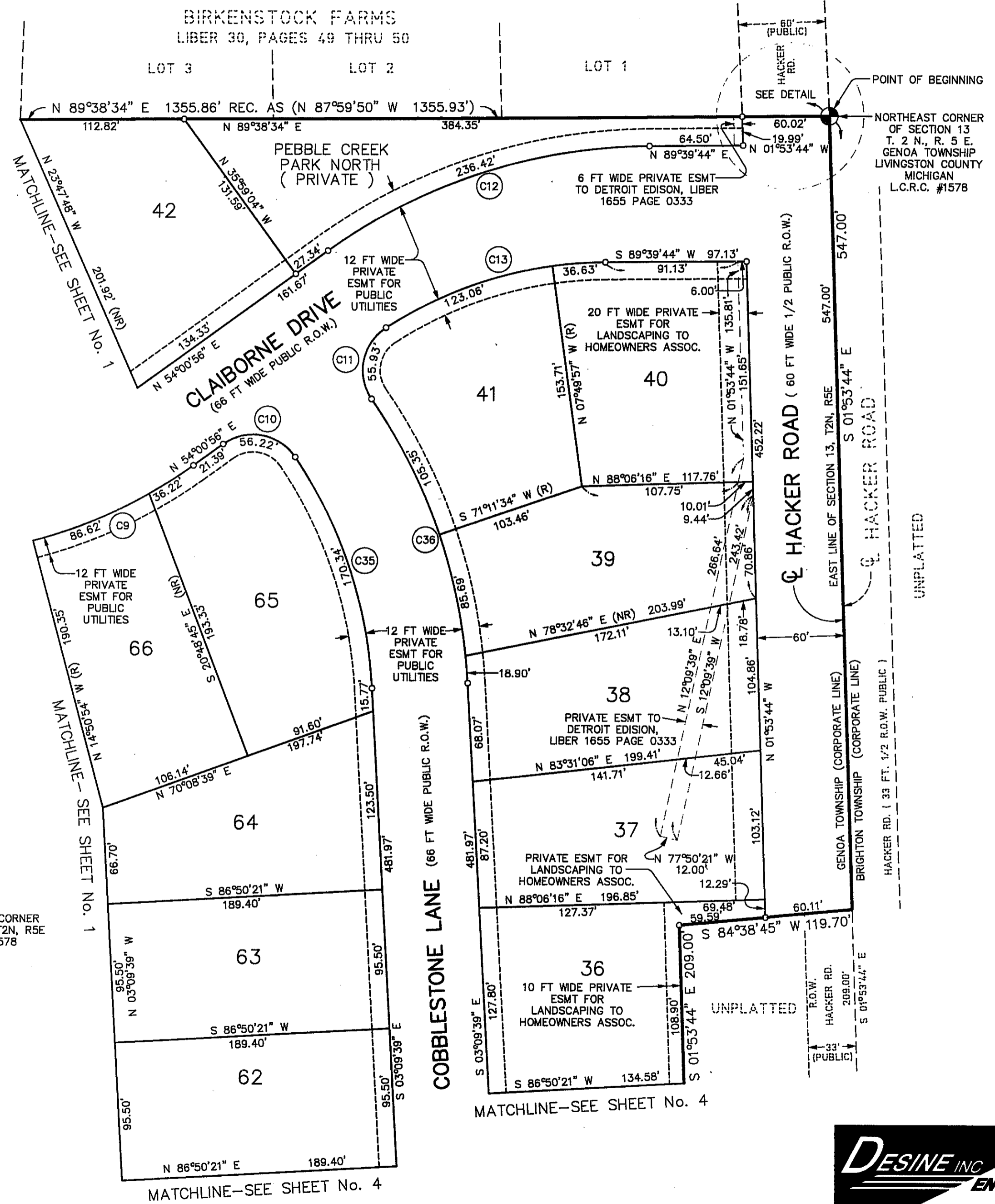
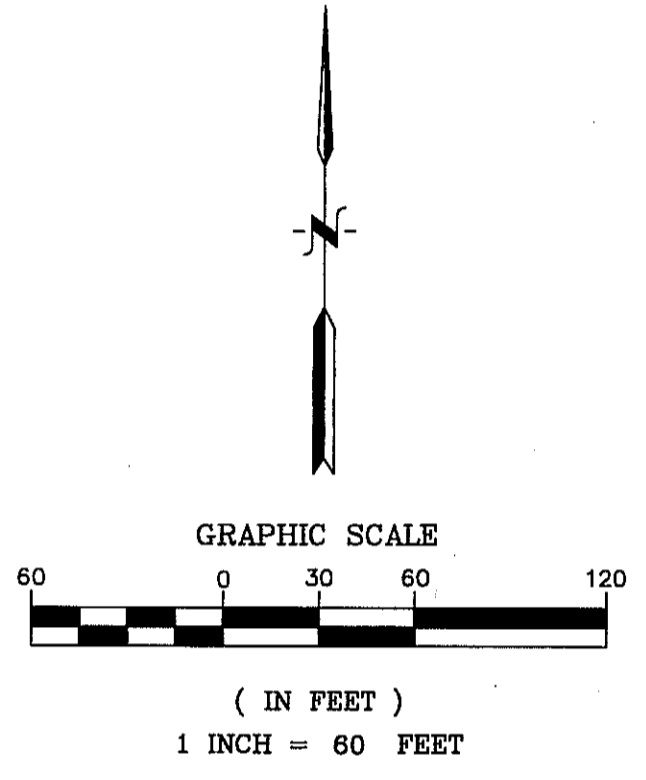


PEBBLE CREEK

A Subdivision of Part of the Northeast 1/4 of Section 13
and Part of the Southeast 1/4 of Section 12
Town 2 North, Range 5 East
Genoa Township, Livingston County, Michigan

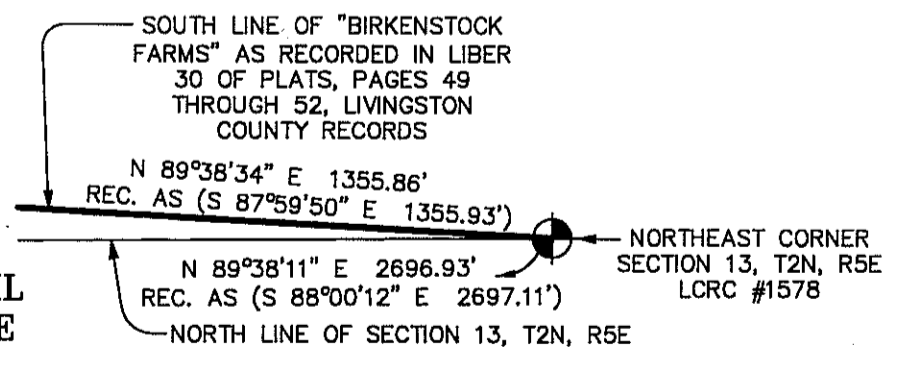


LOCATION MAP
NO SCALE



- LEGEND:**
- 1) ALL DIMENSIONS SHOWN ARE IN FEET.
 - 2) ALL CURVILINEAR DIMENSIONS SHOWN ARE ARC LENGTHS.
 - 3) THE SYMBOL "o" INDICATES A CONCRETE MONUMENT 4 INCHES IN DIAMETER, 36 INCHES IN LENGTH, ENCASING A 1/2 INCH DIAMETER x 36 INCH LONG STEEL ROD.
 - 4) THE SYMBOL "•" INDICATES A FOUND CONCRETE MONUMENT 4 INCHES IN DIAMETER, ENCASING A 1/2 INCH DIAMETER STEEL ROD.
 - 5) LOT CORNERS ARE MARKED WITH 3/4 INCH DIAMETER x 18 INCH LONG STEEL PIPES WITH YELLOW PLASTIC CAPS MARKED "MAB 33971".
 - 6) THE SYMBOL (R) INDICATES A RADIAL LINE.
 - 7) THE SYMBOL (NR) INDICATES A NON-RADIAL LINE.
 - 8) BEARINGS WERE ESTABLISHED FROM MICHIGAN DEPARTMENT OF TRANSPORTATION'S FILE No. 47-4-2, ROUTE 1-96, CONTROL SECTION 47065, SHEET No. 40 AND RECORDED IN LIBER 393, PAGE 108, LIVINGSTON COUNTY RECORDS.

ALL DRAIN EASEMENTS ARE UNDER THE JURISDICTION OF THE LIVINGSTON COUNTY DRAIN COMMISSIONER AND THE PEBBLE CREEK DRAIN DRAINAGE DISTRICT.



DETAIL SCALE
1"=1'

CURVE TABLE

CURVE	RADIUS	LENGTH	CHORD	BEARING	DELTA
C9	333.00'	267.10'	260.00'	N76°59'39"E	45°57'26"
C10	35.00'	56.22'	50.37'	S79°58'01"E	92°02'06"
C11	35.00'	55.93'	50.16'	S11°12'35"W	91°33'10"
C12	380.00'	236.42'	232.62'	N71°50'20"E	35°38'48"
C13	280.00'	159.69'	157.53'	S73°19'27"W	32°40'33"
C35	317.00'	170.34'	168.30'	S18°33'19"E	30°47'19"
C36	383.00'	209.94'	207.32'	S18°51'50"E	31°24'21"

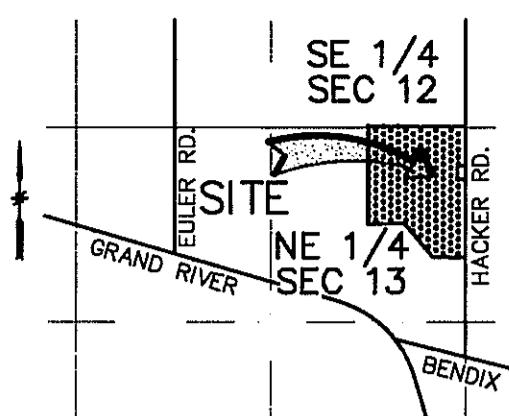


MARY A. BARNWELL
PROFESSIONAL SURVEYOR
SURVEYOR NO. 33971

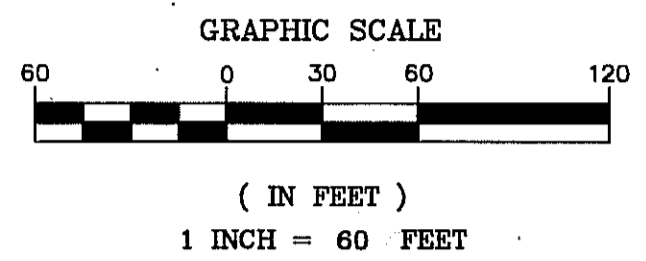
DESIGN INC ENGINEERS
7011 GRAND RIVER AVE.
BRIGHTON, MICHIGAN 48114
(810) 227-9533

PEBBLE CREEK

A Subdivision of Part of the Northeast 1/4 of Section 13
and Part of the Southeast 1/4 of Section 12
Town 2 North, Range 5 East,
Genoa Township, Livingston County, Michigan



LOCATION MAP
NO SCALE

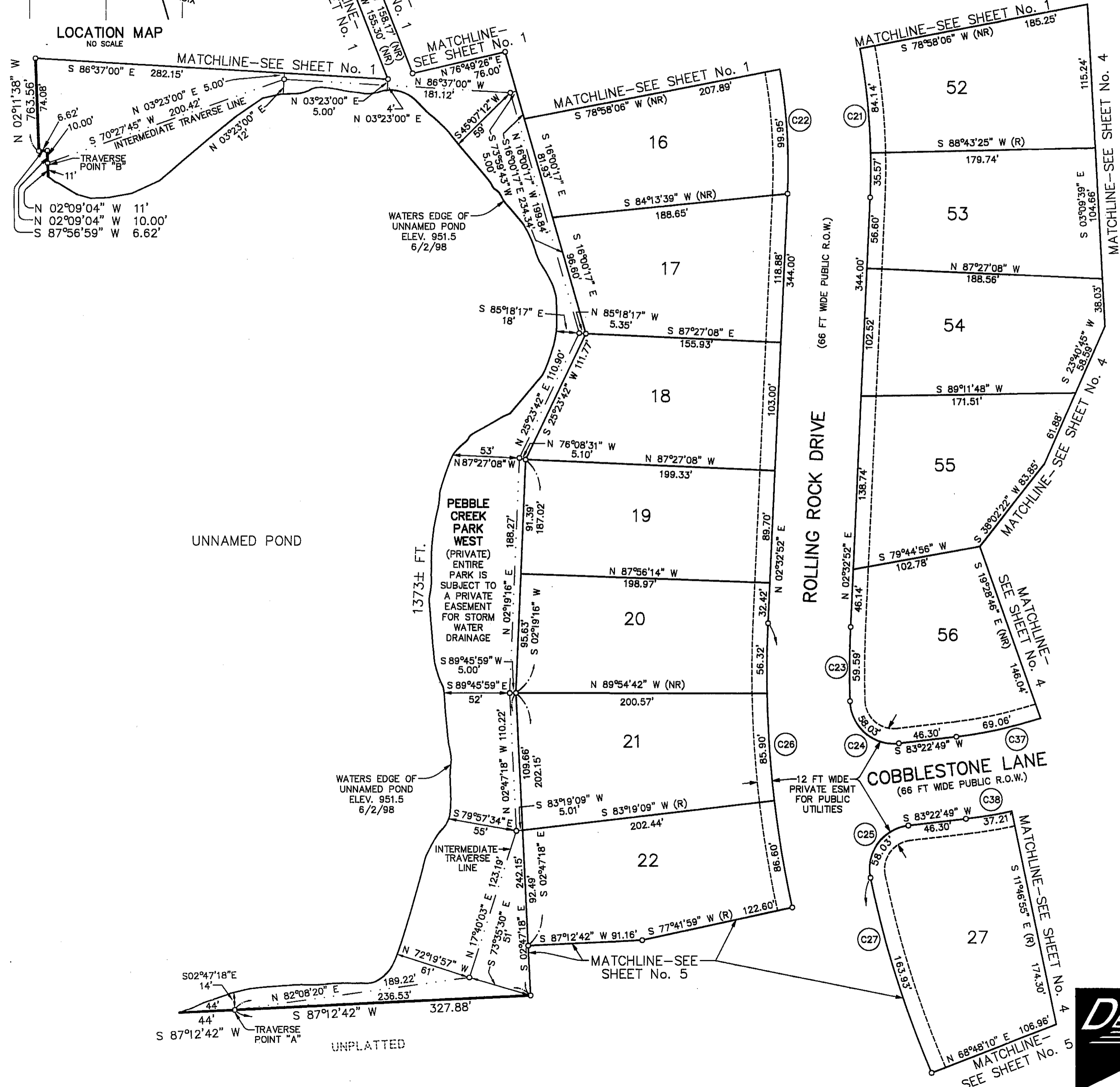


- LEGEND:**
- 1) ALL DIMENSIONS SHOWN ARE IN FEET.
 - 2) ALL CURVILINEAR DIMENSIONS SHOWN ARE ARC LENGTHS.
 - 3) THE SYMBOL "o" INDICATES A CONCRETE MONUMENT 4 INCHES IN DIAMETER, 36 INCHES IN LENGTH, ENCASING A 1/2 INCH DIAMETER x 36 INCH LONG STEEL ROD.
 - 4) THE SYMBOL "•" INDICATES A FOUND CONCRETE MONUMENT 4 INCHES IN DIAMETER, ENCASING A 1/2 INCH DIAMETER STEEL ROD.
 - 5) LOT CORNERS ARE MARKED WITH 3/4 INCH DIAMETER x 18 INCH LONG STEEL PIPES WITH YELLOW PLASTIC CAPS MARKED "MAB 33971".
 - 6) THE SYMBOL (R) INDICATES A RADIAL LINE.
 - 7) THE SYMBOL (NR) INDICATES A NON-RADIAL LINE.
 - 8) BEARINGS WERE ESTABLISHED FROM MICHIGAN DEPARTMENT OF TRANSPORTATION'S FILE No. 47-4-2, ROUTE I-96, CONTROL SECTION 47065, SHEET No. 40 AND RECORDED IN LIBER 393, PAGE 108, LIVINGSTON COUNTY RECORDS.

ALL DRAIN EASEMENTS ARE UNDER THE JURISDICTION OF THE LIVINGSTON COUNTY DRAIN COMMISSIONER AND THE PEBBLE CREEK DRAIN DRAINAGE DISTRICT.

CURVE TABLE

CURVE	RADIUS	LENGTH	CHORD	BEARING	DELTA
C18	75.00'	350.19'	108.34'	S77°21'53"W	267°31'11"
C21	533.00'	126.33'	126.03'	N04°14'31"W	13°34'47"
C22	467.00'	110.69'	110.42'	N04°14'31"W	13°34'47"
C23	817.00'	59.59'	59.58'	S00°27'30"W	04°10'45"
C24	35.00'	58.03'	51.60'	N49°07'32"W	94°59'19"
C25	35.00'	58.03'	51.60'	S35°53'09"W	94°59'19"
C26	883.00'	533.26'	525.20'	N14°45'13"W	34°36'10"
C27	817.00'	291.55'	290.01'	S21°49'54"E	20°26'47"
C37	347.00'	524.12'	475.70'	S40°06'35"W	86°32'28"
C38	413.00'	623.81'	566.18'	N40°06'35"E	86°32'28"

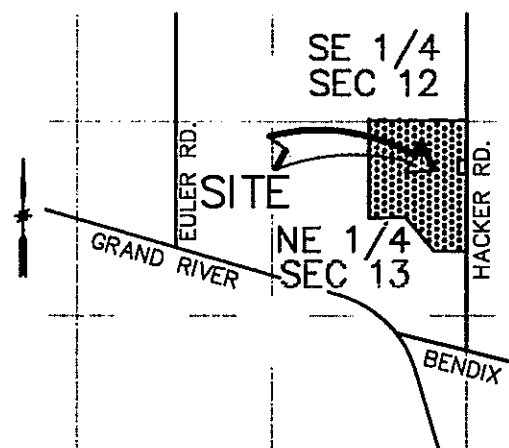


DESINE INC ENGINEERS
7011 GRAND RIVER AVE.
BRIGHTON, MICHIGAN 48114
(810) 227-9533

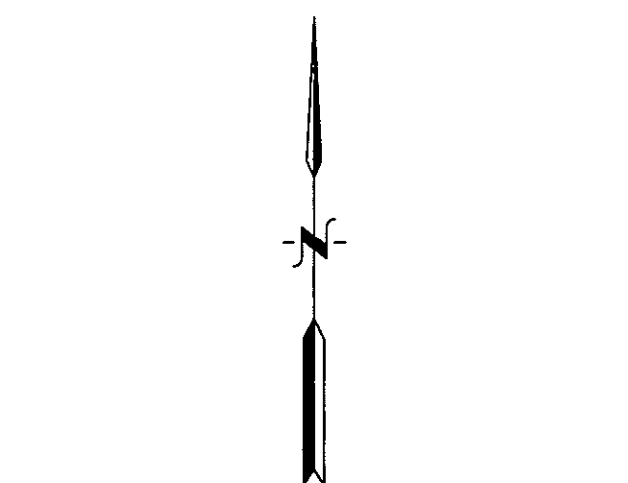
MARY A. BARNWELL
PROFESSIONAL SURVEYOR
SURVEYOR/NO. 33971

PEBBLE CREEK

A Subdivision of Part of the Northeast 1/4 of Section 13
and Part of the Southeast 1/4 of Section 12
Town 2 North, Range 5 East,
Genoa Township, Livingston County, Michigan

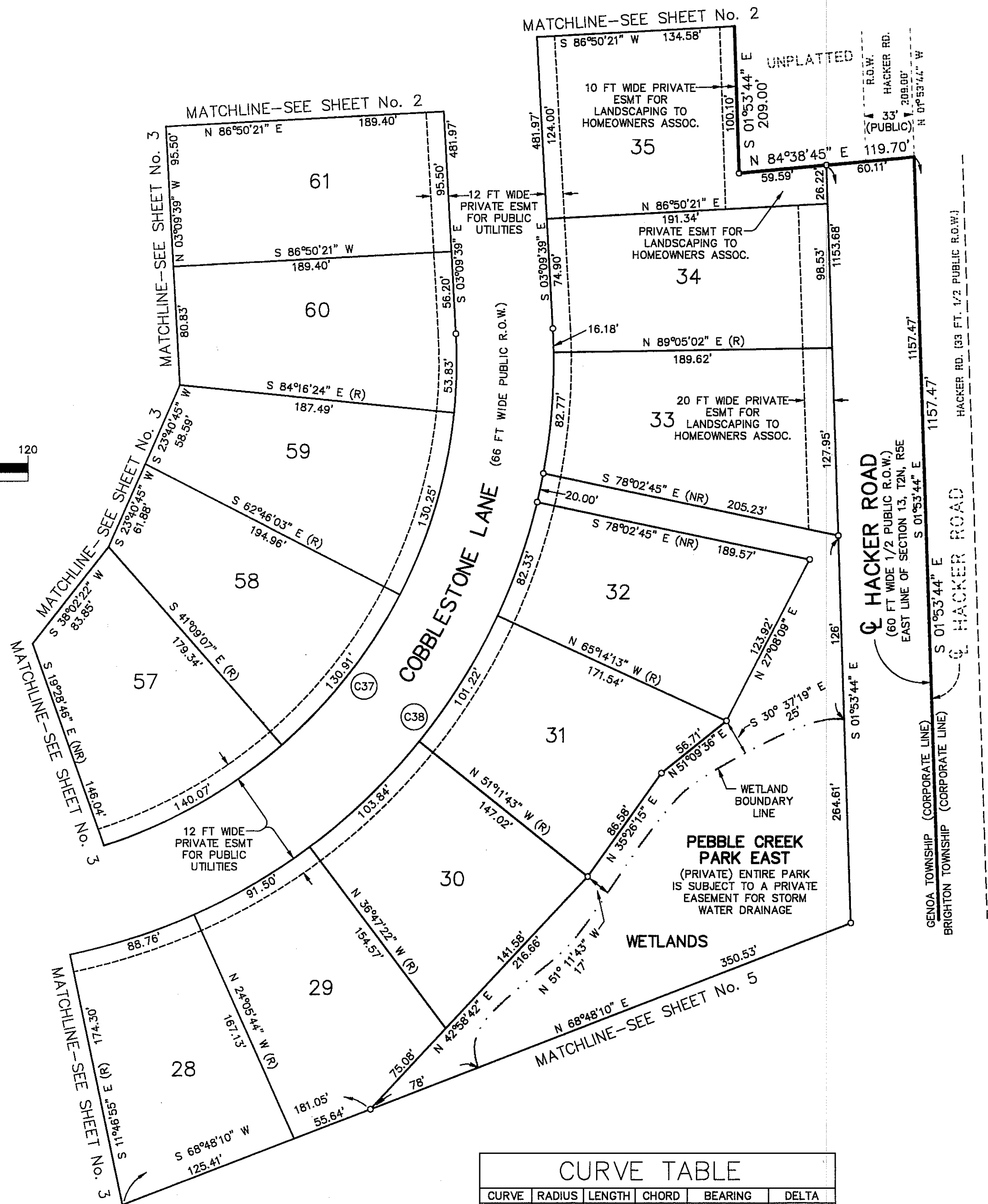


LOCATION MAP
NO SCALE



GRAPHIC SCALE

(IN FEET)
1 INCH = 60 FEET



LEGEND:

- 1) ALL DIMENSIONS SHOWN ARE IN FEET.
- 2) ALL CURVILINEAR DIMENSIONS SHOWN ARE ARC LENGTHS.
- 3) THE SYMBOL "o" INDICATES A CONCRETE MONUMENT 4 INCHES IN DIAMETER, 36 INCHES IN LENGTH, ENCASING A 1/2 INCH DIAMETER x 36 INCH LONG STEEL ROD.
- 4) THE SYMBOL "•" INDICATES A FOUND CONCRETE MONUMENT 4 INCHES IN DIAMETER, ENCASING A 1/2 INCH DIAMETER STEEL ROD.
- 5) LOT CORNERS ARE MARKED WITH 3/4 INCH DIAMETER x 18 INCH LONG STEEL PIPES WITH YELLOW PLASTIC CAPS MARKED "MAB 33971".
- 6) THE SYMBOL (R) INDICATES A RADIAL LINE.
- 7) THE SYMBOL (NR) INDICATES A NON-RADIAL LINE.
- 8) BEARINGS WERE ESTABLISHED FROM MICHIGAN DEPARTMENT OF TRANSPORTATION'S FILE No. 47-4-2, ROUTE I-96, CONTROL SECTION 47065, SHEET No. 40 AND RECORDED IN LIBER 393, PAGE 108, LIVINGSTON COUNTY RECORDS.

ALL DRAIN EASEMENTS ARE UNDER THE JURISDICTION OF THE LIVINGSTON COUNTY DRAIN COMMISSIONER AND THE PEBBLE CREEK DRAIN DRAINAGE DISTRICT.

CURVE TABLE

CURVE	RADIUS	LENGTH	CHORD	BEARING	DELTA
C37	347.00'	524.12'	475.70'	S40°06'35"W	86°32'28"
C38	413.00'	623.81'	566.18'	S40°06'35"W	86°32'28"

DESINE INC ENGINEERS

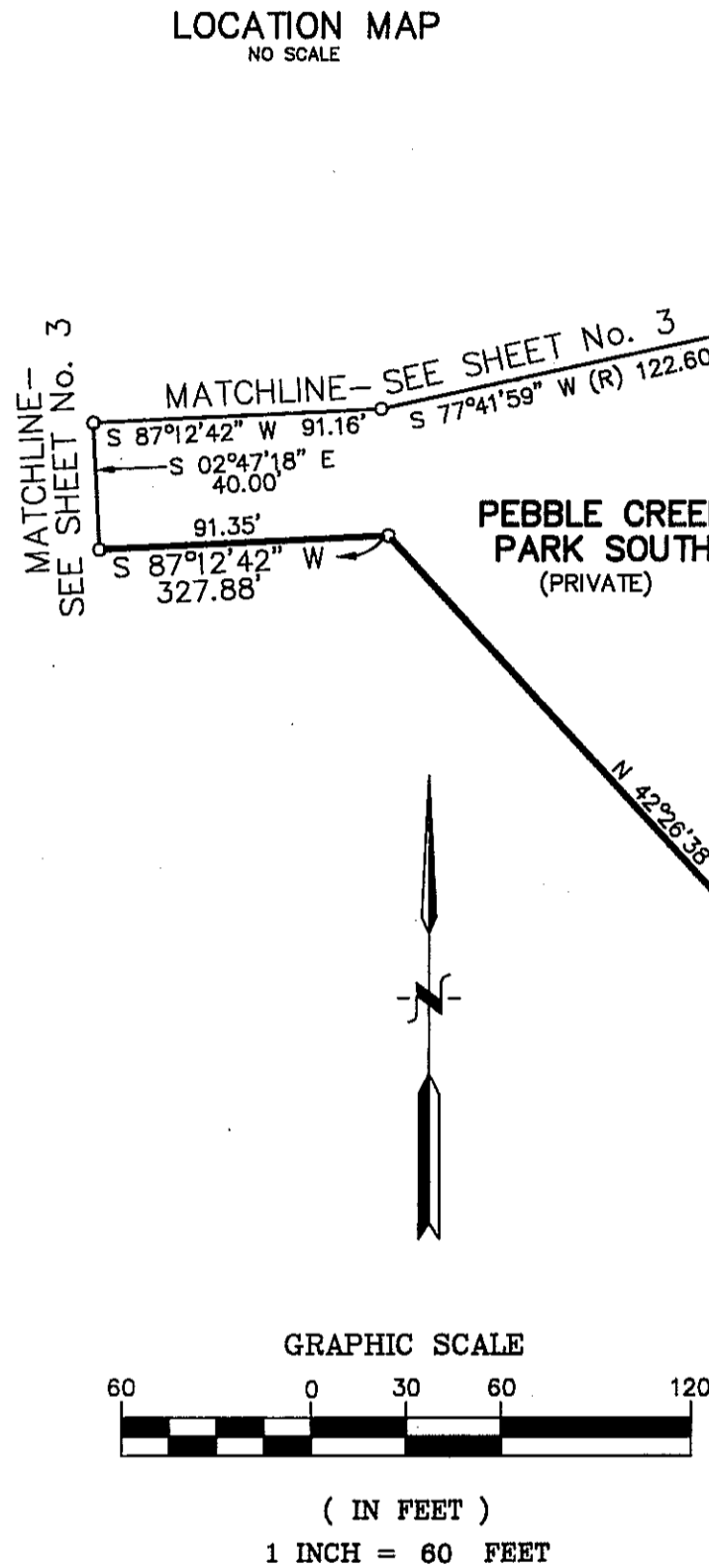
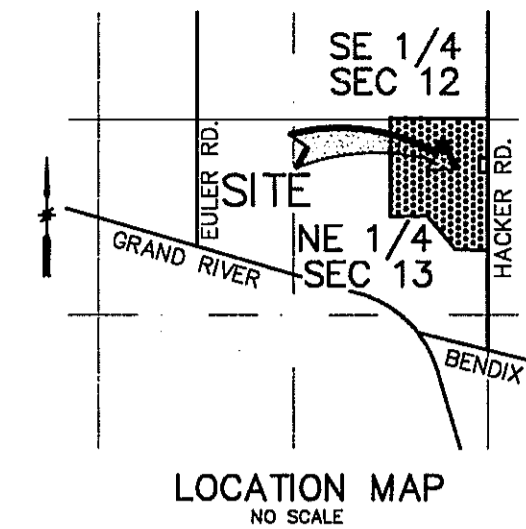
7011 GRAND RIVER AVE.
BRIGHTON, MICHIGAN 48114
(810) 227-9533



MARY A. BARNWELL
PROFESSIONAL SURVEYOR
SURVEYOR NO. 33971

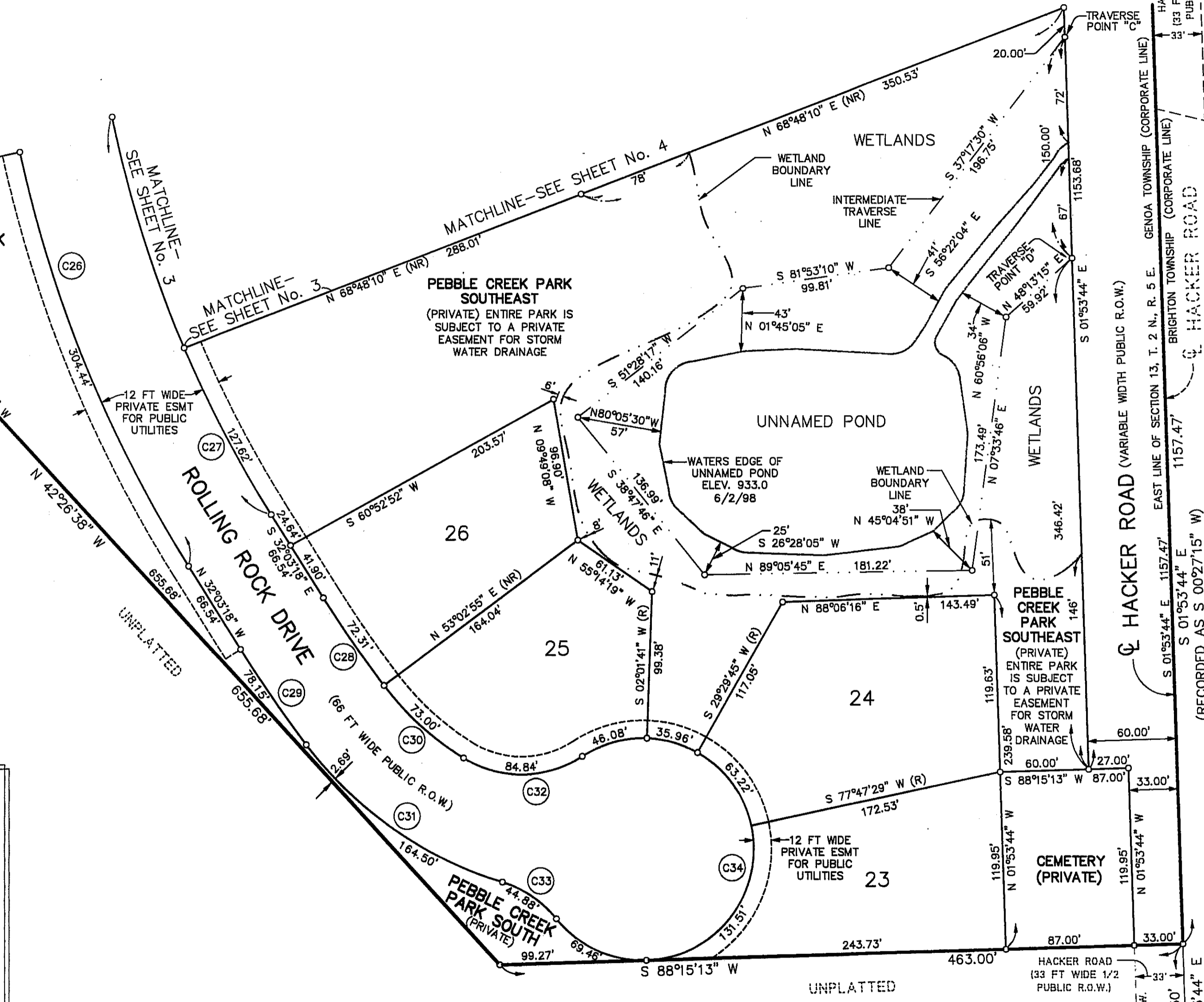
PEBBLE CREEK

A Subdivision of Part of the Northeast 1/4 of Section 13
and Part of the Southeast 1/4 of Section 12
Town 2 North, Range 5 East,
Genoa Township, Livingston County, Michigan



- LEGEND:**
- 1) ALL DIMENSIONS SHOWN ARE IN FEET.
 - 2) ALL CURVILINEAR DIMENSIONS SHOWN ARE ARC LENGTHS.
 - 3) THE SYMBOL "o" INDICATES A CONCRETE MONUMENT 4 INCHES IN DIAMETER, 36 INCHES IN LENGTH, ENCASING A 1/2 INCH DIAMETER x 3/8 INCH LONG STEEL ROD.
 - 4) THE SYMBOL "•" INDICATES A FOUND CONCRETE MONUMENT 4 INCHES IN DIAMETER, ENCASING A 1/2 INCH DIAMETER STEEL ROD.
 - 5) LOT CORNERS ARE MARKED WITH 3/4 INCH DIAMETER x 18 INCH LONG STEEL PIPES WITH YELLOW PLASTIC CAPS MARKED "MAB 33971".
 - 6) THE SYMBOL (R) INDICATES A RADIAL LINE.
 - 7) THE SYMBOL (NR) INDICATES A NON-RADIAL LINE.
 - 8) BEARINGS WERE ESTABLISHED FROM MICHIGAN DEPARTMENT OF TRANSPORTATION'S FILE No. 47-4-2, ROUTE I-96, CONTROL SECTION 47065, SHEET No. 40 AND RECORDED IN LIBER 393, PAGE 108, LIVINGSTON COUNTY RECORDS.

ALL DRAIN EASEMENTS ARE UNDER THE JURISDICTION OF THE LIVINGSTON COUNTY DRAIN COMMISSIONER AND THE PEBBLE CREEK DRAIN DRAINAGE DISTRICT.



CURVE TABLE

CURVE	RADIUS	LENGTH	CHORD	BEARING	DELTA
C26	883.00'	533.26'	525.20'	S14°45'13"E	34°36'10"
C27	817.00'	291.55'	290.01'	S21°49'54"E	20°26'47"
C28	817.00'	72.31'	72.29'	S34°35'26"E	05°04'16"
C29	883.00'	78.15'	78.13'	S34°35'26"E	05°04'16"
C30	197.00'	73.00'	72.58'	S47°44'30"E	21°13'53"
C31	263.00'	164.50'	161.83'	S55°02'41"E	35°50'14"
C32	75.00'	84.84'	80.39'	N89°14'09"E	64°48'48"
C33	75.00'	44.88'	44.21'	N55°49'20"W	34°16'55"
C34	75.00'	346.23'	111.04'	S09°04'26"W	264°29'22"

DESINE INC ENGINEERS
7011 GRAND RIVER AVE.
BRIGHTON, MICHIGAN 48114
(810) 227-9533



MARY A. BARNWELL
PROFESSIONAL SURVEYOR
SURVEYOR NO. 33971

WOODLAND LAKE WEST
LIVINGSTON COUNTY CONDOMINIUM SUBDIVISION PLAN No. 30
LIBER 1484, PAGES 62 THROUGH 68

UNPLATTED

UNPLATTED