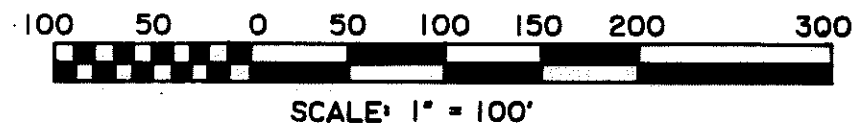
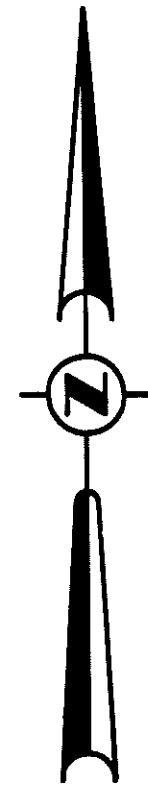


OAK POINTE NORTH NO. 2

A SUBDIVISION OF PART OF THE SW 1/4 OF SEC. 28,
T2N-R5E GENOA TOWNSHIP, LIVINGSTON COUNTY, MICH.



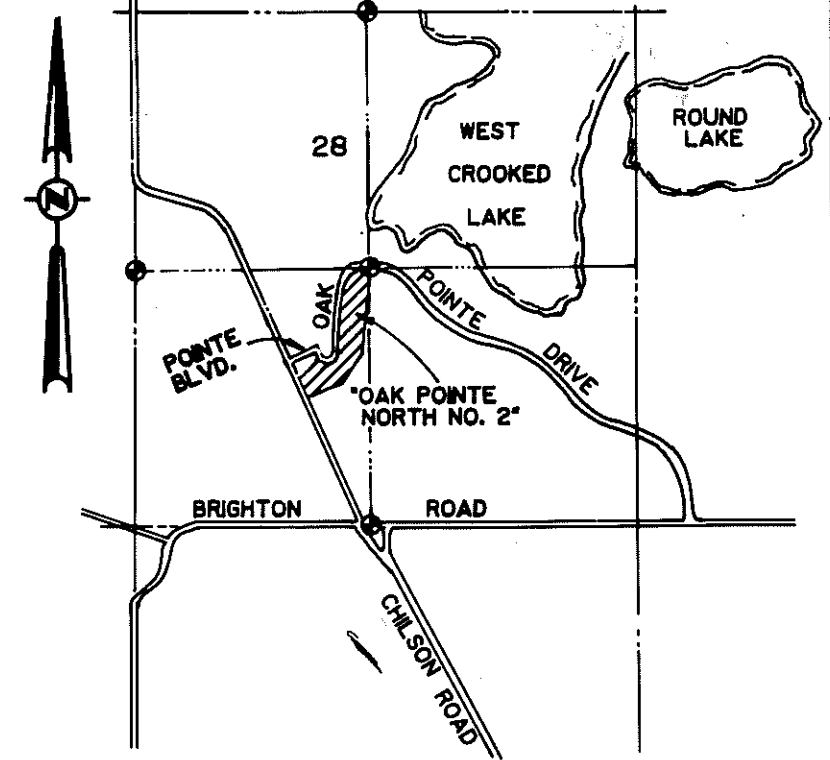
W 1/4 CORNER SECTION 28 T2N-R5E

EAST-WEST 1/4 LINE, SECTION 28

OUTLOT "A"

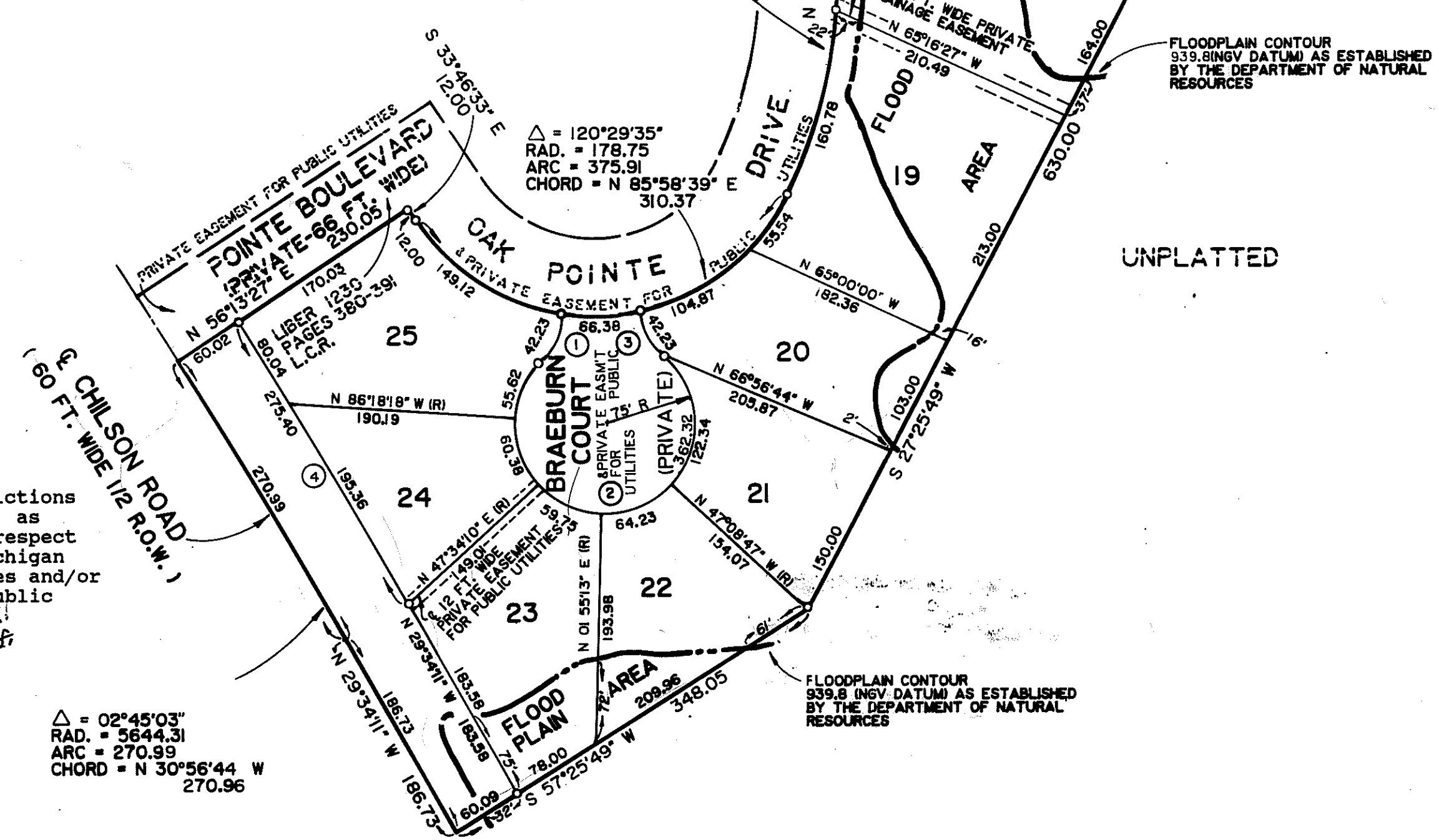
OAK POINTE NORTH NO. 1 SUB.

(LIBER 25 OF PLATS PAGES 17-19 L.C.R.)



LOCATION MAP
SCALE: 1"=2000'

Curve Data					
NO.	RADIUS	DELTA	ARC	CHORD	BEARING
1	50.00	48° 23' 40"	42.23	40.99	N 21° 59' 05" E
2	75.00	276° 47' 19"	362.32	99.60	S 87° 47' 15" W
3	50.00	48° 23' 40"	42.23	40.99	S 26° 24' 35" E
4	5704.31	02° 45' 58"	275.40	275.37	N 30° 57' 11" W



This plat is subject to restrictions required by Act 288 of 1967, as amended on certain lots with respect to the requirements of the Michigan Department of Natural Resources and/or the Michigan Department of Public Health, which are recorded in Liber 1247, pages 573-608 of records of this county.

LEGEND:
 All dimensions are shown in feet.
 All curvilinear dimensions are shown along the arc.
 The symbol "o" indicates a concrete monument, which is 4" in diameter x 36" long, encasing a 1/2" iron rod.
 The symbol (R) denotes a radial lot line.
 All lot markers are 1/2 inch iron rods and are 18 inches in length capped with yellow plastic caps bearing the Surveyor's registration number.
 Bearings were established from the recorded Plat of "Oak Pointe North No.1", Liber 25 of Plats, page 17-19, Livingston County Records.

PREPARED AND DRAFTED BY
 Boss Engineering Company
 3121 East Grand River
 Howell, Michigan 48843

Gary R. Boss
 Gary R. Boss

