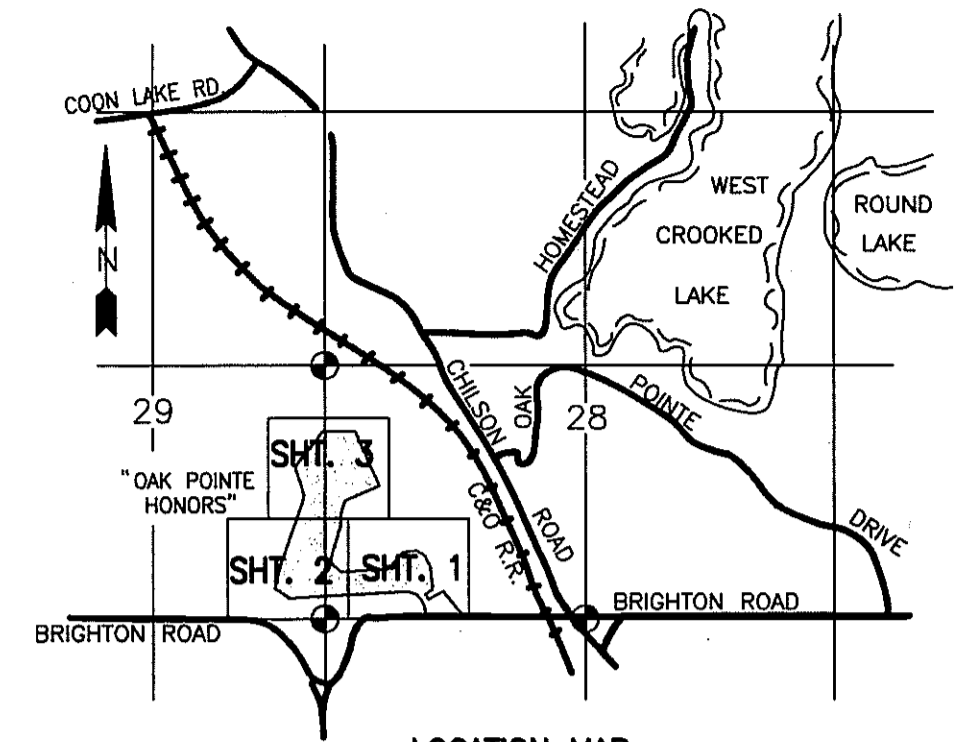
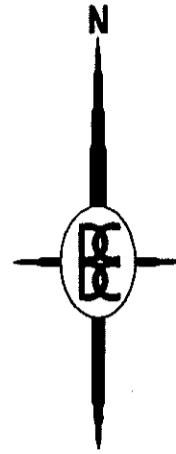
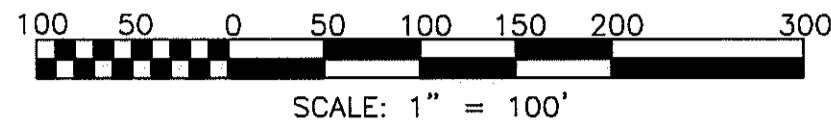


THIS PLAT IS SUBJECT TO RESTRICTIONS REQUIRED BY ACT 288 OF 1967, AS AMENDED ON CERTAIN LOTS WITH RESPECT TO THE REQUIREMENTS OF THE MICHIGAN DEPARTMENT OF ENVIRONMENTAL QUALITY WHICH IS RECORDED IN LIBER 2103, PAGES 113-105 OF RECORDS OF THIS COUNTY.

OAK POINTE HONORS

A PART OF THE SW 1/4 OF SECTION 28 AND OF THE SE 1/4 OF SECTION 29, T2N-R5E, GENOA TOWNSHIP, LIVINGSTON COUNTY, MICHIGAN



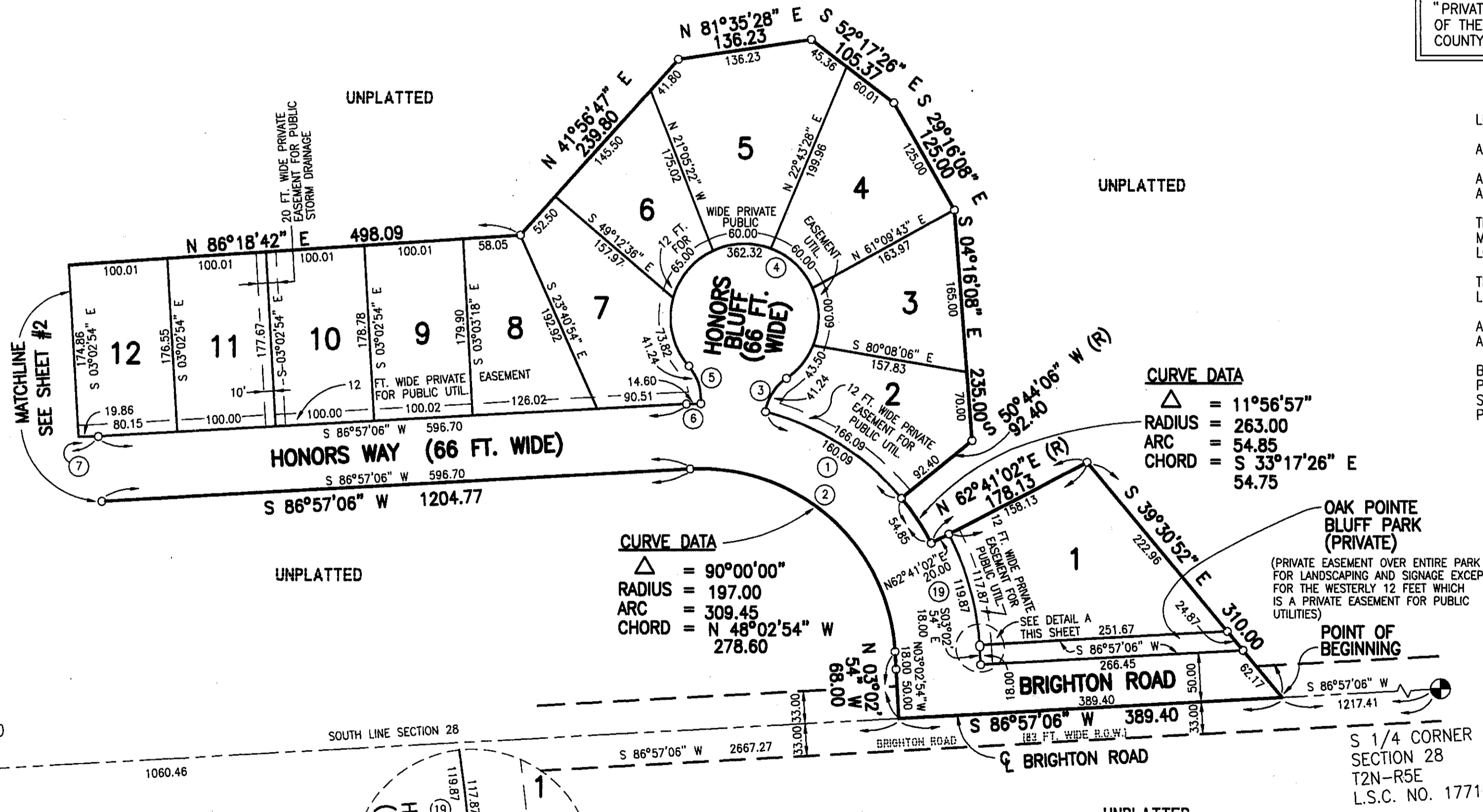
LOCATION MAP
SCALE: 1" = 2000'

NOTE:
ALL DRAIN EASEMENTS AND DETENTION AREAS ARE UNDER THE JURISDICTION OF THE LIVINGSTON COUNTY DRAIN COMMISSIONER. USE OF THE WORD "PRIVATE" DOES NOT LIMIT IN ANY WAY THE SCOPE OF THE EASEMENT GRANTED TO THE LIVINGSTON COUNTY DRAIN COMMISSIONER.

W 1/4 CORNER SECTION 28
T2N-R5E
L.S.C. NO. 956

N 02°16'28" W 2673.04
WEST LINE SECTION 28

SW CORNER SECTION 28
T2N-R5E
L.S.C. NO. 1770



CURVE DATA

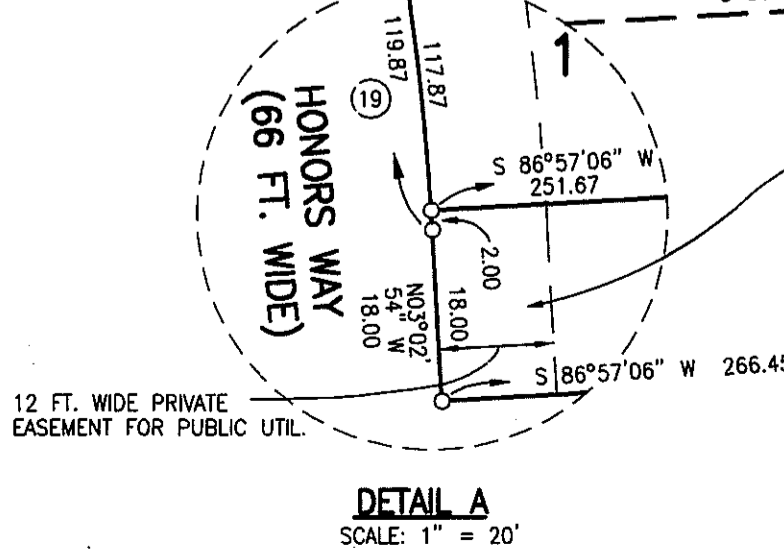
Δ	= 11°56'57"
RADIUS	= 263.00
ARC	= 54.85
CHORD	= S 33°17'26" E 54.75

CURVE DATA

Δ	= 90°00'00"
RADIUS	= 197.00
ARC	= 309.45
CHORD	= N 48°02'54" W 278.60

CURVE DATA

CURVE	RADIUS	CENTRAL ANGLE	ARC LENGTH	CHORD LENGTH	BEARING DIRECTION
1	263.00	48°07'54"	166.09	163.34	S 57°21'58" E
2	197.00	90°00'00"	309.45	278.60	N 48°02'54" W
3	50.00	47°15'07"	41.24	40.08	S 32°06'37" W
4	75.00	276°47'19"	362.32	99.60	S 82°39'29" E
5	50.00	47°15'07"	41.24	40.08	N 17°25'35" W
6	263.00	03°10'48"	14.60	14.60	S 88°32'29" W
7	347.00	112°29'19"	681.26	577.00	S 36°48'15" E
19	283.00	24°16'04"	119.87	118.97	S 15°10'56" E



LEGEND:
ALL DIMENSIONS ARE SHOWN IN FEET.
ALL CURVILINEAR DIMENSIONS ARE SHOWN ALONG THE ARC.
THE SYMBOL "O" INDICATES A CONCRETE MONUMENT, WHICH IS 4" IN DIAMETER X 36" LONG, ENCASING A 1/2" IRON ROD.
THE SYMBOL (R) DENOTES A RADIAL LOT LINE.
ALL LOT MARKERS ARE 1/2 INCH IRON RODS AND ARE 18 INCHES IN LENGTH. (NOT CAPPED)
BEARINGS WERE ESTABLISHED FROM THE RECORDED PLAT OF "OAK POINTE HIGHLANDS NO. 2" A SUBDIVISION AS RECORDED IN LIBER 28 OF PLATS, PAGES 43-45, LIVINGSTON COUNTY RECORDS.

PREPARED AND DRAFTED BY:
BOSS ENGINEERING COMPANY
3121 EAST GRAND RIVER
HOWELL, MICHIGAN 48843

Gary R. Boss
GARY R. BOSS



THIS PLAT IS SUBJECT TO RESTRICTIONS REQUIRED BY ACT 288 OF 1967, AS AMENDED ON CERTAIN LOTS WITH RESPECT TO THE REQUIREMENTS OF THE MICHIGAN DEPARTMENT OF ENVIRONMENTAL QUALITY WHICH IS RECORDED IN LIBER 2103, PAGES 903-905 OF RECORDS OF THIS COUNTY.

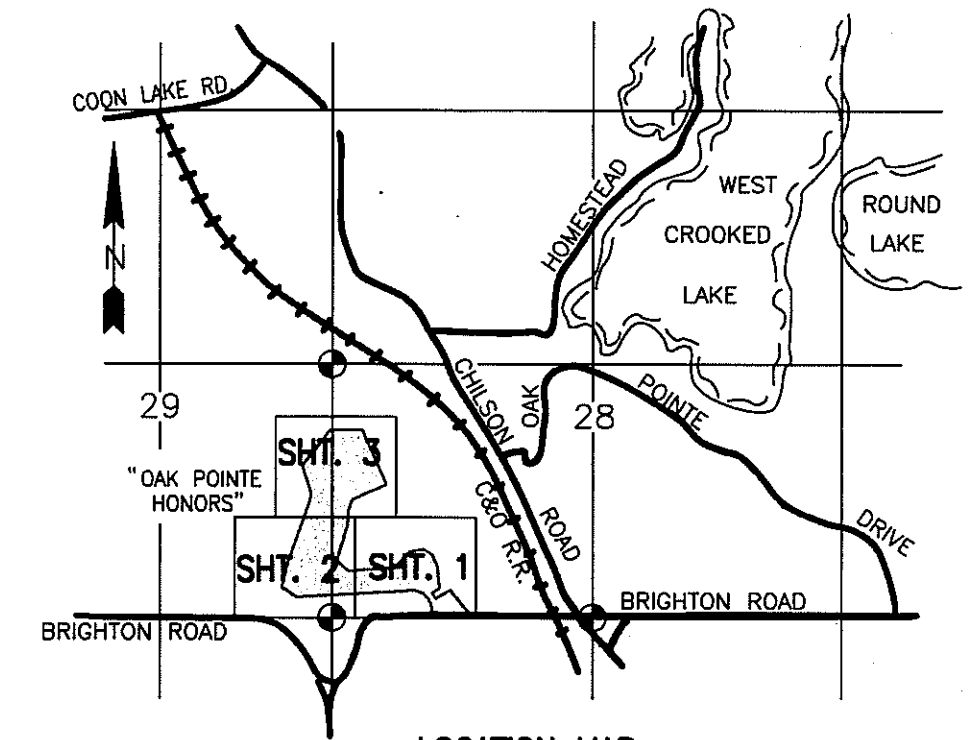
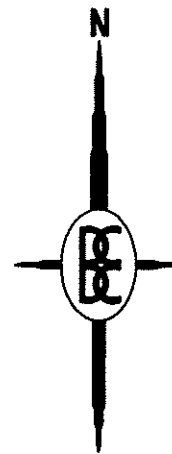
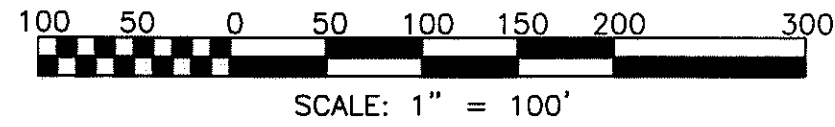
OAK POINTE HONORS

A PART OF THE SW 1/4 OF SECTION 28 AND OF THE SE 1/4 OF SECTION 29, T2N-R5E, GENOA TOWNSHIP, LIVINGSTON COUNTY, MICHIGAN

CERTIFIED TRUE COPY OF RECORDED PLAT BY DEPARTMENT OF CONSUMER AND INDUSTRY SERVICES

BY Maynard R. Dyer
MAYNARD R. DYER, P.S. M
MANAGER
SUBDIVISION CONTROL UNIT

DATE 12-3-96



LOCATION MAP
SCALE: 1" = 2000'

NOTE:
ALL DRAIN EASEMENTS AND DETENTION AREAS ARE UNDER THE JURISDICTION OF THE LIVINGSTON COUNTY DRAIN COMMISSIONER. USE OF THE WORD "PRIVATE" DOES NOT LIMIT IN ANY WAY THE SCOPE OF THE EASEMENT GRANTED TO THE LIVINGSTON COUNTY DRAIN COMMISSIONER.

LEGEND:

ALL DIMENSIONS ARE SHOWN IN FEET.

ALL CURVILINEAR DIMENSIONS ARE SHOWN ALONG THE ARC.

THE SYMBOL "O" INDICATES A CONCRETE MONUMENT, WHICH IS 4" IN DIAMETER X 36" LONG, ENCASING A 1/2" IRON ROD.

THE SYMBOL (R) DENOTES A RADIAL LOT LINE.

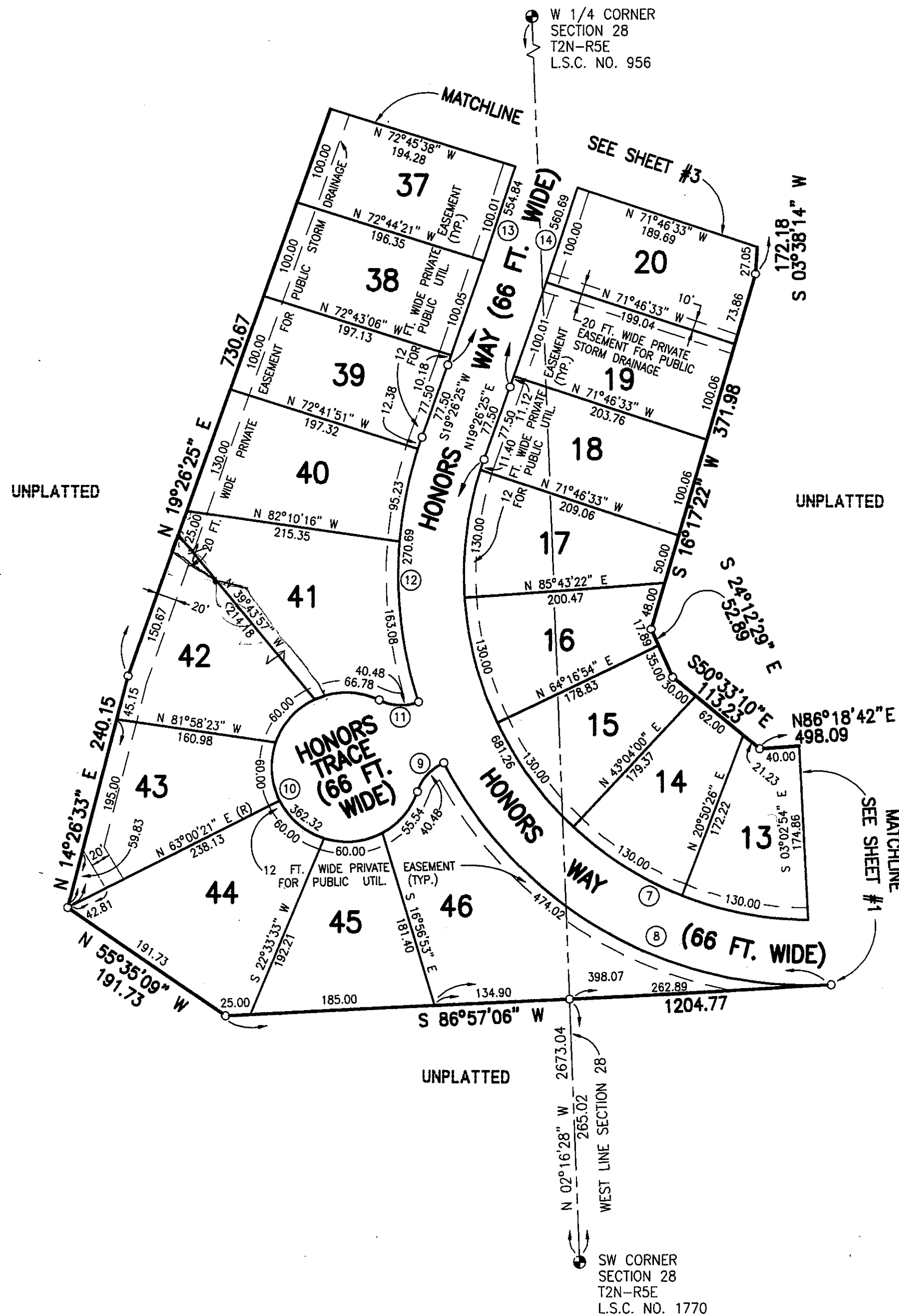
ALL LOT MARKERS ARE 1/2 INCH IRON RODS AND ARE 18 INCHES IN LENGTH. (NOT CAPPED)

BEARINGS WERE ESTABLISHED FROM THE RECORDED PLAT OF "OAK POINTE HIGHLANDS NO. 2" A SUBDIVISION AS RECORDED IN LIBER 28 OF PLATS, PAGES 43-45, LIVINGSTON COUNTY RECORDS.

PREPARED AND DRAFTED BY:

BOSS ENGINEERING COMPANY
3121 EAST GRAND RIVER
HOWELL, MICHIGAN 48843

Gary R. Boss
GARY R. BOSS



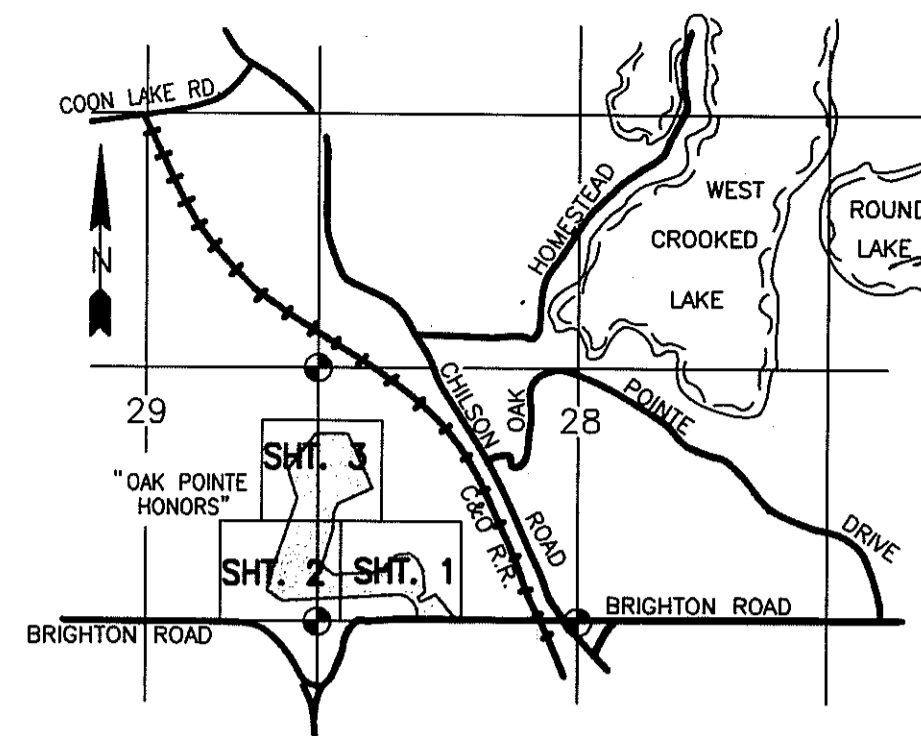
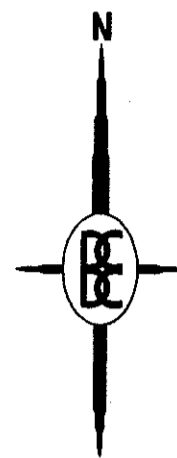
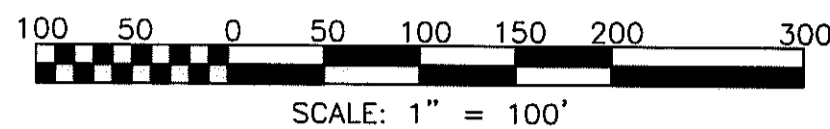
CURVE DATA					
CURVE	RADIUS	CENTRAL ANGLE	ARC LENGTH	CHORD LENGTH	BEARING DIRECTION
7	347.00	112°29'19"	681.26	577.00	S 36°48'15" E
8	413.00	65°45'42"	474.02	448.43	N 60°10'03" W
9	50.00	46°23'21"	40.48	39.39	S 42°06'03" W
10	75.00	276°47'19"	362.32	99.60	N 22°41'58" W
11	50.00	46°23'21"	40.48	39.39	S 87°29'59" E
12	413.00	37°33'09"	270.69	265.87	N 00°39'50" E
13	7712.22	04°07'19"	554.84	554.72	N 17°22'45" E
14	7778.22	04°07'49"	560.69	560.57	S 17°22'30" W



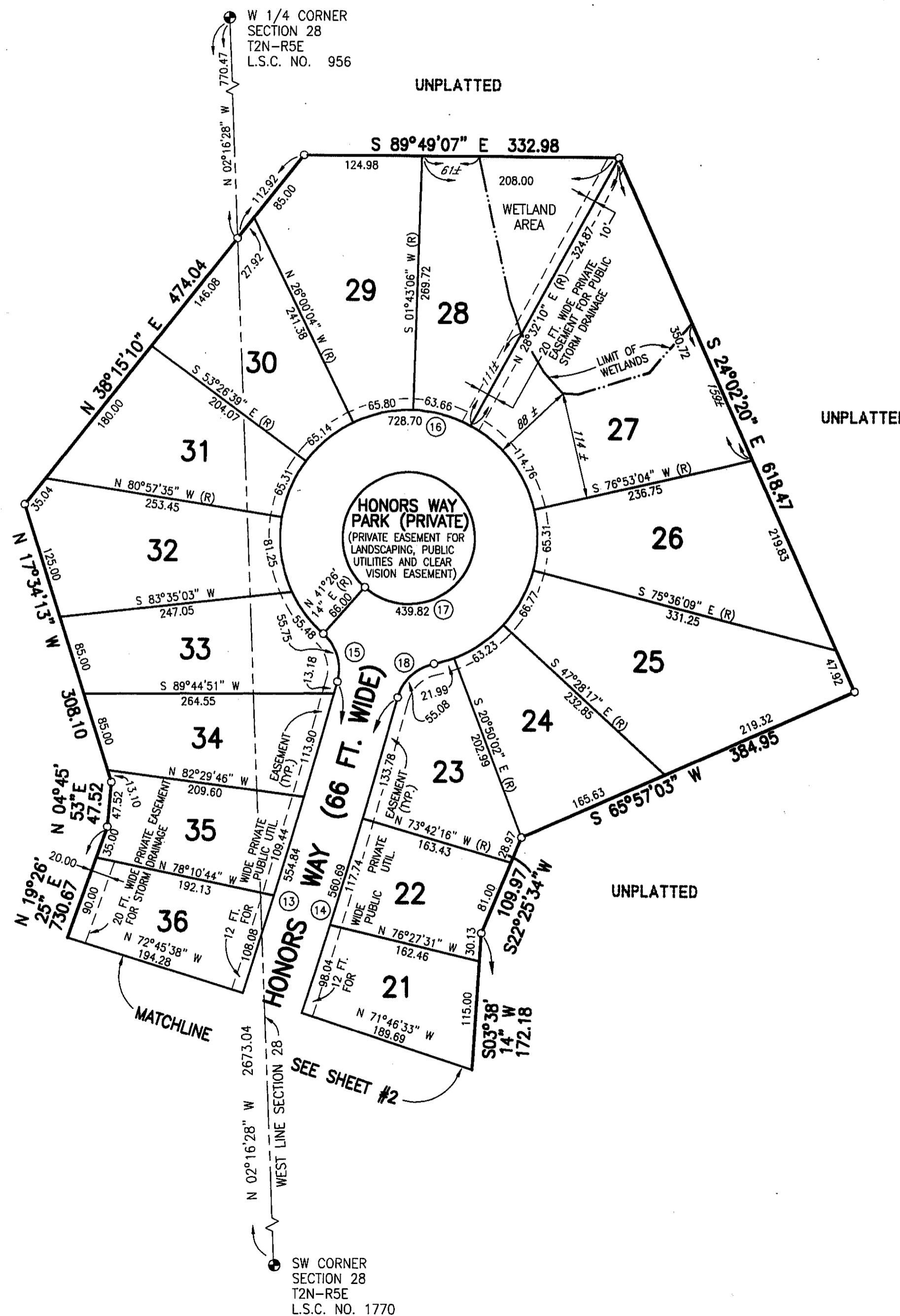
THIS PLAT IS SUBJECT TO RESTRICTIONS
 REQUIRED BY ACT 288 OF 1967, AS
 AMENDED ON CERTAIN LOTS WITH RESPECT
 TO THE REQUIREMENTS OF THE MICHIGAN
 DEPARTMENT OF ENVIRONMENTAL QUALITY
 WHICH IS RECORDED IN LIBER-2103
 PAGES 813-905 OF RECORDS OF THIS COUNTY.

OAK POINTE HONORS

A PART OF THE SW 1/4 OF SECTION 28 AND
 OF THE SE 1/4 OF SECTION 29, T2N-R5E,
 GENOA TOWNSHIP, LIVINGSTON COUNTY, MICHIGAN



LOCATION MAP
 SCALE: 1" = 2000'



NOTE:
 ALL DRAIN EASEMENTS AND DETENTION AREAS ARE
 UNDER THE JURISDICTION OF THE LIVINGSTON
 COUNTY DRAIN COMMISSIONER. USE OF THE WORD
 "PRIVATE" DOES NOT LIMIT IN ANY WAY THE SCOPE
 OF THE EASEMENT GRANTED TO THE LIVINGSTON
 COUNTY DRAIN COMMISSIONER.

LEGEND:
 ALL DIMENSIONS ARE SHOWN IN FEET.
 ALL CURVILINEAR DIMENSIONS ARE SHOWN
 ALONG THE ARC.
 THE SYMBOL "O" INDICATES A CONCRETE
 MONUMENT, WHICH IS 4" IN DIAMETER X 36"
 LONG, ENCASING A 1/2" IRON ROD.
 THE SYMBOL (R) DENOTES A RADIAL LOT
 LINE.
 ALL LOT MARKERS ARE 1/2 INCH IRON RODS
 AND ARE 18 INCHES IN LENGTH. (NOT CAPPED)
 BEARINGS WERE ESTABLISHED FROM THE RECORDED
 PLAT OF "OAK POINTE HIGHLANDS NO. 2" A
 SUBDIVISION AS RECORDED IN LIBER 28 OF PLATS,
 PAGES 43-45, LIVINGSTON COUNTY RECORDS.
 ALL DIMENSIONS SHOWN IN ITALICS 100
 ARE FROM THE WETLANDS TO THE TRAVERSE
 OR LOT LINE.

PREPARED AND DRAFTED BY:
BOSS ENGINEERING COMPANY
 3121 EAST GRAND RIVER
 HOWELL, MICHIGAN 48843

Gary R. Boss
 GARY R. BOSS

CURVE DATA					
CURVE	RADIUS	CENTRAL ANGLE	ARC LENGTH	CHORD LENGTH	BEARING DIRECTION
13	7712.22	04°07'19"	554.84	554.72	N 17°22'45" E
14	7778.22	04°07'49"	560.69	560.57	S 17°22'30" W
15	50.00	63°52'51"	55.75	52.90	N 16°37'20" W
16	136.00	306°59'38"	728.70	121.38	S 75°03'57" E
17	70.00	360°00'00"	439.82		
18	50.00	63°07'16"	55.08	52.34	S 46°52'14" W

