

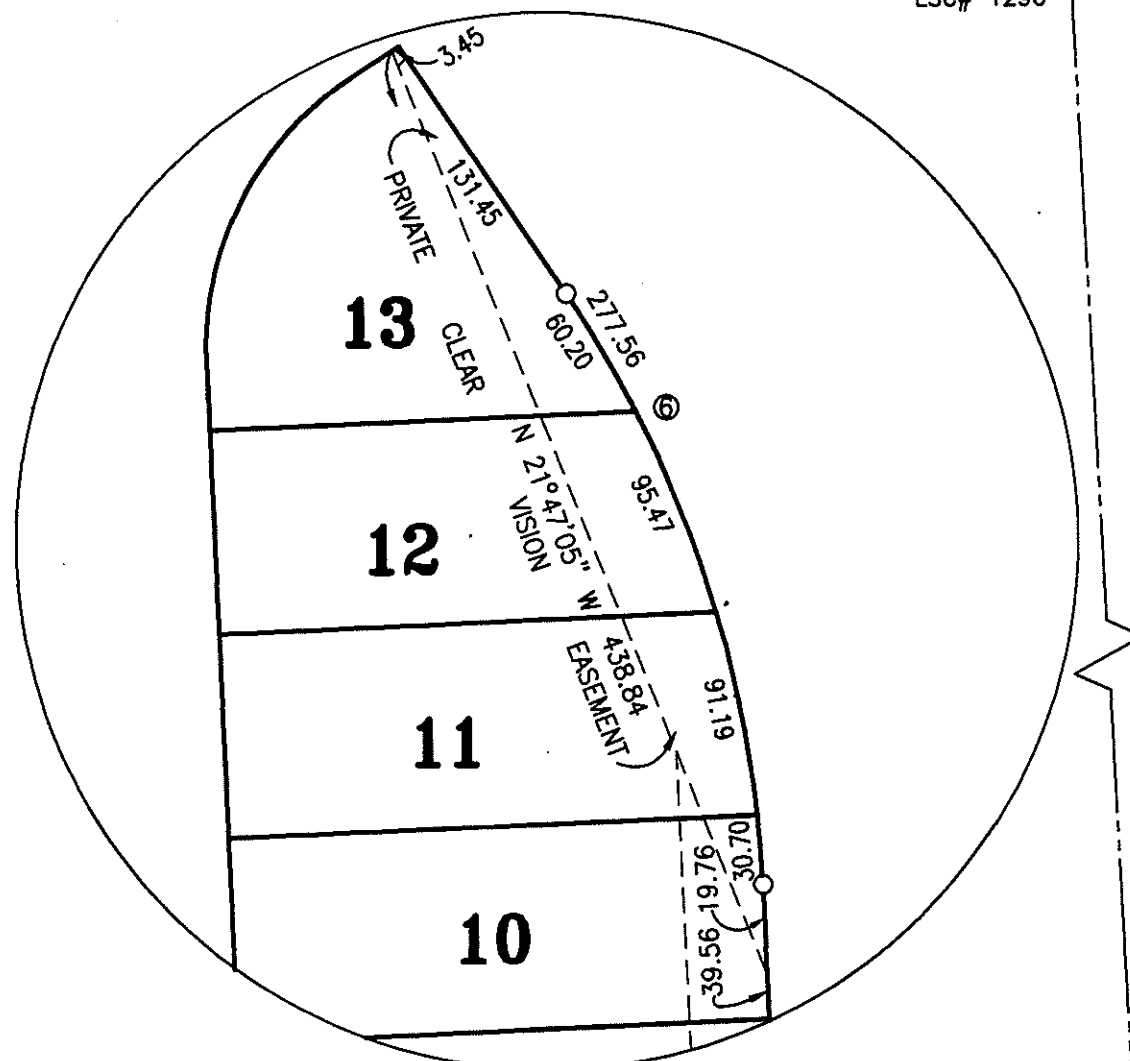
OAK POINTE HILLS

A PART OF THE NW 1/4, SE 1/4 & SW 1/4 OF SECTION 27, T2N-R5E, GENOA TOWNSHIP, LIVINGSTON COUNTY MICHIGAN

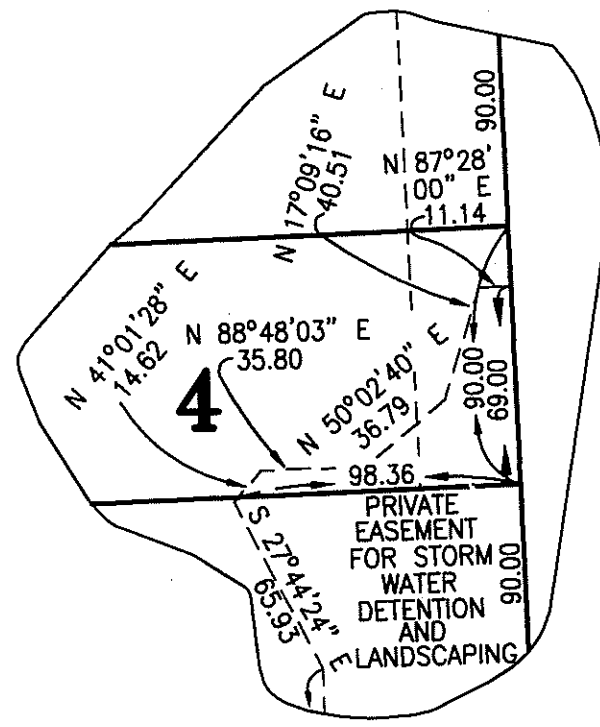
NOTE:
ALL DRAIN EASEMENTS AND DETENTION AREAS UNDER THE JURISDICTION OF THE LIVINGSTON COUNTY DRAIN COMMISSIONER. USE OF THE WORD "PRIVATE" DOES NOT LIMIT IN ANY WAY THE SCOPE OF THE EASEMENT GRANTED TO THE LIVINGSTON COUNTY DRAIN COMMISSIONER.

WEST 1/4 COR. SEC. 27 T2N-R5E LSC# 1296

CEN. SEC. 27 T2N-R5E LSC# 1296

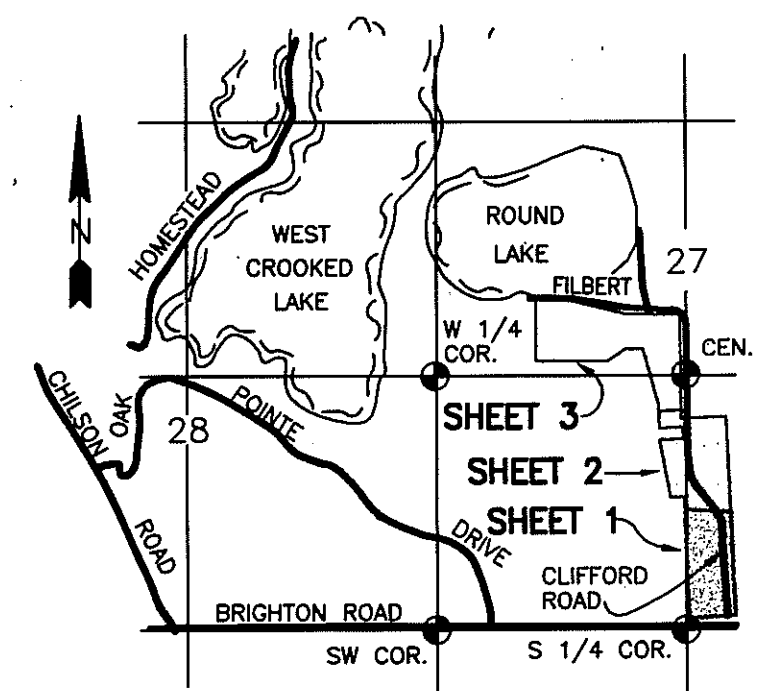
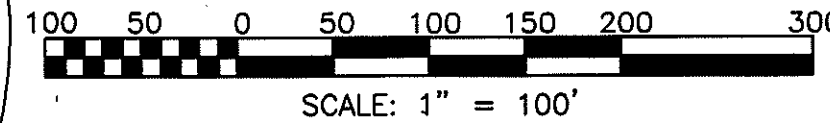
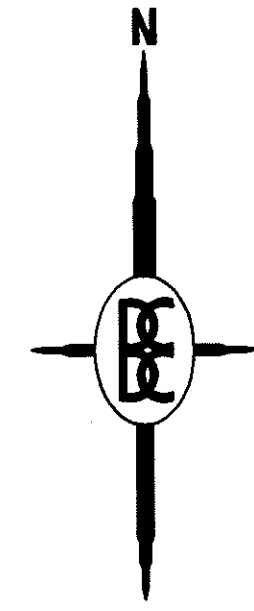
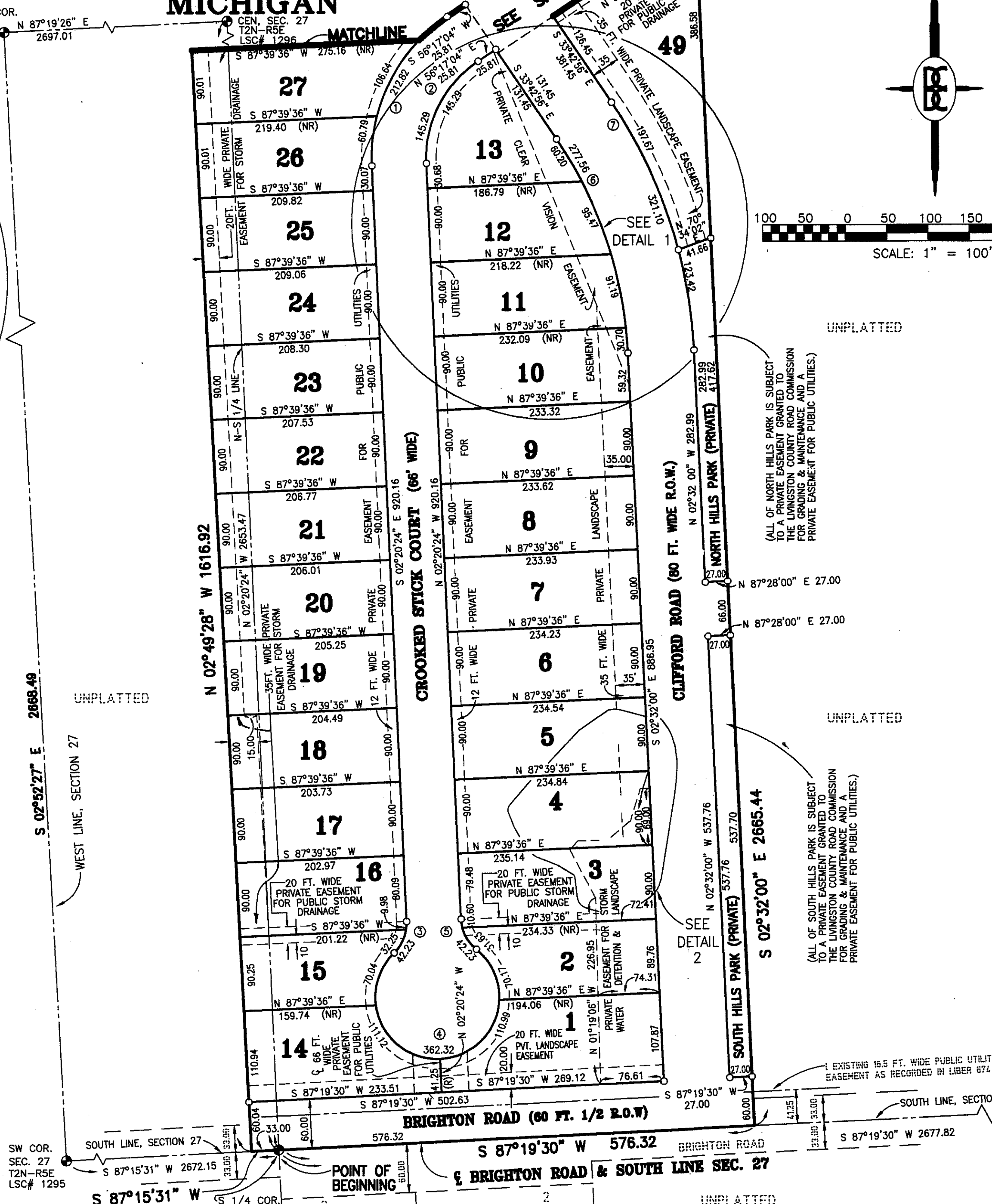


DETAIL 1
NO SCALE



DETAIL 2
NO SCALE

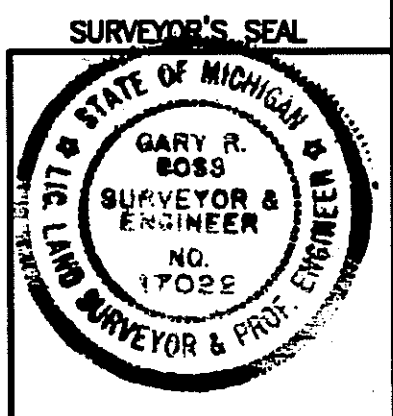
| CURVE DATA | | | | | |
|------------|--------|---------------|------------|--------------|-------------------|
| CURVE | RADIUS | CENTRAL ANGLE | ARC LENGTH | CHORD LENGTH | BEARING DIRECTION |
| 1 | 208.00 | 58°37'28" | 212.82 | 203.66 | S 26°58'20" W |
| 2 | 142.00 | 58°37'28" | 145.29 | 139.04 | S 26°58'20" W |
| 3 | 50.00 | 48°23'40" | 42.23 | 40.99 | N 21°51'26" E |
| 4 | 75.00 | 276°47'19" | 362.32 | 99.60 | N 87°39'36" E |
| 5 | 50.00 | 48°23'40" | 42.23 | 40.99 | S 26°32'14" E |
| 6 | 510.00 | 31°10'56" | 277.56 | 274.15 | N 18°07'28" W |
| 7 | 590.00 | 31°10'56" | 321.10 | 317.15 | N 18°07'28" W |



LOCATION MAP
SCALE: 1" = 2000'
T2N-R5E

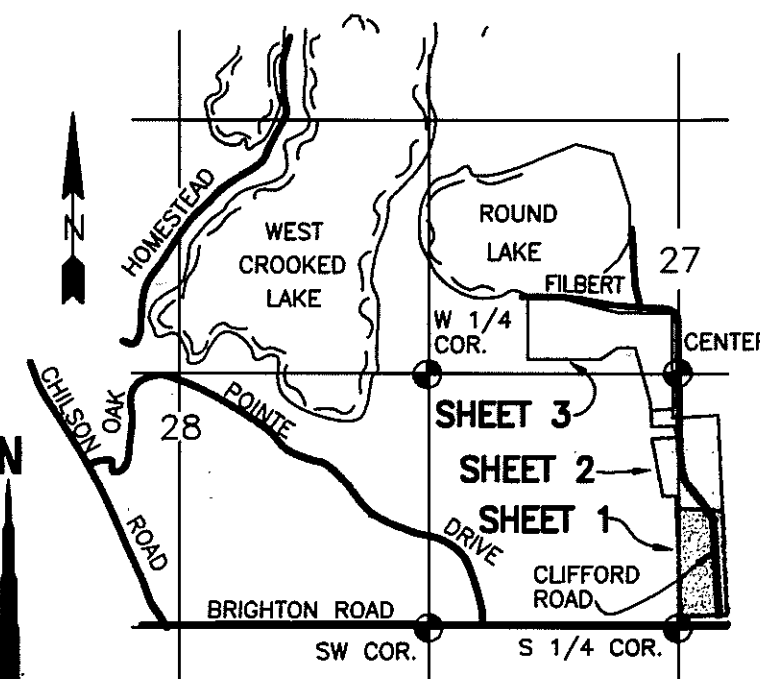
LEGEND:
ALL DIMENSIONS ARE SHOWN IN FEET.
ALL CURVILINEAR DIMENSIONS ARE SHOWN ALONG THE ARC.
THE SYMBOL "O" INDICATES A CONCRETE MONUMENT, WHICH IS 4" IN DIAMETER X 36" LONG, ENCASING A 1/2" STEEL ROD.
THE SYMBOL (R) DENOTES A RADIAL LOT LINE.
THE SYMBOL (NR) DENOTES A NON-RADIAL LOT LINE.
ALL LOT MARKERS ARE 1/2 INCH STEEL RODS AND ARE 18 INCHES IN LENGTH. (NOT CAPPED)
BEARINGS WERE ESTABLISHED FROM THE RECORDED PLAT OF "OAK POINTE HIGHLANDS NO. 2" A SUBDIVISION AS RECORDED IN LIBER 28 OF PLATS, PAGES 43-45, LIVINGSTON COUNTY RECORDS.
NO DIRECT ACCESS SHALL BE PERMITTED TO BRIGHTON ROAD FROM LOTS 1 & 14 OR TO CLIFFORD ROAD FROM LOTS 1-13.

PREPARED AND DRAFTED BY:
BOSS ENGINEERING COMPANY
3121 EAST GRAND RIVER
HOWELL, MICHIGAN 48843
Gary R. Boss
GARY R. BOSS



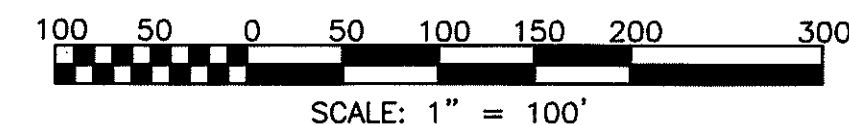
OAK POINTE HILLS

A PART OF THE NW 1/4, SE 1/4 & SW 1/4 OF SECTION 27, T2N-R5E, GENOA TOWNSHIP, LIVINGSTON COUNTY MICHIGAN



LOCATION MAP

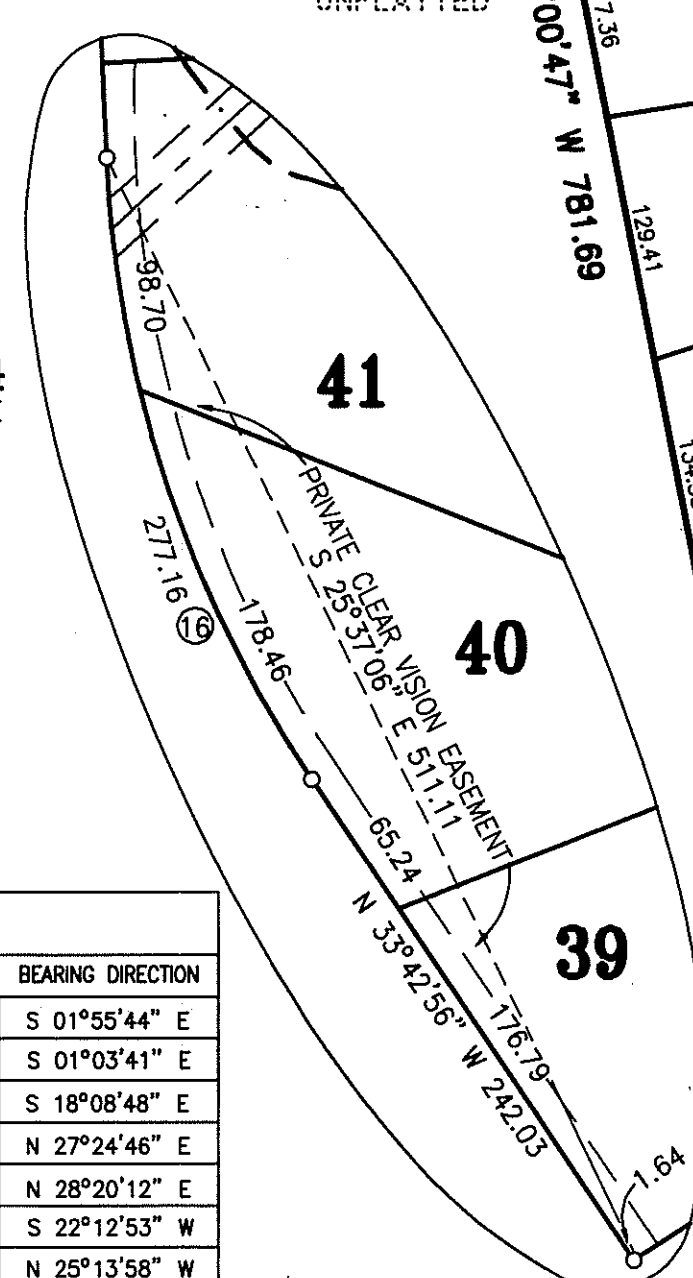
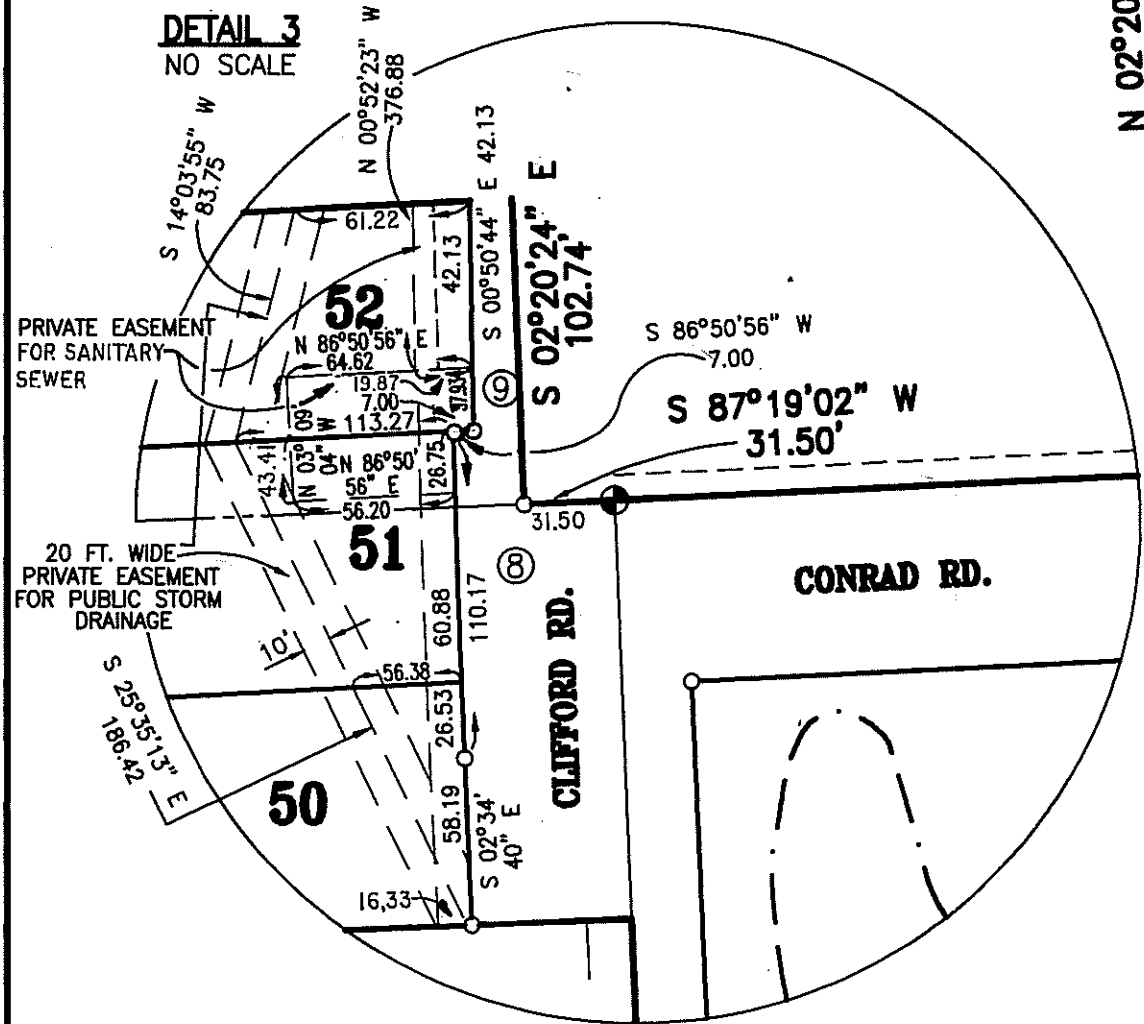
SCALE: 1" = 2000'
T2N-R5E



- LEGEND:**
- ALL DIMENSIONS ARE SHOWN IN FEET.
 - ALL CURVILINEAR DIMENSIONS ARE SHOWN ALONG THE ARC.
 - THE SYMBOL "O" INDICATES A CONCRETE MONUMENT, WHICH IS 4" IN DIAMETER X 36" LONG, ENCASING A 1/2" STEEL ROD.
 - THE SYMBOL (R) DENOTES A RADIAL LOT LINE.
 - THE SYMBOL (NR) DENOTES A NON-RADIAL LOT LINE.
 - ALL LOT MARKERS ARE 1/2 INCH STEEL RODS AND ARE 18 INCHES IN LENGTH. (NOT CAPPED)
 - BEARINGS WERE ESTABLISHED FROM THE RECORDED PLAT OF "OAK POINTE HIGHLANDS NO. 2" A SUBDIVISION AS RECORDED IN LIBER 28 OF PLATS, PAGES 43-45, LIVINGSTON COUNTY RECORDS.
 - ALL DIMENSIONS SHOWN IN *ITALICS* ARE FROM THE WETLANDS TO THE TRAVERSE OR LOT LINE.
 - NO DIRECT ACCESS SHALL BE PERMITTED TO CLIFFORD ROAD FROM LOTS 28, 39-41 AND 47.

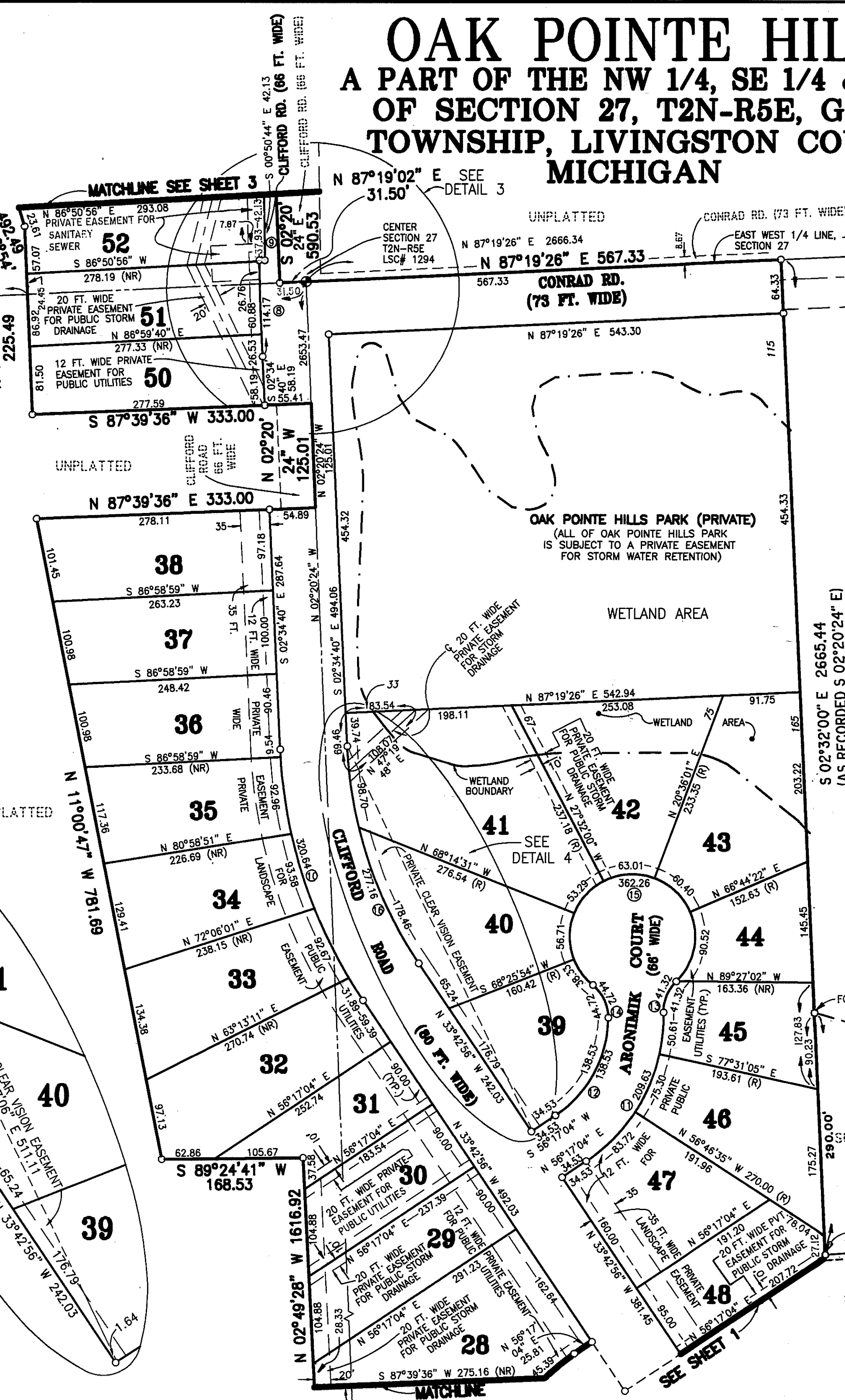
PREPARED AND DRAFTED BY:
BOSS ENGINEERING COMPANY
3121 EAST GRAND RIVER
HOWELL, MICHIGAN 48843

Gary R. Boss
GARY R. BOSS



NOTE:
ALL DRAIN EASEMENTS AND DETENTION AREAS ARE UNDER THE JURISDICTION OF THE LIVINGSTON COUNTY DRAIN COMMISSIONER. USE OF THE WORD "PRIVATE" DOES NOT LIMIT IN ANY WAY THE SCOPE OF THE EASEMENT GRANTED TO THE LIVINGSTON COUNTY DRAIN COMMISSIONER.

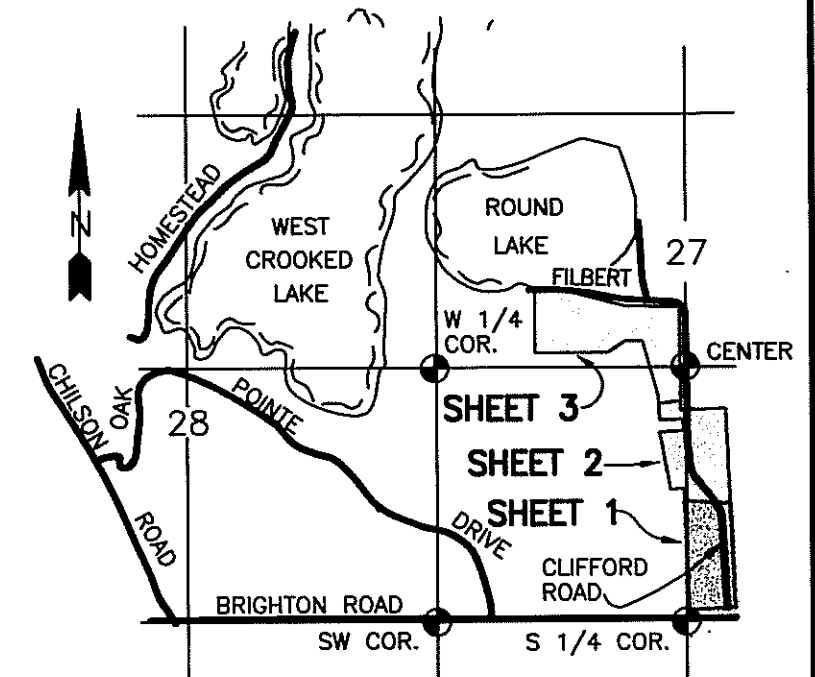
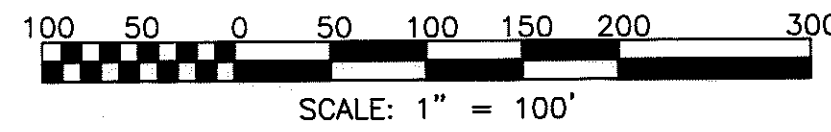
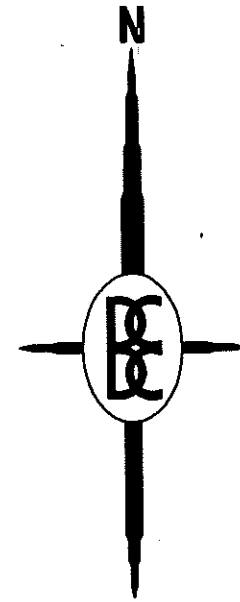
| CURVE DATA | | | | | |
|------------|---------|---------------|------------|--------------|-------------------|
| CURVE | RADIUS | CENTRAL ANGLE | ARC LENGTH | CHORD LENGTH | BEARING DIRECTION |
| 8 | 5040.00 | 01°17'52" | 114.17 | 114.17 | S 01°55'44" E |
| 9 | 5033.00 | 00°25'54" | 37.93 | 37.93 | S 01°03'41" E |
| 10 | 590.00 | 31°08'16" | 320.64 | 316.71 | S 18°08'48" E |
| 11 | 208.00 | 57°44'37" | 209.63 | 200.87 | N 27°24'46" E |
| 12 | 142.00 | 55°53'45" | 138.53 | 133.10 | N 28°20'12" E |
| 13 | 50.00 | 47°20'53" | 41.32 | 40.15 | S 22°12'53" W |
| 14 | 50.00 | 51°14'35" | 44.72 | 43.24 | N 25°13'58" W |
| 15 | 75.00 | 276°44'35" | 362.26 | 99.64 | S 87°31'02" W |
| 16 | 510.00 | 31°08'16" | 277.16 | 273.76 | S 18°08'48" E |



UNPLATTED
S 02°32'00" E 2665.44
(AS RECORDED S 02°20'24" E)

OAK POINTE HILLS

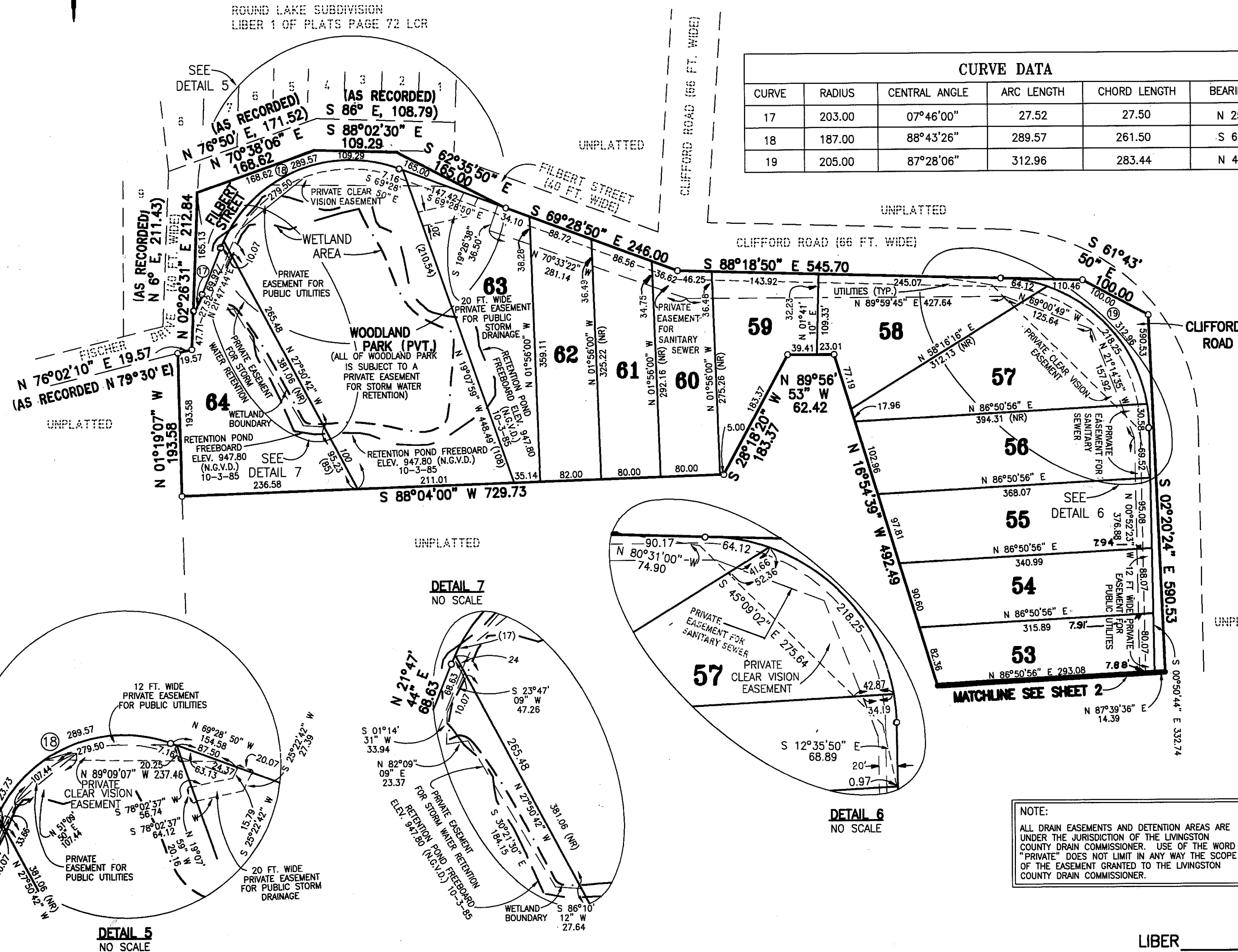
A PART OF THE NW 1/4, SE 1/4 & SW 1/4
OF SECTION 27, T2N-R5E, GENOA
TOWNSHIP, LIVINGSTON COUNTY
MICHIGAN



LOCATION MAP
SCALE: 1" = 2000'
T2N-R5E

ROUND LAKE SUBDIVISION
LIBER 1 OF PLATS PAGE 72 LCR

| CURVE DATA | | | | | |
|------------|--------|---------------|------------|--------------|-------------------|
| CURVE | RADIUS | CENTRAL ANGLE | ARC LENGTH | CHORD LENGTH | BEARING DIRECTION |
| 17 | 203.00 | 07°46'00" | 27.52 | 27.50 | N 25°40'44" E |
| 18 | 187.00 | 88°43'26" | 289.57 | 261.50 | S 66°09'27" W |
| 19 | 205.00 | 87°28'06" | 312.96 | 283.44 | N 44°34'47" W |



LEGEND:

ALL DIMENSIONS ARE SHOWN IN FEET.

ALL CURVILINEAR DIMENSIONS ARE SHOWN ALONG THE ARC.

THE SYMBOL "O" INDICATES A CONCRETE MONUMENT, WHICH IS 4" IN DIAMETER X 36" LONG, ENCASING A 1/2" STEEL ROD.

THE SYMBOL (R) DENOTES A RADIAL LOT LINE.

THE SYMBOL (NR) DENOTES A NON-RADIAL LOT LINE.

ALL LOT MARKERS ARE 1/2 INCH STEEL RODS AND ARE 18 INCHES IN LENGTH. (NOT CAPPED)

BEARINGS WERE ESTABLISHED FROM THE RECORDED PLAT OF "OAK POINTE HIGHLANDS NO. 2" A SUBDIVISION AS RECORDED IN LIBER 28 OF PLATS, PAGES 43-45, LIVINGSTON COUNTY RECORDS.

ALL DIMENSIONS SHOWN IN *ITALICS (100)* ARE FROM THE WETLANDS TO THE TRAVERSE OR LOT LINE.

ALL DIMENSIONS SHOWN IN PARENTHESIS (100) ARE FROM RETENTION POND FREEBOARD TO LOT LINE.

PREPARED AND DRAFTED BY:
BOSS ENGINEERING COMPANY
3121 EAST GRAND RIVER
HOWELL, MICHIGAN 48843

Gary R. Boss
GARY R. BOSS

NOTE:
ALL DRAIN EASEMENTS AND DETENTION AREAS ARE UNDER THE JURISDICTION OF THE LIVINGSTON COUNTY DRAIN COMMISSIONER. USE OF THE WORD "PRIVATE" DOES NOT LIMIT IN ANY WAY THE SCOPE OF THE EASEMENT GRANTED TO THE LIVINGSTON COUNTY DRAIN COMMISSIONER.

