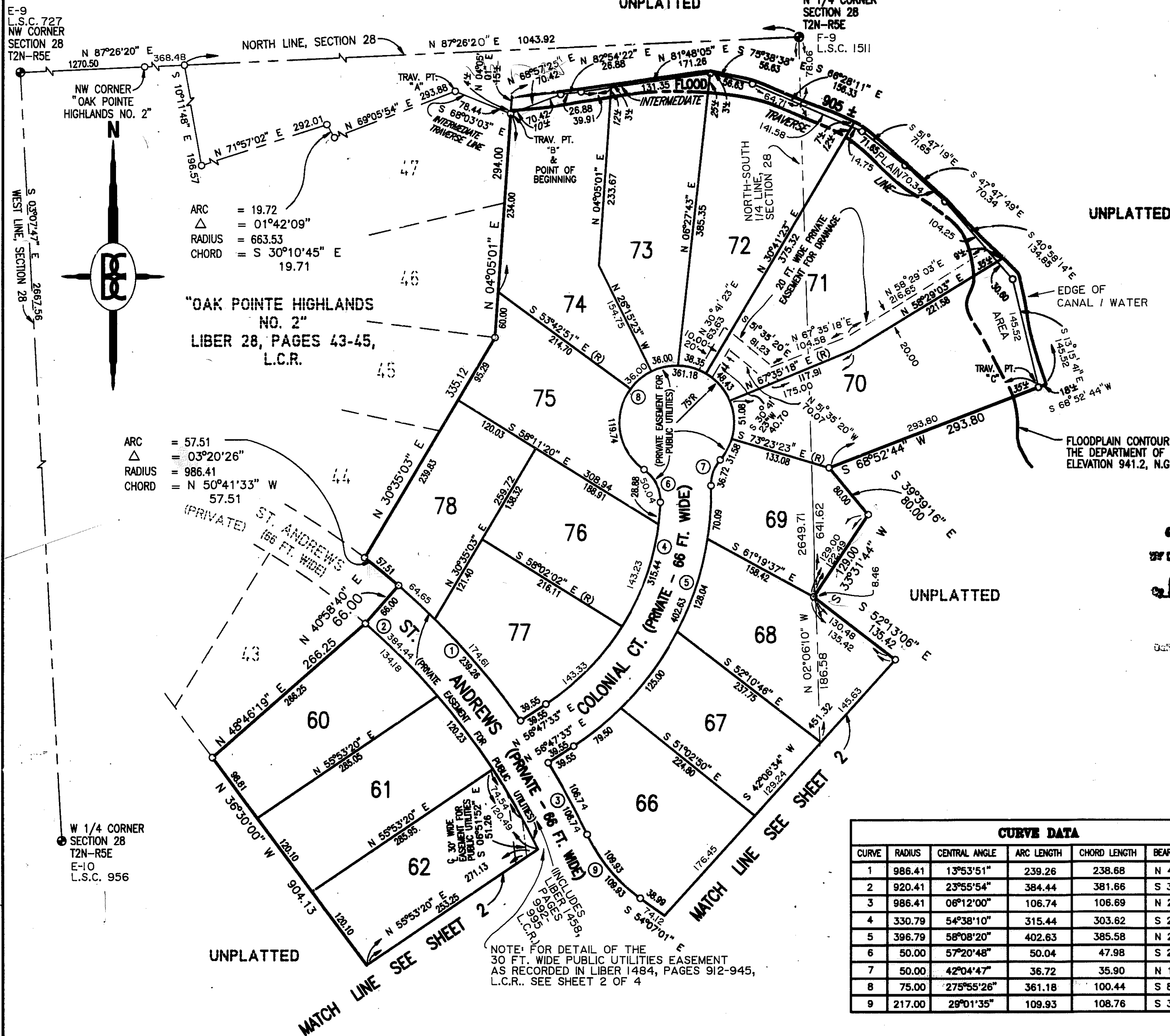
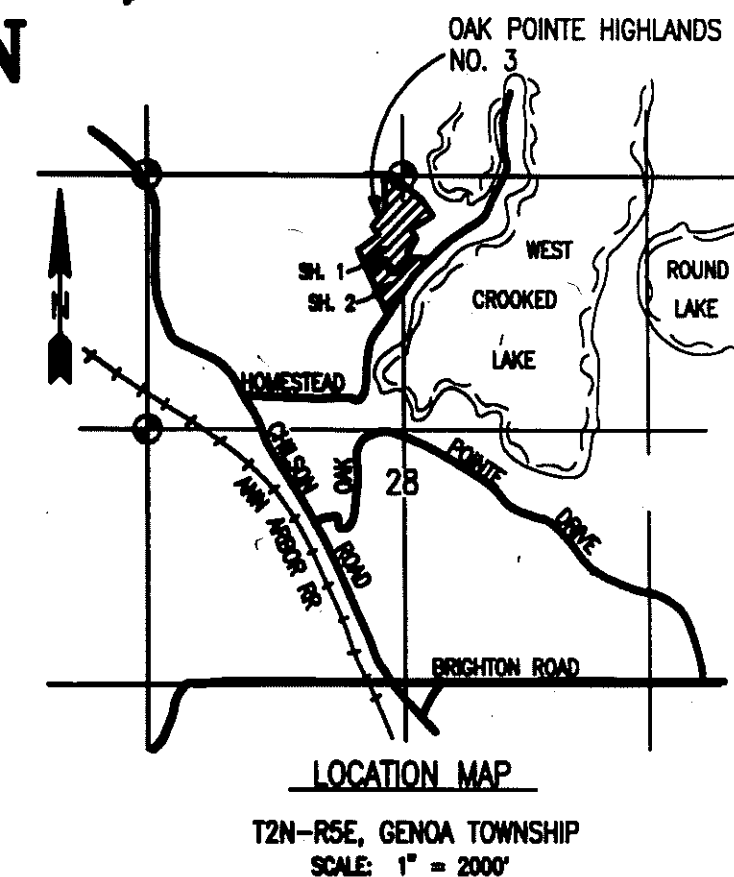
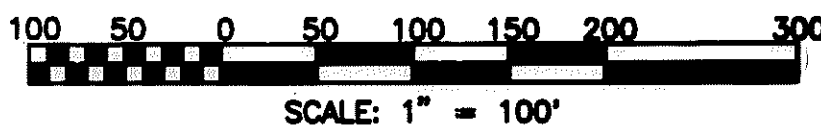


OAK POINTE HIGHLANDS NO. 3

A SUBDIVISION OF PART OF THE NW 1/4 & NE 1/4 OF SECTION 28, T2N-R5E, GENOA TOWNSHIP, LIVINGSTON COUNTY, MICHIGAN

This plat is subject to restrictions required by Act 288 of 1967, as amended on certain lots with respect to the requirements of the Michigan Department of Natural Resources and/or the Michigan Department of Public Health, which are recorded in Liber 1522, pages 122-128 of records of this County.



ARC = 19.72
 Δ = 01°42'09"
 RADIUS = 663.53
 CHORD = S 30°10'45" E 19.71

"OAK POINTE HIGHLANDS NO. 2"
 LIBER 28, PAGES 43-45,
 L.C.R.

ARC = 57.51
 Δ = 03°20'26"
 RADIUS = 986.41
 CHORD = N 50°41'33" W 57.51

FLOODPLAIN CONTOUR AS ESTABLISHED BY THE DEPARTMENT OF NATURAL RESOURCES, ELEVATION 941.2, N.G.V. DATUM

CERTIFIED TRUE COPY OF RECORDED PLAT BY DEPARTMENT OF COMMERCE

Richard E. Lomas, L.L.M.
 Richard E. Lomas, L.L.M.
 Manager, Plat Section

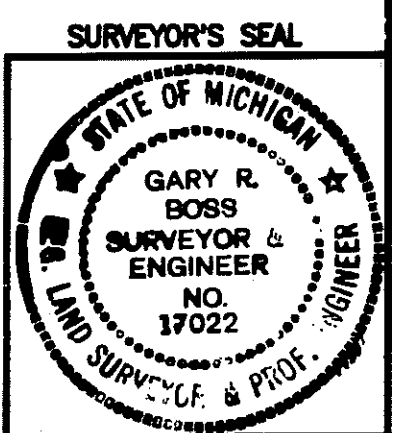
DATE February 25, 1992

LEGEND:
 All dimensions are shown in feet.
 All curvilinear dimensions are shown along the arc.
 The symbol "o" indicates a concrete monument, which is 4" in diameter x 36" long, encasing a 1/2" iron rod.
 The symbol (R) denotes a radial lot line.
 All lot markers are 1/2 inch iron rods and are 18 inches in length. (not capped)
 Bearings were established from the recorded Plat of "Oak Pointe Highlands No. 2" a subdivision as recorded in Liber 28 of Plats, pages 43-45, Livingston County Records.

PREPARED AND DRAFTED BY:
 Boss Engineering Company
 3121 East Grand River
 Howell, Michigan 48843

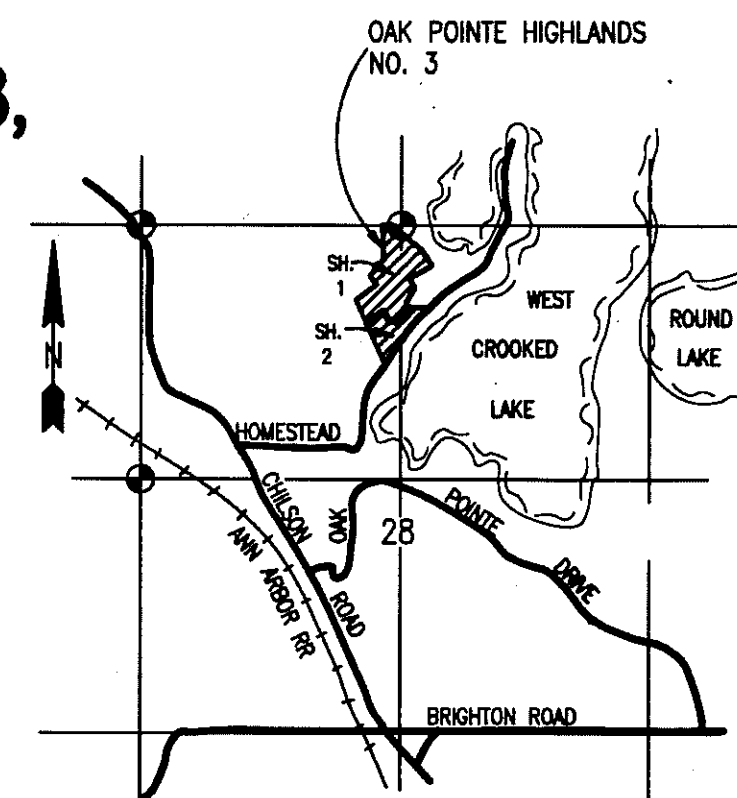
Gary R. Boss
 Gary R. Boss

CURVE DATA					
CURVE	RADIUS	CENTRAL ANGLE	ARC LENGTH	CHORD LENGTH	BEARING DIRECTION
1	986.41	13°53'51"	239.26	238.68	N 42°04'25" W
2	920.41	23°55'54"	384.44	381.66	S 37°03'23" E
3	986.41	06°12'00"	106.74	106.69	N 28°11'26" W
4	330.79	54°38'10"	315.44	303.62	S 29°28'28" W
5	396.79	58°08'20"	402.63	385.58	N 27°43'23" E
6	50.00	57°20'48"	50.04	47.98	S 26°31'02" E
7	50.00	42°04'47"	36.72	35.90	N 19°41'37" E
8	75.00	27°55'26"	361.18	100.44	S 82°46'17" W
9	217.00	29°01'35"	109.93	108.76	S 39°36'13" E

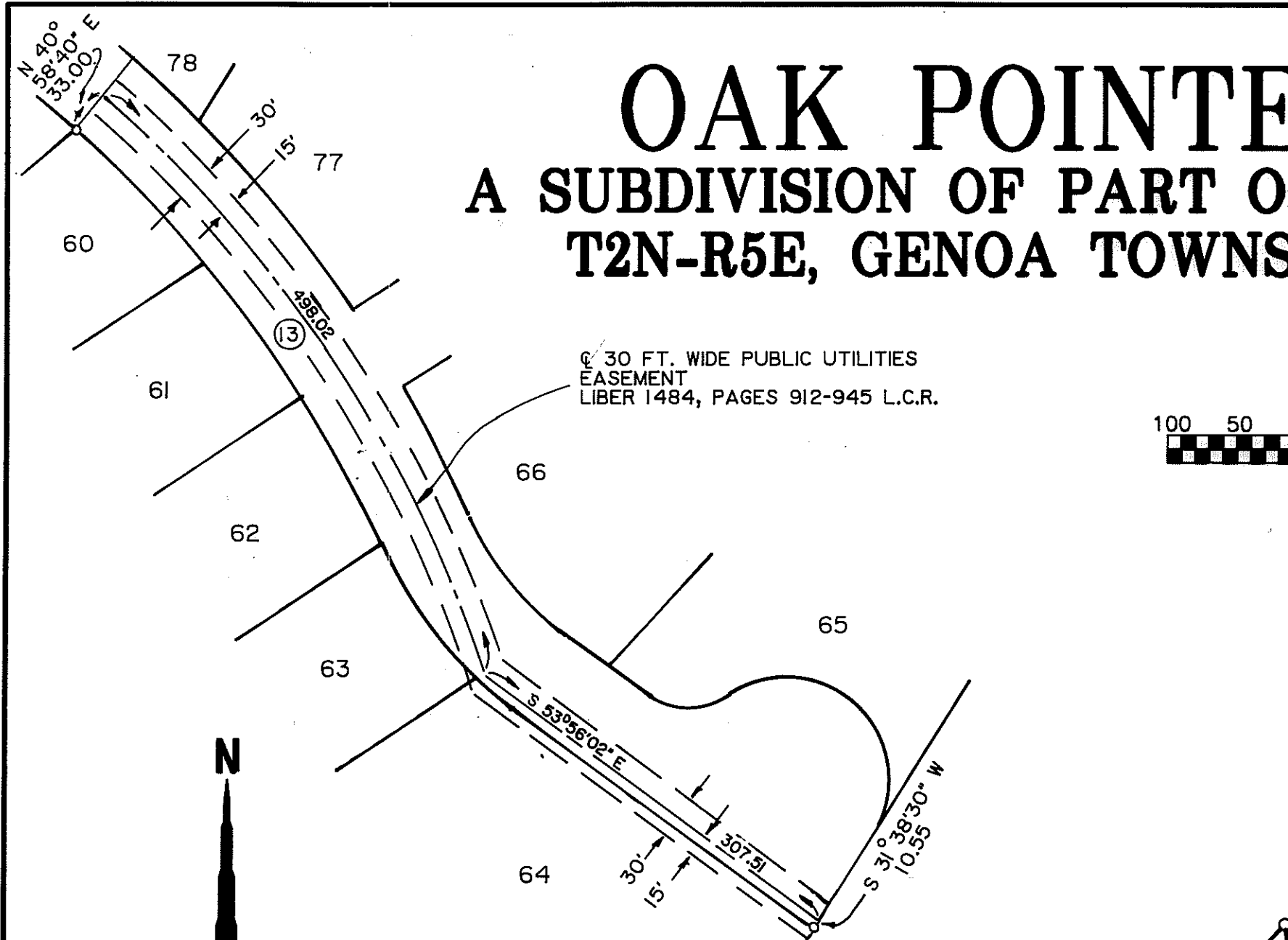
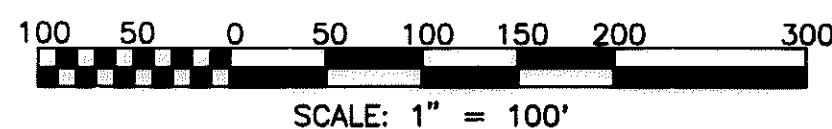


OAK POINTE HIGHLANDS NO. 3

A SUBDIVISION OF PART OF THE NW 1/4 & NE 1/4 OF SECTION 28, T2N-R5E, GENOA TOWNSHIP, LIVINGSTON COUNTY, MICHIGAN



LOCATION MAP
T2N-R5E, GENOA TOWNSHIP
SCALE: 1" = 2000'



DETAIL
SCALE: 1" = 100'

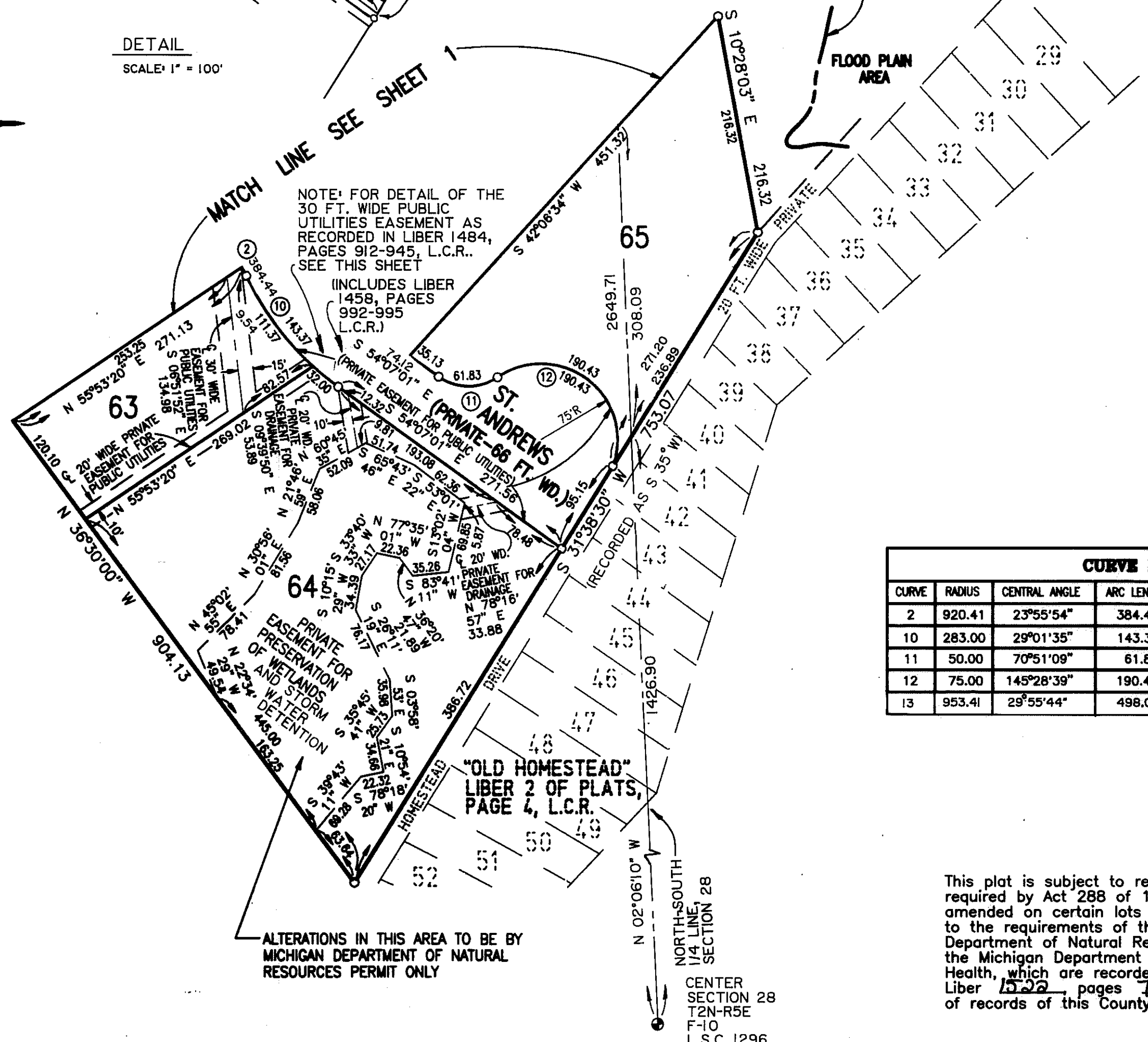
UNPLATTED

FLOODPLAIN CONTOUR AS ESTABLISHED BY THE DEPARTMENT OF NATURAL RESOURCES, ELEVATION 941.2, N.G.V. DATUM

FLOOD PLAIN AREA

MATCH LINE SEE SHEET 1

NOTE: FOR DETAIL OF THE 30 FT. WIDE PUBLIC UTILITIES EASEMENT AS RECORDED IN LIBER 1484, PAGES 912-945, L.C.R. SEE THIS SHEET (INCLUDES LIBER 1458, PAGES 992-995 L.C.R.)



UNPLATTED

ALTERATIONS IN THIS AREA TO BE BY MICHIGAN DEPARTMENT OF NATURAL RESOURCES PERMIT ONLY

CENTER SECTION 28 T2N-R5E F-10 L.S.C. 1296

CURVE DATA					
CURVE	RADIUS	CENTRAL ANGLE	ARC LENGTH	CHORD LENGTH	BEARING DIRECTION
2	920.41	23°55'54"	384.44	381.66	S 37°03'23" E
10	283.00	29°01'35"	143.37	141.84	S 39°36'13" E
11	50.00	70°51'09"	61.83	57.97	S 89°32'36" E
12	75.00	145°28'39"	190.43	143.24	S 52°13'50" E
13	953.41	29°55'44"	498.02	492.38	S 34°03'28" E

This plat is subject to restrictions required by Act 288 of 1967, as amended on certain lots with respect to the requirements of the Michigan Department of Natural Resources and/or the Michigan Department of Public Health, which are recorded in Liber 1522, pages 122-128 of records of this County.

LEGEND:

- All dimensions are shown in feet.
- All curvilinear dimensions are shown along the arc.
- The symbol "o" indicates a concrete monument, which is 4" in diameter x 36" long, enclosing a 1/2" iron rod.
- The symbol (R) denotes a radial lot line.
- All lot markers are 1/2 inch iron rods and are 18 inches in length. (not capped)
- Bearings were established from the recorded Plat of "Oak Pointe Highlands No. 2" a subdivision as recorded in Liber 28 of Plats, pages 43-45, Livingston County Records.

PREPARED AND DRAFTED BY:

Boss Engineering Company
3121 East Grand River
Howell, Michigan 48843

Gary R. Boss
Gary R. Boss

