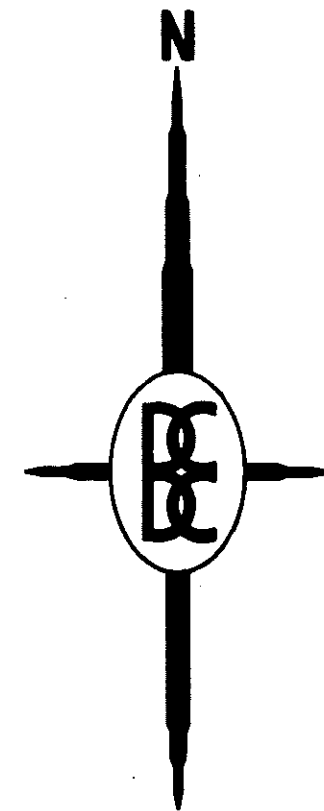
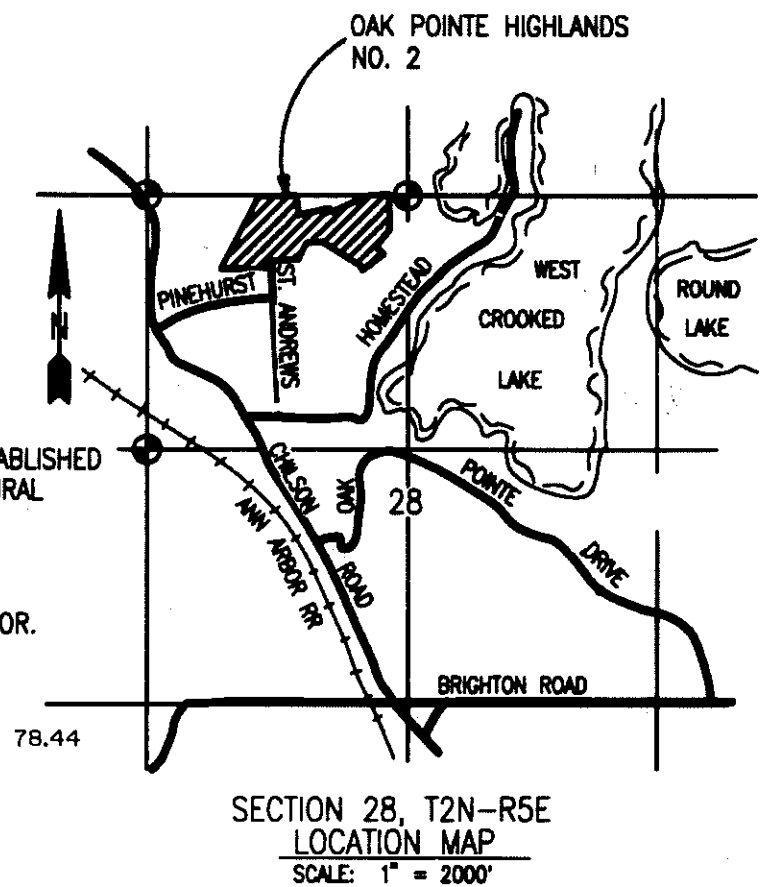
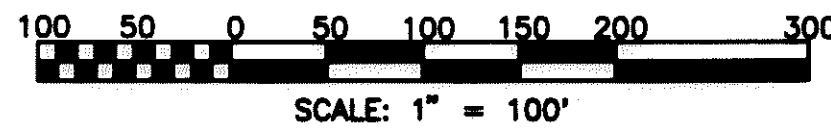


OAK POINTE HIGHLANDS NO. 2

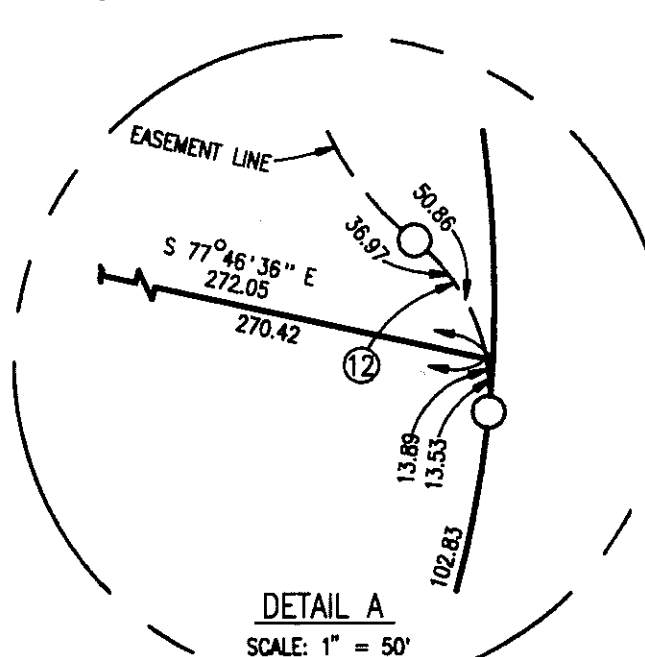
A SUBDIVISION OF PART OF THE NW 1/4 OF SECTION 28,
T2N-R5E, GENOA TOWNSHIP, LIVINGSTON COUNTY, MICHIGAN



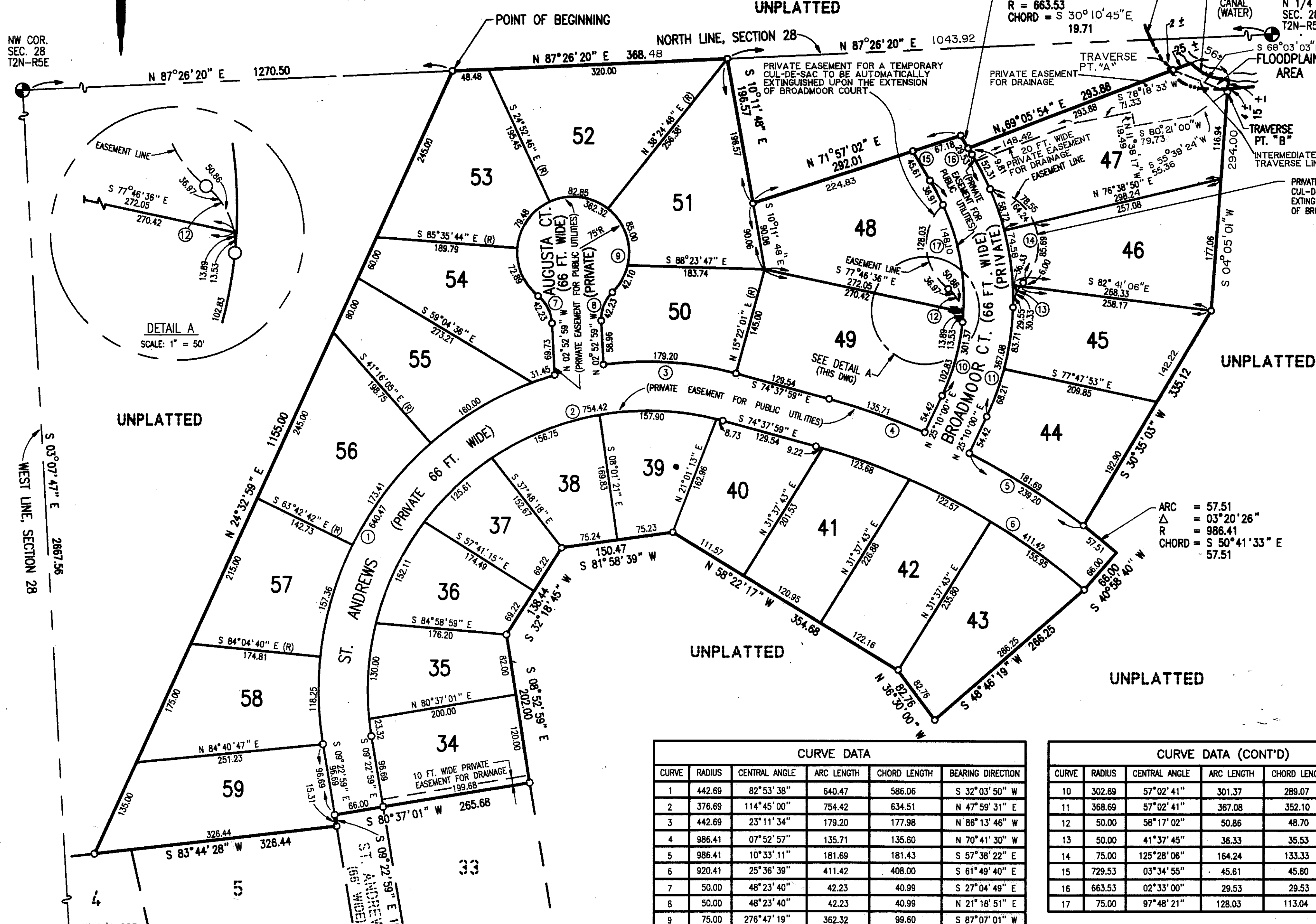
This plat is subject to restrictions required by Act 288 of 1967, as amended on certain lots with respect to the requirements of the Michigan Department of Natural Resources and/or the Michigan Department of Public Health, which are recorded in Liber 143, pages 421-456 of records of this County.



NW COR. SEC. 28 T2N-R5E



DETAIL A
SCALE: 1" = 50'



LEGEND:

All dimensions are shown in feet.

All curvilinear dimensions are shown along the arc.

The symbol "o" indicates a concrete monument, which is 4" in diameter x 36" long, encasing a 1/2" iron rod x 36" long.

The symbol (R) denotes a radial lot line.

All lot markers are 1/2 inch iron rods and are 18 inches in length. (not capped)

Bearings were established from the recorded Plat of "Oak Pointe Highlands" a subdivision as recorded in Liber 27 of Plats, pages 7-10, Livingston County Records.

PREPARED AND DRAFTED BY:

Boss Engineering Company
3121 East Grand River
Howell, Michigan 48843

Gary R. Boss
Gary R. Boss

CURVE DATA

CURVE	RADIUS	CENTRAL ANGLE	ARC LENGTH	CHORD LENGTH	BEARING DIRECTION
1	442.69	82°53'38"	640.47	586.06	S 32°03'50" W
2	376.69	114°45'00"	754.42	634.51	N 47°59'31" E
3	442.69	23°11'34"	179.20	177.98	N 86°13'46" W
4	986.41	07°52'57"	135.71	135.60	N 70°41'30" W
5	986.41	10°33'11"	181.69	181.43	S 57°38'22" E
6	920.41	25°36'39"	411.42	408.00	S 61°49'40" E
7	50.00	48°23'40"	42.23	40.99	S 27°04'49" E
8	50.00	48°23'40"	42.23	40.99	N 21°18'51" E
9	75.00	276°47'19"	362.32	99.60	S 87°07'01" W

CURVE DATA (CONT'D)

CURVE	RADIUS	CENTRAL ANGLE	ARC LENGTH	CHORD LENGTH	BEARING DIRECTION
10	302.69	57°02'41"	301.37	289.07	N 03°21'20" W
11	368.69	57°02'41"	367.08	352.10	N 03°21'20" W
12	50.00	58°17'02"	50.86	48.70	S 23°26'20" E
13	50.00	41°37'45"	36.33	35.53	N 22°22'20" E
14	75.00	125°28'06"	164.24	133.33	N 19°32'51" W
15	729.53	03°34'55"	45.61	45.60	S 30°03'13" E
16	663.53	02°33'00"	29.53	29.53	N 30°36'11" W
17	75.00	97°48'21"	128.03	113.04	N 03°40'41" W

"OAK POINTE HIGHLANDS" LIBER 27 OF PLATS,
PAGES 7-10 L.C.R.

LIBER _____ PAGE _____

SURVEYOR'S SEAL

