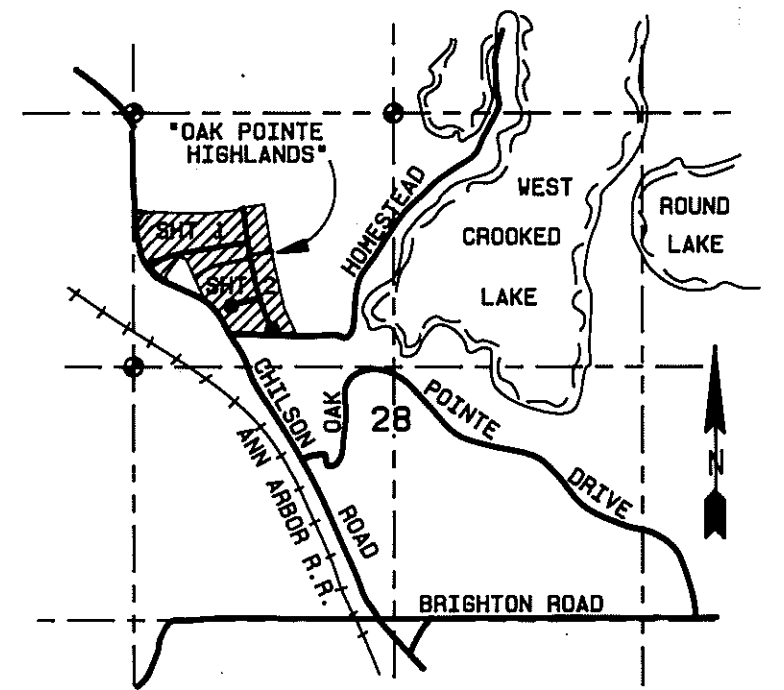
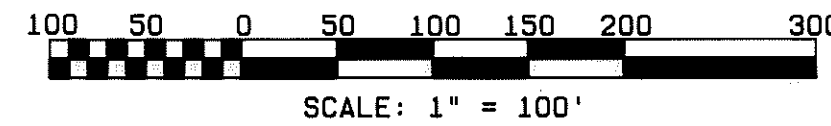


OAK POINTE HIGHLANDS

A SUBDIVISION OF PART OF THE NW 1/4 OF SECTION 28,
T2N-R5E, GENOA TOWNSHIP, LIVINGSTON COUNTY, MICHIGAN

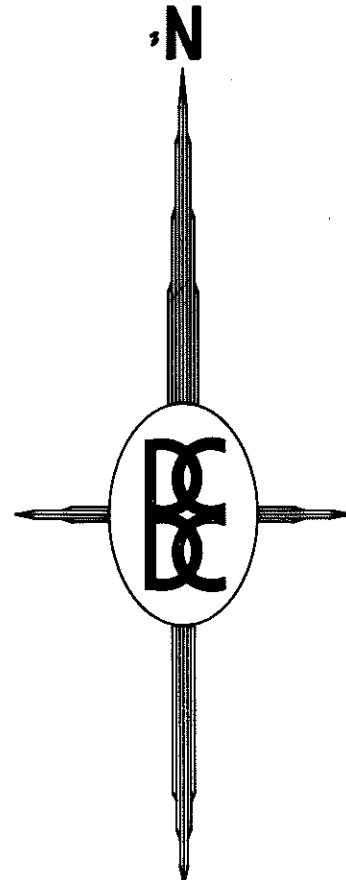
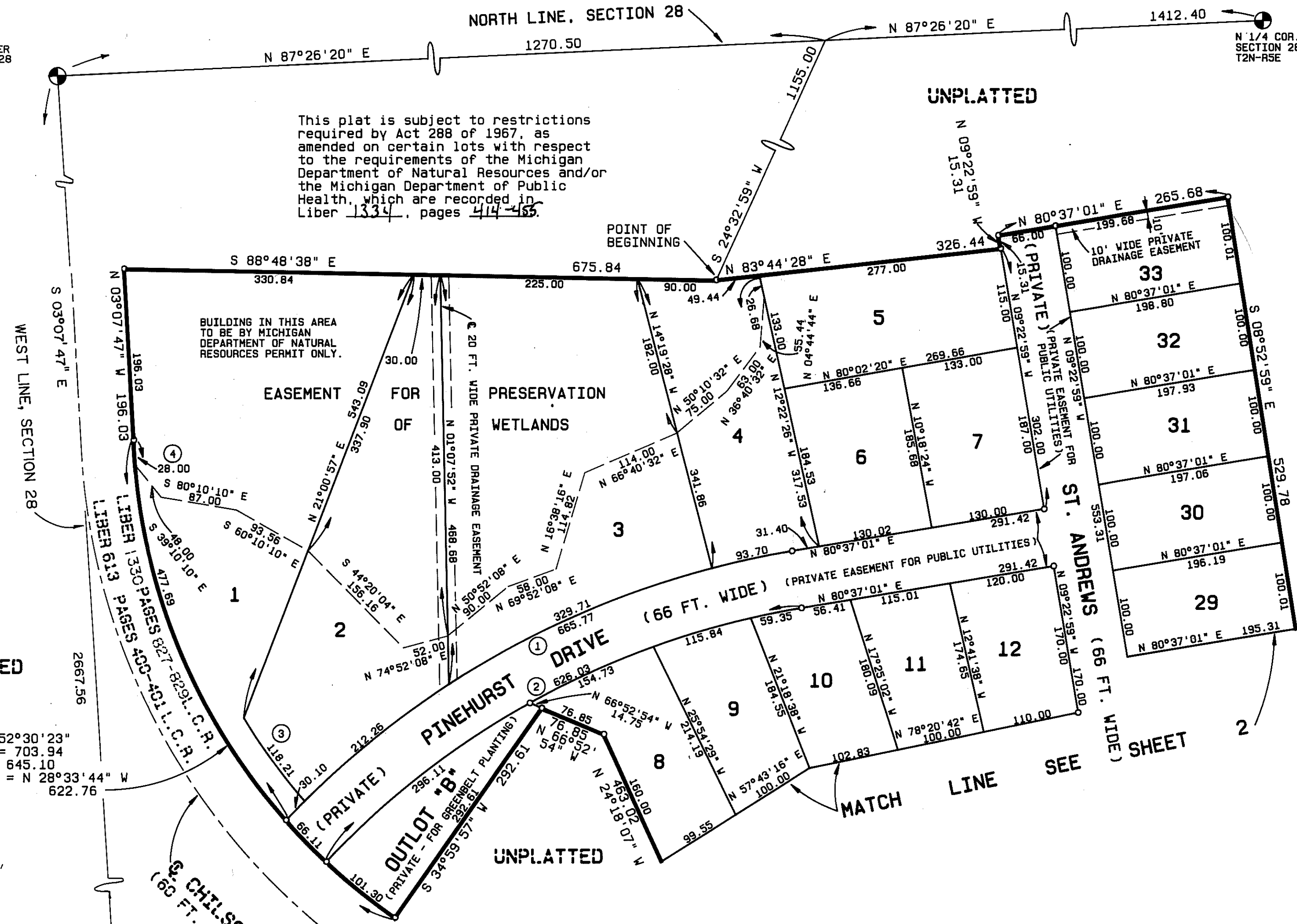


LOCATION MAP
SCALE: 1" = 2000'

NW CORNER SECTION 28 T2N-R5E

N 1/4 COR. SECTION 28 T2N-R5E

This plat is subject to restrictions required by Act 288 of 1967, as amended on certain lots with respect to the requirements of the Michigan Department of Natural Resources and/or the Michigan Department of Public Health, which are recorded in Liber 1334, pages 414-465.



UNPLATTED

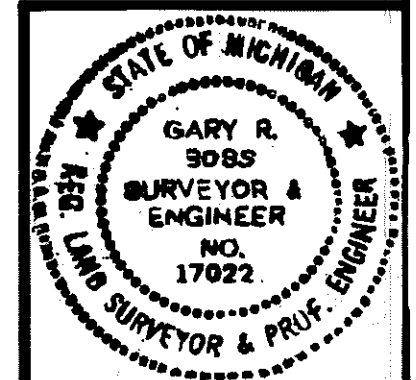
LEGEND:
All dimensions are shown in feet.
All curvilinear dimensions are shown along the arc.
The symbol "o" indicates a concrete monument, which is 4" in diameter x 36" long, encasing a 1/2" iron rod.
The symbol (R) denotes a radial lot line.
All lot markers are 1/2 inch iron rods and are 18 inches in length. (not capped)
Bearings were established from the recorded Plat of "Oak Pointe North No. 3", Liber 26 of Plats, page 1-3, Livingston County Records.

PREPARED AND DRAFTED BY:

Boss Engineering Company
3121 East Grand River
Howell, Michigan 48843

Gary R. Boss
Gary R. Boss

SURVEYOR'S SEAL



CURVE DATA

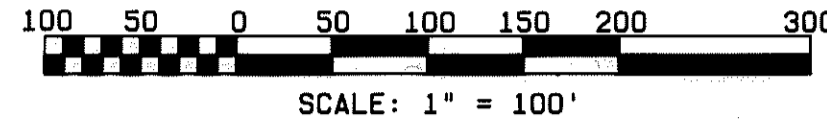
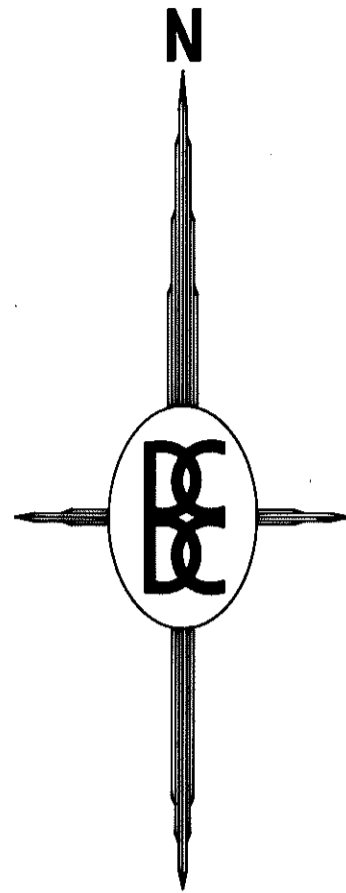
NO.	RADIUS	DELTA	ARC	CHORD	BEARING
1	1024.72	37°13'31"	665.77	654.12	N 62°00'15" E
2	958.72	37°24'48"	626.03	614.97	N 61°54'37" E
3	673.94	10°03'00"	118.21	118.06	N 35°57'38" W
4	703.94	02°16'44"	28.00	28.00	N 03°26'55" W

△ = 52°30'23"
RAD. = 703.94
ARC = 645.10
CHORD = N 28°33'44" W
622.76

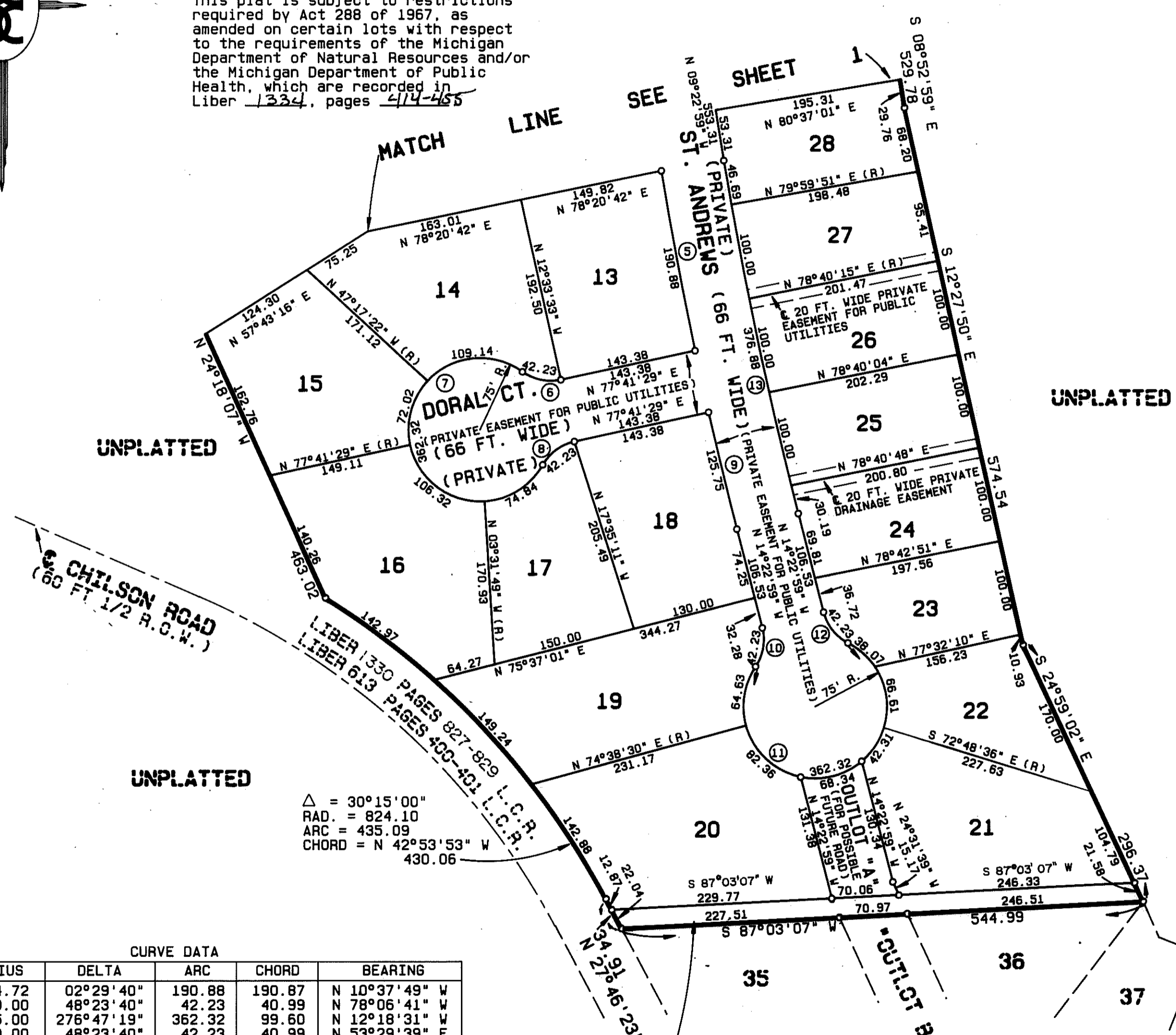
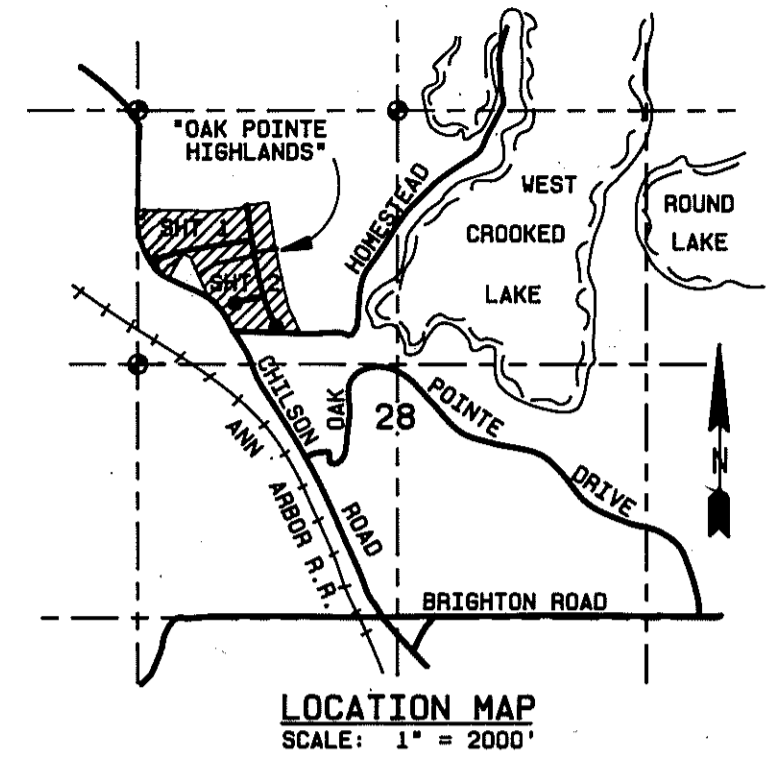
W 1/4 CORNER SECTION 28 T2N-R5E

OAK POINTE HIGHLANDS

A SUBDIVISION OF PART OF THE NW 1/4 OF SECTION 28,
T2N-R5E, GENOA TOWNSHIP, LIVINGSTON COUNTY, MICHIGAN



This plat is subject to restrictions required by Act 288 of 1967, as amended on certain lots with respect to the requirements of the Michigan Department of Natural Resources and/or the Michigan Department of Public Health, which are recorded in Liber 1334, pages 414-465



UNPLATTED

UNPLATTED

UNPLATTED

Δ = 30°15'00"
RAD. = 824.10
ARC = 435.09
CHORD = N 42°53'53" W
430.06

CURVE DATA

NO.	RADIUS	DELTA	ARC	CHORD	BEARING
5	4384.72	02°29'40"	190.88	190.87	N 10°37'49" W
6	50.00	48°23'40"	42.23	40.99	N 78°06'41" W
7	75.00	276°47'19"	362.32	99.60	N 12°18'31" W
8	50.00	48°23'40"	42.23	40.99	N 53°29'39" W
9	4384.72	01°38'36"	125.75	125.75	N 13°33'41" W
10	50.00	48°23'40"	42.23	40.99	N 09°48'51" E
11	75.00	276°47'19"	362.32	99.60	N 75°37'01" E
12	50.00	48°23'40"	42.23	40.99	N 38°34'49" W
13	4318.72	05°00'00"	376.88	376.76	N 11°52'59" W

OUTLOT "C"
(FOR FUTURE DEVELOPMENT AND SUBJECT TO INGRESS AND EGRESS EASEMENTS OF RECORD)

LEGEND:
All dimensions are shown in feet.
All curvilinear dimensions are shown along the arc.
The symbol "o" indicates a concrete monument, which is 4" in diameter x 36" long, encasing a 1/2" iron rod.
The symbol (R) denotes a radial lot line.
All lot markers are 1/2 inch iron rods and are 18 inches in length. (not capped)
Bearings were established from the recorded Plat of "Oak Pointe North No. 3", Liber 26 of Plats, page 1-3, Livingston County Records.

PREPARED AND DRAFTED BY:

Boss Engineering Company
3121 East Grand River
Howell, Michigan 48843

Gary R. Boss
Gary R. Boss

