

Examined and Approved  
Aug 24-1920  
[Signature]

# ODELL'S SUBDIVISION ON CROOKED LAKE

GENOA TOWNSHIP LIVINGSTON COUNTY MICH.

### Dedication

KNOW ALL MEN BY THESE PRESENTS, That I Matilde Odell, as proprietor, have caused the land embraced in the annexed plat to be surveyed, laid out and platted to be known as "Odell's Subdivision, Crooked Lake, Genoa Township, Livingston County Mich, and that the street and walk as shown on said plat are hereby dedicated to the use of the public.

Signed and Sealed in Presence of  
[Signature] Matilde Odell LS.  
[Signature]

STATE of MICHIGAN } ss  
County of Livingston } On this 13 day of July 1920  
before me a Notary Public and for said county personally came the above named Matilde Odell, known to me to be the person who executed the above dedication, and acknowledged the same to be her free act and deed

My commission expires July 24 1922 Notary Public, Livingston Co. Mich.

### Description of Land Platted

Beginning at a point in the south line of the NW 1/4 of SW 1/4 of Sec 22 and 397 feet East of the SW corner thereof, thence N6°15'W 286.5 Ft.; N36°15'W 201.5 Ft.; N53°45'E 100 Ft.; N27°30'W 174.5 Ft.; N0°19'E 195 Ft.; East 10 Ft.; S36°15'E 590 Ft.; S6°15'E 395 Ft. to 1/2 line, thence N89°W 256.8 Ft. to beginning. All on the NW 1/4 of the SW 1/4 of Sec 22. Surveyed June 1920 by G.H. Dunning Reg. Civ. Engr.

### Co. Treasurers Certificate

Office of County Treasurer, Livingston Co. July 22 1920.  
I hereby certify that there are no tax liens or titles held by the State on the lands described above, and that there are no tax liens or titles held by individuals on said lands for the five years preceding the 22nd day of July 1920, and that the taxes for said period of five years are paid, as shown by the records of this office.  
Harry A. Shinn  
County Treasurer.

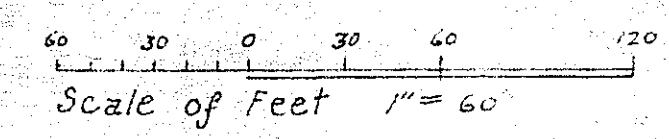
### Surveyors Certificate

I hereby certify that the plat hereon delineated is a correct one and that permanent monuments consisting of 1" by 18" gas pipe, have been planted at points marked ths. o as thereon shown at all angles in the boundaries of the land platted, and at all angles in, and intersections of Street and walk.  
G.H. Dunning Registered Civil Engineer

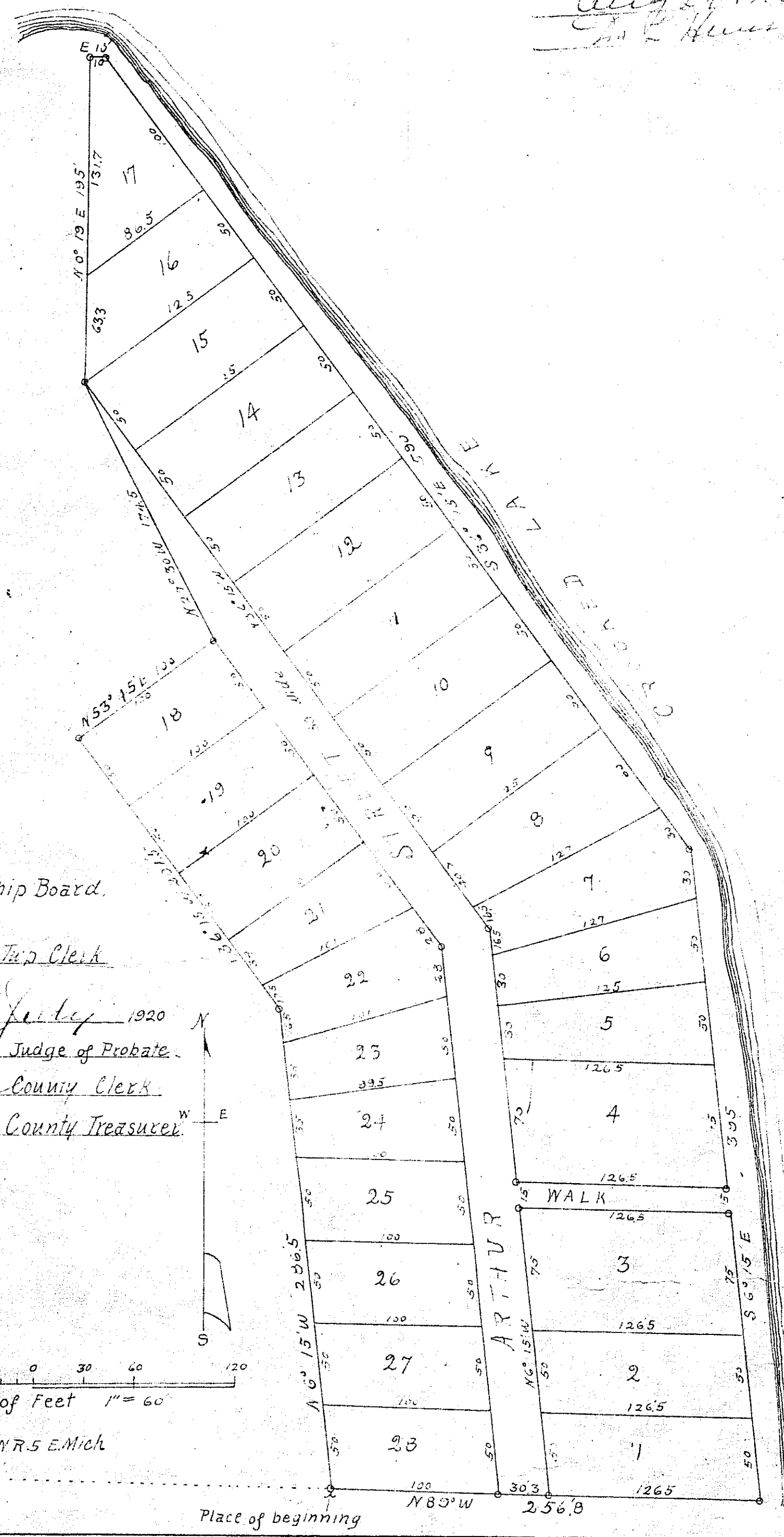
This plat was approved by the Genoa Township Board, at a meeting held July 13 1920.  
[Signature] Township Clerk

This plat was approved on the 23rd day of July 1920  
Clyde W. Street Judge of Probate.  
[Signature] County Clerk  
Harry A. Shinn County Treasurer.

Received for record the 26th day of Aug A. D. 1920 at 9 o'clock A. M. and recorded in book One of Plats on Page 59  
G. J. [Signature] Register



SW. cor. NW 1/4 of SW 1/4 Sec. 22 T 2 N R 5 E Mich  
6 Stone 397'



Validated by Order of Circuit Court July 10th 1926  
[Signature]

54

57