

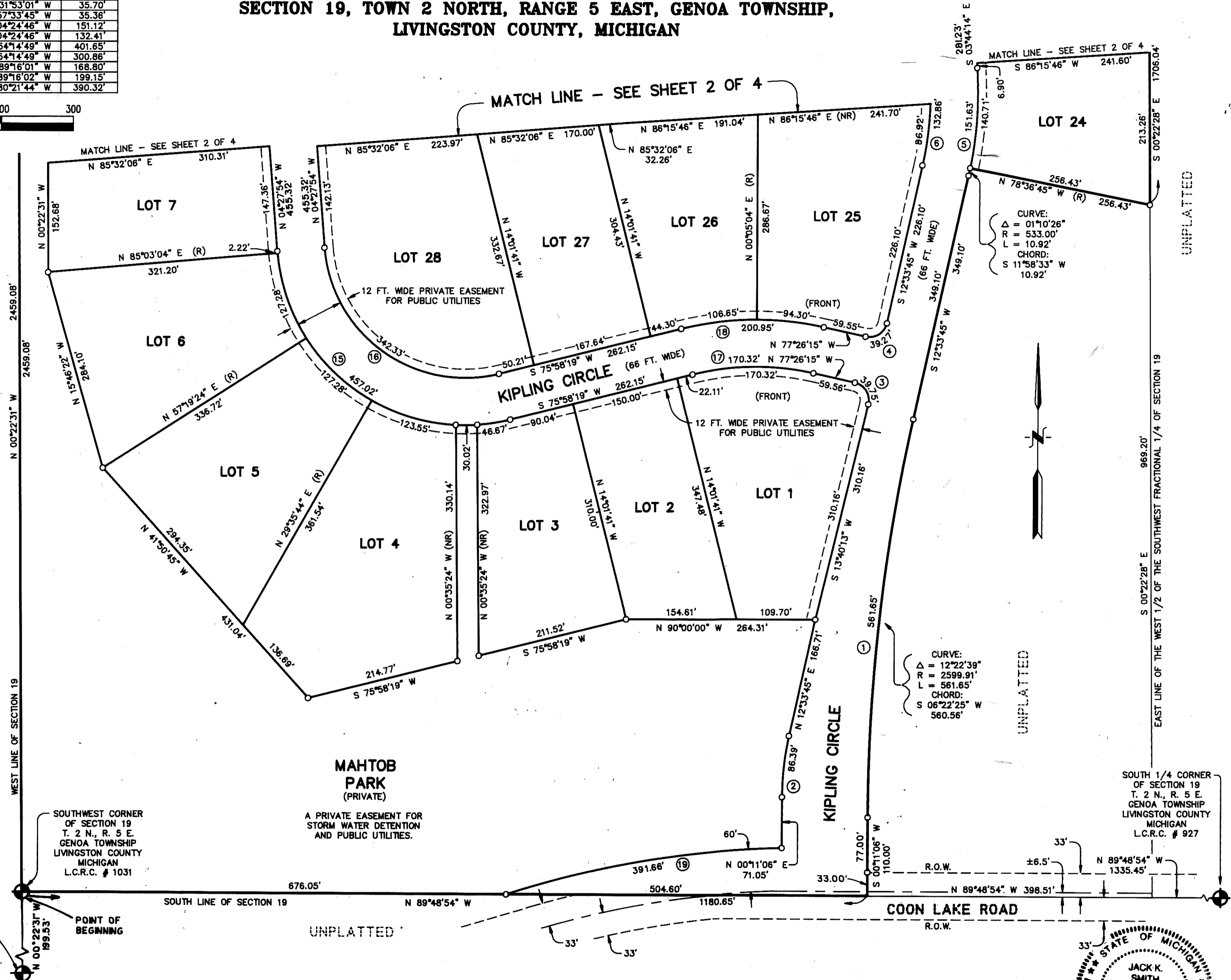
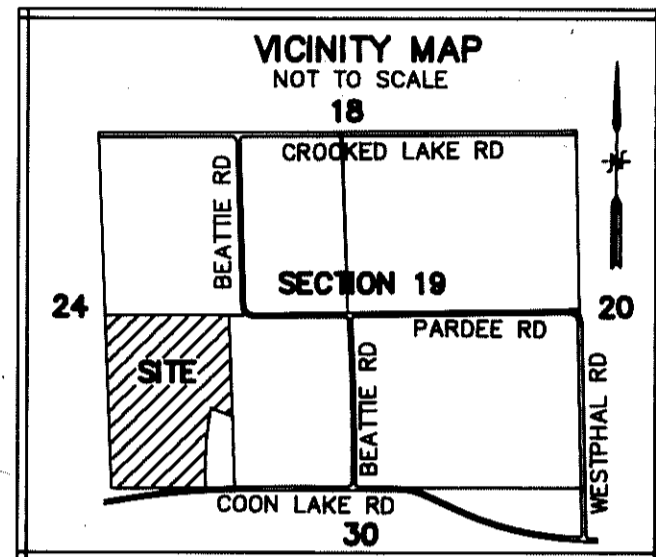
NOVEL ESTATES

A SUBDIVISION OF PART OF THE WEST 1/2 OF THE SOUTHWEST FRACTIONAL 1/4 OF SECTION 19, TOWN 2 NORTH, RANGE 5 EAST, GENOA TOWNSHIP, LIVINGSTON COUNTY, MICHIGAN

CURVE DATA				CHORD	
CURVE	RADIUS	LENGTH	DELTA	BEARING	CHORD
1	2599.91'	561.65'	12°22'39"	S 06°22'25" W	560.56'
2	400.00'	86.39'	12°22'29"	S 06°22'31" W	86.22'
3	25.00'	39.75'	91°06'28"	N 31°53'01" W	35.70'
4	25.00'	39.27'	90°00'00"	S 57°33'45" W	35.36'
5	533.00'	151.63'	16°18'00"	S 04°24'46" W	151.12'
6	467.00'	132.86'	16°18'00"	S 04°24'46" W	132.41'
15	263.00'	457.02'	99°33'50"	N 54°14'49" W	401.65'
16	197.00'	342.33'	99°33'50"	N 54°14'49" W	300.86'
17	367.00'	170.32'	26°35'25"	S 89°16'01" W	168.80'
18	433.00'	200.95'	26°35'26"	S 89°16'02" W	199.15'
19	1364.04'	391.66'	16°27'05"	S 80°21'44" W	390.32'



SCALE: 1 IN. = 100 FT.



CERTIFIED TRUE COPY OF RECORDED PLAT BY DEPARTMENT OF COMMERCE

By Maynard R. Dyer, P.S.
Acting Manager
Plat Section

Date 10/11/94

THIS PLAT IS SUBJECT TO RESTRICTIONS AS REQUIRED BY ACT 288 OF 1967, AS AMENDED ON CERTAIN LOTS WITH RESPECT TO THE REQUIREMENTS OF THE MICHIGAN DEPARTMENT OF NATURAL RESOURCES AND/OR THE MICHIGAN DEPARTMENT OF PUBLIC HEALTH, WHICH ARE RECORDED IN LIBER 1747, PAGE 280-322 OF RECORDS OF THIS COUNTY.

SOUTHWEST CORNER OF SECTION 19 T. 2 N., R. 5 E. GENOA TOWNSHIP LIVINGSTON COUNTY MICHIGAN L.C.R.C. # 1031

MAHTOB PARK (PRIVATE)

A PRIVATE EASEMENT FOR STORM WATER DETENTION AND PUBLIC UTILITIES.

SOUTHEAST CORNER OF SECTION 24 T. 2 N., R. 4 E. MARION TOWNSHIP LIVINGSTON COUNTY MICHIGAN L.C.R.C. # 1678

POINT OF BEGINNING

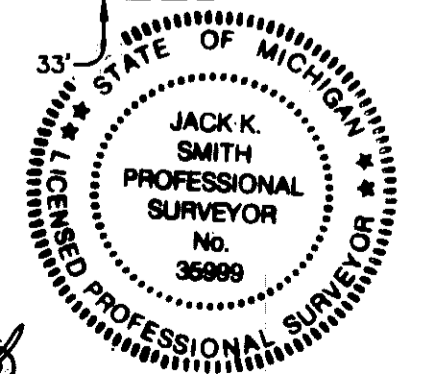
SOUTH 1/4 CORNER OF SECTION 19 T. 2 N., R. 5 E. GENOA TOWNSHIP LIVINGSTON COUNTY MICHIGAN L.C.R.C. # 927

LEGEND:

- ALL DIMENSIONS SHOWN ARE IN FEET.
- ALL CURVILINEAR DIMENSIONS SHOWN ARE ARC LENGTHS.
- THE SYMBOL "O" INDICATES A CONCRETE MONUMENT 4 INCHES IN DIAMETER, 36 INCHES IN LENGTH, ENCASING A 1/2 INCH x 3/8 INCH IRON ROD.
- LOT CORNERS ARE MARKED WITH 3/4 INCH x 18 INCH IRON PIPES WITH YELLOW PLASTIC CAPS MARKED "JKS 35999".
- THE SYMBOL (R) INDICATES A RADIAL LINE.
- THE SYMBOL (NR) INDICATES A NON-RADIAL LINE.
- BEARINGS WERE ESTABLISHED FROM "ROUNDSIFER ACRES" LIBER 12 OF PLATS, PAGE 20 LIVINGSTON COUNTY RECORDS.

DESINE ENGINEERS
7011 W. GRAND RIVER AVE.
BRIGHTON, MICHIGAN 48116
(313) 227-9533

Jack K. Smith
JACK K. SMITH, P.S. # 35999



UNPLATTED

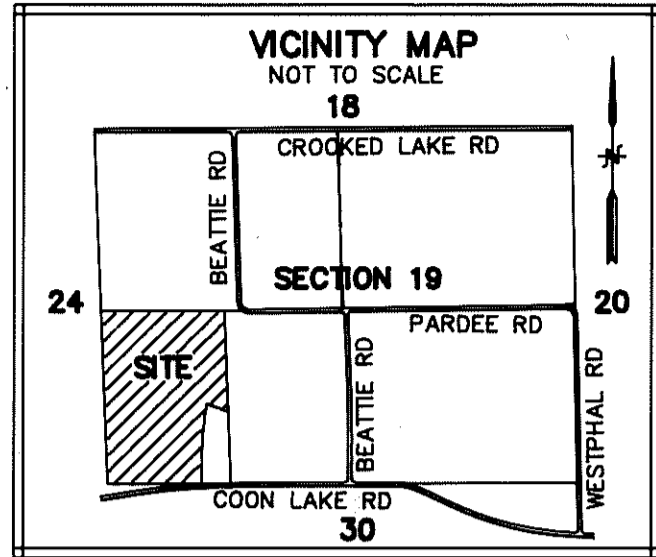
UNPLATTED

UNPLATTED

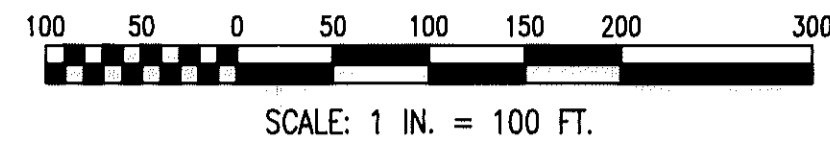
UNPLATTED

NOVEL ESTATES

A SUBDIVISION OF PART OF THE WEST 1/2 OF THE SOUTHWEST FRACTIONAL 1/4 OF SECTION 19, TOWN 2 NORTH, RANGE 5 EAST, GENOA TOWNSHIP, LIVINGSTON COUNTY, MICHIGAN



EAST 1/4 CORNER OF SECTION 24 T. 2 N., R. 4 E. MARION TOWNSHIP LIVINGSTON COUNTY MICHIGAN L.C.R.C. # 1679



CURVE DATA

CURVE	CURVE			CHORD	
	RADIUS	LENGTH	DELTA	BEARING	CHORD
6	467.00'	132.86'	16°18'02"	S 04°24'44" W	132.41'
7	766.00'	431.35'	32°15'49"	S 19°52'09" E	425.66'
8	700.00'	394.18'	32°15'51"	S 19°52'09" E	388.99'
13	766.00'	363.85'	27°12'56"	N 09°08'35" E	360.44'
14	700.00'	332.50'	27°12'56"	N 09°08'35" E	329.38'

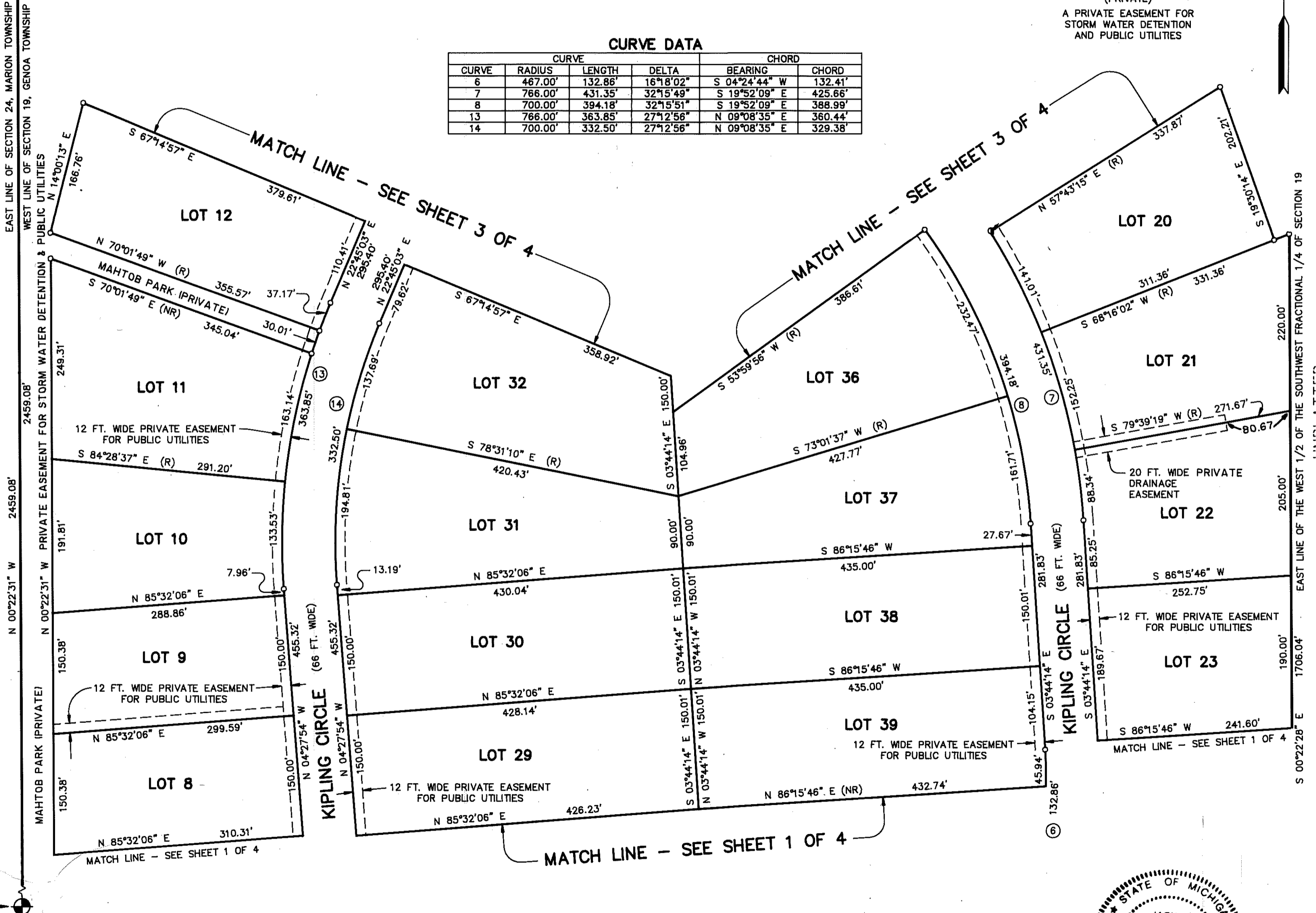
MAHTOB PARK
(PRIVATE)
A PRIVATE EASEMENT FOR STORM WATER DETENTION AND PUBLIC UTILITIES

THIS PLAT IS SUBJECT TO RESTRICTIONS AS REQUIRED BY ACT 289 OF 1967, AS AMENDED ON CERTAIN LOTS WITH RESPECT TO THE REQUIREMENTS OF THE MICHIGAN DEPARTMENT OF NATURAL RESOURCES AND/OR THE MICHIGAN DEPARTMENT OF PUBLIC HEALTH, WHICH ARE RECORDED IN LIBER 1867, PAGE 380-392 OF RECORDS OF THIS COUNTY.

SOUTHWEST CORNER OF SECTION 19 T. 2 N., R. 5 E. GENOA TOWNSHIP LIVINGSTON COUNTY MICHIGAN L.C.R.C. # 1031

UNPLATTED

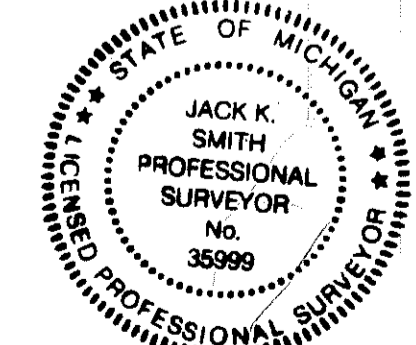
UNPLATTED



LEGEND:

- ALL DIMENSIONS SHOWN ARE IN FEET.
- ALL CURVILINEAR DIMENSIONS SHOWN ARE ARC LENGTHS.
- THE SYMBOL "O" INDICATES A CONCRETE MONUMENT 4 INCHES IN DIAMETER, 36 INCHES IN LENGTH, ENCASED A 1/2 INCH x 36 INCH IRON ROD.
- LOT CORNERS ARE MARKED WITH 3/4 INCH x 18 INCH IRON PIPES WITH YELLOW PLASTIC CAPS MARKED "JKS 35999".
- THE SYMBOL (R) INDICATES A RADIAL LINE.
- THE SYMBOL (NR) INDICATES A NON-RADIAL LINE.
- BEARINGS WERE ESTABLISHED FROM "ROUNSIFER ACRES" LIBER 12 OF PLATS, PAGE 20 LIVINGSTON COUNTY RECORDS.

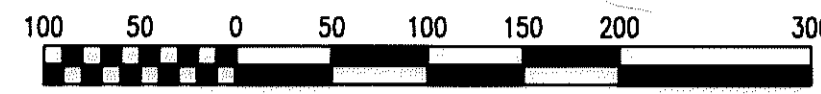
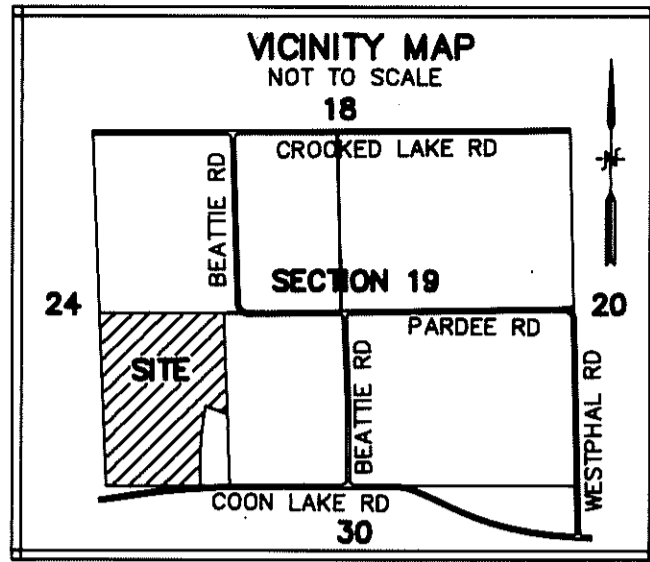
DESINE INC
ENGINEERS
7011 W. GRAND RIVER AVE.
BRIGHTON, MICHIGAN 48116
(313) 227-9533



Jack K. Smith
JACK K. SMITH, P.S. # 35999

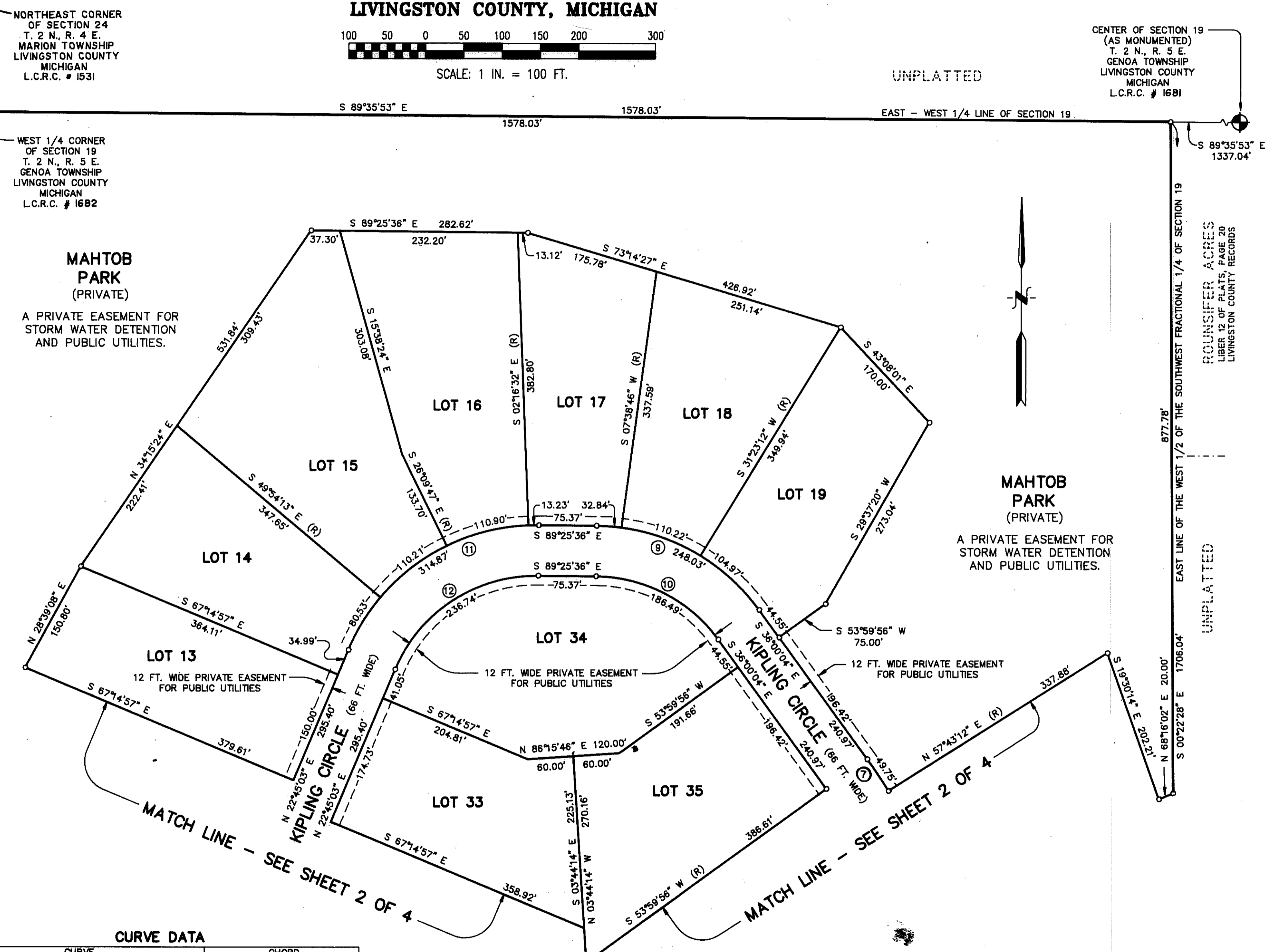
NOVEL ESTATES

A SUBDIVISION OF PART OF THE WEST 1/2 OF THE SOUTHWEST FRACTIONAL 1/4 OF SECTION 19, TOWN 2 NORTH, RANGE 5 EAST, GENOA TOWNSHIP, LIVINGSTON COUNTY, MICHIGAN



UNPLATTED

CENTER OF SECTION 19 (AS MONUMENTED) T. 2 N., R. 5 E. GENOA TOWNSHIP LIVINGSTON COUNTY MICHIGAN L.C.R.C. # 1681



EAST 1/4 CORNER OF SECTION 24 T. 2 N., R. 4 E. MARION TOWNSHIP LIVINGSTON COUNTY MICHIGAN L.C.R.C. # 1679

WEST 1/4 CORNER OF SECTION 19 T. 2 N., R. 5 E. GENOA TOWNSHIP LIVINGSTON COUNTY MICHIGAN L.C.R.C. # 1682

MAHTOB PARK (PRIVATE)
A PRIVATE EASEMENT FOR STORM WATER DETENTION AND PUBLIC UTILITIES.

MAHTOB PARK (PRIVATE)
A PRIVATE EASEMENT FOR STORM WATER DETENTION AND PUBLIC UTILITIES.

ROUNSFER ACRES LIBER 12 OF PLATS, PAGE 20 LIVINGSTON COUNTY RECORDS

THIS PLAT IS SUBJECT TO RESTRICTIONS AS REQUIRED BY ACT 289 OF 1967, AS AMENDED, ON CERTAIN LOTS WITH RESPECT TO THE REQUIREMENTS OF THE MICHIGAN DEPARTMENT OF NATURAL RESOURCES AND/OR THE MICHIGAN DEPARTMENT OF PUBLIC HEALTH, WHICH ARE RECORDED IN LIBER 1767, PAGE 280-352 OF RECORDS OF THIS COUNTY.

SOUTHWEST CORNER OF SECTION 19 T. 2 N., R. 5 E. GENOA TOWNSHIP LIVINGSTON COUNTY MICHIGAN L.C.R.C. # 1031

CURVE DATA

CURVE	RADIUS	LENGTH	DELTA	BEARING	CHORD
9	266.00'	248.03'	53°25'32"	S 62°42'50" E	239.14'
10	200.00'	186.49'	53°25'32"	S 62°42'50" E	179.81'
11	266.00'	314.87'	67°49'21"	N 56°39'43" E	296.81'
12	200.00'	236.74'	67°49'21"	N 56°39'43" E	223.16'
7	766.00'	431.35'	32°15'49"	S 19°52'09" E	425.66'

LEGEND:

- ALL DIMENSIONS SHOWN ARE IN FEET.
- ALL CURVILINEAR DIMENSIONS SHOWN ARE ARC LENGTHS.
- THE SYMBOL "o" INDICATES A CONCRETE MONUMENT 4 INCHES IN DIAMETER, 36 INCHES IN LENGTH, ENCASED A 1/2 INCH x 36 INCH IRON ROD.
- LOT CORNERS ARE MARKED WITH 3/4 INCH x 18 INCH IRON PIPES WITH YELLOW PLASTIC CAPS MARKED "JKS 35999".
- THE SYMBOL (R) INDICATES A RADIAL LINE.
- THE SYMBOL (NR) INDICATES A NON-RADIAL LINE.
- BEARINGS WERE ESTABLISHED FROM "ROUNSFER ACRES" LIBER 12 OF PLATS, PAGE 20 LIVINGSTON COUNTY RECORDS.

DESINE ENGINEERS
7011 W. GRAND RIVER AVE.
BRIGHTON, MICHIGAN 48116
(313) 227-9533

STATE OF MICHIGAN
JACK K. SMITH
PROFESSIONAL SURVEYOR
No. 35999
LICENSED PROFESSIONAL SURVEYOR
JACK K. SMITH, P.S. # 35999