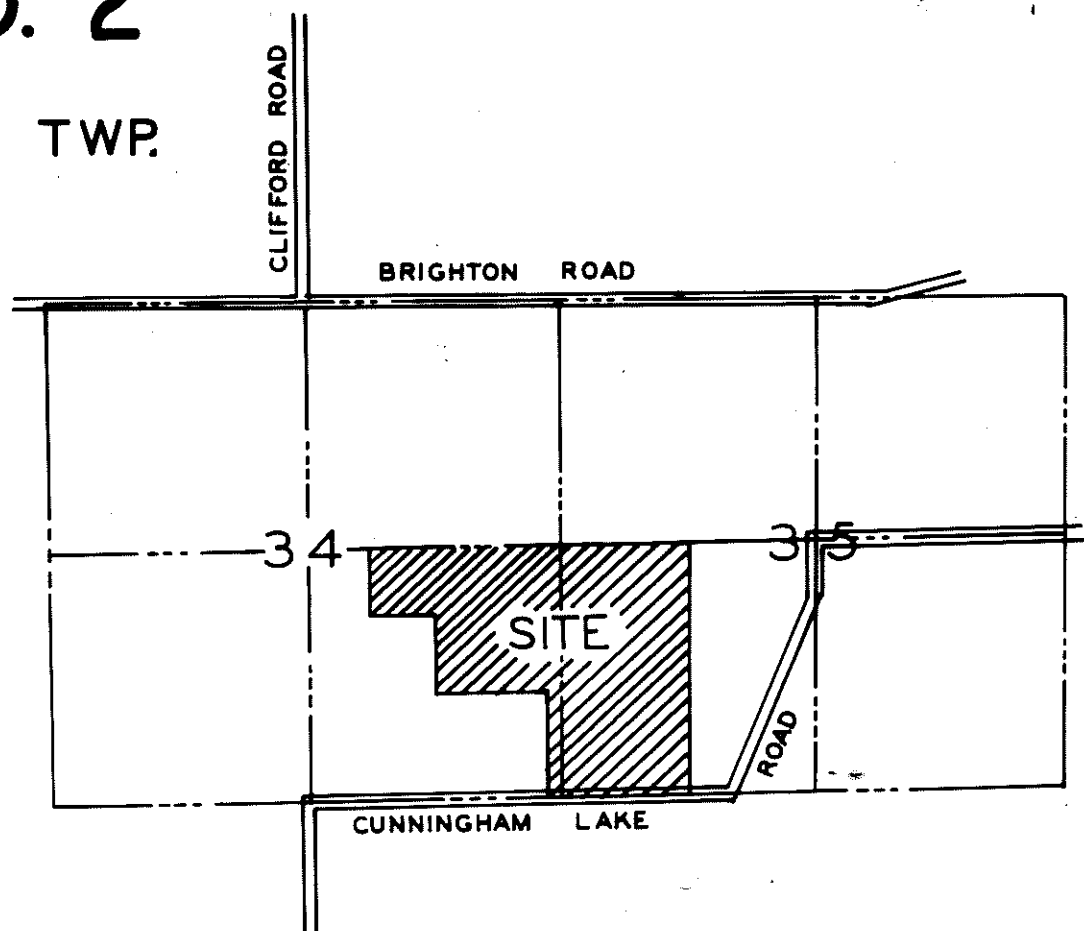
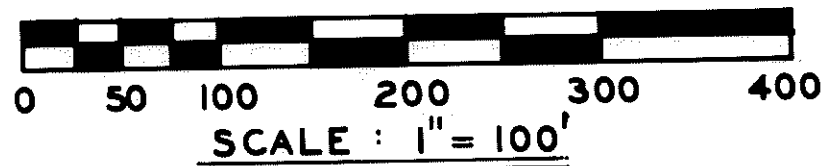
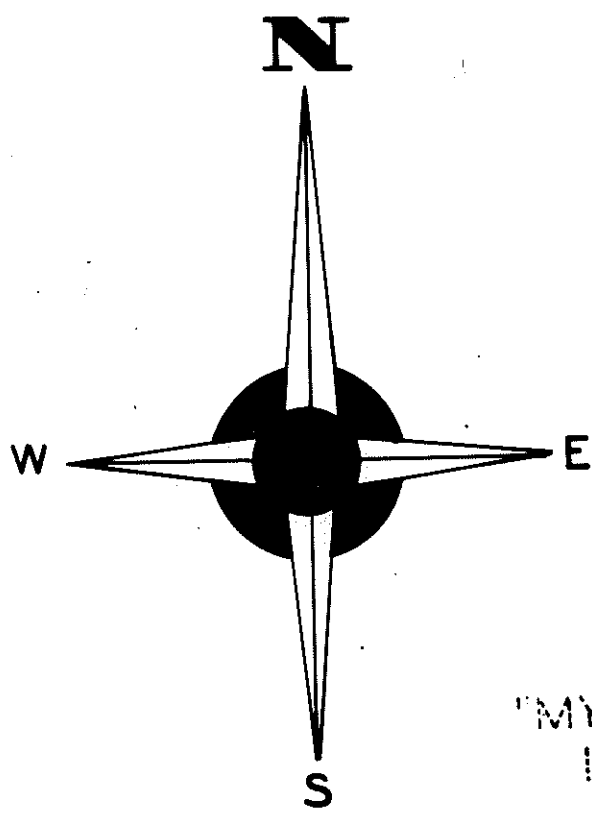


This Plat is subject to restrictions as required by Act 288 of 1967, as amended on certain lots with respect to the requirements of the Michigan Department of Natural Resources and/or the Michigan Department of Public Health, which are recorded in Liber 163, Page 213-220 of records of this county.

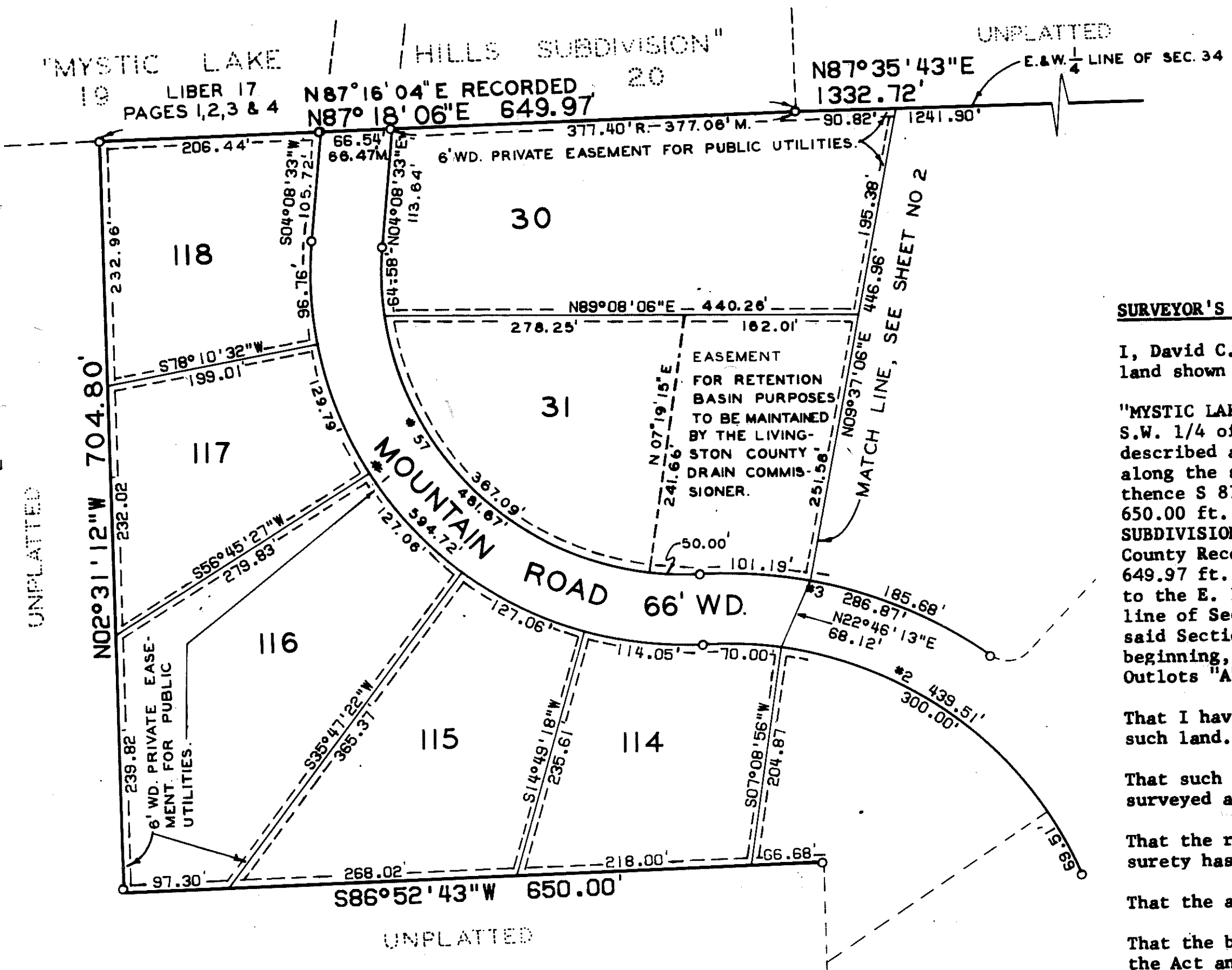
MYSTIC LAKE HILLS SUBDIVISION NO. 2"

PART OF S.E. 1/4 OF SECTION 34 & PART OF S.W. 1/4 OF SECTION 35, T.2N., R.5E., GENOA TWP.

LIVINGSTON COUNTY, MICHIGAN



LOCATION MAP
SCALE: 1" = 2000'



PLAT LEGEND

1. ALL DIMENSIONS ARE IN FEET.
2. ALL CURVE DIMENSIONS ARE MEASURED ALONG THE ARC.
3. ALL BEARINGS ARE RELATED TO THE ADJACENT PLAT OF "PRAIRIE VIEW HILLS" AS RECORDED IN LIBER 15 OF PLATS, PAGES 46, 47, 48 AND 49.
4. CONCRETE MONUMENTS HAVE BEEN SET AT POINTS MARKED "o".
5. LOT CORNERS HAVE BEEN MARKED WITH 1/2" x 1/8" STEEL ROD.

SURVEYOR'S CERTIFICATE:

I, David C. Finney, Surveyor, certify: That I have surveyed, divided and mapped the land shown on this plat, described as follows:

"MYSTIC LAKE HILLS SUBDIVISION NO. 2", part of the S.E. 1/4 of Section 34 and part of S.W. 1/4 of Section 35, T.2N., R.5E., Genoa Township, Livingston County, Michigan, described as beginning at the S.E. corner of said Section 34; thence S 87°34'57" W along the south line of said Section 34, 171.64 ft.; thence N 02°31'12" W 1150.00 ft.; thence S 87°34'57" W 1150.00 ft.; thence N 02°31'12" W 802.86 ft.; thence S 86°52'43" 650.00 ft.; thence N 02°31'12" W 704.80 ft. to the southerly line of "MYSTIC LAKE HILLS SUBDIVISION" as recorded in Liber 17 of Plats, pages 1 through 4 inclusive, Livingston County Records; thence N 87°18'06" E along the southerly line of said subdivision, 649.97 ft.; thence N 87°35'43" E along the E. & W. 1/4 line of Section 34, 1332.72 ft. to the E. 1/4 corner of said Section 34; thence N 87°20'17" E along the E. & W. 1/4 line of Sec. 35, 1319.26 ft.; thence S 02°36'12" E 2657.33 ft. to the south line of said Section 35; thence S 87°32'42" W along said line, 1334.20 ft. to the point of beginning, containing 141.80 acres and 89 lots numbered 30 through 118 inclusive, and Outlots "A", "B", AND "C".

That I have made such survey, land-division and Plat by the direction of the owners of such land.

That such Plat is a correct representation of all the exterior boundaries of the land surveyed and the subdivision of it.

That the required monuments and lot markers have been located in the ground or that surety has been deposited with the municipality, as required by Section 125 of the Act.

That the accuracy of survey is within the limits required by Section 126 of the Act.

That the bearings shown on the Plat are expressed as required by Section 126(3) of the Act and as explained in the legend.

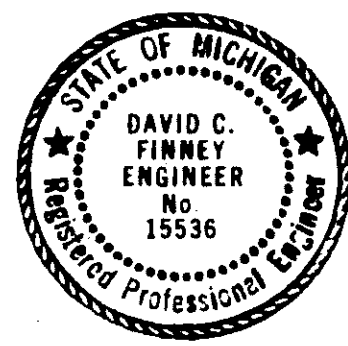
DATE: **5-20-76**

FINNEY, CARNAHAN & ASSOCIATES, INC.

CURVE DATA

NUMBER	RADIUS	ARC	DELTA	CHORD	CHORD BRNG
1	347.20	594.72	098°08'33"	524.64	S44°55'43.5"E
2	359.74	439.51	070°00'00"	412.68	S59°00'00.0"E
3	425.74	286.87	038°36'25"	281.48	N74°41'47.5"W
57	281.20	481.67	098°08'33"	424.91	N44°55'43.5"W

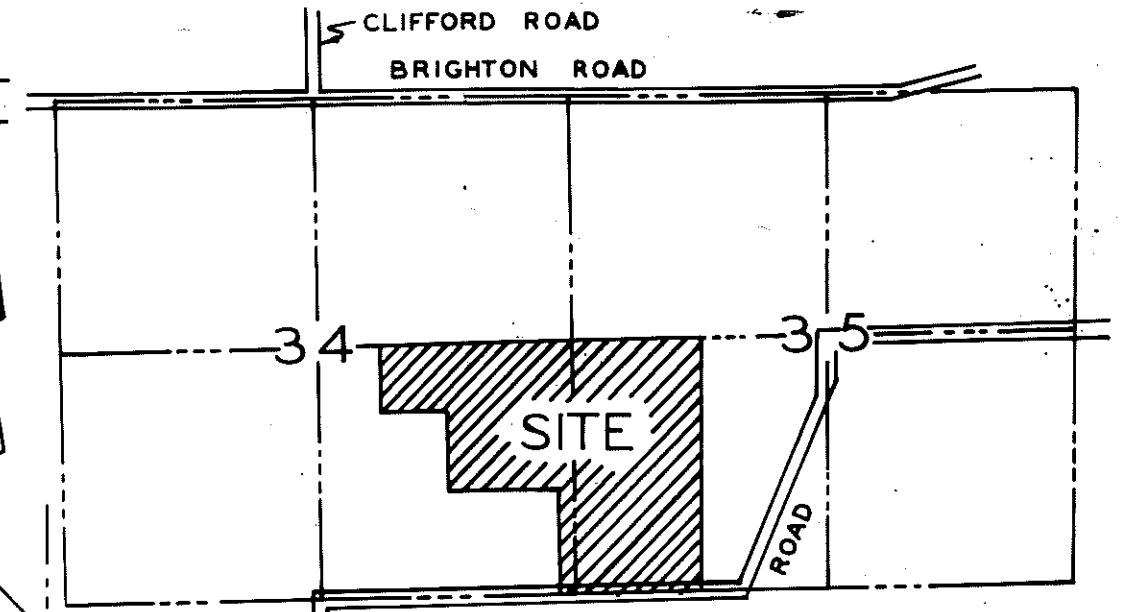
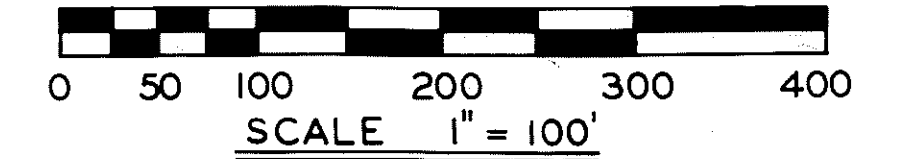
Certified true copy of Recorded plat
 Allison Green
 ALLISON GREEN
 STATE TREASURER
 By Richard E. Lomax
 Richard E. Lomax - Plat Examiner
 Date August 26, 1976



David C. Finney
 David C. Finney, President
 P.E. No. 15536
 1044 E. West Maple Road
 Walled Lake, Michigan 48088

"MYSTIC LAKE HILLS SUBDIVISION NO.2"

PART OF SE 1/4 OF SEC 34 & PART
OF SW 1/4 OF SEC. 35, T.2N., R.5E.
GENOA TOWNSHIP
LIVINGSTON COUNTY, MICHIGAN



LOCATION MAP

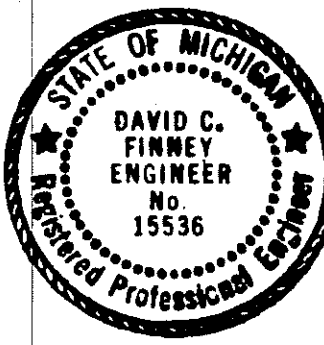
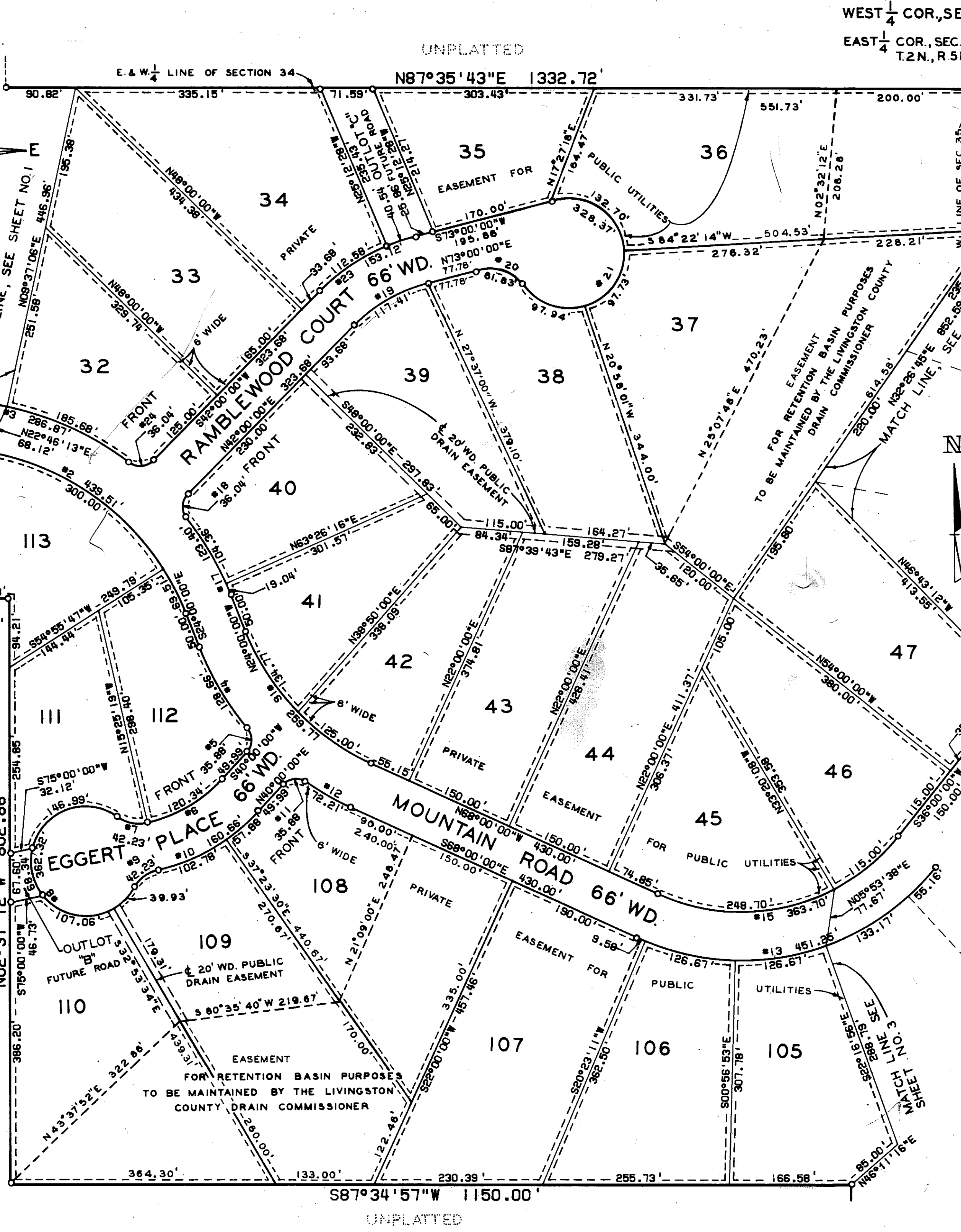
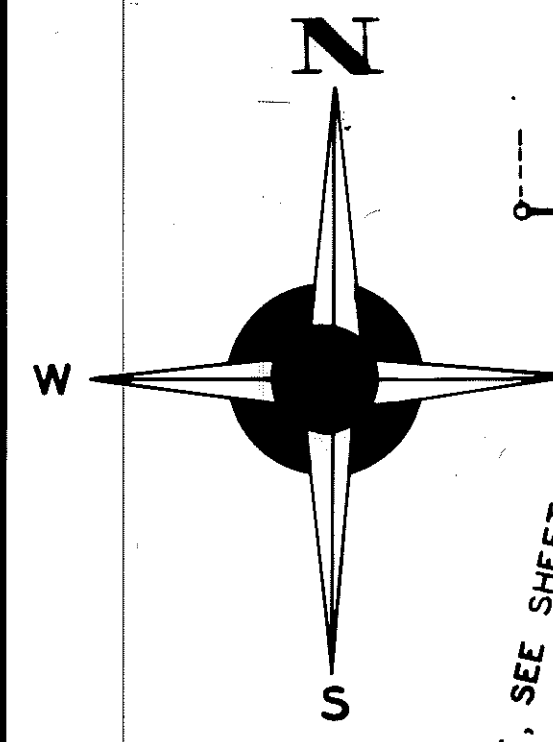
SCALE 1" = 200'

PLAT LEGEND

1. ALL DIMENSIONS ARE IN FEET.
2. ALL CURVE DIMENSIONS ARE MEASURED ALONG THE ARC.
3. ALL BEARINGS ARE RELATED TO THE ADJACENT PLAT OF "PRAIRIE VIEW HILLS" AS RECORDED IN LIBER 15 OF PLATS PAGES 46,47,48 AND 49
4. CONCRETE MONUMENTS HAVE BEEN SET AT ALL POINTS MARKED "o"
5. LOT CORNERS HAVE BEEN MARKED WITH 1/2" X 18" STEEL ROD.

CURVE DATA

NUMBER	RADIUS	ARC	DELTA	CHORD	CHORD BRNG
2	359.74	439.51	070°00'00"	412.68	S59°00'00.0"E
3	425.74	286.87	038°36'25"	281.48	N74°41'47.5"W
4	404.26	128.66	018°14'05"	128.12	S33°07'02.5"E
5	25.00	35.88	082°14'05"	32.88	S01°07'02.5"E
6	197.00	120.34	035°00'00"	118.48	S57°30'00.0"W
7	50.00	42.23	048°23'40"	40.99	N80°48'10.0"W
8	75.00	362.32	276°47'20"	99.60	S15°00'00.0"E
9	50.00	42.23	048°23'40"	40.99	N50°48'10.0"E
10	263.00	160.66	035°00'00"	158.17	N57°30'00.0"E
11	25.00	35.88	082°14'05"	32.88	N81°07'02.5"E
12	404.26	72.21	010°14'05"	72.12	S62°52'57.5"E
13	340.19	451.25	076°00'00"	418.88	N74°00'00.0"E
14	331.79	110.03	019°00'00"	109.52	S45°30'00.0"W
15	274.19	363.70	076°00'00"	337.62	S74°00'00.0"W
16	338.26	259.77	044°00'00"	253.43	N46°00'00.0"W
17	425.74	123.40	016°36'25"	122.97	N32°18'12.5"W
18	25.00	36.04	082°36'25"	33.00	N00°41'47.5"E
19	217.00	117.41	031°00'00"	115.98	N57°30'00.0"E
20	50.00	61.83	070°51'09"	57.97	S71°34'25.5"E
21	75.00	328.37	250°51'09"	122.23	S18°25'34.5"W
22	DELETED FROM PLAT				
23	283.00	153.12	031°00'00"	151.26	S57°30'00.0"W
24	25.00	36.04	082°36'25"	33.00	S83°18'12.5"W



S87°34'57"W 1150.00'

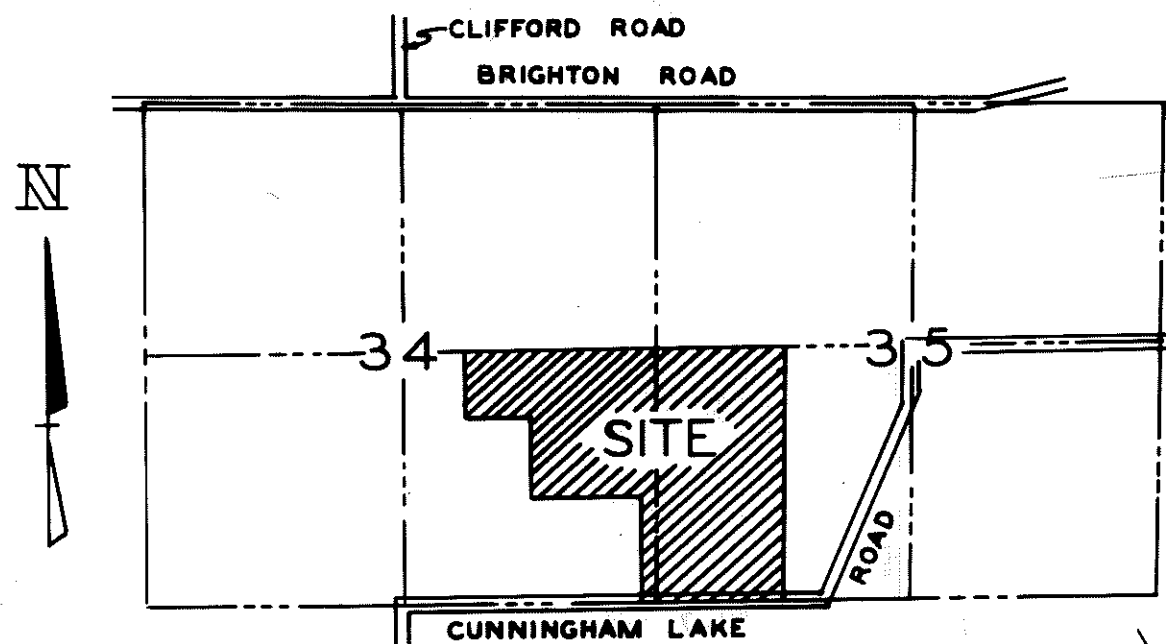
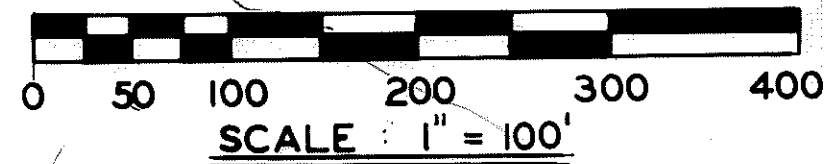
UNPLATTED

CURVE DATA

NUMBER	RADIUS	ARC	DELTA	CHORD	CHORD BRNG
13	340.19	451.25	076°00'00"	418.88	N74°00'00.0"E
14	331.79	110.03	019°00'00"	109.52	S45°30'00.0"W
15	274.19	363.70	076°00'00"	337.62	S74°00'00.0"W
25	265.79	88.14	019°00'00"	87.74	N45°30'00.0"E
26	352.72	344.74	056°00'00"	331.18	N27°00'00.0"E
27	333.53	553.01	095°00'00"	491.81	N46°30'00.0"E
28	955.19	200.05	012°00'00"	199.69	N88°00'00.0"E
29	25.00	39.27	090°00'00"	35.36	S53°00'00.0"E
30	390.59	265.87	039°00'00"	260.76	S11°30'00.0"W
31	507.88	274.79	031°00'00"	271.45	S46°30'00.0"W
32	525.78	697.42	076°00'00"	647.41	S24°00'00.0"W
33	573.88	310.50	031°00'00"	306.73	N46°30'00.0"E
34	456.59	310.79	039°00'00"	304.83	N11°30'00.0"E
35	263.00	137.20	029°53'19"	135.64	S22°56'39.5"W
36	197.00	120.13	034°56'19"	118.28	N20°25'09.5"W
37	263.00	160.38	034°56'19"	157.90	S20°25'09.5"E
38	197.00	35.01	010°10'54"	34.96	S32°47'52.0"E
39	25.00	47.87	109°42'25"	40.88	S27°08'47.5"W
40	889.19	186.23	012°00'00"	185.89	S88°00'00.0"W
41	399.53	662.45	095°00'00"	589.13	S46°30'00.0"W
42	286.72	280.24	056°00'00"	269.21	S27°00'00.0"W

"MYSTIC LAKE HILLS SUBDIVISION NO.2"

PART OF S.E. 1/4 OF SEC. 34 & PART OF S.W. 1/4 OF SEC. 35, T.2N.,R.5E GENOA TOWNSHIP LIVINGSTON COUNTY, MICHIGAN

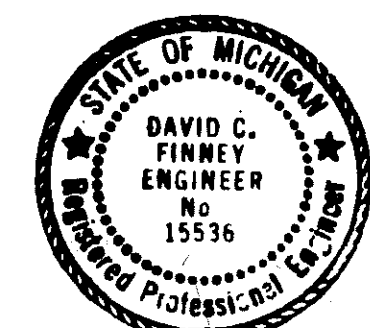
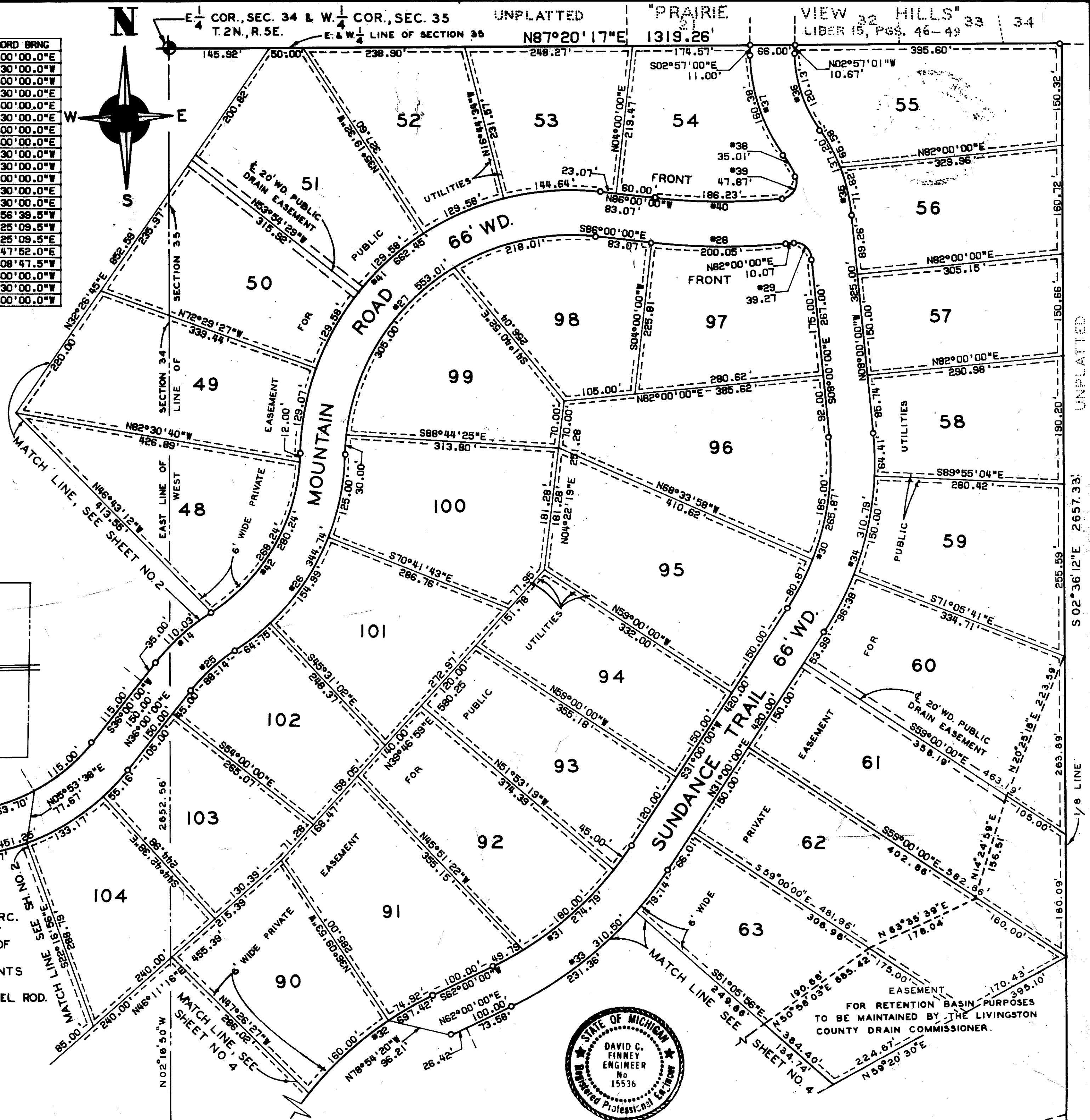


LOCATION MAP

SCALE: 1" = 2000'

PLAT LEGEND

1. ALL DIMENSIONS ARE IN FEET.
2. ALL CURVE DIMENSIONS ARE MEASURED ALONG THE ARC.
3. ALL BEARINGS ARE RELATED TO THE ADJACENT PLAT OF "PRAIRIE VIEW HILLS" AS RECORDED IN LIBER 15 OF PLATS, PAGES 46,47,48 AND 49.
4. CONCRETE MONUMENTS HAVE BEEN SET AT ALL POINTS MARKED "o".
5. LOT CORNERS HAVE BEEN MARKED WITH 1/2" X 18" STEEL ROD.



FOR RETENTION BASIN PURPOSES TO BE MAINTAINED BY THE LIVINGSTON COUNTY DRAIN COMMISSIONER.

UNPLATTED

S 02°36'12"E 2657.33'

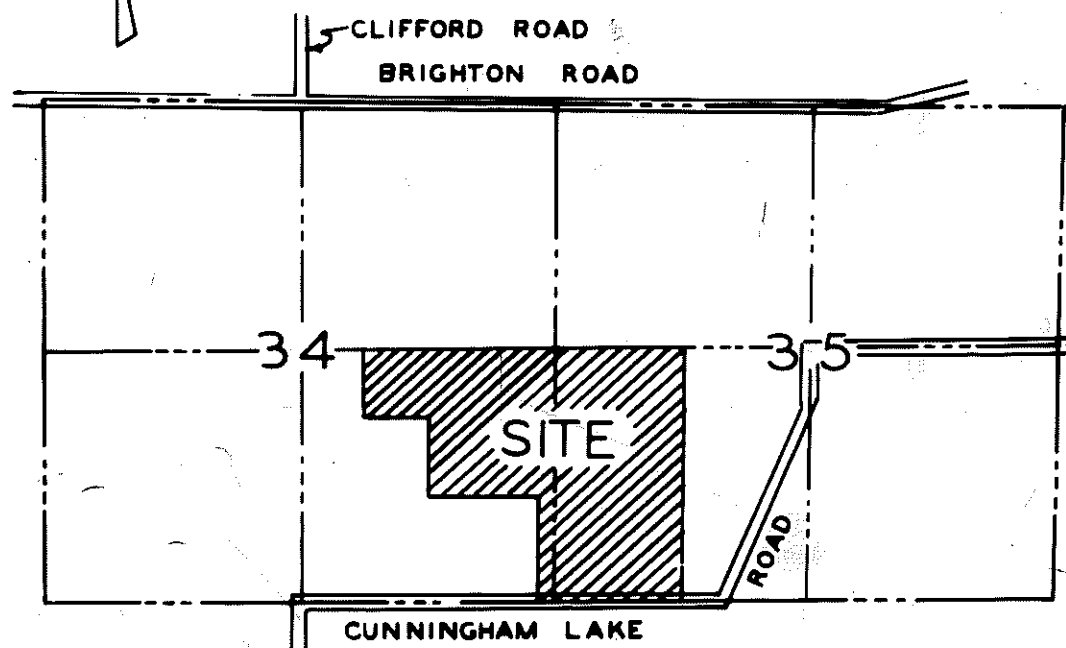
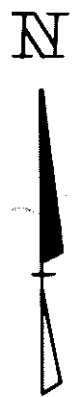
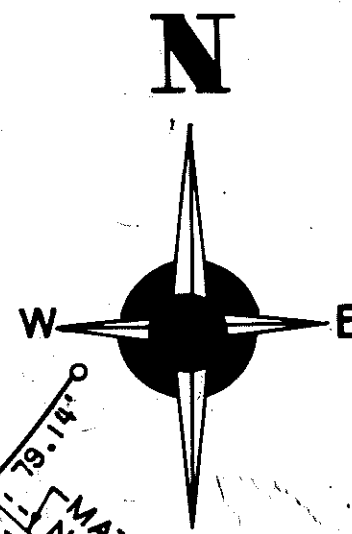
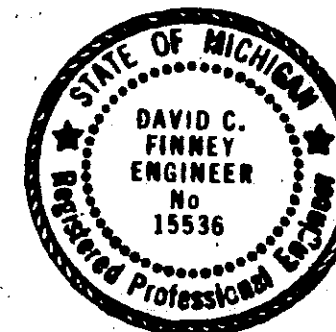
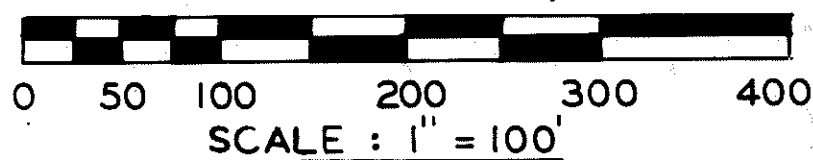
1/8 LINE

CURVE DATA

NUMBER	RADIUS	ARC	DELTA	CHORD	CHORD BRNG
32	525.78	697.42	076°00'00"	647.41	S24°00'00.0"W
33	573.88	310.50	031°00'00"	306.73	N46°30'00.0"E
43	378.33	429.20	065°00'00"	406.55	S46°30'00.0"E
44	197.00	263.18	076°32'42"	244.04	S40°43'39.0"E
45	25.00	39.27	090°00'00"	35.36	S42°32'42.0"W
46	25.00	39.27	090°00'00"	35.36	N47°27'18.0"W
47	263.00	351.36	076°32'42"	325.81	N40°43'39.0"W
48	25.00	39.27	090°00'00"	35.36	N34°00'00.0"W
49	197.00	226.93	066°00'00"	214.59	N44°00'00.0"E
50	50.00	42.23	048°23'40"	40.99	S78°48'10.0"E
51	75.00	362.32	276°47'20"	99.60	N13°00'00.0"W
52	50.00	42.23	048°23'40"	40.99	S52°48'10.0"W
53	263.00	302.95	066°00'00"	286.48	S44°00'00.0"W
54	25.00	39.27	090°00'00"	35.36	S56°00'00.0"W
55	312.33	354.33	065°00'00"	335.63	N46°30'00.0"W
56	459.78	609.88	076°00'00"	566.14	N24°00'00.0"E

"MYSTIC LAKE HILLS SUBDIVISION NO.2"

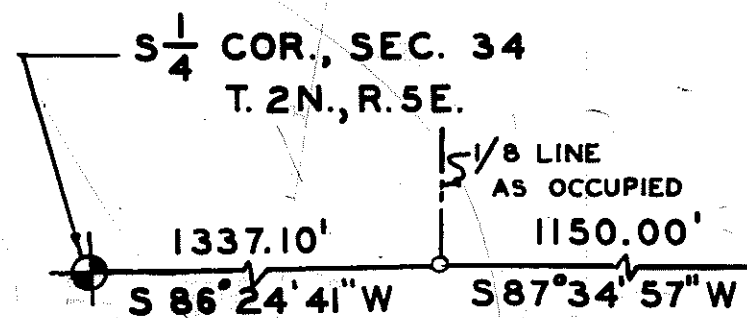
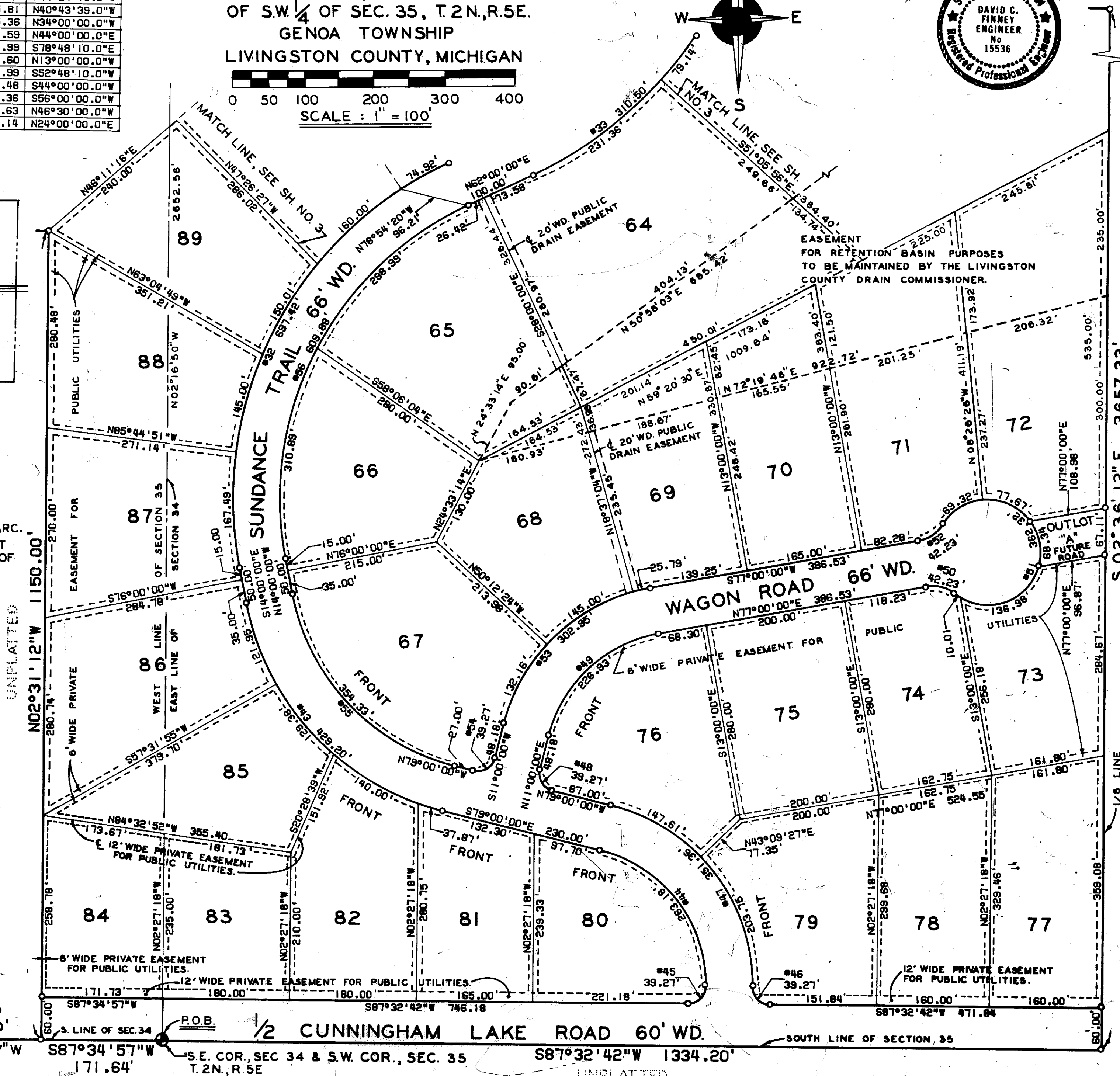
PART OF S.E. 1/4 OF SEC. 34 & PART OF S.W. 1/4 OF SEC. 35, T.2N.,R.5E. GENOA TOWNSHIP LIVINGSTON COUNTY, MICHIGAN



LOCATION MAP
SCALE: 1" = 2000'

PLAT LEGEND

1. ALL DIMENSIONS ARE IN FEET.
2. ALL CURVE DIMENSIONS ARE MEASURED ALONG THE ARC.
3. ALL BEARINGS ARE RELATED TO THE ADJACENT PLAT OF "PRAIRIE VIEW HILLS" AS RECORDED IN LIBER 15 OF PLATS, PAGES 46,47,48 AND 49.
4. CONCRETE MONUMENTS HAVE BEEN SET AT ALL POINTS MARKED "o".
5. LOT CORNERS HAVE BEEN MARKED WITH 1/2" X 1/8" STEEL ROD.



1/2 CUNNINGHAM LAKE ROAD 60' WD.
S.E. COR., SEC 34 & S.W. COR., SEC. 35
S 87°32'42"W 1334.20'

UNPLATTED