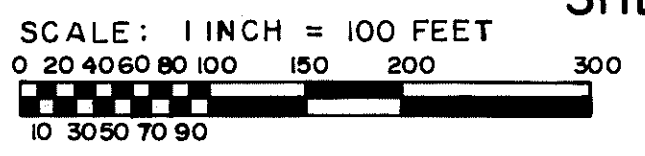


"MYSTIC LAKE HILLS SUBDIVISION"

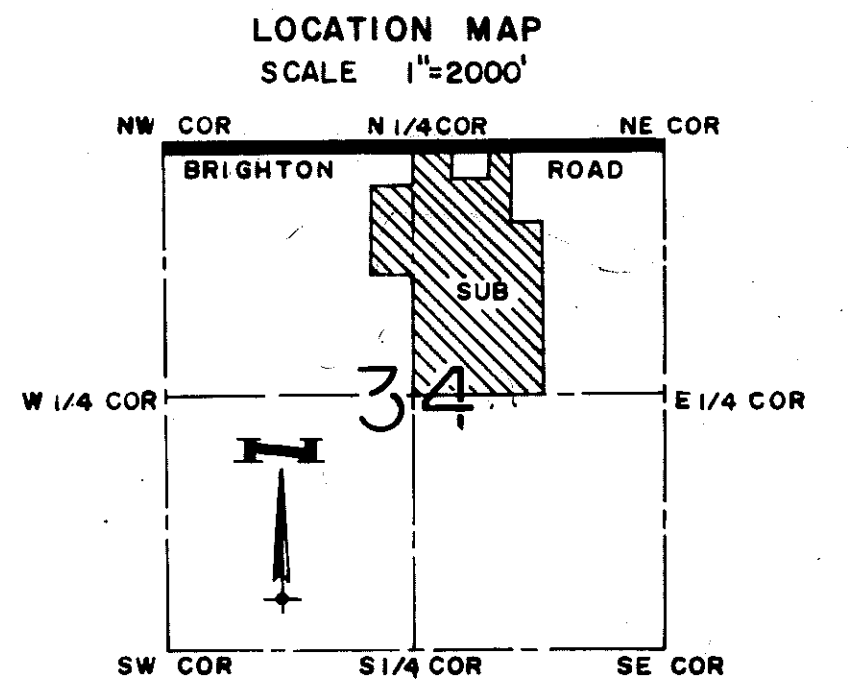
PART OF THE NE 1/4 & PART OF THE NW 1/4 OF SECTION 34, T2N.-R5E.
GENOA TOWNSHIP, LIVINGSTON COUNTY, MICHIGAN.



SHEET 1
OF 4 SHEETS

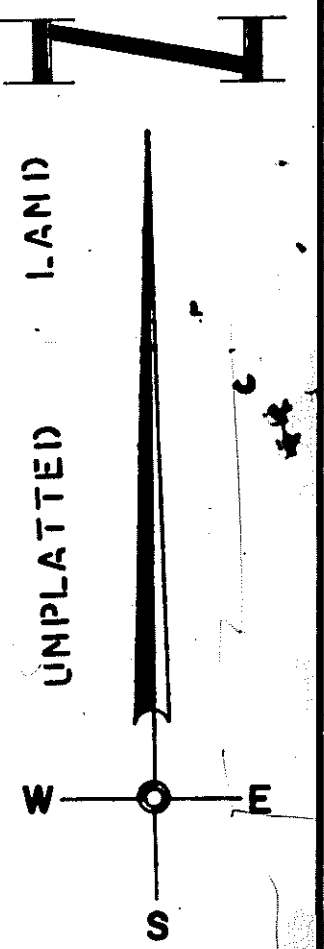
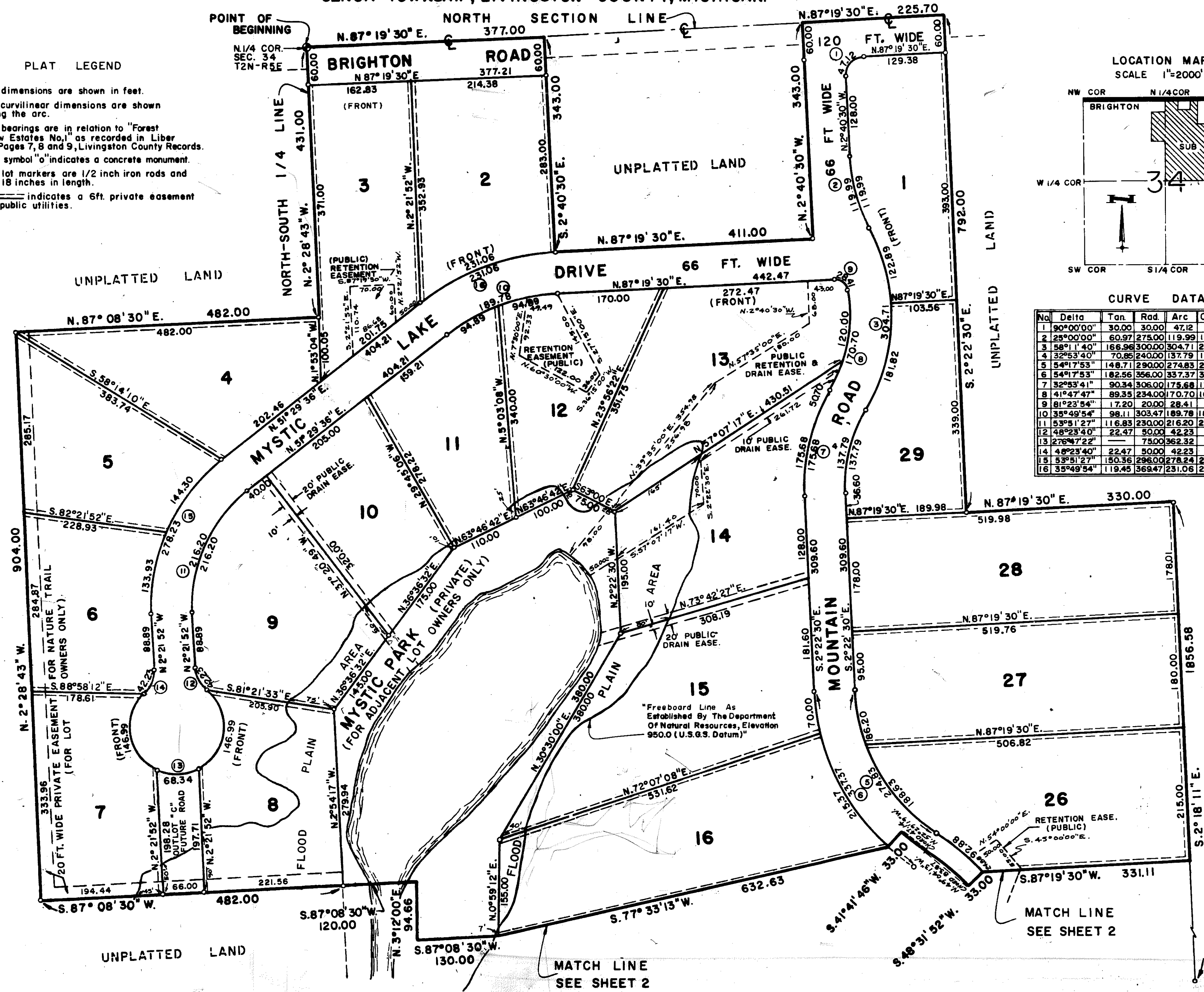
PLAT LEGEND

All dimensions are shown in feet.
All curvilinear dimensions are shown along the arc.
All bearings are in relation to "Forest View Estates No. 1" as recorded in Liber 14, Pages 7, 8 and 9, Livingston County Records.
The symbol "o" indicates a concrete monument.
All lot markers are 1/2 inch iron rods and are 18 inches in length.
--- indicates a 6ft. private easement for public utilities.



CURVE DATA

No.	Delta	Tan	Rad.	Arc	Chord	Ch. Brg.
1	90°00'00"	30.00	30.00	47.12	42.43	N42°19'27"E
2	25°00'00"	60.97	275.00	119.99	119.04	N15°10'30"W
3	58°11'40"	166.96	300.00	304.71	291.78	N1°25'20"E
4	32°53'40"	70.85	240.00	137.79	135.90	N14°04'20"E
5	54°17'53"	148.71	290.00	274.83	264.66	N29°31'26"W
6	54°17'53"	182.56	356.00	337.37	324.89	N29°31'26"W
7	32°53'41"	90.34	306.00	175.68	173.28	S14°04'20"W
8	41°47'47"	89.35	234.00	170.70	166.94	S9°37'16"W
9	81°23'54"	17.20	20.00	28.41	26.08	S51°56'33"E
10	35°49'54"	98.11	303.47	189.78	186.71	N69°24'33"E
11	53°51'27"	116.83	230.00	216.20	206.33	N24°33'52"E
12	48°23'40"	22.47	50.00	42.23	40.99	N26°33'44"W
13	27°47'22"	75.00	362.32	99.60	96.78	N87°36'08"E
14	48°23'40"	22.47	50.00	42.23	40.99	S21°49'59"W
15	53°51'27"	150.36	296.00	278.24	268.11	S24°33'52"W
16	35°49'54"	119.45	369.47	231.08	227.32	S69°24'33"W



MATCH LINE
SEE SHEET 2

MATCH LINE
SEE SHEET 2

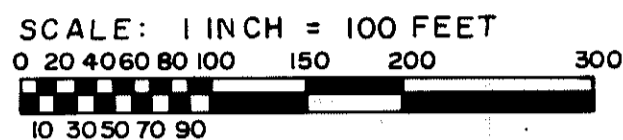
"Freeboard Line As
Established By The Department
Of Natural Resources, Elevation
950.0 (U.S.G.S. Datum)"

"MYSTIC LAKE HILLS SUBDIVISION"

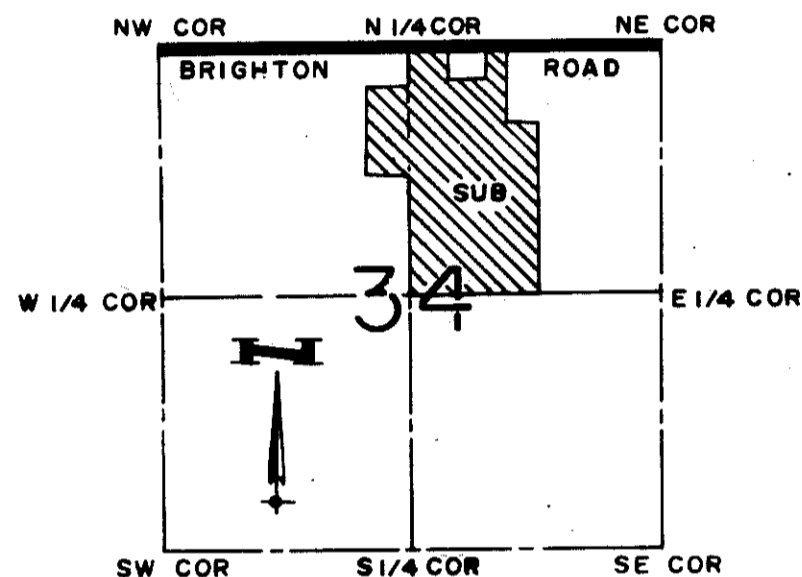
PART OF THE NE. 1/4 & PART OF THE NW. 1/4 OF SECTION 34, T.2N.-R.5E.
GENOA TOWNSHIP, LIVINGSTON COUNTY, MICHIGAN.

MATCH LINE
SEE SHEET 1

UNPLATTED LAND



LOCATION MAP
SCALE 1"=2000'



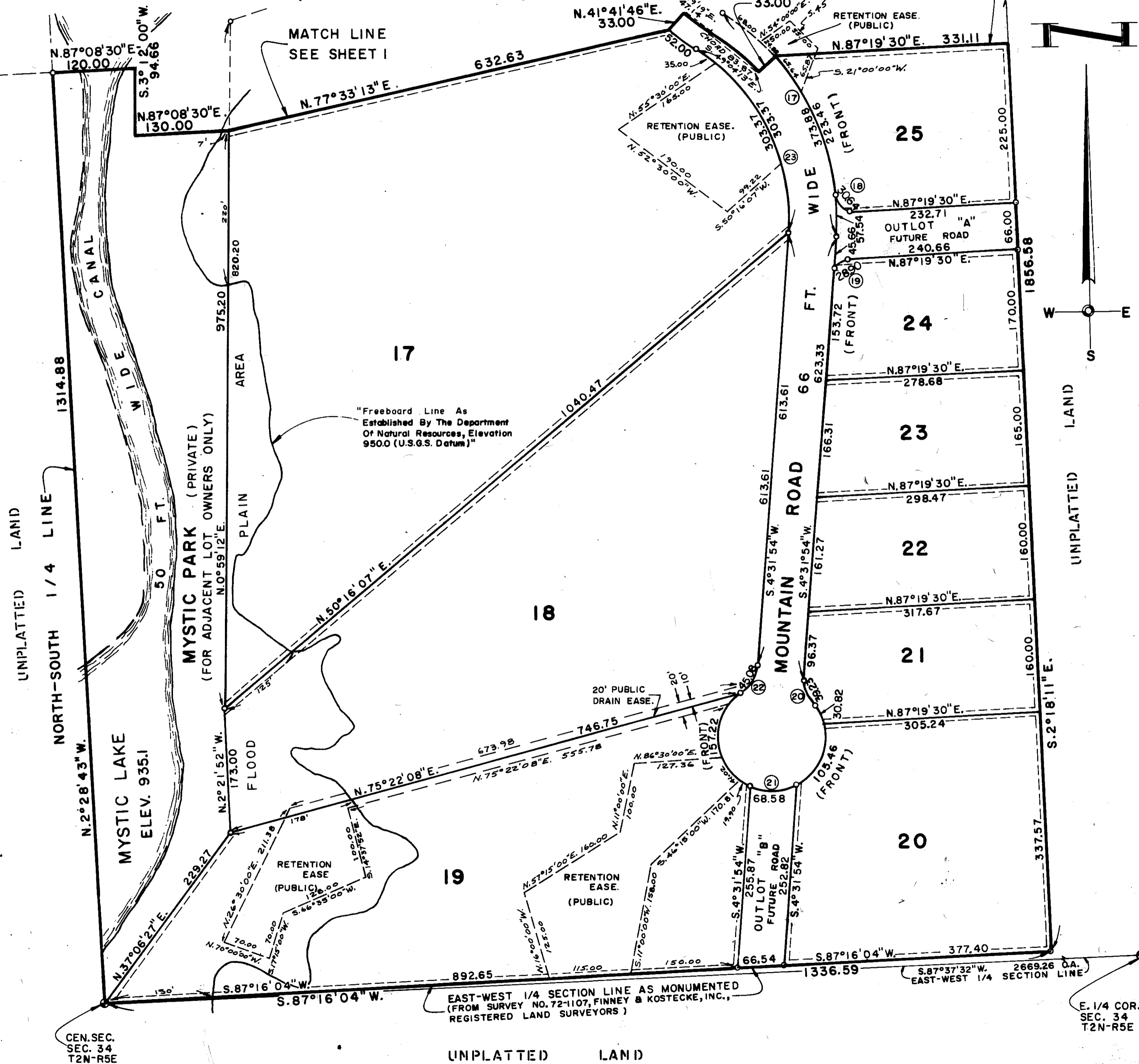
PLAT LEGEND

All dimensions are shown in feet.
All curvilinear dimensions are shown along the arc.
All bearings are in relation to "Forest View Estates No. 1" as recorded in Liber 14, Pages 7, 8 and 9, Livingston County Records.
The symbol "o" indicates a concrete monument.
All lot markers are 1/2 inch iron rods and are 18 inches in length.
— indicates a 6ft. private easement for public utilities.

This plat is subject to restrictions as required by Act 288 of 1967, as amended on certain lots with respect to the requirements of the Michigan Department of Natural Resources and/or the Michigan Department of Public Health, which are recorded in Liber 673, Page 185-193 INCL of records of this county.

CURVE DATA:

No	Delta	Tan.	Rad	Arc	Chord	Ch. Brg.
17	61°12'17"	207.01	350.00	373.88	356.35	N26°04'15"W
18	87°47'15"	19.24	20.00	30.64	27.73	N48°46'53"W
19	82°47'36"	17.63	20.00	28.90	26.45	S45°55'42"W
20	44°57'30"	20.69	50.00	39.23	36.23	N17°56'51"W
21	276°36'54"	—	75.00	362.08	99.77	S82°07'11"E
22	51°39'24"	2420	50.00	4508	4357	N30°21'34"E
23	61°12'17"	167.97	284.00	303.37	289.16	S26°04'14"E



EAST-WEST 1/4 SECTION LINE AS MONUMENTED
(FROM SURVEY NO. 72-1107, FINNEY & KOSTECKE, INC., REGISTERED LAND SURVEYORS)

E. 1/4 COR.
SEC. 34
T2N-R5E

UNPLATTED LAND