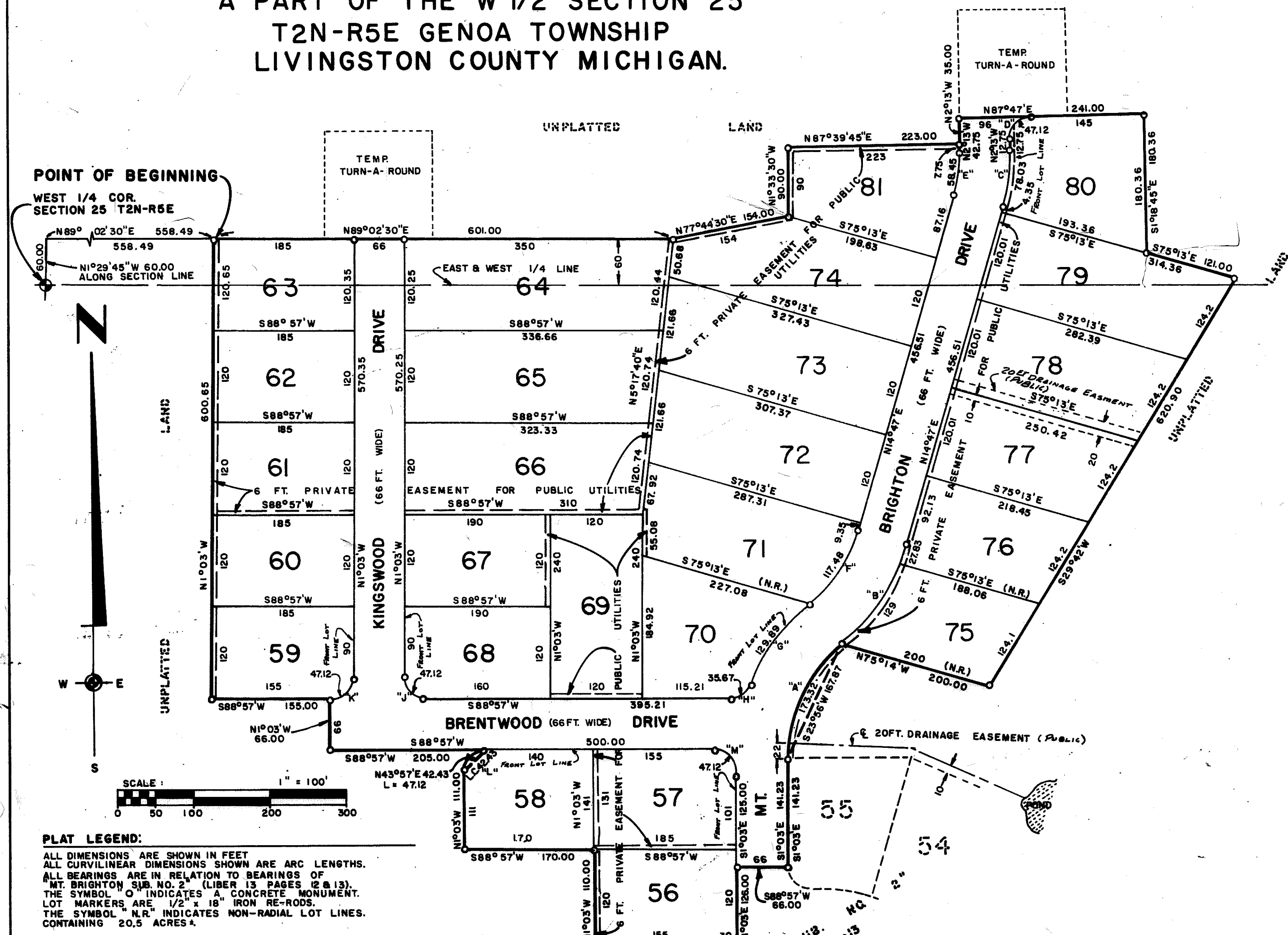


# "MT. BRIGHTON SUB. NO. 3"

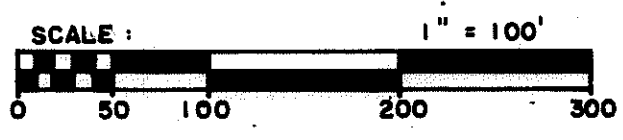
A PART OF THE W 1/2 SECTION 25  
T2N-R5E GENOA TOWNSHIP  
LIVINGSTON COUNTY MICHIGAN.



POINT OF BEGINNING

WEST 1/4 COR.  
SECTION 25 T2N-R5E

N89°02'30"E 558.49  
N1°29'45"W 60.00  
ALONG SECTION LINE



**PLAT LEGEND:**

ALL DIMENSIONS ARE SHOWN IN FEET  
ALL CURVILINEAR DIMENSIONS SHOWN ARE ARC LENGTHS.  
ALL BEARINGS ARE IN RELATION TO BEARINGS OF  
MT. BRIGHTON SUB. NO. 2 (LIBER 13 PAGES 12 & 13).  
THE SYMBOL 'O' INDICATES A CONCRETE MONUMENT.  
LOT MARKERS ARE 1/2" x 18" IRON RE-RODS.  
THE SYMBOL "N.R." INDICATES NON-RADIAL LOT LINES.  
CONTAINING 20.5 ACRES ±.

NO.	RADIUS	DELTA	ARC	CH. BEARING	CHORD
A	198.61	50°00'	173.32	S23°56'W	167.87
B	263.00	34°10'	156.83	N31°52'E	154.52
C	263.00	17°00'	78.03	N 6°17'E	77.75
D	30.00	90°00'	47.12	N42°47'E	42.43
E	197.00	17°00'	58.45	N 6°17'E	58.24
F	197.00	34°10'	117.48	N 31°52'E	115.74
G	264.61	28°07'30"	129.89	N34°53'15"E	128.59
H	30.00	68°07'30"	35.67	N54°53'15"E	33.61
J	30.00	90°00'	47.12	N46°03'W	42.43
K	30.00	90°00'	47.12	N 43°57'E	42.43
L	30.00	90°00'	47.12	N 43°57'E	42.43
M	30.00	90°00'	47.12	N 46°03'W	42.43
N	30.00	90°00'	47.12	N 46°03'W	42.43

LOCATION MAP  
SCALE: 1" = 2000'

