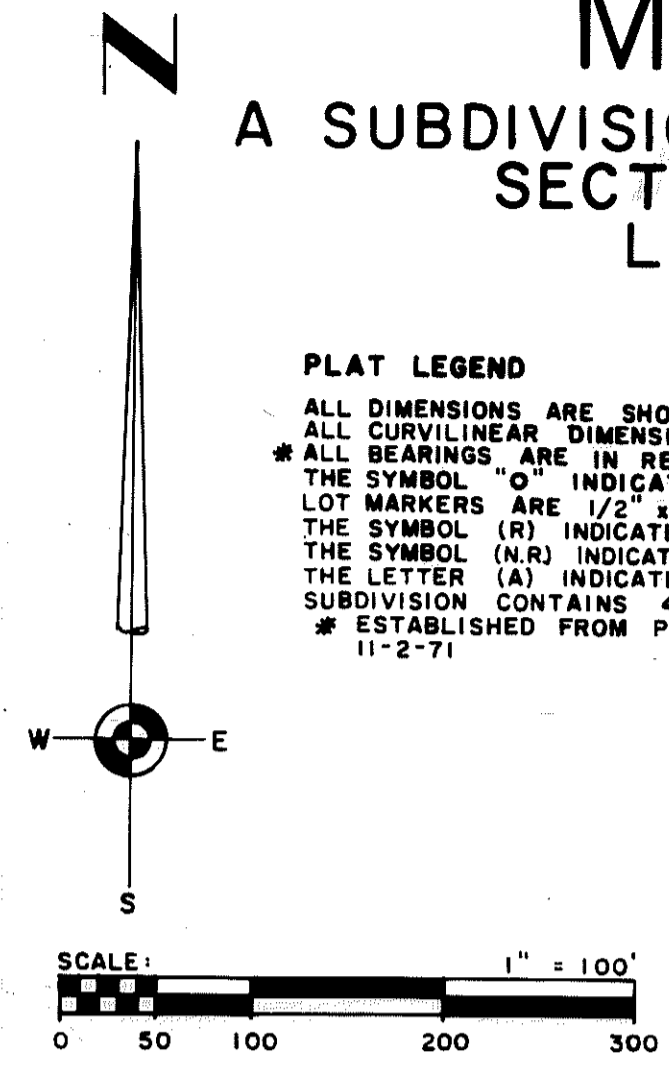


Letter	Radius	Delta	Arc	Ch. Bearing	Chord
A	30.00	90°00'	47.12	N 45°28'25"E	42.43
B	30.00	90°00'	47.12	S 44°31'35"E	42.43
C	266.93	27°59'57"	130.45	N 14°28'23"E	129.15
D	266.93	54°18'45"	253.04	N 27°37'47"E	243.67
DD	200.93	54°18'45"	190.47	N 27°37'47"E	183.42
E	216.98	42°44'	161.84	S 21°50'25"W	158.11
F	282.98	19°41'32"	97.26	N 10°19'11"E	96.78
G	282.98	42°44'	211.06	N 21°50'25"E	206.20
H	217.00	29°55'	113.31	S 28°14'55"W	112.02
I	283.00	29°55'	147.77	S 28°14'55"W	146.09
J	263.00	58°00'	266.23	N 42°17'25"E	255.01
K	197.00	58°00'	199.42	N 42°17'25"E	191.02
L	20.00	71°34'30"	24.98	S 10°50'20"E	23.39
M	20.00	86°38'48"	30.24	N 89°56'59"W	27.44
N	197.00	60°00'	206.30	S 41°17'25"W	197.00
O	263.00	60°00'	275.41	S 41°17'25"W	263.00
P	259.80	115°52'15"	525.40	N 69°13'33"E	440.33
Q	193.80	115°52'15"	391.92	N 69°13'33"E	328.47
R	20.00	90°00'	31.42	N 82°09'40"E	28.28
S	20.00	90°00'	31.42	N 7°50'20"W	28.28
T	263.00	51°52'15"	238.10	S 26°54'13"E	230.05
U	197.00	51°52'15"	178.35	S 26°54'13"E	172.32
V	20.00	90°00'	31.42	S 45°58'05"E	28.28
W	20.00	90°00'	31.42	S 44°01'55"W	28.28
X	30.00	90°00'	47.12	S 45°58'05"E	42.43
Y	263.00	34°14'45"	157.20	N 71°54'32"E	154.87
Z	197.00	34°14'45"	117.75	N 71°54'32"E	116.00

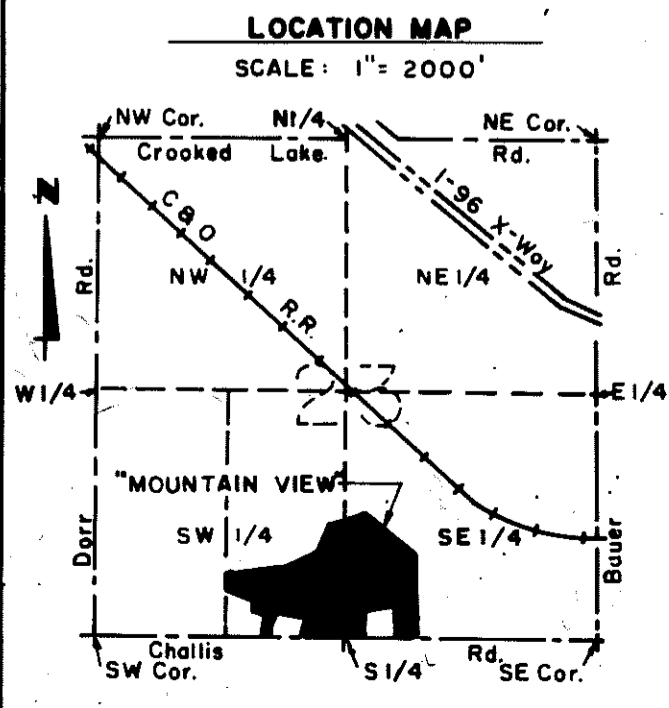
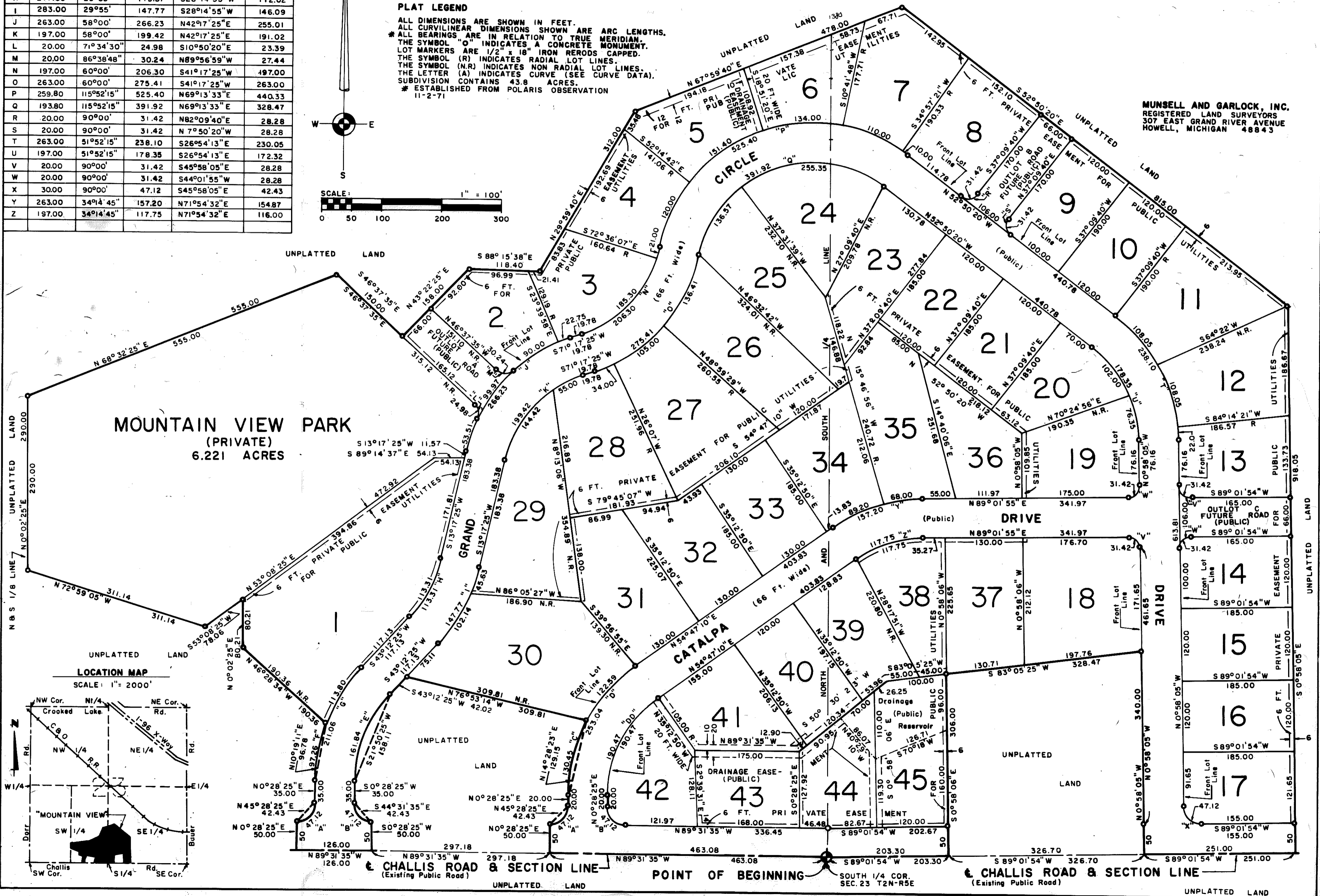
"MOUNTAIN VIEW"

A SUBDIVISION OF A PART OF THE SW 1/4 AND SE 1/4 SECTION 23 T2N-R5E GENOA TOWNSHIP LIVINGSTON COUNTY MICHIGAN

PLAT LEGEND
 ALL DIMENSIONS ARE SHOWN IN FEET.
 ALL CURVILINEAR DIMENSIONS SHOWN ARE ARC LENGTHS.
 * ALL BEARINGS ARE IN RELATION TO TRUE MERIDIAN.
 THE SYMBOL "O" INDICATES A CONCRETE MONUMENT.
 LOT MARKERS ARE 1/2" x 18" IRON RODS CAPPED.
 THE SYMBOL (R) INDICATES RADIAL LOT LINES.
 THE SYMBOL (N.R.) INDICATES NON RADIAL LOT LINES.
 THE LETTER (A) INDICATES CURVE (SEE CURVE DATA).
 SUBDIVISION CONTAINS 43.8 ACRES.
 * ESTABLISHED FROM POLARIS OBSERVATION 11-2-71



MUNSELL AND GARLOCK, INC.
 REGISTERED LAND SURVEYORS
 307 EAST GRAND RIVER AVENUE
 HOWELL, MICHIGAN 48843



CHALLIS ROAD & SECTION LINE (Existing Public Road) UNPLATTED LAND POINT OF BEGINNING SOUTH 1/4 COR. SEC. 23 T2N-R5E CHALLIS ROAD & SECTION LINE (Existing Public Road) UNPLATTED LAND