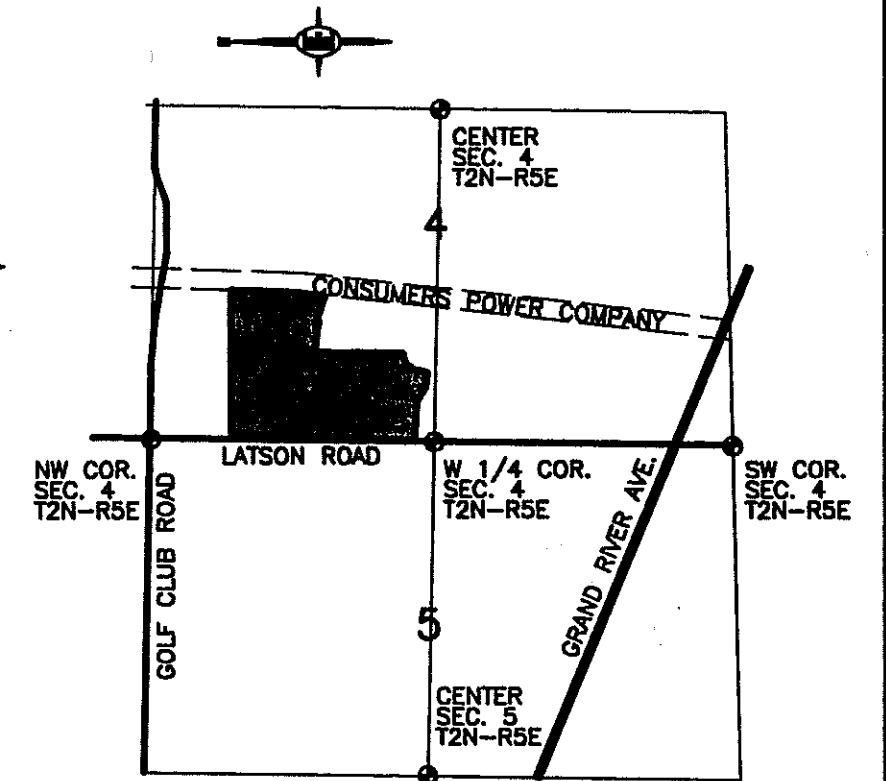
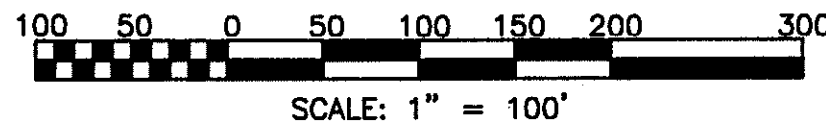


LAKEWOOD KNOLL NO. 3

A SUBDIVISION OF PART OF THE NW
FRACTIONAL 1/4 OF SECTION 4, T2N-R5E,
GENOA TOWNSHIP, LIVINGSTON COUNTY, MICHIGAN



LOCATION MAP
1" = 2000'

ALL DIMENSIONS ARE SHOWN IN FEET.

ALL CURVILINEAR DIMENSIONS ARE SHOWN ALONG THE ARC.

THE SYMBOL "O" INDICATES A CONCRETE MONUMENT, WHICH IS 4" IN DIAMETER X 36" LONG, ENCASING A 1/2" IRON ROD.

THE SYMBOL (R) DENOTES A RADIAL LOT LINE.

THE SYMBOL (NR) DENOTES A NON-RADIAL LOT LINE.

ALL LOT MARKERS ARE 1/2 INCH IRON RODS AND ARE 18 INCHES IN LENGTH. (NOT CAPPED)

BEARINGS WERE ESTABLISHED FROM THE RECORDED PLAT OF "LAKEWOOD KNOLL NO. 2" A SUBDIVISION AS RECORDED IN LIBER 35 OF PLATS, PAGES 20-21, LIVINGSTON COUNTY RECORDS.

ALL DIMENSIONS SHOWN IN *ITALICS* 32' ARE FROM THE WETLANDS TO THE TRAVERSE OR LOT LINE.

ALL DIMENSIONS SHOWN IN PARENTHESIS (20) ARE FROM THE FLOODPLAIN TO THE BOUNDARY OR LOT LINE.

THE SYMBOL © DENOTES A FOUND CONCRETE MONUMENT, WHICH IS 4" IN DIAMETER X 36" LONG, ENCASING A 1/2" IRON ROD.

NOTE:

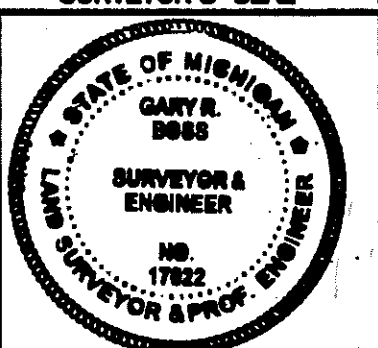
USE OF THE WORD "PRIVATE" DOES NOT LIMIT IN ANY WAY THE SCOPE OF THE EASEMENT GRANTED TO THE LIVINGSTON COUNTY DRAIN COMMISSIONER.

ALL DRAIN EASEMENTS AND RETENTION AREAS ARE UNDER THE JURISDICTION OF THE LIVINGSTON COUNTY DRAIN COMMISSIONER.

PREPARED AND DRAFTED BY:
BOSS ENGINEERING COMPANY
3121 EAST GRAND RIVER
HOWELL, MICHIGAN 48843

Gary R. Boss
GARY R. BOSS

SURVEYOR'S SEAL



UNPLATTED

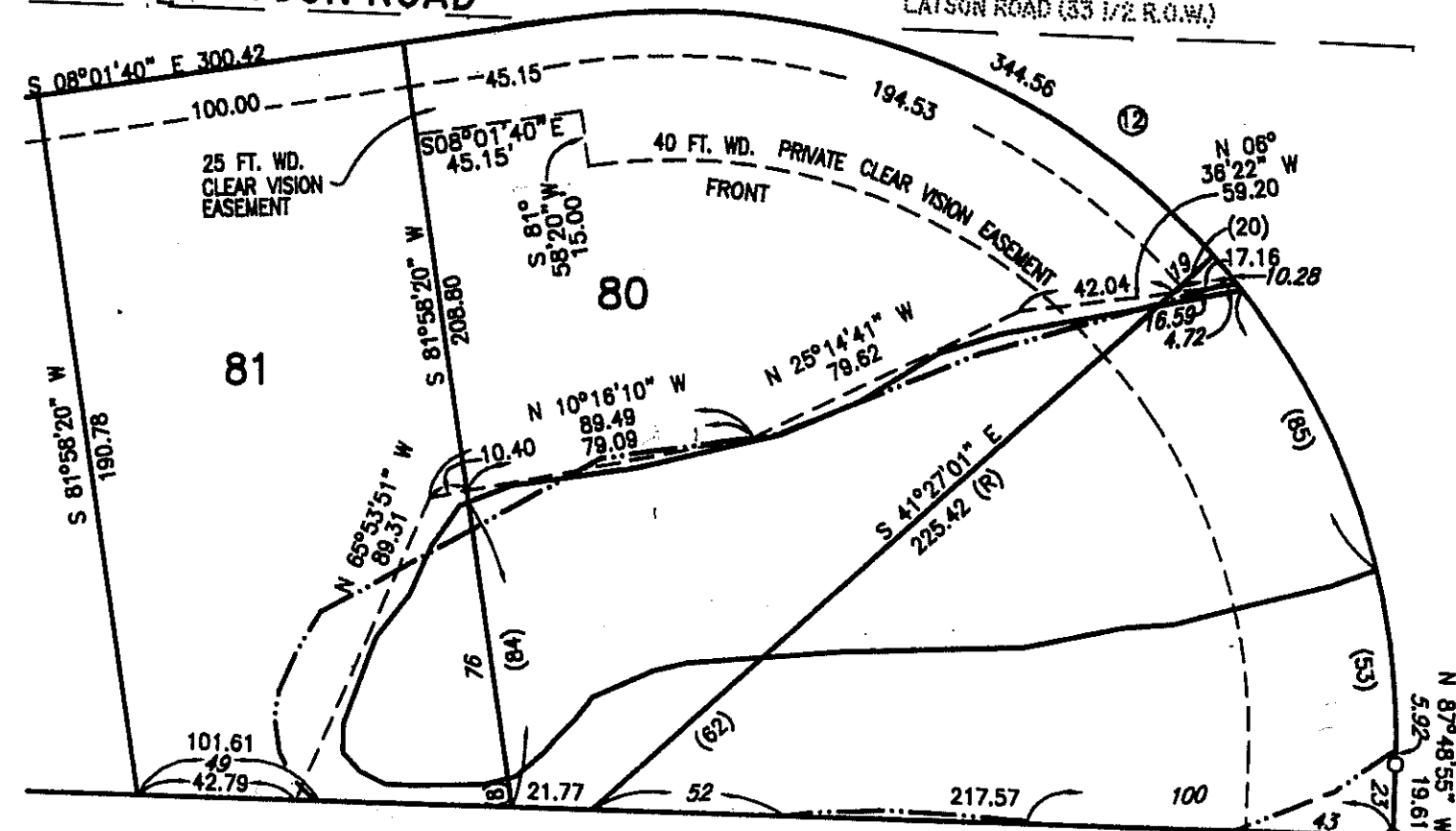
UNPLATTED

LATSON ROAD (33 1/2 R.O.W.)
N 02°11'05" E 1064.00'
NW COR. SEC. 4
T2N-R5E
LAND SURVEY
CORNER # 1627

LATSON ROAD (60 FT. WD. 1/2 RIGHT-OF-WAY)
N 02°11'05" E 1658.29'

LATSON ROAD

CURVE DATA					
CURVE	RADIUS	CENTRAL ANGLE	ARC LENGTH	CHORD LENGTH	BEARING DIRECTION
7	75.00	276°47'19"	362.32	99.60	N 00°13'50" W
8	50.00	48°23'40"	42.23	40.99	N 65°34'20" E
9	50.00	48°23'40"	42.23	40.99	N 66°02'00" W
10	197.00	97°47'50"	336.26	296.90	S 40°52'15" W
11	263.00	97°47'50"	448.91	396.37	S 40°52'15" W
12	197.00	100°12'45"	344.56	302.29	N 42°04'43" E
13	263.00	100°12'45"	460.00	403.57	N 42°04'43" E
14	263.00	14°59'22"	68.80	68.61	N 74°28'39" E
15	197.00	14°59'22"	51.54	51.39	N 74°28'39" E
16	693.00	27°40'03"	334.64	331.40	S 80°48'59" W
17	627.00	27°40'03"	302.77	299.84	S 80°48'59" W



DETAIL #1
SCALE 1" = 200'

CERTIFIED TRUE COPY OF
RECORDED PLAT
BY DEPARTMENT OF CONSUMER
AND INDUSTRY SERVICES

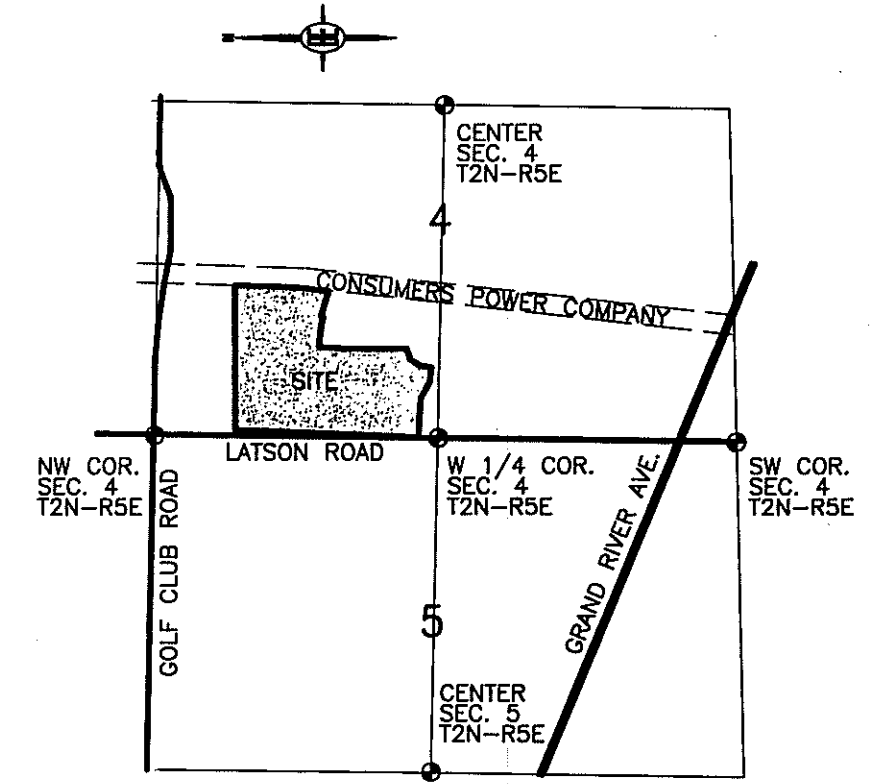
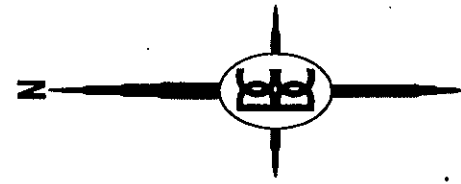
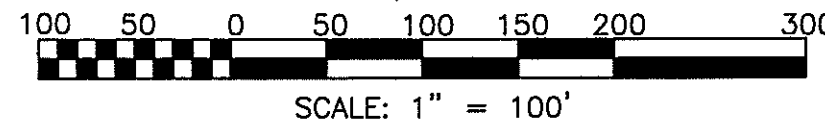
BY Maynard R. Dyer, P.S.
MAYNARD R. DYER, P.S.
MANAGER
SUBDIVISION CONTROL SECTION

DATE 11-17-98

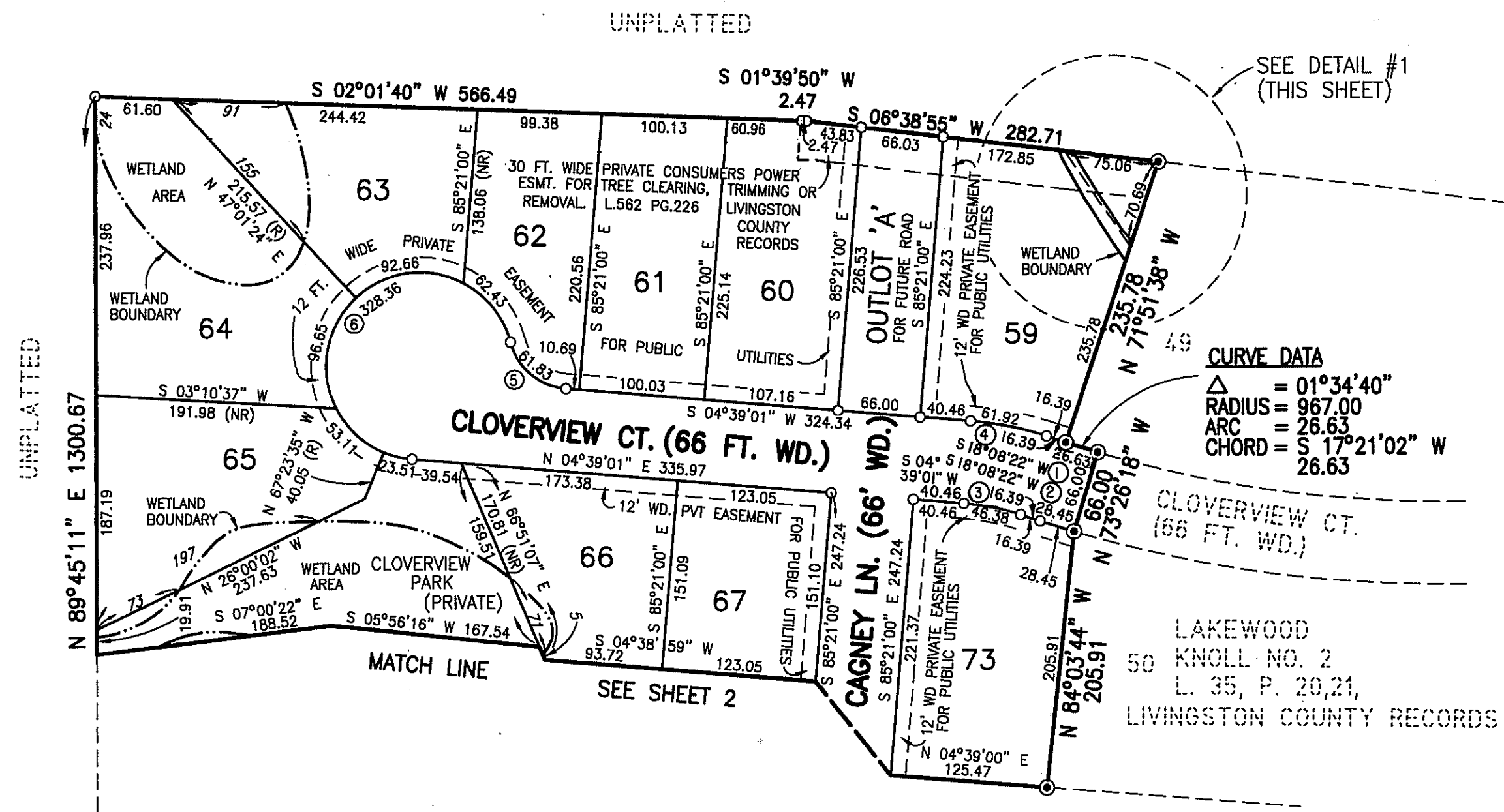
LAKWOOD KNOLL NO. 3

A SUBDIVISION OF PART OF THE NW
FRACTIONAL 1/4 OF SECTION 4, T2N-R5E,
GENOA TOWNSHIP, LIVINGSTON COUNTY, MICHIGAN

SHEET 1 OF 4 SHEETS



LOCATION MAP
1" = 2000'



CURVE DATA

△	= 01°34'40"
RADIUS	= 967.00
ARC	= 26.63
CHORD	= S 17°21'02" W 26.63

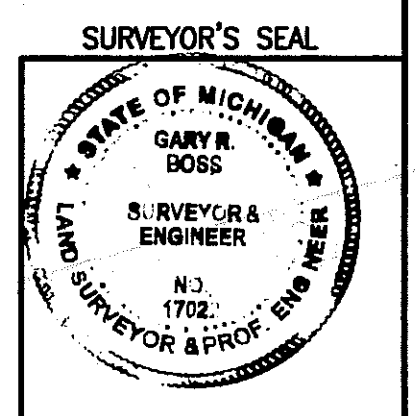
LEGEND

- ALL DIMENSIONS ARE SHOWN IN FEET.
- ALL CURVILINEAR DIMENSIONS ARE SHOWN ALONG THE ARC.
- THE SYMBOL "O" INDICATES A CONCRETE MONUMENT, WHICH IS 4" IN DIAMETER X 36" LONG, ENCASING A 1/2" IRON ROD.
- THE SYMBOL (R) DENOTES A RADIAL LOT LINE.
- THE SYMBOL (NR) DENOTES A NON-RADIAL LOT LINE.
- ALL LOT MARKERS ARE 1/2 INCH IRON RODS AND ARE 18 INCHES IN LENGTH. (NOT CAPPED)
- BEARINGS WERE ESTABLISHED FROM THE RECORDED PLAT OF "LAKWOOD KNOLL NO. 2" A SUBDIVISION AS RECORDED IN LIBER 35 OF PLATS, PAGES 20-21, LIVINGSTON COUNTY RECORDS.
- ALL DIMENSIONS SHOWN IN *ITALICS* 3/2' ARE FROM THE WETLANDS TO THE TRAVERSE OR LOT LINE.
- ALL DIMENSIONS SHOWN IN PARENTHESES (20) ARE FROM THE FLOODPLAIN TO THE BOUNDARY OR LOT LINE.
- THE SYMBOL ⊙ DENOTES A FOUND CONCRETE MONUMENT, WHICH IS 4" IN DIAMETER X 36" LONG, ENCASING A 1/2" IRON ROD.

NOTE:
USE OF THE WORD "PRIVATE" DOES NOT LIMIT IN ANY WAY THE SCOPE OF THE EASEMENT GRANTED TO THE LIVINGSTON COUNTY DRAIN COMMISSIONER.
ALL DRAIN EASEMENTS AND RETENTION AREAS ARE UNDER THE JURISDICTION OF THE LIVINGSTON COUNTY DRAIN COMMISSIONER.

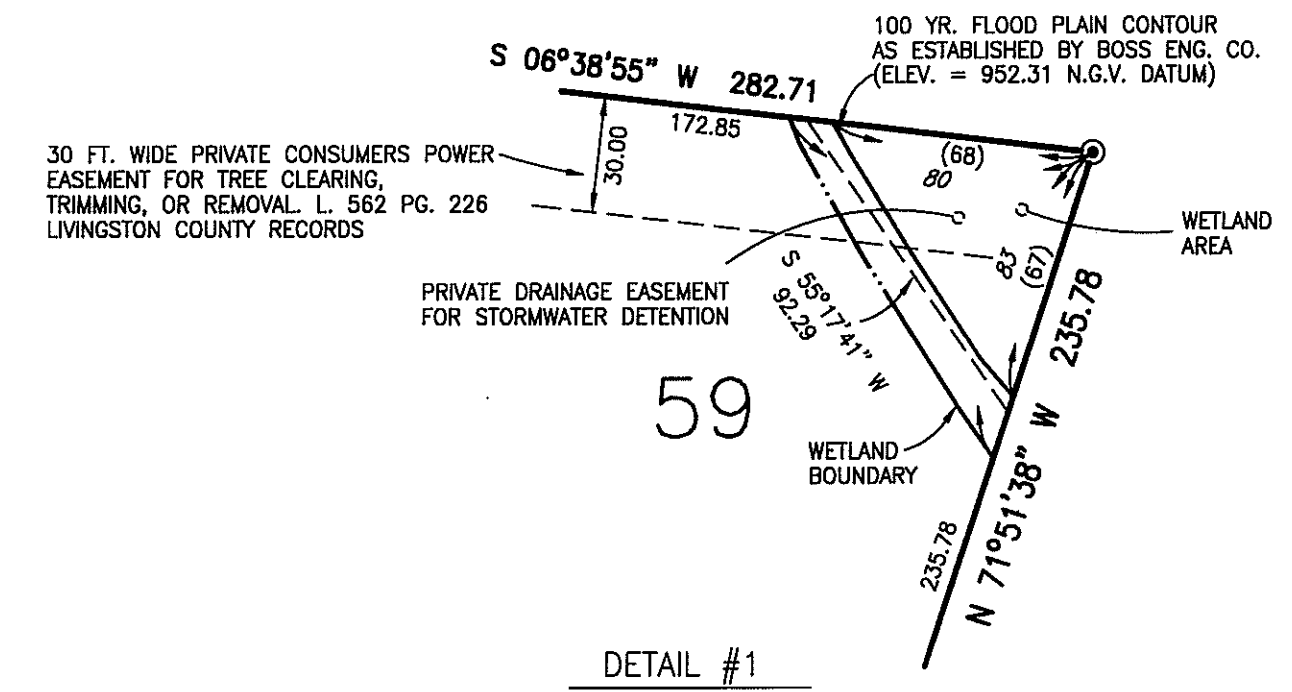
PREPARED AND DRAFTED BY:
BOSS ENGINEERING COMPANY
3121 EAST GRAND RIVER
HOWELL, MICHIGAN 48843

Gary R. Boss
GARY R. BOSS



CURVE DATA

CURVE	RADIUS	CENTRAL ANGLE	ARC LENGTH	CHORD LENGTH	BEARING DIRECTION
1	967.00	1°34'40"	26.63	26.63	S 17°21'02" W
2	1033.00	1°34'40"	28.45	28.45	S 17°21'02" W
3	197.00	13°29'22"	46.38	46.27	N 11°23'41" E
4	263.00	13°29'22"	61.92	61.78	N 11°23'41" E
5	50.00	70°51'09"	61.83	57.97	S 40°04'35" W
6	75.00	250°50'58"	328.36	122.23	N 49°55'19" W



DETAIL #1
SCALE: 1" = 50'

