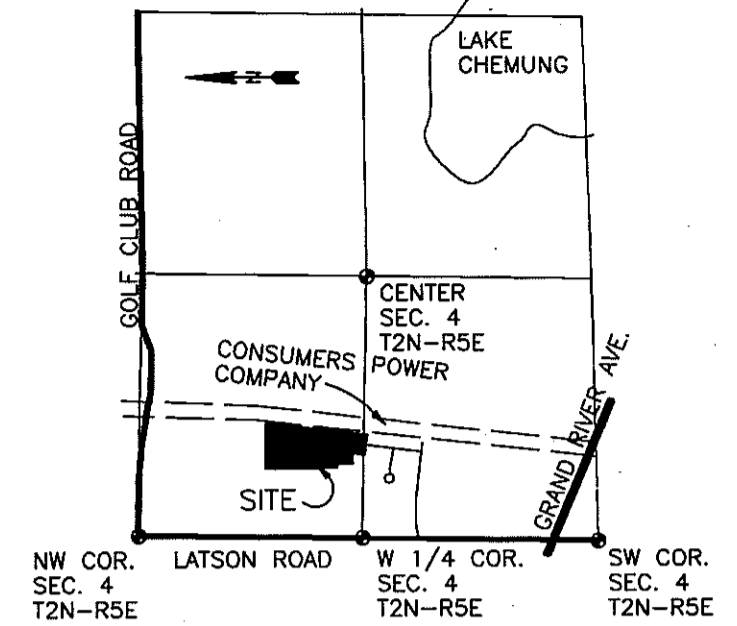
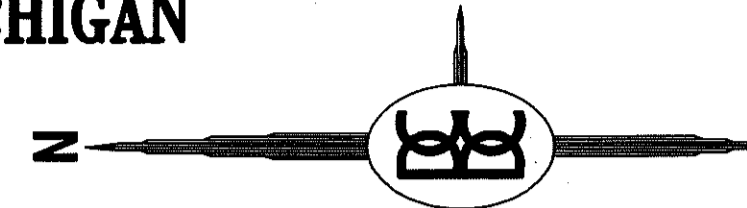
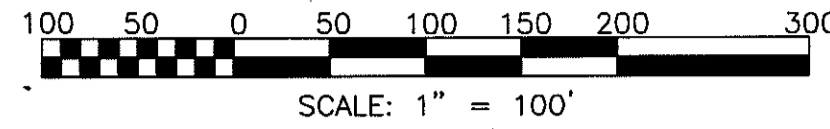


# LAKEWOOD KNOLL NO. 2

## A SUBDIVISION OF PART OF THE NW FRACTIONAL 1/4 AND THE SW 1/4 OF SECTION 4, T2N-R5E, GENOA TOWNSHIP, LIVINGSTON COUNTY, MICHIGAN



**LOCATION MAP**  
1" = 2000'

**LEGEND:**

ALL DIMENSIONS ARE SHOWN IN FEET.

ALL CURVILINEAR DIMENSIONS ARE SHOWN ALONG THE ARC.

THE SYMBOL "O" INDICATES A CONCRETE MONUMENT, WHICH IS 4" IN DIAMETER X 36" LONG, ENCASING A 1/2" IRON ROD.

THE SYMBOL (R) DENOTES A RADIAL LOT LINE.

ALL LOT MARKERS ARE 1/2 INCH IRON RODS AND ARE 18 INCHES IN LENGTH. (NOT CAPPED)

BEARINGS WERE ESTABLISHED FROM MICHIGAN DEPARTMENT OF TRANSPORTATION RIGHT-OF-WAY MAP FILE NO. 47-R-2 FOR I-96 B.L., PROJECT NO. 47-15, SHEET NO. 50.

ALL DIMENSIONS SHOWN IN *ITALICS* 3/2' ARE FROM THE WETLANDS TO THE TRAVERSE OR LOT LINE.

ALL DIMENSIONS SHOWN IN PARENTHESIS (20') ARE FROM THE FLOODPLAIN TO THE BOUNDARY OR LOT LINE.

THE SYMBOL © DENOTES A FOUND CONCRETE MONUMENT

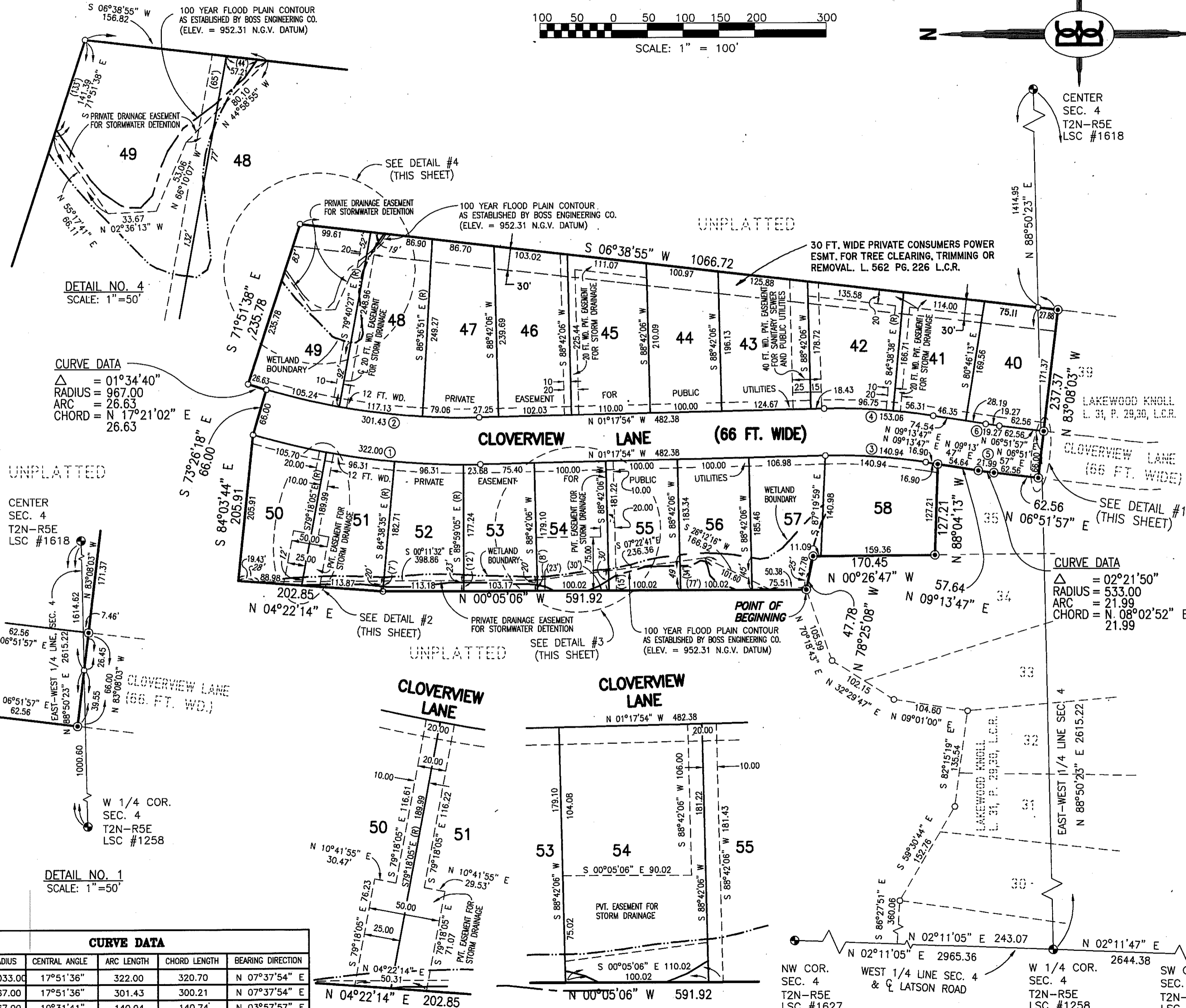
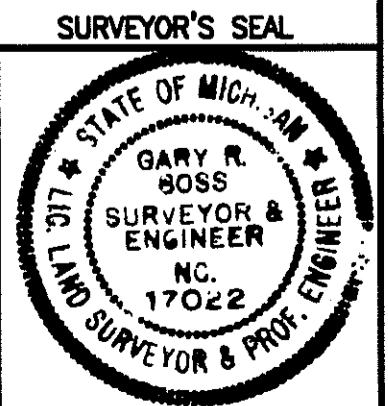
**NOTE:**

USE OF THE WORD "PRIVATE" DOES NOT LIMIT IN ANY WAY THE SCOPE OF THE EASEMENT GRANTED TO THE LIVINGSTON COUNTY DRAIN COMMISSIONER.

ALL DRAIN EASEMENTS AND RETENTION AREAS ARE UNDER THE JURISDICTION OF THE LIVINGSTON COUNTY DRAIN COMMISSIONER.

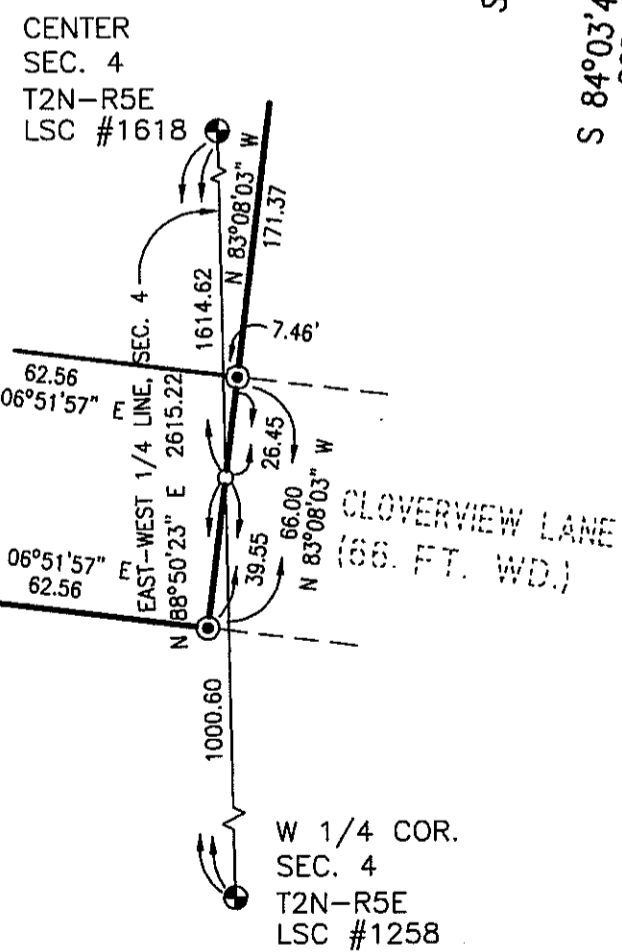
**PREPARED AND DRAFTED BY:**  
BOSS ENGINEERING COMPANY  
3121 EAST GRAND RIVER  
HOWELL, MICHIGAN 48843

*Gary R. Boss*  
GARY R. BOSS

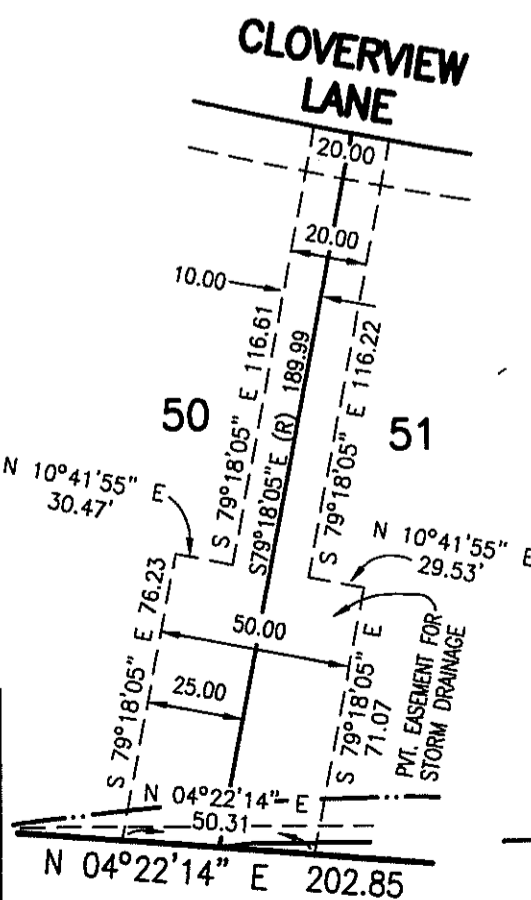


**CURVE DATA**  
△ = 01°34'40"  
RADIUS = 967.00  
ARC = 26.63  
CHORD = N 17°21'02" E 26.63

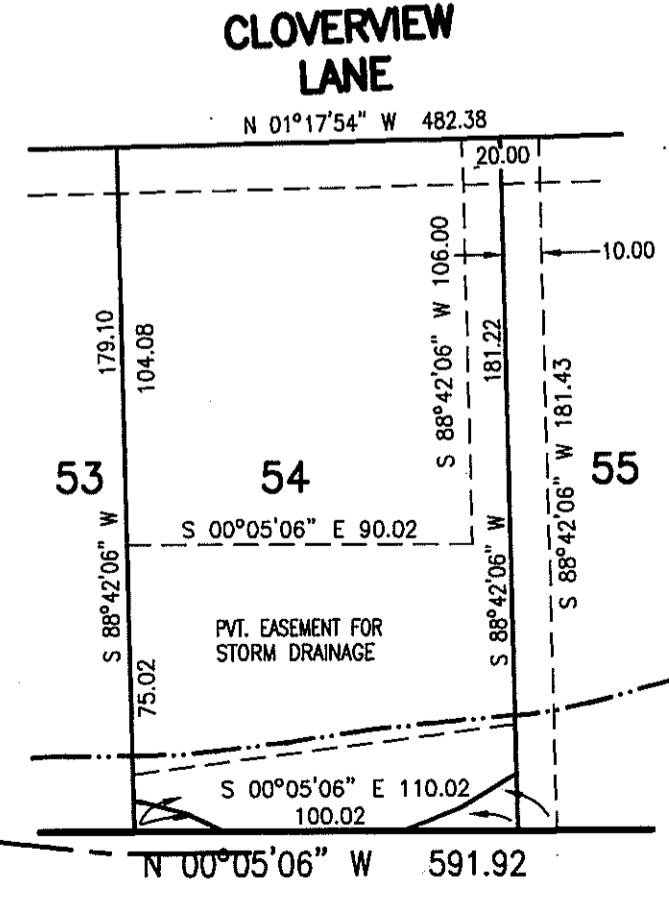
**CURVE DATA**  
△ = 02°21'50"  
RADIUS = 533.00  
ARC = 21.99  
CHORD = N 08°02'52" E 21.99



**DETAIL NO. 1**  
SCALE: 1" = 50'



**DETAIL NO. 2**  
SCALE: 1" = 50'



**DETAIL NO. 3**  
SCALE: 1" = 50'

CURVE DATA					
CURVE	RADIUS	CENTRAL ANGLE	ARC LENGTH	CHORD LENGTH	BEARING DIRECTION
1	1033.00	17°51'36"	322.00	320.70	N 07°37'54" E
2	967.00	17°51'36"	301.43	300.21	N 07°37'54" E
3	767.00	10°31'41"	140.94	140.74	N 03°57'57" E
4	833.00	10°31'41"	153.06	152.85	N 03°57'57" E
5	533.00	02°21'50"	21.99	21.99	N 08°02'52" E
6	467.00	02°21'50"	19.27	19.27	N 08°02'52" E