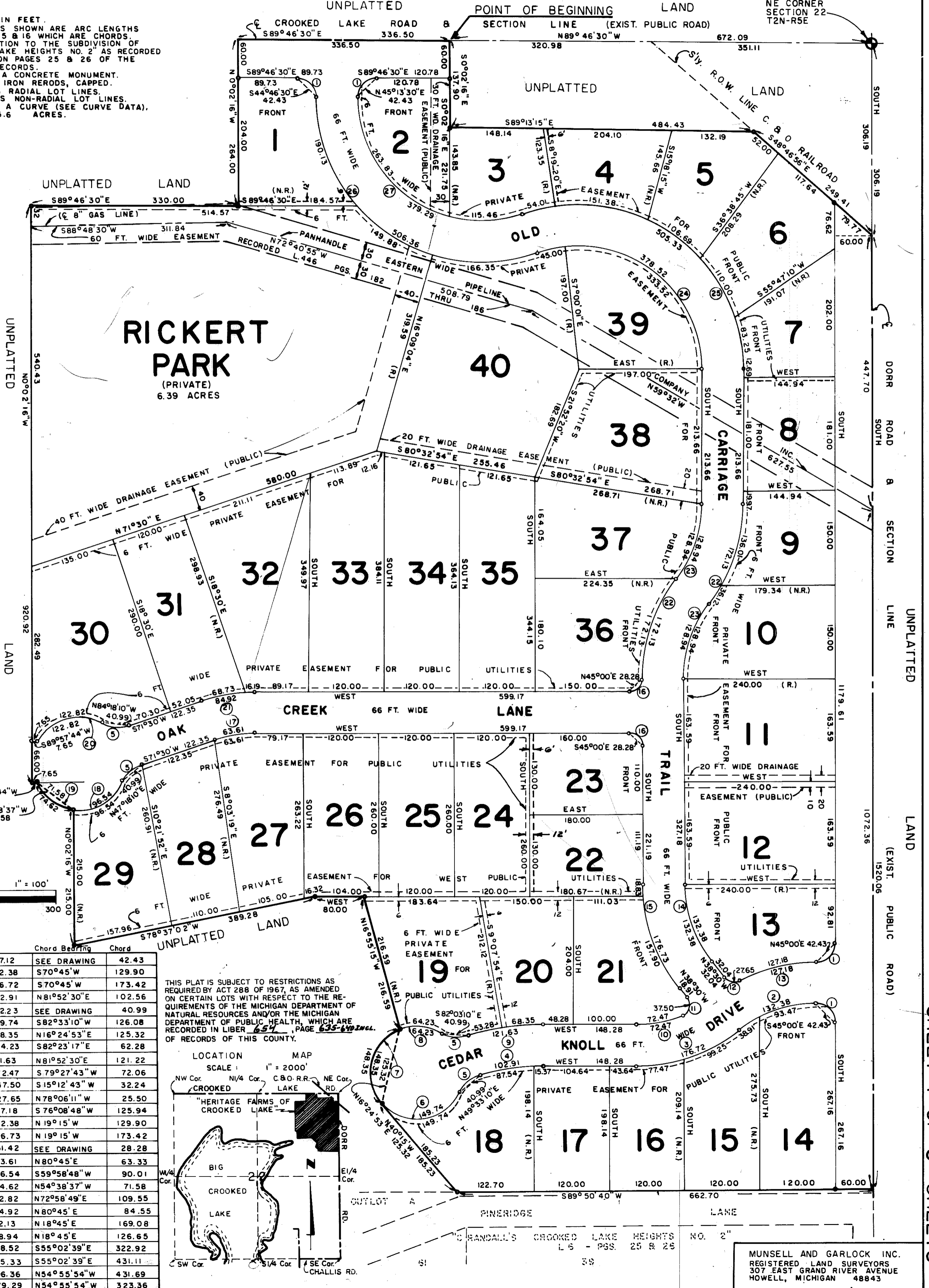


# "HERITAGE FARMS OF CROOKED LAKE"

A SUBDIVISION OF PART OF THE NE 1/4 SECTION 22  
T2N-R5E GENOA TOWNSHIP LIVINGSTON COUNTY MICHIGAN.

**PLAT LEGEND:**

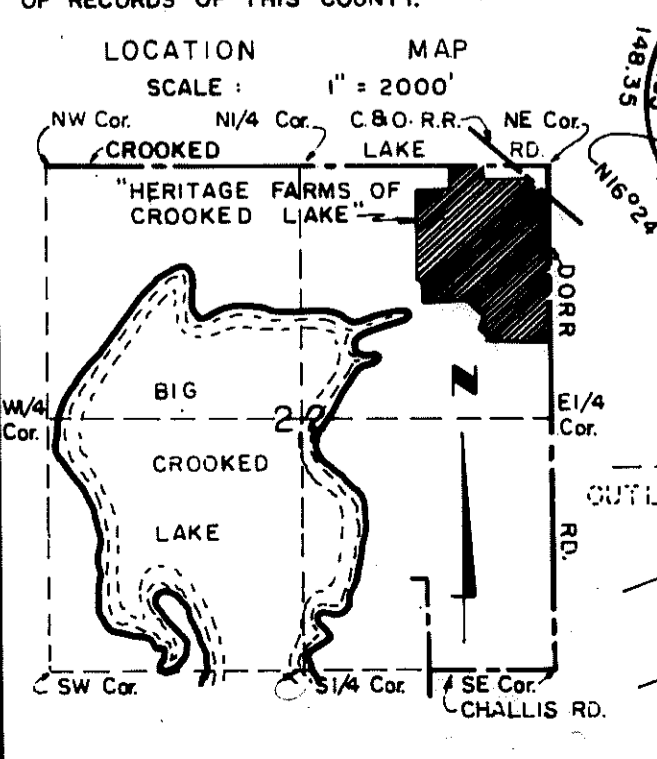
ALL DIMENSIONS ARE SHOWN IN FEET.  
ALL CURVILINEAR DIMENSIONS SHOWN ARE ARC LENGTHS EXCEPT FOR CURVES 1, 5 & 16 WHICH ARE CHORDS.  
ALL BEARINGS ARE IN RELATION TO THE SUBDIVISION OF CRANDALL'S CROOKED LAKE HEIGHTS NO. 2 AS RECORDED IN LIBER 6 OF PLATS ON PAGES 25 & 26 OF THE LIVINGSTON COUNTY RECORDS.  
THE SYMBOL "O" INDICATES A CONCRETE MONUMENT.  
LOT MARKERS ARE 1/2" X 18" IRON RODS, CAPPED.  
THE SYMBOL (R.) INDICATES RADIAL LOT LINES.  
THE SYMBOL (N.R.) INDICATES NON-RADIAL LOT LINES.  
THE NUMBER (C) INDICATES A CURVE (SEE CURVE DATA).  
SUBDIVISION CONTAINS 45.6 ACRES.



**CURVE DATA**

No.	Radius	Delta	Arc	Chord Bearing	Chord
1	30.00	90°00'	47.12	SEE DRAWING	42.43
2	197.00	38°30'	132.38	S70°45'W	129.90
3	263.00	38°30'	176.72	S70°45'W	173.42
4	362.84	16°15'	102.91	N81°52'30"E	102.56
5	50.00	48°23'40"	42.23	SEE DRAWING	40.99
6	75.00	114°23'40"	149.74	S82°33'10"W	126.08
7	75.00	113°19'46"	148.35	N16°24'53"E	125.32
8	75.00	49°03'55"	64.23	S82°23'17"E	62.28
9	428.84	16°15'	121.63	N81°52'30"E	121.22
10	197.00	21°04'35"	72.47	S79°27'43"W	72.06
11	20.00	107°25'25"	37.50	S15°12'43"W	32.24
12	20.00	79°12'21"	27.65	N78°06'11"W	25.50
13	263.00	27°42'24"	127.18	S76°08'48"W	125.94
14	197.00	38°30'	132.38	N19°15'W	129.90
15	263.00	38°30'	176.73	N19°15'W	173.42
16	20.00	90°00'	31.42	SEE DRAWING	28.28
17	197.00	18°30'	63.61	N80°45'E	63.33
18	75.00	73°44'55"	96.54	S59°58'48"W	90.01
19	75.00	57°00'14"	74.62	N54°38'37"W	71.58
20	75.00	93°49'42"	122.82	N72°58'49"E	109.55
21	263.00	18°30'	84.92	N80°45'E	84.55
22	263.00	37°30'	172.13	N18°45'E	169.08
23	197.00	37°30'	128.94	N18°45'E	126.65
24	197.00	110°05'18"	378.52	S55°02'39"E	322.92
25	263.00	110°05'18"	505.33	S55°02'39"E	431.11
26	263.00	110°18'47"	506.36	N54°55'54"W	431.69
27	197.00	110°18'47"	379.29	N54°55'54"W	323.36

THIS PLAT IS SUBJECT TO RESTRICTIONS AS REQUIRED BY ACT 288 OF 1967, AS AMENDED ON CERTAIN LOTS WITH RESPECT TO THE REQUIREMENTS OF THE MICHIGAN DEPARTMENT OF NATURAL RESOURCES AND/OR THE MICHIGAN DEPARTMENT OF PUBLIC HEALTH, WHICH ARE RECORDED IN LIBER 654, PAGE 635-640 INCL. OF RECORDS OF THIS COUNTY.



MUNSELL AND GARLOCK INC.  
REGISTERED LAND SURVEYORS  
307 EAST GRAND RIVER AVENUE  
HOWELL, MICHIGAN 48843