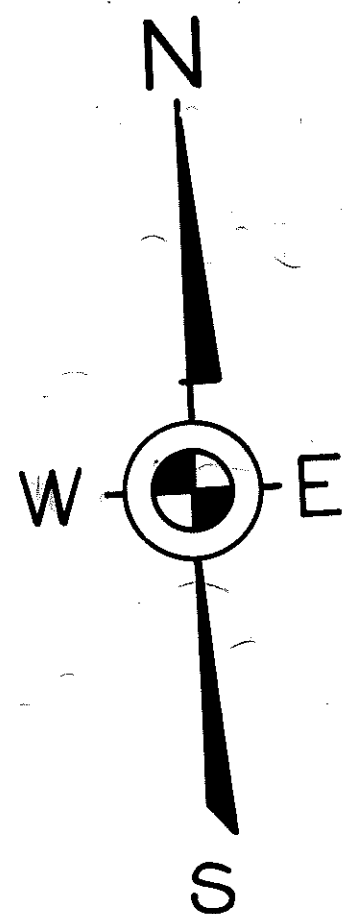


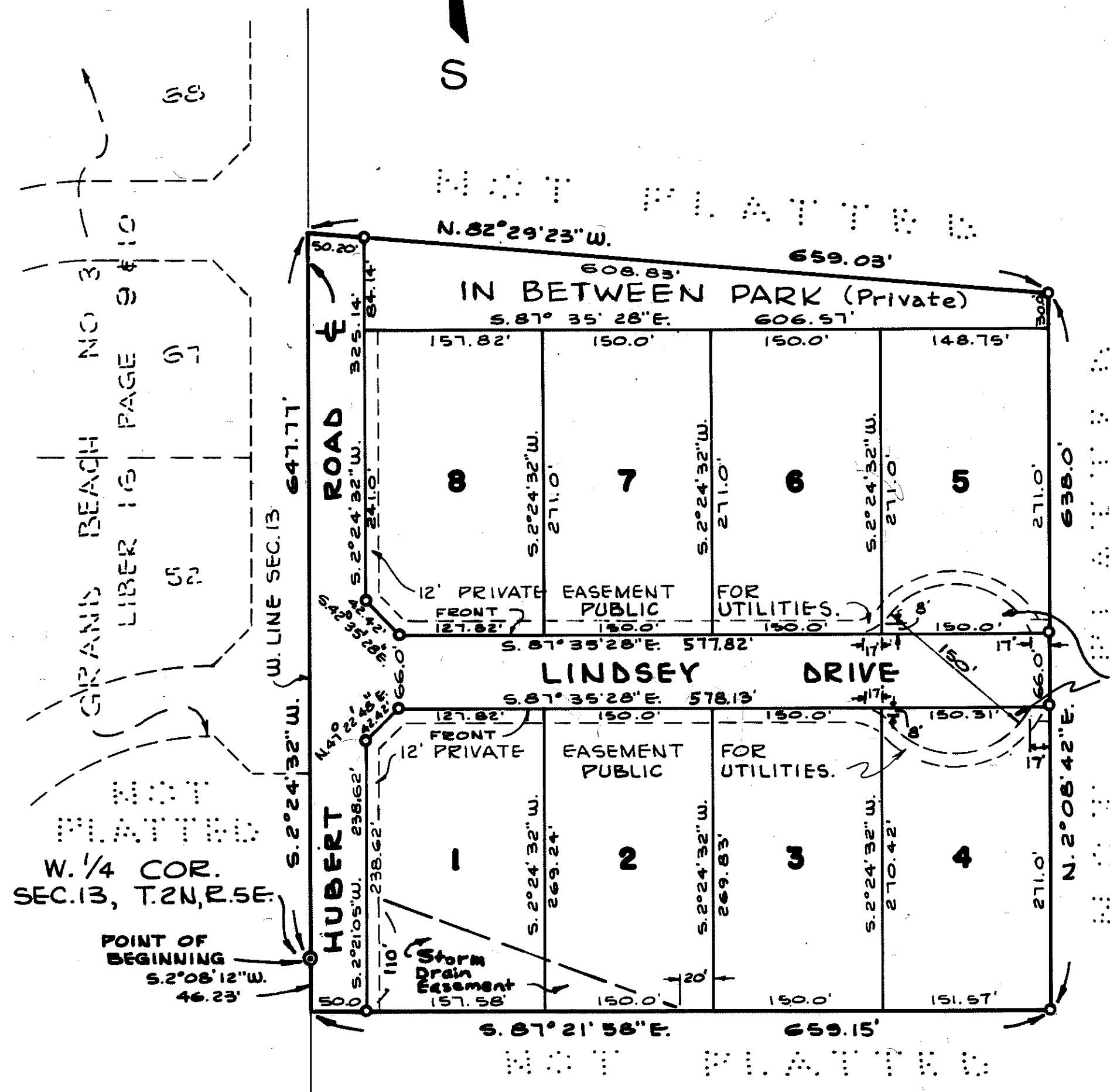
HERBST ESTATES

A SUBDIVISION OF PART OF THE NW 1/4 AND SW 1/4 OF SEC. 13, T.2 N., R.5 E., GENOA TOWNSHIP, LIVINGSTON COUNTY, MICHIGAN.

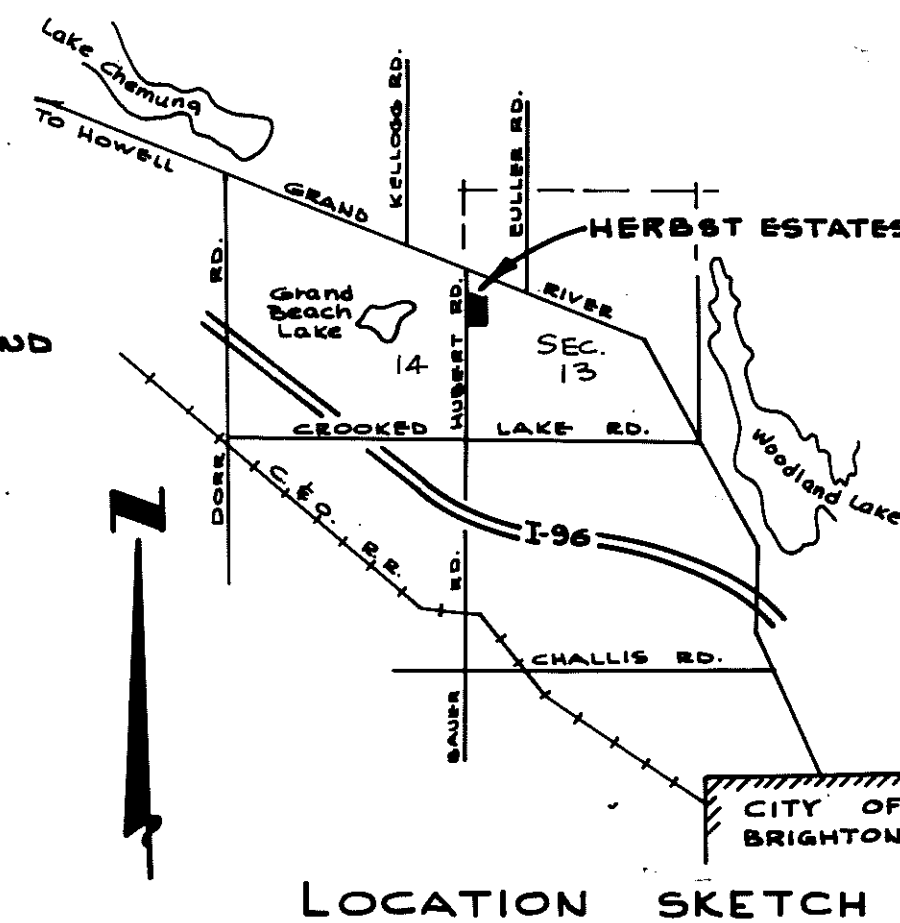


PLAT LEGEND

ALL DIMENSIONS ARE SHOWN IN FEET.
 ALL CURVILINEAR DIMENSIONS ARE SHOWN ALONG THE ARC.
 THE SYMBOL "o" INDICATES A CONCRETE MONUMENT.
 ALL LOT MARKERS ARE 1/2" IRON RODS, 18" LONG.
 ALL BEARINGS ARE RELATED TO THE BEARING SHOWN FOR THE E'LY LINE OF GRAND BEACH NO. 3 SUB'N. (LIBER 16, PAGES 9&10, LIVINGSTON COUNTY RECORDS.)



CERTIFIED TRUE COPY OF RECORDED PLAT
Loren E. Monroe
 LOREN E. MONROE
 STATE TREASURER
Richard E. Lomas
 Richard E. Lomas, Plat Examiner
 Date March 26, 1979



PREPARED AND DRAFTED BY:
HERBERT L. MUNZEL
 REG. PROF. ENGINEER #9244
 222 WEST GRAND RIVER
 BRIGHTON, MICHIGAN 48116

