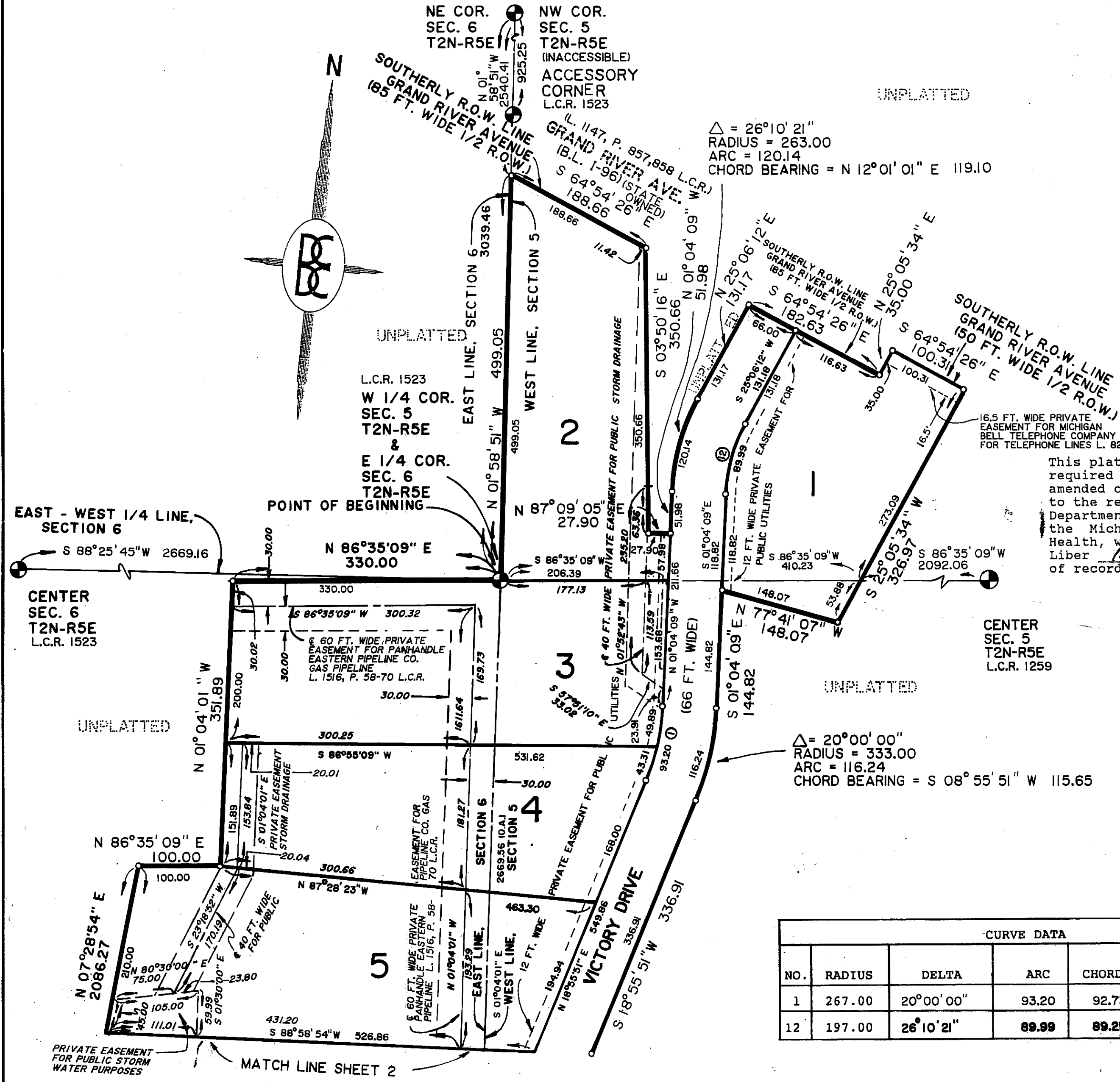
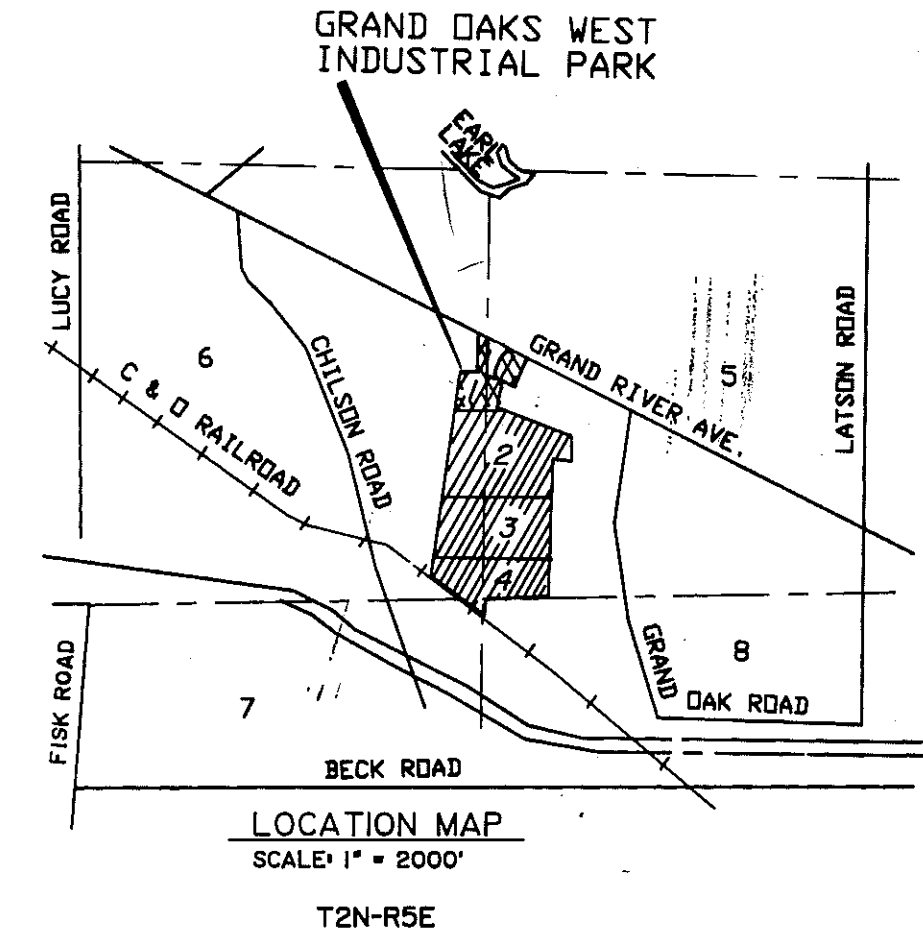
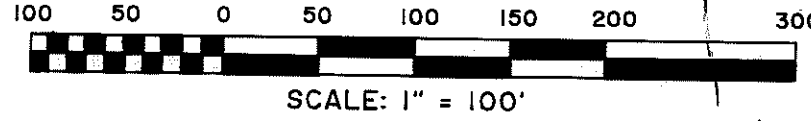


"GRAND OAKS WEST INDUSTRIAL PARK"

AN INDUSTRIAL SUBDIVISION OF PART OF THE NW 1/4 SECTION 5,
SW 1/4 SECTION 5, SE 1/4 SECTION 6, AND NE 1/4 SECTION 7,
T2N-R5E, GENOA TOWNSHIP, LIVINGSTON COUNTY, MICHIGAN



This plat is subject to restrictions required by Act 288 of 1967, as amended on certain lots with respect to the requirements of the Michigan Department of Natural Resources and/or the Michigan Department of Public Health, which are recorded in Liber 1542, pages 420-423, of records of this County.

CERTIFIED TRUE COPY OF
RECORDED PLAT
BY DEPARTMENT OF COMMERCE
Richard E. Lomas
Richard E. Lomas, L.S.
Manager, Plat Section

Date 4-1-92

Legend:
All dimensions are shown in feet.
All curvilinear dimensions are shown along the arc.
The symbol "o" indicates a concrete monument, which is 4" in diameter x 36" long, encasing a 1/2" iron rod.
All lot markers are 1/2 inch iron rods and are 18 inches in length.
(R) Denotes a radial line

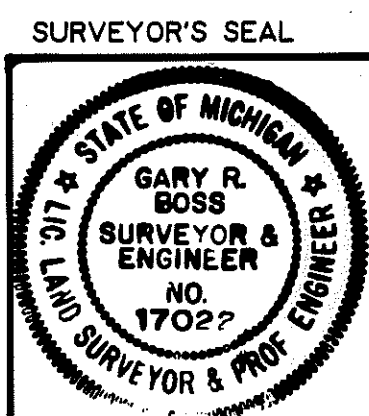
Bearings were established by the Plat of "Grand Oaks Commercial Park" Subdivision as recorded in Liber 21 of Plats, Pages 45-47 Livingston County Records. South Line of Section 5 held.

Note:
All drain easements and detention areas are under the jurisdiction of the Livingston County Drain Commission.

PREPARED AND DRAFTED BY:
Boss Engineering Company
3121 East Grand River
Howell, Michigan 48843

Gary R. Boss
Gary R. Boss

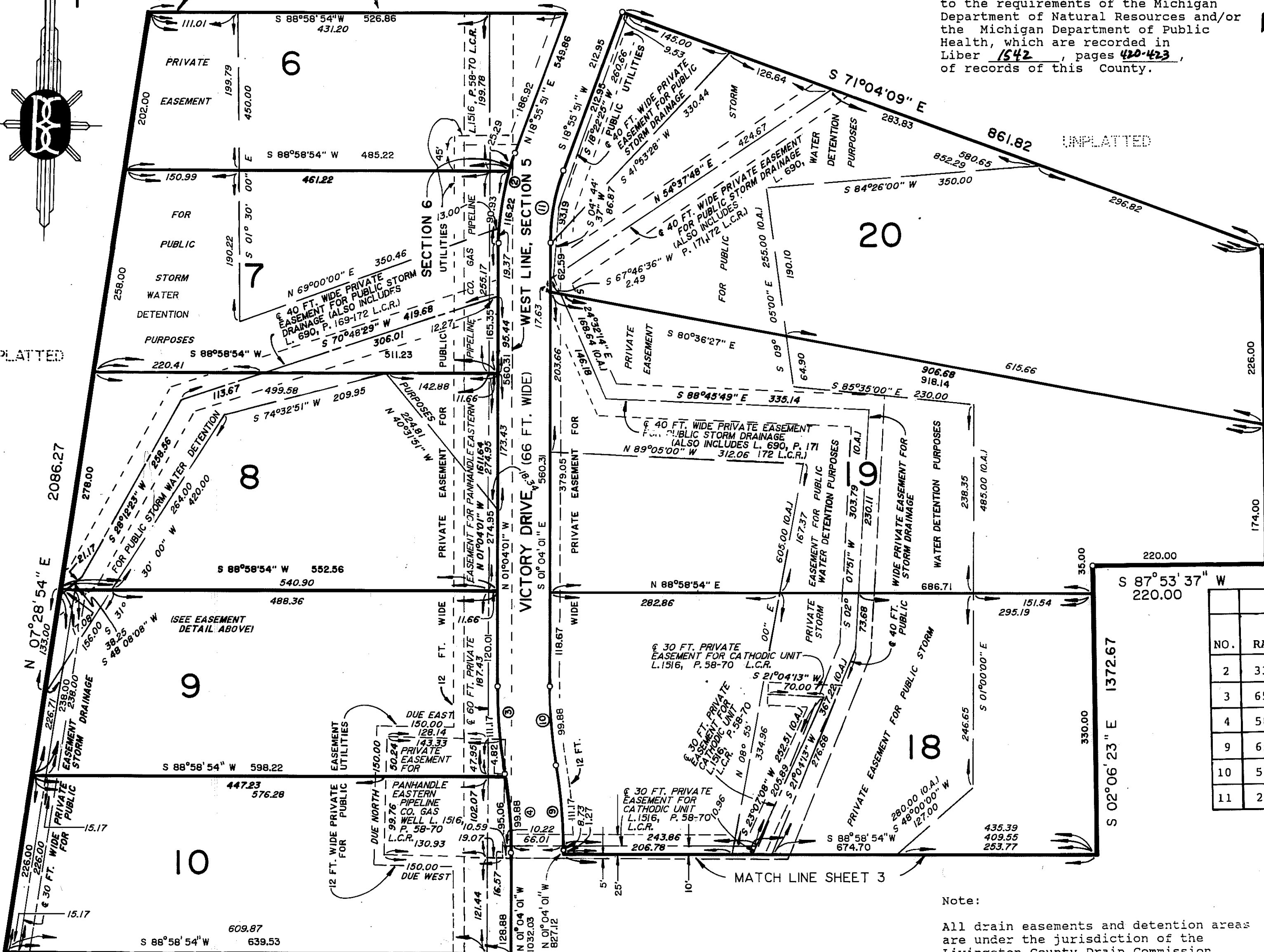
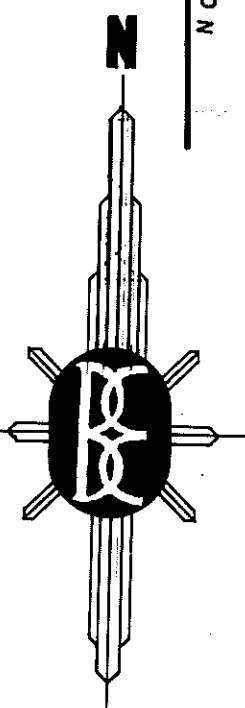
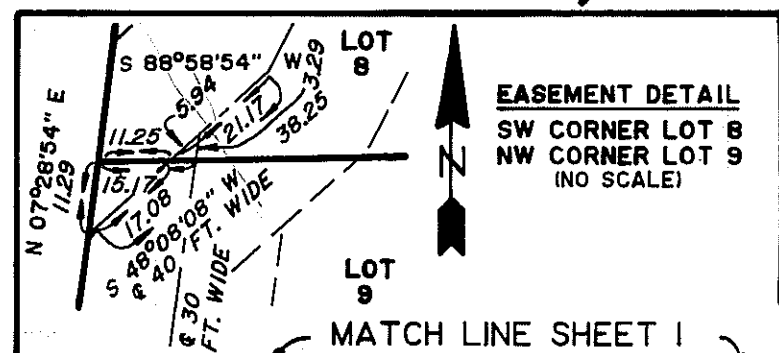
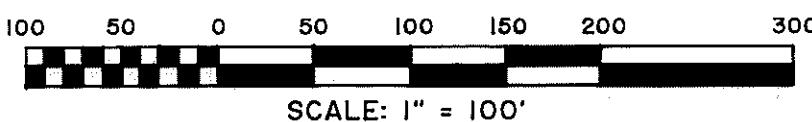
CURVE DATA					
NO.	RADIUS	DELTA	ARC	CHORD	BEARING
1	267.00	20°00'00"	93.20	92.73	S 08°55'51"W
12	197.00	26°10'21"	89.99	89.21	N 12°01'01"E



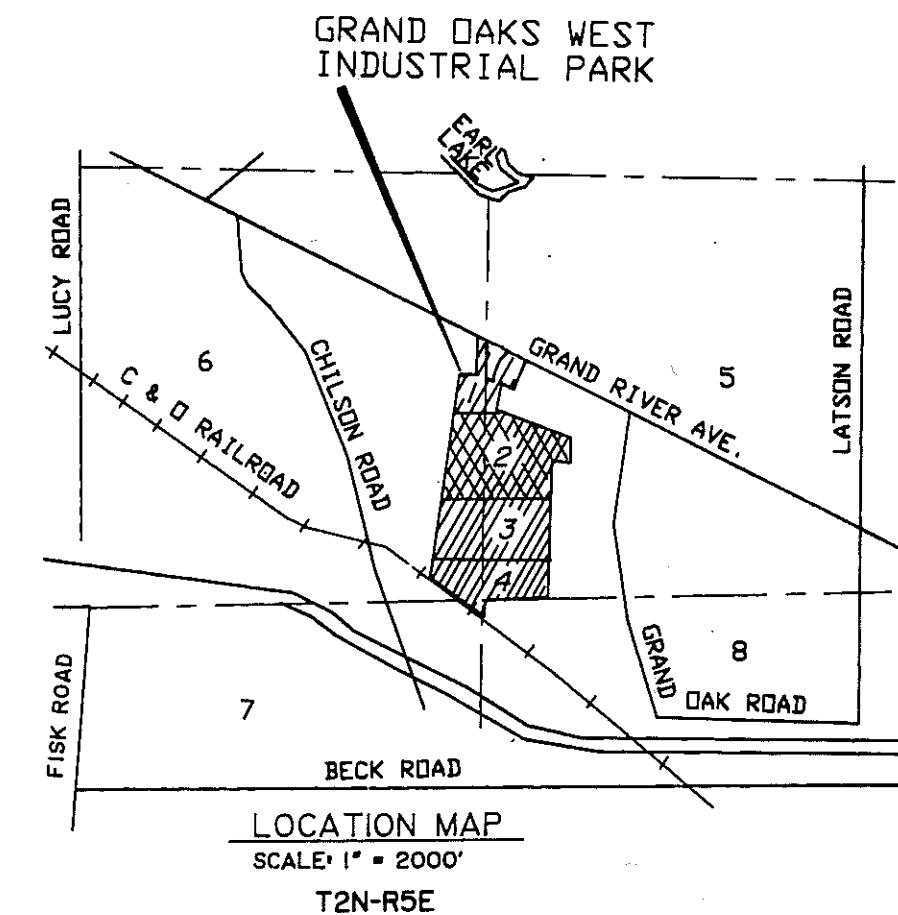
MATCH LINE SHEET 2

"GRAND OAKS WEST INDUSTRIAL PARK"

AN INDUSTRIAL SUBDIVISION OF PART OF THE NW FRL 1/4 SECTION 5,
SW 1/4 SECTION 5, SE 1/4 SECTION 6, AND NE 1/4 SECTION 7,
T2N-R5E, GENOA TOWNSHIP, LIVINGSTON COUNTY, MICHIGAN



This plat is subject to restrictions required by Act 288 of 1967, as amended on certain lots with respect to the requirements of the Michigan Department of Natural Resources and/or the Michigan Department of Public Health, which are recorded in Liber 1542, pages 420-423, of records of this County.

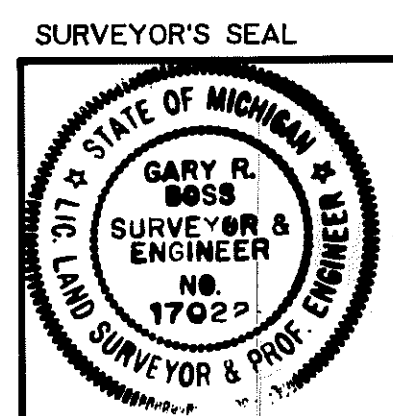


Legend:
All dimensions are shown in feet.
All curvilinear dimensions are shown along the arc.
The symbol "o" indicates a concrete monument, which is 4" in diameter x 36" long, encasing a 1/2" iron rod.
All lot makers are 1/2 inch iron rods and are 18 inches in length.
(R) Denotes a radial line.

Bearings were established by the Plat of "Grand Oaks Commercial Park" Subdivision as recorded in Liber 21 of Plats, Pages 45-47, Livingston County Records. South Line of Section 5 held.

CURVE DATA					
NO.	RADIUS	DELTA	ARC	CHORD	BEARING
2	333.00	19°59'52"	116.22	115.64	N 08°55'55" E
3	650.15	09°47'49"	111.17	111.03	N 05°57'55" W
4	584.15	09°47'49"	99.88	99.76	N 05°57'55" W
9	650.15	09°47'49"	111.17	111.03	N 05°57'55" W
10	584.15	09°47'49"	99.88	99.76	N 05°57'55" W
11	267.00	19°59'52"	93.19	92.72	N 08°55'55" E

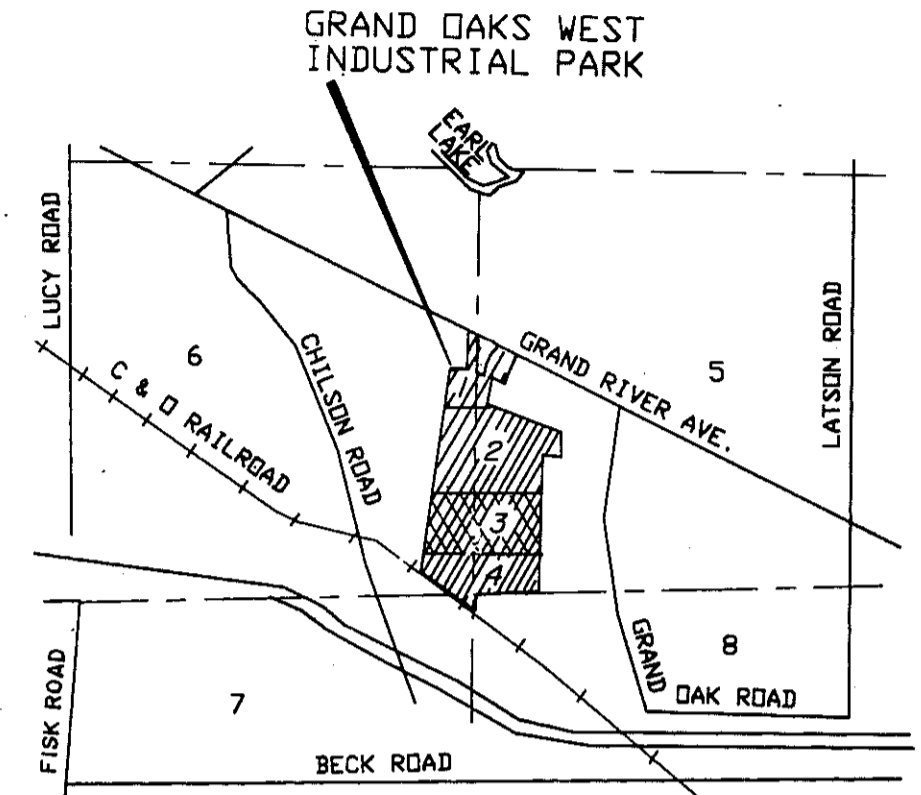
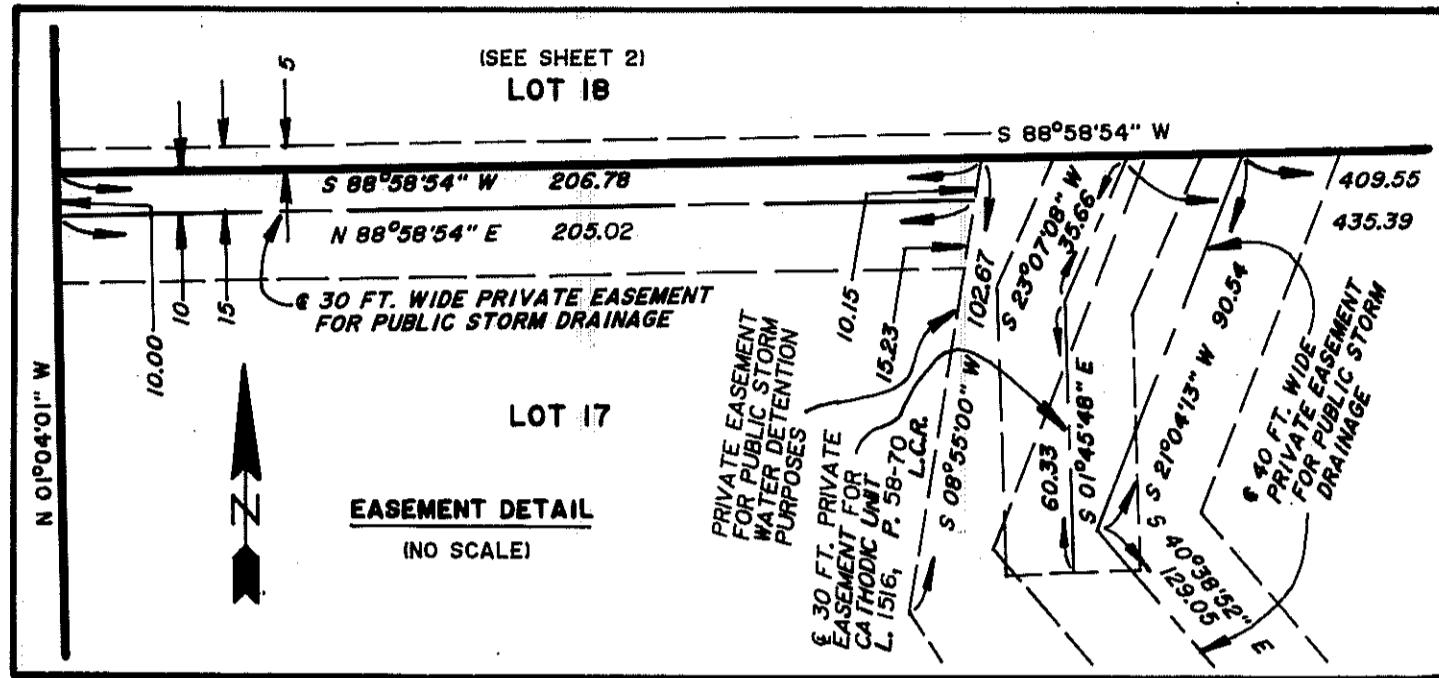
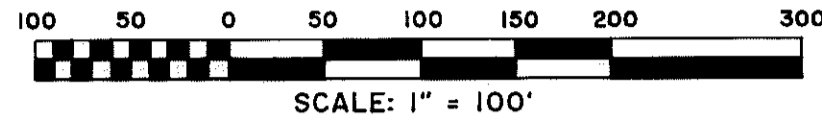
PREPARED AND DRAFTED BY:
Boss Engineering Company
3121 East Grand River
Howell, Michigan 48843
Gary R. Boss
Gary R. Boss



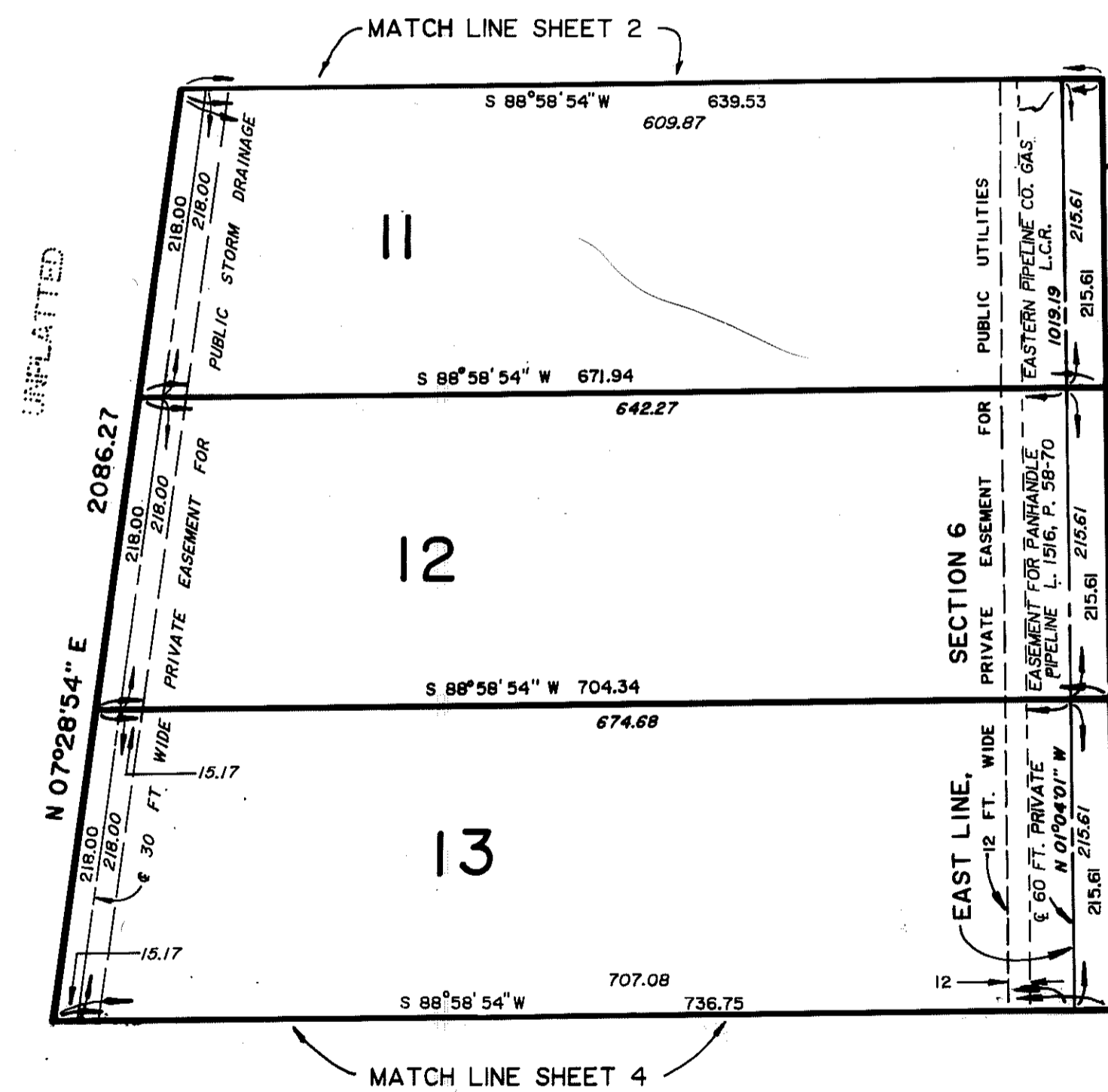
Note:
All drain easements and detention areas are under the jurisdiction of the Livingston County Drain Commission.

"GRAND OAKS WEST INDUSTRIAL PARK"

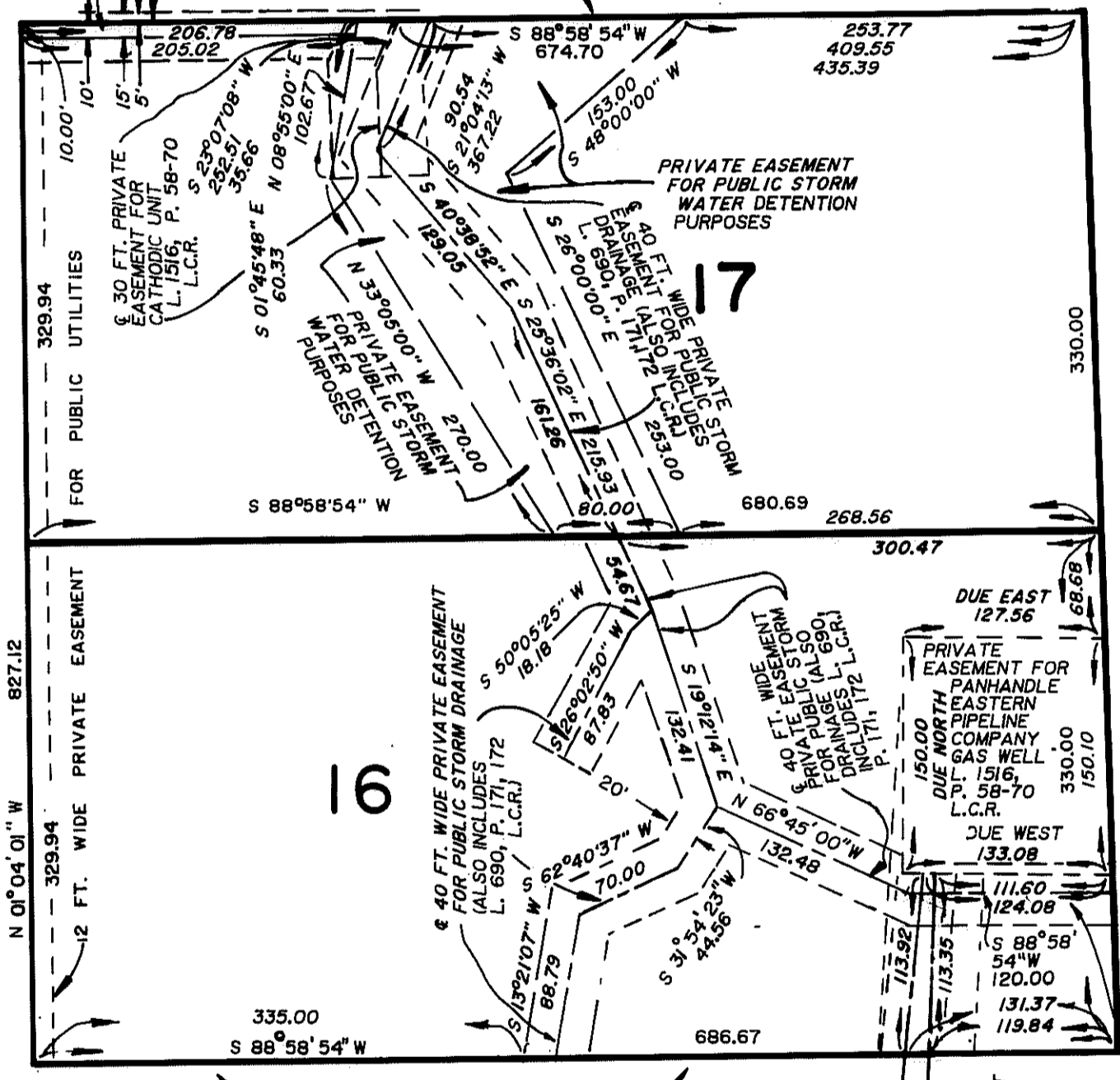
AN INDUSTRIAL SUBDIVISION OF PART OF THE NW FRL 1/4 SECTION 5,
SW 1/4 SECTION 5, SE 1/4 SECTION 6, AND NE 1/4 SECTION 7,
T2N-R5E, GENOA TOWNSHIP, LIVINGSTON COUNTY, MICHIGAN



LOCATION MAP
SCALE: 1" = 2000'
T2N-R5E



WEST LINE, SECTION 5
VICTORY DRIVE (66 FT. WIDE)



UNPLATTED

Legend:

All dimensions are shown in feet.

All curvilinear dimensions are shown along the arc.

The symbol "o" indicates a concrete monument, which is 4" in diameter x 36" long, encasing a 1/2" iron rod.

All lot makers are 1/2 inch iron rods and are 18 inches in length.

(R) Denotes a radial line.

Bearings were established by the Plat of "Grand Oaks Commercial Park" Subdivision as recorded in Liber 21 of Plats, Pages 45-47 Livingston County Records. South Line Section 5 held.

Note:

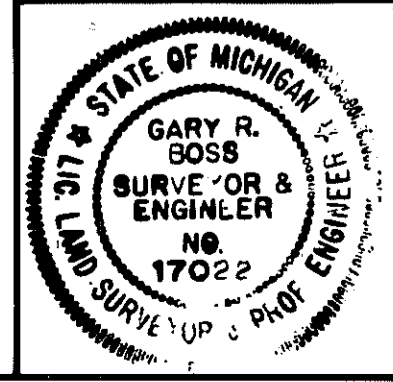
All drain easements and detention areas are under the jurisdiction of the Livingston County Drain Commission.

PREPARED AND DRAFTED BY:

Boss Engineering Company
3121 East Grand River
Howell, Michigan 48843

Gary R. Boss
Gary R. Boss

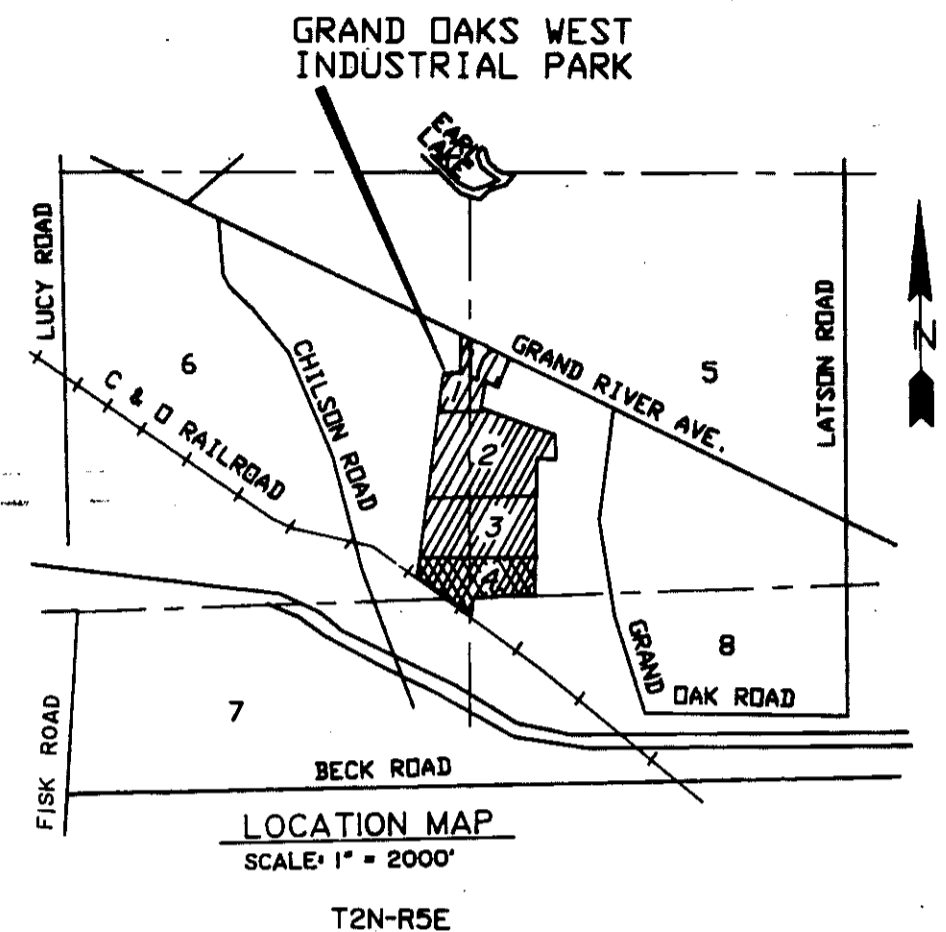
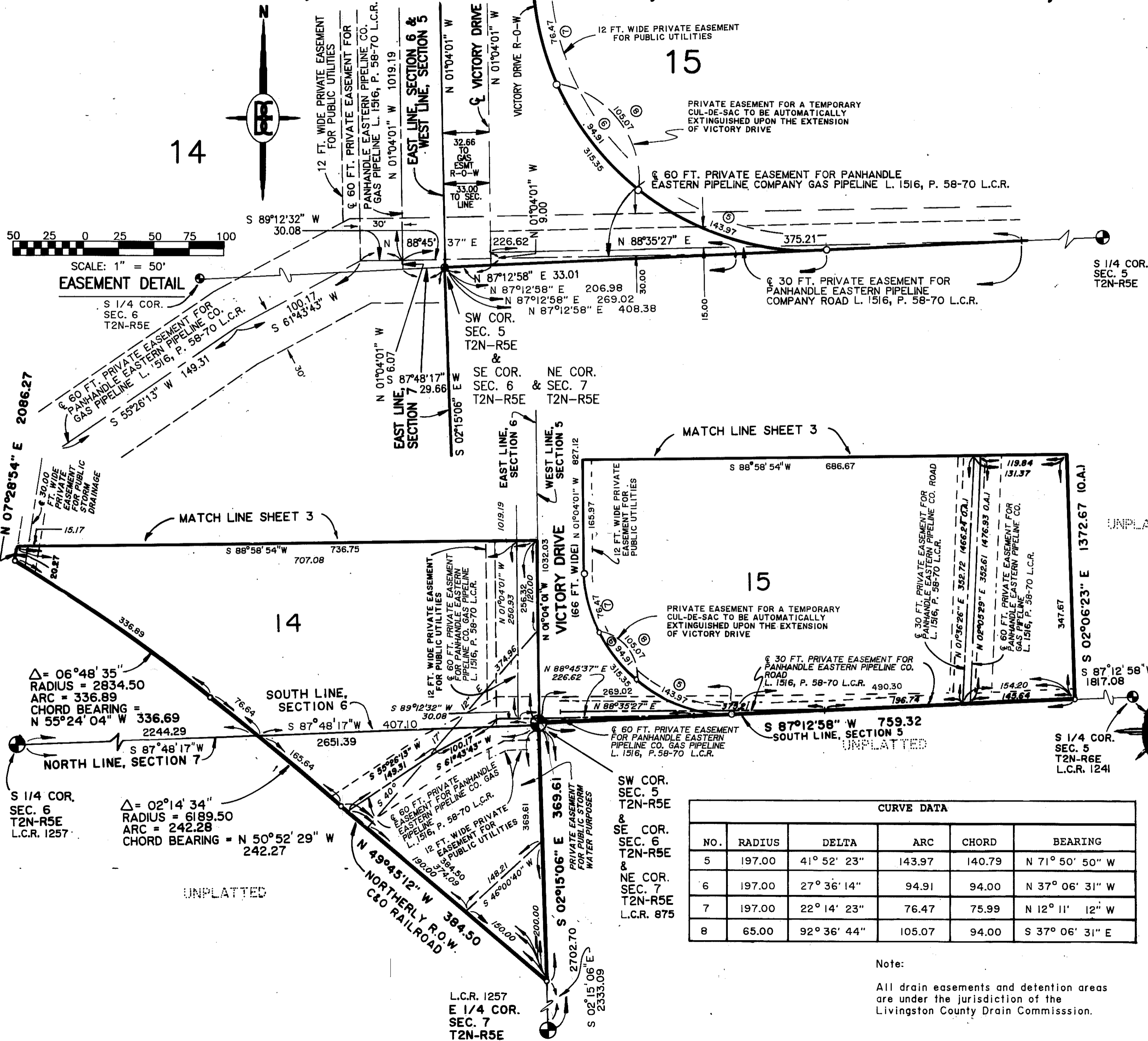
SURVEYOR'S SEAL



This plat is subject to restrictions required by Act 288 of 1967, as amended on certain lots with respect to the requirements of the Michigan Department of Natural Resources and/or the Michigan Department of Public Health, which are recorded in Liber 1542 pages 420-423, of records of this County.

"GRAND OAKS WEST INDUSTRIAL PARK"

AN INDUSTRIAL SUBDIVISION OF PART OF THE NW 1/4 SECTION 5,
SW 1/4 SECTION 5, SE 1/4 SECTION 6, AND NE 1/4 SECTION 7,
T2N-R5E, GENOA TOWNSHIP, LIVINGSTON COUNTY, MICHIGAN



Legend:

All dimensions are shown in feet.

All curvilinear dimensions are shown along the arc.

The symbol "o" indicates a concrete monument, which is 4" in diameter x 36" long, encasing a 1/2" iron rod.

All lot makers are 1/2 inch iron rods and are 18 inches in length.

(R) Denotes a radial line.

Bearings were established by the Plat of "Grand Oaks Commercial Park" Subdivision as recorded in Liber 21 of Plats, Pages 45-47 Livingston County Records. South Line Section 5 held.

This plat is subject to restrictions required by Act 288 of 1967, as amended on certain lots with respect to the requirements of the Michigan Department of Natural Resources and/or the Michigan Department of Public Health, which are recorded in Liber 1542, pages 420-423, of records of this county.

CURVE DATA

NO.	RADIUS	DELTA	ARC	CHORD	BEARING
5	197.00	41° 52' 23"	143.97	140.79	N 71° 50' 50" W
6	197.00	27° 36' 14"	94.91	94.00	N 37° 06' 31" W
7	197.00	22° 14' 23"	76.47	75.99	N 12° 11' 12" W
8	65.00	92° 36' 44"	105.07	94.00	S 37° 06' 31" E

Note:
All drain easements and detention areas are under the jurisdiction of the Livingston County Drain Commission.

PREPARED AND DRAFTED BY:
Boss Engineering Company
3121 East Grand River
Howell, Michigan 48843
Gary R. Boss
Gary R. Boss

