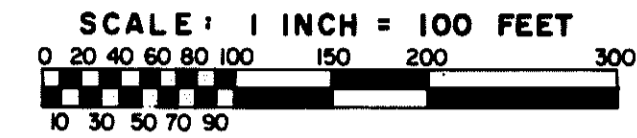
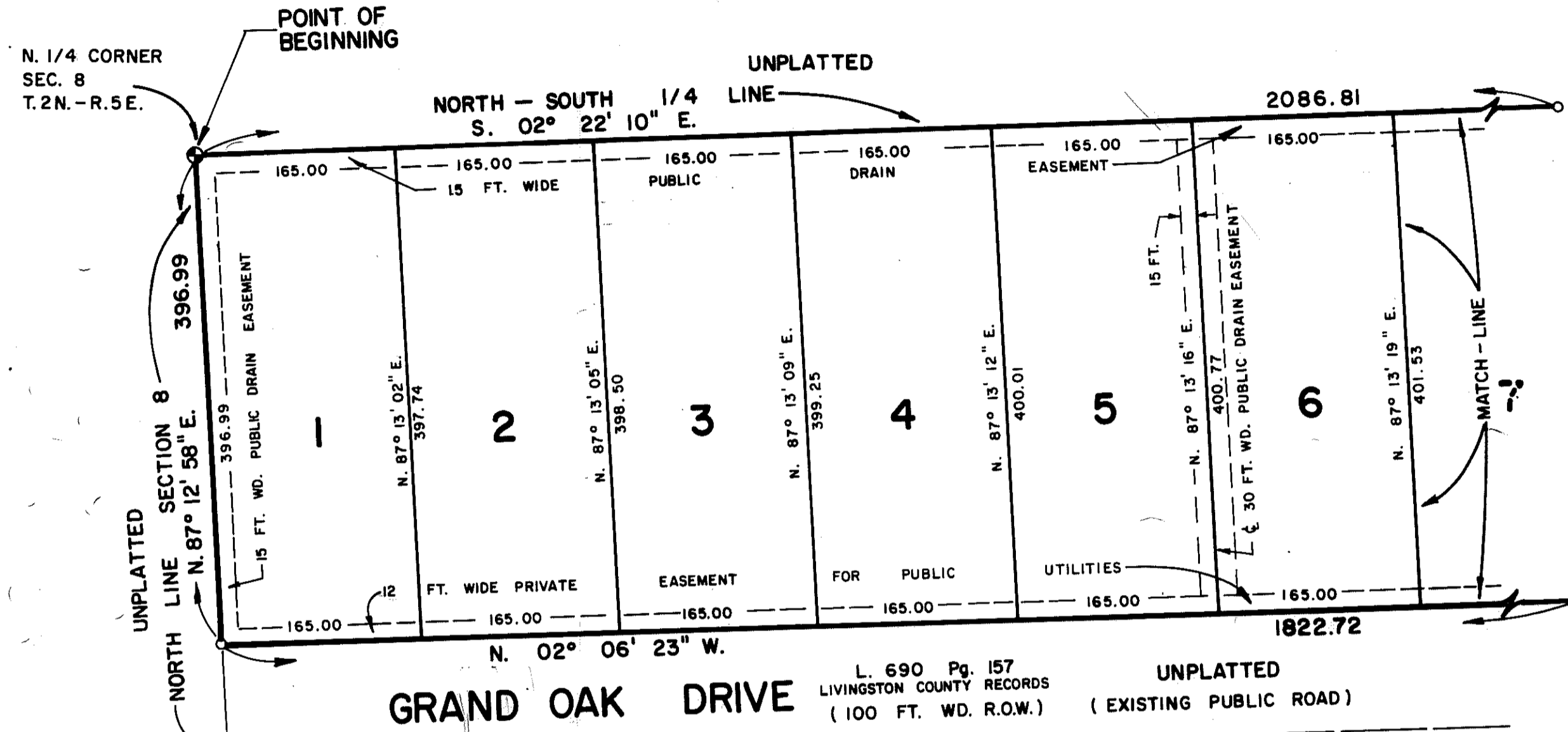


"GRAND OAKS INDUSTRIAL PARK"

A PART OF THE NW. 1/4, SEC. 8, T.2N. - R.5E., GENOA TOWNSHIP, LIVINGSTON COUNTY, MICHIGAN



SHEET 1 OF 4 SHEETS



N. 1/4 CORNER SEC. 8 T.2N. - R.5E.

POINT OF BEGINNING

UNPLATTED

NORTH - SOUTH 1/4 LINE S. 02° 22' 10" E.

2086.81

UNPLATTED NORTH LINE SECTION 8 N. 87° 12' 58" E. 396.99

15 FT. WD. PUBLIC DRAIN EASEMENT 396.99

N. 87° 13' 02" E. 397.74

N. 87° 13' 05" E. 398.50

N. 87° 13' 09" E. 399.25

N. 87° 13' 12" E. 400.01

N. 87° 13' 16" E. 400.77

N. 87° 13' 19" E. 401.53

MATCH - LINE

UNPLATTED

15 FT. WIDE PRIVATE EASEMENT FOR PUBLIC UTILITIES

165.00

165.00

165.00

165.00

165.00

165.00

165.00

165.00

165.00

165.00

165.00

165.00

165.00

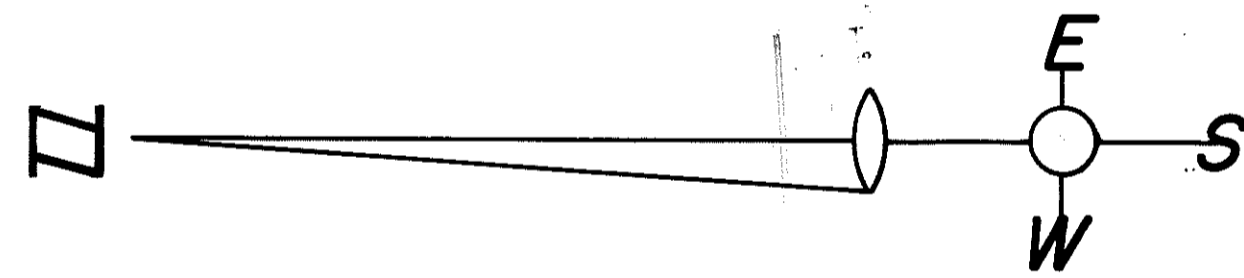
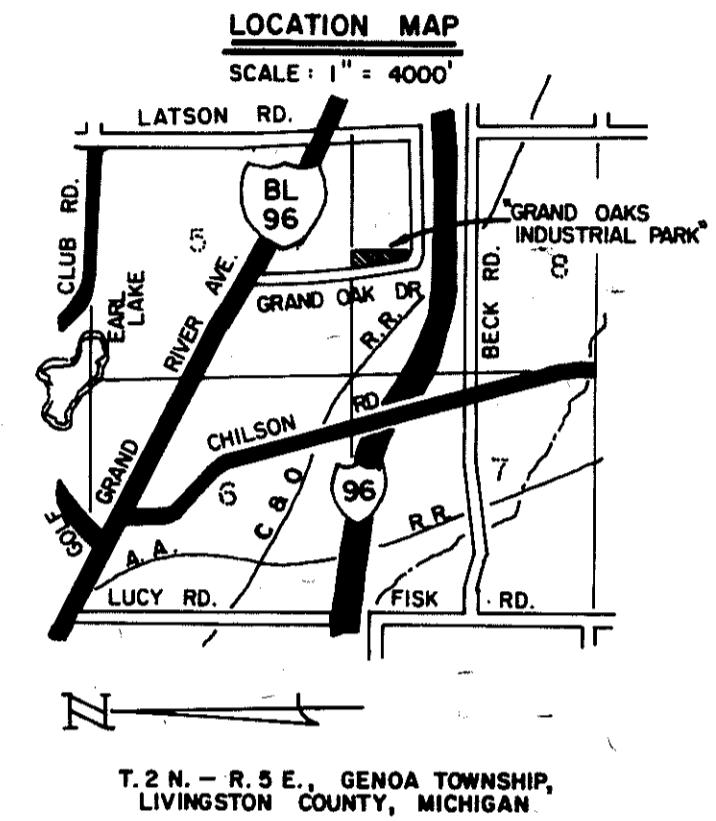
GRAND OAK DRIVE

L. 690 Pg. 157 LIVINGSTON COUNTY RECORDS (100 FT. WD. R.O.W.)

UNPLATTED (EXISTING PUBLIC ROAD)

CERTIFIED TRUE COPY OF RECORDED PLAT.

LOREN F. MOHRER STATE TREASURER
Richard E. Lomas, Plat Examiner
April 18, 1979



NW. CORNER SEC. 8 T.2N. - R.5E.

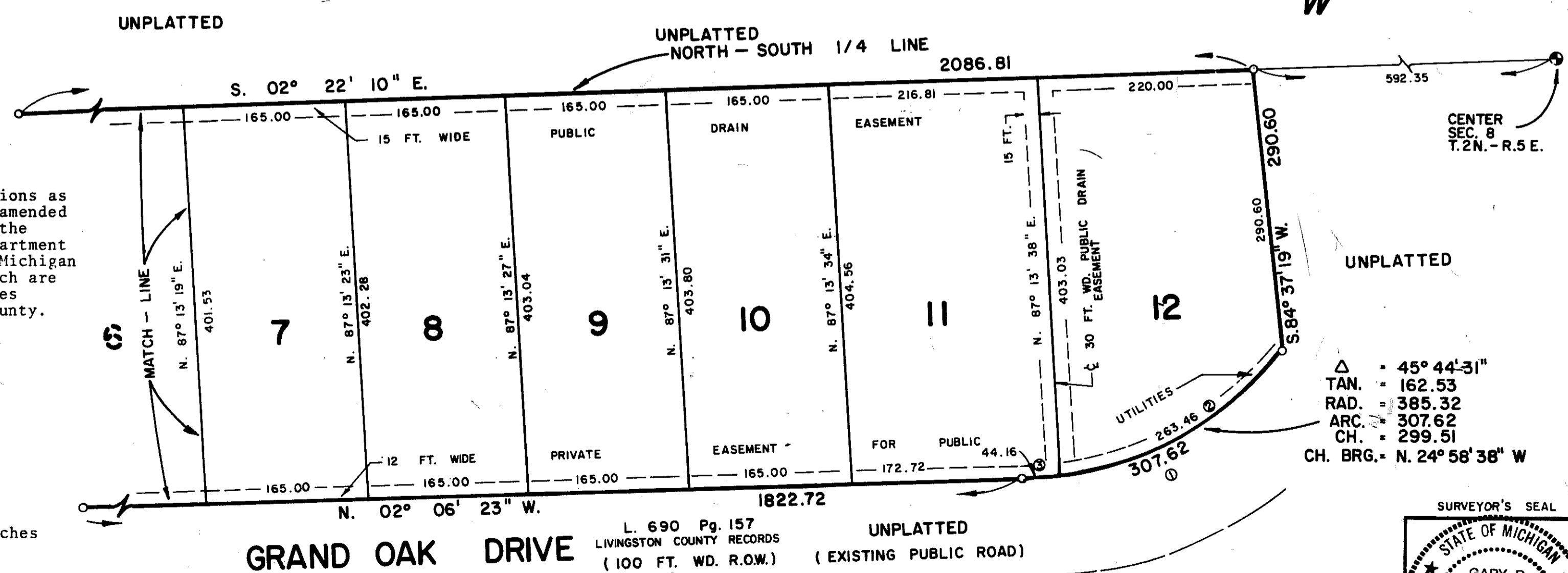
This plat is subject to restrictions as required by Act 288 of 1967, as amended on certain lots with respect to the requirements of the Michigan Department of Natural Resources and/or the Michigan Department of Public Health, which are recorded in Liber 920, pages 566-571 of records of this county.

LEGEND

- All dimensions are shown in feet.
- All curvilinear dimensions are shown along the arc.
- Bearings were established from Polaris Observation on June 16, 1978.
- The symbol "o" indicates a concrete monument.
- All lot markers are 1/2 inch iron rods and are 18 inches in length.

CURVE DATA:

N°	DELTA	RADIUS	ARC	TAN.	CHORD	CH. BEARING
1	45° 44' 31"	385.32	307.62	162.53	299.51	N. 24° 58' 38" W.
2	39° 10' 31"	385.32	263.46	137.11	258.35	N. 28° 15' 41" W.
3	06° 34' 00"	385.32	44.16	22.10	44.14	N. 05° 23' 23" W.

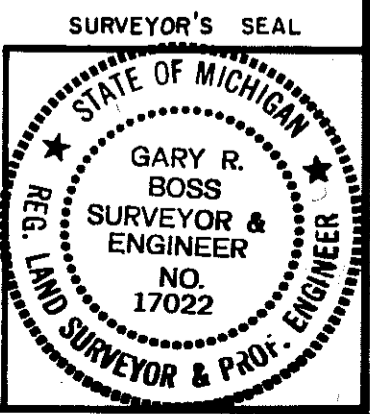


Δ = 45° 44' 31"
TAN. = 162.53
RAD. = 385.32
ARC. = 307.62
CH. = 299.51
CH. BRG. = N. 24° 58' 38" W

GRAND OAK DRIVE

L. 690 Pg. 157 LIVINGSTON COUNTY RECORDS (100 FT. WD. R.O.W.)

UNPLATTED (EXISTING PUBLIC ROAD)



Prepared and drafted by:

BOSS ENGINEERING CO.
3121 E. Grand River
Howell, Michigan 48843