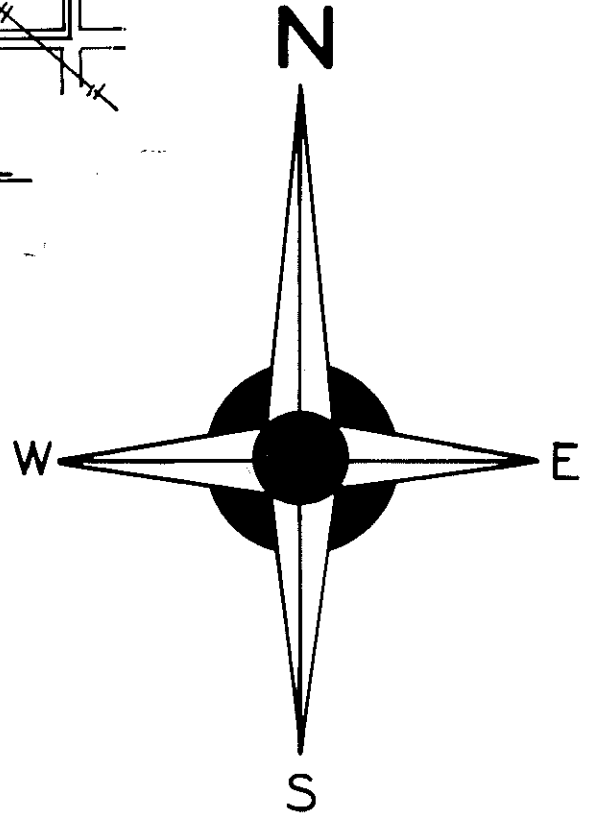
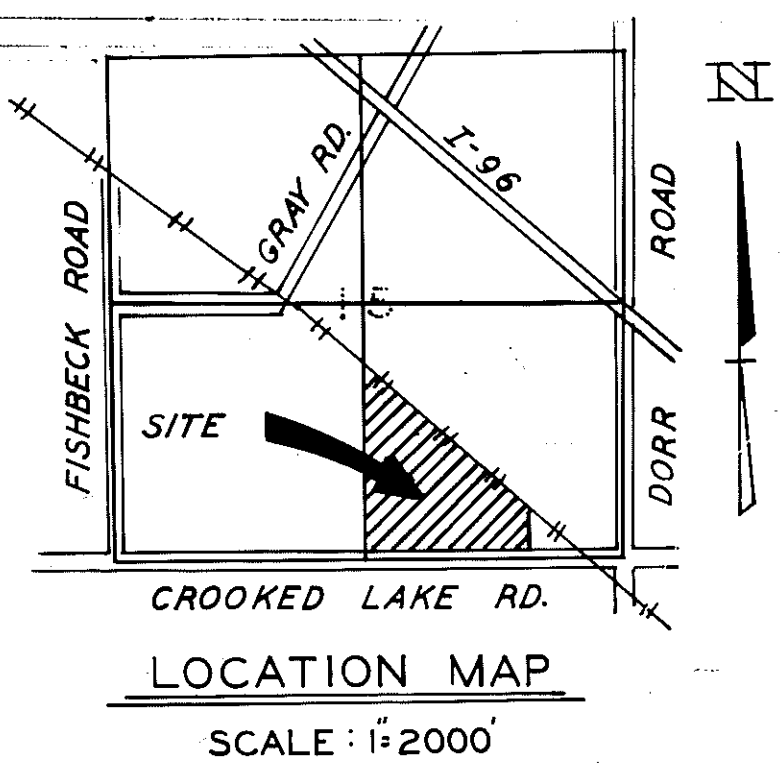
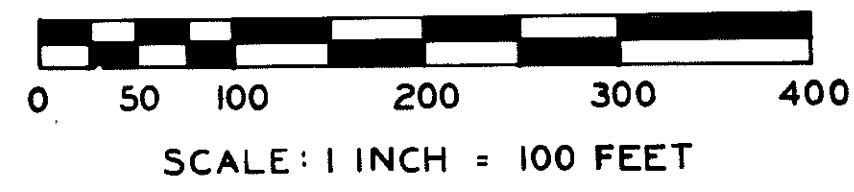


"GENOA ESTATES NO. 1"

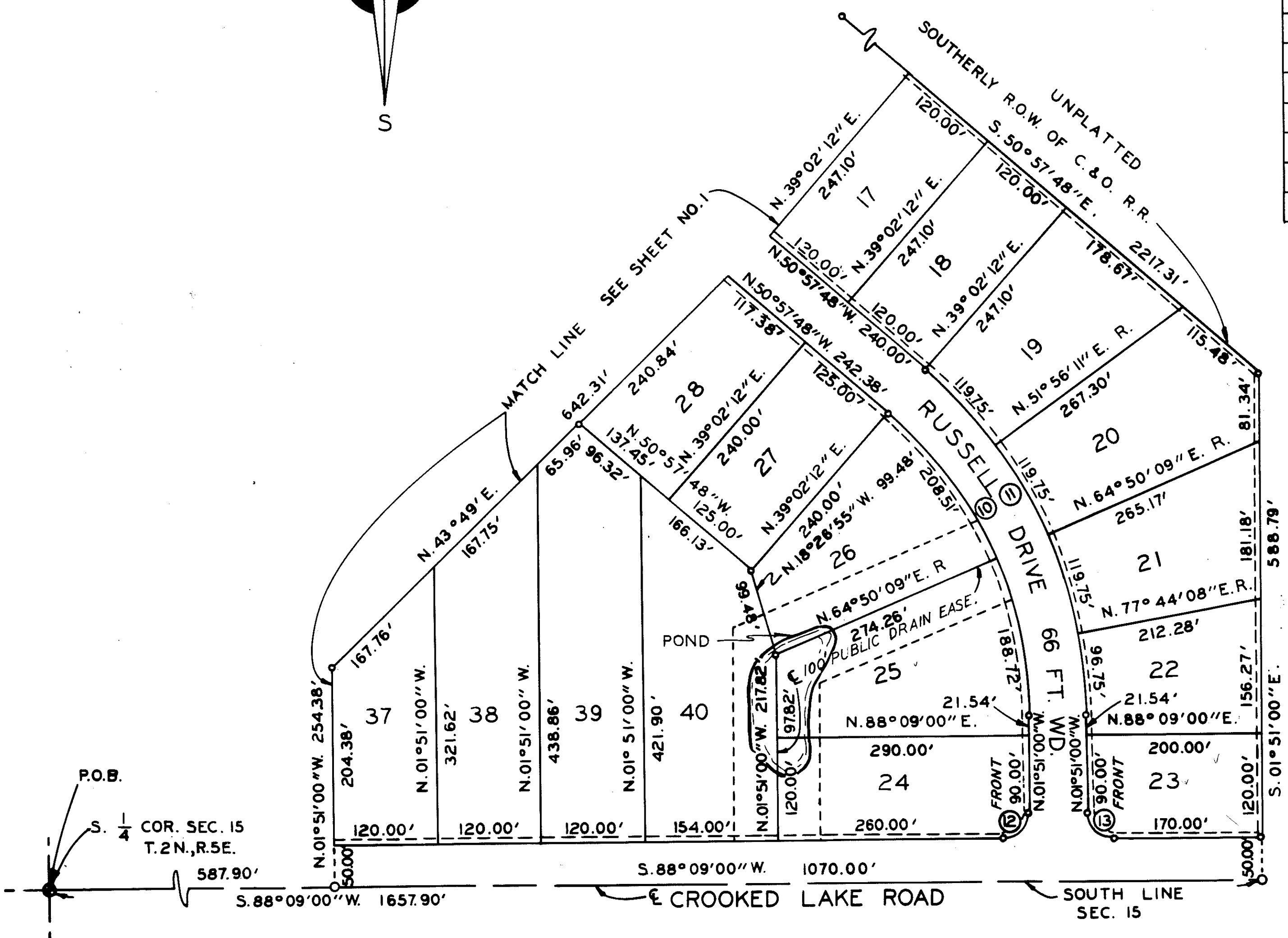
PART OF THE S.E. $\frac{1}{4}$ OF SECTION 15
T.2N., R.5E., GENOA TOWNSHIP
LIVINGSTON COUNTY, MICHIGAN



CURVE DATA					
NO.	RADIUS	DELTA ANGLE	ARC	CHORD BEARING	CHORD DISTANCE
1	30.00'	90°00'00"	47.12'	N.43°09'00"E.	42.43'
2	30.00'	90°00'00"	47.12'	N.46°51'00"W.	42.43'
3	533.00'	45°40'00"	424.82'	N.20°59'00"E.	413.66'
4	467.00'	45°40'00"	372.21'	N.20°59'00"E.	362.44'
5	30.00'	94°46'48"	49.63'	N.03°34'24"W.	44.16'
6	30.00'	85°13'12"	44.62'	N.86°25'36"E.	40.62'
7	56.32'	45°00'00"	44.23'	N.73°27'48"W.	43.11'
8	70.00'	270°00'00"	329.87'	N.39°02'12"E.	98.99'
9	56.32'	45°00'00"	44.23'	N.28°27'48"W.	43.11'
10	467.00'	49°06'48"	400.31'	N.26°24'24"W.	388.16'
11	533.00'	49°06'48"	456.88'	N.26°24'24"W.	443.02'
12	30.00'	90°00'00"	47.12'	N.43°09'00"E.	42.43'
13	30.00'	90°00'00"	47.12'	N.46°51'00"W.	42.43'

LEGEND

1. ALL DIMENSIONS ARE IN FEET.
2. ALL CURVE DIMENSIONS ARE CHORDS.
3. CONCRETE MONUMENTS HAVE BEEN PLACED AT ALL POINTS MARKED "o"
4. LOT CORNERS HAVE BEEN MARKED WITH 1/2"x18" LENGTHS OF STEEL ROD.
5. BEARINGS ARE BASED ON TRUE NORTH BY OBSERVATION OF POLARIS (9-7-71).
6. ----- INDICATES 6 FT. PRIVATE EASEMENT FOR PUBLIC UTILITIES.



UNPLATTED

P.O.B.
S. $\frac{1}{4}$ COR. SEC. 15
T.2N., R.5E.
587.90'

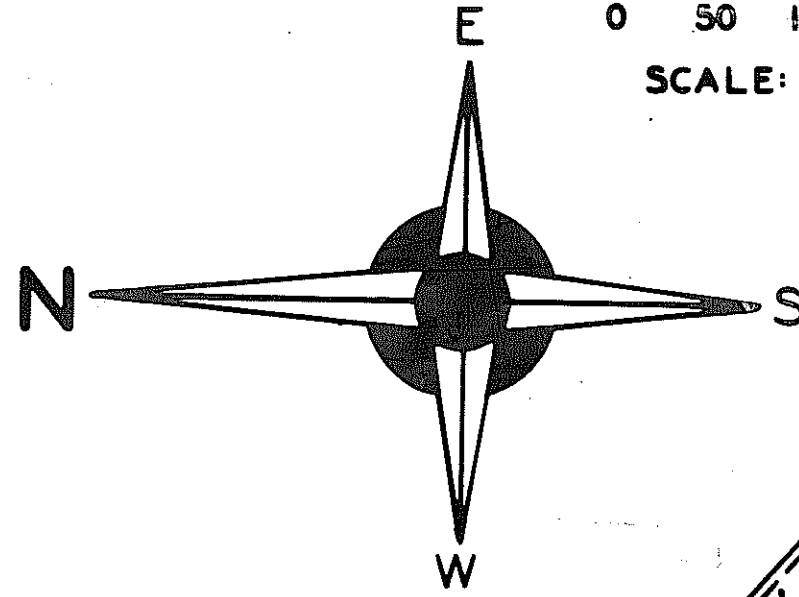
S.88°09'00"W. 1657.90'
S.88°09'00"W. 1070.00'
E CROOKED LAKE ROAD
SOUTH LINE SEC. 15

GENOA ESTATES NO. 1

PART OF THE S.E. $\frac{1}{4}$ OF SECTION 15
T.2N., R.5E., GENOA TOWNSHIP
LIVINGSTON COUNTY, MICHIGAN

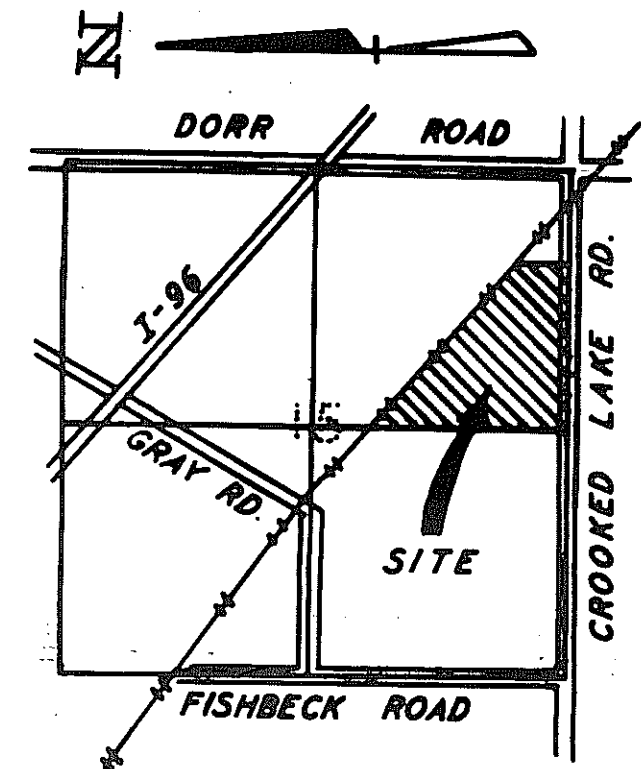


SCALE: 1 INCH = 100 FEET



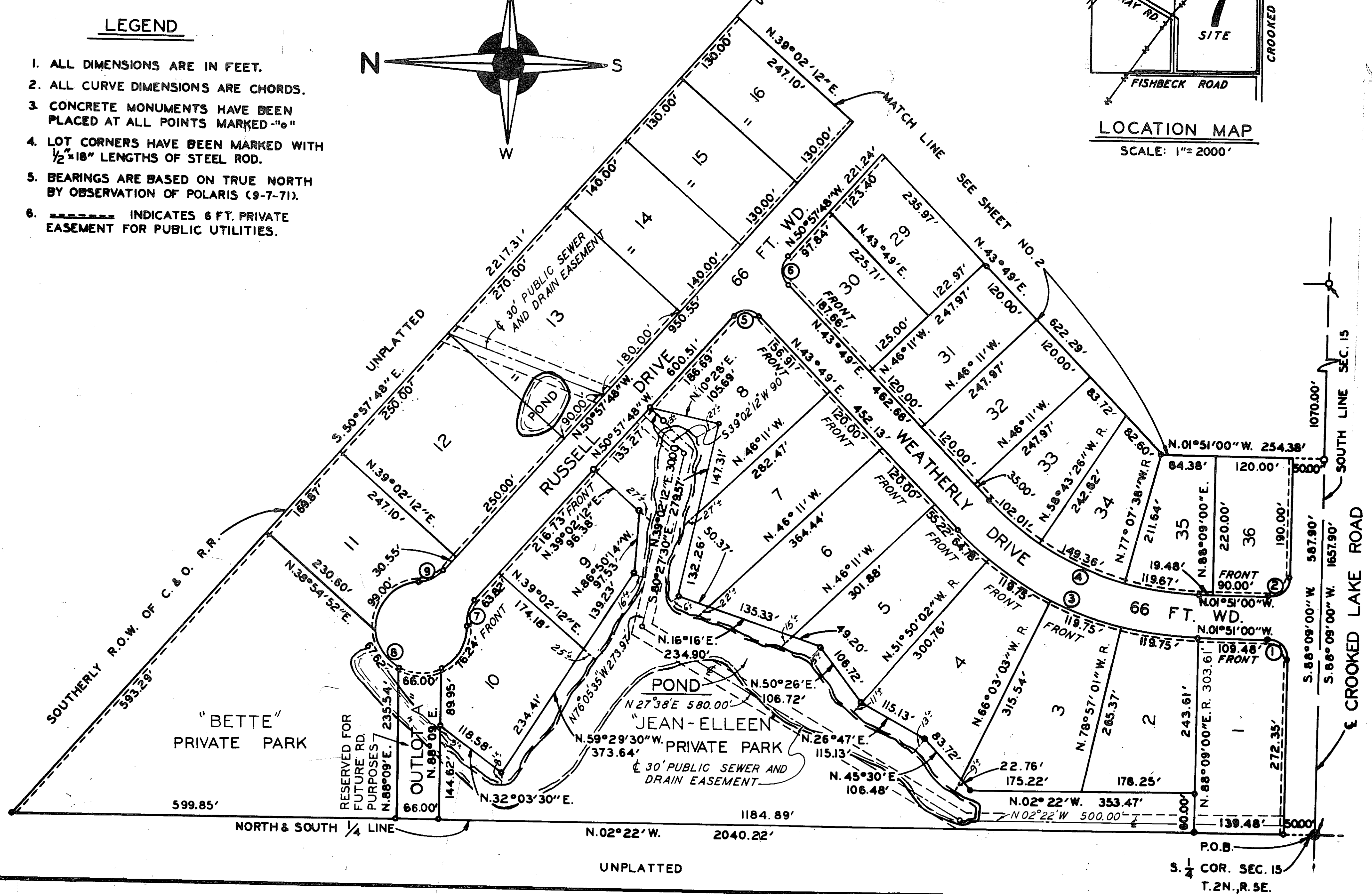
LEGEND

1. ALL DIMENSIONS ARE IN FEET.
2. ALL CURVE DIMENSIONS ARE CHORDS.
3. CONCRETE MONUMENTS HAVE BEEN PLACED AT ALL POINTS MARKED "o"
4. LOT CORNERS HAVE BEEN MARKED WITH $\frac{1}{2}$ "x18" LENGTHS OF STEEL ROD.
5. BEARINGS ARE BASED ON TRUE NORTH BY OBSERVATION OF POLARIS (9-7-71).
6. INDICATES 6 FT. PRIVATE EASEMENT FOR PUBLIC UTILITIES.



LOCATION MAP

SCALE: 1" = 2000'



1070.00' SOUTH LINE SEC. 15
5000'
5000'
S. 88° 09' 00" W. 567.90'
S. 88° 09' 00" W. 1657.90'
E. CROOKED LAKE ROAD

"BETTE" PRIVATE PARK

"JEAN-ELLEEN" PRIVATE PARK

599.85'

NORTH & SOUTH $\frac{1}{4}$ LINE

N. 02° 22' W. 2040.22'

UNPLATTED

P.O.B.
S. $\frac{1}{4}$ COR. SEC. 15
T.2N., R.5E.