

# SUTLER V ISURE PLAT OF FOREST BEACH PART OF THE W. 1/2 OF SEC. 26, T. 2 N., R. 5 E., GENOA TWP., LIVINGSTON CO., MICHIGAN.

SCALE - 1" = 100'  
Note: All dimensions shown hereon are in feet or decimals of feet.

Sept 20, 1928  
L. W. Mosher

### DEDICATION

KNOW ALL MEN BY THESE PRESENTS, that I, Oscar Schoenhals, Supervisor of the Township of Genoa of Livingston County, State of Michigan, by virtue of authority in me vested by Section 3350, Compiled Laws of 1915, as amended, having been duly authorized by the Township Board, have caused the land described in the annexed plat to be surveyed, laid out and platted to be known as "Supervisor's Plat of Forest Beach."

Witness my hand and the seal of said Township of Genoa, this 15th day of September, A.D. 1928.

Oscar Schoenhals, Supervisor of the Township of Genoa

STATE OF MICHIGAN }  
County of Livingston }  
On this 15th day of September, A.D. 1928, before me, a Notary Public in and for said County, personally came the above named Supervisor of the Township of Genoa, known to me to be the person who executed the above dedication and acknowledged the same to be his free act and deed as such Supervisor.

Lillian J. Mosser, Notary Public in and for Livingston County

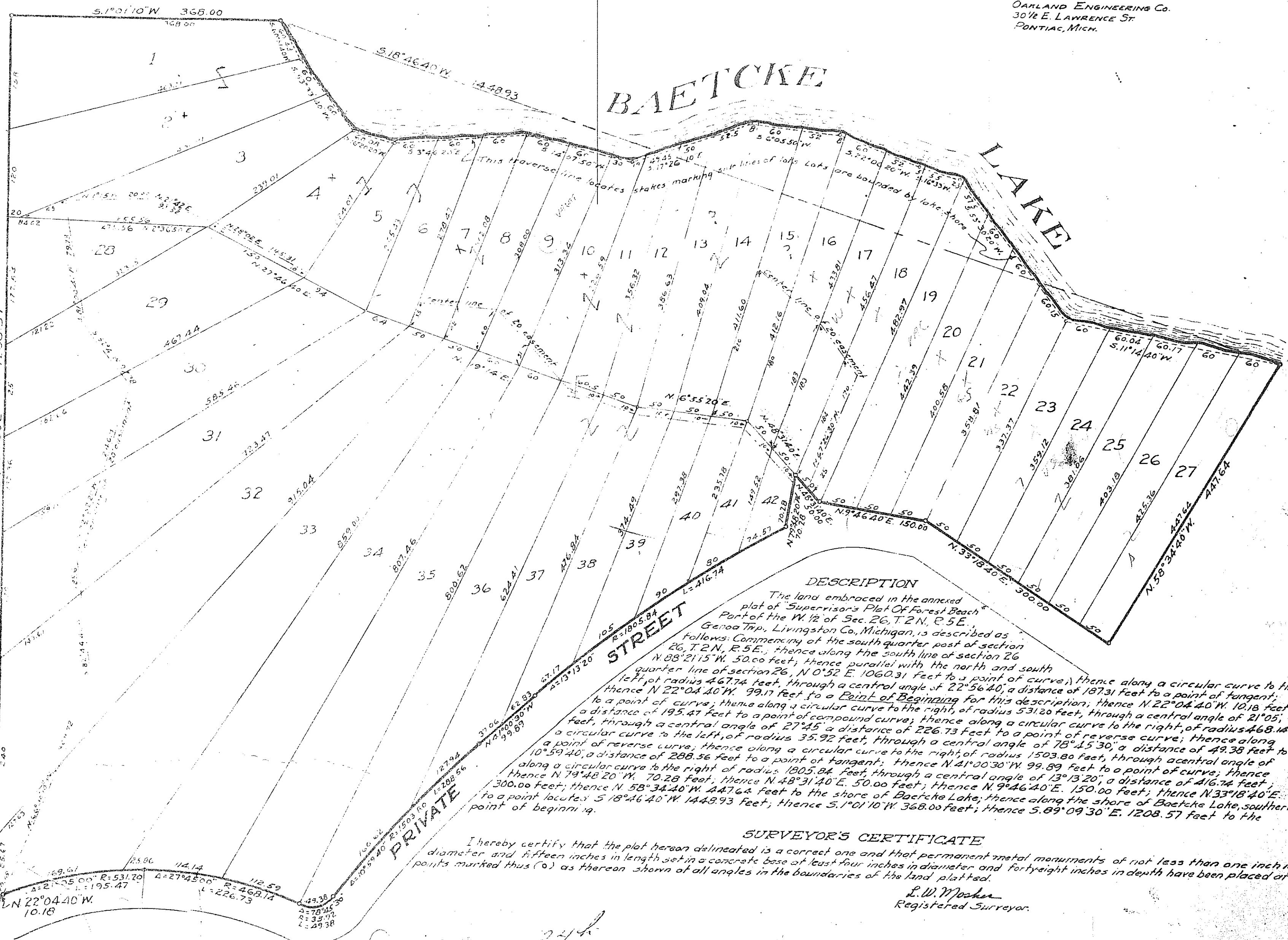
My Commission expires May 10th, 1930

**CERTIFICATE OF MUNICIPAL APPROVAL**  
This plat was approved by the Township Board of the Township of Genoa at a meeting held on the 15th day of September, 1928.

**CERTIFICATE OF APPROVAL BY COUNTY BOARD**  
This plat was approved on the 7th day of September, 1928.

Judge of Probate  
County Clerk  
County Treasurer

**County Treasurer Certificate**  
I hereby certify that there are no tax liens or taxes held by the State or County against the land shown on this plat and that the same are paid as shown by the records of this office.



**DESCRIPTION**

The land embraced in the annexed plat of "Supervisor's Plat of Forest Beach" Part of the W. 1/2 of Sec. 26, T. 2 N., R. 5 E., Genoa Twp., Livingston Co., Michigan, is described as follows: Commencing at the south quarter post of section 26, T. 2 N., R. 5 E.; thence along the south line of section 26, N. 88° 21' 15\"/>

**SURVEYOR'S CERTIFICATE**

I hereby certify that the plat hereon delineated is a correct one and that permanent metal monuments of not less than one inch in diameter and fifteen inches in length set in a concrete base at least four inches in diameter and forty-eight inches in depth have been placed at points marked thus (O) as thereon shown at all angles in the boundaries of the land platted.

L. W. Mosher  
Registered Surveyor.

N. 0° 52' E.  
S 1/4 COR. S. 1/4 LINE SEC. 26  
T. 2 N., R. 5 E.

244  
28 10  
Plate  
L. W. Mosher