

**LIVINGSTON
ENGINEERING**
Civil Engineering
SURVEYING, PLANNING
LAND ACQUISITION
PROJECT MGMT. AND COST
ESTIMATION SERVICES

**CHESTNUT
SPRINGS**

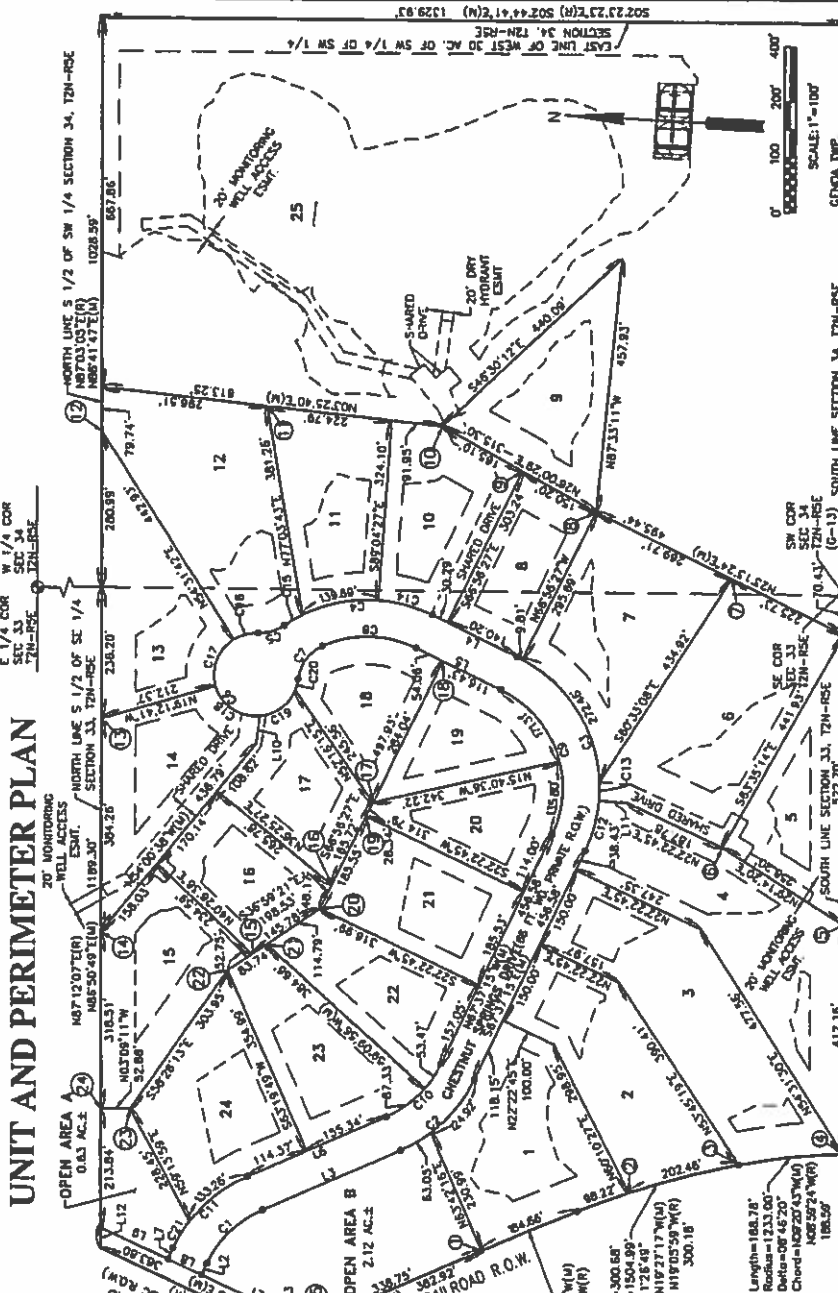
**UNIT AND
PERIMETER PLAN**

DATE _____

PREPARED BY _____

APPROVED BY _____

SCALE 1" = 100'



LIST OF COORDINATES

NO.	NORTHING	EASTING
1	370142.9891	1328114.19789
2	369896.4584	13261260.3242
3	369893.6067	13261372.0445
4	369507.5186	13281352.8680
5	369530.1636	13261764.2010
6	369735.4874	13261890.5197
7	369766.3214	13262375.1261
8	370014.1754	13262481.4781
9	370148.1640	13262547.3378
10	370297.5461	13262619.7342
11	370613.7187	13262838.6723
12	370905.1000	13262978.2953
13	370875.9159	13262060.4290
14	370854.7802	13261676.7411
15	370583.3076	13261852.4504
16	370448.0787	13261784.4828
17	370393.1877	13261838.9453
18	370271.9143	13262198.2908
19	370394.2707	13261810.3653
20	370466.9462	13261740.1412
21	370265.5203	13261620.6935
22	370784.4862	13261561.6104
23	370237.2813	13261358.7111
24	370446.6837	13262099.6130

CURVE DATA

CURVE	LENGTH	RADIUS	DELTA	CHORD	CHORD BEARING	DELTA	CHORD LENGTH
C1	141.95'	197.00'	41°17'16"	147°18'49"	138.91'	109.91'	
C2	197.87'	263.00'	40°57'04"	147°08'43"	184.00'	74.43'	
C3	410.00'	283.00'	89°19'12"	149°43'08"	389.72'	187.84'	
C4	275.73'	283.00'	60°56'30"	149°24'42"	286.73'	276.94'	
C5	46.86'	75.00'	37°11'14"	119°17'20"	47.83'	109.91'	
C6	348.33'	75.00'	26°08'13"	146°15'11"	348.33'	109.91'	
C7	77.88'	75.00'	59°28'44"	146°03'03"	74.43'	109.91'	
C8	173.16'	197.00'	50°21'44"	146°07'18"	167.84'	109.91'	
C9	307.11'	197.00'	89°19'12"	146°03'08"	278.94'	109.91'	
C10	140.86'	197.00'	40°57'04"	146°03'08"	137.82'	109.91'	
C11	189.52'	263.00'	41°17'16"	146°15'11"	185.45'	109.91'	
C12	94.84'	263.00'	20°37'06"	146°03'08"	94.84'	109.91'	
C13	33.09'	263.00'	7°12'30"	146°03'08"	33.07'	109.91'	
C14	101.60'	263.00'	22°08'00"	146°03'08"	100.97'	109.91'	
C15	38.41'	263.00'	8°22'31"	146°03'08"	38.41'	109.91'	
C16	45.52'	75.00'	34°48'35"	146°03'08"	44.83'	109.91'	
C17	96.53'	75.00'	73°44'23"	146°20'20"	90.00'	109.91'	
C18	103.23'	75.00'	76°51'49"	151°21'24"	95.27'	109.91'	
C19	82.98'	75.00'	63°23'55"	159°46'28"	78.82'	109.91'	
C20	20.06'	75.00'	15°19'30"	159°08'11"	20.00'	109.91'	
C21	56.26'	263.00'	12°15'27"	146°15'11"	56.16'	109.91'	

UNIT TABLE

UNIT NO.	AREA (SQ. FT.)
1	81,742
2	79,332
3	104,456
4	108,108
5	56,984
6	105,879
7	84,951
8	44,907
9	66,174
10	81,026
11	81,851
12	97,153
13	87,738

UNIT TABLE

UNIT NO.	AREA (SQ. FT.)
14	66,765
15	63,871
16	48,444
17	48,547
18	44,498
19	44,028
20	45,046
21	56,608
22	55,330
23	59,956
24	71,083

LINE DATA

LINE	BEARING	LENGTH
L1	S22°02'33"W	209.88
L2	S87°37'21"E	22.08
L3	S28°40'11"E	269.71
L4	M2°00'33"E	170.49
L5	S23°03'33"W	170.49
L6	N26°40'11"W	269.71
L7	N87°37'21"E	22.08
L8	S22°02'33"W	86.00
L9	N22°02'33"E	132.81
L10	N85°21'50"W	50.74
L11	N01°45'38"E	50.00
L12	N86°50'49"E	36.47
L13	S26°17'44"E	44.17

LEGEND

60' REAR YARD SETBACK
 30' SIDE YARD SETBACK
 30' FRONT YARD SETBACK TO PORCH (GENERAL COMMON ELEVATION)
 ROAD SHOULDER (UNIT 1-26)
 NOT TO SCALE

1" = 100'
 0' 100' 200' 400'
 SCALE: 1" = 100'
 CEDA TWP.
 HUSBURG TWP.

LEGEND
 SPT. MONUMENT
 CURVE NUMBER TAG
 LINE NUMBER TAG
 COORDINATE POINT LABEL
 SETBACK LINE
 BURDABLE AREA
 25' UNDISTURBED NATURAL FEATURES SETBACK
 30' SIDE YARD SETBACK
 30' FRONT YARD SETBACK TO PORCH (GENERAL COMMON ELEVATION)
 ROAD SHOULDER (UNIT 1-26)
 NOT TO SCALE

UNIT NO. 12
 CURVE NUMBER TAG C4
 LINE NUMBER TAG L4
 COORDINATE POINT LABEL
 SETBACK LINE

UNIT NO. 12
 CURVE NUMBER TAG C4
 LINE NUMBER TAG L4
 COORDINATE POINT LABEL
 SETBACK LINE

AS OF NOVEMBER 13, 2018

1218-2

3