

original

94

94

PLAT OF "ROBB'S SUBDIVISION OF OUTLOTS B and C OF ELMHURST"

A Subdivision of a part of SE 1/4 of NE 1/4, Sec. 10, T2N R5E, Township of Genoa, Livingston Co., Mich.

DEDICATION.

KNOW ALL MEN BY THESE PRESENTS, That we William E. Robb and Agnes E. Robb his wife, as proprietors, have caused the land embraced in the annexed plat to be surveyed, laid out and platted, to be known as "ROBB'S SUBDIVISION OF OUTLOTS B and C of ELMHURST", a Subdivision of a part of SE 1/4 of NE 1/4 Sec. 10 T2N R5E, Genoa Township, Livingston County, Michigan, and that the parks as shown on said plat are hereby dedicated to the use of the lot owners of this plat and those of "ELMHURST".

Signed and Sealed in Presence of

William E. Robb (L.S.)
Agnes E. Robb (L.S.)

STATE OF MICHIGAN, County of Livingston. ss.

On this 15th day of September 1926, before me, a Notary Public in and for said county, personally came the above named William E. Robb and Agnes E. Robb his wife, known to me to be the persons who executed the above dedication, and acknowledged the same to be their own free act and deed.

Clay W. Gordon Notary Public, Livingston Co., Mich.

My Commission expires Sept 15, 1927

DESCRIPTION OF LAND PLATTED.

The land embraced in the annexed plat of "ROBB'S SUBDIVISION OF OUTLOTS B and C of ELMHURST", a Subdivision of a part of SE 1/4 of NE 1/4 Sec. 10 T2N R5E, Genoa Township, Livingston County, Michigan, is described as follows:—Beginning at NE Corner of Outlot C Plat of "ELMHURST", a Subdivision of a part of SE 1/4 of NE 1/4 Sec. 10 T2N R5E, Township of Genoa, Livingston County, Michigan, running thence S 21°-36' W 274.2'; Due West 228.1'; N 65°-30' W 38.4'; N 21°-25' E 131.5'; N 59°-30' W 50'; N 21°-25' E 100'; N 59°-30' W 151.5'; N 21°-30' E 154'; S 59°-30' E 451.5' to point of beginning.

SURVEYOR'S CERTIFICATE.

I hereby certify that the plat hereon delineated is a correct one and that permanent metal monuments of not less than one inch in diameter and fifteen inches in length set in a concrete base at least four inches in diameter and forty-eight inches in depth have been placed at points marked thus O as thereon shown at all angles in the boundaries of the land platted.

Clay W. Gordon Registered Surveyor.

CERTIFICATE OF MUNICIPAL APPROVAL.

This plat was approved by the Township Board of the Township of Genoa at a meeting held Sept 14, 1926

John E. Meehan Clerk.

CERTIFICATE OF APPROVAL BY COUNTY BOARD.

This plat was approved on the 15 day of September 1926.

William E. Robb Judge of Probate.

John E. Meehan County Clerk.

Pearl M. Parker County Treasurer.

COUNTY TREASURER'S CERTIFICATE RELATING TO TAXES.

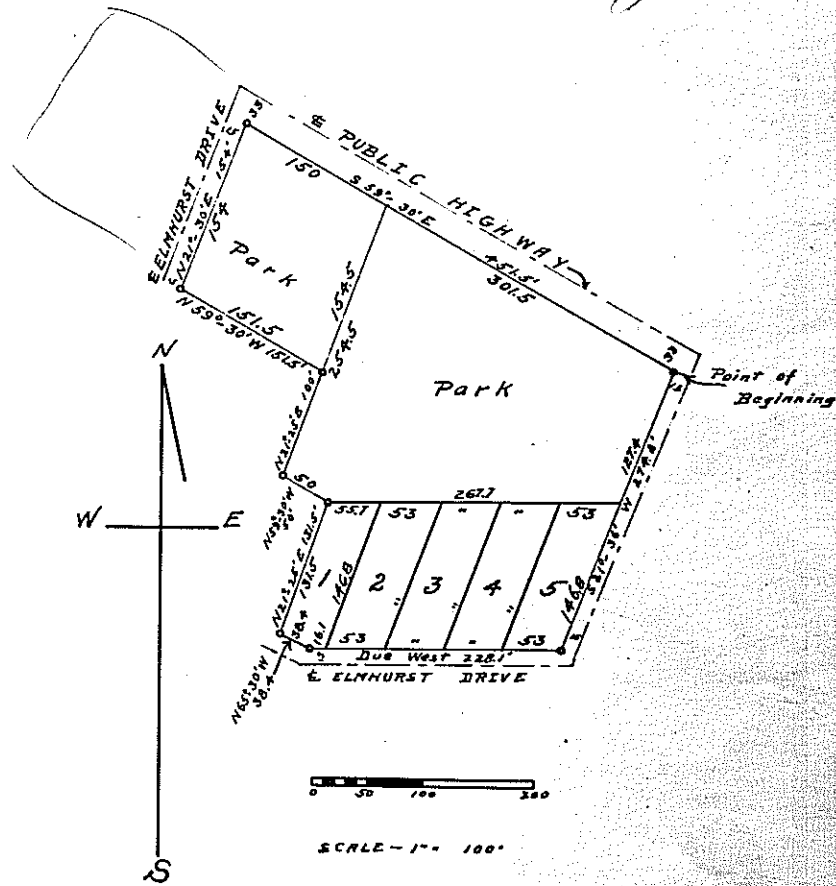
Office of County Treasurer Livingston County.

I hereby certify, That there are no tax liens or titles held by the State on the lands described above, and that there are no tax liens or titles held by individuals on said lands, for the five years preceding the 15th day of Sept 1926, and that the taxes for said period of five years are all paid; as shown by the records of this office.

Pearl M. Parker County Treasurer.

Sept 23, 1926
L. F. Hunter

Received for record the 27th day of Sept 1926
Plat 94
L. J. Drouin



94

94