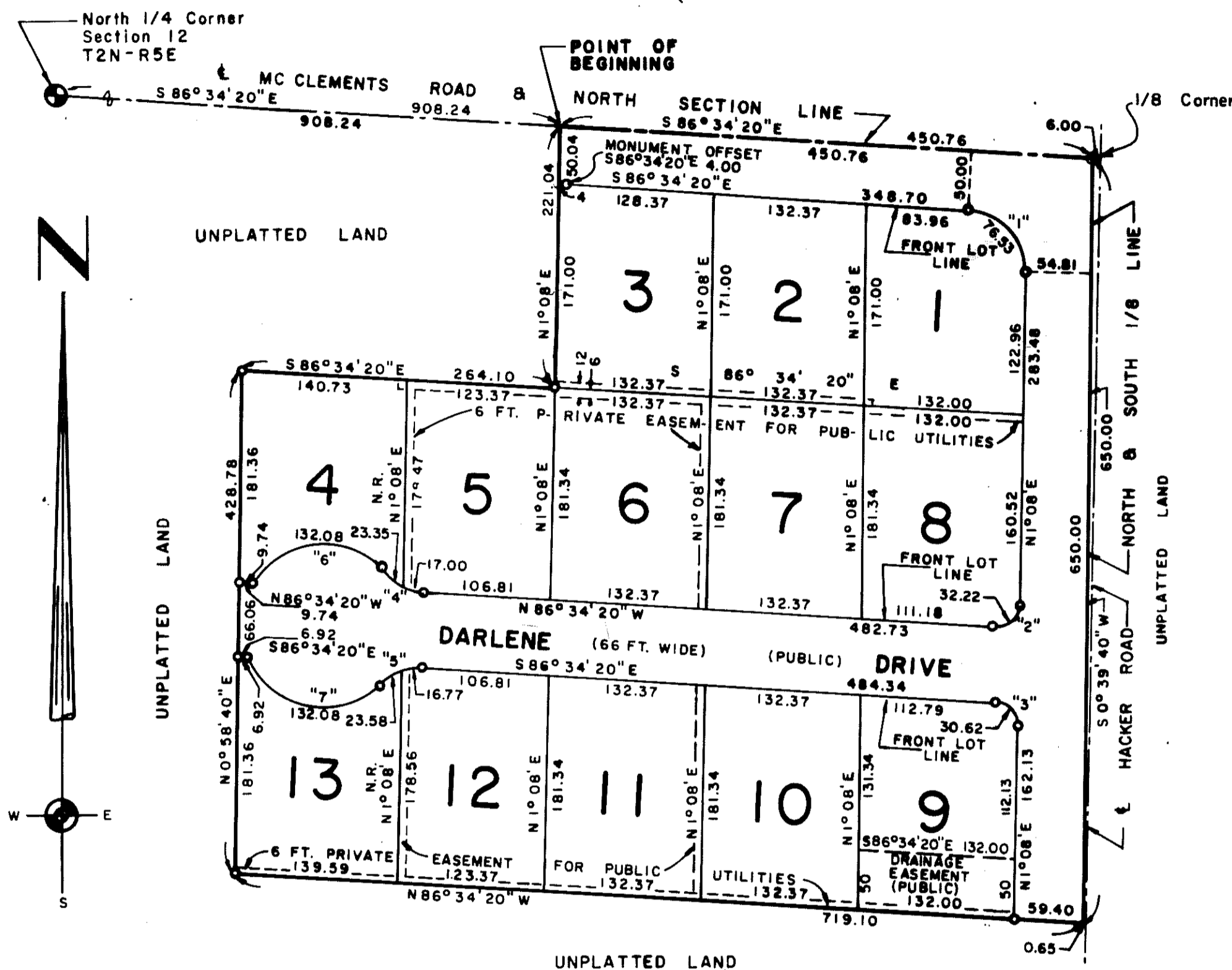


"DODGE ESTATES"

A SUBDIVISION OF A PART OF THE NW1/4 OF THE NE1/4 SECTION 12 T2N-R5E GENOA TOWNSHIP LIVINGSTON COUNTY MICHIGAN

MUNSELL AND GARLOCK, INC.
REGISTERED LAND SURVEYORS
307 EAST GRAND RIVER AVE.
HOWELL, MICHIGAN 48843



PLAT LEGEND:

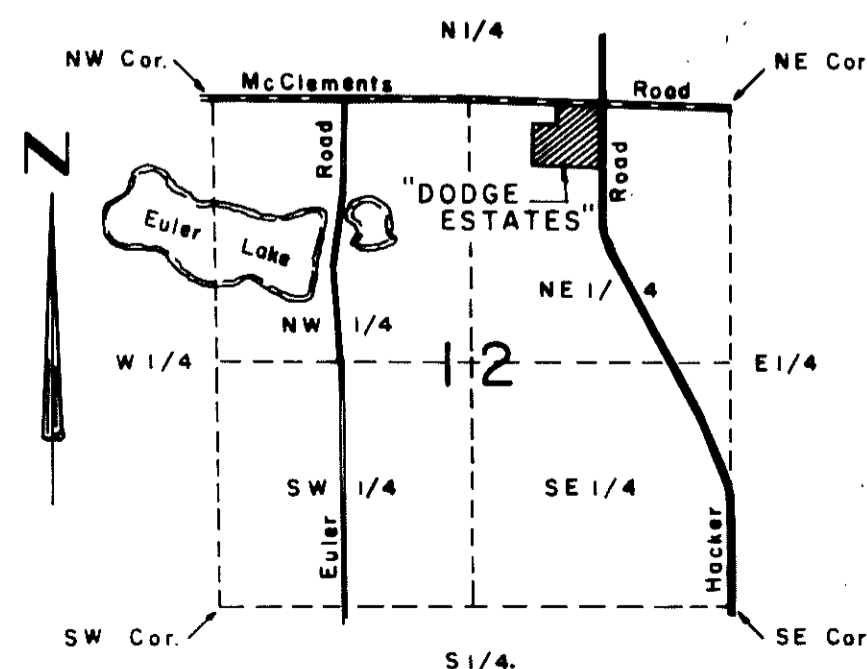
ALL DIMENSIONS ARE SHOWN IN FEET.
ALL CURVILINEAR DIMENSIONS SHOWN ARE ARC LENGTHS.
ALL BEARINGS ARE IN RELATION TO THE TRUE MERIDIAN, FROM POLARIS OBSERVATION 9-9-71.
THE SYMBOL "O" INDICATES A CONCRETE MONUMENT.
LOT MARKERS ARE 1/2" x 18" IRON RERODS CAPPED.
THE SYMBOL (N.R.) INDICATES NON-RADIAL LOT LINES.
THE SYMBOL "2" INDICATES ARC NUMBER (SEE CURVE DATA).
SUBDIVISION CONTAINS 9.35 ACRES ±.

CURVE DATA:

No.	Radius	Delta	Arc	Chord Bearing	Chord
1	50.00	87°42'20"	76.53	S42°43'10"E	69.28
2	20.00	92°17'40"	32.22	N47°16'50"E	28.84
3	20.00	87°42'20"	30.62	S42°43'10"E	27.71
4	50.00	46°14'15"	40.35	N63°27'13"W	39.26
5	50.00	46°14'15"	40.35	S70°18'33"W	39.26
6	70.00	108°06'35"	132.08	S85°36'36"W	113.34
7	70.00	108°06'35"	132.08	N78°45'18"W	113.34

LOCATION MAP

SCALE: 1" = 2000'



SURVEYOR'S CERTIFICATE

I, CHARLES E. GARLOCK, Surveyor, certify:

That I have surveyed, divided and mapped the land shown on this plat described as follows: "DODGE ESTATES" a subdivision of a part of the NW 1/4 of the NE 1/4 Section 12 T2N-R5E Genoa Township Livingston County Michigan, containing 13 lots numbered 1 to 13 inclusive. Beginning at a point on the centerline of McClements Road and the Section line 908.24 feet S 86° 34' 20" E from the North 1/8 corner of said Section 12; running thence S 86° 34' 20" E 450.76 feet along the centerline of McClements Road and the Section line to an 1/8 corner; thence S 0° 39' 40" W 650.00 feet along the 1/8 line; thence N 86° 34' 20" W 719.10 feet; thence N 0° 58' 40" E 428.78 feet; thence S 86° 34' 20" E 264.10 feet; thence N 1° 08' E 221.04 feet to the point of beginning. Containing 9.35 acres of land more or less.

That I have made such survey, land division and plat by the direction of the owners of such land.

That such plat is a correct representation of all the exterior boundaries of the land surveyed and the subdivision of it.

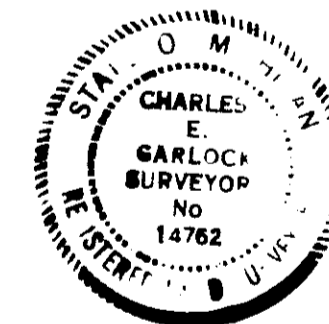
That the required monuments and lot markers have been located in the ground or that surety has been deposited with the municipality, as required by Section 125 of the Act.

That the accuracy of survey is within the limits required by Section 126 of the Act.

That the bearings shown on the plat are expressed as required by Section 126 (3) of the Act and as explained in the legend.

Date November 21, 1972

Name or Firm MUNSELL & GARLOCK, INC.
Address 307 East Grand River
City Howell County Livingston
State Michigan Zip 48843



Charles E. Garlock
Charles E. Garlock
Registration No. 14762