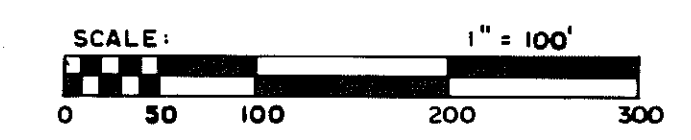
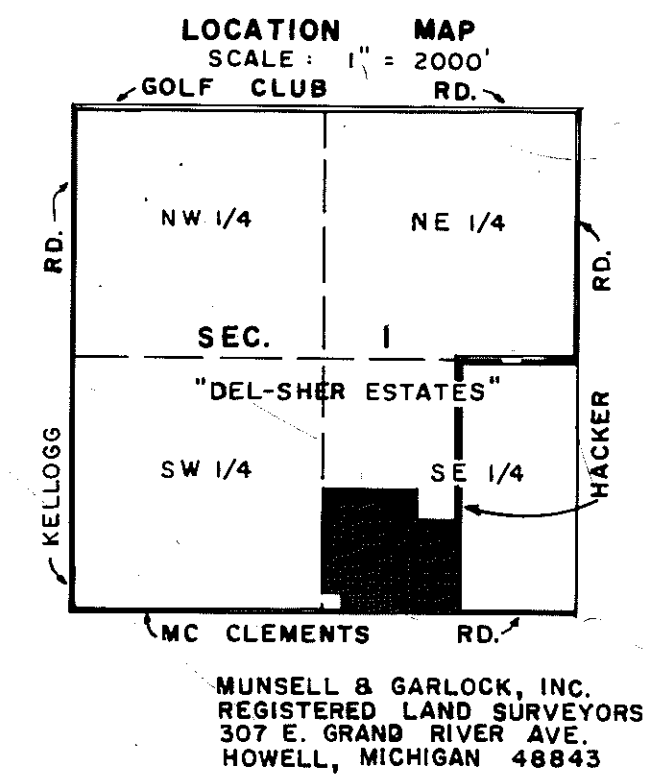
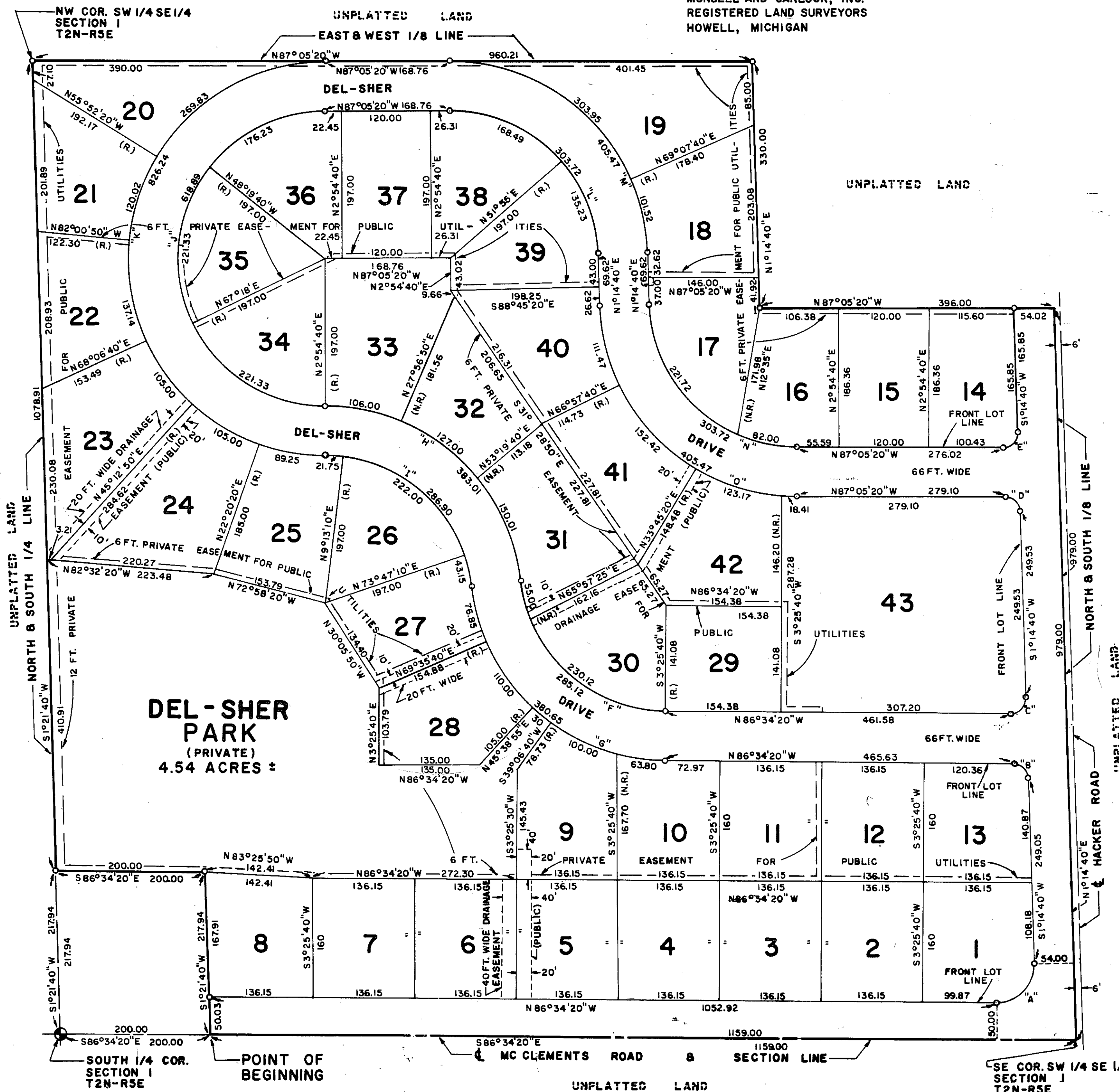


"DEL-SHER ESTATES"

A SUBDIVISION OF A PART OF THE SOUTHWEST 1/4
OF THE SOUTHEAST 1/4 SECTION 1 T2N-R5E
GENOA TOWNSHIP LIVINGSTON COUNTY MICHIGAN

MUNSELL AND GARLOCK, INC.
REGISTERED LAND SURVEYORS
HOWELL, MICHIGAN



PLAT LEGEND:
ALL DIMENSIONS ARE SHOWN IN FEET.
ALL CURVILINEAR DIMENSIONS SHOWN ARE ARC LENGTHS.
ALL BEARINGS ARE IN RELATION TO THE TRUE MERIDIAN.*
THE SYMBOL "O" INDICATE A CONCRETE MONUMENT.
LOT MARKERS ARE 1/2" X 18" IRON RE-RODS CAPPED.
THE SYMBOL (R) INDICATES RADIAL LOT LINES.
THE SYMBOL (N.R.) INDICATES NON-RADIAL LOT LINES.
SUBDIVISION CONTAINS 36.59 ACRES ±.
THE SYMBOL "A" INDICATES ARC LETTER (SEE CURVE DATA)
* FROM POLARIS OBSERVATION 9-9-71.

CURVE DATA					
NO.	RADIUS	DELTA	ARC	CH. BEARING	CHORD
A	50.00	92° 11'	80.45	N47°20'10"E	72.05
B	20.00	87° 49'	30.65	N42°39'50"W	27.74
C	20.00	92° 11'	32.18	N47°20'10"E	28.82
D	20.00	88° 20'	30.83	N42°55'20"W	27.87
E	20.00	91° 40'	32.00	N47°04'40"E	28.69
F	197.00	82° 55' 30"	285.12	N45°06'35"W	260.88
G	263.00	82° 55' 30"	380.65	N45°06'35"W	348.28
H	263.00	83° 26' 30"	383.01	N45°22'05"W	350.05
I	197.00	83° 26' 30"	286.90	N45°22'05"W	262.21
J	197.00	180° 00'	618.89	N2° 54' 40"E	394.00
K	263.00	180° 00'	826.24	N2° 54' 40"E	528.00
L	197.00	88° 20'	303.72	N42°55'20"W	274.52
M	263.00	88° 20'	405.47	N42°55'20"W	366.49
N	197.00	88° 20'	303.72	N42°55'20"W	274.52
O	263.00	88° 20'	405.47	N42°55'20"W	366.49