

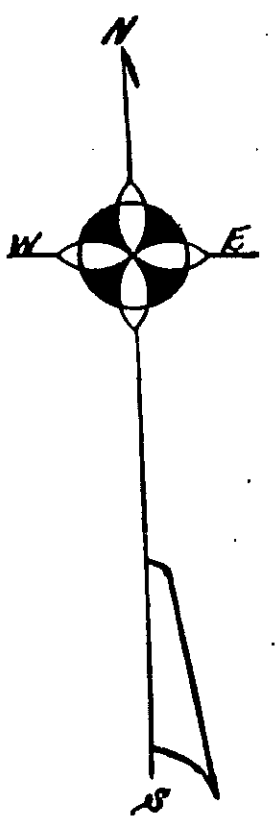
EXOR
8/31/26

Examined and Approved
Aug 31-1926
O. B. F. [Signature]
Deputy Auditor General

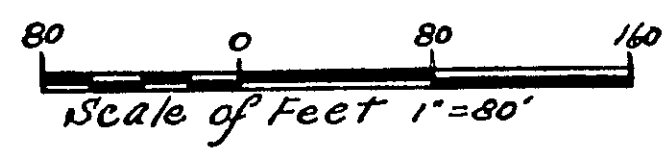
CROOKED LAKE PENINSULAR SUB

GENOA TOWNSHIP, LIVINGSTON COUNTY, MICHIGAN

A SUBDIVISION OF A PART OF THE N.W. 1/4 OF S.W. 1/4 OF SEC. 22, T.2N, R.5E.



RECORDED (CERTIFY TO THE COPY IS TRUE COPY OF THE ORIGINAL) AUG 31-1926
L. H. Hansen



FILED IN AUDITOR GENERAL'S DEPT.
Sept 2-1926
L. H. Hansen
DEPUTY AUDITOR GENERAL

COPY
Recorder's Office
Livingston County
Plat of Crooked Lake
Peninsular Sub
was Recorded this 31st day of
Aug 26th 1926
in Book 2 Plate
E. J. Dreyer
Register

DEDICATION
KNOW ALL MEN BY THESE PRESENTS, That I, Matilda Odell, as proprietor, have caused the land embraced in the annexed plat to be surveyed, laid out and platted, to be known as, "CROOKED LAKE PENINSULAR SUB," Genoa Township, Livingston County, Michigan, and that the drives and walks as shown on said plat are hereby dedicated to the use of the lot owners.

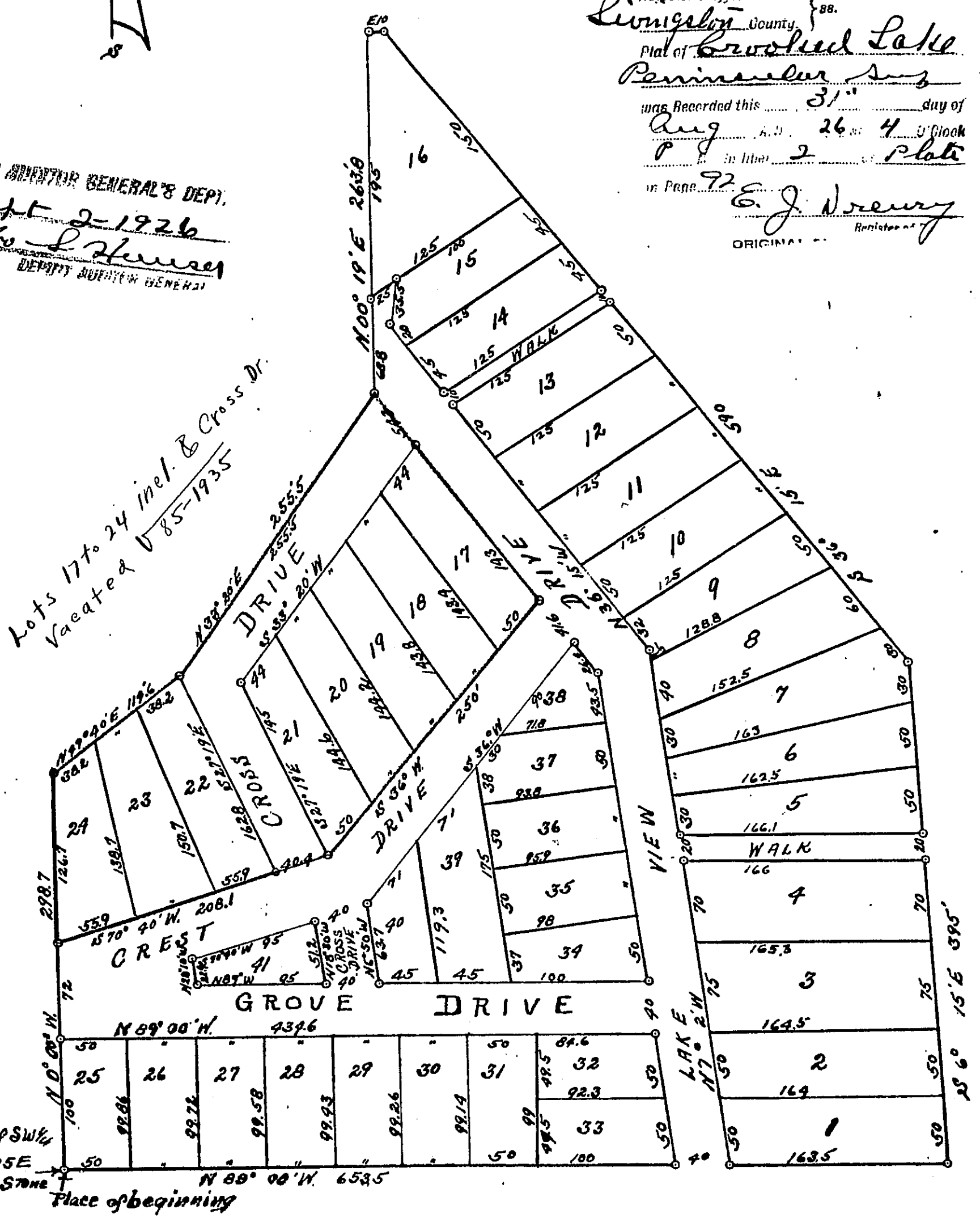
Signed and sealed in Presence of
[Signatures]
STATE OF MICHIGAN } ss.
County of Livingston }
On this 28 day of Aug 1926 before me, a Notary Public, in and for said county, personally came the above named Matilda Odell, known to me to be the person who executed the above dedication and acknowledged the same to be her own free act and deed.
My Commission expires Jan 31 1927
Grant N. Dunning
Notary Public Livingston Co. Mich.

Description of Land Platted
Beginning at the S.W. corner of the N.W. 1/4 of the S.W. 1/4 of Sec. 22, T.2N, R.5E, Michigan;
Thence N 0° 00' W. 298.7 on the section line; thence N 49° 40' E 146.6; N 53° 20' E 255.5; N 0° 19' E 263.0; E 10; S 6° 15' E 395'; N 89° 00' W. 653.5 to the place of beginning.

Office of the Livingston County Treasurer, Howell, Michigan, Aug 28th 1926.
I hereby certify that there are no tax liens or titles held by the state on the lands described above and that there are no tax liens or titles held by individuals on said lands for the five years preceding the 28 day of Aug 1926 and that the taxes for said period of five years are paid as shown by the records of this office.
Pearl M. Parker
Livingston County Treasurer.

Surveyor's Certificate
I hereby certify, that the plat heron delineated is a correct one and that permanent metal monuments of not less than 1" in diameter and 15" in length set in a concrete base at least 4" in diameter and 48" in depth have been planted at points marked thus: as thereon shown at all angles in the boundaries of the land platted, at all intersections of drives and walks with each other, and with the boundaries of the plat as shown on said plat.
Grant N. Dunning
Registered Civil Engineer.

This plat was approved by the Genoa Township Board at a meeting held on the 30th day of August 1926
Floyd F. Rickett
Twp. Clerk
This plat was approved on the 31 day of August 1926
Willis L. Lyons
Judge of Probate
Harold L. Chubb
County Clerk
Pearl M. Parker
County Treasurer.



S.W. Cor. of NW 1/4 of SW 1/4 of Sec 22, T.2N, R.5E
Stone
Place of beginning

22625