

"CROOKED LAKE SUB."

of part of S.W. 1/4 of sec. 22 1/2 part of N.W. 1/4 of sec. 27 T. 2 N. R. 5 E.

GENOA TWP.

LIVINGSTON CO. MICH.

Scale: 150 ft. = 1 in.

NOTE: All dimensions are given in feet and decimals thereof.

I HEREBY CERTIFY THAT THIS COPY IS A TRUE COPY OF THE MAP OR PLAN FORWARDED THE REGISTER OF DEEDS FOR RECORD.

APR 7 1921
J. L. HANSEN
DEPUTY AUDITOR GENERAL

FILED IN AUDITOR GENERAL'S DEPT.

APR 8 1921
J. L. HANSEN
DEPUTY AUDITOR GENERAL

DESCRIPTION.

The land embraced in the annexed plat of Crooked Lake Sub. of part of S.W. 1/4 of sec. 22 and part of N.W. 1/4 of sec. 27 T. 2 N. R. 5 E. Genoa Twp. Livingston Co. Mich. is described as follows: Beginning at a point in the line between sections 22 and 27 N. 87° 10' E. 201.00 ft. from the N. corner of said sections 22 and 27 and running thence along the E. line of Highland Ave. N. 0° 50' W. 577.00 ft. to a point; thence along the S. line of Bay St. N. 70° 19' E. 220.70 ft. to a point; thence along said Bay St. N. 18° 19' E. 23.20 ft. to a point; thence N. 70° 19' E. 113.30 ft. to a point; thence S. 32° 56' E. 432.00 ft. to a point; thence S. 54° 17' E. 341.79 ft. to a point; thence S. 61° 45' E. 280.00 ft. to a point; thence S. 4° 15' E. 356.02 ft. to a point; thence along the N. line of Clifford St. N. 79° 45' W. 162.52 ft. to a point; thence along the N. line of said street S. 77° 23' W. 526.00 ft. to a point; thence along the N. line of said street N. 65° 00' W. 360.00 ft. to a point; thence along the E. line of Highland Ave. N. 0° 50' W. 297.90 ft. to the point of beginning.

I hereby certify that the plat herein delineated is a correct copy of the plat on file in the Auditor General's Office, consisting of 31 lots with 10 streets and alleys have been planted at points marked thus \odot or thereon shown at all angles in the boundaries of the land platted, and at all intersections of streets or streets and alleys.

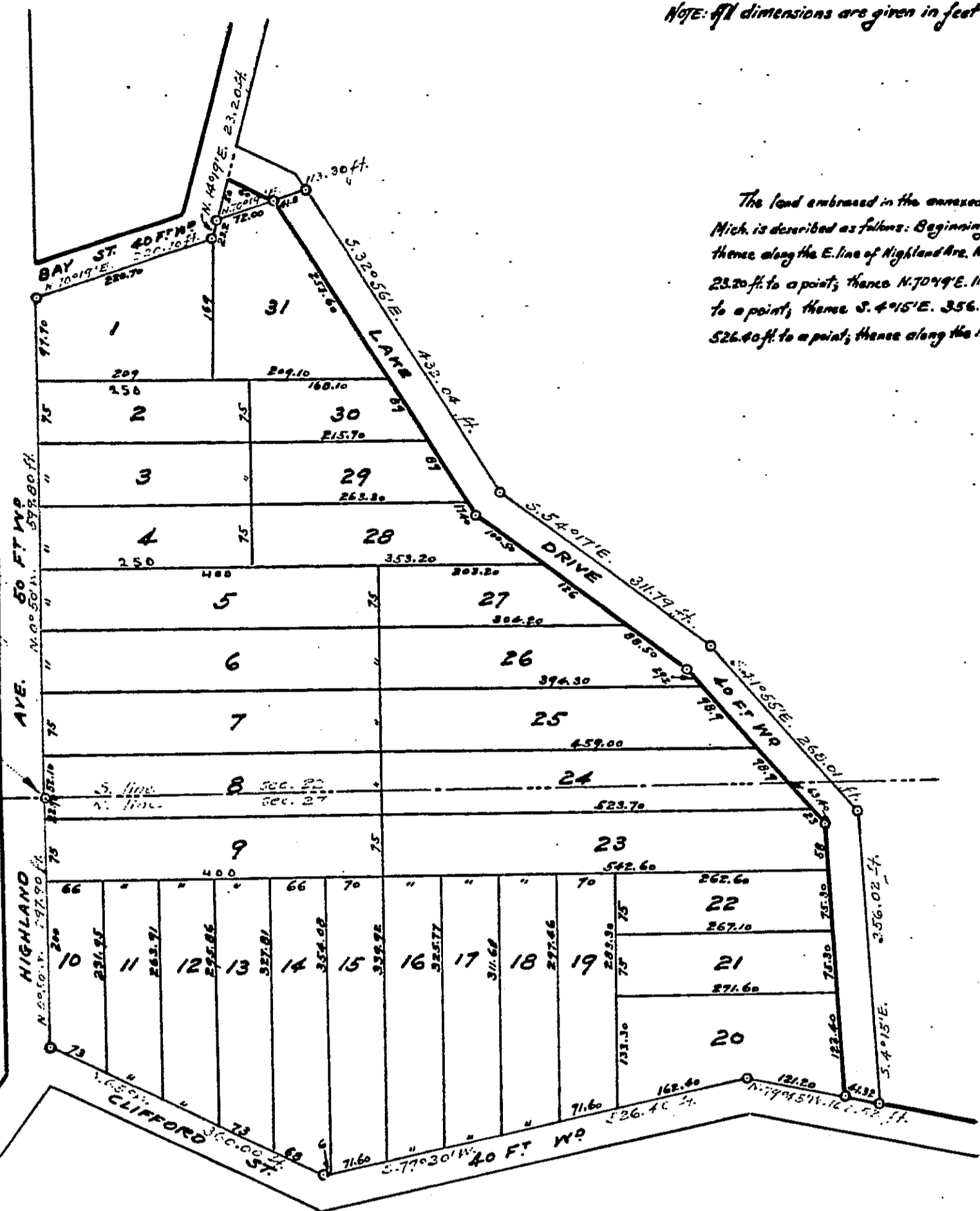
W. W. Mussell
Register of Deeds

KNOW ALL MEN BY THESE PRESENTS, that Charles A. Kahner and Martha C. Kahner his wife have caused the land embraced in the annexed plat to be surveyed, laid out and platted by Edmund C. Reed Surveyor of Livingston County, Michigan, and the same to be dedicated to the use of the public.

SIGNED AND SEALED IN PRESENCE OF
Charles A. Kahner S.1
Martha C. Kahner S.1
Edmund C. Reed S.1

STATE OF MICHIGAN }
County of Wayne }
On this 13th day of Sept 1920
before me, a Notary Public in and for said county, personally came the above named Charles A. Kahner and Martha C. Kahner, his wife, and Edmund C. Reed, Surveyor of said county, known to me to be the persons who executed the above dedication, and acknowledged the same to be their free act and deed.

My commission expires July 1st 1921
This plat approved on the 8th day of March 1921
William L. Lyons
Judge of Probate
John C. Legman
County Clerk
Henry J. McKinnis
County Treasurer



Office of County Treasurer Livingston County.
I hereby certify that there are no tax liens or title held by the State on lands described on this plat, and that there are no tax liens on title held by individuals on said lands, for the five years preceding the 8th day of March 1921, and that the taxes for said period of five years are paid, as shown by the records of this office. Henry J. McKinnis
County Treasurer

Order of Vacation
By order of the Circuit Court, this plat be and the same is hereby vacated May 21st/23
Filed May 25th/23
oucher-712-1923

This plat was approved by the Township Board of the Genoa Township, Michigan, at a meeting held March 3rd 1921 (Date) Edmund C. Reed (Name) Clerk