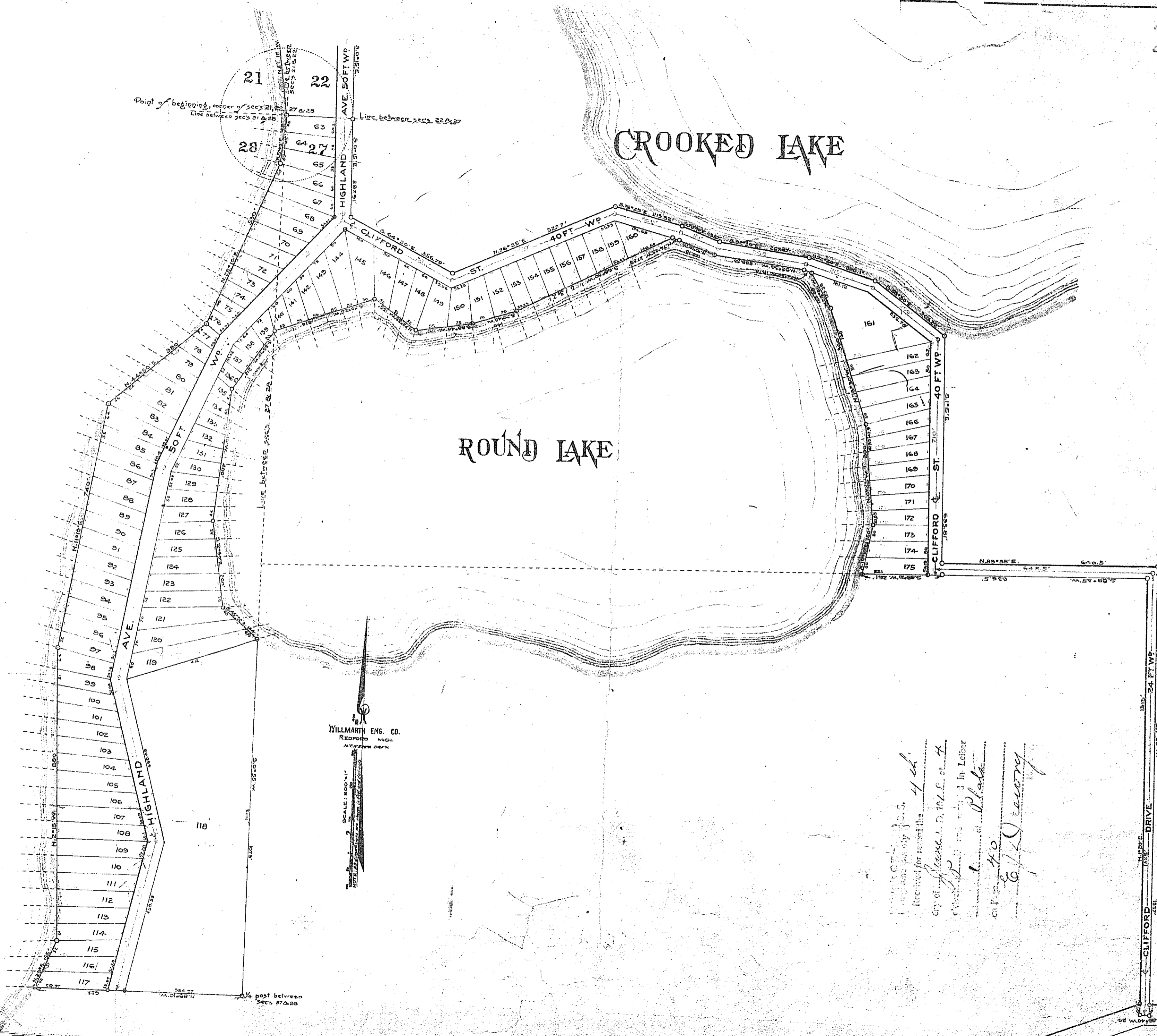


CROOKED LAKE HIGHLANDS SUB.

of part of sections 21, 22, 27 and 28, T.2 N. R. 5 E.

GENOA TWP.
LIVINGSTON CO.
MICH.

LITTLE CROOKED LAKE



WILLMARTH ENG. CO.
REDFORD MICH.
ATTORNEYS

Received for record the 4th day of June A.D. 1916 at 4 o'clock P.M. and returned in Liber 1 of Plate 40 of 1916
G. J. Drury

CLIFFORD DRIVE

131.7 24 FT WP

N. 89° 55' E.

610.5'

40 FT WP

37.5x17.5

18° 55'

40