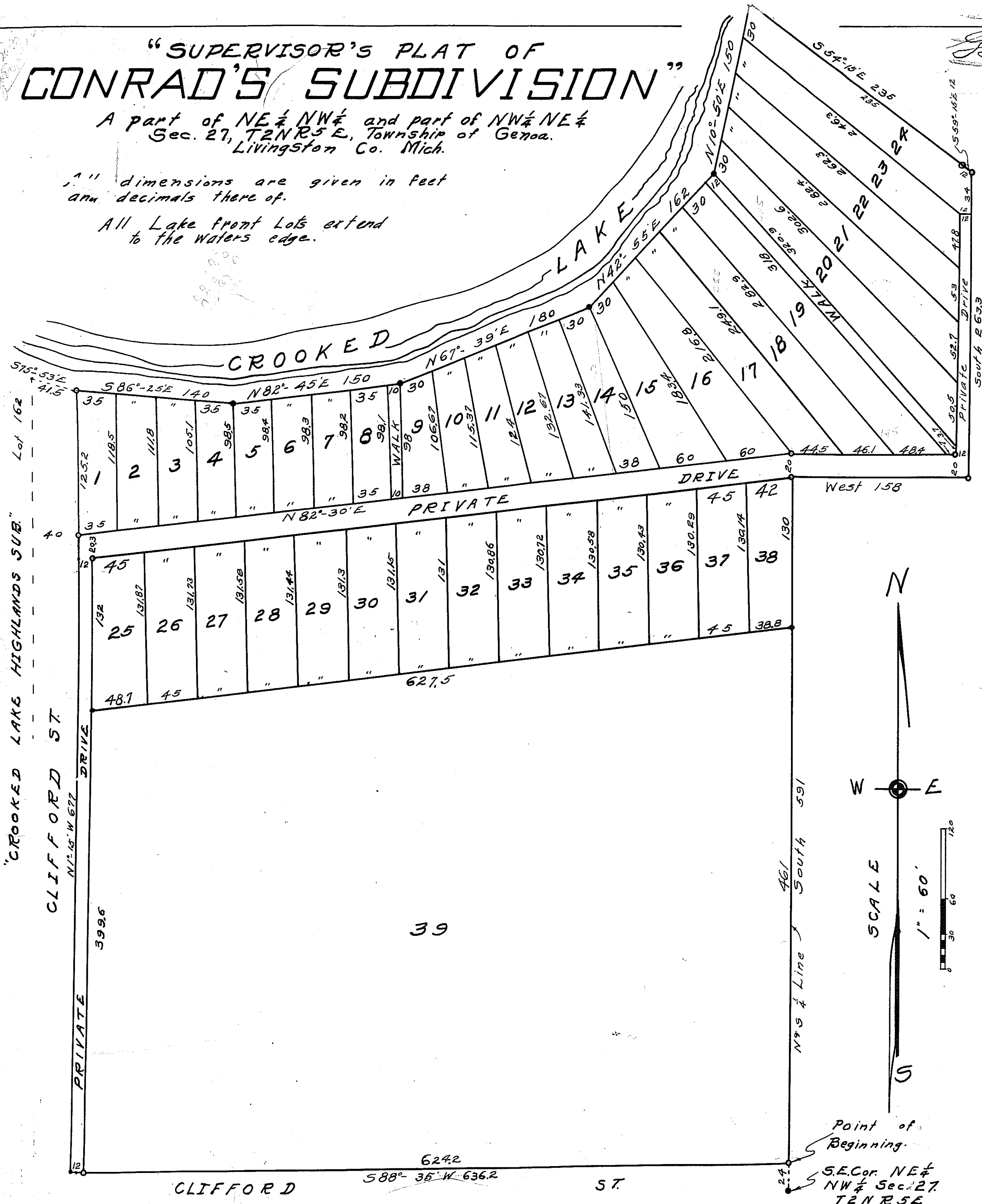


# "SUPERVISOR'S PLAT OF CONRAD'S SUBDIVISION"

A part of NE 1/4 NW 1/4 and part of NW 1/4 NE 1/4 Sec. 27, T2N R5E, Township of Genoa, Livingston Co. Mich.

All dimensions are given in feet and decimals thereof.

All Lake front Lots extend to the Waters edge.



Examined and Approved  
 J. Hartman  
 County Auditor General

### DEDICATION.

KNOW ALL MEN BY THESE PRESENTS, That I, Henry Itsell, Supervisor of the Township of Genoa, of Livingston County, State of Michigan, by virtue of authority vested in me by Section 51, Act 172, of 1929, having been duly authorized by the Township Board of the Township of Genoa, have caused the land described in the annexed plat to be surveyed, laid out and platted, to be known as "SUPERVISOR'S PLAT OF CONRAD'S SUBDIVISION", A PART OF NE 1/4 NW 1/4 AND PART OF NW 1/4 NE 1/4 SEC. 27, T2N, R5E, TOWNSHIP OF GENOA, LIVINGSTON CO. MICHIGAN, and that the streets and alleys, as shown on said plat are now being used for such purposes.

### WITNESSES:

Stanley B. ...  
 Ruth ...

Supervisor of the Township of Genoa.

STATE OF MICHIGAN,  
 County of LIVINGSTON ss.

On this 23rd day of May A.D. 1935, before me, a Notary Public in and for said county, personally came the above named Henry Itsell of Genoa Township, known to me to be the person who executed the above dedication, and acknowledged the same to be his free act and deed as such Supervisor.

My Commission expires ... Notary Public in and for Livingston County.

### DESCRIPTION OF LAND PLATTED.

The land embraced in the annexed plat of "SUPERVISOR'S PLAT OF CONRAD'S SUBDIVISION", A PART OF NE 1/4 NW 1/4 AND PART OF NW 1/4 NE 1/4 SEC. 27, T2N R5E, TOWNSHIP OF GENOA, LIVINGSTON CO. MICHIGAN, is described as follows: Beginning at a point 24' North of the SE corner NE 1/4 NW 1/4 Sec. 27, T2N R5E Township of Genoa, Livingston Co., Michigan, and running thence S 88° 35' W. 63.62'; thence N 1° - 15' W 677'; S 86° - 25' E 140'; N 82° - 45' E 160'; N 67° - 39' E 180'; N 42° - 55' E 162'; N 10° - 50' E 150'; S 54° - 15' E 235'; S 59° - 15' E 12'; South 263.3'; West 158'; South 591' to point of beginning.

### CERTIFICATE OF MUNICIPAL APPROVAL.

This plat was approved by the Township Board of the Township of Genoa, of Livingston County, at a meeting held May-10 1935.

Carl L. Murch  
 Clerk.

### CERTIFICATE OF APPROVAL BY COUNTY BOARD.

This plat was approved on the twenty-fourth day of May 1935.

Register's Office  
 Livingston County  
 Plat of Conrad's Subdivision  
 June 26th 1935  
 A.M. in hour 3 of Plat  
 Frank D. ...

Willis L. Lyons  
 Judge of Probate.

John P. ...  
 County Clerk.

A. R. Eastman  
 County Treasurer.

### SURVEYOR'S CERTIFICATE.

I hereby certify that the plat hereon delineated is a correct one and that permanent metal monuments of not less than one inch in diameter and fifteen inches in length set in a concrete base at least four inches in diameter and forty-eight inches in depth have been placed at points marked thus O, as thereon shown at all angles in the boundaries of the land platted, at all intersections of streets, intersections of alleys, or of streets and alleys, and at the intersections of streets and alleys with the boundaries of the plat as shown on said plat.

Clay W. Gordon  
 Registered Surveyor.  
 Howell Mich.