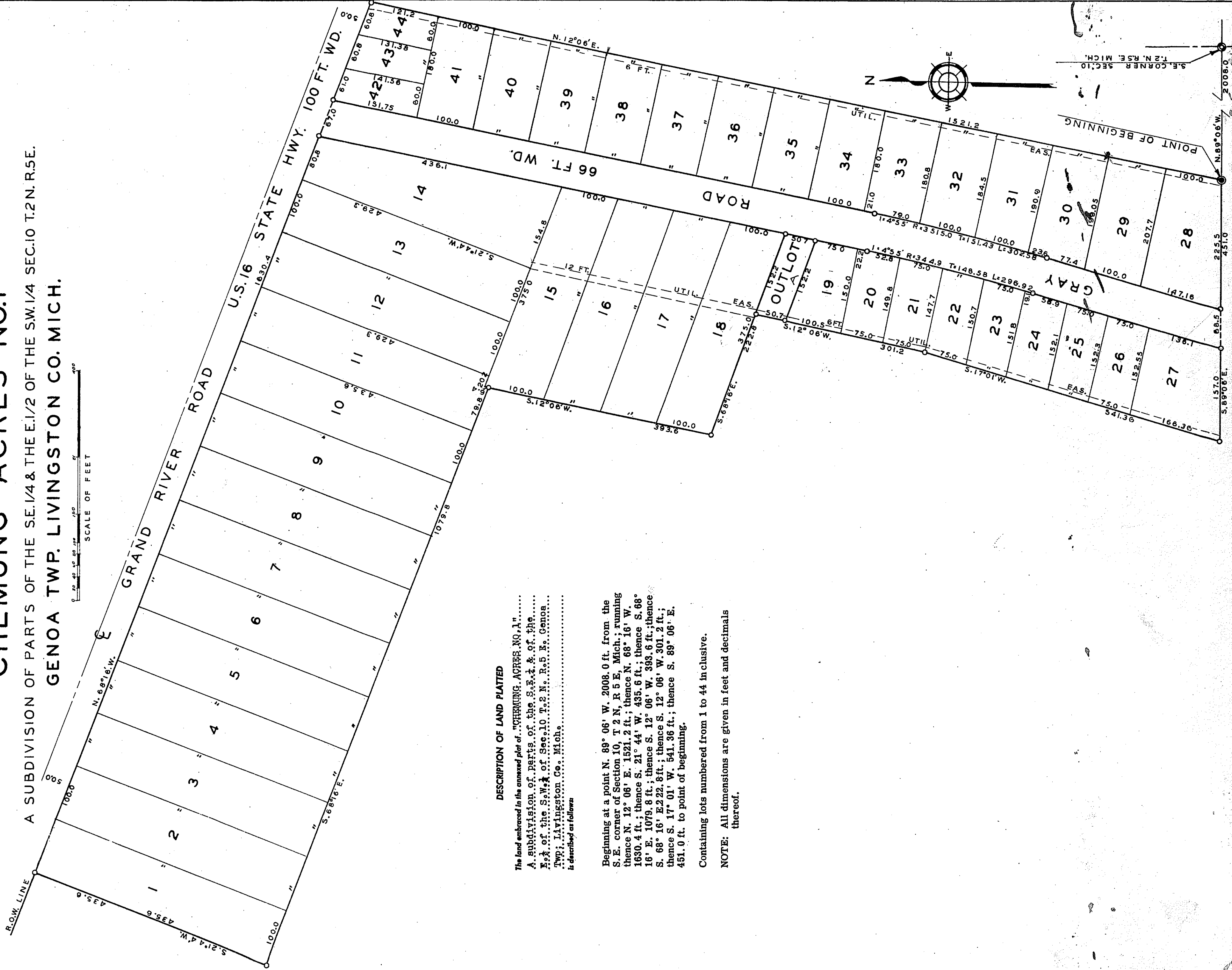
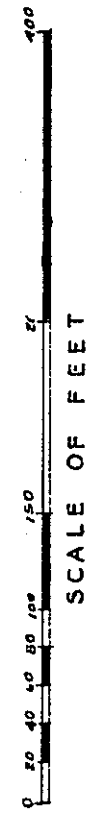


"CHEMUNG ACRES NO.1"

A SUBDIVISION OF PARTS OF THE SE.1/4 & THE E.1/2 OF THE SW.1/4 SEC.10 T.2N. R.5E.
GENOA TWP. LIVINGSTON CO. MICH.



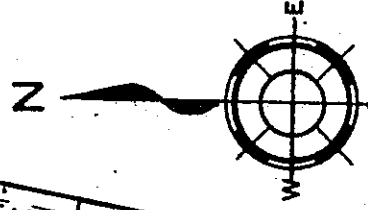
DESCRIPTION OF LAND PLATTED

The land embraced in the annexed plat of "CHEMUNG ACRES NO.1".....
A subdivision of parts of the S.E.1/4 & of the E.1/2 of the S.W.1/4 of Sec.10 T.2N. R.5E. Co. Genoa...
Twp.; Livingston Co. Mich.
is described as follows:

Beginning at a point N. 89° 06' W. 2008.0 ft. from the S.E. corner of Section 10, T 2 N, R 5 E, Mich.; running thence N. 12° 06' E. 1521.2 ft.; thence N. 68° 16' W. 1630.4 ft.; thence S. 21° 44' W. 435.6 ft.; thence S. 68° 16' E. 1079.8 ft.; thence S. 12° 06' W. 393.6 ft.; thence S. 68° 16' E. 222.8 ft.; thence S. 12° 06' W. 301.2 ft.; thence S. 17° 01' W. 541.36 ft.; thence S. 89° 06' E. 451.0 ft. to point of beginning.

Containing lots numbered from 1 to 44 in clusive.

NOTE: All dimensions are given in feet and decimals thereof.



S.E. CORNER SECTION 10 T.2N. R.5E. MICH.

POINT OF BEGINNING