

# "CHATAQUA COLONY"

A SUBDIVISION OF PARTS OF THE S.W. 1/4, SEC. 22  
AND OF THE N.W. 1/4, SEC. 27, T. 2 N. R. 5 E.  
GENOA TWP. LIVINGSTON CO. MICH.

## DESCRIPTION OF LAND PLATTED

The land embraced in the annexed plat of "CHATAQUA COLONY".....  
A Subdivision of parts of the S.W. 1/4, Sec. 22 and  
of the N.W. 1/4, Sec. 27, T. 2 N. R. 5 E. ....  
Genoa Township, Livingston County Michigan.....  
is described as follows:

Beginning at a point N. 89° 30' E. 201.0 ft. and  
S. 0° 15' E. 281.49 ft. from the N.W. corner of  
section 27, T. 2 N. R. 5 E. Michigan.  
Running thence S. 0° 15' E. 15.46 ft; thence  
S. 65° 05' E. 271.94 ft; thence N. 48° 39' E. 991.46 ft;  
thence N. 67° 27' W. 100.0 ft; thence N. 31° 03' W.  
165.20 ft; thence N. 88° 10' W. 172.89 ft; thence  
S. 43° 17' E. 86.51 ft; thence S. 47° 14' W. 953.44 ft.  
to the point of beginning.  
Containing Lots numbered 1 to 20 inclusive and  
Silver Anchor Park.

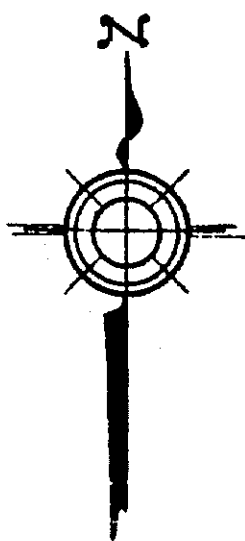
NOTE. All dimensions are given in feet and decimals  
thereof.

## SURVEYOR'S CERTIFICATE

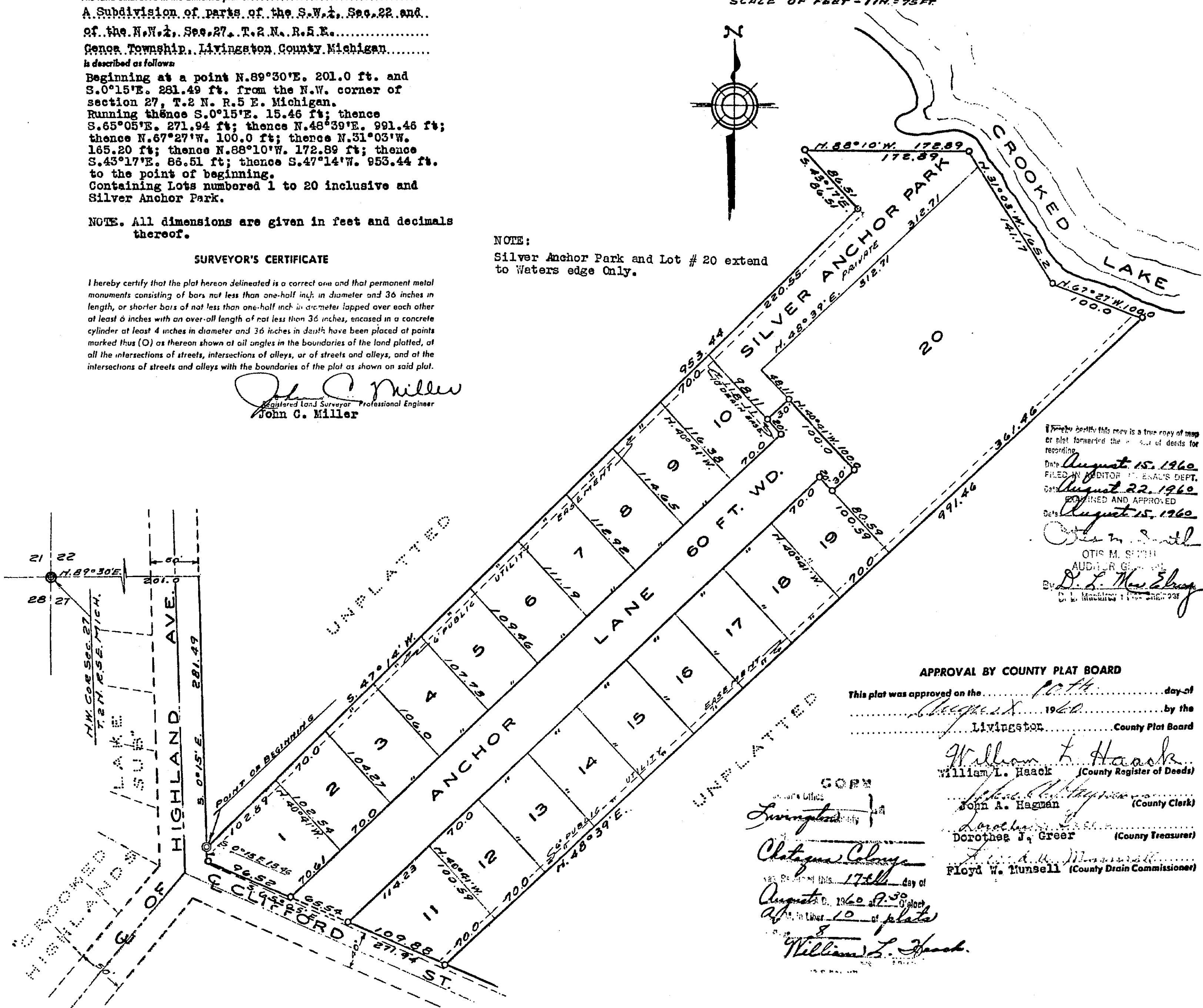
I hereby certify that the plat hereon delineated is a correct one and that permanent metal monuments consisting of bars not less than one-half inch in diameter and 36 inches in length, or shorter bars of not less than one-half inch in diameter lapped over each other at least 6 inches with an over-all length of not less than 36 inches, encased in a concrete cylinder at least 4 inches in diameter and 36 inches in depth have been placed at points marked thus (O) as thereon shown at all angles in the boundaries of the land platted, of all the intersections of streets, intersections of alleys, or of streets and alleys, and at the intersections of streets and alleys with the boundaries of the plat as shown on said plat.

*John C. Miller*  
Registered Land Surveyor Professional Engineer  
John C. Miller

SCALE OF FEET - 1 IN. = 75 FT.



NOTE:  
Silver Anchor Park and Lot # 20 extend  
to Waters edge Only.



**DEDICATION**  
KNOW ALL MEN BY THESE PRESENTS, that we.....  
James O. Burgett and Annett Burgett, his wife.....  
Donald C. Menge and Betty Menge, his wife.....

as proprietors, have caused the land embraced in the annexed plat to be surveyed,  
laid out and platted, to be known as "CHATAQUA COLONY".....  
A subdivision of parts of the S.W. 1/4 of sec. 22.....  
and of the N.W. 1/4 of sec. 27, T. 2 N. R. 5 E.,.....  
Genoa Township, Livingston County Michigan.....  
and that the streets as shown on said plat are  
herby dedicated to the use of the public  
Silver Anchor Park as shown on said plat is hereby  
dedicated to the use of the Lot owners only.

Signed and Sealed in  
the presence of  
*James O. Burgett* (L.S.)  
*Annett Burgett* (L.S.)  
*Donald C. Menge* (L.S.)  
*Betty Menge* (L.S.)  
Witnesses:  
*Kenneth M. Schultz* (Witness)  
*Janet E. Schultz* (Witness)

## ACKNOWLEDGMENT

STATE OF Michigan }  
County of Livingston } ss.  
On this 11th day of September, A.D. 1959, before  
me, *Kenneth M. Schultz*, a Notary Public in and for  
said county appeared James O. Burgett, Annett Burgett,  
Donald C. Menge and Betty Menge  
to me personally known, who being each by me duly sworn did say that they  
executed the above dedication, and acknowledged said  
instrument to be

*Kenneth M. Schultz*  
Notary Public Livingston County  
My Commission expires May 31, 1963.

## APPROVAL BY BOARD OF COUNTY ROAD COMMISSIONERS

This plat has been examined and was approved on the 3rd  
day of August, 1960 by the Livingston  
County Board of Road Commissioners.  
*Fred Berry* (Chairman)  
*Norman S. Topping* (Member)  
*Warren H. Anderson* (Member)

## APPROVAL BY COUNTY PLAT BOARD

This plat was approved on the 10th day of  
August, 1960 by the  
Livingston County Plat Board  
*William L. Haack* (County Register of Deeds)  
*John A. Hagan* (County Clerk)  
*Dorothea J. Greer* (County Treasurer)  
*Floyd W. Munsell* (County Drain Commissioner)

## CERTIFICATE OF MUNICIPAL APPROVAL

This plat was approved by the Township Board  
of the Township of Genoa  
at a meeting held Sept. 18, 1959 and that the width of lots is in  
compliance with requirements of Section 30, Act 172, of 1929, as amended.  
*Dorothea J. Greer* Clerk

## COUNTY TREASURER'S CERTIFICATE

Office of County Treasurer, Livingston County.  
I hereby certify, that there are no tax liens or titles held by the State on the lands de-  
scribed hereon, and that there are no tax liens or titles held by individuals on said lands,  
for the five years preceding the 10th day of  
August, 1960 and that the taxes for said period of  
five years are all paid, as shown by the records of this office  
This certificate does not apply to taxes, if any, now in process of collection by township,  
city or village collecting officers.  
*Dorothea J. Greer* (County Treasurer)